

# THE ALAMO

THC Quarterly Update | April 28, 2022

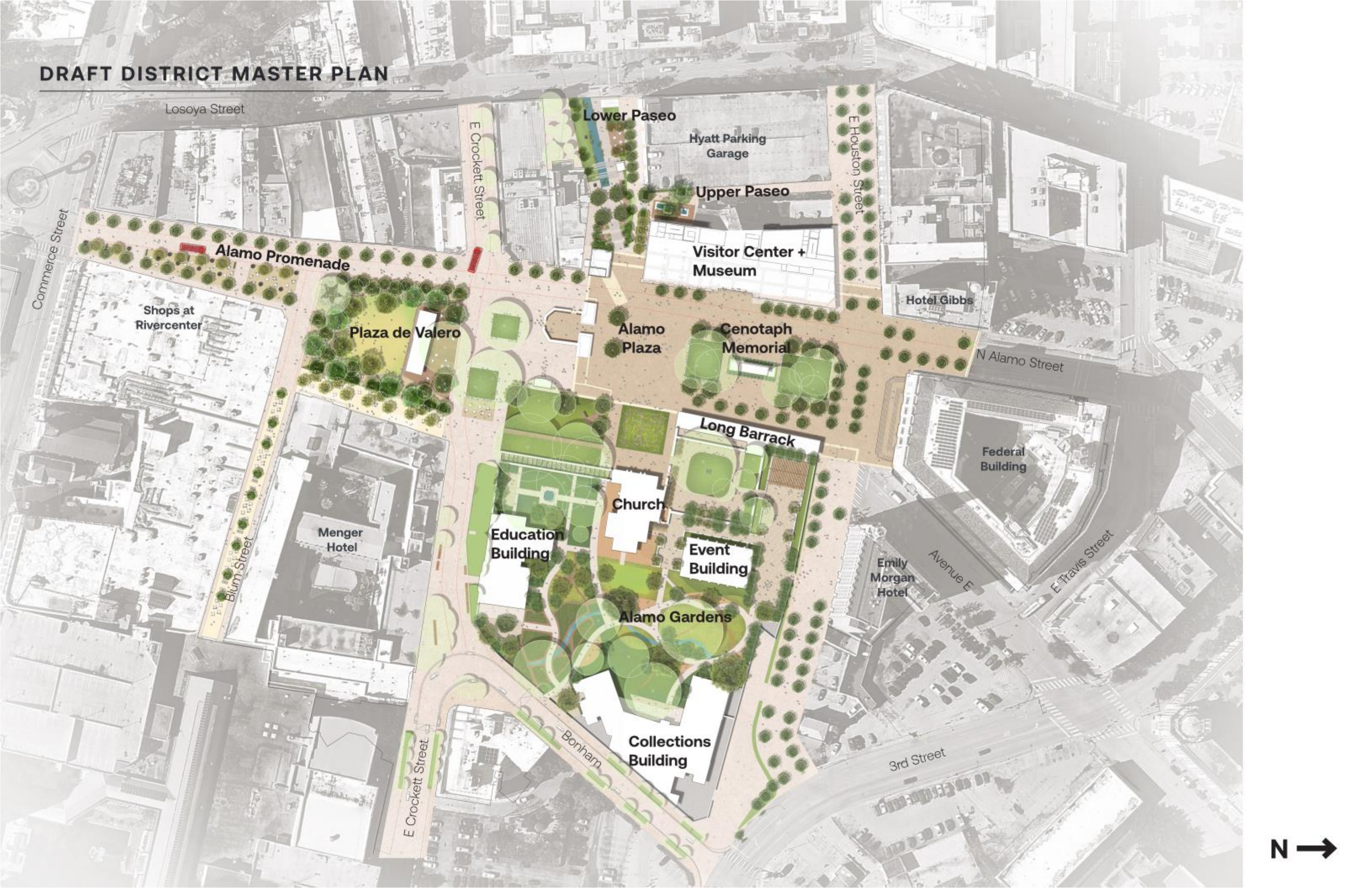
A historical map of the Alamo mission complex, showing the layout of the mission buildings, the square, and the convent yard. The map is drawn in a light blue color on a dark blue background. The text 'THE ALAMO' is overlaid in large, white, bold, serif capital letters. Below it, the subtitle 'Alamo Plan Master Plan' is written in a smaller, white, sans-serif font. The map includes labels such as 'Square of Mission' and 'Yard of Convent'.

# THE ALAMO

Alamo Plan Master Plan



# DRAFT DISTRICT MASTER PLAN





## design approach

---

### **edit + curate**

less is more, let the historic stand out and the remainder stay quiet

### **create a unified site**

create a shared character that defines the district and unlocks the landscape as an asset for programmable space

### **craft for comfort**

use climate-forward design to create spaces that people can enjoy for a full day in any season





ALAMO PLAZA | EXISTING





# ALAMO PLAZA | A REFINED ICONIC VIEW



Align to Convent Garden exit

Align to Fort Wall Footprint

Sustainable prairie plantings

Open Primary E-W Axis

Palisade in 1836 landscape

Limestone for Historic Features

Seasonal native flower display

Frame the Church Facade

Add shade + comfort



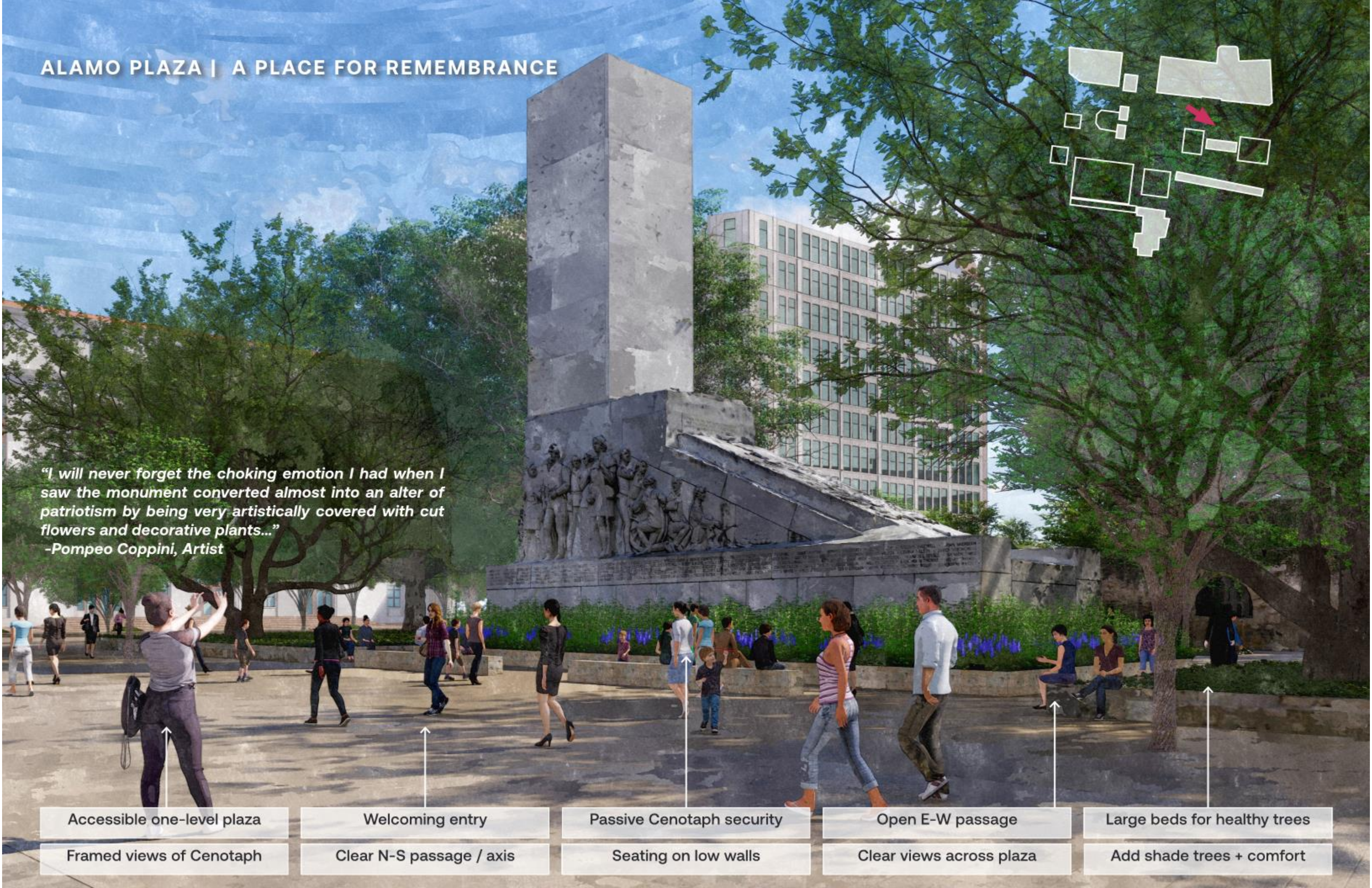
ALAMO PLAZA | EXISTING





# ALAMO PLAZA | A PLACE FOR REMEMBRANCE

*"I will never forget the choking emotion I had when I saw the monument converted almost into an altar of patriotism by being very artistically covered with cut flowers and decorative plants..."*  
-Pompeo Coppini, Artist



Accessible one-level plaza

Welcoming entry

Passive Cenotaph security

Open E-W passage

Large beds for healthy trees

Framed views of Cenotaph

Clear N-S passage / axis

Seating on low walls

Clear views across plaza

Add shade trees + comfort



ALAMO PROMENADE | EXISTING





# ALAMO PROMENADE | AN ENGAGING DISTRICT ENTRANCE



↑  
Clear views to retail  
Shaded parade viewing

↑  
Clear views to the South Gate  
Signature promenade allee

↑  
Welcoming high-vis gateway  
Clear-path for EV + Parade

↑  
Historic display areas / sculpture  
Interpretive signage

↑  
Shaded seating areas  
Bosque of trees in paving



PLAZA DE VALERO | EXISTING





# PLAZA DE VALERO | A COMMUNITY GATHERING SPACE



Clear views to South Gate  
A community-oriented space

Clear views to retail  
High-limbed shade trees

Clear views to Church  
Relocated large trees

Areas for play  
Movable furnishings

Elevated event platform  
Passive / event lawn

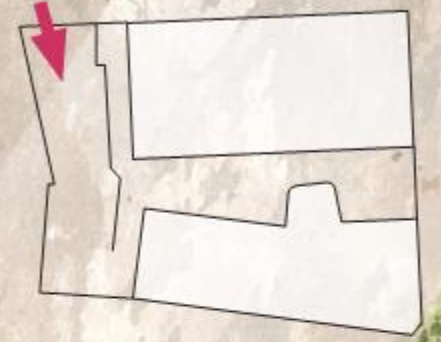


LOWER PASEO | EXISTING





LOWER PASEO | ENGAGING WITH HISTORIC ALAMO AND SAN ANTONIO



Flexible dining area

Sculpture Trail

Three-stop elevator

Stepped Rainwater Spillway

Native riverine plantings

Connection to Hyatt

Refaced walls

Connection to Visitor Center

Clear view to Alamo

Sustainable water feature



# ALAMO GARDENS | A SPACE FOR REFLECTION



Sustainable native plantings

Flowering trees

Shaded seating

Connection to Collections Bldg

Views to Prairie Collection

Protect Church foundations

Connection to Church exit



# ALAMO GARDENS | A BOTANIC SHADE GARDEN FOR EDUCATION



Protect heritage trees

Centralize fountain on arch

Refurbish fountain

New access path

Sustainable native plantings

Lush native plantings

Move fountain away from oak

Shaded seating

Clear connection to axis



A historical map of the Alamo mission grounds, showing various structures and areas. The map is drawn in a light blue/teal color on a dark background. It features several rectangular buildings, a large square area labeled "Square of Mission", and a smaller area labeled "Yard of Convent". A river or stream is shown at the bottom right, labeled "Arroyo running to La Villa". The map includes various lines, walls, and architectural details, all rendered in a sketch-like style.

# THE ALAMO

Visitor Center & Museum



# VIEW FROM THE PLAZA





## GROUND FLOOR – WEST WALL INTERPRETIVE EXHIBIT





# 4D THEATER





A historical map of the Alamo mission grounds, overlaid with a teal color. The map shows various structures and areas, including a large square labeled "Square of Mission" and a smaller area labeled "Yard of Convent". The map is oriented with the top of the page towards the right. The text "THE ALAMO" is prominently displayed in white, bold, serif font across the middle of the map. Below it, the subtitle "Interpretive Plan Update" is written in a smaller, white, sans-serif font. A white horizontal line is positioned below the subtitle.

# THE ALAMO

Interpretive Plan Update



# CONTENT – OVERARCHING THEMES

---

## Land and Resources

Why have all of these things happened here?

- ❖ Land, water, natural resources, location, evolution of built environment

---

## Culture and Exchange

How have diverse groups and perspectives come together and interacted at this site across its history?

- ❖ Cultural exchange, assimilation and acculturation, evolving identities

---

## Conflict and Debate

What has happened when groups with contrasting visions and competing interests have met here?

- ❖ War, violence, military conflict, contested spaces, contested stories

---

## Storytelling and History

How have we told stories about this site across its history, and what have those stories been?

- ❖ Conversation, exchange, storytelling and oral traditions, myth and legend

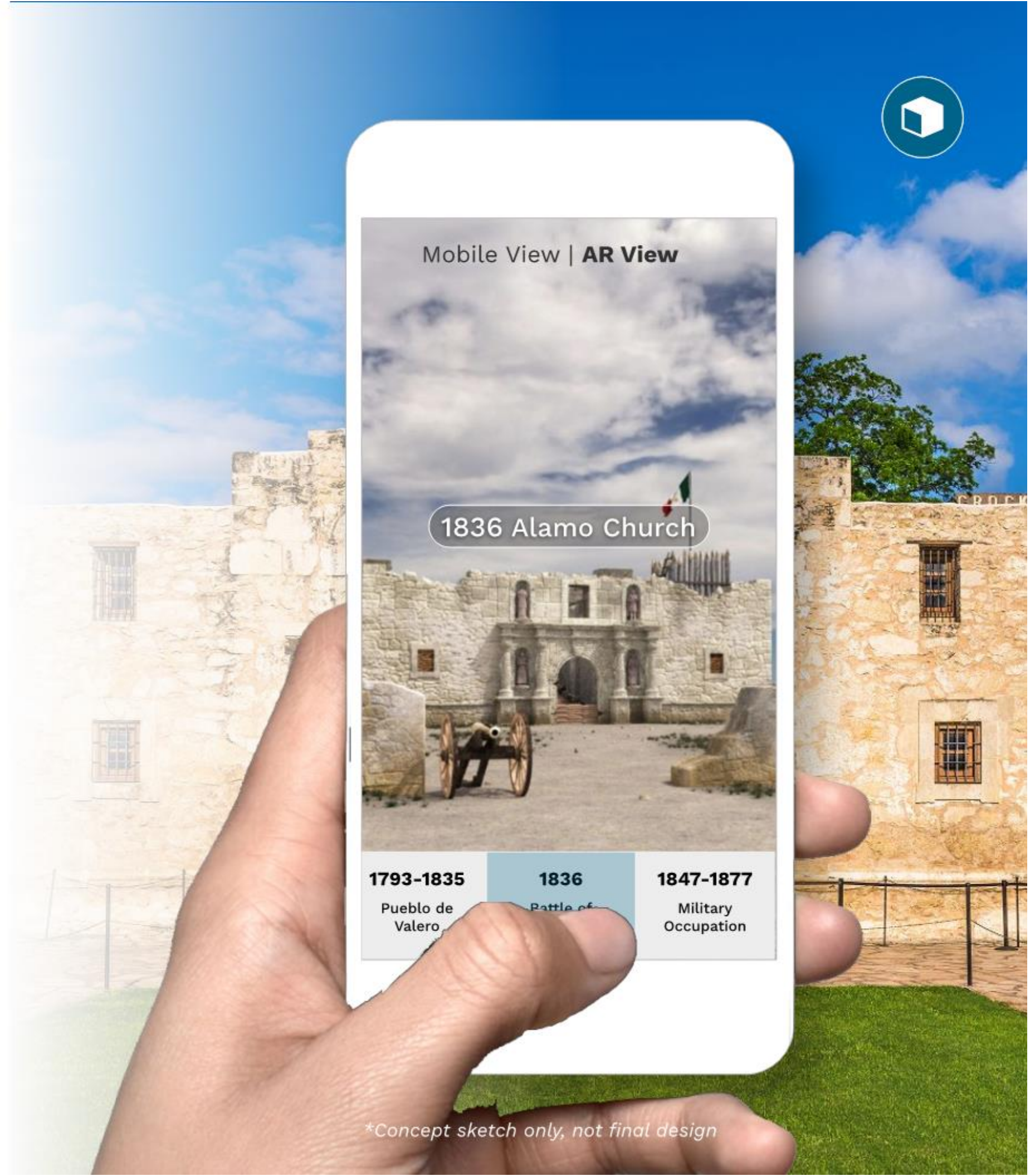


# Learn

Virtual Reconstructions (AR)

## Virtual reconstructions (AR)

- Visitors can transpose the historic footprint of the Alamo from different time periods onto present-day structures to visualize changes to the site over time.
- The view of period reconstruction would “match” where visitor is pointing phone.
- The entry points for these reconstructions will be the Primary POIs.
- Each period reconstruction could include a short intro to the history of the Alamo during that time period
- *(This is an expansion of the [blend-mode visualization](#) on the current website, but includes all significant eras, not just Battle)*







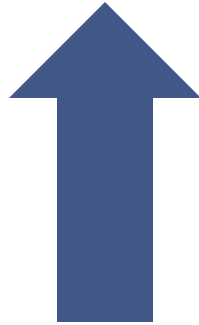
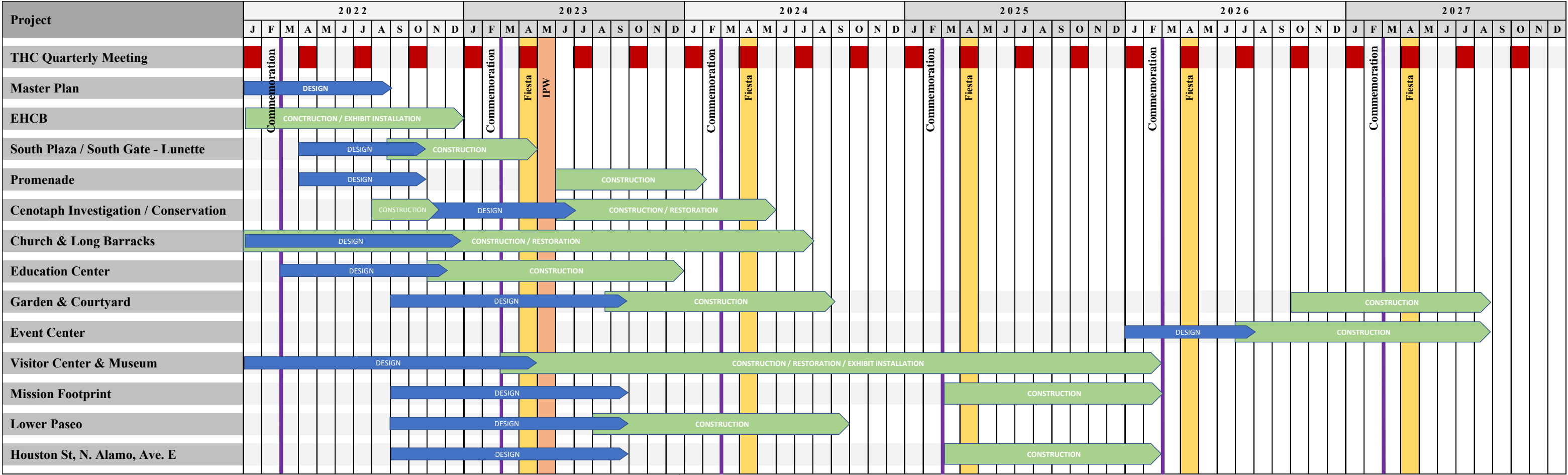
# THE ALAMO

---

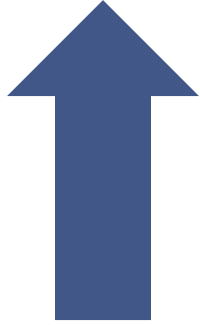
Other Projects and Preliminary Schedule



# Overview of Schedule



**EHC B**



**ED CTR**



**VC&M**









**"MORE THAN A SHRINE TO TEXAS VALOR,  
MORE THAN A LANDMARK OF AMERICAN COURAGE, THE  
ALAMO IS A MONUMENT TO HUMAN FREEDOM."**

**PRESIDENT GERALD FORD, 1976**