

Luxury BRANDS

a division of GGI WorldWide Inc.



This catalog shows an example of product that we can offer from each brand. Please note that inventory for the products shown in this catalog may not be available.



390-NSE
LONG SLEEVE EMBROIDERED
TUNIC MAXI DRESS
Retail - \$136



390-MNE
LONG SLEEVE EMBROIDERED
TUNIC MAXI DRESS
Retail - \$136



502-NSE
COVERLUXE HOODED COVER UP
Retail - \$116



377-WHE
COVERLUXE BEAD EMBROIDERED
SIDE SLIT MAXI DRESS
Retail - \$130



461-NSE
FRINGE SLEEVELESS TUNIC DRESS
Retail - \$102



706-WHE
COVERLUXE EMBROIDERED SMOCKED DRESS
Retail - \$120



706-MNE
COVERLUXE EMBROIDERED SMOCKED DRESS
Retail - \$120



706-MNT
TERRY SMOCKED DRESS
Retail - \$120



169-NSE
COVERLUXE SMOCKED DRESS
Retail - \$118



495-NSE
CABANA SHIFT DRESS
Retail - \$104

SPRING DELIVERY 1: 1/15-1/30
PREPACK - 1/S, 2/M, 2/L, 1/XL
XS AVAILABLE

CABANA CLASSIC
(EVERGREEN STYLE)



594-CG23
WICKING
PERFORMANCE
ZIP TOP
Retail - \$102

594-SP23
WICKING
PERFORMANCE
ZIP TOP
Retail - \$102

594-NP23
WICKING
PERFORMANCE
ZIP TOP
Retail - \$102



865-CG23
LONG SLEEVE
PERFORMANCE
ZIP DRESS
Retail - \$120

865-FL23
LONG SLEEVE
PERFORMANCE
ZIP DRESS
Retail - \$120

865-SP23
LONG SLEEVE
PERFORMANCE
ZIP DRESS
Retail - \$120

865-NP23
LONG SLEEVE
PERFORMANCE
ZIP DRESS
Retail - \$120



594-FL23
WICKING
PERFORMANCE
ZIP TOP
Retail - \$102

594-FB23
WICKING
PERFORMANCE
ZIP TOP
Retail - \$102

594-WM23
WICKING
PERFORMANCE
ZIP TOP
Retail - \$102

594-SN23
WICKING
PERFORMANCE
ZIP TOP
Retail - \$102



158-FB23
PERFORMANCE
ZIP DRESS
Retail - \$114

158-CG23
PERFORMANCE
ZIP DRESS
Retail - \$114

158-WM23
PERFORMANCE
ZIP DRESS
Retail - \$114



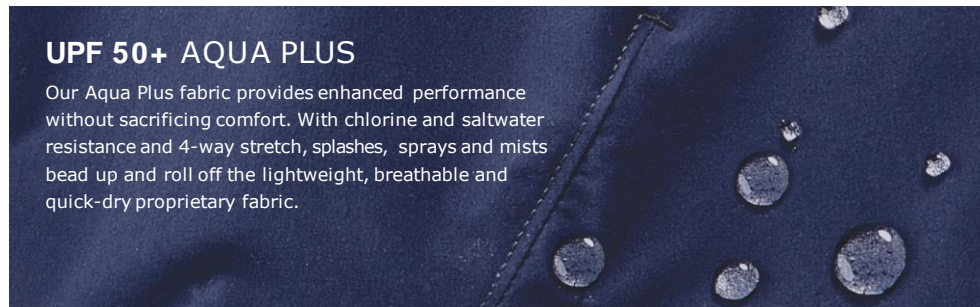
594-MNE
WICKING
PERFORMANCE
ZIP TOP
Retail - \$98

594-NSE
WICKING
PERFORMANCE
ZIP TOP
Retail - \$98

594-WHE
WICKING
PERFORMANCE
ZIP TOP
Retail - \$102

SPRING DELIVERY 1: 1/15-1/30
PREPACK - 1/S, 2/M, 2/L, 1/XL
XS AVAILABLE

CABANA CLASSIC
(EVERGREEN STYLE)



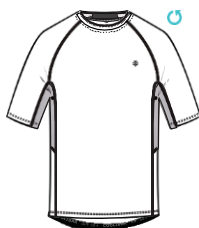
UPF 50+ AQUA PLUS

Our Aqua Plus fabric provides enhanced performance without sacrificing comfort. With chlorine and saltwater resistance and 4-way stretch, splashes, sprays and mists bead up and roll off the lightweight, breathable and quick-dry proprietary fabric.

ULTIMATE SHORT SLEEVE 03527 RASH GUARD

Fabric: Aqua Plus—
Polyester/Xtra Life Lycra® Blend

Sizes: S-XXL



White Line Texture 111-1002



Navy Line Texture
410-1002



Surf Blue
Line Texture
452-1002



Grenada Red
Line Texture
608-1002

Features:

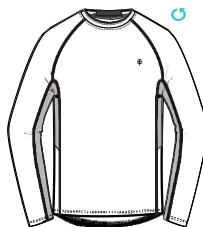
Crew neck, Eyelets at underarms for superior airflow and water drainage, Zippered storage pocket, Flatlock seams, Back hem with gripper elastic, Swim short connecting loop at inside of front hem, 27" body length (size large)

MSRP: \$69.00

ULTIMATE LONG SLEEVE 03528 RASH GUARD

Fabric: Aqua Plus—
Polyester/Xtra Life Lycra® Blend

Sizes: S-XXL



White Line Texture 111-1002



Navy
Line Texture
410-1002



Surf Blue
Line Texture
452-1002



Cobalt
Line Texture
401-1002



Grenada Red
Line Texture
608-1002

Features:

Crew neck, Eyelets at underarms for superior airflow and water drainage, Zippered storage pocket, Flatlock seams, Back hem with gripper elastic, Swim short connecting loop at inside of front hem, 27" body length (size large)

MSRP: \$75.00

ULTIMATE HALF-ZIP RASH GUARD 10421

Fabric: Aqua Plus—
Polyester/Xtra Life Lycra® Blend

Sizes: S-XXL



White Line Texture 111-1002



Navy Line Texture
410-1002



Surf Blue
Line Texture
452-1002



Cobalt Line Texture
401-1002

Features:

Half-zip neckline, Raglan sleeves with thumbholes, Back hem with gripper elastic to keep shirt in place, Flatlock seams to prevent chafing, 30½" body length (size large)

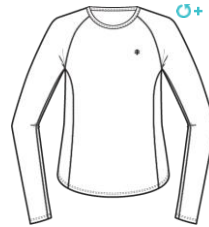
MSRP: \$89.00

HIGHTIDE LONG SLEEVE SWIM SHIRT 03273



Fabric: Aqua Classic—Polyester

Sizes: XS-3X



White 111-1000



Tropical Mint
340-1000



Baja Blue
425-1000



Black/White Stripe
900-9000



Black
001-1000



Antigua Blue
504-1000



Tropical Violet
524-1000



Blue Multi
Rio Paisley
961-1325

Features:

Crew neck, Raglan sleeve, Under sleeve and side body panels, Gripper elastic at back hem, Flatlock stitching to prevent chafing, 26" body length (size medium)

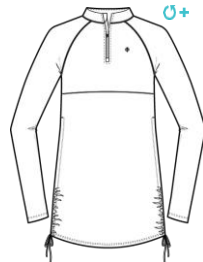
MSRP: \$65.00

LAWAI RUCHE SWIM SHIRT 03242



Fabric: Aqua Classic—Polyester

Sizes: XS-3X



White 111-1000



Navy
410-1000



Baja Blue
425-1000



Black/White Stripe
900-9000



Tropical Mint
340-1000



Baja Blue Vista Palm
425-1326



Antigua Blue
504-1000



Tropical Violet
524-1000



Blue Multi
Rio Paisley
961-1325

Features:

Stand-up collar, Quarter-zip neckline, Adjustable ruche sides for convertible length, 32" body length (size medium)

MSRP: \$89.00



Helen Jon

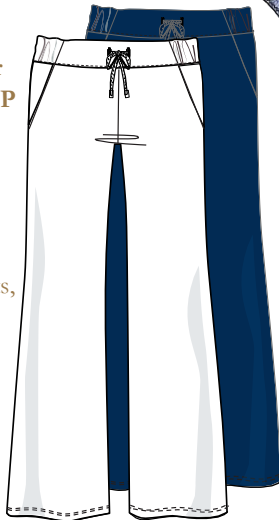
Line Essentials and Black Solids: available now

new
tortoise halter
(tie-back)(tangier)
HJLE-0118TNP
XS-L, D/DD
\$122 MSRP



new
tortoise hipster
HJLE-0319TNP
XS-L (tangier)
\$100 MSRP

weekender pant*
(angled front pockets,
full length,
30 1/4" inseam)
HJLE-0911WTS
HJLE-0911NYS
XS-L
\$128 MSRP



new
olivia one-piece
(adjustable straps)
HJLE-0435TNP
XS-XL (tangier)
\$196 MSRP



vegan Hip Hops
(tangier)
HJLE-0804TNP
6-10 (whole sizes)
\$50 MSRP

kimberly bandeau
dress* (two-ply fabric
bodice, above knee
length)
HJLE-0777NYS
XS-L
\$196 MSRP

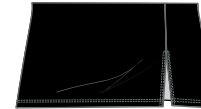


hooded terry cover-up
HJ05-0706 (TNP) (tangier)
XS-XL
\$112 MSRP



toga bra
(adjustable strap,
with removable adjustable
strap for opposite shoulder,
strap
hook back)

HJ26-0157BKS
XS-L
\$142 MSRP



skirted bottom
with side slit
(attached hipster)
HJ26-0344BKS
XS-XL
\$98 MSRP

toga one-piece
(higher leg, high back,
adjustable strap,with
removable adjustable
strap
for opposite
shoulder)

HJ26-0440BKS
XS-XL
\$206 MSRP



amelia dress*
(off the shoulder)
HJLE-0788BKS
XS-L
\$138 MSRP



swim: 82% nylon / 18% spandex
lining: 85% nylon / 15% spandex

amelia dress: 50% organic cotton / 50% cotton slub jersey *eco-friendly fabric
pant: 100% organic crinkle cotton *eco-friendly fabric

kimberly dress: 93% micro modal/ 7% lycra

*eco-friendly fabric



terry hoodie: 60% poly / 40% rayon
trim for hoodie: 82% nylon / 18% spandex

TRADEWIND TECHNOLOGY™ - SHIRTS



ISLAND FRIEZE SS ISLAND FRIEZE SS ISLAND FRIEZE LS COOL BEAMS SS

<i>Style:</i> 2007MT83 <i>Season:</i> SUMMER/...	<i>Style:</i> 2007MT83 <i>Season:</i> SUMMER/...	<i>Style:</i> 2008MT83 <i>Season:</i> SUMMER/...	<i>Style:</i> 2007MT80 <i>Season:</i> SUMMER/...
<i>Color:</i> NAVY	<i>Color:</i> SPICE	<i>Color:</i> NAVY	<i>Color:</i> NAVY
<i>Avail:</i> MAY 22 2023 <i>MSRP:</i> \$115.00	<i>Avail:</i> MAY 22 2023 <i>MSRP:</i> \$115.00	<i>Avail:</i> MAY 22 2023 <i>MSRP:</i> \$128.00	<i>Avail:</i> MAY 22 2023 <i>MSRP:</i> \$115.00
<i>Sizes:</i> XSM - 3XL	<i>Sizes:</i> XSM - 3XL	<i>Sizes:</i> XSM - 2XL	<i>Sizes:</i> XSM - 3XL

Enhanced Stretch, Moisture Wicking, Quick Dry Properties, Wrinkle Resistant, UPF Sun Protection.



COOL BEAMS SS COOL BEAMS LS COOL BLOCK PARTY SS COOL BLOCK PARTY SS

<i>Style:</i> 2007MT80 <i>Season:</i> SUMMER/...	<i>Style:</i> 2008MT80 <i>Season:</i> SUMMER/...	<i>Style:</i> 2007MT82 <i>Season:</i> SUMMER/...	<i>Style:</i> 2007MT82 <i>Season:</i> SUMMER/...
<i>Color:</i> RED SUNSET	<i>Color:</i> NAVY	<i>Color:</i> BLACK	<i>Color:</i> SKY BLUE
<i>Avail:</i> MAY 22 2023 <i>MSRP:</i> \$115.00	<i>Avail:</i> MAY 22 2023 <i>MSRP:</i> \$128.00	<i>Avail:</i> MAY 22 2023 <i>MSRP:</i> \$115.00	<i>Avail:</i> MAY 22 2023 <i>MSRP:</i> \$115.00
<i>Sizes:</i> XSM - 3XL	<i>Sizes:</i> XSM - 2XL	<i>Sizes:</i> XSM - 3XL	<i>Sizes:</i> XSM - 3XL

Enhanced Stretch, Moisture Wicking, Quick Dry Properties, Wrinkle Resistant, UPF Sun Protection.

Scrunchie

The wire-edged brim can be adjusted to match every mood – down for shy or curvy waves for fun and flirty.

4½" brim. Inner drawstring adjusts fit. Packable. 100% polyester. Handwash cold. M (58cm).

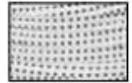
Style: SCR (023)



Retail - \$48.00



solid white



white/black dots



natural/brown dots



coral/white dots



hydrangea/white dots



slate/white dots



grey/white dots



navy/white dots



solid black



black/white dots

Note: Pricing & availability are subject to change depending upon when orders are received. All gifting events will require 50% down when placing order.

GREAT
FOR MEN &
WOMEN



Justin

Everyday style for men with impeccable taste.
2" brim. Inner drawstring adjusts fit. Packable. 100% paper braid exclusive of trim. Spot clean. M/L (59cm) and L/XL (61cm).

Style: JUS (022-5) Retail - \$48.00



natural

UPF
30+



Palmer

This lightweight fedora is great for travel - just throw it in your suitcase and go. It bounces right back!

3½" brim. Inner drawstring adjusts fit. Packable. 100% paper braid exclusive of trim. Spot clean. M/L (59cm) and L/XL (61cm).

Style: PAL (025) Retail - \$52.00



natural

UPF
50+

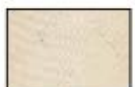


Avery

Lightweight sophistication for hot summer days. Metal eyelets provide air flow to cool you down.

2½" brim. Inner drawstring adjusts fit. Packing not recommended. 100% Japanese glazed paper exclusive of trim. Do not wash. M/L (59cm) and L/XL (61cm).

Style: AVE (027) Retail - \$58.00



natural



Charleston

Perfect for a weekend getaway, this twisted seagrass hat is island inspired. Removable chin strap with adjustable toggle. Metal eyelets and a faux suede band.

3" brim. Inner drawstring adjusts fit. Packing not recommended. 100% seagrass exclusive of trim, cotton lining. Spot clean. M/L (59cm) and L/XL (61cm).

Style: CHAR (025)



natural

Retail - \$52.00

UPF
50+



Acapulco
\$59 USD



Bohemian
\$59 USD



Bora Bora
\$59 USD



Between Two Palms
\$59 USD



Cali Sunset
\$59 USD



Inca
\$59 USD