



Stantec Consulting Services Inc.
733 Marquette Avenue, Suite 1000
Minneapolis MN 55402-2314

October 3, 2023
Proposal No: 951958

Ms. Susie Gilbert
712 Riverside Dr. N.
Hudson, WI 54016

**RE: SCOPE OF WORK FOR ENVIRONMENTAL CONSULTING SERVICES
LAKE MALLALIEU DREDGING FEASIBILITY STUDY
ST. CROIX COUNTY, WISCONSIN**

Dear Ms. Gilbert:

Stantec Consulting Services Inc. (Stantec) is pleased to present this proposal to complete a Dredging Feasibility Study (Study) to the Lake Mallalieu Association (LMA; Client) for the dredging of soft sediments from within Lake Mallalieu (Project). It is Stantec's understanding that LMA will be awarded a grant from the State of Wisconsin to fund this Study and to support dredging of Lake Mallalieu soft sediments that were deposited by series of upstream breaches in the Willow River Dam (Little Falls Lake) from 2015-2019. A dredging feasibility study is needed to define the project extents, determine volume of dredge material and disposal options, develop cost estimates for sediment dredging and disposal, and coordination with regulatory authorities. This letter proposal provides the scope of work, schedule and estimated fees for Stantec to conduct the dredging feasibility study in Lake Mallalieu for LMA which includes coordination with regulatory agencies and application submittals.

This proposal includes the scope of services, tasks, cost estimate, project schedule, and terms and conditions. Stantec will initiate this project immediately upon receipt of an executed Professional Services Agreement included in Attachment A.

BACKGROUND AND APPROACH

Lake Mallalieu is located in the City and Village of Hudson in St. Croix County, Wisconsin and is an impoundment of the Willow River. The lake is approximately 289 acres in size with a maximum water depth of 20 feet. The lake is located in portions of Sections 13, 18, 19 and 24, Township 29N and Range 19 and 20W, St. Croix County, Wisconsin.

Soft sediment was deposited in Lake Mallalieu by a series of breaches in the Willow River Dam (Little Falls Lake) from 2015 thru 2019 when a new dam was constructed. A desktop analysis of aerial imagery and available gage data from the United States Geological Survey (USGS) was conducted by Stantec in 2021. That analysis determined that high concentrations of total suspended sediments (TSS) and total phosphorus (TP) were observed during the breach period but were not common during the dammed period from the period of interest (2015-2019). Stantec's findings were documented in a technical memorandum titled "Lake Mallalieu Desktop Analysis". The information provided in this current study and by the Client was used as the basis for this our approach, scope, and cost provided in this proposal.

This Project will require a phased environmental and engineering approach consistent with Wisconsin Department of Natural Resources (WDNR) and U.S. Army Corps of Engineers (USACE) regulations and permitting requirements. The initial phase described in this proposal includes baseline data collection and preliminary design to comply with NR 347 requirements. Future phases

Reference: Lake Mallalieu Dredging Feasibility Study, St. Croix County, Wisconsin

include final design and implementation. Our staff is uniquely qualified to complete this Feasibility Study. We have worked extensively with local WDNR and USACE staff on similar projects throughout Wisconsin and feel strongly that our knowledge of the local landscape and reputation with agency staff will be valuable in assessing the feasibility and estimated costs of the planned dredging activities.

SCOPE OF SERVICES

This scope of services describes the desktop review, field data collection and preliminary design and permitting tasks required to assess the feasibility of dredging soft sediments from Lake Mallalieu and the targeted portion of the Willow River. This Project is part of a phased approach that includes the following:

- Phase I - Dredging Feasibility Study and Preliminary Design
- Phase II – Final design and permitting, bidding and contractor selection
- Phase III – Construction implementation

The scope of services and costs presented below represent Phase I of the Lake Mallalieu Dredging Project.

TASK 1.0. AGENCY COORDINATION

Stantec will initiate a pre-application meeting with the WDNR and USACE staff assigned to the Hudson, Wisconsin region to notify them of the pending project. The initial discussion will focus on the sedimentation issue in upper Lake Mallalieu, the observed impacts on recreation and ecology of the lake and the proposed solution of dredging to improve these beneficial uses. This meeting will set the stage for the development of the NR347 Preliminary Application filing detailed in Task 5 below.

Prior to the agency pre-application meeting, Stantec will coordinate up to two (2) conference calls and one site visit with representatives of the Lake Mallalieu Association, legal counsel and other interested parties. These meetings will assist the group with developing the proper approach to this project from a scientific, construction and legal standpoint. Following each meeting, Stantec will develop meeting minutes and distribute them to the Project team and Client for review and concurrence.

Following submittal and review of the NR347 Preliminary Application, Stantec will participate in up to two additional Project meetings with representatives from the Lake Mallalieu Association, legal counsel, WDNR and U.S. Army Corps of Engineers. These meetings will be held to discuss the WDNR findings and recommendations (potential additional sampling and data collection) following the preliminary dredging application review and to assist with the development of the final Project design, permitting.

TASK 2.0. BATHYMETRIC AND SOFT SEDIMENT SURVEY

A current partial bathymetry survey of the project extent in Lake Mallalieu is essential to the development of the feasibility study. Water depth is a limiting factor when determining the best and most cost-effective dredging method to employ. Typically, a floating hydraulic dredge unit

Reference: Lake Mallalieu Dredging Feasibility Study, St. Croix County, Wisconsin

requires at least 18 inches of water to operate. Depth of soft sediment is also a critical component in determining the vertical limits of dredging.

Task 2.1 Bathymetric Survey

Stantec will complete the bathymetric survey of Lake Mallalieu within an approximately 100-acre study area that includes the upper (north-eastern) portion of the lake and approximately 750 feet of the main Willow River channel, and two adjacent channels. This survey will provide valuable information on the depth of water in the various main lake, bay and channel portions of the Lake that have been targeted for dredging. The study areas for this Project are depicted in Attachment B.

Stantec will utilize a low draft remotely-operated hydrographic survey boat (Z-Boat 1800, developed by Oceanscience Group), equipped with a single-beam echo sounder and RTK GNSS antennae mounted on the vessel. Guided by the operator on shore or within a boat, continuous measurements of the depth under the boat will be collected as it follows a pre-determined set of transects across the lake. The Z-Boat's long range wireless link is used to transmit the boat's location data to the handheld acquisition receiver display. This allows the operator to guide the boat and examine in real-time, the boat position, heading and completed survey track. Depth soundings and GNSS positions are acquired using HydroMagic software and stored onboard the unit. Once complete, the data collected on the unit is downloaded onto a computer and then exported into GPS survey software for post-processing.

Stantec will establish track lines (transects) oriented approximately perpendicular to the longitudinal axis of the reservoir. Additional transects will be used within the three Willow River channels shown in Attachment B. Transects will be spaced at approximately 50-foot intervals across the Lake. If issues arise during the survey, the operator can increase accuracy by adding transects, or delete transects in areas where the water is too shallow. Along the survey transects, the boat will record depths at approximately 25-50 foot intervals or less if needed.

Task 2.2 Soft Sediment Survey

To develop the dredging plan, it is necessary to survey the depth of soft sediment within Lake Mallalieu and the defined, lower reaches of the Willow River. Based on a historic aerial photo review, the majority of soft sediment released following the various dam breaches deposited within the braided channel sections of the lower Willow River and the Lake Mallalieu "delta" area. Subsequent discussions with the Client indicated that additional depositional areas may include the north and south bays immediately adjacent to the delta. A figure depicting the preliminary dredging target areas is included in Attachment C.

Soft sediment depths will be surveyed utilizing a combination of poling and vibratory sampling along pre-determined transects within Lake Mallalieu and the lower Willow River. Lake Mallalieu is characterized as a eutrophic lake by the WDNR; therefore, the composition of the lake substrate prior to the dam breaches is assumed to be highly organic in nature and composed of leaf litter and dead vegetative matter. Sediment released as a result of the dam breaches was likely composed of silt, sand and other mineral based materials. This sediment is likely different from the "native" lake substrate in texture, consistency and color. Due to the different sediment

Reference: Lake Mallalieu Dredging Feasibility Study, St. Croix County, Wisconsin

compositions, we expect that a dividing line between the organic lakebed material and newly deposited material will be evident.

As stated above, prior to the soft sediment survey, a survey grid will be developed to aid field staff in the survey effort. The survey grid will be developed within GIS and uploaded to a hand-held sub-meter accurate GPS unit. Within Lake Mallalieu, the grid will be laid out in an east-west orientation and each sampling point will be spaced approximately 100 feet apart. Within the Willow River channel segments, the grid will be oriented down the center of the channel and spaced at 100' intervals. In areas of the channel wider than 100 feet, two parallel grid transects spaced at 1/3 and 2/3 channel width will be surveyed. At each survey point, a GPS point will be taken that includes sediment attributes such as sediment depth, texture and consistency.

Based on NR347 guidance, the dredging of sediment from a waterbody may only commence to the depth of native sediment (hard pan). Typically, the soft sediment to hard pan interface is easily determined by poling into the soft sediment until resistance or refusal is attained. In lake or stagnant water environments with highly organic substrate overlain with newly deposited sediment, this depth can be difficult to determine as the native lake substrate and recently deposited sediment are typically flocculant and unconsolidated in nature. These similar characteristics can make it difficult to determine where the native lakebed material ends, and the newly deposited sediment begins. Therefore, the use of a suction tube or vibratory type sampler is necessary. This sampling technique is done by driving a vibratory core sampler into the lakebed. The resulting core sample is then characterized to determine the depth of newly deposited sediment. Sediment poling is most effective in areas that contain that contain water flow and soft sediment overlaying native, hardpan. Poling surveys are completed by driving a survey pole into the sediment until resistance or refusal is encountered. The depth of water and the depth of soft sediment is recorded from the survey rod. As stated above, a handheld GPS unit will be used at each sediment survey location to record the sediment depth.

The soft sediment survey will be completed during one mobilization and at the same time as the bathymetric survey and soft sediment sampling tasks described below.

Task 2.3 Reporting

The soft sediment surveying methodology and results will be summarized in a feasibility summary report. This report will include information collected during Tasks 2, 3 and 4. The resulting bathymetric and soft sediment survey data will be imported into a 3D CAD map of Lake Mallalieu and used to determine volumes of soft sediment proposed for dredging. An "as-built" 3D map of the proposed dredging areas will also be developed to graphically show the resulting lake contours following the dredging activities.

This report will be shared with the Client. Copies will be provided to the WDNR upon request.

TASK 3.0. SOFT SEDIMENT SAMPLING

Sediment sampling is performed to characterize the soft sediment for the purpose of identifying potential risk to human health and the environment that may occur during the dredging and disposal process. The analysis of the physical and chemical characteristics of soft sediment

Reference: Lake Mallalieu Dredging Feasibility Study, St. Croix County, Wisconsin

chemical constituents is required under NR 347. This code contains a list of sediment sampling parameters and suggested laboratory analytical methods (with detection limits) for each sample collected within the proposal dredging limits. These analyses are necessary to determine disposal requirements.

The task descriptions provided below represent the preliminary level of sediment sampling required for the submittal of the NR 347 Preliminary Application. Based on the analytical results of these preliminary samples, and per NR 347, the WDNR may waive the requirement for additional sampling (NR 347.06 (3)(a), Adm. Code), require sediment or soil sampling at the disposal location(s) (NR 347.06 (3)(c), Adm. Code) or require additional sediment sampling within the proposed dredging limits (NR 347.06 (6)(c), Adm. Code).

Task 3.1 Soft Sediment Sampling and Analysis Plan

Stantec will develop a preliminary soft sediment analysis plan that will include the sampling methodology, sampling locations and depth, and NR347 sediment list of parameters and laboratory information (including credentials and QA/QC plan). This plan will not be submitted to WDNR, but rather used as a guide for the Client to understand the protocols implemented during this phase of the Project.

As stated above, should the WDNR require additional sediment sampling, the preliminary sampling plan will be updated and submitted to the department for review. Per the NR347 protocol, this updated sampling plan will include:

- Parameters to be analysed for, including analytical methods and detection levels
- Updated sampling location map
- Planned sectioning of cores at each sample location
- Sampling methods and sample handling procedures
- Analytical laboratory certified under NR 149, Adm. Code to conduct parameter analysis

Once WDNR reviews and approves this revised plan, Stantec will commence with the collection of the additional sediment samples (if required).

Task 3.2 Sediment Sample Collection and Laboratory Analysis

Stantec will collect a total of four (4) soft sediment samples within the proposed dredging limits. The samples will be collected to a maximum depth of 2 feet. The locations of the preliminary sediment samples are included in Attachment B.

Sampling will be completed at the same time as the bathymetric and soft sediment depth surveying will be completed. Sampling will be completed from a flat-bottomed boat. The samples will be collected using a 2-inch diameter vibracore sample tube with clean high-density plastic liner. The sampling tube will be pushed into the soft sediment; once the maximum depth is reached, the tube will be sealed and recovered from the lake bottom. Accumulated water within the sampler will be decanted into a bucket and the plastic tube liner will be removed for profile description and sampling. The resulting 2-foot sediment sample will be placed into a clean container and homogenized. A composite sample will be taken and placed into a laboratory approved container. Sample containers will be appropriately marked, placed in a cooler with ice, custody sealed and

Reference: Lake Mallalieu Dredging Feasibility Study, St. Croix County, Wisconsin

either hand delivered or shipped overnight to a qualified laboratory for analysis. To prevent cross contamination, all equipment will be cleaned with deionized water and brushes between sampling locations.

Sediment samples will be sent, under custody seal, to a qualified laboratory and analysed for compounds specified in Table 1, WDNR NR 347.06 (6b) Adm. Code. Compounds to be analysed include arsenic, cadmium, chromium, copper, lead, mercury, nickel, zinc, total phosphorus, nitrate+nitrite, ammonia-nitrogen, total Kjeldahl nitrogen, PCBs (total), total organic carbon, particle size and moisture content. The laboratory will provide a sample analysis summary that includes raw sample results and comparisons to established background levels for each component.

Task 3.3 Sediment Sampling Reporting

The sampling methodology and laboratory results from the preliminary sampling event will be summarized in a feasibility summary report (including Tasks 2, 3 and 4). This report will contain information pertaining to the collection of the samples, locations, depths, list of compounds analysed for, and laboratory results. Stantec will also compare the sediment analysis for Lake Mallalieu with State of Wisconsin reference standards for the various compounds detected.

This report will be shared with the Client. Copies will be provided to the WDNR upon request.

ASSUMPTIONS

- Sediment sampling will be completed by two Stantec personnel
- Sample chain of custody and shipment or delivery to a qualified laboratory will be the responsibility of Stantec
- Sampling will be completed during one field mobilization and all attempts will be made to complete the sampling during the bathymetric and soft sediment surveying tasks
- Sampling will be conducted from a boat provided by Stantec or through the ice if sampling is completed during winter months
- Weather conditions may affect schedule
- Because of the uncertainty of WDNR requirements for additional sampling, costs provided do not include any additional sampling that WDNR may require once the sampling plan or preliminary results are reviewed

TASK 4.0. WILLOW RIVER GEOMORPHIC ASSESSMENT

The Willow River Dam is located approximately 2 miles upstream of Lake Mallalieu and impounds Little Falls Lake. Based on Stantec's previous desktop analyses, it appears that a substantial amount of sediment was deposited in the lower 1,500 feet of the Willow River and the Lake Mallalieu "delta." However, these high-flow and high sediment load events also resulted in substantial deposition of sediment within the Willow River channel and floodplain upstream of Lake Mallalieu. This deposition likely modified the geomorphology of the river and adjacent riparian areas and adversely impacted natural geomorphic functions and recreational use of the waterway.

To determine the risk of further mobilization and deposition of soft sediment to Lake Mallalieu from within the Willow River channel and floodplain, a geomorphic assessment will be completed. The assessment will be completed within the Willow River channel from immediately downstream of the

Reference: Lake Mallalieu Dredging Feasibility Study, St. Croix County, Wisconsin

Willow River dam to the braided channel segment 1,500 feet upstream of the Lake Mallalieu delta (area of interest). The resulting information will be used to guide the development of the dredging design and to account for sediment loads that could be mobilized and deposited during various flow events. This assessment will evaluate the risk of sediment mobilization to Lake Mallalieu in the future following proposed dredging activities.

Task 4.1 Desktop Review

A desktop review of available information on the Willow River channel and dam will be completed prior to the field survey task described below. This information will provide a baseline view of the Willow River, its flow regime and dam operation specifics. Information from the October 2022 Stantec desktop analysis will be used if applicable to the geomorphology of the Willow River. Specific information to be reviewed include:

- Streamflow records
- Precipitation records
- Dam operational records (specific to corresponding streamflow)
- Existing hydraulic and floodplain modelling (HEC-HMS and HEC-RAS)

Task 4.2 Field Survey

Stantec will complete a geomorphic field survey of the area of interest described above to assess the level of sediment deposition and physical processes within the channel and floodplain areas. The area of interest will be surveyed utilizing a combination of kayaks, canoes and pedestrian surveys within the floodplain. Areas of sediment deposition within the channel and floodplain will be mapped using a handheld GPS unit. At each deposition location within the channel and floodplain, an assessment of the sediment volume, stability and risk of mobilization will be recorded. Additionally, up to 6 channel/floodplain cross sections and 3 longitudinal profiles will be surveyed to provide geomorphic and channel dimension data. At each channel cross section, a qualitative sediment survey will be completed (sediment particle size and type) for use in developing sediment transport modelling for the area of interest. Finally, a visual assessment and documentation of areas of bank erosion will also be completed. If areas of substantial bank erosion are observed, a Bank Erodible Hazard Index (BEHI) and Near Bank Stress (NBS) assessment will be completed.

Task 4.3 Geomorphic Analysis

Using the information obtained from the desktop review and field survey tasks described above, Stantec will develop a graphical representation of the sediment stored in the Willow River channel and floodplain and provide information regarding the risk of re-suspension and deposition within Lake Mallalieu.

Stantec will upload the geomorphic assessment data into the RiverMorph® software. This software applies commonly accepted principles of fluvial geomorphology to assess streams, develop hydraulic and sediment transport (via subroutines FLOWSED and POWERSED) modelling, and aid in stream design. This software will also aid in the determination of the level of departure from the natural functioning channel prior to the dam breaches.

Reference: Lake Mallalieu Dredging Feasibility Study, St. Croix County, Wisconsin

Stantec will provide a single plan sheet, profile sheet, typical channel sections and corresponding narrative to serve as a discussion aid for the identification of the potential next steps to address sediment loads delivered to Lake Mallalieu from the Willow River. As stated above, this information will also guide the development of the dredging design to account for additional sediment that may be mobilized and transported down the Willow River and into Lake Mallalieu.

TASK 5.0. DREDGING AND DISPOSAL DESIGN

Stantec will develop a preliminary dredging and disposal engineering design that will be used for discussions with the Client and legal counsel. The results of these discussions and any modifications to the dredging extents made will guide the development and implementation of the NR347 Preliminary Application and interactions with agency staff.

Once field data collection is complete, the preliminary design will be revised into a 30% Conceptual Design for incorporation into a formal NR347 Preliminary Application. The intent of the preliminary design will be to convey the general dredging approach, document existing site constraints, identify potential challenges and to graphically define the approximate dredging area, disposal location(s) and other major project components (construction access, dewatering locations, hydraulic dredge hose routes, etc.). Components included in the preliminary design will include:

- Project area
- Existing constraints
- Environmental concerns
- Dredging areas, depths and volumes
- Construction access route(s)
- Equipment laydown yard (s)
- Dewatering setup
- Hydraulic hose routing
- Possible disposal locations

The design will focus on removing soft sediment within the northeast portion of Lake Mallalieu and approximately 1,500 feet of the Willow River channel. Additional focus includes two side channels used for recreational access by local landowners. Additional components that will be evaluated include options for enhancing aquatic habitat types and additional recreational access routes within the lower Willow Creek area. We will work with the Client and legal counsel to ensure key issues are considered, including how to access the site, proposed disposal locations, site preparation, locations of equipment storage areas, schedule, costs, permitability. Stantec will develop 30% Conceptual Design Construction Documents based on the design figures and the desktop and field data. The 30% Conceptual Design Construction documents are anticipated to include the following:

- 30% - Conceptual Plan Set – PDF format (11"x17" at Standard Engineer's Scale)
- 30% - Engineer's Estimate of Project Quantities – Table included in the Preliminary Plan Set
- 30% - Conceptual Design - Engineer's Opinion of Probable Cost - 8 ½" x 11" Table PDF format
- 30% - Conceptual Design – Technical Memorandum – Engineer's Calculations (Draft)
- 30% - Conceptual Design – Erosion Control and Dewatering Plan

Reference: Lake Mallalieu Dredging Feasibility Study, St. Croix County, Wisconsin

ASSUMPTIONS

- One round of preliminary design comments will be reviewed by the Client within two weeks of submitting the deliverable. Comments will be incorporated into the final design.
- Plan set to be produced in CAD format. Plan set documents will be available in PDF format only.
- All proposed work will be included in an inventory table to include coordinates and elevations (if applicable).
- Stantec standard drafting and detail symbols and line-types will be used.
- Standard specifications from WDNR/St. Croix County/WisDOT/others will be used where appropriate (e.g. – silt fence, construction entrance, etc.). If additional technical specifications are needed to depict the work shown in the drawings, they will be described in writing in the Construction Documents.
- The deliverable for this task is not suitable for contractor bidding. The design will be preliminary in nature and will require finalization once agency approval is granted.
- Analysis does not include HEC-RAS hydraulic channel modelling, Flood Insurance Rate Maps (FIRM) maps revisions (CLOMR, LOMR), and climate modelling.

TASK 6.0. NR347 PRELIMINARY APPLICATION

Stantec will develop and submit to WDNR the preliminary dredging information for this Project. This information is required per NR 347.05 (1). The application package will be submitted to the WDNR Water Resource Management Specialist for St. Croix County, Wisconsin. The required information that must be submitted to the WDNR pursuant to NR 347.05 (1), Adm. Code includes:

- Name of waterbody and location of project
- Volume of material to be dredged
- Brief description of dredging method and equipment
- Brief description of proposed disposal method and location
- Brief description of known historical chemical use in the waterbody for vegetation / algae control, including year, chemical, and amount applied.
- Any previous sediment sampling and analysis data from the area to be dredged
- A copy of a map showing the area to be dredged, the depth of cut, the specific location of the proposed sediment sampling sites and the bathymetry of the area to be dredged
- Anticipated starting and completion dates of the proposed project.

The preliminary application submittal will include the project narrative, conceptual drawings, site photos and preliminary sampling location mapping and analytical results. Stantec will submit the application to the Client for one round of review and edits. WDNR is required to respond to the preliminary application within 30 business days (per NR 347.05 (2), Adm. Code).

ASSUMPTIONS

Reference: Lake Mallalieu Dredging Feasibility Study, St. Croix County, Wisconsin

- Dredging design, volumes and disposal locations will be provided in this application will be conceptual in nature. Consultation with the WDNR following submittal may require that changes to the preliminary design be made. Changes to the preliminary design following WDNR consultation are not included in this scope of services.
- WDNR, USACE, USFWS and St. Croix County will make the final determination on permitting requirements.
- WDNR Chapter 30 Dredging Permit and Section 401/404 Water Quality permitting is not included in this scope of services. These applications will be developed as part of Phase II of this Project.
- Per WDNR consultation following NR347 preliminary application filing, additional bathymetric, soft sediment depth and soft sediment sampling may be required. These additional tasks are not included in this scope of services and will be handled as a separate change order.
- Stantec will complete one round of edits from the Client prior to submittal to WDNR.
- At this time, a Low Hazard Grant of Exception (LHE) is not needed. Per WDNR guidance, this process will be initiated once additional sampling results (if required) are known and final disposal options are developed.
- Up to two agency conference calls are included in this scope of services.

TASK 7.0. PROJECT MANAGEMENT

Stantec will interact with the internal Lake Mallalieu Project team and agency staff through regular project team meetings hosted via teleconference. For this task, Stantec assumes one 60-minute conference call each month for up to 10 months (beginning November 2023). Up to three Stantec staff will attend one on-site Project meeting with the Client and their legal counsel. This task also includes the following:

- Staffing and scheduling
- Administrative tasks
- Invoicing
- Implementation of the Stantec Quality Assurance/Quality Control (QA/QC) plan.

FEE ESTIMATE

Stantec will complete the tasks outlined in the Scope of Services on **a time and materials basis for an estimated fee of \$187,650**, including reimbursable expenses (mileage, copying charges, etc.). The scope of work described in this proposal letter specifies the actions needed to complete a dredging feasibility study for Lake Mallalieu based on our professional experience with similar projects. If additional services or tasks needed to complete project objectives are identified, Stantec will coordinate with LMA (and WDNR as appropriate) to reach consensus on a resolution to attempt to keep the project on budget and on schedule.

Reference: Lake Mallalieu Dredging Feasibility Study, St. Croix County, Wisconsin

Task	Task Description	Cost
TASK 1.0	AGENCY COORDINATION	\$16,900
TASK 2.0	BATHYMETRIC AND SOFT SEDIMENT SURVEY	
Task 2.1	Bathymetric Survey	\$11,850
Task 2.2	Soft Sediment Survey	\$10,500
Task 2.3	Reporting	\$5,300
	Task 2.0 Reimbursable Expenses	\$3,900
TASK 3.0	SOFT SEDIMENT SAMPLING	
Task 3.1	Soft Sediment Sampling and Analysis Plan	\$5,700
Task 3.2	Sediment Sample Collection	\$5,900
Task 3.3	Sediment Sampling Reporting	\$7,700
	Task 3.0 Reimbursable expenses	\$6,000
TASK 4.0	WILLOW RIVER GEOMORPHIC ASSESSMENT	
Task 4.1	Desktop Review	\$7,750
Task 4.2	Field Survey	\$23,250
Task 4.3	Geomorphic Analysis	\$20,300
	Task 4.0 Reimbursable expenses	\$4,950
TASK 5.0	DREDGING AND DISPOSAL DESIGN	\$33,800
TASK 6.0	NR347 PRELIMINARY APPLICATION	\$11,850
TASK 7.0	PROJECT MANAGEMENT	\$12,000
	TOTAL COST	\$187,650

Assumptions associated with these cost estimates are provided in the Scope of Work and Assumptions sections above. If there are changes to the costs or the Scope of Work that will cause the estimated fees to be exceeded, Stantec will contact the Lake Mallalieu Association for approval to proceed. Stantec reserves the right to reallocate budgets between tasks and subtasks. Stantec will complete other tasks, extra services, and/or attend meetings in addition to the outlined scope of services, as authorized by the Client, on a time and materials basis.

PROJECT SCHEDULE

Stantec will initiate this project upon receipt of a signed proposal and is anticipated to be completed by December 31, 2024.

Upon review and acceptance of the proposal and attached Professional Services Agreement, please return a signed electronic copy of the Agreement to your project manager, Dendy Lofton.

If you have any questions, or require any additional information, please call or email Dendy at 612-712-2072 or dendy.lofton@stantec.com. We look forward to working with you on this project.

October 3, 2023
Ms. Susie Gilbert
Page 12 of 12

Reference: Lake Mallalieu Dredging Feasibility Study, St. Croix County, Wisconsin

Sincerely,

STANTEC CONSULTING SERVICES INC.



John Wiater
Senior Associate



Dendy Lofton PhD, CLM
Associate, Senior Project Manager

This Agreement is made and entered into effective (October 3, 2023) (the "Agreement Date") by and between:

"Client"

Name: Lake Mallalieu Association
Address: 712 Riverside Drive N
Phone: 715-386-6173
Representative: Susie Gilbert, President Email: sgilbert712@sbcglobal.net

"Stantec"

Name: Stantec Consulting Services Inc.
Address: 733 Marquette Ave Suite 1000; Minneapolis, MN 55402
Phone: 612-712-2072
Representative: Dendy Lofton, PhD; Associate and Senior Project Manager Email: dendy.lofton@stantec.com

Project Name (the "Project"):

Lake Mallalieu Dredging Feasibility Study; St. Croix County, WI

DESCRIPTION OF WORK: Stantec shall render the services described in Attachment "A" (hereinafter called the "Services") in accordance with this Agreement. Stantec may, at its discretion and at any stage, engage subconsultants to perform all or any part of the Services. The Client and Stantec by written amendment to this Agreement may from time to time make changes to the Services. All changed work shall be carried out under this Agreement. The time for completion of the Services shall be adjusted accordingly.

COMPENSATION: Charges for the Services rendered will be made in accordance with the Contract Price indicated in Attachment "A", or, if no Contract Price is indicated, in accordance with Stantec's Schedule of Fees and Disbursements in effect from time to time as the Services are rendered.

Invoices shall be paid by the Client in the currency of the jurisdiction in which the Services are provided without deduction or setoff upon receipt. Failure to make any payment when due is a material breach of this Agreement and will entitle Stantec, at its option, to suspend or terminate this Agreement and the provision of the Services. Interest will accrue on accounts overdue by 30 days at the lesser of 1.5 percent per month (18 percent per annum) or the maximum legal rate of interest. The Client will make payment by Electronic Funds Transfer when requested by Stantec.

REPRESENTATIVES: Each party shall designate in the space provided above a representative who is authorized to act on behalf of that party and receive notices under this Agreement. Such representatives have complete authority to act on behalf of their principals in respect to all matters arising under this Agreement.

NOTICES: All notices, consents, and approvals required to be given hereunder shall be in writing and shall be given to the representatives of each party. All notices required by this Agreement to be given by either party shall be deemed to be properly given and received within two (2) business days if made in writing to the other party by certified mail or email, addressed to the regular business address or email address of such party as identified above.

CLIENT'S RESPONSIBILITIES: The Client shall provide to Stantec in writing, the Client's total requirements in connection with the Project, including the Project budget and time constraints. The Client shall make available to Stantec all relevant information or data pertinent to the Project which is required by Stantec to perform the Services. Stantec shall be entitled to rely upon the accuracy and completeness of all information and data furnished by the Client, including information and data originating with other consultants employed by the Client whether such consultants are engaged at the request of Stantec or otherwise. Where such information or data originates either with the Client or its consultants then Stantec shall not be responsible to the Client for the consequences of any error or omission contained therein.

When required by Stantec, the Client shall engage specialist consultants directly to perform items of work necessary to enable Stantec to carry out the Services. Whether arranged by the Client or Stantec, these services shall be deemed to be provided under direct contracts to the Client unless expressly provided otherwise.

The Client shall give prompt consideration to all documentation related to the Project prepared by Stantec and whenever prompt action is necessary shall inform Stantec of Client's decisions in such reasonable time so as not to delay the schedule for providing the Services.

When applicable, the Client shall arrange and make provision for Stantec's entry to the Project site as well as other public and private property as necessary for Stantec to perform the Services. The Client shall obtain any required approvals,

licenses and permits from governmental or other authorities having jurisdiction over the Project so as not to delay Stantec in the performance of the Services.

STANTEC'S RESPONSIBILITIES: Stantec shall furnish the necessary qualified personnel to provide the Services. Stantec represents that it has access to the experience and capability necessary to and agrees to perform the Services with the reasonable skill and diligence required by customarily accepted professional practices and procedures normally provided in the performance of the Services at the time when and the location in which the Services were performed. This undertaking does not imply or guarantee a perfect Project and in the event of failure or partial failure of the product or the Services, Stantec will be liable only for its failure to exercise diligence, reasonable care, and professional skill. This standard of care is the sole and exclusive standard of care that will be applied to measure Stantec's performance. There are no other representations or warranties expressed or implied made by Stantec. In particular, but not by way of limitation, no implied warranty of merchantability or fitness for a particular purpose shall apply to the Services provided by Stantec nor shall Stantec warrant or guarantee economic, market or financial conditions, proforma projections, schedules for public agency approvals, or other factors beyond Stantec's reasonable control. Stantec does not warrant the Services to any third party.

In performing the Services under this Agreement, Stantec shall operate as and have the status of an independent contractor and shall not act as or be an employee of the Client.

TERMINATION: Stantec or the Client may terminate this Agreement without cause upon thirty (30) days' notice in writing. If either party breaches this Agreement, the non-defaulting party may terminate this Agreement after giving seven (7) days' notice to remedy the breach. On termination of this Agreement, the Client shall forthwith pay Stantec for the Services performed to the date of termination. Non-payment by the Client of Stantec's invoices within 30 days of Stantec rendering same is agreed to constitute a material breach of this Agreement and, upon written notice as prescribed above, the duties, obligations, and responsibilities of Stantec are terminated.

SUSPENSION OF SERVICES: Other than with respect to project suspension caused by Stantec, if the project is suspended for more than thirty (30) calendar days in the aggregate, Stantec shall be compensated for services performed and charges incurred prior to receipt of notice to suspend and, upon resumption, an equitable adjustment in fees to accommodate the resulting demobilization and remobilization costs. In addition, there shall be an equitable adjustment in the project schedule based on the delay caused by the suspension. Other than with respect to project suspension caused by Stantec, if the Project is suspended for more than ninety (90) days, Stantec may, at its option, terminate this agreement upon giving notice in writing to the Client.

ENVIRONMENTAL: Except as specifically described in this Agreement, Stantec's field investigation, laboratory testing and engineering recommendations will not address or evaluate pollution of soil or pollution of groundwater.

Where the Services include storm water pollution prevention (SWPP), sedimentation or erosion control plans, specifications, procedures or related construction observation or administrative field functions, Client acknowledges that such Services proposed or performed by Stantec are not guaranteed to provide complete SWPP, sedimentation or erosion control, capture all run off or siltation, that any physical works are to be constructed and maintained by the Client's contractor or others and that Stantec has no control over the ultimate effectiveness of any such works or procedures.

In the prosecution of work, Stantec will take reasonable precautions to avoid damage to subterranean structures or utilities. However, it is the responsibility of the Client, upon request by Stantec, to provide Stantec with assistance in locating underground structures and utilities in the vicinity of any construction, exploration, or investigation. Stantec shall also rely upon third party sources in order to determine the existence and location of any underground structures and utilities of any kind. The Client acknowledges and agrees that Stantec may rely on such third-party advice, so long as such third party is, in Stantec's opinion, a reasonable source for such information, without any requirement that Stantec shall make an independent evaluation or investigation of such underground structures and utilities. In the event that the information supplied by third parties is incorrect, the Client acknowledges that Stantec shall not be responsible to the Client for any damages done to any such underground structures or utilities.

BUILDING CODES, BYLAWS AND OTHER PUBLIC REGULATIONS: Stantec shall, to the best of its ability, interpret building codes, by-laws, and other public regulations as they apply to the Project and as they are published at the time Services commence. Furthermore, Stantec shall observe and comply with all applicable laws, ordinances, codes, and regulations of government agencies, including federal, state, provincial, municipal, and local governing bodies having jurisdiction over the conduct of the Services ("LAWS"). However, it is expressly acknowledged and agreed by the Client that as the

Project progresses such building codes, by-laws, other public regulations, and LAWS may change or the interpretation of any public authority may differ from the interpretation of Stantec, through no fault of Stantec, and any extra costs necessary to conform to such changes or interpretations during or after execution of the Services will be paid by the Client.

Stantec shall continue to provide equal employment opportunity to all qualified persons and to recruit, hire, train, promote and compensate persons in all jobs without regard to race, color, religion, sex, age, disability or national origin or any other basis prohibited by applicable laws.

COST AND SCHEDULE OF CONSTRUCTION WORK: In providing opinions of probable cost and project schedule, it is recognized that neither the Client nor Stantec has control over the costs of labor, equipment, or materials, or over the Contractor's methods of determining prices or time. The opinions of probable cost or project duration are based on Stantec's reasonable professional judgment and experience and do not constitute a warranty, express or implied, that the Contractors' bids, project schedules, or the negotiated price of the Work or schedule will not vary from the Client's budget or schedule or from any opinion of probable cost or project schedule prepared by Stantec. Exact costs and times will be determined only when bids have been received for the Project and when the construction work has been performed and payments finalized.

ADMINISTRATION OF CONSTRUCTION CONTRACTS: When applicable, Stantec shall provide field services during the construction of the Project only to the extent that such Services are included and defined in this Agreement. The performance of any construction contract is not Stantec's responsibility nor are Stantec's field services rendered for the construction contractor's benefit.

It is understood and agreed by the Client and Stantec that only work which has been seen during an examination by Stantec can be said to have been appraised and comments on the balance of any construction work are assumptions only.

When field services are provided by Stantec, the authority for general administration of the Project shall reside with Stantec only to the extent defined in this Agreement. In such case, Stantec shall coordinate the activities of other consultants employed by the Client, only to the extent that Stantec is empowered to do so by such other consultants' contracts with the Client.

Stantec shall not be responsible for any contractor's failure to carry out the work in accordance with the contract documents nor for the acts or omissions of any contractor, subcontractor, any of their agents or employees, or any other persons performing any of the work in connection with the Project. When field services are provided, no acceptance by Stantec of the work or services of a construction contractor or other consultants, whether express or implied, shall relieve such construction contractor or other consultants from their responsibilities to the Client for the proper performance of such work or services and further, Stantec shall not be responsible to the Client or to the construction contractor or to the other consultants for the means, methods, techniques, sequences, procedures and use of equipment of any nature whatsoever, whether reviewed by Stantec or not, which are employed by the construction contractor or the other consultants in executing, designing, or administering any phases of the Project, or for placing into operation any plant or equipment or for safety precautions and programs incidental thereto.

When field services are provided, Stantec will not be designated as the party responsible for the compliance by others on the construction work site with the purposes or requirements of applicable environmental, occupational health and safety, or similar legislation. The Client shall designate a responsible party, other than Stantec, for the coordination and performance of environmental, occupational health and safety activities on the construction work site as required by applicable legislation and associated regulations.

JOBSITE SAFETY: Neither the professional activities of Stantec, nor the presence of Stantec or its employees and subconsultants at a construction site, shall relieve the Client and any other entity of their obligations, duties and responsibilities with respect to job site safety. Subject only to applicable legislation, Stantec and its personnel have no authority to exercise any control over any construction contractor or other entity or their employees in connection with their work or any health or safety precautions.

INDEMNITY: The Client releases Stantec from any liability to the Client arising out of, or claimed to arise out of, the performance of the Services, excepting liability arising from the negligence or willful misconduct of Stantec.

LIMITATION OF LIABILITY: It is agreed that, to the fullest extent possible under the applicable law, the total amount of all claims (including any and all costs associated with such claims such as attorney and expert fees and interest) the Client may have against Stantec under this Agreement or arising from the performance or non-performance of the Services under any theory of law, including but not limited to claims for negligence, negligent misrepresentation and breach of contract, shall be strictly limited to the lesser of the fees paid to Stantec for the Services or \$500,000.

No claim may be brought by either party against the other party in contract or tort more than two (2) years after the cause of action arose. As the party's sole

and exclusive remedy under this Agreement any claim, demand or suit shall be directed and/or asserted only against the other party and not against any of the party's employees, officers, or directors.

a party's liability with respect to any claims directed or asserted by the other party arising out of this Agreement shall be absolutely limited to direct damages arising out of the Services and the other party shall bear no liability whatsoever for any consequential loss, injury or damage incurred by the complaining party, including but not limited to claims for loss of use, loss of profits and loss of markets.

In no event shall a party's obligation to pay damages of any kind exceed its proportionate share of liability for causing such damages.

DOCUMENTS: All documents prepared by Stantec or on behalf of Stantec in connection with the Project are instruments of service for the execution of the Project. Stantec retains the property and copyright in these documents, whether the Project is executed or not. Payment to Stantec of the compensation prescribed in this Agreement shall be a condition precedent to the Client's right to use documentation prepared by Stantec. These documents may not be used for any other purpose without the prior written agreement of Stantec. The Client shall have a permanent non-exclusive, royalty-free license to use any concept, product or process which is patentable or capable of trademark, produced by or resulting from the Services rendered by Stantec in connection with the Project, for the life of the Project. The Client shall not use, infringe upon, or appropriate such concepts, products or processes without the express written agreement of Stantec. In the event Stantec's documents are subsequently reused or modified in any material respect by the Client directly or as a result of the actions or omissions of the Client without the prior consent of Stantec, the Client agrees to indemnify Stantec from any claims advanced on account of said reuse or modification.

Any document produced by Stantec in relation to the Services is intended for the sole use of Client. The documents may not be relied upon by any other party without the express written consent of Stantec, which may be withheld at Stantec's discretion. Any such consent will provide no greater rights to the third party than those held by the Client under the contract and will only be authorized pursuant to the conditions of Stantec's standard form reliance letter.

Stantec cannot guarantee the authenticity, integrity or completeness of data files supplied by Stantec in electronic format ("Electronic Files"). Electronic files will not contain stamps or seals, remain the property of Stantec, are not to be used for any purpose other than that for which they were transmitted, and are not to be retransmitted to a third party without Stantec's written consent.

PROJECT PROMOTION: Where the Client has control or influence over construction signage, press releases and/or other promotional information identifying the project ("Project Promotion"), the Client agrees to include Stantec in such Project Promotion.

FORCE MAJEURE: Any default in the performance of this Agreement caused by any of the following events and without fault or negligence on the part of the defaulting party shall not constitute a breach of contract: labor strikes, riots, war, acts of governmental authorities, unusually severe weather conditions or other natural catastrophe, disease, epidemic or pandemic, or any other cause beyond the reasonable control or contemplation of either party. Nothing herein relieves the Client of its obligation to pay Stantec for services rendered.

GOVERNING LAW: This Agreement shall be governed, construed, and enforced in accordance with the laws of the State of Wisconsin.

DISPUTE RESOLUTION: If requested in writing by either the Client or Stantec, the Client and Stantec shall attempt to resolve any dispute between them arising out of or in connection with this Agreement by entering into structured non-binding negotiations with the assistance of a mediator on a without prejudice basis. The mediator shall be appointed by agreement of the parties. The Parties agree that any actions under this Agreement will be brought in the Circuit Court for St. Corix County, Wisconsin, or elsewhere by mutual agreement. Nothing herein however prevents Stantec from exercising statutory lien rights or remedies in accordance with legislation where the project site is located.

ASSIGNMENT AND SUCCESSORS: The parties shall not, without the prior written consent of the other party, assign the benefit or in any way transfer the obligations of this Agreement or any part hereof. This Agreement shall inure to the benefit of and be binding upon the parties hereto, and except as otherwise provided herein, upon their executors, administrators, successors, and assigns.

PROTECTION OF PRIVACY LAWS: The parties acknowledge that information relating to an identified or identifiable person ("Personal Information") may be exchanged in the course of this Project pursuant to this Agreement.

The party disclosing Personal Information (the "Disclosing Party") warrants that it has all necessary authorizations and approvals required to process and disclose the Personal Information and to enable the party receiving the Personal Information (the "Receiving Party") to process it in performing the Services. The Disclosing Party will provide the Receiving Party with written notice containing the details of what Personal Information will be provided.

The Receiving Party will comply with any reasonable instruction from the Disclosing Party in respect of such Personal Information and implement appropriate technical and organization measures to protect the Personal Information against unauthorized or unlawful processing and accidental loss, theft, use, disclosure, destruction and/or damage.

The Receiving Party shall be permitted, upon prior written consent of the Disclosing Party, to transfer Personal Information outside the jurisdiction if required for performance of the Services provided that such transfers are in accordance with relevant and applicable requirements under applicable legislation. The Receiving Party shall provide the Disclosing Party with full cooperation and assistance in meeting its obligations under applicable privacy legislation, including in relation to the security of processing, the notification of Personal Information breaches, the notification of requests from individuals and Personal Information protection impact assessments.

On termination of this Agreement, the Receiving Party shall cease processing Personal Information and shall delete and destruct or return to the Disclosing Party (as the Disclosing Party may require) all Personal Information held or processed by the Receiving Party on the Disclosing Party's behalf. It is understood however, that the Receiving Party may need to keep a copy of all Personal Information for legal purposes and therefore it will continue to take reasonable steps to protect the Personal Information as outlined herein and will proceed with the destruction of the Personal Information within a reasonable period of time if there is no longer any legal justification to keep the Personal Information.

Nothing herein relieves either party from their responsibilities for compliance with applicable privacy legislation.

ENTIRE AGREEMENT: This Agreement constitutes the sole and entire agreement between the Client and Stantec relating to the Project and supersedes all prior agreements between them, whether written or oral respecting the subject matter hereof and no other terms, conditions, or warranties, whether express or implied, shall form a part hereof. This Agreement may be amended only by written instrument signed by both the Client and Stantec. All attachments referred to in this Agreement are incorporated herein by this reference; however, in the event of any conflict between attachments and the terms and conditions of this Agreement, the terms and conditions of this Agreement shall take precedence.

SEVERABILITY: If any term, condition, or covenant of this Agreement is held by a court of competent jurisdiction to be invalid, void, or unenforceable, the remaining provisions of this Agreement shall be binding on the Client and Stantec.

CONTRA PROFERENTEM: The parties agree that in the event this Agreement is subject to interpretation or construction by a third party, such third party shall not construe this Agreement or any part of it against either party as the drafter of this Agreement.

BUSINESS PRACTICES: Each Party shall comply with all applicable laws, contractual requirements and mandatory or best practice guidance regarding improper or illegal payments, gifts or gratuities, and will not pay, promise to pay or authorize the payment of any money or anything of value, directly or indirectly, to any person (whether a government official or private individual) or entity for the purpose or illegally or improperly inducing a decision or obtaining or retaining business in connection with this Agreement or the Services.

THE PARTIES EXPRESSLY ACKNOWLEDGE THAT THIS AGREEMENT CONTAINS LIMITATION OF LIABILITY PROVISIONS RESTRICTING RIGHTS FOR THE RECOVERY OF DAMAGES.

The Parties, intending to be legally bound, have made, accepted, and executed this Agreement as of the Agreement Date noted above.

Lake Mallalieu Association

Susie Gilbert; President
Print Name and Title

Signature *Susan Gilbert*

Print Name and Title

Signature _____

Stantec Consulting Services Inc.

Dendy Lofton, PhD; Associate
Print Name and Title

Signature _____

John Wiater; Senior Associate
Print Name and Title

Signature _____

Attached to and forming part of the Agreement BETWEEN:

Lake Mallalieu Association
(Hereinafter called the "Client")
- and -
Stantec Consulting Services Inc.
(Hereinafter called "Stantec")

EFFECTIVE: October 3, 2023

This Attachment details the Services, Contract Time, Contract Price, Additional Conditions and Additional Attachments forming part of the above-described Agreement.

SERVICES: Stantec shall perform the following Services:

The Dredging Feasibility Study ("Study") as described in *SCOPE OF WORK FOR ENVIRONMENTAL CONSULTING SERVICES LAKE MALLALIEU DREDGING FEASIBILITY STUDY ST. CROIX COUNTY, WISCONSIN* dated October 3, 2023 and attached hereto as Exhibit A (Hereinafter called the "Services")

CONTRACT TIME: Commencement Date: October 3, 2023
Estimated Completion Date: December 31, 2024

CONTRACT PRICE: Subject to the terms below, Client will compensate Stantec as follows:

Project specific charges, such as subconsultants; travel, accommodations, and meals; project-specific printing of deliverables; consumables; usage charges for specialized field equipment and company-owned, leased, or rented project vehicles; external testing lab charges and other external services charges; specialized computer software costs; and other significant project-specific expenses will be invoiced in addition to labor fees.

Where not stated as being included in the fees, project specific subconsultant, contractor, lab and other similar third-party charges will be charged as invoiced to Stantec with a ten percent (10%) markup.

Unless otherwise noted, the fees in this agreement do not include any value added, sales, or other taxes that may be applied by Government on fees for services. Such taxes will be added to all invoices as required.

Where the Services or services conditions change, Stantec shall submit to the Client in a timely manner, documentation of the revisions to Attachment "A" adjusting the Contract Services Time and Price as required.

Unless otherwise specified, charges for Services are based on Stantec's hourly billing rate table ("Rate Table"), attached hereto. The Rate Table is subject to escalation from time to time. At a minimum, effective each January 1 during the term of this Agreement, Stantec's charges for Services shall escalate by either (a) the most current Consumer Price Index year over year percentage increase, not seasonally adjusted, for the preceding July, all items, as published by Statistics Canada (for Projects in Canada) plus 1.0%, or (b) the most current Consumer Price



PROFESSIONAL SERVICES AGREEMENT ATTACHMENT "A"

Index for All Urban Consumers (CPI-U) year over year percentage increase, not seasonally adjusted, for the preceding July, as published by the U.S. Bureau of Labor Statistics plus 1.0% (for all other projects).

ADDITIONAL
CONDITIONS:

The following additional conditions shall be read in conjunction with and constitute part of this Agreement:

No additional conditions or similar wording.

COVID-19: The parties acknowledge the ongoing COVID-19 pandemic and agree that the CONTRACT PRICE and CONTRACT TIME are based on what is currently understood. Where conditions change, the parties may have further discussions to manage and mitigate the impact of this evolving situation on the Project.

ADDITIONAL
ATTACHMENTS:

The following additional attachments shall be read in conjunction with and constitute part of this Agreement:

Rate Table

INSURANCE
REQUIREMENTS:

Before any services are provided under this agreement, Stantec shall procure, and maintain insurance coverage during the term of this agreement.

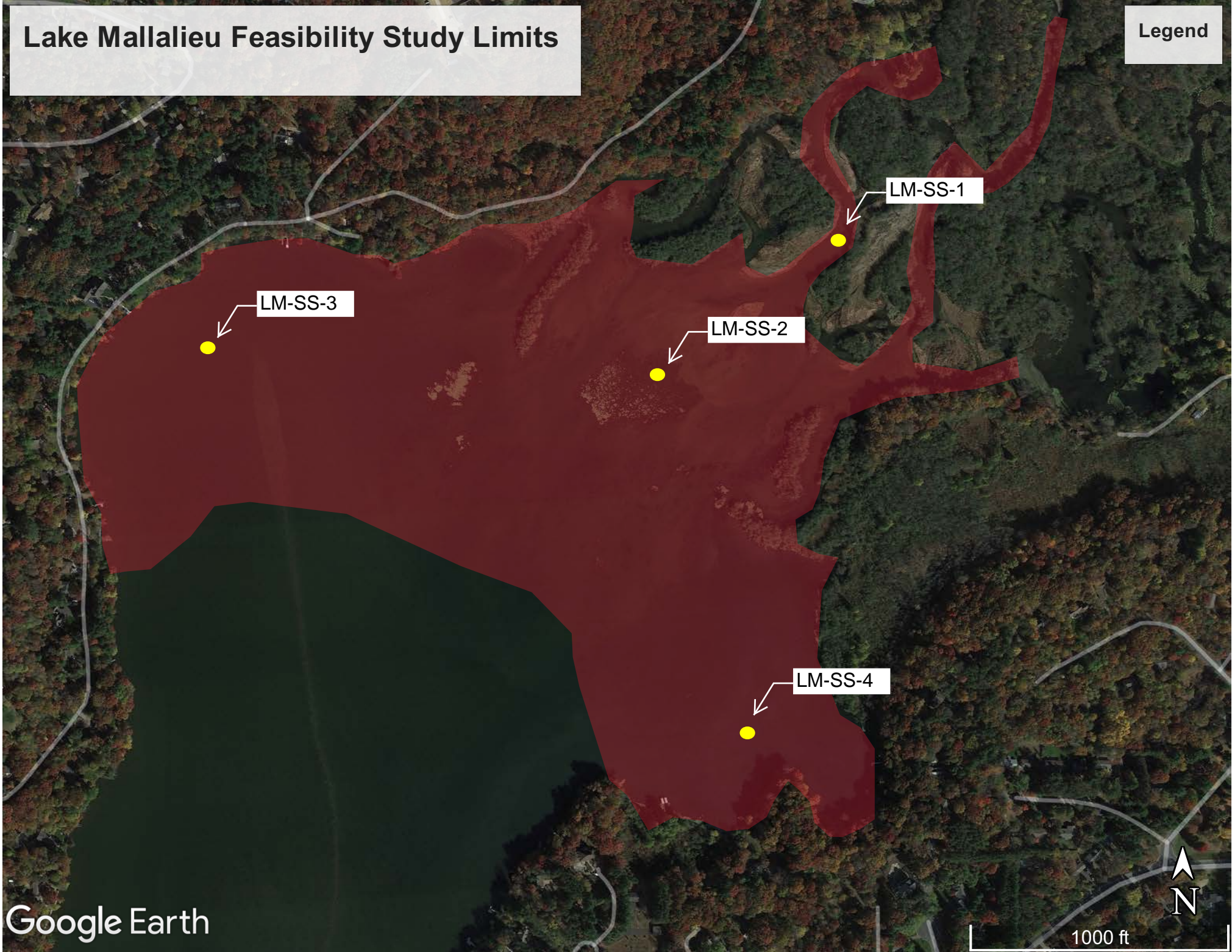
**PROFESSIONAL SERVICES AGREEMENT
ATTACHMENT "A"**

EXHIBIT A

PROPOSAL 951958 FOR ENVIRONMENTAL CONSULTING SERVICES LAKE MALLALIEU DREDGING
FEASIBILITY STUDY ST. CROIX COUNTY, WISCONSIN dated October 3, 2023

Lake Mallalieu Feasibility Study Limits

Legend

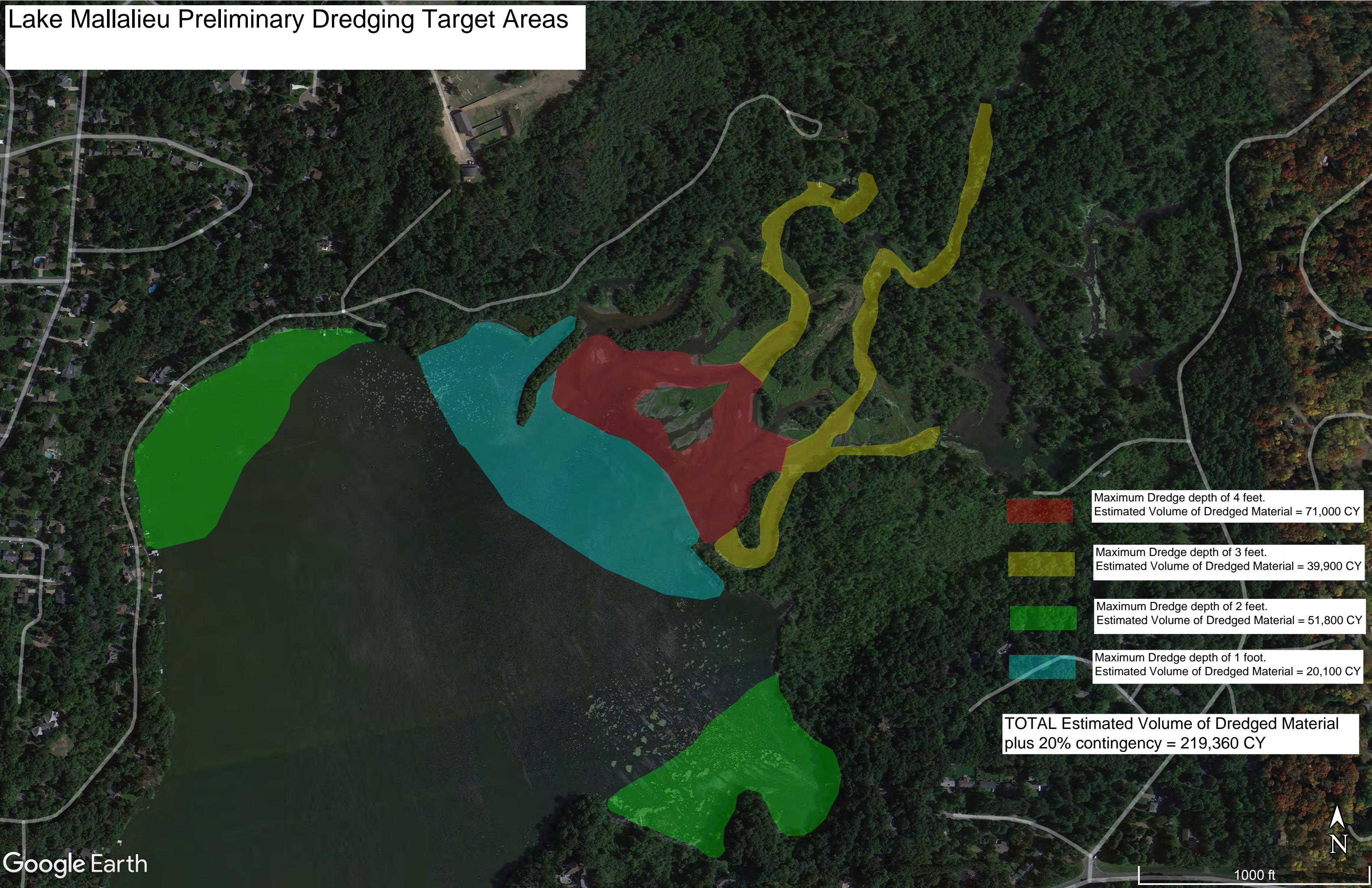


Google Earth

1000 ft



Lake Mallalieu Preliminary Dredging Target Areas





ATTACHMENT – STANDARD RATE TABLE

BC2277_2023-1

HOURLY RATES

Stantec Billing Level	2023 Hourly Rate*
3	\$104
4	\$117
5	\$127
6	\$131
7	\$139
8	\$145
9	\$155
10	\$161
11	\$172
12	\$178
13	\$187
14	\$195
15	\$220
16	\$250
17	\$259
18	\$265
19	\$273
20	\$285
21	\$296

*Rates subject to annual increase.

OTHER EXPENSES / MATERIALS

Stantec's standard mark-up on expenses is 10%. Unless prescribed differently within the proposal or other contract paperwork, this mark-up is used in all areas as indicated below:

- **Sub-Consultants**
- **Subcontracted Commodity Services**
e.g., analytical laboratory services, drilling contractors, etc.
- **Meals**
May be billed at cost or daily per diem.
- **Lodging**
- **Mileage**
Stantec uses the U.S. Internal Revenue Service standard mileage rate.
- **External Equipment and Supplies.**
e.g., delivery charges, outside copying/reproduction, leased/rented field equipment, etc.

Company-owned equipment will be billed on unit rate basis (e.g., daily; weekly); the expense markup does not apply to these rates. A separate Stantec Equipment Rate Schedule* is available upon request. If applicable, per diem rates will be those set by the U.S. General Services Administration (<https://www.gsa.gov>), unless prescribed differently in the proposal or contract terms and conditions.