



VINYL FENCING & RAILING


ALUMINUM FENCING & RAILING

LED LIGHTING

**weatherables®**

# WORTH THE WEIGHT!

## A letter from the president:

When I first started in the vinyl fencing industry over 25 years ago, it was nearly impossible to tell one vinyl fence from the next. However, like everything else over the years, others have gone to great lengths to make their products cheaper, primarily by using less vinyl. In turn, making the material thinner. At Weatherables, we still manufacture the same high quality, made in the USA, heavy duty vinyl fencing and railing that we did 25 years ago. In fact, our products can be up to 50% heavier/thicker than the competition. When comparing the quality and durability of vinyl fencing, it's important to consider panel weight. Thicker material means a heavier, stronger product. Simply look for the  symbol throughout this brochure to compare the weight of any other panel on the market to one of our panels and you'll immediately see the Weatherables difference.

At Weatherables®, the only thing stronger than our products is the service that comes with them.™. We believe that Great Experiences Matter, we want every step from the first call to the completion of your projects to be a great experience. We made a decision a long time ago to stand by our values and only offer strong, durable products that are guaranteed to last. We back that guarantee up with our limited ifetime warranty and product support.

Sincerely,



Brad Halley  
President

**THICKER VINYL =  HEAVIER WEIGHT = SUPERIOR DURABILITY**

Vinyl available in White, Tan, Khaki, Gray, Coastal\* or Cedar \*



Aluminum Fencing available in Black



Aluminum Railing available in Textured White or Textured Black



\* Indicates our WeatherGrain fencing



# Fencing and railing that's built to last

- All vinyl fencing and railing made in the USA
- Unique customization available
- High impact resistant
- Low maintenance
- Thick, heavy-duty vinyl
- Won't chip, rot or crack
- Lifetime implementation support
- Limited Lifetime Warranty

**WE STAND BEHIND  
EVERYTHING WE  
MAKE, AND WE'LL  
BE HERE FOR YOU  
BEFORE, DURING  
AND AFTER YOUR  
PURCHASE.**



# WE TAKE PRIDE IN MANUFACTURING PREMIUM QUALITY FENCING AND RAILING THAT ARE ENVIRONMENTALLY FRIENDLY



Manufactured from  
PVC, 100% BPA free



Made from 85%  
recycled material



Extruded with a  
closed loop water  
system

By using recycled materials, we have kept more than  
50 million pounds of plastic out of landfills.  
Enough to put a Weatherables picket fence from  
Portland, Maine to Los Angeles, California.





# Weatherables WeatherGrain

Introducing the latest addition to Weatherables: WeatherGrain vinyl fencing and railing. Combining the look of wood with the durability and strength of vinyl, this product is now available in two stunning options – Coastal and Cedar. Elevate any outdoor space with this classic touch. Crafted with the same quality Weatherables vinyl, this fencing solution ensures both style and resilience. Easy to maintain, you'll never need to paint, stain or seal; just spray with water to clean.

## Coastal



### Available Styles:

Savannah, Bradford, 2-Rail, 3-Rail & 4-Rail Horse Fence, Bedford Railing

## Cedar



### Available Styles:

Augusta, Bradford, Ashton, 2-Rail, 3-Rail & 4-Rail Horse Fence, Bedford Railing





# Privacy Fencing

The perfect backdrop to lush garden plants or lively backyard parties, our privacy fencing offers both seclusion and sophistication. Providing maximum privacy and requiring minimal maintenance, we offer a wide variety of styles from traditional to contemporary to complement virtually any architectural style. To ensure superior strength and durability, the bottom rail is reinforced with aluminum.

***All of our privacy fences 6 feet tall and below can be installed to withstand wind gusts of up to 130 mph.***

## Premium

Our Weatherables Premium style privacy fences feature a 6" picket with .060" tongue and groove



### The Savannah®

Height: 4', 5' & 6'  
Width: 6' & 8'  
Picket Style: 7/8" x 6"  
Tongue & Groove .060"  
Color:      
 

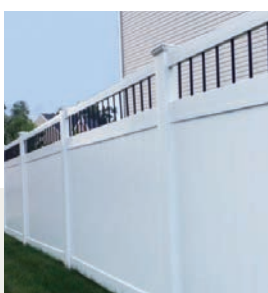
65 lb<sup>1</sup>



### The Ashton™

Height: 5', 6', 7' & 8'  
Width: 6' & 8'  
Picket Style: 7/8" x 6"  
Tongue & Groove .060"  
Color:      
 

65 lb<sup>1</sup>




### The Bradford™

Height: 5', 6', 7' & 8'  
Width: 6' & 8'  
Picket Style: 7/8" x 6"  
Tongue & Groove .060"  
(accents 3/4" round black aluminum)  
Color:      
 

64 lb<sup>1</sup>



### The Scottsdale™

Height: 5', 6', 7' & 8'  
Width: 6' & 8'  
Picket Style: 7/8" x 6"  
Tongue & Groove .060"  
(accents 1.25" x 1.25")  
Color: 

70 lb<sup>1</sup>



### The Mason®

Height: 5', 6', 7' & 8'  
Width: 6' & 8'  
Picket Style: 7/8" x 6"  
Tongue & Groove .060"  
(accents 7/8" x 1.5")  
Color:   

65 lb<sup>1</sup>



### The Augusta™

Height: 6', 7' & 8'  
Width: 6' & 8'  
Picket Style: 7/8" x 6"  
Tongue & Groove .060"  
Color:      
 

77 lb<sup>1</sup>



### The Halifax®

Height: 5', 6', 7' & 8'  
Width: 6' & 8'  
Picket Style: 7/8" x 6"  
Tongue & Groove .060"  
(accents 7/8" x 1.5")  
Color:   

72 lb<sup>1</sup>

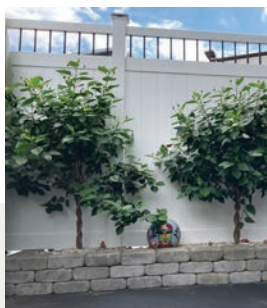
<sup>1</sup> Average weight noted is for a 6'x8' panel.

6 Color Options: White:  Tan:  Khaki:  Gray:  White/Tan:  Coastal:  Cedar: 



## Classic

Our Weatherables Classic style privacy fences feature a wide-board 11.3" picket with .055" tongue and groove.



### The Pembroke™

Height: 4', 5', 6', 7', 8'  
Width: 6' & 8'  
Picket Style: 7/8" x 11.3"  
Tongue & Groove .055"  
Color: ☐



### The Glenshire™

Height: 5', 6', 7', 8'  
Width: 6' & 8'  
Picket Style: 7/8" x 11.3"  
Tongue & Groove .055"  
Color: ☐



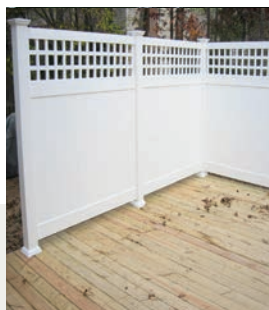
### The Tuscany™

Height: 6', 7', 8'  
Width: 6' & 8'  
Picket Style: 7/8" x 11.3"  
Tongue & Groove .055"  
(accents 3/4" round black aluminum)  
Color: ☐



### The Dora™

Height: 6', 7', 8'  
Width: 6' & 8'  
Picket Style: 7/8" x 11.3"  
Tongue & Groove .055"  
(accents 7/8" x 1.5")  
Color: ☐



### The Calgary™

Height: 6', 7', 8'  
Width: 6' & 8'  
Picket Style: 7/8" x 11.3"  
Tongue & Groove .055"  
(accents 7/8" x 1.5")  
Color: ☐



### The Gideon™

Height: 6', 7', 8'  
Width: 6' & 8'  
Picket Style: 7/8" x 11.3"  
Tongue & Groove .055"  
(accents 1.25" x 1.25")  
Color: ☐





# Pool Fencing

Surround your patio, pool or lawn with one of our eye-catching pool fences. These attractive designs add a sense of style to any landscape. While perfect around pools, our pool fencing also looks great in any area of your yard. Our exclusive manufacturing process ensures that all of our vinyl products are resistant to water and humidity for lasting beauty. Our pool style gates include self-closing hinges and a pool safety latch. Plus, the bottom rail is reinforced with aluminum to ensure superior strength.

A beautiful finish that always looks new and resists water and humidity.



## The Captiva™

Height: 4' & 5'(w/ Mid-Rail)  
Width: 6' & 8'  
Picket Style: 7/8" x 3"  
(3.7" picket spacing)  
Color: ☐ ☐ ☐

33 lb<sup>1</sup>



## The Neptune™

Height: 4' & 5'(w/ Mid-Rail)  
Width: 6' & 8'  
Picket Style: 7/8" x 1.5"  
(3.7" picket spacing)  
Color: ☐ ☐ ☐

28 lb<sup>1</sup>



## The Crestview™

Height: 4' & 5'(w/ Mid-Rail)  
Width: 6' & 8'  
Picket Style: 7/8" x 3"  
(1.7" picket spacing)  
Color: ☐ ☐ ☐

40 lb<sup>1</sup>



## The Williamsport™

Height: 4' & 5'(w/ Mid-Rail)  
Width: 6' & 8'  
Picket Style: 7/8" x 1.5"  
(1.7" picket spacing)  
Color: ☐ ☐ ☐

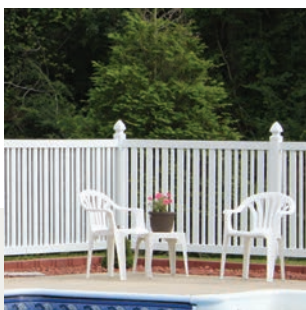
36 lb<sup>1</sup>



## The Atlantis™

Height: 4' & 5'(w/ Mid-Rail)  
Width: 6' & 8'  
Picket Style: 7/8" x 3" &  
7/8" x 1.5" alternating  
(3.7" picket spacing)  
Color: ☐ ☐ ☐

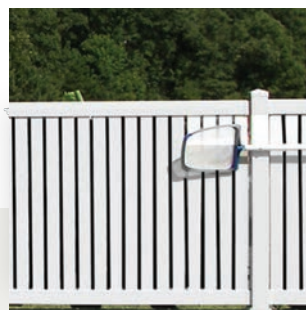
31 lb<sup>1</sup>



## The Sarasota™

Height: 4' & 5'(w/ Mid-Rail)  
Width: 6' & 8'  
Picket Style: 7/8" x 3" &  
7/8" x 1.5" alternating  
(1.7" picket spacing)  
Color: ☐ ☐ ☐

39 lb<sup>1</sup>



## The Hanover™

Height: 4' & 5'(w/ Mid-Rail)  
Width: 6' & 8'  
Picket Style: 7/8" x 3"  
(0.6" picket spacing)  
Color: ☐ ☐ ☐

48 lb<sup>1</sup>





# Semi-Privacy Fencing

Our semi-privacy fencing offers just the right amount of seclusion for homeowners who want privacy without complete isolation. The pickets used in our semi-privacy fences slide through the routed rails for a true multi-dimensional look. The superior strength and durability of our fence are due in part to the fact that the bottom rail is reinforced with an aluminum insert.

Just the right amount of seclusion and style.



## The Huntington®

Height: 5' & 6'  
Width: 6' & 8'  
Picket Style: 7/8" x 3"  
(7/8" picket spacing)  
Color: ☐ ☐ ☐



## The Davenport®

Height: 5' & 6'  
Width: 6' & 8'  
Picket Style: 7/8" x 3"  
& 7/8" x 1.5" alternating  
(7/8" picket spacing)  
Color: ☐ ☐ ☐



## The Glendale™

Height: 5' & 6'  
Width: 6' & 8'  
Picket Style: 7/8" x 6"  
(7/8" picket spacing)  
Color: ☐ ☐ ☐



## The Alden™

Height: 5' & 6'  
Width: 6' & 8'  
Picket Style: 7/8" x 3"  
& 7/8" x 6" alternating  
(7/8" picket spacing)  
Color: ☐ ☐ ☐



## The Everglade™

Height: 6'  
Width: 8'  
Picket Style: 7/8" x 3"  
horizontal  
(0.9" picket spacing)  
Color: ☐



## The Meridian™

Height: 5' & 6'  
Width: 6' & 8'  
Picket Style: 7/8" x 6"  
(7/8" picket spacing)  
Color: ☐ ☐ ☐



Color Options: White: ☐ Tan: ☐ Khaki: ☐

<sup>1</sup>Average weight noted is for a 6'x8' panel.



# Picket Fencing

Our classic picket fencing can dramatically change the look of your yard, adding beauty and warmth to the landscape. From simple straight-top to decorative scalloped-top designs, you'll find a wide selection of styles to suit your tastes. Plus, with a Weatherables® fence, you are assured years of durable performance and maintenance-free satisfaction.

A simple solution that adds ornamental style to your landscape.



## The Plymouth™

Height: 3', 4' & 5'  
Width: 6' & 8'  
Picket Style: 7/8" x 3"  
Picket Caps: Dogear or Spade (3" picket spacing)  
Bottom Rail: 1.5" x 5.5"  
Color: ☐ ☐ ☐

35 lb<sup>1</sup>



## The Hampshire™

Height: 3', 4' & 5'  
Width: 6' & 8'  
Picket Style: 7/8" x 3"  
Picket Caps: Dogear or Spade (3" picket spacing)  
Bottom Rail: 1.5" x 5.5"  
Color: ☐ ☐ ☐

35 lb<sup>1</sup>



## The Chelsea™

Height: 3', 4' & 5'  
Width: 6' & 8'  
Picket Style: 7/8" x 3"  
Picket Caps: Dogear or Spade (3" picket spacing)  
Bottom Rail: 2" x 3.5"  
Color: ☐ ☐ ☐

36 lb<sup>1</sup>



## The Ellington™

Height: 3', 4' & 5'  
Width: 6' & 8'  
Picket Style: 7/8" x 3"  
Picket Caps: Dogear or Spade (3" picket spacing)  
Bottom Rail: 2" x 3.5"  
Color: ☐ ☐ ☐

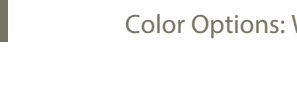
36 lb<sup>1</sup>



## The Provincetown™

Height: 3', 4' & 5'  
Width: 6' & 8'  
Picket Style: 7/8" x 3"  
Picket Caps: Dogear or Spade (1.7" picket spacing)  
Bottom Rail: 2" x 3.5"  
Color: ☐ ☐ ☐

41 lb<sup>1</sup>



## The Richmond™

Height: 3', 4' & 5'  
Width: 6' & 8'  
Picket Style: 7/8" x 3"  
Picket Caps: Dogear or Spade (1.7" picket spacing)  
Bottom Rail: 2" x 3.5"  
Color: ☐ ☐ ☐

41 lb<sup>1</sup>



## The Monterey™

Height: 3' & 4'  
Width: 6' & 8'  
Picket Style: 1.5" x 1.5"  
Picket Caps: Spade (2" picket spacing)  
Bottom Rail: 2" x 6"  
Color: ☐

45 lb<sup>1</sup>







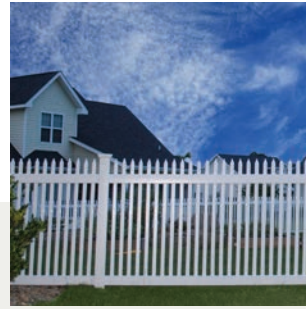
## The Abbington™

Height: 3', 4' & 5'  
 Width: 6' & 8'  
 Picket Style: 7/8" x 1.5"  
 Picket Caps: Spade  
 (3.7" picket spacing)  
 Bottom Rail: 2" x 3.5"  
 Color: ☐ ☐ ☐



## The Stratford™

Height: 3', 4' & 5'  
 Width: 6' & 8'  
 Picket Style: 7/8" x 1.5"  
 Picket Caps: Spade  
 (3.7" picket spacing)  
 Bottom Rail: 2" x 3.5"  
 Color: ☐ ☐ ☐



## The Hartford™

Height: 3', 4' & 5'  
 Width: 6' & 8'  
 Picket Style: 7/8" x 1.5"  
 Picket Caps: Spade  
 (1.7" picket spacing)  
 Bottom Rail: 2" x 3.5"  
 Color: ☐ ☐ ☐



## The Barrington™

Height: 3', 4' & 5'  
 Width: 6' & 8'  
 Picket Style: 7/8" x 1.5"  
 Picket Caps: Spade  
 (1.7" picket spacing)  
 Bottom Rail: 2" x 3.5"  
 Color: ☐ ☐ ☐



## The Classic™

Height: 3' & 4'  
 Width: 6' & 8'  
 Picket Style: 1.5" x 1.5"  
 Picket Caps: Spade  
 (2" picket spacing)  
 Bottom Rail: 2" x 6"  
 Color: ☐





# Horse Fencing

Our horse fencing provides a physical barrier that is visible and safe for horses and livestock. It defines property boundaries, adds value to your estate, is low maintenance and offers superior impact resistance. Choose from elegant styles of durable vinyl fencing paired with best-in-class customer service and lifetime implementation support.

Beautiful, durable and top-grade quality.



## 2 Rail

Post: 5" x 5" square post  
Post Length: 5' & 6'  
Rail Spacing: 11"  
Rail Size: 1.5" x 5.5"  
Color: ☐ ☐ ☐ ☐ ☐



## 3 Rail

Post: 5" x 5" square post  
Post Length: 6.5', 7' & 7.5'  
Rail Spacing: 11"  
Rail Size: 1.5" x 5.5"  
Color: ☐ ☐ ☐ ☐ ☐



## 4 Rail

Post: 5" x 5" square post  
Post Length: 7', 7.5' & 8'  
Rail Spacing: 9"  
Rail Size: 1.5" x 5.5"  
Color: ☐ ☐ ☐ ☐ ☐



## Cross Buck

Post: 5" x 5" square post  
Post Length: 7', 7.5' & 8'  
Rail Size: 1.5" x 5.5"  
Color: ☐ ☐ ☐



## 2-Rail Diamond Rail™

Post: 5" x 5" square post  
Post Length: 5' & 6'  
Rail Size: 3"x3"  
Rail Spacing: 11"  
Color: ☐  
(Matching gate unavailable)

## 3-Rail Diamond Rail™

Post: 5" x 5" square post  
Post Length: 5' & 6'  
Rail Size: 3"x3"  
Rail Spacing: 11"  
Color: ☐  
(Matching gate unavailable)

## Single Gate

Sizes: Up to 8' wide  
Hardware: Commercial grade stainless steel  
powder-coated black  
Color: ☐ ☐ ☐ ☐

## Double Gate

Sizes: Up to 16' wide, 2 gates, latch in the center  
Hardware: Commercial grade stainless steel powder-coated black; includes 2 drop rods  
Color: ☐ ☐ ☐ ☐ ☐ ☐

Gates are available in kit form to match Weatherables® Horse Fencing.





## Bottom Rail Reinforcement

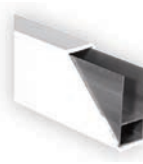
Providing superior strength and durability.

Most of our fence styles come with an metal insert in the bottom rail to ensure maximum strength and lasting durability.

### Bottom Rail Reinforcements



Metal  
“I” Channel



Metal  
“H” Channel



## Fence Gates

Blending optimal function and long-term performance.

You'll find matching gates for all of our fences that are designed with function and long-term performance in mind. We use the best gate hardware in the industry. Manufactured with rust-free, high-tech engineered polymer and stainless steel components, our gate locks, latches and hinges have a limited lifetime warranty.



Our gate post inserts add extra strength and stability to your gate to ensure years of uninterrupted gate operation.



# Vinyl Fence Posts

Strong, durable and maintenance-free.

Manufactured from the highest grade materials, our fence posts are the strongest, most durable, low maintenance fence posts you'll find anywhere.



## Blank Post

Post Width: 4" x 4" & 5" x 5"

Post Height: 72", 84", 96", 105", 120" & 140"

Color:      
 



## End Post

Post Width: 4" x 4" & 5" x 5"

Post Height: 72", 84", 96", 105", 120" & 140"

Color:      
 



## Line Post

Post Width: 4" x 4" & 5" x 5"

Post Height: 72", 84", 96", 105", 120" & 140"

Color:      
 



## Corner Post

Post Width: 4" x 4" & 5" x 5"

Post Height: 72", 84", 96", 105", 120" & 140"

Color:      
 



## 3-Way Post

Post Width: 4" x 4" & 5" x 5"

Post Height: 72", 84", 96", 105", 120" & 140"

Color:      
 



## Gate End Post

Post Width: 4" x 4" & 5" x 5"

Post Height: 72", 84", 96", 105", 120" & 140"

Color:        
(Metal insert included)



## Gate Blank Post

Post Width: 4" x 4" & 5" x 5"

Post Height: 72", 84", 96", 105", 120" & 140"

Color:        
(Metal insert included)



## Fast 2K

Size: 32.8 oz

FAST 2K is a more convenient alternative to concrete for setting fence posts.

Note: Posts are custom routed to match each specific style of fence.

For example, posts for the Augusta fence will have 3 route holes.

\*140" post is only available in 5"x 5" post size



# U-mounts

Custom installation made easy.

Available in: White, Tan or Khaki (unless noted) Replace the "X" in the product code with the selected color option:

White= W

Tan= T

Khaki= K

Gray= G



**1.5" x 5.5" U-mount**

AXBR-UMOUNT-1.5X5.5



**2" x 3.5" U-mount**

AXBR-UMOUNT-2X3.5



**2" x 6" U-mount**

AXBR-UMOUNT-2X6



Fasteners sold separately.

**1.5" x 5.5" External U-mount**

AXBR-UMOUNTTEXT-1.5X5.5

# Post Hole Covers

Providing a clean look to your finished project.



**1.5" x 5.5" Post Hole Cover**

AXCP-CVR-1.5X5.5



**2" x 3.5" Post Hole Cover**

AXCP-CVR-1.75X3.5



**Hinged Screw Cap**

AXCP-SCREWCAP

(fits a #10 pan head screw)

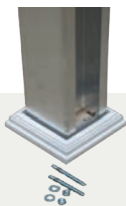


**Self Tapping Screw**

AMFA-SCREWTAP-1.0ss

# Mounts

Simplify your post installation.



**5" x 5" x 54" Concrete Mount**

AXPT-CMOUNT-5X54

(includes mounting hardware and post skirt)



**4" x 4" x 36" Concrete Mount**

AXPT-CMOUNT-4X36

(includes mounting hardware and post skirt- can extend to 42")

# WEATHERABLES<sup>®</sup> RAILING SYSTEMS: THE BEST CHOICE FOR STRENGTH AND DURABILITY

AVAILABLE IN A RANGE OF ATTRACTIVE COLORS

EASY TO MAINTAIN

FULLY CUSTOMIZABLE

IMPACT- AND WEATHER-RESISTANT

CODE COMPLIANT

**FREE SHIPPING**

A MINIMUM ORDER APPLIES



# Classic Vinyl Railing

The best choice for strong & durable railing.



## The Greenwich™

Color: ☐ ☐ ☐

Rail: 2" x 3.5" top & bottom rail

Railing Height: 36" & 42" (bottom rail 2" from the ground)

Spindle Style: .875" x 1.5" Rectangular Spindle

Length: 4', 6' & 8' straight; 6' & 8' stair

Metal Inserts:

Top Rail Insert – included

Bottom Rail Insert – optional

Stair Rail–Top Rail Insert – included

Bottom Rail Insert – optional

IRC<sup>1</sup>

Brackets Included

## The Yorkshire™

Color: ☐ ☐ ☐

Rail: T-Rail top rail & 2" x 3.5" bottom rail

Railing Height: 36" & 42" (bottom rail 2" from the ground)

Spindle Style: .875" x 1.5" Rectangular Spindle

Length: 4', 6' & 8' straight; 6' & 8' stair

Metal Inserts:

Top Rail Insert – included

Bottom Rail Insert – optional

Stair Rail–Top Rail Insert – included

Bottom Rail Insert – optional

IRC<sup>1</sup>

Brackets Included



## The Bolton

Color: ☐ ☐ ☐

Rail: T-Rail top rail & 2" x 3.5" bottom rail

Railing Height: 36" & 42" (bottom rail 2" from the ground)

Spindle Style: .75" Black Round Aluminum

Rail Length: 4', 6' & 8'

Stair Rail Length: 6' & 8'

Metal Inserts:

Top Rail Insert – included

Bottom Rail Insert – included

Stair Rail–Top Rail Insert – included

Bottom Rail Insert – included

IRC<sup>1</sup>

Brackets Included

<sup>1</sup>The brackets included with the classic stair railing are designed for angles of 28° to 42°.

Color Options: White: ☐ Tan: ☐ Khaki: ☐

<sup>1</sup>Railing height noted is the installed height.

# Premium Vinyl Railing

Attractive designs manufactured from the highest quality vinyl, up to 50% stronger than other brands.



## The Berkshire™ Railing

Color: ☐ ☐ ☐

Rail: 2" x 3.5" top & bottom rail

Railing Height: 36" & 42" (bottom rail 2" from the ground)

Spindle Style: 1.5" Square Spindle

Length: 4', 6' & 8' straight; 6' & 8' stair

Aluminum Inserts:

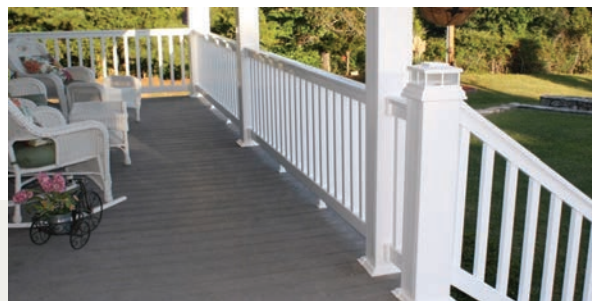
Top Rail Insert—included

Bottom Rail Insert—optional

Stair Rail—top & bottom rail inserts are included

IRC<sup>1</sup> & IBC<sup>1</sup>

Brackets Included



## The Washington™ Railing

Color: ☐ ☐ ☐

Rail: T-Rail top rail & 2" x 3.5" bottom rail

Railing Height: 36" & 42" (bottom rail 2" from the ground)

Spindle Style: 1.5" Square Spindle

Length: 4', 6', 8' & 10' straight; 6' & 8' stair

Aluminum Inserts:

Top Rail Insert—included

Bottom Rail Insert—optional

Stair Rail—top & bottom rail inserts are included

IRC<sup>1</sup> & IBC<sup>1</sup>

Brackets Included



## The Burlington™ Railing

Color: ☐

Rail: 2" x 3.5" top & bottom rail

Railing Height: 36" & 42" (bottom rail 2" from the ground)

Spindle Style: 1.5" Colonial Spindle

Length: 4', 6' & 8' straight; 6' & 8' stair

Aluminum Inserts:

Top Rail Insert—included

Bottom Rail Insert—optional

Stair Rail—top & bottom rail inserts are included

IRC<sup>1</sup> & IBC<sup>1</sup>

Brackets Included



## The Addison™ Railing

Color: ☐

Rail: T-Rail top rail & 2" x 3.5" bottom rail

Railing Height: 36" & 42" (bottom rail 2" from the ground)

Spindle Style: 1.5" Colonial Spindle

Length: 4', 6', 8' & 10' straight; 6' & 8' stair

Aluminum Inserts:

Top Rail Insert—included

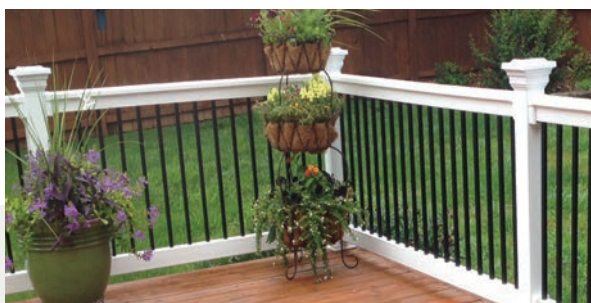
Bottom Rail Insert—optional

Stair Rail—top & bottom rail inserts are included

IRC<sup>1</sup> & IBC<sup>1</sup>

Brackets Included





### The Birmingham™ Railing

Color: ☐ ☐ ☐

Rail: T-Rail top rail & 2" x 3.5" bottom rail

Railing Height: 36" & 42" (bottom rail 2" from the ground)

Spindle Style: .75" Black Square Aluminum Spindle

Length: 4', 6', 8' & 10' straight; 6' & 8' stair

Aluminum Inserts:

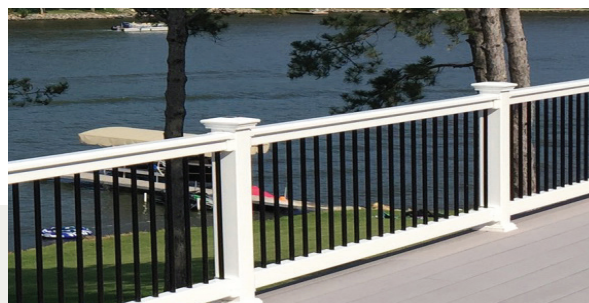
Top Rail Insert–included

Bottom Rail Insert–included

Stair Rail–top & bottom rail inserts are included

IRC<sup>1</sup> & IBC<sup>1</sup>

Brackets Included



### The Wiltshire™ Railing

Color: ☐ ☐ ☐

Rail: T-Rail top rail & 2" x 3.5" bottom rail

Railing Height: 36" & 42" (bottom rail 2" from the ground)

Spindle Style: .75" Black Round Aluminum Spindle

Length: 4', 6', 8' & 10' straight; 6' & 8' stair

Aluminum Inserts:

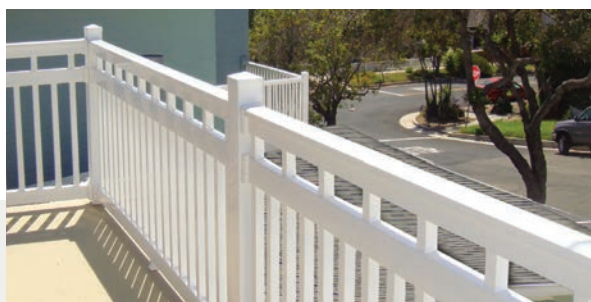
Top Rail Insert–included

Bottom Rail Insert–included

Stair Rail–top & bottom rail inserts are included

IRC<sup>1</sup> & IBC<sup>1</sup>

Brackets Included



### The Cheshire™ Railing

Color: ☐ ☐ ☐

Rail: T-Rail top rail & 2" x 3.5" bottom and mid rail

Railing Height: 42" (bottom rail 2" from the ground)

Spindle Style: 1.5" Square Spindle

Length: 4', 6', 8' & 10' straight

Aluminum Inserts:

Top Rail Insert–included

Bottom Rail Insert–optional

Stair Rail–N/A

IRC<sup>1</sup> & IBC<sup>1</sup>

Brackets Included



### The Jefferson™ Railing

Color: ☐

Rail: T-Rail black top rail & 2" x 3.5" white bottom rail

Railing Height: 36" & 42" (bottom rail 2" from the ground)

Spindle Style: .75" Black Round Aluminum

Length: 6', 8' & 10' straight, 6' & 8' stair

Metal Inserts:

Top Rail Insert – included

Bottom Rail Insert – included

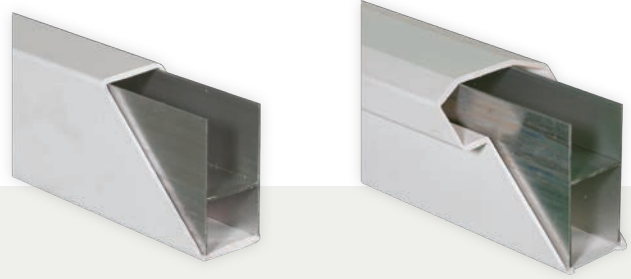
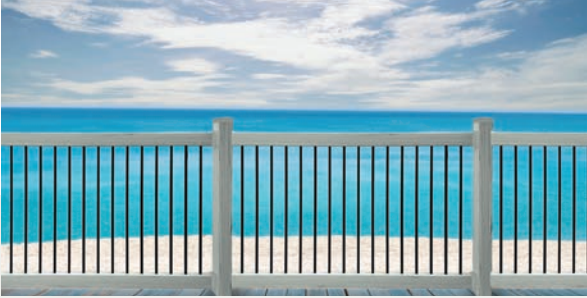
Stair Rail–Top Rail Insert – included

Bottom Rail Insert – included

IRC<sup>1</sup> & IBC<sup>1</sup>

Brackets Included

\*The brackets included with the premium stair railing are designed for angles of 30° to 40°.



### The Bedford™ Railing

Color:     

Rail: 2" x 3.5" top & bottom rail

Railing Height: 36" & 42" (bottom rail 2" from the ground)

Spindle Style: .75 Black Round Aluminum Spindle

Length: 4', 6' & 8' straight, 6' & 8' stair

#### Aluminum Inserts:

Top Rail Insert—included

Bottom Rail Insert—included

Stair Rail—N/A

IRC<sup>1</sup> & IBC<sup>1</sup>

Brackets Included

### Aluminum Insert (2" x 3.5" & T-Rail)

The aluminum inserts needed to meet testing requirements are included with each railing kit. Additional aluminum inserts are available for custom installations.

Size: 2" x 3.5" x 48"

Size: 2" x 3.5" X 72"

Size: 2" x 3.5" X 96"

Size: 2" x 3.5" X 120"



# Deck Board Railing

Our premium grade vinyl railing with a decorative top rail accent.



## The Bristol™ Deck Board Railing

Deck board not included- match to your specific deck

Color: ☐ ☐ ☐

Rail: 2" x 3.5" top & bottom rail

Railing Height: 36" & 42" (bottom rail 2" from the ground)

Spindle Style: 1.5" Square Spindle

Length: 4', 6' & 8' straight; 6' & 8' stair

Aluminum Inserts:

Top Rail Insert-included

Bottom Rail Insert-optional

Stair Rail-top & bottom rail inserts are included

IRC<sup>1</sup> & IBC<sup>1</sup>

Brackets Included

## The Wakefield™ Deck Board Railing

Deck board not included- match to your specific deck

Color: ☐

Rail: 2" x 3.5" top & bottom rail

Railing Height: 36" & 42" (bottom rail 2" from the ground)

Spindle Style: 1.5" Colonial Spindle

Length: 4', 6' & 8' straight; 6' & 8' stair

Aluminum Inserts:

Top Rail Insert-included

Bottom Rail Insert-optional

Stair Rail-top & bottom rail inserts are included

IRC<sup>1</sup> & IBC<sup>1</sup>

Brackets Included



## The Lancaster™ Deck Board Railing

Deck board not included- match to your specific deck

Color: ☐ ☐ ☐

Rail: 2" x 3.5" top & bottom rail

Railing Height: 36" & 42" (bottom rail 2" from the ground)

Spindle Style: .75" Square Aluminum Spindle

Length: 4', 6' & 8' straight; 6' & 8' stair

Aluminum Inserts:

Top Rail Insert-included

Bottom Rail Insert-included

Stair Rail-top & bottom rail inserts are included

IRC<sup>1</sup> & IBC<sup>1</sup>

Brackets Included

## The Derby™ Deck Board Railing

Deck board not included- match to your specific deck

Color: ☐ ☐ ☐

Rail: 2" x 3.5" top & bottom rail

Railing Height: 36" & 42" (bottom rail 2" from the ground)

Spindle Style: .75" Round Aluminum Spindle

Length: 4', 6' & 8' straight; 6' & 8' stair

Aluminum Inserts:

Top Rail Insert-included

Bottom Rail Insert-included

Stair Rail-top & bottom rail inserts are included

IRC<sup>1</sup> & IBC<sup>1</sup>

Brackets Included

# Vinyl Railing Gates

Blending optimal function and long-term performance, with top-of-the-line hardware.



## .875" x 1.5" Rectangular Spindle

Style: Greenwich & Yorkshire

Color: ☐ ☐ ☐

Rail: 2" x 3.5" or T-Rail top rail

Height: 36" & 42" (bottom rail 2" from the ground)



## 1.5" Square Spindle

Style: Berkshire, Washington & Bristol

Color: ☐ ☐ ☐

Rail: 2" x 3.5" or T-Rail top rail

Height: 36" & 42" (bottom rail 2" from the ground)



## 1.5" Colonial Spindle

Style: Burlington, Addison & Wakefield

Color: ☐

Rail: 2" x 3.5" or T-Rail top rail

Height: 36" & 42" (bottom rail 2" from the ground)



## 1.5" Square Spindle

Style: Cheshire

Color: ☐ ☐ ☐

Rail: T-Rail top rail

Height: 42" (bottom rail 2" from the ground)



## .75" Square Aluminum Spindle

Style: Birmingham & Lancaster

Color: ☐ ☐ ☐

Rail: T-Rail top rail

Height: 36" & 42" (bottom rail 2" from the ground)



## .75" Round Aluminum Spindle

Style: Wiltshire, Derby & Bolton

Color: ☐ ☐ ☐

Rail: T-Rail top rail

Height: 36" & 42" (bottom rail 2" from the ground)

Gate kits include commercial grade polyvinyl hardware:



Key-lockable latch



Self-closing hinges

# Wraps

For use around new or existing wood posts.

Available in: White, Tan or Khaki (unless noted) Replace the "X" in the product code with the selected color option:

□ White= W

■ Tan= T

■ Khaki= K



## Smooth Vinyl Post Wrap

Size: 4" x 4" x 96"- AXPT-WRAP-4X96

Size: 4" x 4" x 120"- AXPT-WRAP-4X120

Size: 6" x 6" x 96"- AXPT-WRAP-6X96

Size: 6" x 6" x 120"- AXPT-WRAP-6X120

\*Installed size is 0.25" larger than post wrap size

\*For use with Adjustable Post Skirt only



## Fluted Vinyl Post Wrap (White only)

Size: 4" x 4" x 102"- AWPT-WRAPFLUTELBP-4X102

Size: 4" x 4" x 120"- AWPT-WRAPFLUTELBP-4X120

Size: 6" x 6" x 102"- AWPT-WRAPFLUTELBP-6X102

Size: 6" x 6" x 120"- AWPT-WRAPFLUTELBP-6X120

Size: 8" x 8" x 102"- AWPT-WRAPFLUTELBP-8X102

Size: 8" x 8" base molding- AWPT-WRAPFLTRIM4PC-8

\*Installed size is 0.25" larger than post wrap size

\*For use with Adjustable Post Skirt only

# Wrap Skirts

Decorative trim at the base of each post provides a finished look.



## 4-Piece Adjustable Post Skirt

Size: ADJUSTABLE-AXPT-WRAPTRIM4PC-ADJ

\*Fits a 3", 3.5", 4", 5", 6" & 6.5" post



# Vinyl Sleeves

Attractive covers that fit over our post mounts.

Available in: White, Tan or Khaki (unless noted) Replace the "X" in the product code with the selected color option:

- ☐ White= W
- ☐ Tan= T
- ☐ Khaki= K



## Vinyl Blank Post Sleeve Kit

(Includes external post cap and post skirt)

Size: 4" x 4" x 39"-WXR-POSTKIT-4X39

Size: 4" x 4" x 45"-WXR-POSTKIT-4X45

Size: 4" x 4" x 54"-WXR-POSTKIT-4X54



## Vinyl Blank

Size: 4" x 4" x 39"-LXPT-BLANK-4X39

Size: 4" x 4" x 45"-LXPT-BLANK-4X45

Size: 4" x 4" x 72"-LXPT-BLANK-4X72

Size: 4" x 4" x 84"-LXPT-BLANK-4X84

\*More sizes available, and will fit over 4"x4" treated wood



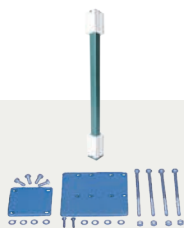
## Vinyl Newel: Colonial

(White only)

Size: 4" x 4" x 48"-LWPT-NEWELCOL-4X48

# Mounts

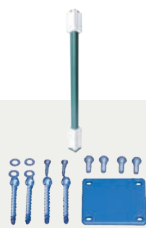
Simplify your post installation.



## Railing Post Mount with Wood Fasteners

AMPT-HDMOUNTWD-4X36

AMPT-HDMOUNTWD-4X42



## Railing Post Mount with Concrete Fasteners

AMPT-HDMOUNTCC-4X36

AMPT-HDMOUNTCC-4X42



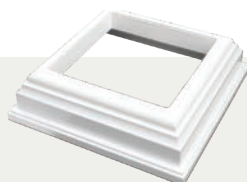
## General Mount

NOT FOR COMMERCIAL APPLICATION  
(mounting hardware sold separately)

AMPT-GENMOUNT-4

# Sleeve Skirts

Decorative trim at the base of each post provides a finished look.



## Post Skirt

Size: 4" x 4"-AXPT-SKIRT-4

Size: 5" x 5"-AXPT-SKIRT-5

Size: 6" x 6"-AXPT-SKIRT-6

\*More sizes available



## 2-Piece Federation Post Skirt

Size: 4" x 4"-AXPT-SKIRT2PC-4

Size: 5" x 5"-AXPT-SKIRT2PC-5

Size: 6" x 6"-AXPT-SKIRT2PC-6

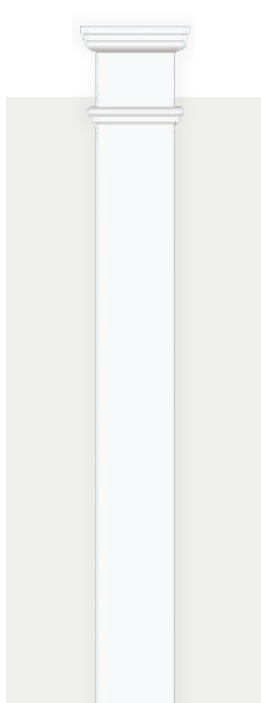
\*More sizes available

# Vinyl Columns

Supported by extruded aluminum for lightweight durability and superior strength.

Available in: White, Tan or Khaki (unless noted) Replace the "X" in the product code with the selected color option:

□ White= W  
 ■ Tan= T  
 ■ Khaki= K

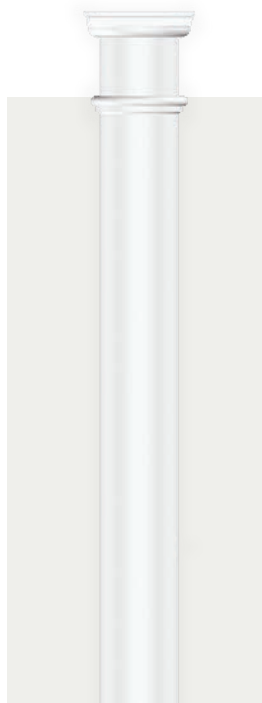


## Square Column

(White only)

Size: 8" x 8" x 96"  
 LWPT-SQCOLKIT-8X96

Size: 8" x 8" x 120"  
 LWPT-SQCOLKIT-8X120  
 (tested load of 11,000 lb.)



## Round Straight Column

(White only)

Size: 8" x 8" x 108"  
 LWPT-RNDSTCOLKIT-108  
 (tested load of 18,000 lb.)



## Round Tapered Column

(White only)

Size: 8" x 8" x 108"  
 LWPT-RNDTPCOLKIT-108  
 Size: 8" x 8" x 120"  
 LWPT-RNDTPCOLKIT-120  
 (tested load of 18,000 lb.)



## Colonial Structural

Size: 4" x 4" x 108"  
 LXPT-PPCOL-4X108

Size: 5" x 5" x 108"  
 LXPT-PPCOL-5X108  
 (tested load of 11,000 lb.)



## Square Structural

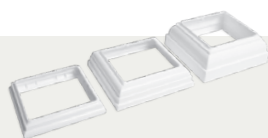
Size: 4" x 4" x 108"  
 LXPT-PPSQ-4X108

Size: 5" x 5" x 108"  
 LXPT-PPSQ-5X108

Size: 6" x 6" x 108"  
 LXPT-PPSQ-6X108  
 (tested load of 11,000 lb.)

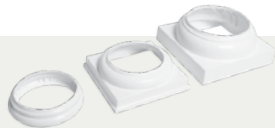
(Top & bottom skirts/trim kits are not included, but can be purchased separately)

## Trim Kits



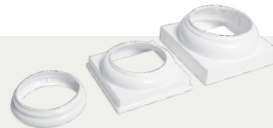
## Square Column

AWPT-BASE&COLLAR-8X8



## Round Straight Column

AWPT-BASE&COLLAR-RNDST



## Round Tapered Column

AWPT-BASE&COLLAR-RNDTP

Use skirts on page 23 or 24 with the Colonial Structural and Square Structural columns.

# Secondary (ADA) Railing

All the parts you need for ADA-compliant installations.

Available in: White, Tan, Khaki & Black (unless noted) Replace the "X" in the model number with the selected color option:

☐ White= W  
☐ Tan= T  
☐ Khaki= K  
☐ Black= B



**104" Rail with Stiffener**

NXRA-ADARAIL-1.5X104



**Hand Rail Bracket Kit**

NXRA-ADARAILBRK-1.5



**Straight Wall Return Kit**

NXRA-ADASTRTN-1.5



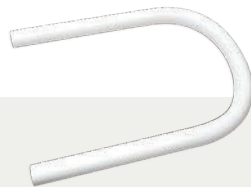
**Bracket Wall Return Cover Plate (4/bag)**

NXRA-ADACVRPLT-1.5



**Post Return**

NXRA-ADAPTRTN-16.5X6



**End Loop**

NXRA-ADALOOP-18X12



**90° Wall Return Kit w/Joiner**

NXRA-ADAWALLJOIN-1.5



**90° Exterior Corner**

NXRA-ADACORNER-1.5



**90° Exterior Corner w/Joiner**

NXRA-ADACORNJOIN-1.5



**90° Interior Corner**

NXRA-ADACORNERINS-1.5



**Straight Joiner (4/bag)**

NMRA-ADASTJOIN-6



**Adjustable Joiner (4/bag)**

NMRA-ADAJJOINADJ-1.5



**Joint Ring (4/bag)**

NXRA-ADAJTRING-1.5



**Rail End Cap (4/bag)**

NXCP-ADARAILEND-1.5



**External Adjustable Joiner with Male Ends and Joint Rings**

NXRA-ADAEXADJOIN-1.5

All parts shown are available in both residential & commercial grade. Residential grade shown.



# Classic Brackets

Secure, sturdy brackets for Greenwich, Yorkshire and Bolton railing.

Available in: White, Tan or Khaki (unless noted) Replace the "X" in the product code with the selected color option:

- White= W
- Tan= T
- Khaki= K



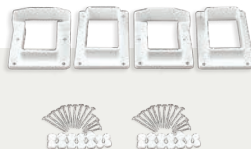
**2" x 3.5" 1-Piece Straight Kit**

AXBR-CVSTRGHTKIT-2X3.5



**2" x 3.5" 1-Piece Stair Kit**

AXBR-CVSTAIRKIT-2X3.5



**T-Rail & 2" x 3.5" 1-Piece Straight Kit**

AXBR-CVSTRGHTKIT-TRAIL



**T-Rail & 2" x 3.5" 1-Piece Stair Kit**

AXBR-CVSTAIRKIT-TRAIL

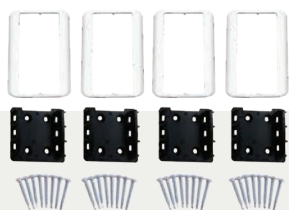
*\*Classic stair rail brackets are designed for angles of 28° to 42°.*

# Premium Brackets

Dependable accessories for our premium line of railing.

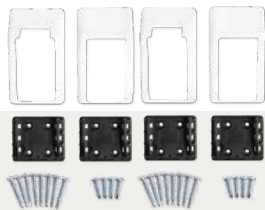
Available in: White, Tan or Khaki (unless noted) Replace the "X" in the product code with the selected color option:

☐ White= W  
☐ Tan= T  
☐ Khaki= K



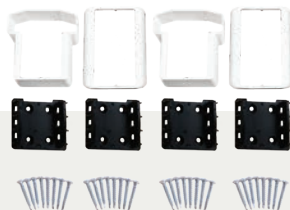
**2" x 3.5" 2-Piece Straight Kit**

AXBR-2PCSTRGHTKIT-2X3.5



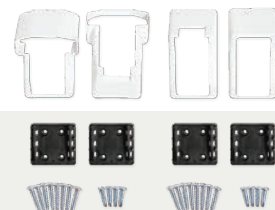
**2" x 3.5" 2-Piece Stair Kit**

AXBR-STAIRKIT-2X3.5



**T-Rail & 2" x 3.5" 2-Piece Straight Kit**

AXBR-STRGHTKIT-TRAIL



**T-Rail & 2" x 3.5" 2-Piece Stair Kit**

AXBR-2PCSTRGHTKIT-TRAIL

*\*Premium stair rail brackets are designed for angles of 30° to 40°.*



**Deck Board Clips**

AMBR-DECKCLIP-KIT



**Deck Board Stair Bracket Set**

AXBR-STAIRSETDB-2X3.5

# Classic and Premium Brackets

Universal accessories offer ultimate versatility.

Available in: White, Tan or Khaki  
(unless noted) Replace the "X" in the product code with the selected color option:

□ White= W

■ Tan= T

■ Khaki= K



## 2" x 3.5" Adjustable Straight Kit

AXBR-WIZANGLE-2X3.5



## T-Rail & 2" x 3.5" Adjustable Straight Kit

AXBR-WIZANGLE-TRAIL



## 2" x 3.5" Adjustable Stair Kit

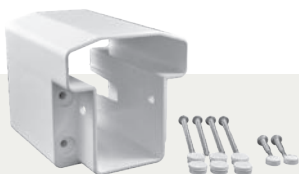
AXBR-WIZSTAIR-2X3.5



## T-Rail & 2" x 3.5" Adjustable Stair Kit

AXBR-WIZSTAIR-TRAIL

*\*Brackets above are designed for angles of 15° to 45°.*



## T-Rail Field Cut Bracket

AXBR-FIELD-TRAIL



## 2" x 3.5" Field Cut Bracket

AXBR-FIELD-2X3.5



## 45° Classic Bracket T-Rail Adapter

AXBR-CV45ADAPTER-TRAIL



## 45° Classic Bracket 2" x 3.5" Adapter

AXBR-CV45ADAPTER-2X3.5

*\*Brackets above accommodate a vertical or horizontal custom angle.*

# Foot Blocks

For added strength when splitting a rail section.



## 8" Column Classic Bracket Adapter

AXBR-CVCOLADAPTER-8



## 8" Column Classic Stair Bracket Adapter

AXBR-CVCOLSTAIRADP-8



## Premium Foot Block

AXRA-FOOTBLOCK-1.5



## Classic Foot Block

AXRA-CVFOOTBLOCK-1.5X1.5X8





# **WEATHERABLES<sup>®</sup> ALUMINUM FENCING & RAILING:**

**LOW MAINTENANCE**

**PREMIUM QUALITY & DURABILITY**

**IMPACT- AND WEATHER-RESISTANT**

**FREE SHIPPING**

**A MINIMUM ORDER APPLIES**



# Aluminum Fencing

A classy yet low-maintenance, economical fencing option.

Manufactured from the best aluminum in the industry, our aluminum fencing offers strength and security plus it looks great! Proven not to rust or corrode, aluminum fencing is the perfect addition to your yard.



## The Mansfield Aluminum Fencing

Height: 4' & 5'

Width: 6'

Gate Width: Single 4', 5' Double 8' & 10'

Picket Style: Flat top

Color:



## The Toledo Aluminum Fencing

Height: 4' & 5'

Width: 6'

Gate Width: Single 4', 5' Double 8' & 10'

Picket Style: Alternating spear flat top

Color:



## The Terrier Aluminum Fence

Height: 4'

Width: 6'

Gate Width: Single: 4' Double: 8'

Picket Style: Flat top

Color:

## The Pacific Aluminum Fencing

Height: 4.5'

Width: 6'

Gate Width: Single 4', 5' Double 8' & 10'

Picket Style: Flat top & flush bottom

Color:

## The Atlantic Aluminum Fencing

Height: 4'

Width: 6'

Gate Width: Single 4', 5' Double 8' & 10'

Picket Style: Flat top & flush bottom

Color:

# Aluminum Fencing Accessories

Expand your options with our matching fittings.

Black in stock. Additional colors available by special order.



**Residential Straight Rail End Bracket**

1" side wall

(Includes 3 #8-1" screws)



**Commercial Straight Rail End Bracket for Atlantic**

1.5" side wall

(Includes 3 #8-1" screws)



**Swivel Rail Bracket**

(Includes 3 #8-1" screws)



**Floor Flange**

(fasteners not included)



**Touch Up Paint**



**Screws**

#10-1" screws



**End Post**



**Line Post**



**Corner Post**



**Gate End Post**



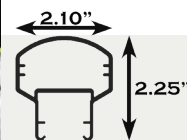
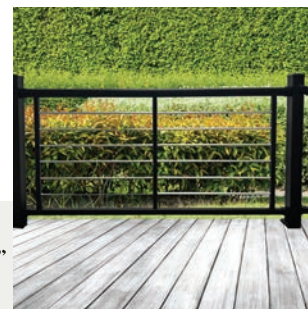
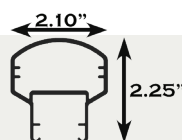
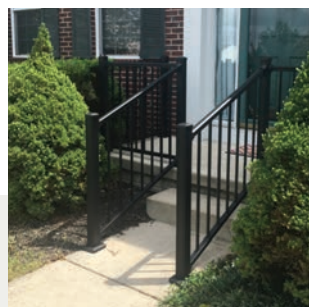
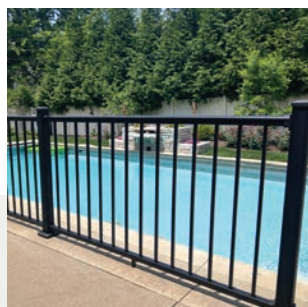
**Gate Blank Post**



# Aluminum Railing

An economical alternative to traditional wrought iron.

Offering a sleek, clean look, our premium quality aluminum railing is manufactured from the best aluminum in the industry. No matter what Mother Nature decides to throw at it, it will not cause excessive corrosion or rust.



## The Stanford

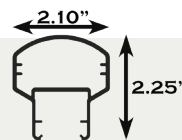
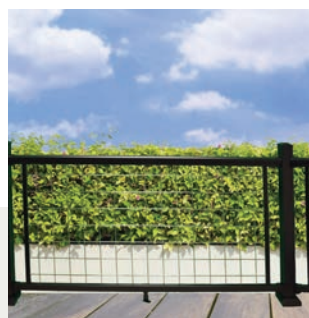
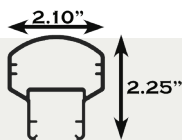
Color: Textured Black, Textured White  
 Rail: 1.65" x 1.720" Bread-loaf molded top rail & 1.25" x 1.375" bottom rail  
 Railing Height: 36" & 42" (bottom rail 2" from the ground)  
 Spindle Style: .60" Square Spindles  
 Length: 6' & 8' straight; 6' & 8' stair  
 IRC<sup>2</sup> & IBC<sup>2</sup>  
 Brackets Included  
 (Stair brackets are designed for angles of 32° to 36°)

## The Arlington

Color: Textured Black  
 Rail: 2.25" x 2.10" Bread-loaf molded top rail & 1.5" x 1.25" bottom rail  
 Railing Height: 36" & 42" (bottom rail 2" from the ground)  
 Gate Width: 60"  
 Spindle Style: .75" Square Spindles  
 Length: 6', 8' & 10' straight; 6' & 8' stair  
 IRC<sup>3</sup> & IBC<sup>3</sup>  
 Brackets Included

## The Cornell

Color: Textured Black  
 Rail: 2.25" x 2.10" Bread-loaf molded top rail & 1.5" x 1.25" bottom rail  
 Railing Height: 36" & 42" (bottom rail 2" from the ground)  
 Spindle Style: Silver aluminum rod  
 Length: 6' & 8' straight; 6' & 8' stair  
 Brackets Included



## The Georgetown

Color: Textured Black  
 Rail: 2.25" x 2.10" Bread-loaf molded top rail & 1.5" x 1.25" bottom rail  
 Railing Height: 36" & 42" (bottom rail 2" from the ground)  
 Spindle Style: Black aluminum rod  
 Length: 6' & 8' straight; 6' & 8' stair  
 Brackets Included

## The Morocco

Color: Textured Black  
 Rail: 2.25" x 2.10" Bread-loaf molded top rail & 1.5" x 1.25" bottom rail  
 Railing Height: 36" (bottom rail 2" from the ground)  
 Spindle Style: Mesh  
 Length: 6' & 8' straight; 6' stair  
 Brackets Included

*\*Railing height noted is the installed height.*

# Aluminum Railing Accessories

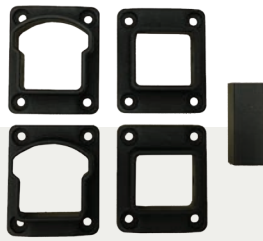
Expand your options with our matching fittings.



## Stanford Aluminum Railing Post Kit

Includes post cap, 1-piece post skirt and base flange (fasteners not included).

Size: 2.5" x 2.5" x 39"  
2.5" x 2.5" x 45"  
2.5" x 2.5" x 54"



## Stanford Aluminum Railing Straight Brackets

(includes fasteners and foot block)



## Stanford Aluminum Railing Stair Brackets

(includes fasteners)



## Stanford Aluminum Railing Adjustable Brackets

(adjust vertically & horizontally and includes fasteners)



## Arlington Aluminum Railing Post Kit

Includes post cap, 2-piece post skirt and base flange (fasteners not included).

Size: 3" x 3" x 39"  
3" x 3" x 45"  
3" x 3" x 54"



## Arlington Aluminum Railing Straight Brackets

(includes fasteners and foot block)



## Arlington Aluminum Railing Universal Brackets

(includes fasteners)

# Secondary (ADA) Aluminum Railing



## Wall Return Aluminum Railing

Rail: 1.5" diameter  
Length: 4', 6' or 8'  
Attachment: (2) 90-degree wall returns, 8' includes additional middle mount  
Hardware: Wall mounts with wood fasteners  
Color: ☐ ☒

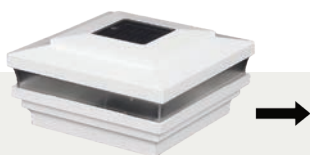


## Straight Aluminum Railing

Rail: 1.5" diameter  
Length: 4', 6' or 8'  
Attachment: (2) wall mounts, 8' includes additional middle mount  
Hardware: Wall mounts with wood fasteners  
Color: ☐ ☒

# Solar Post Caps

Enhance your look with architectural details and lighting.



**Cape May Solar LED**

Size: 4", 5" & 6"

Color: ☐ ☐ ☐



**Cape May Downward Solar LED**

Size: 4" & 5"

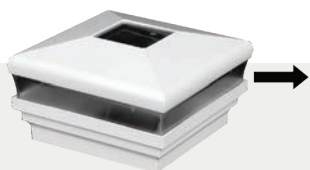
Color: ☐ ☐ ☐



**Classic Solar LED**

Size: 3.5", 4" & 5"

Color: ☐ ☐ ☐



**Neptune Solar LED**

Size: 4", 5" & 6"

Color: ☐ ☐ ☐



**Neptune Downward Solar LED**

Size: 4" & 5"

Color: ☐ ☐ ☐



**Galaxy Solar LED**

Size: 3.5", 4" & 5"

Color: ☐ ☐ ☐



**Cambridge Solar LED**

Size: 4", 5" & 6"

Color: ☐ ☐ ☐

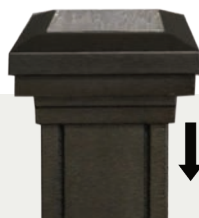
*\*Arrow indicates direction of light*



**Ornamental Lens Solar LED**

Size: 2.5" & 3"

Color: Textured Black & Textured White



**Ornamental Downward Solar LED**

Size: 2.5" & 3"

Color: Textured Black & Textured White



# LED Low Voltage Post Caps

Enhance your look with architectural details and lighting.

(All low-voltage LED post caps work with power supplies and wiring harnesses on page 38)



**Cape May Low Voltage LED**

Size: 4" & 5"

Color: ☐ ☐ ☐



Starter packs include 6 caps, wiring & a low voltage adapter.



**Cape May Downward Low Voltage LED**

Size: 4" & 5"

Color: ☐ ☐ ☐



**Haven Low Voltage LED**

Size: 4" & 5"

Color: ☐ ☐ ☐



**Cape May Low Voltage LED Starter Pack**



Expansion packs include 1 cap & wiring

**Cape May Downward Low Voltage LED Starter Pack**



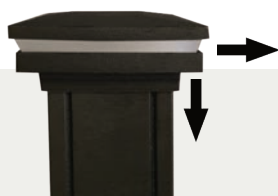
**Haven Low Voltage LED Starter Pack**



**Cape May Low Voltage LED Expansion Pack**

**Cape May Downward Low Voltage LED Expansion Pack**

**Haven Low Voltage LED Expansion Pack**



**Ornamental Combination Low Voltage LED**

Size: 2.5" & 3"

Color: ☐ ☐



**Ornamental Downward Low Voltage LED**

Size: 2.5" & 3"

Color: ☐ ☐



**Ornamental Lens Low Voltage LED**

Size: 2.5" & 3"

Color: ☐ ☐



### Haven Downward Low Voltage LED

Size: 4" & 5"

Color: ☐ ☐ ☐



Starter packs include 6 caps, wiring & a low voltage adapter.



### Neptune Low Voltage LED

Size: 4" & 5"

Color: ☐ ☐ ☐



### Neptune Downward Low Voltage LED

Size: 4" & 5"

Color: ☐ ☐ ☐



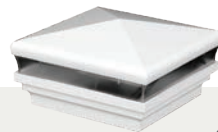
### Haven Downward Low Voltage LED Starter Pack



Expansion packs include 1 cap & wiring

### Haven Downward Low Voltage LED Expansion Pack

### Neptune Low Voltage LED Starter Pack



### Neptune Low Voltage LED Expansion Pack

### Neptune Downward Low Voltage LED Starter Pack



### Neptune Downward Low Voltage LED Expansion Pack

# Lighting Accessories

Add ambiance to your outdoor space with easy to install lighting.



## LED Under Rail Light Strip

Size: 68" & 92"  
Color: ☐ ☐ ☐ ☐



## 3" LED Under Rail Light

Size: 3" with 10" lead wire  
Color: ☐ ☐ ☐ ☐



## LED Dome Side Light

Size: 2.75" x 1.344"  
9" lead wire  
Color: ☐ ☐ ☐ ☐



## LED Flush Deck Light - Frosted Acrylic

Size: .955" (diameter) x .685" (depth) 9" lead wire



## LED Stair/Side Light with Covers

Size: 1.130" x 3.223"  
Color: ☐ ☐ ☐ ☐



## Ornamental Low Voltage Side Light

Size: 1.5"  
Color: ☐ ☐

# Power Supply and Wiring Harnesses

(Works with the low voltage LED lights above and with the low voltage LED post caps on page 36 & 37)



## 50 Watt Power Supply with Photo Eye, Timer and Remote



## 12 Watt Power Supply with Photo Eye



## 12 Watt Dimmer Switch

(includes remote control)



## 2' Harness Connector



## 5' Harness Connector



## 7' Harness Connector



## 9' Harness Connector



## 5 Output Splitter



## 2 Output Splitter



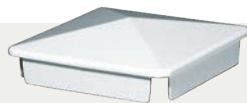
# Traditional Post Caps

Enhance your look with architectural detail and style.



## External

Size: 3", 3.5", 4", 5", 6" & 6.5"  
(6.5" only available in white)  
Color: ☐ ☐ ☐ ☐



## Internal

Size: 4" & 5"  
Color: ☐ ☐ ☐



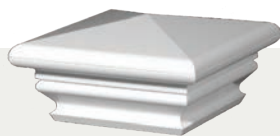
## Gothic

Size: 3.5", 4" & 5"  
Color: ☐ ☐ ☐



## Ball

Size: 4" & 5"  
Color: ☐ ☐ ☐



## Federation

Size: 4", 5" & 6"  
Color: ☐ ☐ ☐



## Cape May

Size: 4", 5" & 6"  
Color: ☐ ☐ ☐



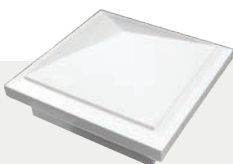
## New England

Size: 4", 5", 6" & 6.5"  
(6.5" only available in white)  
Color: ☐ ☐ ☐ ☐



## Neptune

Size: 4", 5" & 6"  
Color: ☐ ☐ ☐



## Haven

Size: 4", 5" & 6"  
Color: ☐ ☐ ☐



## Coachman

Size: 5"  
Color: ☐



## Horse Head

Size: 5"  
Color: ☐ ☐ ☐



## Ornamental

Size: 2.5", 3", 4" (4" - Black only)  
Color: ☐ ☐



- \*1 - Straight Railing is tested in accordance with ICC-ES Standards - Report ESR-4954
- \*2 - Straight Railing is tested in accordance with ASTM D70032 Standards - PEI Report 6414
- \*3 - Straight Railing is tested in accordance with ICC-ES Standards - Intertek Report 200115007SHF & 210422012SHF

# weatherables®

WSR-WEAFULL-2024

Purchaser has the sole responsibility to determine whether Weatherables® products comply with applicable codes and are appropriate for the intended use. The purchaser and installer should review the intended use of the products with a licensed professional engineer to determine code compliance and the intended use.



Weatherables® is a federally registered trademark of USA Vinyl, LLC. ©2024 USA Vinyl, LLC.