

Accessories

BLUM
focus on productivity



STYLI

AND ACCESSORIES

FOR PROBE & LASER SYSTEMS



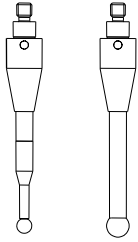
CONTACT US TODAY FOR A QUOTE:

chill@primetechnicalservices.com

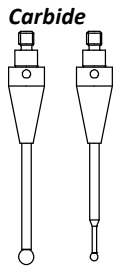


Old item no.

New item no.

Styli TC50/51/60/61**Ceramic**

Length	Ø		
50 mm	1	30801005001	143411
	2	30801005002	143412
	4	30801005004	143414
	5	30801005005	143415
	6*	30801005006	143416
	75 mm	1	30801007501
2		30801007502	143418
3		30801007503	143419
4		30801007504	143420
5		30801007505	143421
6		30801007506	143422
100mm	1	30801010001	143423
	2	30801010002	143424
	3	30801010003	143425
	4	30801010004	143426
	5	30801010005	143427
	6*	30801010006	143428
150 mm	4	30801015004	143430
	6*	30801015006	143431
200 mm	6	30801020006	143432
250 mm	6	30801025006	143433
300 mm	6	30801030006	143435



		Old item no.	New item no.	
50 mm	Ø	1	30801205001	143522
		2	30801205002	143523
		3	30801205003	143524
		4	30801205004	143525
		5	30801205005	143526
		6*	30801205006	143527
75 mm	Ø	3	30801207503	143528
		4	30801207504	143529
		5	30801207505	143530
		6	30801207506	143531
100 mm	Ø	3	30801210003	143532
		4	30801210004	143533
		5	30801210005	143534
		6*	30801210006	143535



Old item no.

New item no.

Accessories TC50/51/60/61

Extension for styli



Länge/Length

Länge/Length	Old item no.	New item no.
50 mm	308015050	143708
75 mm	308015075	143709
100 mm	308015100	143710

Adapter
adapter with predetermined breaking
point



308012350

143566

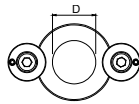
Adapter
adapter for styli with M4 interface



308009101

143409

Calibration ring $d=40$ $h=18$ with clamping
elements



308020005

143727



Old item no.

New item no.

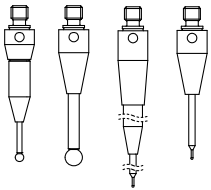
Styli TC52/53/54/62/63/64/76

Ceramic



L [mm]	Ø		
50	1	30802005001	143743
	2	30802005002	143744
	4	30802005004	143746
	5	30802005005*	143747*
	6	30802005006	143748
	75	1	30802007501
2		30802007502	143750
3		30802007503	143751
4		30802007504	143752
5		30802007505	143753
6		30802007506	143754
100	1	30802010001	143755
	2	30802010002	143756
	3	30802010003	143757
	4	30802010004	143758
	5	30802010005	143759
	6	30802010006	143760

Carbide



Length	Ø		
20	0,5 ¹⁾	308022020005	143766
	1	30802202001	143767
	2	30802202002	143768
	3	30802202003	143769
	4	30802202004	143770
	5	30802202005	143771
	6	30802202006	143772
30	0,5 ¹⁾	308022030005	143773
	1	30802203001	143775
	2	30802203002	143776
	3*	30802203003	143777
	4	30802203004	143778
	5	30802203005	143779
	6	30802203006	143780
50	0,5 ¹⁾	308022050005	143781
	1	30802205001	143782
	2	30802205002	143783
	3	30802205003	143784
	4	30802205004	143785
	5*	30802205005	143786
	6	30802205006	143787
75	1	30802207501	143788
	2	30802207502	143789
	3	30802207503	143790
	4	30802207504	143791
	5	30802207505	143792
	6	30802207506	143793
100	1	30802210001	143794
	2	30802210002	143795
	3	30802210003	143796
	4	30802210004	143797
	5	30802210005	143798
	6	30802210006	143799

ball: carbide

* ex stock available

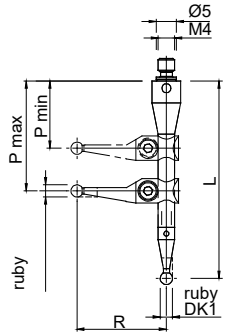


Old item no.

New item no.

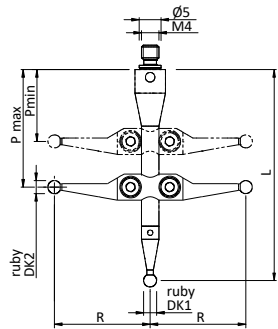
Styli TC53/54/63/64/76

Steel



L [mm]	DK1 [mm]	R [mm]	DK2 [mm]	Pmin- P max [mm]		
48,5	3	22			3080232010	143841
		30	3	16,5 -	3080232015	143842
		40		32,5	3080232020	143843
85	6	22			3080232025	143844
		30	3	16,5 -	3080232030	143846
		40		72,5	3080232035	143847

Steel

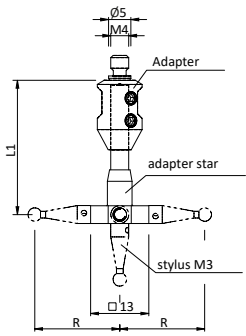


L [mm]	DK1 [mm]	R [mm]	DK2 [mm]	Pmin- P max [mm]		
48,5	3	22			3080232070	143857
		30	3	16,5 -	3080232075	143858
		40		32,5	3080232080	143859
85	6	22			3080232085	143860
		30	3	16,5 -	3080232090	143861
		40		72,5	3080232095	143862



Old item no.

New item no.



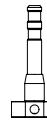
Adapter



3080232125

143872

Adapter



3080232130

143873

adapter star

3080232135

143875

3080232140

143877

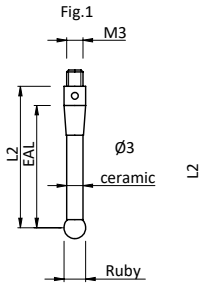
L1
[mm]

30

50

75

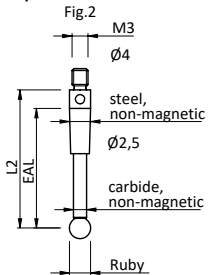
Fig.1



DK [mm]	L2 [mm]	EAL [mm]	R [mm]	Old item no.	New item no.
4	26	22,5	32,5	3080232205	143895
4	50	46,5	56,5	3080232170	143886
4	75	71,5	81,5	3080232210	143896
5	50		56,5	3080232180	143889
5	60		66,5	3080232185	143890
6	26		32,5	3080232121	143871

Stylus M3

Fig.2



4	26	22,5	32,5	3080232235	143901
4	40	36,5	46,5	3080232240	143903
4	50	46,5	56,5	3080232245	143905
4	75	71,5	81,5	3080232250	143906

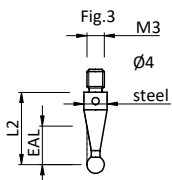
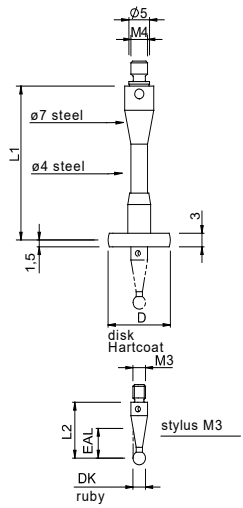


Fig.3

3	9,5	3,2	16	310118135K	144800
3	12,5	3,7	19	310118141K	144810
3	20,5	3,7	27	310118139K	144806
6	9,5	9,0	16	310118129O	144788
6	21,5	21,0	27	310118150O	144828



					Old item no.	New item no.
L1	DK	L2	EAL	D		
[mm]	[mm]	[mm]	[mm]	[mm]		
34,5				15	3080242050	143994
				20	3080242055	143995
				30	3080242060	143996
				40	3080242065	143997
				15	3080242070	143998
74				20	3080242075	143999
				30	3080242080	144000
				40	3080242085	144001
	<i>stylus</i>	3	9,5	3,2	310118135K	144800
	M3	3	12,5	3,7	310118141K	144810
		3	20,5	3,7	310118139K	144806
		6	9,5	9,0	3101181290	144788
		6	21,5	21,0	3101181500	144828



Old item no.

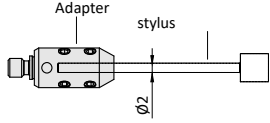
New item no.

Styli TC53/54/76

Adapter

308025300*

144093*



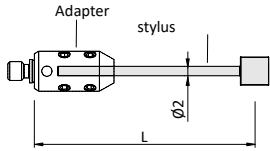
Carbide

L [mm]



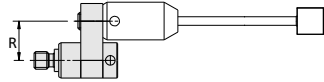
Stylus

22	Q6	308025348	144122
27	Q6	308025342	144116
30 *	Q6	308025341	144115
36	Q6	308025343	144117
47 *	Q6	308025340*	144114*
52	Q6	308025345	144119
57	Q6	308025351	144125
62	Q6	308025344	144118
77	Q6	308025346	144120



Adapter

R [mm]



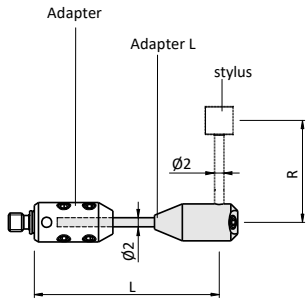
R8,9*	308025010	144078
R20	308025012	144079
R50	308025015	144081

Carbide

L [mm]

Adapter L

35 *	308025500	144130
40	308025501	144131
50	308025502	144132
60	308025503	144133



* ex stock available

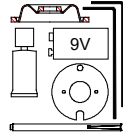


Old item no.

New item no.

Spare Parts**TC50/51/53-30/60/63-30 – A1 + A2****Ø63**

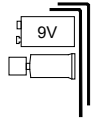
Accessory set TC50 TC51 TC60
mounting tool, bellow, battery, special grease



308020001

143722

Accessory set for TC53-30 / TC63-30
mounting tool, battery, special grease



308020013

143738

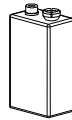
Accessory set bellow
probe TC50/TC51 (5 pcs)



308020002

143724

Batterie 9,0 V / 1200 mA, 9 V
Battery 9.0 V / 1200 mAh, 9 V
Battery for Probe Ø63 – A1, A2 Type
Ultralife Lithium U9VL-J



980702003*

170402*

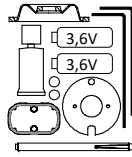


Old item no.

New item no.

Spare Parts**TC50/51/53-30/60/61/63-30 – A3****Ø63**

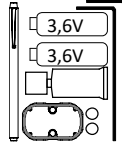
Accessory set TC50-A3 TC51-A3 TC60-A3
TC61-A3
mounting tools, bellow, battery, special
grease



308020003

143725

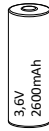
Accessory set TC53-30-A3 TC63-30-A3
mounting tools, battery, special grease



308020004

143726

Batterie 3,6 V 2600 mA, AA
Battery 3.6 V 2600 mA, AA
Battery for Probe Ø63 – A3
Type Saft Lithium LS14500
(2 pcs. required)

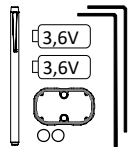


980702010

170407

Spare Parts**TC52/53-10/53-20/54/62/63-20/64****Ø40**

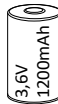
TC54/TC62/TC63-10/TC63-20/TC64
mounting tools, battery



308020011

143735

Batterie 3,6 V 1200 mAh, ½ AA
Battery 3,6 V 1200 mAh, ½ AA
Battery for Probe Ø40
Type Saft Lithium LS14250, (2 pcs. required)



980702004*

170406*

Spare Parts TC76

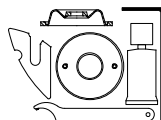
Accessory set bellow
(5 pcs.)



308020010

143734

Accessory set TC76



308020012

143737

Blind plug M16x1



307640113

143200



Old item no.

New item no.

2. Tool Holder

System BTH 50

*Tool holder for TC series / BG60 series***Ø63**

HSK-A 40	L = 57 mm		308035140A	144376
HSK-A 50	L = 63 mm		308035150A	144380
HSK-A 63	L = 50 mm		308035163A	144383
HSK-A 80	L = 55 mm		308035180A	144391
HSK-A 100	L = 60 mm		308035100A	144372
HSK-E 40	L = 57 mm		308035140E	144377
HSK-E 50	L = 63 mm		308035150E	144381
HSK-E 63	L = 50 mm		308035163E	144385
HSK-B 80	L = 50 mm		308035180B	144392
HSK-F 40	L = 57 mm		308035140F	144378
HSK-F 63	L = 70 mm		308035163F	144386
SK 30	L = 56 mm		308035230	144396
SK 40	L = 46 mm		308035240	144397
SK 45	L = 24 mm		308035245	144399
SK 50	L = 24 mm		308035250	144400
BT 30	L = 46 mm		308035330	144406
BT 40	L = 50 mm		308035340	144407
BT 50	L = 40 mm		308035350	144408
VDI 30	L = 41 mm		308035630	144411
VDI 40	L = 45 mm		308035640	144414
VDI 50	L = 45 mm		308035650	144417
VDI 60	L = 45 mm		308035660	144420
Polygon shank C5			308035955	144446
Polygon shank C6			308035956	144449
Polygon shank C8			308035958	144452
KM63XMZ	L = 50 mm		308035963	144455
CAT40 5/8"-11 UNC	L = 50 mm		308035440	144409
CAT50 1"-8 UNC	L = 60 mm		308035450	144410
Clamping shaft d=50/25 x l=82			308035906	144432
Clamping ring			308035908	144433
Extension BTH 50 L = 65 mm			308035921	144436
L = 100 mm			308035923	144438



Old item no.

New item no.

System BTH 25*Tool holder for TC series***Ø40**

HSK-A 25 L = 32,5 mm

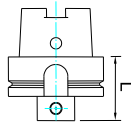
HSK-A 32 L = 35 mm

HSK-A 40 L = 35 mm

HSK-A 50 L = 42 mm

HSK-A 63 L = 42 mm

HSK-A 100 L = 60 mm



308036125A

144470

308036132A

144472

308036140A

144475

308036150A

144477

308036163A

144479

308036100A

144469

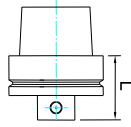
HSK-E 25 L = 32,5 mm

HSK-E 32 L = 35 mm

HSK-E 40 L = 35 mm

HSK-E 50 L = 42 mm

HSK-E 63 L = 42 mm



308036125E

144471

308036132E

144473

308036140E

144476

308036150E

144478

308036163E

144480

HSK-F 63 L = 50 mm

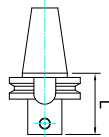
308036163F

144481

SK 30 L = 20 mm

SK 40 L = 24 mm

SK 50 L = 40 mm



308036230

144482

308036240

144483

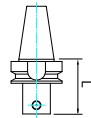
308036250

144484

BT 30 L = 24 mm

BT 40 L = 28 mm

BT 50 L = 40 mm



308036330

144485

308036340

144486

308036350

144488

VDI 20 L = 16 mm

VDI 25 L = 16 mm

VDI 30 L = 16 mm

VDI 40 L = 20 mm

VDI 50 L = 20 mm

308036620

144494

308036625

144496

308036630

144498

308036640

144500

308036650

144502

Polygon shank C4

Polygon shank C5

Polygon shank C6

308036954

144576

308036955

144579

308036956

144582

Erowa D72

308036701

144505

3R Macro

308036702

On request

3R GPS70

308036703

On request

CAT40 5/8"-11 UNC L = 40 mm

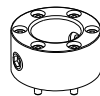
308036440

144489

Clamping shaft d=25/16 x l=58

308036906

144522

Clamping ring

308036908

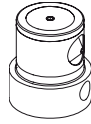
144526



Tool Holder

		Old item no.	New item no.
--	--	--------------	--------------

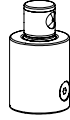
Reduction BTH 50 – BTH 25



308036916

144546

Extension BTH 25 L = 30 mm
L = 50 mm
L = 100 mm



308036921

144555

308036922

144557

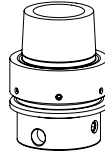
308036923

144559

Tool holder vibration-insulating

HSK-E 40 - BTH 25

HSK-E 50 – BTH 25



308036911

144532

308036912

144536

Adapter BTH 25 vibration-insulating



308036935


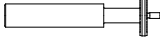
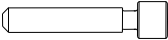
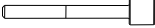
144572



Old item no

New item no

Reference tool

Reference tool A5 $\varnothing 8/S-R4$ DS8 for LC50-DIGILOG		330012334	146782
Reference tool A4 $\varnothing 2/\varnothing 14$ DS8 for LC52-DIGILOG, LaserControl NT-H 3D		330012373	146829
Reference tool A2 $\varnothing 12$ DS8 for LaserControl NT		330012332	146779
Reference tool A3 $\varnothing 6$ DS3 for LaserControl NT		330012370	146822

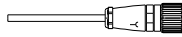
Old item no

New item no

Anschlusskabel / Connecting cable

Anschlusskabel Laser mit Optionen
Connecting cable Laser with options

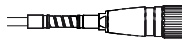
10 m OS
20 m OS



330092010D
330092020D

149543
149551

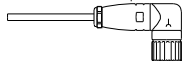
10/1,5 m SH
20/1,5 m SH



330092010E
330092020E

149544
149552

10 m OS 90°
20 m OS 90°



330093010D
330093020D

149577
149581

10/1,5 m SH 90°
20/1,5 m SH 90°

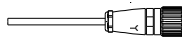


330093010E
330093020E

149578
149582

Anschlusskabel Laser
Connecting cable Laser

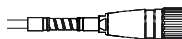
10 m OS
20 m OS



330094010D
330094020D

149591
149599

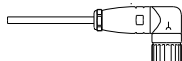
10/1,5 m SH
20/1,5 m SH



330094010E
330094020E

149592
149600

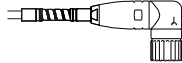
10 m OS 90°
20 m OS 90°



330095010D
330095020D

149698
149704

10/1,5 m SH 90°
20/1,5 m SH 90°



330095010E
330095020E

149699
149705



Old item no

New item no

Spare parts

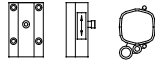
Maintenance kit for pollution protector 32-1
32-1A
(MINI, MICRO + NANO)



330032200

149069

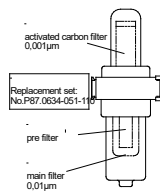
Spare parts kit Pollution protector 32-1
NANO, MICRO, MINI



149073

PNE-054-10

Spare parts kit filter PNE 051/ 054/FS62
5µm / 0.01µm / 0.001µm incl. set of O-rings



330051110

149193

Clear plastic container for filter
unit PNE-051 / 054-10



330051113

149196