

The Legend of Lorelei

March/April 2026



BOARD OF TRUSTEES

Bruce Simeone, President
James Padgett, Vice-President
Donna Murray, Secretary
Lee Duncan, Treasurer
John Wyman
Mark Haberer
Kevin Hollstegge
Andy Poole
Jim Rundo

OFFICE CONTACTS

Chris Kwiatkowski, Director
director@lakelorelei.ohio.com
Brittany Smith, Office Manager
manager@lakelorelei.ohio.com
Candice Boyle, Member Coordinator
office@lakelorelei.ohio.com
Rhonda Holland, Security Supervisor
513-875-3222

OFFICE HOURS

513-875-3435
Sunday: Closed
Mon, Tues, Sat: Appointment only
Wed, Thurs, Fri: Walk-ins 9 am-5 pm

LEGEND CONTACT

Katrina Stapleton, Editor
thelegend@lakelorelei.ohio.com

Upcoming Events

March

2nd Water Quality Committee Meeting 6:30 @ 1309 Mann Cove
5th Women's Club Meeting 6:30 pm at Riverhills Church
9th Activities Committee Meeting 6:30 pm
19th Community Volunteer Committee Meeting 7 pm email Len Pohlar at pohlarlp@gmail.com for location

April

2nd Women's Club Meeting 6:30 pm at Riverhills Church
4th Spring Fishing Tournament 7 am- 3 pm
6th Water Quality Committee Meeting 6:30 @ 1309 Mann Cove
7th Tuesday Evening Fishing Tournament 6 pm- 8:30 pm
13th Activities Committee Meeting 6:30 pm
16th Community Volunteer Committee Meeting 7 pm email Len Pohlar at pohlarlp@gmail.com for location
18th BOT Annual Meeting @ Riverhills Church 10 am
22nd Tuesday Evening Fishing Tournament 6 pm- 9 pm
25th Women's Club day @ John's Flowers 9 am-4 pm

May

1st Women's Club Yard Sale Member's Only Preview 6 pm-9 pm
2nd-3rd Women's Club Yard Sale Open to the Public 9 am-4 pm
4th Water Quality Committee Meeting 6:30 @ 1309 Mann Cove
5th Tuesday Evening Fishing Tournament 6 pm- 9 pm
7th Women's Club Meeting 6:30 pm at Riverhills Church
11th Activities Committee Meeting 6:30 pm
16th Beautification & BBQ 9 am- Noon, lunch to follow
19th Tuesday Evening Fishing Tournament 6 pm- 9:30 pm
21st Community Volunteer Committee Meeting 7 pm email Len Pohlar at pohlarlp@gmail.com for location
29th-31st Activities Committee Summer Kick-off

President's Corner

Bruce Simeone



Despite the unusually cold and snowy start of 2026, improvement efforts continue throughout the community. As the valve closure approaches, bids have been received for riprap installation in coves E, F, H, and I. The selected contractor will complete the work prior to the valve closure. With this effort, most LLPOA-managed properties are expected to be removed from the shoreline inspection list for 2026.

In addition to the rip rap project above, some of the other planned upgrades for 2026 include the following:

- Main valve engineering design is in process
- Gate house entrance sign and exterior rebuild since you can put your finger through the siding!
- Utility trailer and replacement of very old gas-powered handheld equipment
- Dredge Site Remediation to remove more sites from our permit.
- Security cameras

We have recently received several reports regarding issues with the member barcode reader system. Proper system performance depends on having a clean, undamaged, and unobstructed barcode displayed on the vehicle. Members with older or damaged barcodes are encouraged to visit the office for a replacement. We are learning that environmental factors such as sun glare and extreme temperatures also affect system reliability. Temporary measures, including a reader sun-glare cover, are being used. In addition, due to sensitivity to extreme cold, overnight pass-through gate access has been temporarily implemented during sub-zero temperatures. However, these are not permanent solutions. Replacement of the current system with a more reliable RFID system is planned as part of the capital asset program within the next few years.

LLPOA had a strong financial year in 2025. As projected at the economic funding changes Open Board Meeting, the Association funded \$10,000 per month into the Operating Reserve Fund throughout the year. This plan remains on track to reach the target range between the lower and upper guardrails by the end of 2026, providing approximately six months of operating expenses for unexpected needs.

As anticipated, funding for the Capital Asset Fund (CAF) will increase once the Operating Reserve Fund (ORF) reaches its target range. The CAF is projected to reach its target range by 2033. During this period, funds will be used to complete necessary capital upgrades while continuing CAF contributions.

Continuing the financial health theme of LLPOA, the board has managed to initiate and systematize the following over the last 5 years:

- A rigorous monthly financial review process.
- A solid budget process that utilizes a “zero base” strategy.
- An operating reserve (ORF) fund as mentioned above.
- A Capital Asset Fund (CAF) as mentioned above.

These systems guide our current operating expenses, protect those expenditures, and ensure we have the capital necessary to maintain our existing assets. Systems are now firmly in place and performing at a high level. In fact, external institutions we work with, including our banking partners, have noted that few small organizations—or even some smaller companies—don't have control and tracking systems as well-established as ours.

With this strong foundation in place, the Board is ready to move forward with the final component of our economic planning process: developing a Long-Range Improvement Plan (LRIP). The Board has asked Len Pohlar to form a committee representing all Lake areas to help identify, prioritize, and evaluate potential improvements, as well as to better understand the costs associated with new or enhanced Lake assets the community would like to see. Now that the holiday season has concluded and regular routines are resuming, residents can expect Len to begin reaching out for input and participation. Your involvement will be an important part of shaping the future of our Lake Community. This will be the committee, specifically asked for by you, to input on the future of the Lake design.

#LakeLoreleiStrong

Our "Secret Paradise" has been discovered!

I have Buyers in all price ranges contacting me daily!

With over 35 years of experience, I have the knowledge and compassion to help buyers and sellers make the right home ownership and investment decisions.

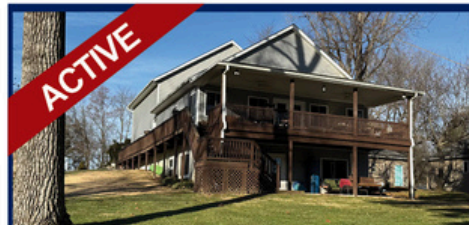
As an owner of waterfront property since 2002, I have a strong interest in the values and conditions of our community as well.

If I can assist you, please call me.

New Year ... New Options!



1027 LORELEI DRIVE



1065 BRUNSWICK DRIVE



1348 WAGNER DRIVE



1561 LORELEI DRIVE

Thinking of Selling?

I have qualified buyers looking for homes both on and off the water!

Thinking of Buying?

I have several new options that just maybe a perfect fit for you!

"Chris was very knowledgeable and responsive to my concerns and questions. The market was a bit sluggish when we listed but she marketed aggressively, and we found a buyer. I was impressed with her professionalism and listed a 2nd property with her. That property went under contract in just 2 days."

-CG



Chris Behm
Comey & Shepherd, REALTORS®
(513) 518-2353
chrisbehm1@gmail.com

Clubhouse Rebuild Project Update

Andy Poole

I am happy to report some significant progress. Four construction companies submitted very good bids for our project, and after a thorough review and several discussions with bidders, the CRP Lead Team (and BOT) has chosen Fedders Construction to do the work. We have a signed contract, and they are ready to get started. They will have a Superintendent on site every day during the project. Expect to see some fencing, equipment, and materials show up on the campus soon!

We also received a green light from the County and have the Building Permit to proceed with the construction.

The last piece of the puzzle is financing. We have a bank that is very interested in working with us on this Clubhouse Rebuild: First Commonwealth Bank. This is the same bank we are using for the Lakes Dredging, so we are both familiar with each other. We are currently waiting for a final loan agreement with them, and as soon as we get it signed, construction will begin!

John Wyman will be the leader of the Construction Phase, with Mike Wetzel, Chris Kwiatkowski, Todd Steinbrink, and I continuing to play other key roles. We have a solid Project Cost Management program, and we will monitor and manage Cost, Quality, and Schedule as we move forward.

There's light at the end of the tunnel! Hopefully we can use our Clubhouse again very soon!



Contact the entire Board of Trustees with one email address:

board.trustees@lakeloreleiOhio.com

| | | Term End | Email |
|------------------------|------------------|----------|--------------------------------------|
| President: | Bruce Simeone | 2027 | Bruce.Simeone@lakeloreleiOhio.com |
| Vice-President: | James Padgett | 2027 | James.Padgett@lakeloreleiOhio.com |
| Secretary: | Donna Murray | 2026 | Donna.Murray@lakeloreleiOhio.com |
| Treasurer: | Lee Duncan | 2027 | Lee.Duncan@lakeloreleiOhio.com |
| Trustees: | John Wyman | 2026 | John.Wyman@lakeloreleiOhio.com |
| | Mark Haberer | 2026 | Mark.Haberer@lakeloreleiOhio.com |
| | Kevin Hollstegge | 2028 | Kevin.Hollstegge@lakeloreleiOhio.com |
| | Andy Poole | 2028 | AndyPoole@lakeloreleiOhio.com |
| | Jim Rundo | 2028 | Jim.Rundo@lakeloreleiOhio.com |

BOT Mission Statement: The Lake Lorelei Property Owners Association Board of Trustees provides leadership and direction with fiscal responsibility for the necessary services to assure a safe, secure, and continuously improving environment for our LLPOA membership with integrity in accordance with our association's governing documents.

BOT Vision Statement: To preserve and expand our community, its lifestyle, and the Association's assets through effective, transparent, and fiscally responsible management.

"Gravel Guy" Trucking & Bobcat Service



Gravel, Soil, Sand, Mulch Delivered
Grading, Clean-up, Driveways, Heavy Use Pads,
Drainage Problems Corrected

513-519-4192

W. Stephens Cabinetry & Design

Fine Cabinetry and Countertops

Exceptional Design

Exceptional Value

Exclusively Yours



www.wstephens.com

859.331.8100

Lake Resident



TREE CARE

Commercial & Residential

STUMP REMOVAL
TRIMMING REMOVAL
LOT CLEARING

CERTIFIED ARBORIST

24-Hour Service

Earl & Clint Boyd
ISA Certified Arborist
Office: 937-393-4141
randy@a-1treeohio.com
A-1treeohio.com

Free Estimates

Fully Insured

Smarty Paints

NEED IT DONE YESTERDAY? I'M YOUR GUY



SEASONAL UPDATES
INTERIOR/EXTERIOR PAINTING & STAINING
INDUSTREAL & MARINE COATINGS
GARAGE FLOOR COATINGS
CARPENTRY
DECKS

CALL TODAY TO GET YOUR FREE ESTIMATE

513-675-0358



Discover the Impact You Can Make: Join the Lake Lorelei Board of Trustees

Cindi Wetzel

Often, we hesitate to step into leadership roles because of misunderstandings or doubts about what's involved. But at Lake Lorelei, serving on the Board of Trustees is truly about community service, collaboration, and making a meaningful difference – and it's an experience worth considering.

What Does It Mean to Be a Trustee?

Becoming one of nine trustees is more than just a position: it's a commitment to shaping the future of our beloved lake community. It's a challenge that calls for listening, understanding, and working together to serve the best interests of all property owners. And it's a privilege – an opportunity to influence how Lake Lorelei grows, improves, and continues to be a safe, vibrant place for generations to come.

Why Consider Running?

If you have strong communication skills, a knack for creative problem-solving, or enjoy working collaboratively with others, you have qualities that can benefit our community. Trustees bring diverse perspectives and talents, and your unique skills could be just what is needed to tackle upcoming projects or address ongoing needs.



Your Skills Matter to Our Lake Community

Think about the talents and expertise you already possess:

- Do you have knowledge of water quality and lake maintenance?
- Are you experienced in construction or infrastructure development?
- Do you have banking, financial, legal, or property management skills?
- Can you contribute to policy writing and strategic planning?
- Are you a visionary thinker with great ideas for the future of our lake?

If you answer "yes" to any of these questions, you could be a valuable addition to our Board of Trustees.

Shaping the Future

Serving as a trustee is a rewarding way to give back, connect with neighbors, and have a real impact on our community's future. Your involvement can help ensure Lake Lorelei remains a beautiful, thriving place to live and enjoy.

No matter your background or experience, your voice and vision are valuable. Consider learning more about what being a trustee entails and stepping up to serve. Together, we can continue to build a stronger, healthier, and more connected Lake Lorelei.

Thank you for considering this important role – **your community needs you!**

Lake Lorelei Property Owners Association
615 Lorelei Dr. Fayetteville, OH 45118
(513) 875-3435
Email: Director@lakelorelei.ohio.com



2026 APPLICATION FOR TRUSTEE

Requirements:

A Candidate must be a Member in Good Standing.

Candidates must submit this application and a head shot photo to the LLPOA Office no later than **5PM on March 15, 2026.**

In a brief statement (please attach), outline your qualifications to be a Trustee.

- Include: your occupation, skills, major concerns, goals for Lake Lorelei, and any other relevant information you consider important.

Your application must be endorsed by three Members in Good Standing. Applications are submitted to the nomination committee for the ballot.

DATE: _____

NAME: _____ Lot #: _____

ADDRESS: _____

CITY/ STATE/ ZIP: _____

Candidate Signature: _____

Endorsements:

1. _____ Lot #: _____

2. _____ Lot #: _____

3. _____ Lot #: _____

PLEASE PROVIDE YOUR STATEMENT ON A SEPARATE SHEET

LLPOA Introduces Clubhouse Assessment Pre-Pay Option

Lee Duncan



The Board of Trustees is pleased to announce a **new pre-pay option** for the Clubhouse Assessment, designed to offer members added convenience and flexibility.

Under this option, members may choose to **pay their remaining Clubhouse Assessment obligation in a single lump sum**, rather than continuing with semi-annual payments over time. This option does **not change the total assessment amount**, but it allows interested members to simplify their finances by having the obligation fully satisfied at once.

How the Funds Are Handled

All prepaid funds will be placed in the Clubhouse Fund, just like all the semi-annual payments. The money in this fund is segregated from the LLPOA general operating funds and may only be used for Association purposes related to the Clubhouse, including debt service.

This structure ensures transparency, financial discipline, and protection of the funds while allowing them to support the project efficiently.

What Happens If You Sell Your Property?

If a property is sold where the Clubhouse Assessment has been pre-paid, the portion of the assessment due in the period **after** closing is **reimbursed** to the seller by the buyer at closing, as reflected on the ALTA settlement statement. The LLPOA will help the buyer and seller determine assessment reimbursement amounts when requested by the title company.

Next Steps

Participation in the pre-pay option is **entirely voluntary**. Members who are interested can obtain the **Clubhouse Fund Pre-Pay Agreement** from the LLPOA office or contact the Lake Director for additional details. This option is one more way the Association is working to provide flexibility, clarity, and responsible stewardship as we move forward with the Clubhouse Project.

Why Consider Pre-Paying?

- **Peace of mind**– The assessment is fully paid. Your semi-annual dues will be less since this charge is no longer included.
- **Helps Lake Lorelei**– Having some Members pay all their assessment up front helps the Lake keep a higher balance in the Clubhouse Fund Account, which
 - increases the confidence of our lender
 - helps ensure that LLPOA has ability to always pay our loan payments
 - earns interest that helps the lake cover some Clubhouse costs

Tom Kuebler

Carpet & Upholstery Cleaning

Over 30 years of experience



*Deep Steaming
Truck-mounted equipment*

**1 Room + Hall \$50, 2 Rooms + Hall \$60
Any Five areas \$90
Sofa \$50 · Loveseat \$40 · Chair \$30**



*Now offering carpet and upholstery cleaning for
RV's · Motor Homes · Campers · Car Interiors*

Call 513-444-4146

**"I clean each carpet like it is my own."
All work guaranteed**

Thunderbolt Services, LLC



**Doug Schmees
513-827-1436**

Your full time lake resident who is here to help you get the most of your free time at the lake.

- Lots Mowed/Bush Hogged
- Residential and open lot mowing
 - Brush Removal
 - Weed Trimming



- *Retired mechanic to complete your boat/PWC repairs and cleaning*



Sea Ray
CINCINNATI



**We have a great selection of
Lake Lorelei approved boats**

Sea Ray Bayliner Moomba Harris

Call today for your personal demo.

4811 Kellogg Ave Cincinnati, OH 45226
513-871-5555 www.searayofcincinnati.com

Building a Long-Range Improvement Plan for Lake Lorelei Community

Len Pohlar

Defining a Path Forward!

This is the second in a series of articles to introduce the idea of building a Long-Range Improvement Plan (LRIP) to help move us into a better future. I refer you to the article in the last Legend in case you missed it. By now, you may have already seen some posts on Facebook. I urge you to chime in. **We want your input.**

In the first article I used a 3-part motto that can serve as a guide for what might be possible, especially for the more difficult projects we might choose to tackle, like a restaurant, thriving Farmer's Market, or a modernized Marina area.

A Dream with a Date is a Goal: If you cannot visualize it, you cannot make it happen. If you do not put a stake on a timeline in the future, human nature says we will all procrastinate as we deal with life's many challenges. So, this is where we must start. I will be seeking your ideas so we can visualize the better result and set a stake in time for those ideas with community support (Remember: No Support = No Results!)

A Goal with Steps is a Plan: A goal cannot be wished into existence. Those who reach that goal must take positive steps in a manner that is achievable. So, we must define those steps and build a plan. Only then can we ask for the hard part: Designs, Equipment, Labor, and Material.



We will need funding, but each goal will have its own funding needs, and the plan must describe how we plan to climb that important mountain. Without a plan there will be no funding regardless of the source. For the record: I personally never plan to ask for a member assessment to pay for any of this. That is my personal goal in this process. (Remember: No Support = No Donations!)

A Plan with a Schedule becomes a Reality: A plan may have a target date for completion but without a date for that first step, that first step will never happen. Once an overall plan is defined (including the funding approach) and the task is understood, a schedule can be proposed and the entire plan approved. That is the day we get moving so we can celebrate the creation of one part of a better community. (Remember: No Support = No Action)

To achieve our goals, we must focus on clear areas that have meaning to our community. We are establishing clear areas in which improvement ideas can find a home:

1. **Physical Areas** with defined needs specific to that geographic area
2. **Functional Areas** that make our life better, such as handicap access everywhere it is needed, security, communications, and social media.
3. **Planning Areas** to tackle complex integration issues, such as Clubhouse Campus integration, Marina area integration, and Front Entrance modernization. Our recent activity on Clubhouse Campus planning was a great start.

We must understand the legal, political, engineering, and fiscal challenges each area faces. Then we can propose ideas that gain support in the community. Where we have support, we can build a plan with community input and socialize the results all along the way. Expect regular reports here in The Legend.

What do we need NOW to move forward?

Leadership Team: Initially chaired by myself until a proper charter is created to define our relationship with the LLPOA BOT and our delegated authorities. I have been contacting some of you directly, but I want to hear from you as well.

Identify Yourself NOW as a member interested in becoming an Area Coordinator in a specific area of interest to you or to become a direct member of the team. **Call me and let's talk!**

Start the dialog by getting all the ideas on the table. Expect much of this dialog to initially take place in our Facebook groups. You know the drill! Like, share and subscribe!! Leave a comment and no smack in the chat! Be kind to all online!

Our first presentation to the community is **due on/about Oct 15, 2026**, and every year thereafter. This is an annual process that will grow over time.

Time to get out of hibernation and start moving forward. Let's do this!

CONTACT ME IN WHATEVER WAY YOU CHOOSE!

Knock on my door: 544 Lorelei Dr

Call or Text: 937-689-3712

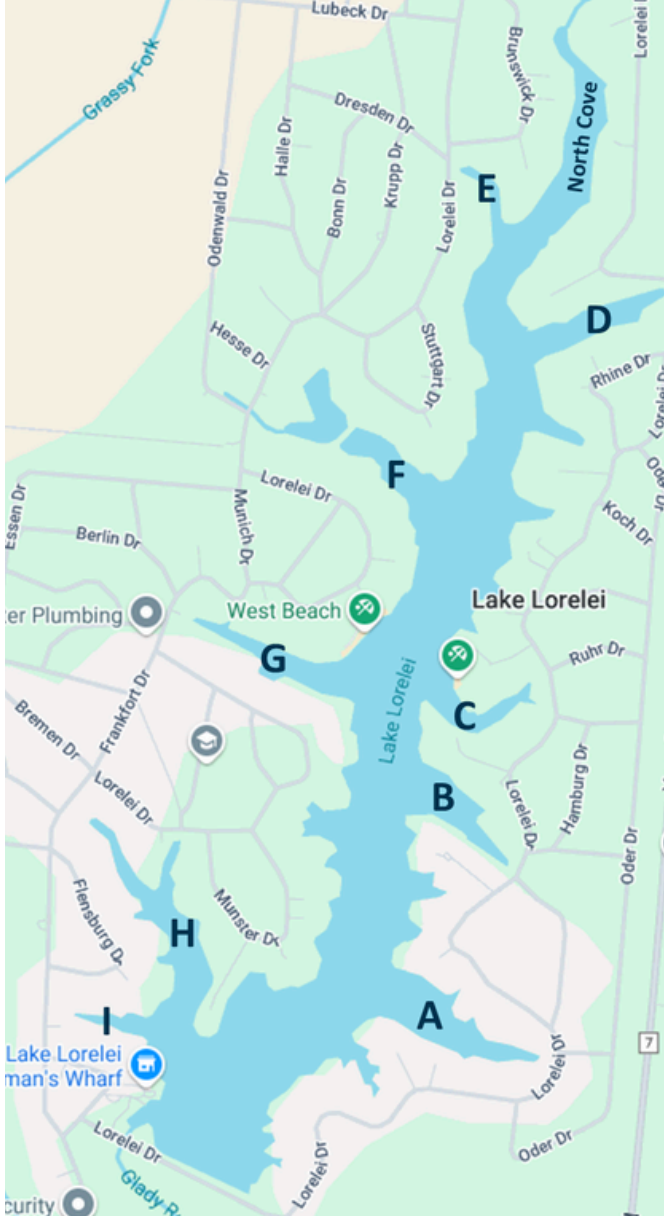
Email: pohlarlp@gmail.com

Telegram: @pohlarlp

Lake Safety Tips for a Safe and Fun 2026 Boating Season

Andy Poole

As we get ready for another great boating season, the Board of Trustees is making Lake Safety a top priority for 2026. Our goal is simple: **Everyone enjoy the lake and everyone get home safely.** Whether you're a longtime boater or new to the water, these guidelines will help keep our lake safe for all.



- **Know and Follow the Rules**- Both the Ohio Dept of Natural Resources (ohiodnr.gov) and the LLPOA (lakelorelei.com) have established boating rules to protect everyone on the water. Following these guidelines is one of the most effective ways to prevent accidents.
- **Give Stationary Boats Plenty of Space** - Even if things look calm, people may be swimming or getting on/off a boat. Passing too closely creates large wakes that can rock a stopped boat and injure passengers. When in doubt, steer wide—the other captain will appreciate your courtesy.
- **Never Drive Directly Behind a Boat Towing a Rider** - When a boat is towing, the captain is monitoring the rider constantly. Following too closely creates a dangerous situation if the rider falls. Always assume a skier, tuber, or wakeboarder could fall at any moment. Don't drive right behind a boat and leave enough distance to react safely.
- **Maintain Your Line When Passing** - If you pass another boat, stay in your lane and avoid cutting sharply in front of them. Sudden moves reduce reaction time and can create hazardous wake conditions.
- **When in Doubt, Slow Down or Stop** - If traffic seems unpredictable or you're unsure of another boater's intentions, it's perfectly acceptable to ease off the throttle and let things settle. Just like in a car, check behind you first to ensure other boaters can react. If needed, pull into a No Wake Zone momentarily to regroup.
- **If You See Something, Say Something—Kindly** - We're a community, and we all share responsibility for keeping the lake safe. If you see unsafe behavior, consider politely talking to the person involved. A friendly, respectful conversation is often appreciated, especially when the goal is keeping everyone safe.

[Let's Make 2026 Our Safest Season Yet](#)

Thank you for doing your part to make our lake a fun, welcoming, and safe place for all. With awareness, patience, and respect for fellow boaters, we can all enjoy a fantastic season on the water.

Lake Lorelei

**SPRING IS APPROACHING! THINKING ABOUT SELLING?
GIVE ME A CALL TODAY!**

"Marcia was an outstanding agent—responsive, knowledgeable, and flexible. As first-time home buyers, we especially appreciated how clearly she guided us through every step. She was kind enough to work around our busy schedule and made the entire process smooth and stress-free. We are truly grateful for her hard work and highly recommend her." - S & J Solomond



ACTIVE

16 Lorelei Drive



SOLD

1398 Lorelei Drive



SOLD

455 Kleist Drive

LOTS FOR SALE

351 Leipzig Dr
841-843 Krupp Dr
1431 Oder Dr
1564 Fredrickstrasser Dr



**FULL-TIME LAKE RESIDENT WITH OVER
240 LAKE COMMUNITY SALES**

Marcia Greenwald

AT HOME WITH DIVERSITY CERTIFICATION, SRS
EXECUTIVE SALES VICE PRESIDENT

(513) 503-1573

mgreenwald@sibbcycline.com

www.sibbcycline.com/mgreenwald



This is not intended to be a form of solicitation if you are working with another broker.
Data: Cincy MLS: 01/26-02/26. All brokers. 

Fishing Club

Tom Iles

Tuesday Evening Tournament Rules

- Ties will be resolved in the following order:
 - most fish
 - the largest fish
 - then a flip of a coin
- A limit of 5 bass per person, at least 12 inches long, measured with the mouth fully closed
 - 10 bass per boat
- Official time will be kept. Chip must be hung up before the official quitting time.
- All fish must be brought to the scales in a weigh-in bag with sufficient water.
- All boats must return to the check-in site for the weigh-in.
 - Teams or individuals late for the weigh-in will be penalized 1 pound per minute for up to ten minutes, then disqualified.
- No dead fish will be weighed in.
- All property owners must have a 25-26 sticker on their boat.
- We understand and agree that the Lake Lorelei Property Owners Association, Inc., its members, trustees, and other participants are waived of any responsibility for damages, injury, or loss incurred during this tournament.
- No live bait is allowed.
- Be at the marina at 5:30!!!

**1st and 3rd Tuesdays of the month from
April - September**

Entry

Entry Fee: \$25.00 Per Team

Individual Fee: \$25.00

\$10.00 Of Entry Will Go Toward Big Bass

Prizes (number of boats competing)

- 5 or Less 1st Place 100%
- 6-8 2 Places: 70% & 30%
- 9+ 3 Places: 50%-30%-20%

Spring Tournament- April 4th, 7 am - 3 pm

Kids' Tournament- Sunday, July 19th;

- Sign-ups @ 5:30 pm, Fishing 6-8 pm

Night Tournament- August 15th; 12-8 am

Fall Tournament- September 26th; 7:30 am -3:30 pm

ZUGG & Sons Repair SVC. LLC *car care center*

The Next Generation of Automotive Service
Specializing in Automotive Repair

COMPUTERIZED DIAGNOSTIC EQUIPMENT

513-875-2565

4296 St. Rt. 131, Fayetteville

Just 6 Minutes East of Lake Lorelei

Hours: Monday-Friday 10:00-6:00

SA

SOERGEL & ASSOCIATES, INC.

EDWARD SOERGEL
Certified Employee
Benefits Specialist

INSURANCE CONSULTANTS
INDIVIDUAL AND GROUP BENEFITS
HEALTH, LIFE, MEDICARE
SUPPLEMENTS, ANNUITIES



1722 Lorelei Drive
Fayetteville, Ohio 45118
513 739-6900 • edsoergel1@gmail.com

All About You

Hair Salon & Day Spa, LLC.



Pedicure Special 10% OFF With JESSICA

**19426 Vera Cruz Rd
Fayetteville, OH 45118
513-875-3000**



www.hudepohlheatandair.com

(937) 446-4200

E mail: hudyhv ac@gmail.com

24 Hour
Emergency
Service

State
License
31213

** A Professional is Not Satisfied Until You Are **

Geothermal Specialist

Sales • Service • Equipment • Replacement

SERVICES

- Heating
- Venting
- Air Conditioning
- *Geothermal Specialist*
- Heat Pumps
- Oil
- Gas

PARTS & ACCESSORIES

- Programmable
Thermostats
- Humidifier
- High Efficiency
Air Cleaners

Commercial • Residential



**CT EXCAVATING
LLC**

(937) 515-1441

CTEXCAVATING@GMAIL.COM

Licensed and Insured

SERVICES

- Food Plots
- Culverts
- Driveways
- Land clearing
- Tree and Stump
Removal
- Drainage
- Ditching
- Small Hauling
- Small Demo
- Grading
- Pond Rehab
- Small Ponds

Community Enhancement Volunteers

TJ Jackson

NEIGHBORS!!!!!! Hopefully, you made it through this crazy winter season safely and now have a new focus for a GREAT spring and summer AT THE LAKE.

Please mark your calendars for the next LLPOA Beautification and BBQ (B&B). We are targeting Saturday, May 16. We will work on community enhancement projects from 9 am to noon (ish), then have a delicious lunch together. Please plan on joining us. We have fun, get a lot done to improve things around the community, and enjoy visiting with our neighbors in the process.

The Community Enhancement Volunteers Committee stands down for a few months during the winter, but will be back to meeting on the third Thursday of each month at 7 pm starting in March to plan for the projects that we want to accomplish in 2026. We will publicize the meeting locations as they get closer on the calendar.

We communicate via email to let folks know what is coming up and what has been accomplished. It is a great group of volunteers. We are always looking for participation. Even an hour or two can have a positive impact. If you would like to be included in the notifications, OR if you have suggestions for future projects, please email Len Pohlar at pohlarlp@gmail.com. You can view pictures of several of our past projects on our Committee page on Lake Lorelei's website. <https://lakelorelei.com/community-enhancement>.

Think SPRING neighbors!!!



**ONE PERSON CAN
MAKE A DIFFERENCE —
LET THAT PERSON BE
YOU!**



www.OBHrealty.com

HELLO LAKE LORELEI

Looking to build or buy a new home in the wonderful community of Lake Lorelei? Check out our current lots and floor plans available.

Lots available

- 1676 Oder
- 220 Schlitz
- 742 Odenwald
- 236 Schlitz
- 235 Schlitz
- 781 Kassel

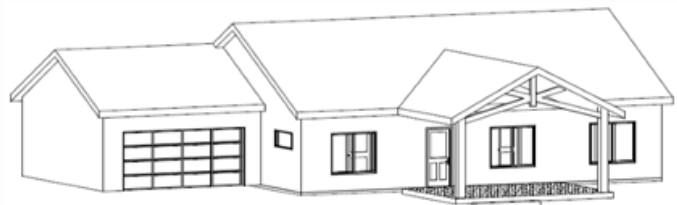
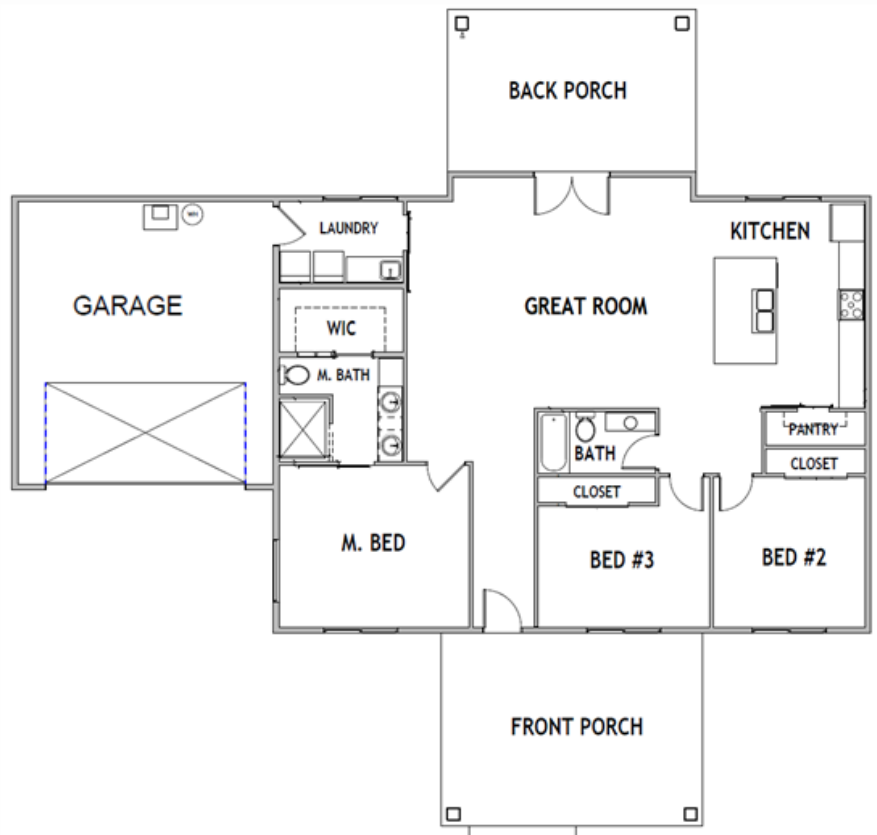
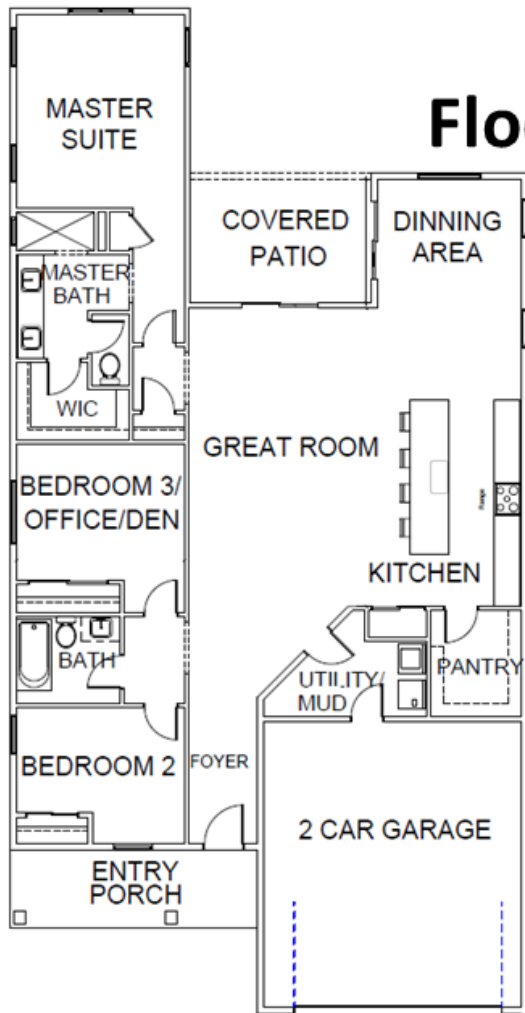


SOLD

185 Dortmund

\$305,000

Floor Plans Available



2026 CALENDAR OF EVENTS

Summer Kickoff

Cochairs are Melissa Basile, Sharon McCormick and Meg Dinardo.....contact them if you would like to help with the Amazing Golf Cart Race or any of the Saturday tournaments.

Poker Runs

Cochairs are Cindi Wetzel, AnnMarie Rundo, Jenny Fehr..Hosting a Dock is a lot of fun and a great way to meet your LL neighbors. Contact us to host a Dock.

Bluegrass Concert

Chairperson is Ashley Wall... Lots of great ideas for this day of music. Watch for special announcements and updates for more information. Contact Ashley if you know a band or would like to help with ideas.

LakeToberfest

Cochairs are Jenny Fehr, Bridget Petric, Mark Haberer... Come celebrate our German roots with great food, challenging games, music and lots of fun.



Events & Chairpersons for 2026

Summer Kickoff — May 29 & 30

Friday Night—Amazing Golf Cart Race & Ice Cream Social

Saturday—Fowling Tournament, Cornhole Tournament, Pickleball Tournament

Poker Runs— June 13th & August 8th

Hosting a Dock is lots of FUN!

Summer Bluegrass Concert— July 18th

LakeToberfest— September 19th

Halloween Trunk or Treat— Cochairs

AnnMarie Rundo, Marcia Greenwald, Cindy Williams

Tailgate Party—Cochairs Mark Haberer and Jeff Weir

Christmas with Santa—Cochairs AnnMarie Rundo and Bridget Petric

New Years Eve In the Clubhouse

READY TO SELL?

SMART MOVES START WITH ME!

LOVING LAKE LORELEI SINCE 2018

REALTOR

LAKE LORELEI RESIDENT

COLDWELL BANKER REALTY

513-314-1391

9321 MONTGOMERY RD STE C

CINCINNATI, OH 45242

WWW.JENNYFEHR.COM



Adam's Attention to Detail

OUR SERVICES

- Boat Detailing
- Color Restoration
- Power Washing

FREE ESTIMATES!

Adam Warner
(859) 823-9090

We Come to You

Lake Lorelei
Resident



PH: (717) 725-7687 Fax: (717) 610-5940
Email: Altassewing@jbyfax.com

Specializing In:
Window Treatments,
Outdoor Cushions
Slip Covers, Upholstery,
Boat Covers and Cushions



Gardener's Corner

Gary Hetzell

As we get closer to spring, let's look at some things that need attention for a healthy garden.

1. Amending the soil with compost or organic fertilizer will get your flowers and veggies off to a healthy start. Each year, your plantings need a lot of energy to produce gorgeous flowers and abundant produce, so amending the soil with fertilizer or compost replenishes the soil with the energy the upcoming year's plants need to thrive.
2. Spring is a great time to plant trees and shrubs since the soil temperatures are cooler, which is also the case if you want to wait till fall. Please don't try to plant large shrubs or trees in the summer; there are too many factors against you, including heat. Are you going to water daily? I didn't think so, Spring or fall folks!!
3. Mulch after planting conserves moisture and keeps weeds at bay.
4. Spring is a good time to take on structural projects; it's cooler, and you will love the results come mid-summer.



5. To trellis or not to trellis certain veggies, trellising veggies has many advantages. Getting the produce off the ground deters rot and critters getting to them. Air flow is very important to preventing disease, and the last advantage is that, according to Bert, it makes harvesting much easier, standing up and not bending over.
6. This is the best time to divide perennials, take a spade to cut down into the root system, and make sure to get as much root mass as possible. Hydrangeas love spring dividing.
7. Cleaning up the flower and vegetable beds is probably the most important task you can do to ensure a great disease-free growing season. Old leaves and debris can cause issues if not collected and disposed of in your garbage can. Never put this kind of waste in your compost pile.

Anyone wanting to get into gardening for vegetables or flowers might have questions on how to get started. Please feel free to stop by 602 Lorelei Dr., and we can chat, or I can come to your residence to see your situation.

After this winter, I'm pretty sure we are all ready to get to spring!!

Women's Club Day at John's Flowers

What: A portion of sales will be donated to the Women's Club
When: April 25, 9 am-4 pm
Where: 19381 Howard Rd, Fayetteville, OH (just off Rt 68)

Women's Club Yard Sale

May 2-3, 2026

9:00 am - 4:00 pm

\$10 Permit Required

Applications are available in the
Office, Gatehouse, and Marina.

Members Only Preview

May 1st 6-8pm



John's Flowers

**Spring is officially here!!
Come see us for your planting needs**

2026 Proven Winners!

Large assortment of Annuals & Perennials

Trees ~ Shrubs ~ Bedding

Mulch (Bulk & Bagged) ~ Top Soil

Delivery Available



Nursery & Greenhouse

513-875-3400

Located on Howard Road ~ 1 mile south of Fayetteville
off RT 68

Monday-Saturday 9AM-7PM Sunday 10AM-4PM



Why isn't Hawaii just one long island?

Lee Duncan

As I sit down to write this and I look out at our completely frozen lake, I could briefly forget that it's entirely man-made. But then I remember that fifty-eight years ago, Glady Run was dammed, the water rose, and a lake appeared—followed by decades of us working very hard to keep it from doing whatever it wants. The rip-rap along the shoreline is the clue: big rocks, carefully placed, periodically rearranged by water that remains unimpressed by our efforts. It's less shoreline and more of an ongoing negotiation.

That contrast was on my mind during our recent trip to Hawaii, where Mary Lynn and I discussed "Why isn't Hawaii just one long island?" I've always known the basics. The Hawaiian Islands formed

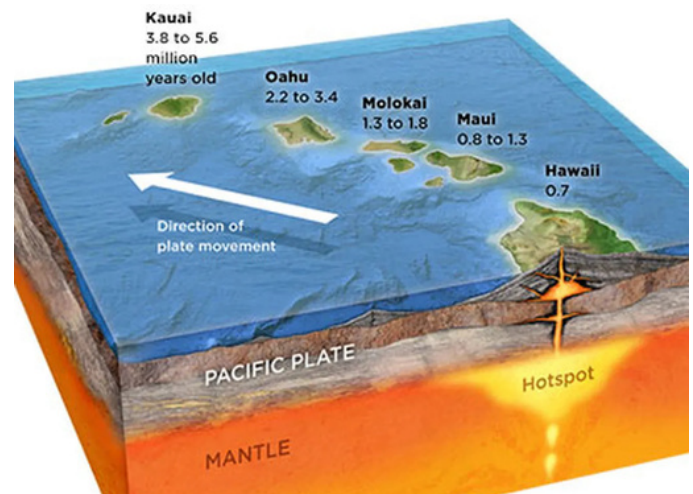
as the Pacific plate slides slowly over a stationary hot spot deep beneath the Earth's crust. Magma rises, volcanoes grow, land appears. Simple. Elegant.

We've been fortunate to visit several of the islands over the years. Thanks to my former life as an airline pilot—a benefit that conveniently did not expire with retirement—flying for free has made island-hopping almost too easy. During our visits a pattern has become impossible to miss. The Big Island feels raw and young—vast stretches of black and rust-colored lava, sharp-edged and spare, like the place is still waiting for landscaping. While we were on Kauai this last trip, the Kilauea volcano was actively erupting back on the Big Island, a clear sign that construction is ongoing. Move northwest, though, and everything changes. Maui softens. Oahu grows greener and more layered. And then there's Kauai—deeply carved, lush, and to my eye, almost unfairly beautiful.

That westward progression is the answer. Each Hawaiian island begins as a massive volcano rising from the ocean floor. For a while, magma supply is strong enough to keep building land in roughly the same place. But the Pacific Plate never stops moving—about as fast as your fingernails grow. Eventually, the volcano drifts far enough away that eruptions slow, then stop. Rain, rivers, wind, and waves take over, carving valleys and steepening cliffs, all while the immense weight of the island itself causes it to slowly sink. That same Pacific Plate keeps going; when it meets North America along California, it doesn't make volcanoes at all, but grinds sideways instead, releasing stress as earthquakes. Same plate. Very different outcomes.

Which brings me back to our lake. At just 58 years old, this shoreline is still under active supervision. We armor it with stone, fix what storms undo, and politely insist that the water stay where we put it. Left alone, it would happily rearrange things to its liking. Hawaii shows what happens when nature gets unlimited time and no maintenance budget.

Mother Nature, it turns out, doesn't attend shoreline committee meetings. Apparently, she prefers to **go with the flow**.



References:

U.S. Geological Survey (USGS)- "The Hawaiian Hot Spot" – Clear explanations of island formation, plate motion, and volcanic stages.

Smithsonian National Museum of Natural History- Plate Tectonics & Hot Spots – Excellent visuals and plain-English geology.

Hawaiian Volcano Observatory- Ongoing updates and background on Kilauea, Mauna Loa, and the life cycle of Hawaiian volcanoes.

Donna Woods
Notary

622 Manheim Drive,
Fayetteville, OH 45118
Call or Text: 513-310-4820

Valid ID must be shown for
the person to be Notarized

Absolutely no Pre-Signed
documents can be Notarized

Jude Bears
By Jude Lambert, Lake Resident
Memory & Theme Bears
Making memories last forever...

513-490-4175
facebook.com/judebears



Fayetteville Hardware & Supply LLC



**HARDWARE & HEAVY DUTY TRUCK PARTS
NEW & USED EQUIPMENT**

513.935.3030 | 513.935.3040
19535 U.S. 68 FAYETTEVILLE, OHIO 45118

Handyman Services
Doug Carney
513-418-7415
dougarthurcarney@gmail.com

| | |
|-----------|--------------------|
| Decks | Interior Finishing |
| Carpentry | Electrical |
| Flooring | Plumbing |



Fisherman's Wharf

At Lake Lorelei
513-875-3332

Owner/Operators
Barb and Bob Kiley
LLPOA Members since 1970

Gift Certificates Available

ATM
INSIDE

BEER
BAIT
ICE
GAS

Ohio Lottery
& Instant Tickets



Lake Lorelei Water Quality Committee



Summer Fun for Your Children or Grandchildren 8-16 Years Old Can Help With Lake Water Testing Contact Cindi Wetzel—513-505-1077

As I was researching lake water quality information, I ran across an interesting article from Science Olympiad, an organization I once was involved with. 2026 has a freshwater component to its competition—an exciting opportunity for students to learn more about our planet's vital ecosystems.



Encouraging students to be curious and respectful of the world they will inherit has always been important to me. Getting involved in water quality testing is a hands-on way for young people to see how they can make a real difference in our community and environment.

If your children or grandchildren would like to help with water quality testing this summer, please contact me! We conduct several different types of tests throughout the season, including monitoring pH levels, clarity, temperature, and dissolved oxygen. It's a great way for kids to learn about science firsthand, enjoy the outdoors, and contribute to preserving the beauty of Lake Lorelei.

Together, we can inspire the next generation to become stewards of our precious natural resources. I look forward to hearing from you and welcoming young explorers to our water testing program!



Lawn, Garden, Farm & Motor Sports

664 W Main St., Blanchester, OH 45107

Phone: 937-783-8330

Monday-Friday; 9 am to 5 pm

Saturday; 9 am to 12 pm

Selling the area's largest selection of parts, accessories, and equipment.

BEARER OF THIS CERTIFICATE

10% DISCOUNT ON THE PURCHASE OF ONE ITEM*

*Merchandise, Accessory, or Part

Not valid with other offers or discounts. One certificate per visit. **Does NOT include sale items, whole goods, labor, or pickup/delivery.

This offer expires: June 30, 2025

Financing Available / Pick up & Delivery Available

www.caplingersalesandservice.com

EMAIL: caplingersales@gmail.com



LIVE WIRE

ELECTRICAL SERVICES LLC

513-375-1469

- ⚡ Service upgrades
- ⚡ Surge protection
- ⚡ Whole house generators
- ⚡ Sub panels
- ⚡ Lighting
- ⚡ EV chargers



ROUTE 50

VETERINARY CARE

513-309-5211

info@route50vet.com

41 Lindsey Dr, Unit C, Fayetteville OH 45118

Providing high quality veterinary, chiropractic, and acupuncture care for dogs, cats, and horses.



LLPOA Financial Summary

Cash Modified Basis

INCOME & EXPENSE SUMMARY YTD to Dec 23, 2025

| Income | | Expenses | |
|--------------------------------|------------------------------|--|----------------------------|
| Auto Decals | \$29,205.91 | Administrative | \$41,372.98 |
| Boat Inspection/ Decals | 35,333.03 | Community Events/ Projects | 46,551.73 |
| Building Permits | 33,142.71 | Computer, Internet, & Subscriptions | 32,293.05 |
| Clubhouse Assesment | 90,884.01 | Insurance | 43,640.25 |
| Collection Fees | 4,200.94 | Lakes Fund Loan & Maintenance | 218,719.44 |
| Community functions/ Projects | 54,646.24 | Lake Maintenance | 13,275.00 |
| Contributions Received | 6,200.00 | Legal Fees | 16,945.89 |
| Dock Rental | 14,040.00 | Merchant Service Fees | 24,551.67 |
| Dues & Services | 592,759.21 | Personnel Wages | 187,947.95 |
| Fines | 1,400.00 | Payroll Taxes | 51,250.74 |
| Initiation Fees | 82,796.69 | Property Tax | 16,888.72 |
| Interest Earned | 28,850.51 | Repairs & Maintenance | 53,986.29 |
| Lake Maintenance Fund | 234,393.78 | Roads Repair & Maintenance | 285,864.24 |
| Mowing and Chipping Fees | 8,865.05 | Security, Outside Services | 8,491.60 |
| Miscellaneous | 3,712.06 | Spillway & Valve Study | 30,104.33 |
| Rental Income | 4,300.00 | Subcontractors | 20,385.99 |
| Road Assessment Income | 201,240.04 | Utilities | 27,827.17 |
| Sale of Lots & Equipment | 6,129.58 | Clubhouse Reno Project | 131,733.07 |
| Total Income | <u>\$1,432,099.76</u> | Contribution Capital Asset/ Ops Reserve | 120,000.00 |
| | | Total Expense | <u>1,371,830.11</u> |
| | | Other Income- Insurance Clubhouse | 56,975.31 |
| | | Net Income | <u>\$117,244.96</u> |
| RESERVE ACCOUNTS November 30th | | Information is based of the most current data available. Detailed reports are available in the Lake Lorelei Office. | |
| Operations Reserves | \$324,598.11 | | |
| Capital Asset Fund | 242,044.23 | | |
| Roads Reserve (Money Market) | 257,438.78 | | |
| Total | <u>\$824,081.12</u> | | |

Interested in advertising in The Legend of Lorelei newsletter?

- Artwork can be emailed to thelegend@laklorelei.ohio.com
- PNG, JPG, MS Publisher and Word files accepted
- We offer a 10% discount when paying for a year (6 issues) in advance
- Online payment options available

| Size | Dimension | Issue Rate | Annual Rate |
|---------------|------------------------------|------------|-------------|
| Business Card | 3 - 3/4" wide by 2-1/4" tall | \$25.00 | \$135.00 |
| 1/4 Page | 3 - 3/4" wide by 4-5/8" tall | \$45.00 | \$243.00 |
| 1/2 Page | 7-5/8" wide by 4-5/8" tall | \$80.00 | \$432.00 |
| Full Page | 7-5/8" wide by 9-1/2" tall | \$150.00 | \$810.00 |

Advertising Deadline for the May/June Legend is April 22, 2026

STORM DAMAGE?

Know your rights.

A storm is devastating, and insurance claims can be confusing. Insurers often underpay or deny claims, making it crucial to understand your policy and damages.

You may be entitled to:

- ✓ *Full repair costs for your home*
- ✓ *Payment for damaged belongings*
- ✓ *Compensation for lost rental income*
- ✓ *Coverage for temporary housing & storage*
- ✓ *Funds for debris removal, code upgrades & more*

We help with contractor estimates, inventory lists & claim maximization.

Don't rely on the insurance company's recommendations.

CALL NOW for a FREE consultation and restore your life.



The Legend of Lorelei
PO Box 363
Fayetteville, Ohio 45118

PRESORT STD
U.S. POSTAGE
PAID
CINCINNATI, OH
PERMIT NO. 770

Article and Advertising Deadline for the May/June 2026 Legend is April 22, 2026

Email: TheLegend@LakeLoreleiOhio.com

Have Something to Say?

The Legend wants to hear from you!

Send a Letter to the Editor or write an article. Your suggestions and ideas are always welcome! We will do our best to publish all appropriate content.

The Editor reserves the right to make minor copy-editing changes, per accepted standards for punctuation, spelling, capitalization and usage. The Editor may adapt any submitted copy to conform as needed with the current publication layout and design standards. Anonymous submissions will not be published.

Community Contacts

| | |
|-----------------------------------|--------------|
| Brown County Animal Shelter | 937-378-3457 |
| Brown County Health Department | 937-978-6892 |
| Brown County Sheriff's Department | 937-378-4435 |
| Brown County Veteran's Service | 937-378-3155 |
| Bureau of Motor Vehicles | 937-378-4779 |
| Duke - Power Outage | 800-543-5599 |
| Duke Energy Customer Service | 800-544-6900 |
| Fayetteville Fire Department | 513-875-2202 |
| Fayetteville Public Library | 513-274-2665 |
| Fayetteville Schools | 513-875-2423 |
| Fayetteville-Perry Sewer District | 513-875-4600 |
| Post Office - Fayetteville | 513-875-3740 |
| Rumpke Customer Service | 800-828-8171 |
| Spectrum Customer Service | 855-707-7328 |
| Western Water | 513-722-1682 |

Disclaimer

Any opinion expressed in The Legend reflects only the opinion of the author and not the LLPOA, the Board of Trustees, the staff of The Legend, or any other person.

Advertising in The Legend is not an endorsement of products or services. The Legend staff reserves the right to reject the submissions for publication.

Mission Statement

The Booster Club was organized in 1968 to provide information on official and social activities of interest. The Legend is not an arm of the Board of Trustees but an independent publication approved by the Board of Trustees and is committed to serving the members of the Lake Lorelei Property Owners Association.

The Legend is a private newsletter funded for Lake Lorelei through commercial advertisers.