

## Increasing Awareness of Buttons with a Quick ABC Analysis from MC.9

The tiny goal of this article is to get you to understand how much information is in standard SAP and how you can find it. To do this I encourage you to explore SAP and click buttons. For some reason people do not do this as much as I would think they would. To demonstrate this we will show an ABC analysis from SAP.

Go to MC.9 and select a plant.

**Material Analysis: Stock: Selection**

SelectVers. User settings Standard drilldown

**Characteristics**

Plant	XXXX	to		[Button]
Storage Location		to		[Button]
Material		to		[Button]
MRP controller		to		[Button]

**Material Groupings**

Material Type		to		[Button]
Material Group		to		[Button]
Valuation Class		to		[Button]

**Period to Analyze**

Month	10/2019	to	12/2019	[Button]
-------	---------	----	---------	----------

**Valuation**

Standard

What do these buttons do?

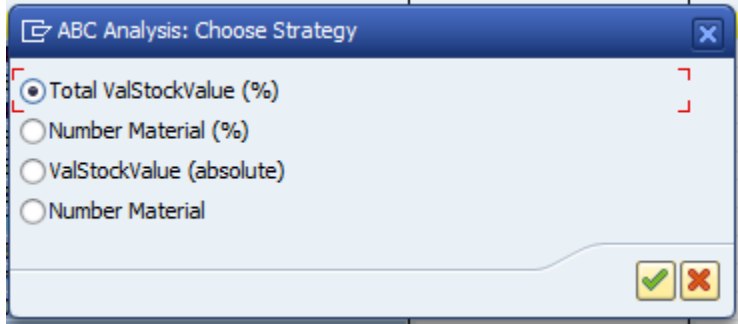
Place cursor in the valuated stock value column and select Edit and ABC Analysis.

Material Analysis Edit Goto View Extras Settings System Help

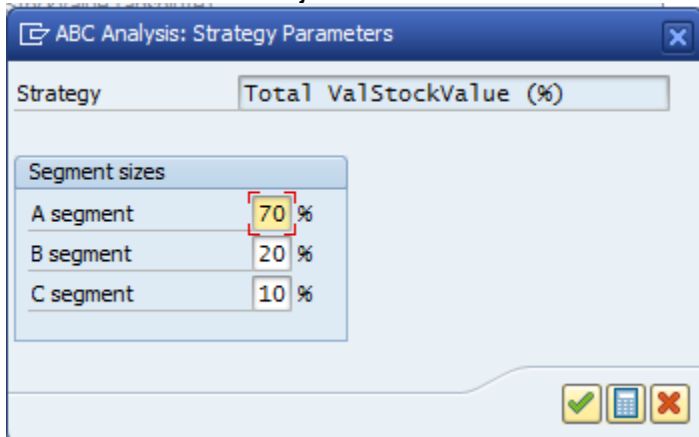
- Cumulative curve...
- Correlation...
- ABC analysis...**
- Classification
- Dual class. ...
- Comparisons
- Choose key figures...
- Selections
- Scroll
- Find...
- Cancel F12

Material	ValStockValue	Val
Total	36,639,823.60 USD	4,29
MS21044N04	6.64 USD	
MS21044N06	50.08 USD	
MS21209C0420	6.04 USD	
MS21209C0615	46.95 USD	
MS21209C0615L	49.88 USD	
MS21209C0815L	5.37 USD	
MS21266-3T	3.91 USD	
MS24523-23	224.94 USD	

This should come up. Select Total VaStockValue.



You can do some adjustments here based on what your business needs are.



This should come up. Click on the buttons since you really cannot break anything here so why not?

**ABC Analysis: ValStockValue**

Details Graphic Cumulative curve New Strategy

More buttons!

Overview of segments - Material

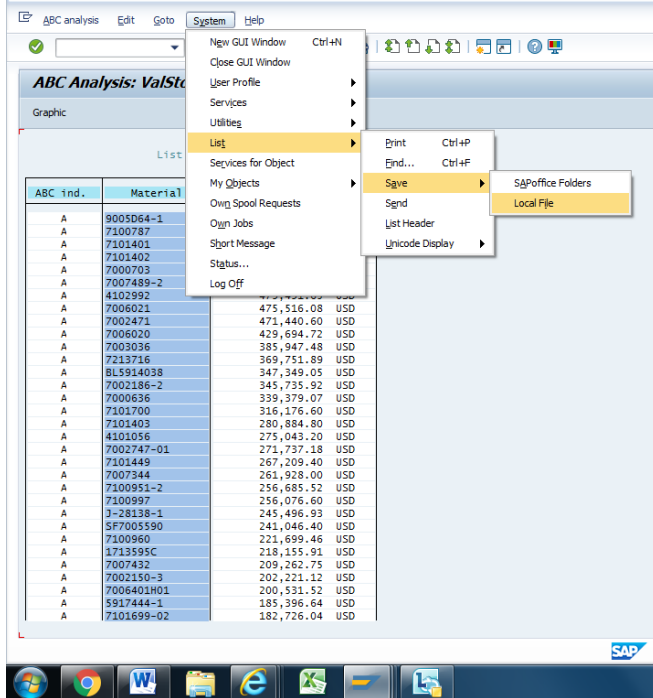
Segments	Material		ValStockValue in segment	
A segment	318	2.34 %	60,651,275.53 USD	70.00 %
B segment	959	7.07 %	17,325,982.71 USD	20.00 %
C segment	12,285	90.58 %	8,662,565.36 USD	10.00 %
<b>Total</b>	<b>13562</b>	<b>100.00 %</b>	<b>86,639,823.60 USD</b>	<b>100.00 %</b>

If you double click in a segment you can get a list of parts in that segment.

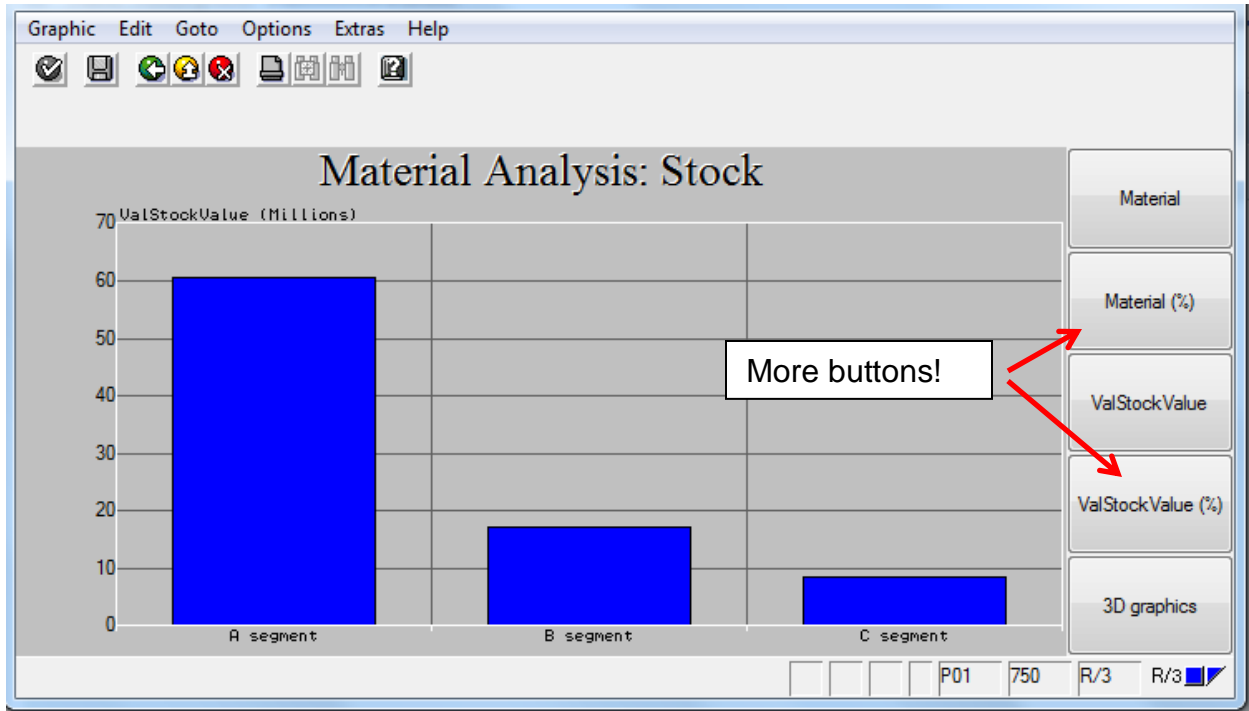
List A segment

ABC ind.	Material	ValStockValue
A	768187-2	7,273,959.81 USD
A	5911482-2	6,548,935.68 USD
A	5911481-2	2,930,569.68 USD
A	5911041-2	1,418,207.94 USD
A	7101101A	1,065,244.30 USD
A	7100866B	1,011,416.23 USD
A	5917503-BRO	920,592.48 USD
A	5914497-4	696,490.21 USD
A	SL7005017AAA	678,730.14 USD
A	7006040	675,799.71 USD
A	1020166-2	658,707.75 USD
A	1023330-3	654,151.68 USD
A	1705126CMA1	651,578.36 USD
A	1700678EMA1	638,610.90 USD
A	5909827-1	562,660.35 USD
A	5911829-4	553,591.68 USD
A	1704612A	543,999.06 USD
A	1704611	533,941.58 USD
A	5912343-23	480,438.00 USD
A	7005259A	479,162.40 USD

If you want to export the list to excel follow this path.



You can also click on the graphics icon to get things like this. I am not a big fan of these things but they are there.



There are many buttons and icons in SAP just waiting to be clicked, some useful, others not so much. The only caution is be careful before saving anything, in fact do not save anything until you are quite sure you want to. Just don't.