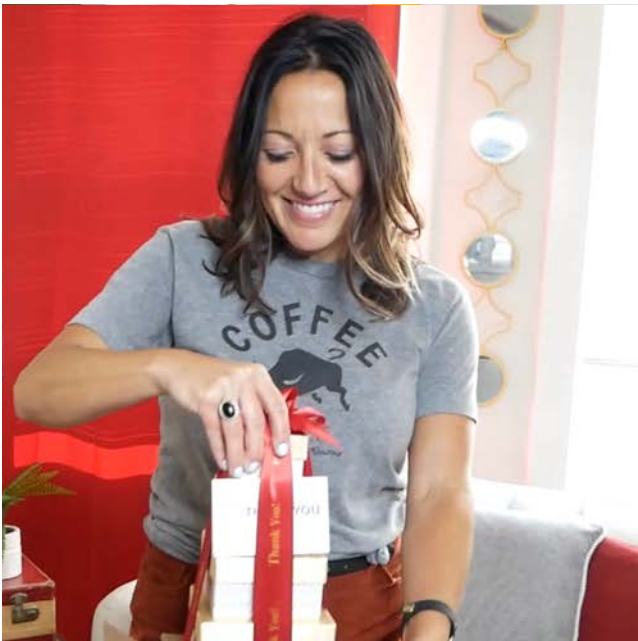


BRANDED FOOD GIFT *Experience*





Energy Booster

Whether you're giving them an energy boost to make it through a meeting, celebrating a health and wellness campaign, or something else entirely, every recipient will appreciate the delicious snacks hidden inside the carton. We feature your message with a full-color label on the outside of the box. They're all sure to be inspired and refreshed by this stellar assortment!

Item # SP201

Price Per Unit

Quantity	24-47	48-95	96-239	240+
3C US \$	\$32.95	\$32.65	\$31.95	Quoted

- Minimum Quantity: 24
- Set-up Charge: \$50.00 (G)
Exact Reorder Set-up Charge: \$20.00 (G)
Blank Items: No Set-up Charge
- Box: 9" x 4" x 4"
- Price includes 4-color process imprint on rectangular label.
- Imprint Area: 6" x 4"
- Individual mailing carton is included at no charge.
- Drop shipments to one or more locations will incur a charge of \$4.00 (G) per carton plus shipping charges.
- Greeting cards available.
- Ship Wt. 2 lb each; 19 lb per case of 12*

**Reflects dimensional weight used by UPS & FedEx*

Production Time: 5 working days. Orders utilizing individual drop shipment directly to recipients will be available for shipment 10 working days from the factory's receipt of a complete and accurate mailing list.

Contents

- White Cheddar Popcorn, 2 oz.
- Sweet & Hot Mustard, 1.4 oz.
- Dipping Pretzels, 2 oz.
- Mini Beef Stick, .5 oz.
- Nature Valley Oats 'n Honey Granola Bar, 1.49 oz.
- Chocolate Chunk Cookie, 1 oz.
- Albanese® Gummi Bears, 2 oz.
- Country Snack Mix, 1.25 oz.



Shelf Stable Wisconsin Favorites

You can bet this heavy-duty, sustainable Bamboo chopping board, firebranded with your imprint, will be used and appreciated daily. We include a seven-ounce block of shelf-stable Mild Pepper Cheese and a five-ounce stick of tangy Beef Summer Sausage. The cleaver is included too for the perfect charcuterie board.

Item # L405

Price Per Unit

Quantity	12-47	48-95	96-479	480+
3C US \$	\$35.95	\$35.65	\$34.95	Quoted

- Minimum Quantity: 12
- Set-up Charge: \$50.00 (G)
Exact Reorder Set-up Charge: \$20.00 (G)
Blank Items: No Set-up Charge
- Cutting Board: 8" x 5.75" x 0.5"
- Price includes firebranded imprint on board.
- Imprint Area: 2.5" x 1.5"
- Individual mailing carton is included at no charge.
- Drop shipments to one or more locations will incur a charge of \$4.00 (G) per carton plus shipping charges.
- Greeting cards available.
- Maximum size of enclosure cards: 4" x 6".
- Ship Wt. 3 lb each; 26 lb per case of 12

Production Time: 5 working days. Orders utilizing individual drop shipment directly to recipients will be available for shipment 10 working days from the factory's receipt of a complete and accurate mailing list.

Contents

- Private Stock Mild Pepper Cheese, 7 oz.
- Beef Summer Sausage, 5 oz.
- Bamboo Chopping Board
- Meat & Cheese Cleaver



Hidden Treasures with Chocolate Covered Almonds

Equally attractive for an office or home, this navy and white patterned drawer box is sure to be used again and again! Pull open the drawer by its ribbon tab to reveal our famous chocolate covered almonds, three-quarters of a pound. For the final touch, we imprint the top of the box with your logo in your choice of color for an impression your recipients won't soon forget.

Item # NDB124

Price Per Unit

Quantity	12-47	48-95	96-239	240+
3C US \$	\$35.95	\$35.65	\$34.95	Quoted

- Minimum Quantity: 12
- Set-up Charge: \$50.00 (G)
Exact Reorder Set-up Charge: \$20.00 (G)
Blank Items: No Set-up Charge
- Gift Box: 7.5" x 3.875" x 2.5"
- Price includes imprint foil-stamped in white on gift box.
- Imprint Area: 2.25" x 1"
- Individual mailing carton is included at no charge.
- Drop shipments to one or more locations will incur a charge of \$4.00 (G) per carton plus shipping charges.
- Individual shipments to destinations with sustained daytime temperatures over 74 degrees may require polystyrene insulated cartons and liquid ice packs at \$15.00 (G) per carton.
- Greeting cards available.
- Ship Wt. 2 lb each; 16 lb per case of 12

Production Time: 5 working days. Orders utilizing individual drop shipment directly to recipients will be available for shipment 10 working days from the factory's receipt of a complete and accurate mailing list.

Contents

- Chocolate Covered Almonds, 3/4 lb.



Popcorn Lover's Pack

Every recipient is sure to find something to enjoy in this assortment of gourmet popcorn! Whether they prefer their popcorn cheesy, sweet, or a combination of the two, they'll delight in the array of delicious options. We add a label featuring your custom design to the outside of the shipping box—popcorn puns optional but highly encouraged. Serves 6-12.

Item # P104

Price Per Unit

Quantity	6-47	48-95	96-239	240+
3C US \$	\$39.95	\$39.65	\$38.95	Quoted

- Minimum Quantity: 6
- Set-up Charge: \$50.00 (G)
Exact Reorder Set-up Charge: \$20.00 (G)
Blank Items: No Set-up Charge
- Box: 12" x 9" x 5"
- Price includes 4-color process imprint on rectangular label.
- Imprint Area: 6" x 4"
- Individual mailing carton is included at no charge.
- Drop shipments to one or more locations will incur a charge of \$4.00 (G) per carton plus shipping charges.
- Greeting cards available.
- Ship Wt. 4 lb each; 28 lb per case of 6*

**Reflects dimensional weight used by UPS & FedEx*

Production Time: 5 working days. Orders utilizing individual drop shipment directly to recipients will be available for shipment 10 working days from the factory's receipt of a complete and accurate mailing list.

Contents

- 2 White Cheddar Popcorn, 2 oz. ea.
- 2 Triple Mix Popcorn, 2.5 oz. ea.
- Caramel Cheesecorn Overload, 5 oz.
- Copper Kettle Caramel Corn, 3.75 oz.



Peppermint Bark & Pecan Clusters in Gift Box with Cardinals in Tree Sleeve

The perfect gift for the chocolate lovers on your list. Rich, mouthwatering Caramel Pecan Clusters made with chewy caramel, full-flavored Southern pecans, and premium chocolate come packed with our creamy and crunchy Peppermint Bark. The silver gift box comes wrapped with a sleeve decorated with a splendid scene of cardinals in a snow-covered tree and contains nine-ounces of the best chocolate ever! The sleeve features your imprint in one of six colors.

Item # SLS1016CAR

Price Per Unit

Quantity	12-47	48-95	96-239	240+
3C US \$	\$45.95	\$45.65	\$44.95	Quoted

- Minimum Quantity: 12
- Set-up Charge: \$50.00 (G)
Exact Reorder Set-up Charge: \$20.00 (G)
Blank Items: No Set-up Charge
- Gift Box: 7.375" x 3.875" x 2.25"
- Price includes your logo foil-stamped in choice of color on the sleeve.
- Imprint Area: 2.5" x 1"
- Individual mailing carton is included at no charge.
- Drop shipments to one or more locations will incur a charge of \$4.00 (G) per carton plus shipping charges.
- Individual shipments to destinations with sustained daytime temperatures over 74 degrees may require polystyrene insulated cartons and liquid ice packs at \$15.00 (G) per carton.
- Greeting cards available.
- Maximum size for enclosure cards: 6" x 3.5".
- Ship Wt. 1 lb each; 13 lb per case of 12

Production Time: 5 working days. Orders utilizing individual drop shipment directly to recipients will be available for shipment 10 working days from the factory's receipt of a complete and accurate mailing list.

Contents

- 8 Caramel Pecan Clusters, 1/4 lb.
- Peppermint Bark, 5 oz.



Peppermint Bark & Chocolate Almonds in Wooden Collector's Box

Two irresistible holiday favorites packed in a sustainable wooden collector's box. Peppermint Bark... creamy, white chocolate topping a layer of dark chocolate with a perfect sprinkling of peppermint pieces has become a traditional holiday confection. We package it with our world-famous Chocolate Covered Almonds in a wooden keepsake box, firebranded or foil-stamped in your choice of color with your logo. Ten-ounces in all. This one will make them smile!

Item # K104

Price Per Unit

Quantity	12-47	48-95	96-479	480+
3C US \$	\$43.95	\$43.65	\$42.95	Quoted

- Minimum Quantity: 12
- Set-up Charge: \$50.00 (G)
Exact Reorder Set-up Charge: \$20.00 (G)
Blank Items: No Set-up Charge
- Wooden Box: 8" x 4" x 3"
- Price includes imprint on lid.
- Imprint Area: 3.5" x 1.5"
- Individual mailing carton is included at no charge.
- Drop shipments to one or more locations will incur a charge of \$4.00 (G) per carton plus shipping charges.
- Individual shipments to destinations with sustained daytime temperatures over 74 degrees may require polystyrene insulated cartons and liquid ice packs at \$15.00 (G) per carton.
- Greeting cards available.
- Second imprint on side of box (firebrand only): \$4.00 (G) per box. Imprint area: 3.5" x 1.5".
- Maximum size for enclosure cards: 6" x 4".
- Ship Wt. 2 lb each; 19 lb per case of 12

Production Time: 5 working days. Orders utilizing individual drop shipment directly to recipients will be available for shipment 10 working days from the factory's receipt of a complete and accurate mailing list.

Contents

- Milk Chocolate Almonds, 5 oz.
- Peppermint Bark, 5 oz.



Extra Virgin Olive Oil Crate

This Extra Virgin Olive Oil, pressed in California, has a smooth, velvety start that gives way to a subtle, pleasant kick. The olives are milled on site at the orchards within 4-6 hours of their harvest to ensure maximum quality and freshest taste.

Simply add salt and pepper for a great dipping experience or use it to spice up salads and other dishes. It is the kind of olive oil that complements without overpowering, letting your cooking skills shine.

Elegantly presented with your custom label in an American-made, hand-crafted wooden crate that is firebranded with your logo. Delight clients, employees, and friends with this delicious gift.

Item # CRT3050

Price Per Unit

Quantity	12-47	48-95	96-239	240+
3C US \$	\$49.95	\$49.65	\$48.95	Quoted

- Minimum Quantity: 12
- Set-up Charge: \$50.00 (G)
Exact Reorder Set-up Charge: \$20.00 (G)
Blank Items: No Set-up Charge
- Wooden Crate: 12" x 4.3125" x 2.5"
- Price includes imprint firebranded on top slat of wooden crate and a 2.5 x 2.5 full color label affixed to the bottle.
- Imprint Area: 3" x 0.625"
- Individual mailing carton is included at no charge.
- Drop shipments to one or more locations will incur a charge of \$4.00 (G) per carton plus shipping charges.
- Greeting cards available.
- Label size: 2.5" x 2.5"; Live area: 2.25" x 2.25"; Bleed area: 2.75" x 2.75".
- Maximum size for enclosure cards: 3.5" x 5".
- PMS Match: Because artwork is reproduced in 4-color process, an exact match to PMS color is not always possible and cannot be guaranteed.
- Ship Wt. 3 lb each; 29 lb per case of 12

Production Time: 10 working days. Orders utilizing individual drop shipment directly to recipients will be available for shipment 10 working days from the factory's receipt of a complete and accurate mailing list.

Contents

- Extra Virgin Olive Oil, 375 ml.



Sweet & Savory Selection

There's nothing finer for a snack lover than this stellar gift! We include fresh-roasted peanuts and our world-famous chocolate almonds for classic favorites, then amp up the flavor with unique cayenne dill pickle pretzels. These amazing tastes come tucked inside a silver gift box that's wrapped with your custom full color art for a look that's exclusively yours.

Item # SLM957FC

Price Per Unit

Quantity	12-47	48-95	96-239	240+
3C US \$	\$49.95	\$49.65	\$48.95	Quoted

- Minimum Quantity: 12
- Set-up Charge: \$50.00 (G)
Exact Reorder Set-up Charge: \$20.00 (G)
Blank Items: No Set-up Charge
- Gift Box: 7.375" x 7.375" x 2.25"
- Price includes full color sleeve.
- Individual mailing carton is included at no charge.
- Drop shipments to one or more locations will incur a charge of \$4.00 (G) per carton plus shipping charges.
- Individual shipments to destinations with sustained daytime temperatures over 74 degrees may require polystyrene insulated cartons and liquid ice packs at \$15.00 (G) per carton.
- Greeting cards available.
- Maximum size for enclosure cards: 6" x 7".
- Ship Wt. 2 lb each; 22 lb per case of 12*

**Reflects dimensional weight used by UPS & FedEx*

Production Time: 10 working days. Orders utilizing individual drop shipment directly to recipients will be available for shipment 10 working days from factory's receipt of complete and accurate mailing list.

Contents

- Cayenne Dill Pickle Pretzels, 1/4 lb.
- Milk Chocolate Almonds, 5 oz.
- Virginia Peanuts, 6 oz.



Toffee & Pecan Clusters in Gift Box with Cardinals in Tree Sleeve

The perfect gift for the chocolate lovers on your list. Rich, mouthwatering Caramel Pecan Clusters made with creamy caramel, full-flavored Southern pecans, and premium chocolate come packed with our signature English Butter Toffee. Our toffee is made the old-fashioned way with plenty of dairy-fresh Wisconsin butter for a flavor that's almost impossible to find anymore. The silver gift box comes wrapped with a sleeve decorated with a splendid scene of cardinals in a snow-covered tree and contains nine-ounces of the best chocolate ever! The sleeve features your imprint in one of six colors.

Item # SLS160CAR

Price Per Unit

Quantity	12-47	48-95	96-479	480+
3C US \$	\$49.95	\$49.65	\$48.95	Quoted

- Minimum Quantity: 12
- Set-up Charge: \$50.00 (G)
Exact Reorder Set-up Charge: \$20.00 (G)
Blank Items: No Set-up Charge
- Gift Box: 7.375" x 3.875" x 2.25"
- Price includes your logo foil-stamped in choice of color on the sleeve.
- Imprint Area: 2.5" x 1"
- Individual mailing carton is included at no charge.
- Drop shipments to one or more locations will incur a charge of \$4.00 (G) per carton plus shipping charges.
- Individual shipments to destinations with sustained daytime temperatures over 74 degrees may require polystyrene insulated cartons and liquid ice packs at \$15.00 (G) per carton.
- Greeting cards available.
- Maximum size for enclosure cards: 6" x 3.5".
- Ship Wt. 1 lb each; 13 lb per case of 12

Production Time: 5 working days. Orders utilizing individual drop shipment directly to recipients will be available for shipment 10 working days from the factory's receipt of a complete and accurate mailing list.

Contents

- 12 pieces of English Butter Toffee, 5 oz.
- 8 Caramel Pecan Clusters, 1/4 lb.



***We look forward to
helping you with your
Gourmet Food Gift selection!***