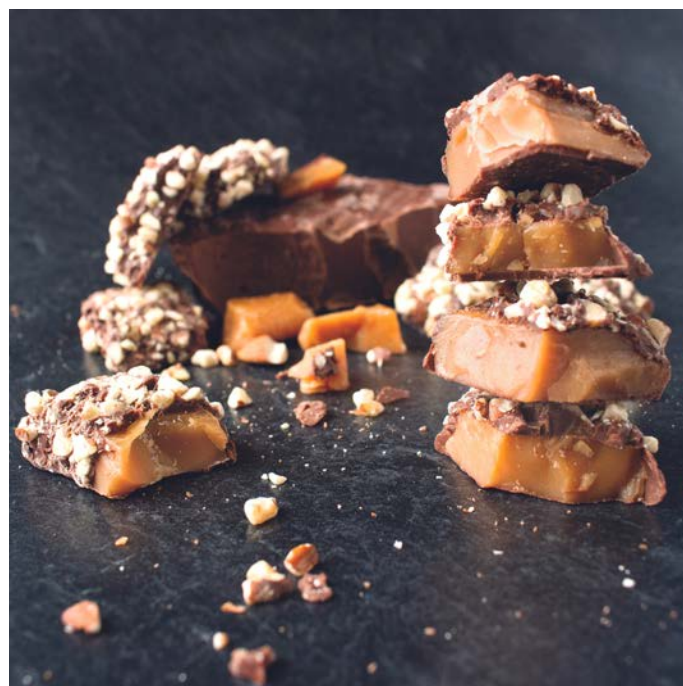
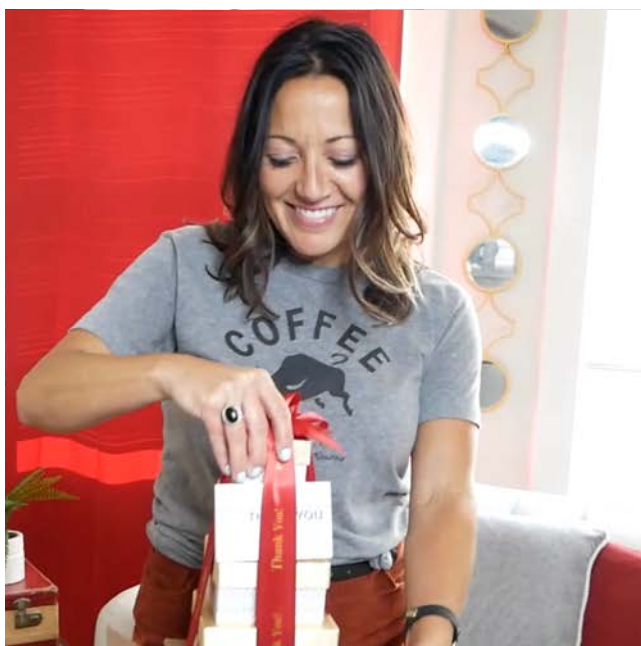


BRANDED FOOD GIFT *Experience*





Double Delights with Caramel Pecan Clusters and English Butter Toffee

These elegant black boxes feature a silver accent and two gourmet treats sure to satisfy any recipient! Crunchy butter toffee and chewy caramel pecan clusters--guaranteed to be delicious--are placed inside. We foil-stamp the box in silver with your logo or imprint before tying it with silver ribbon for a gift as refined as it is delectable.

Item # BSB160

Price Per Unit

Quantity	12-47	48-95	96-479	480+
3C US \$	\$53.95	\$53.65	\$52.95	Quoted

- Minimum Quantity: 12
- Set-up Charge: \$50.00 (G)
Exact Reorder Set-up Charge: \$20.00 (G)
Blank Items: No Set-up Charge
- Gift Box: 7.375" x 3.875" x 2.375"
- Price includes imprint foil-stamped in silver on gift box lid.
- Imprint Area: 3.5" x 1.5"
- Individual mailing carton is included at no charge.
- Drop shipments to one or more locations will incur a charge of \$4.00 (G) per carton plus shipping charges.
- Individual shipments to destinations with sustained daytime temperatures over 74 degrees may require polystyrene insulated cartons and liquid ice packs at \$15.00 (G) per carton.
- Greeting cards available.
- Maximum size for enclosure cards: 6" x 3.5".
- Ship Wt. 2 lb each; 14 lb per case of 12

Production Time: 5 working days. Orders utilizing individual drop shipment directly to recipients will be available for shipment 10 working days from the factory's receipt of a complete and accurate mailing list.

Contents

- 12 pieces of English Butter Toffee, 5 oz.
- 8 Caramel Pecan Clusters, 1/4 lb.



Golden Decadence

Familiar and new flavors fill this chic tower. Its three gold and black boxes contain a little sweet, a little salty, a little creamy, and a lot memorable. We tie it all together with black satin ribbon foil-stamped in gold with your logo or imprint. They're sure to be wowed by this charming gift!

Item # GBLK3033

Price Per Unit

Quantity	8-47	48-95	96-239	240+
3C US \$	\$54.95	\$54.65	\$53.95	Quoted

- Minimum Quantity: 8
- Set-up Charge: \$50.00 (G)
Exact Reorder Set-up Charge: \$20.00 (G)
Blank Items: No Set-up Charge
- Tower: 6" x 5" x 8.5"
- Price includes imprint foil-stamped in gold on black ribbon.
- Imprint Area: 3" x 0.75"
- Individual mailing carton is included at no charge.
- Drop shipments to one or more locations will incur a charge of \$4.00 (G) per carton plus shipping charges.
- Individual shipments to destinations with sustained daytime temperatures over 74 degrees may require polystyrene insulated cartons and liquid ice packs at \$15.00 (G) per carton.
- Greeting cards available.
- Maximum size for enclosure cards: 4" x 6".
- Ship Wt. 3 lb each; 18 lb per case of 6*

*Reflects dimensional weight used by UPS & FedEx

Production Time: 5 working days. Orders utilizing individual drop shipment directly to recipients will be available for shipment 10 working days from the factory's receipt of a complete and accurate mailing list.

Contents

- 11 Cocoa Dusted Truffles, 3.53 oz.
- Milk Chocolate Almonds, 5 oz.
- Triple Mix Popcorn, 2.5 oz.



Savory Sampler

This sustainable wooden tray is packed with savory goodness. We include creamy, mild pepper cheese, tangy beef summer sausage, and seasoned dipping pretzels with two gourmet mustards. We finish it off with three Ghirardelli® chocolate squares for the perfect pop of sweetness. Your logo is firebranded on the front of the tray. Serves 8-10.

Item # CRT4005

Price Per Unit

Quantity	18-47	48-95	96-239	240+
3C US \$	\$54.95	\$54.65	\$53.95	Quoted

- Minimum Quantity: 18
- Set-up Charge: \$50.00 (G)
Exact Reorder Set-up Charge: \$20.00 (G)
Blank Items: No Set-up Charge
- Tray: 8.375" x 8.375" x 2.25"
- Price includes imprint firebranded on front of tray.
- Imprint Area: 3" x 1"
- Individual mailing carton is included at no charge.
- Drop shipments to one or more locations will incur a charge of \$4.00 (G) per carton plus shipping charges.
- Individual shipments to destinations with sustained daytime temperatures over 74 degrees may require polystyrene insulated cartons and liquid ice packs at \$15.00 (G) per carton.
- Greeting cards available.
- Maximum size for enclosure cards: 6" x 7".
- Ship Wt. 3 lb each; 19 lb per case of 6*

*Reflects dimensional weight used by UPS & FedEx

Production Time: 5 working days. Orders utilizing individual drop shipment directly to recipients will be available for shipment 10 working days from the factory's receipt of a complete and accurate mailing list.

Contents

- Dipping Pretzels, 2 oz.
- Beef Summer Sausage, 5 oz.
- Private Stock Mild Pepper Cheese, 7 oz.
- 2 Gourmet Dipping Mustards, 1.4 oz. each
- 3 Ghirardelli Dark Chocolate Sea Salt Caramel Squares, .53 oz. each
- Basswood Tray



Red Trio of Sweets with Snowflake Wrap

Our red Trio of Sweets contains 12 pieces of English Butter Toffee, made with plenty of pure, dairy-fresh butter; 8 mouth-watering Caramel Pecan Clusters; and approximately 40 Chocolate Covered Almonds. With almost one full pound of premium chocolate, this makes a wonderful gift for every chocolate lover. Your logo is foil-stamped in white on the gift box, which is complete with a decorative snowflake sleeve. Serves 8-12.

Item # RD3001

Price Per Unit

Quantity	12-47	48-95	96-239	240+
3C US \$	\$54.95	\$54.65	\$53.95	Quoted

- Minimum Quantity: 12
- Set-up Charge: \$50.00 (G)
Exact Reorder Set-up Charge: \$20.00 (G)
Blank Items: No Set-up Charge
- Gift Box: 10.6875" x 3.875" x 2.1875"
- Price includes imprint foil-stamped in white on red gift box.
- Imprint Area: 2.75" x 1"
- Individual mailing carton is included at no charge.
- Drop shipments to one or more locations will incur a charge of \$4.00 (G) per carton plus shipping charges.
- Individual shipments to destinations with sustained daytime temperatures over 74 degrees may require polystyrene insulated cartons and liquid ice packs at \$15.00 (G) per carton.
- Greeting cards available.
- Maximum size for enclosure cards: 3.5" x 5".
- Ship Wt. 2 lb each; 19 lb per case of 12

Production Time: 5 working days. Orders utilizing individual drop shipment directly to recipients will be available for shipment 10 working days from the factory's receipt of a complete and accurate mailing list.

Contents

- 12 pieces of English Butter Toffee, 5 oz.
- 8 Caramel Pecan Clusters, 1/4 lb.
- Milk Chocolate Almonds, 5 oz.



Taste Tempting Tower of Appreciation

Here's a great way to show your appreciation! This elegant silver and black tower boasts some great treats... Gourmet Chocolate Chip Cookies, three and one-half ounces; Dark Chocolate Covered Almonds, five-ounces; Chocolate Sea Salt Caramel Corn, five-ounces; and crunchy Choice Virginia Peanuts, six-ounces. You can't go wrong with this delicious gift. Serves 8-12.

Item # SBLK2912

Price Per Unit

Quantity	8-47	48-95	96-239	240+
3C US \$	\$59.95	\$59.65	\$58.95	Quoted

- Minimum Quantity: 8
- Set-up Charge: \$50.00 (G)
Exact Reorder Set-up Charge: \$20.00 (G)
Blank Items: No Set-up Charge
- Tower: 7.375" x 3.875" x 6.75"
- Price includes imprint foil-stamped in silver on black ribbon.
- Imprint Area: 3" x 0.75"
- Individual mailing carton is included at no charge.
- Drop shipments to one or more locations will incur a charge of \$4.00 (G) per carton plus shipping charges.
- Individual shipments to destinations with sustained daytime temperatures over 74 degrees may require polystyrene insulated cartons and liquid ice packs at \$15.00 (G) per carton.
- Greeting cards available.
- Maximum size for enclosure cards: 6" x 4".
- Ship Wt. 3 lb each; 16 lb per case of 6*

*Reflects dimensional weight used by UPS & FedEx

Production Time: 5 working days. Orders utilizing individual drop shipment directly to recipients will be available for shipment 10 working days from the factory's receipt of a complete and accurate mailing list.

Contents

- Chocolate Chip Cookies, 2.5 oz.
- Dark Chocolate Almonds, 5 oz.
- Chocolate Sea Salt Caramel Corn, 5 oz.
- Virginia Peanuts, 6 oz.



Golden Enchantment

Three beautiful boxes contain the perfect balance of sweets for an experience every recipient is sure to find enchanting! Chocolates paired with popcorn and cookies fill the gold and black boxes, which we tie together with black satin ribbon foil-stamped with your logo in gold. They won't miss your gratitude with this superb gift!

Item # GBLK3027

Price Per Unit

Quantity	8-47	48-95	96-239	240+
3C US \$	\$65.95	\$65.65	\$64.95	Quoted

- Minimum Quantity: 8
- Set-up Charge: \$50.00 (G)
Exact Reorder Set-up Charge: \$20.00 (G)
Blank Items: No Set-up Charge
- Tower: 6" x 5" x 8.5"
- Price includes imprint foil-stamped in gold on black ribbon.
- Imprint Area: 3" x 0.75"
- Individual mailing carton is included at no charge.
- Drop shipments to one or more locations will incur a charge of \$4.00 (G) per carton plus shipping charges.
- Individual shipments to destinations with sustained daytime temperatures over 74 degrees may require polystyrene insulated cartons and liquid ice packs at \$15.00 (G) per carton.
- Greeting cards available.
- Maximum size for enclosure cards: 4" x 6".
- Ship Wt. 3 lb each; 18 lb per case of 6*

*Reflects dimensional weight used by UPS & FedEx

Production Time: 5 working days. Orders utilizing individual drop shipment directly to recipients will be available for shipment 10 working days from the factory's receipt of a complete and accurate mailing list.

Contents

- 8 Chocolate Sea Salt Caramels, 4.75 oz.
- Copper Kettle Caramel Corn, 3.75 oz.
- Milk Chocolate Almonds, 5 oz.
- Chocolate Chip Cookies, 2.5 oz.



Shelf Stable Charcuterie Starter

Get the party started with this fabulous gift! Shelf stable pepper cheese is added to a stick of spicy beef summer sausage, along with gourmet crackers for serving. The included sustainable bamboo board is perfect to continue the charcuterie party and comes firebranded with your logo to remind them of your appreciation every time they use it.

Item # L7535

Price Per Unit

Quantity	8-47	48-95	96-239	240+
3C US \$	\$65.95	\$65.65	\$64.95	Quoted

- Minimum Quantity: 8
 - Set-up Charge: \$50.00 (G)
Exact Reorder Set-up Charge: \$20.00 (G)
Blank Items: No Set-up Charge
 - Cutting Board: 15.75" x 6" x 0.75"
 - Price includes firebranded imprint on board.
 - Imprint Area: 2.5" x 1.5"
 - Individual mailing carton is included at no charge.
 - Drop shipments to one or more locations will incur a charge of \$4.00 (G) per carton plus shipping charges.
 - Greeting cards available.
 - Ship Wt. 4 lb each; 26 lb per case of 6*
- *Reflects dimensional weight used by UPS & FedEx*

Production Time: 5 working days. Orders utilizing individual drop shipment directly to recipients will be available for shipment 10 working days from the factory's receipt of a complete and accurate mailing list.

Contents

- Olive Oil & Sea Salt Crackers, 2 oz.
- Private Stock Mild Pepper Cheese, 7 oz.
- Beef Summer Sausage, 5 oz.
- Sweet & Hot Mustard, 1.4 oz.
- Blueberry Preserves, 1 oz.
- Bamboo Serving Board
- Meat & Cheese Cleaver



Snowflake Treasures Tower

Receiving this charming tower is the best kind of surprise! Three round boxes come filled with sweet treats sure to delight every recipient. Featuring three boxes with complementary patterns, this gift comes stacked in a clear bag tied with white satin foil-stamped with your imprint in your choice of color. For the perfect final touch, a festive snowflake ornament hangs from the bow to tease and entice. They're sure to treasure the memories of this delicious gift!

Item # RSF105

Price Per Unit

Quantity	8-47	48-95	96-239	240+
3C US \$	\$69.95	\$69.65	\$68.95	Quoted

- Minimum Quantity: 8
- Set-up Charge: \$50.00 (G)
Exact Reorder Set-up Charge: \$20.00 (G)
Blank Items: No Set-up Charge
- Tower: 5.75" x 4" x 11"
- Price includes imprint foil-stamped in choice of color on white ribbon.
- Imprint Area: 3" x 0.75"
- Individual mailing carton is included at no charge.
- Drop shipments to one or more locations will incur a charge of \$4.00 (G) per carton plus shipping charges.
- Individual shipments to destinations with sustained daytime temperatures over 74 degrees may require polystyrene insulated cartons and liquid ice packs at \$15.00 (G) per carton.
- Greeting cards available.
- Maximum size for enclosure cards: 4" x 6".
- Ship Wt. 4 lb each; 54 lb per case of 12*

*Reflects dimensional weight used by UPS & FedEx

Production Time: 5 working days. Orders utilizing individual drop shipment directly to recipients will be available for shipment 10 working days from the factory's receipt of a complete and accurate mailing list.

Contents

- 5 Cocoa Dusted Truffles, .3 oz. each
- Milk Chocolate Almonds, 5 oz.
- Copper Kettle Caramel Corn, 3.75 oz.
- 12 pieces of English Butter Toffee, 5 oz.



Taste Tempting Tower of Treats

Here's a gift for people who truly appreciate the finest! This festive Silver & Navy tower boasts some of our very finest... freshly roasted and lightly salted Fancy Cashews, five-ounces; Chocolate Covered Almonds, five-ounces; 8 Chocolate Sea Salt Caramels, four and three-quarter ounces; and 11 smooth and creamy Cocoa Dusted Truffles, three and a half ounces. You can't go wrong with this delicious gift. Serves 10-12.

Item # SN2719

Price Per Unit

Quantity	8-47	48-95	96-239	240+
3C US \$	\$74.95	\$74.65	\$73.95	Quoted

- Minimum Quantity: 8
- Set-up Charge: \$50.00 (G)
Exact Reorder Set-up Charge: \$20.00 (G)
Blank Items: No Set-up Charge
- Tower: 7.375" x 3.875" x 6.75"
- Price includes imprint foil-stamped in silver on navy ribbon.
- Imprint Area: 3" x 0.75"
- Individual mailing carton is included at no charge.
- Drop shipments to one or more locations will incur a charge of \$4.00 (G) per carton plus shipping charges.
- Individual shipments to destinations with sustained daytime temperatures over 74 degrees may require polystyrene insulated cartons and liquid ice packs at \$15.00 (G) per carton.
- Greeting cards available.
- Maximum size for enclosure cards: 6" x 4".
- Ship Wt. 3 lb each; 16 lb per case of 6*

**Reflects dimensional weight used by UPS & FedEx*

Production Time: 5 working days. Orders utilizing individual drop shipment directly to recipients will be available for shipment 10 working days from the factory's receipt of a complete and accurate mailing list.

Contents

- Fancy Cashews, 5 oz.
- Milk Chocolate Almonds, 5 oz.
- 8 Chocolate Sea Salt Caramels, 4.75 oz.
- 11 Cocoa Dusted Truffles, 3.5 oz.



***We look forward to
helping you with your
Gourmet Food Gift selection!***