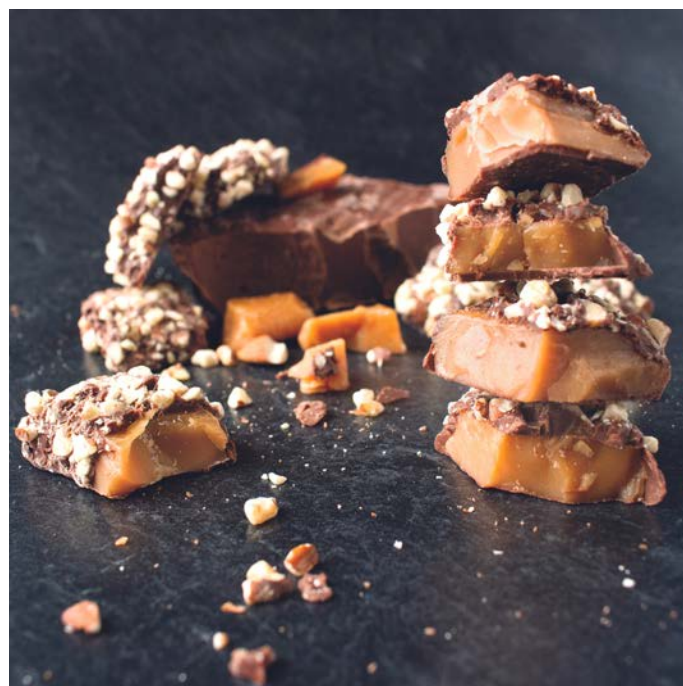
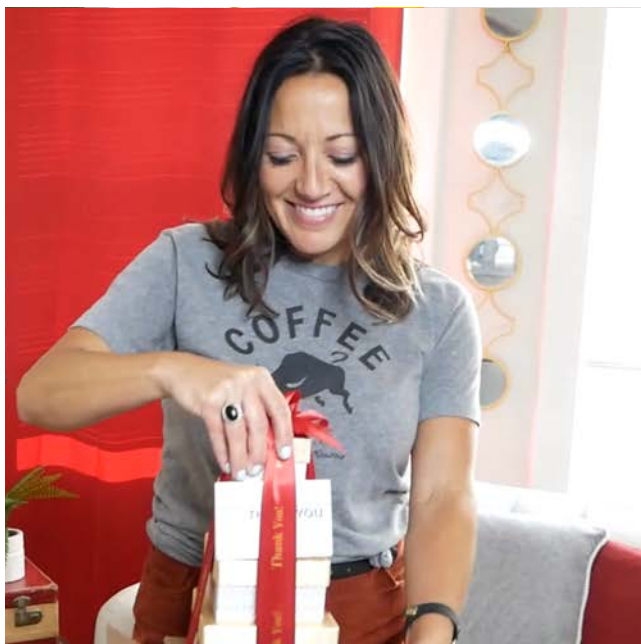


BRANDED FOOD GIFT *Experience*





Cinnamon Walnut Coffee Cake

This cake was chosen to be on Oprah's "O-List" because it's so delicious! It is perfect for sharing and a treat that everyone will rave about! An all-time favorite gift year after year, this cake is in a silver gift box, tied with a white satin ribbon foil-stamped with your imprint. Made with the finest ingredients available including farm-fresh eggs, pure bourbon vanilla, sour cream, and crunchy walnuts, with a cinnamon streusel added to the center and the top of the cake. One and three-quarter pounds, and shelf stable for up to one week. Serves 10-14.

Item # SLCK15

Price Per Unit

Quantity	6-47	48-95	96-239	240+
3C US \$	\$75.95	\$75.65	\$74.95	Quoted

- Minimum Quantity: 6
- Set-up Charge: \$50.00 (G)
Exact Reorder Set-up Charge: \$20.00 (G)
Blank Items: No Set-up Charge
- Gift Box: 8.5" x 8.5" x 3.5"
- Price includes imprint foil-stamped in your choice of color on white ribbon.
- Imprint Area: 3" x 0.75"
- Individual mailing carton is included at no charge.
- Drop shipments to one or more locations will incur a charge of \$4.00 (G) per carton plus shipping charges.
- Greeting cards available.
- Baked goods should be enjoyed within 1 week; or stored in a freezer for up to 3 months. Instructions for storage are included with each gift.
- Maximum size for enclosure cards: 6" x 7".
- Ship Wt. 3 lb each; 18 lb per case of 6*

**Reflects dimensional weight used by UPS & FedEx*

Production Time: 5 working days. Orders utilizing individual drop shipment directly to recipients will be available for shipment 10 working days from the factory's receipt of a complete and accurate mailing list.

Contents

- Cinnamon Walnut Coffee Cake, 1 lb. 12 oz.



Indulgent Delights

A decorative black box, accented by a silver stripe and tied with silver ribbon, opens to reveal four exquisite treats sure to please every recipient! Crunchy butter toffee, creamy chocolate sea salt caramels, rich milk chocolate almonds, and fresh-roasted mixed nuts fill each refined box and are guaranteed delicious. We foil-stamp your logo or imprint on the box for the final touch. It's a gift they're sure to remember for years to come.

Item # BSB928

Price Per Unit

Quantity	6-47	48-95	96-239	240+
3C US \$	\$79.95	\$79.65	\$78.95	Quoted

- Minimum Quantity: 6
- Set-up Charge: \$50.00 (G)
Exact Reorder Set-up Charge: \$20.00 (G)
Blank Items: No Set-up Charge
- Gift Box: 7.375" x 7.375" x 2.375"
- Price includes imprint foil-stamped in silver on gift box lid.
- Imprint Area: 2.75" x 1"
- Individual mailing carton is included at no charge.
- Drop shipments to one or more locations will incur a charge of \$4.00 (G) per carton plus shipping charges.
- Individual shipments to destinations with sustained daytime temperatures over 74 degrees may require polystyrene insulated cartons and liquid ice packs at \$15.00 (G) per carton.
- Greeting cards available.
- Ship Wt. 2 lb each; 25 lb per case of 12

Production Time: 5 working days. Orders utilizing individual drop shipment directly to recipients will be available for shipment 10 working days from the factory's receipt of a complete and accurate mailing list.

Contents

- Deluxe Mixed Nuts, 5 oz.
- Milk Chocolate Almonds, 5 oz.
- 12 pieces of English Butter Toffee, 5 oz.
- 8 Chocolate Sea Salt Caramels, 4.75 oz.



Snacking Smorgasbord with Blue Snowman Sleeve

This lovely gift box has everything you need to start the perfect holiday party! Filled with Wisconsin cheese, sausage, and other sumptuous treats, it's a flavor bonanza sure to be remembered. Each box features a sleeve decorated with a nostalgic snowman scene, foil-stamped with your imprint in your choice of color. Make a statement they'll truly appreciate with this amazing gift!

Item # SLS224BSNO

Price Per Unit

Quantity	6-47	48-95	96-239	240+
3C US \$	\$79.95	\$79.65	\$78.95	Quoted

- Minimum Quantity: 6
 - Set-up Charge: \$50.00 (G)
Exact Reorder Set-up Charge: \$20.00 (G)
Blank Items: No Set-up Charge
 - Gift Box: 10.625" x 7.125" x 2.125"
 - Price includes your logo foil-stamped in choice of color on the sleeve.
 - Imprint Area: 2.5" x 1.5"
 - Individual mailing carton is included at no charge.
 - Drop shipments to one or more locations will incur a charge of \$4.00 (G) per carton plus shipping charges.
 - Individual shipments to destinations with sustained daytime temperatures over 74 degrees may require polystyrene insulated cartons and liquid ice packs at \$15.00 (G) per carton.
 - Greeting cards available.
 - Ship Wt. 4 lb each; 19 lb per case of 6*
- *Reflects dimensional weight used by UPS & FedEx*

Production Time: 5 working days. Orders utilizing individual drop shipment directly to recipients will be available for shipment 10 working days from the factory's receipt of a complete and accurate mailing list.

Contents

- Private Stock Medium Cheddar Cheese, 7 oz.
- Beef Summer Sausage, 5 oz.
- Olive Oil & Sea Salt Crackers, 2 oz.
- Fig Spread, 1.05 oz.
- Fancy Cashews, 5 oz.
- Milk Chocolate Almonds, 5 oz.
- Walker's Scottish Shortbread, 1.4 oz.



Snacking Smorgasbord with Full Color Sleeve

This delightful gift box has everything you need to start the perfect holiday party! Filled with natural Wisconsin cheddar cheese, sausage, and other sumptuous treats, it's a flavor bonanza sure to be remembered. Each box features a full-color sleeve of your own design to spotlight your custom message. Make a statement they'll truly appreciate with this amazing gift!

Item # SLS224FC

Price Per Unit

Quantity	48-95	96-239	240-479	480+
3C US \$	\$79.95	\$79.65	\$78.95	Quoted

- Minimum Quantity: 48
 - Set-up Charge: \$50.00 (G)
Exact Reorder Set-up Charge: \$20.00 (G)
Blank Items: No Set-up Charge
 - Gift Box: 10.625" x 7.125" x 2.125"
 - Price includes 4-color process printing.
 - Individual mailing carton is included at no charge.
 - Drop shipments to one or more locations will incur a charge of \$4.00 (G) per carton plus shipping charges.
 - Individual shipments to destinations with sustained daytime temperatures over 74 degrees may require polystyrene insulated cartons and liquid ice packs at \$15.00 (G) per carton.
 - Greeting cards available.
 - Maximum size for enclosure cards: 6" x 7".
 - Ship Wt. 4 lb each; 19 lb per case of 6*
- *Reflects dimensional weight used by UPS & FedEx*

Production Time: 5 working days. Orders utilizing individual drop shipment directly to recipients will be available for shipment 10 working days from the factory's receipt of a complete and accurate mailing list.

Contents

- Private Stock Medium Cheddar Cheese, 7 oz.
- Beef Summer Sausage, 5 oz.
- Olive Oil & Sea Salt Crackers, 2 oz.
- Fig Spread, 1.05 oz.
- Fancy Cashews, 5 oz.
- Milk Chocolate Almonds, 5 oz.
- Walker's Scottish Shortbread, 1.4 oz.



Chocolate Fantasy Tower

An array of chocolates is accentuated by a pop of lightly-salted nuts in this exceptional tower. The black and white boxes with gold accents make a remarkably chic presentation that's sure to leave a positive impression. Your imprint foil-stamped in gold on your choice of ribbon is the perfect final touch to share your appreciation. This is a gift that will get them talking!

Item # BWB3061

Price Per Unit

Quantity	8-47	48-95	96-239	240+
3C US \$	\$85.95	\$85.65	\$84.95	Quoted

- Minimum Quantity: 8
- Set-up Charge: \$50.00 (G)
Exact Reorder Set-up Charge: \$20.00 (G)
Blank Items: No Set-up Charge
- Tower: 6" x 5" x 8.5"
- Price includes imprint foil-stamped in gold on choice of ribbon.
- Imprint Area: 3" x 0.75"
- Individual mailing carton is included at no charge.
- Drop shipments to one or more locations will incur a charge of \$4.00 (G) per carton plus shipping charges.
- Individual shipments to destinations with sustained daytime temperatures over 74 degrees may require polystyrene insulated cartons and liquid ice packs at \$15.00 (G) per carton.
- Greeting cards available.
- Ship Wt. 3 lb each; 18 lb per case of 6*

**Reflects dimensional weight used by UPS & FedEx*

Production Time: 5 working days. Orders utilizing individual drop shipment directly to recipients will be available for shipment 10 working days from the factory's receipt of a complete and accurate mailing list.

Contents

- 12 pieces of English Butter Toffee, 5 oz.
- Milk Chocolate Almonds, 5 oz.
- Deluxe Mixed Nuts, 5 oz.
- 11 Cocoa Dusted Truffles, 3.53 oz.



Snowflake Party Sampler

Express your appreciation in a delectably memorable way! Popcorn, chocolates, cookies, and more fill six snowflake-adorned boxes, which are stacked high and tied with pewter ribbon featuring your logo foil-stamped in your choice of color. This gourmet gift is sure to get every recipient talking!

Item # SF6047

Price Per Unit

Quantity	6-47	48-95	96-239	240+
3C US \$	\$89.95	\$89.65	\$88.95	Quoted

- Minimum Quantity: 6
 - Set-up Charge: \$50.00 (G)
Exact Reorder Set-up Charge: \$20.00 (G)
Blank Items: No Set-up Charge
 - Tower: 6.5" x 5.75" x 15.75"
 - Price includes imprint in gold or silver on pewter ribbon.
 - Imprint Area: 3" x 0.75"
 - Individual mailing carton is included at no charge.
 - Drop shipments to one or more locations will incur a charge of \$4.00 (G) per carton plus shipping charges.
 - Individual shipments to destinations with sustained daytime temperatures over 74 degrees may require polystyrene insulated cartons and liquid ice packs at \$15.00 (G) per carton.
 - Greeting cards available.
 - Ship Wt. 6 lb each; 39 lb per case of 6*
- *Reflects dimensional weight used by UPS & FedEx*

Production Time: 5 working days. Orders utilizing individual drop shipment directly to recipients will be available for shipment 10 working days from the factory's receipt of a complete and accurate mailing list.

Contents

- Milk Chocolate Almonds, 5 oz.
- 3 Cocoa Dusted Truffles, .3 oz. each
- 2 pieces of Butter Almond Toffee, .5 oz. each
- Chocolate Chip Cookies, 2.5 oz.
- Dipping Pretzels, 2 oz.
- Sweet & Hot Mustard, 1.4 oz.
- Triple Mix Popcorn, 2.5 oz.



Crate Full of Snacks

This large crate (Made in the USA) is crafted from sustainable basswood and packed with a variety of gourmet treats, including bite-sized cookies, caramel corn, chocolate dipped pretzels, and more! After everything has been enjoyed, the basswood crate can be used to store magazines, catalogs, or papers.

Item # CRH7415

Price Per Unit

Quantity	6-47	48-95	96-239	240+
3C US \$	\$99.95	\$99.65	\$98.95	Quoted

- Minimum Quantity: 6
- Set-up Charge: \$50.00 (G)
Exact Reorder Set-up Charge: \$20.00 (G)
Blank Items: No Set-up Charge
- Wooden Crate: 13" x 9.5" x 3.25"
- Price includes your imprint firebranded onto the top slat of crate.
- Imprint Area: 3" x 0.625"
- Individual mailing carton is included at no charge.
- Drop shipments to one or more locations will incur a charge of \$4.00 (G) per carton plus shipping charges.
- Individual shipments to destinations with sustained daytime temperatures over 74 degrees may require polystyrene insulated cartons and liquid ice packs at \$15.00 (G) per carton.
- Greeting cards available.
- Ship Wt. 8 lb each; 34 lb per case of 4*

**Reflects dimensional weight used by UPS & FedEx*

Production Time: 5 working days. Orders utilizing individual drop shipment directly to recipients will be available for shipment 10 working days from the factory's receipt of a complete and accurate mailing list.

Contents

- Oatmeal Cranberry White Chocolate Cookies, 2.5 oz.
- Chocolate Chip Cookies, 2.5 oz.
- Key Lime Tea Cookies, 2.5 oz.
- 3 Ghirardelli® Chocolate Squares, .375 oz. each
- Chocolate Sea Salt Caramel Corn, 5 oz.
- Milk Chocolate Almonds, 5 oz.
- Dark Chocolate Graham, 1.02 oz.
- 2 Chocolate Dipped Pretzels, .8 oz. each
- Copper Kettle Caramel Corn, 3.75 oz.
- 11 Toffee Crunch Truffles, 3.53 oz.
- Salt Water Taffy, 3 oz.
- 2 Double Dutch Hot Cocoa, 1.25 oz. each
- Bleu Cheese Stuffed Olives, 2.5 oz.
- 2 Peppermint Patties, .6 oz. each



Shelf Stable A Symphony of Flavor

This beautiful bamboo board with its inset contrasting stripes comes loaded with a veritable symphony of flavor! We start with shelf stable cheese that does not require refrigeration upon receipt, then add sweet, salty, savory, and spicy flavors to tantalize every taste bud. Once the delicious food has been enjoyed, the board, firebranded with your logo or imprint, makes for amazing charcuterie presentations. They're sure to appreciate this fabulous gift!

Item # L8505

Price Per Unit

Quantity	6-47	48-95	96-239	240+
3C US \$	\$99.95	\$99.65	\$98.95	Quoted

- Minimum Quantity: 6
- Set-up Charge: \$50.00 (G)
Exact Reorder Set-up Charge: \$20.00 (G)
Blank Items: No Set-up Charge
- Cutting Board: 12.5" x 8" x 0.75"
- Price includes imprint firebranded on board.
- Imprint Area: 2.5" x 1.25"
- Individual mailing carton is included at no charge.
- Drop shipments to one or more locations will incur a charge of \$4.00 (G) per carton plus shipping charges.
- Individual shipments to destinations with sustained daytime temperatures over 74 degrees may require polystyrene insulated cartons and liquid ice packs at \$15.00 (G) per carton.
- Greeting cards available.
- Ship Wt. 5 lb each; 27 lb per case of 6

Production Time: 5 working days. Orders utilizing individual drop shipment directly to recipients will be available for shipment 10 working days from the factory's receipt of a complete and accurate mailing list.

Contents

- Cayenne Dill Pickle Pretzels, 1/4 lb.
- Beef Summer Sausage, 5 oz.
- Private Stock Mild Pepper Cheese, 7 oz.
- 8 Chocolate Sea Salt Caramels, 4.75 oz.
- Fancy Cashews, 5 oz.
- Sweet & Hot Dipping Mustard, 1.4 oz.
- Bamboo Serving Board
- Meat & Cheese Cleaver



Sensationally Sweet & Salty

Gourmet chocolates and other delicious treats abound in this amazing tower! We start with two boxes stacked end to end and lovingly add a sea salt caramel chocolate bar Sweetener Card, featuring a sweet holiday sentiment, to the front. Your imprint is featured in your choice of color on the white satin ribbon at the top, with a matching imprint inside the Sweetener Card. Showing your appreciation has never tasted so good!

Item # SCBT3

Price Per Unit

Quantity	6-47	48-95	96-239	240+
3C US \$	\$99.95	\$99.65	\$98.95	Quoted

- Minimum Quantity: 6
- Set-up Charge: \$50.00 (G)
Exact Reorder Set-up Charge: \$20.00 (G)
Blank Items: No Set-up Charge
- Tower: 7.375" x 2.75" x 14.75"
- Price includes imprint foil-stamped in choice of color on white satin ribbon and inside Sweetener Card.
- Imprint Area: 2.5" x 0.75"
- Individual mailing carton is included at no charge.
- Drop shipments to one or more locations will incur a charge of \$4.00 (G) per carton plus shipping charges.
- Individual shipments to destinations with sustained daytime temperatures over 74 degrees may require polystyrene insulated cartons and liquid ice packs at \$15.00 (G) per carton.
- Greeting cards available.
- Ship Wt. 5 lb each; 26 lb per case of 6*

*Reflects dimensional weight used by UPS & FedEx

Production Time: 5 working days. Orders utilizing individual drop shipment directly to recipients will be available for shipment 10 working days from the factory's receipt of a complete and accurate mailing list.

Contents

- 8 Peanut Butter Meltaways, 1/4 lb.
- Fancy Cashews, 5 oz.
- 11 pieces of Cinnamon Churro Toffee, 5 oz.
- Milk Chocolate Almonds, 5 oz.
- Chocolate Sea Salt Caramel Corn, 5 oz.
- Sea Salt Caramel Dark Chocolate Bar, 3.5 oz.



***We look forward to
helping you with your
Gourmet Food Gift selection!***