

# Santa Barbara County The Real Cost Measure in California 2023

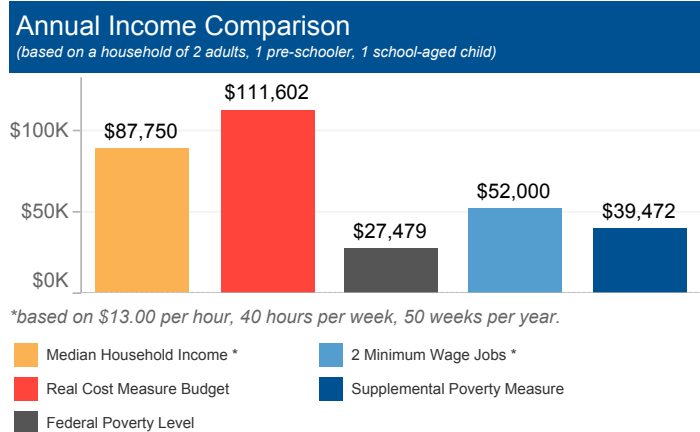


United Ways of California

The Real Cost Measure (RCM) estimates the amount of income required to meet basic needs including the costs of housing, child care, food, transportation, health care, and taxes. Unlike the official poverty measure which is primarily calculated based on the cost of food adjusted for inflation annually, the Real Cost Measure takes into account geographical differences in the cost of living throughout California.

If any results show blank values, that indicates the sample size is too small to illustrate Real Cost Measure results. Per our methodology, estimates with a cell size of greater than 5,000 are assumed to be accurate within +/-1% based on design factor analysis. Cell sizes less than 5,000 are suppressed.

# of Households below Real Cost Measure	% of Households below Real Cost Measure	% of Households below Real Cost Measure with at least 1 Working Adult
<b>50,929</b>	<b>42%</b>	<b>96%</b>



### Household Budgets

	1 Adult	2 Adults	2 Adults, 1 Pre-schooler, 1 School-aged child
Housing	\$20,736	\$24,180	\$28,488
Food	\$4,884	\$8,964	\$13,848
Health Care	\$2,868	\$5,736	\$11,484
Child Care	\$0	\$0	\$19,056
Transportation	\$6,384	\$12,768	\$12,768
Miscellaneous	\$3,492	\$5,160	\$8,568
Taxes/Credits	\$7,834	\$9,951	\$17,390
<b>FINAL BUDGET</b>	<b>\$46,198</b>	<b>\$66,759</b>	<b>\$111,602</b>

### Households of Color

Across the county, African Americans and Latinos have a disproportionate number of households with incomes below the Standard. In this area, of the 50,929 households below the Real Cost Measure, 25,869 are Latino.

### Households with Young Children

- 71% of households with children under six struggle, a rate much greater than that of the rest of the county.
- Single mothers are most likely to struggle. 79% in the county are below the Real Cost Measure.

### Working Households

- 96% of households below RCM have at least one working adult.
- 70% of heads of household who work are employed full time and year round.
- A family of four (2 adults, 1 infant, 1 school-aged child) would need to hold more than 3 full time, minimum-wage jobs to achieve economic security.\*\*

### Housing Burden

- 41% of all households in the county spend more than 30% of their income on housing.

### Education

	# below RCM	% below RCM
Less than High School	11,521	80%
High School Diploma or Equivalent	8,780	57%
Some College, Assoc. or Voc.	18,869	50%
Bachelor's degree or higher	11,759	22%

### Ethnicity

	# below RCM	% below RCM
Latino	25,869	60%
African American		
Asian American / Pacific Islander		
White	20,707	30%
Native American/Alaska Native		

### Household Type

	# below RCM	% below RCM
Single Mothers	7,000	79%
Seniors	6,476	26%
Married Couples	16,415	36%
Informal Families	14,905	49%

### Citizenship/Nativity

	# below RCM	% below RCM
Foreign Born, Non-Citizen	12,695	73%
Foreign Born, Naturalized	5,515	39%
Born a US Citizen	32,719	36%

\*\* Minimum waged jobs based on \$13.00 per hour, 40 hours per week, 50 weeks per year. Median household earnings control for elder-led households and household led by persons with disabilities consistent with the Real Cost Measure.