

SOYBEANS

GH00833E3_{BRAND}

RM:
0.08

The following product descriptions and ratings are sourced from the variety's genetic supplier and/or internal data.



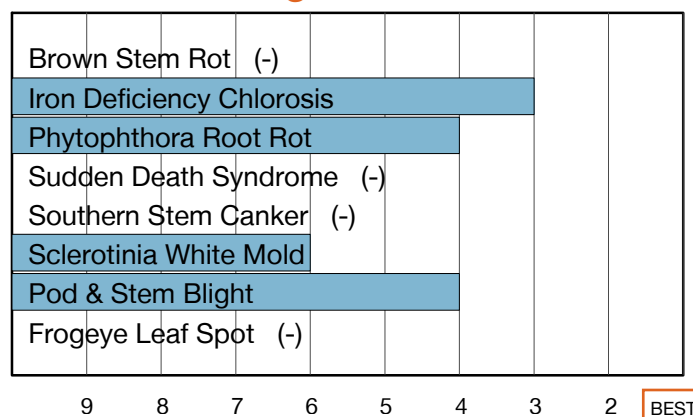
EARLY VARIETY WITH SCN RESISTANCE

- Strong performance in high yield environments
- Solid stress tolerance
- Very good tolerance to Iron Deficiency Chlorosis

Plant Characteristics

Plant Height	Medium
Canopy/Plant Type	Medium-Thin
Branching	Prolific
Growth Habit	Indeterminate
Flower Color	Purple
Pubescence Color	Gray
Pod Color	Brown
Hilum Color	Buff
Chloride Sensitivity	-

Disease Ratings



Agronomic Traits

Emergence	3
Standability	4
Shatter Tolerance	-
Green Stem	-
Estimated Seed Size	-
% Protein at 13% mst.	-
% Oil at 13% mst.	-
Narrow Rows	1
Wide Rows	2

Adaptation to Soil Types

Drought Prone	Best
High pH*	Good
Highly Productive	Best
Moderate/Variable Environments	Best
Poorly Drained	Good

Diseases and Pests

Phytophthora Root Rot (PRR) Source	Rps1a
Soybean Cyst Nematode (SCN) Races	MR3
(SCN) Source	PI88788
Root Knot Nematode (RKN) Incognita	-

For more info or to view product performance data: www.goldenharvestseeds.com (800) 944-7333



Performance assessments are based upon results or analysis of public information, field observations and/or internal Syngenta evaluations. Product performance assumes disease presence.

©2020 Syngenta. Under federal and local laws, only dicamba-containing herbicides registered for use on dicamba-tolerant varieties may be applied. See product labels for details and tank mix partners. Golden Harvest® Soybean varieties are protected under granted or pending U.S. variety patents and other intellectual property rights, regardless of the trait(s) within the seed. Only 2,4-D choline formulations with Colex-D® Technology are approved for use with ENLIST E3® soybeans. ENLIST E3® soybean technology is jointly developed with Dow AgroSciences LLC and MS Technologies LLC. The ENLIST trait and ENLIST Weed Control System are technologies owned and developed by Dow AgroSciences LLC. ENLIST® and ENLIST E3® are trademarks of Dow AgroSciences LLC. The trademarks or service marks displayed or otherwise used herein are the property of a Syngenta Group Company. All other trademarks are the property of their respective owners.

1-9 Scale: 1 = Best, 9 = Worst, (-) = Not Available, NA = Not Applicable.

Adaptation to Soil Types: Best > Good > Fair > Poor; (-) = Not Available.

* Represents an assessment of stand establishment, chlorosis severity and yield performance

Published June 17, 2020. For use until April 30, 2021.