

SOYBEANS

GH0443X_{BRAND}

NEW

RM:
0.4

COMBINES SCN RESISTANCE WITH OUTSTANDING TOLERANCE TO IRON DEFICIENCY CHLOROSIS

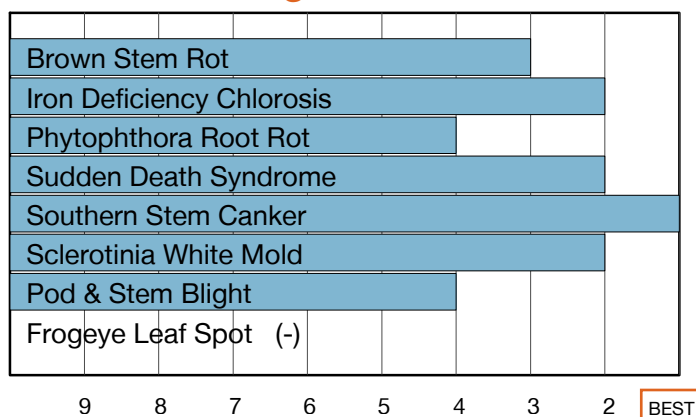


- Excellent standability with a uniform plant height
- Broadly adapted with strong performance in all yield environments
- Great tolerance to Sclerotinia White Mold

Plant Characteristics

Plant Height	Medium-Short
Canopy/Plant Type	Medium
Branching	Moderate
Growth Habit	Indeterminate
Flower Color	Purple
Pubescence Color	Light Tawny
Pod Color	Tan
Hilum Color	Black
Chloride Sensitivity	Excluder

Disease Ratings



Agronomic Traits

Emergence	3
Standability	2
Shatter Tolerance	3
Green Stem	2
Estimated Seed Size	Medium
% Protein at 13% mst.	34.6
% Oil at 13% mst.	18.7
Narrow Rows	1
Wide Rows	2

Adaptation to Soil Types

Drought Prone	Best
High pH*	Best
Highly Productive	Good
Moderate/Variable Environments	Good
Poorly Drained	Good

Diseases and Pests

Phytophthora Root Rot (PRR) Source	Rps1c
Soybean Cyst Nematode (SCN) Races	MR3
(SCN) Source	PI88788
Root Knot Nematode (RKN) Incognita	-

For more info or to view product performance data: www.goldenharvestseeds.com (800) 944-7333



Performance assessments are based upon results or analysis of public information, field observations and/or internal Syngenta evaluations. Product performance assumes disease presence.

©2020 Syngenta. Under federal and local laws, only dicamba-containing herbicides registered for use on dicamba-tolerant varieties may be applied. See product labels for details and tank mix partners. Golden Harvest® Soybean varieties are protected under granted or pending U.S. variety patents and other intellectual property rights, regardless of the trait(s) within the seed. The Roundup Ready 2 Yield®, Roundup Ready 2 Xtend®, and Roundup Ready 2 XtendFlex® traits may be protected under numerous United States patents. It is unlawful to save soybeans containing these traits for planting or transfer to others for use as a planting seed. Roundup Ready 2 Yield® and Roundup Ready 2 Xtend® are trademarks used under license from Monsanto Technology LLC. XtendFlex® is a registered trademark used under license from the Bayer Group. The trademarks or service marks displayed or otherwise used herein are the property of a Syngenta Group Company. All other trademarks are the property of their respective owners.

1-9 Scale: 1 = Best, 9 = Worst, (-) = Not Available, NA = Not Applicable.

Adaptation to Soil Types: Best > Good > Fair > Poor; (-) = Not Available.

* Represents an assessment of stand establishment, chlorosis severity and yield performance
Published December 18, 2020. For use until April 30, 2021.