



Slab Insulation

For Residential Construction



Benefits of R+ Slab Insulation

- ✦ Meets International Energy Conservation Code (IECC) requirements for residential slab insulation for all Climate Zones
- ✦ Plastic Film Facers improve handling and durability of the R+ insulation board and improves water absorption rate
- ✦ R+ Tack Strip Board reduces field labor by precutting the 45 degree bevel for slab edge insulation when installing vertically on the interior of the foundation wall
- ✦ R+ Snap Board reduces field labor by partially cutting the insulation board at 24" widths allowing installers to "Snap" the board in half cleanly without using any tools
- ✦ R+ insulation board protects water proofing during backfilling
- ✦ R+ is highly resistant to the freeze thaw cycle and does not loose its insulating properties²
- ✦ R+ retains nearly twice as much of its insulating properties than XPS over a 15 year time frame³
- ✦ R+ is installed using currently accepted building and construction methods
- ✦ R+ provides more value to the contractor by performing identically as other rigid board insulations at a fraction of the cost



R+ Product Numbers for use as Slab-on-Grade Floor Insulation

R Value Compression	R-10	R-15	Installation and Applications
10 psi Thickness	R+10@10psi 2.6"	R+15@10psi 3.9"	Vertically Installed on Foundation Wall
15 psi Thickness	R+10@15psi 2.4"	R+15@15psi 3.6"	Vertically installed on foundation wall or Horizontally installed under slab in light floor load applications
25 psi Thickness	R+10@25psi 2.3"	R+15@25psi 3.45"	Horizontally Installed under slab for heavy floor loads applications
Board Options	RB- Full Board 4' x 8"	SB- Snap Board 2' x 8'	TS- Tack Strip Board 2' x 8' w/ Beveled Edges

Foot Notes:

1. Savings percentages calculated from the internet published price of XPS at big box stores and the MSRP of R+.
2. Technical Bulletin EPS Below Grade Series 102, EPS Industry Alliance, 2014, Crofton MD, <http://www.epsindustry.org/downloads-documents>
3. Technical Bulletin EPS Below Grade Series 105, EPS Industry Alliance, 2014, Crofton MD, <http://www.epsindustry.org/downloads-documents>



Slab Insulation

For Residential Construction

Distributed By:

Insert Address Label Here

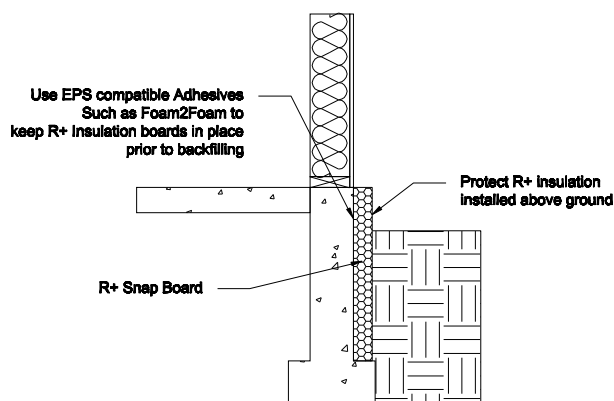
Insulate the Same job...

Reduce Material Costs

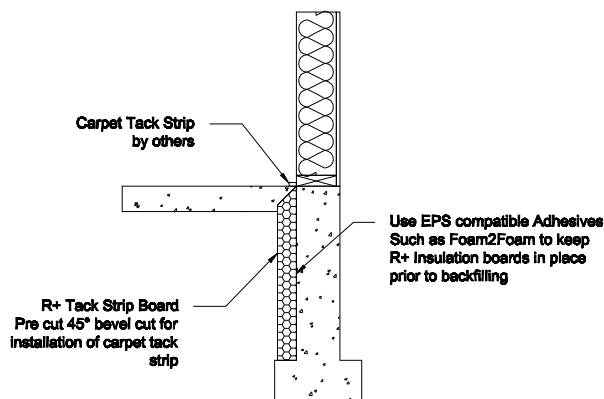
Reduced Labor...

Create Value

Call 1-888-777-8485 for list of wholesalers in your area



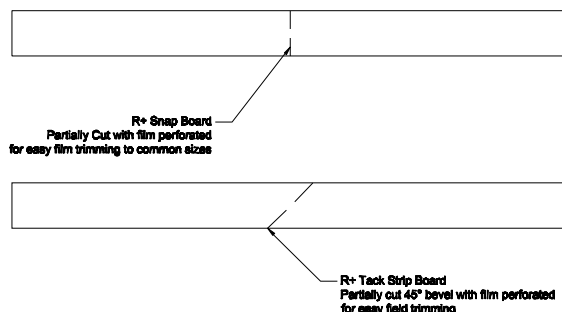
R+ Slab Insulation



R+ Slab Insulation with carpeting tack strip bevel cut

R+ Slab Insulation Features

- ★ Square and beveled edges configured within a 48" wide sheet for immediate use. Sheets are scored to allow for easy field trimming to create 24" sheets
- ★ Range of compressive strengths from 10, 15 and 25 psi available with 40 and 60 psi upon special request
- ★ Range of R-Values with R-10 and R-15 thicknesses available with R-20 and higher available upon request
- ★ R+ **does not** sustain Mold and Mildew growth
- ★ R+ can be manufactured with environmentally friendly Termite and Carpenter Ant deterrent
- ★ Stable R-values over the life of the structure and is resistant to freeze thaw cycles



R+ Physical Properties

Product Number	EPS Type	Compression @ 10% Strain	R-Value per Inch	Water Absorption
Test Method	ASTM C-578	ASTM D1621	ASTM C177	ASTM C272
R+@10psi	EPS Type I	10 PSI	3.85	<4%
R+@15psi	EPS Type II	15 PSI	4.17	<3%
R+@25psi	EPS Type IX	25 PSI	4.35	<2%

R values indicate resistance to heat flow. The greater the value the greater the insulating value.

Federal Trade Commission requires insulation to be published at 75° F mean temperature.

Aged R-Values computed using ASTM C-177 of alternative products and systems should be used when comparing to EPS insulation.

R+ EPS has a flame spread rating of 20 and a smoke developed index of 300 when tested in accordance with ASTM E84/ UL 723 for densities from 0.7—2.0 lb/ft³



Flammability Warning

FMI-EPS's expanded polystyrene (EPS) products are combustible, as are all organic materials. They must not be stored or installed near open flame or any source of ignition. In addition, when EPS installation board is installed in the interior of an occupied structure, it must be protected by a proper thermal barrier, and the installer must review applicable local, state and federal building codes to determine the correct thermal barrier for the particular application



The information provided in this bulletin is presented in good faith, and is believed to be accurate. All statements are made without warranty expressed or implied.

Adjoining Materials Warning

Expanded Polystyrene (EPS) is subject to attack by liquid solvents and most solvent based adhesives and other oil based liquids such as gasoline and diesel. Care should also be taken to separate any coal tar pitch products or coal tar pitch vapors from any direct contact with EPS foam

FMI-EPS, LLC

9456 N McGuire Rd.
280 Rose Street

Post Falls, ID 83854 USA
Jerome, ID 83338 USA

Ph: 208-777-8485
Ph: 208-324-5998

888-777-8485
www.fmi-eps.com