

Your On Your Way to a Hidden Gem

The Gallery Farm



How to get to The Gallery Farm from Kempsey - We Recommend you get your supplies before arriving!!!!

- **Supplies:** Kempsey shopping district is within a 30 minute trip. We recommend [The L-Bo butcher](#) on Elbow St Kempsey best cuts in town and [Cellarbrations](#) for a great selection of beer, wine and spirits with ample parking. Coles, Woolworths, IGA and Aldi supermarkets along with specialty stores featuring local Kempsey produce are also located in town.

Google Maps Link

<https://goo.gl/maps/cdvU6ymjSZrkQFKEA>

33 min (27.9 km)

via Chain O Ponds Rd and Collombatti Rd
Fastest route

Belgrave St

Kempsey NSW 2440

- > Take River St to Spooners Ave in Greenhill

7 min (4.9 km)

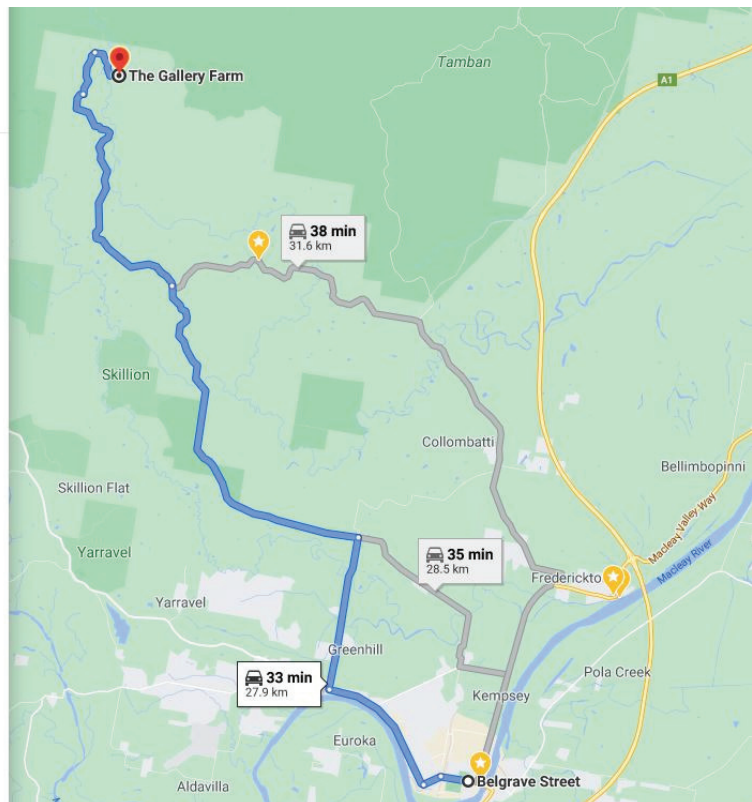
- > Take Chain O Ponds Rd and Collombatti Rd to Ptolemys Access in Collombatti

27 min (23.1 km)

The Gallery Farm

56 Ptolemys Access, Collombatti NSW 2440

These directions are for planning purposes only. You may find that construction projects, traffic, weather, or other events may cause conditions to differ from the map results, and you should plan your route accordingly. You must obey all signs or notices regarding your route.



From Kempsey town drive to Belgrave st & continue straight towards West Kempsey

Follow Belgrave st & cross the railway tracks. Take the 2nd exit on the first roundabout onto Elbow st

Continue on Elbow st to the 2nd roundabout & take the 2nd exit to stay on Elbow st

Continue on Elbow st which turns into river st on the bend

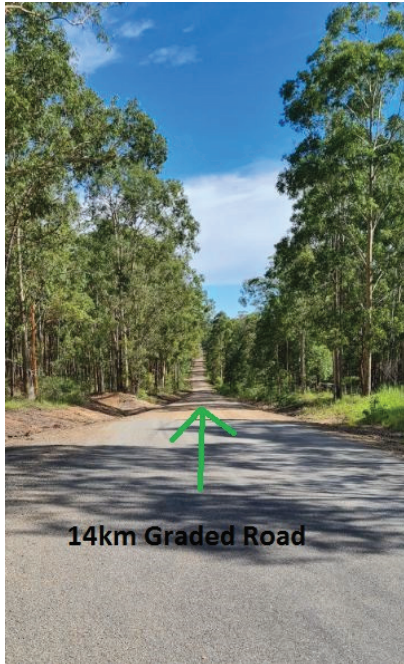
Turn right off River st onto Spooners ave continue 4km



Turn left onto Chain O Ponds rd continue 9.8km



Continue onto Collombatti rd 7.3km make sure you stay left to stay on Collombatti rd at the Bus stop



You will have little mobile phone reception just after this point



Turn left to stay on Collombatti rd 1.2 km



Cross the 1st Bridge and you are almost there.



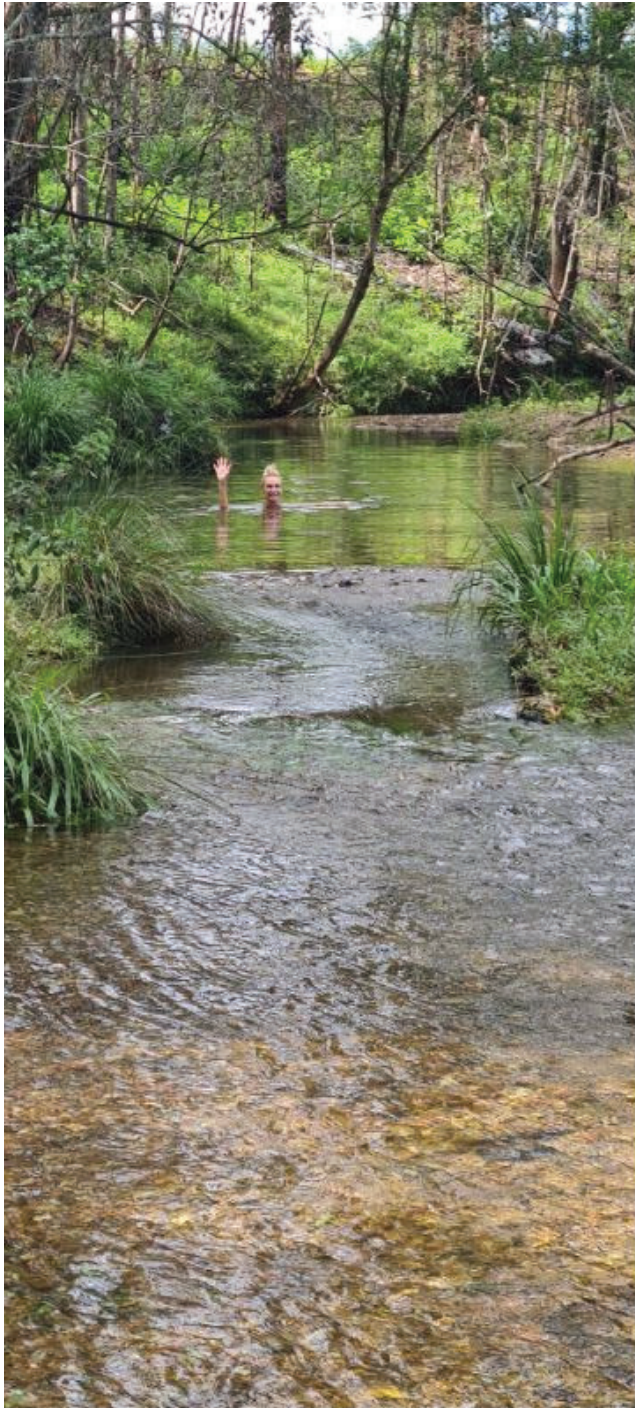
Turn right onto Ptolemys Access 800 m you will cross a little bridge over the creek & The Gallery Farm is the first gate.



Continue down the driveway and cross the dam and drive up to the guest parking in the shed. We will be there to greet you and show you the runnings of the cottage.



Swimming Holes & the Dam



There are plenty of fresh water swimming holes when the creek is up & flowing, we recommend you bring reef shoes if you want to go in for a dip. Reef shoes are also so good for the dam as it is muddy under foot until you get in to deeper water, working on a pontoon for the dam, coming soon.

Wifi Password – TheGalleryFarm

Travelling the local area, if you go out travelling there is another way to come back to the farm through Frederickton. If you are coming back North of Frederickton your GPS will want to take you back this way, but we find the graded road better coming into the farm from West Kempsey, see second map if you want to come in the original way with fastest route to get there.

Frederickton Way

34 min (27.3 km)

via Collombatti Rd

Fastest route

The Garden Bar & Kitchen

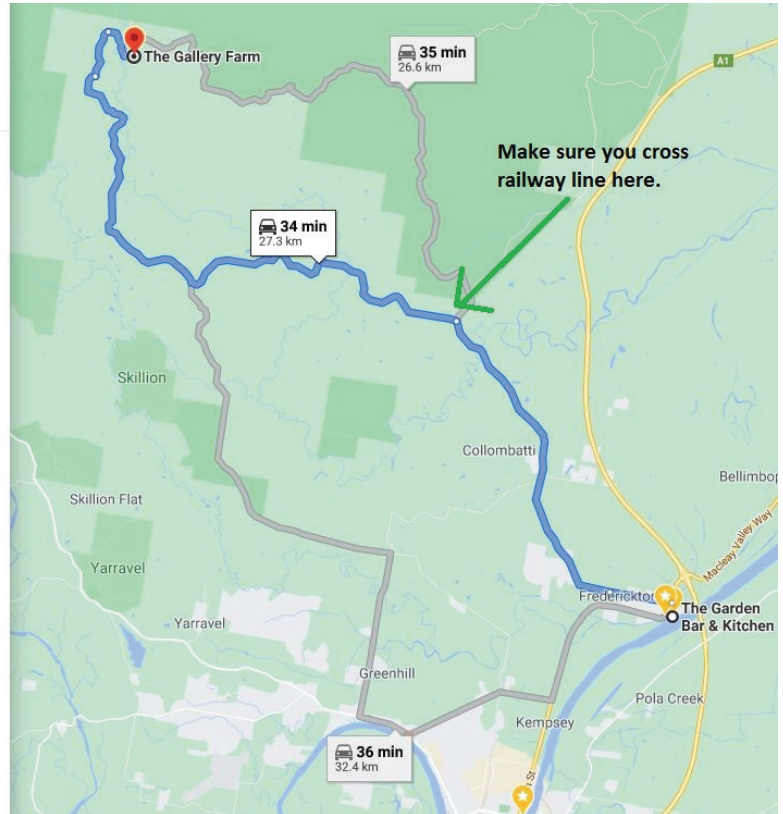
1/5 Remembrance Way, Frederickton NSW 2440

- ↑ Head north on Remembrance Way towards Lawson St
300 m
- ↶ Turn left onto Great N Rd
1.5 km
- ↑ Continue onto Collombatti Rd
8.2 km
- ↶ Turn left to stay on Collombatti Rd
15.2 km
- ↶ Turn left to stay on Collombatti Rd
1.2 km
- ↷ Turn right onto Ptolemys Access
800 m

The Gallery Farm




56 Ptolemys Access, Collombatti NSW 2440

These directions are for planning purposes only. You may find that construction projects, traffic, weather, or other events may cause conditions to differ from the map results, and you should plan your route accordingly. You must obey all signs or notices regarding your route.



Make sure you turn left to stay on Collombatti rd by going over railway line. Do not continue straight onto Tambar rd which will take you into the state forest.

Getting back to farm if you are coming back from the North side of Frederickton.

36 min (32.4 km)   
via Chain O Ponds Rd and Collombatti Rd

The Garden Bar & Kitchen
1/5 Remembrance Way, Frederickton NSW 2440

- Take Macleay St, Macleay Valley Way and North St to Spooners Ave in Greenhill
10 min (9.3 km)
 - Head south-west on Remembrance Way towards Macleay St
24 m
 - Continue onto Macleay St
1.7 km
 - Continue onto Macleay Valley Way
2.6 km
 - Turn right onto Second Ln
1.3 km
 - Continue onto North St
2.4 km
 - Turn right onto River St
1.3 km
- Take Chain O Ponds Rd and Collombatti Rd to Ptolemys Access in Collombatti
27 min (23.1 km)

The Gallery Farm

