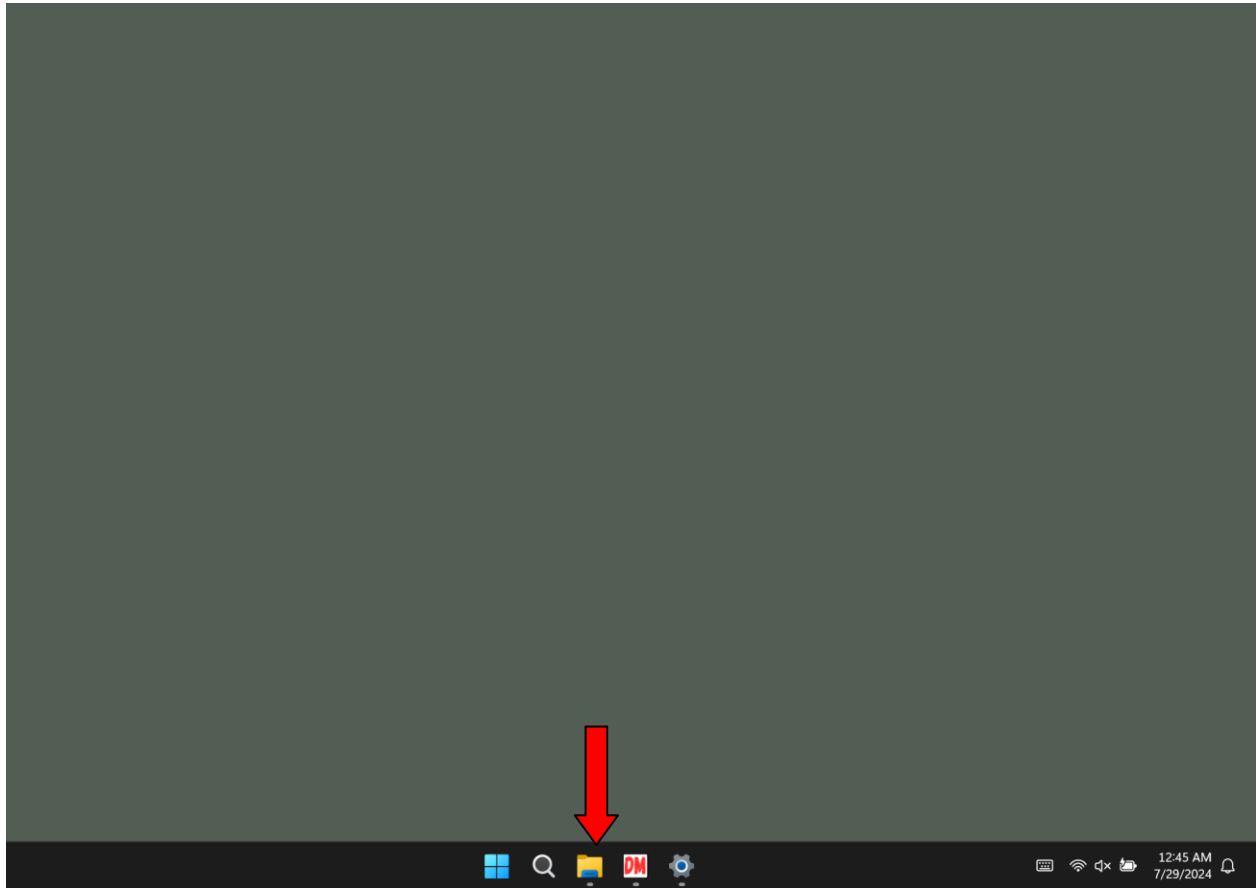


# Calibrating the Bixelon Raffle Ticket Printer

If the alignment of the printing on the raffle tickets (i.e. Queen of Hearts, Jacks and Jokers, Ace of Spades tickets) is printing out of alignment or text is being truncated then the printer needs to be calibrated.

To re-calibrate the Bixelon SLP-DX220 Raffle Ticket Printer do the following:

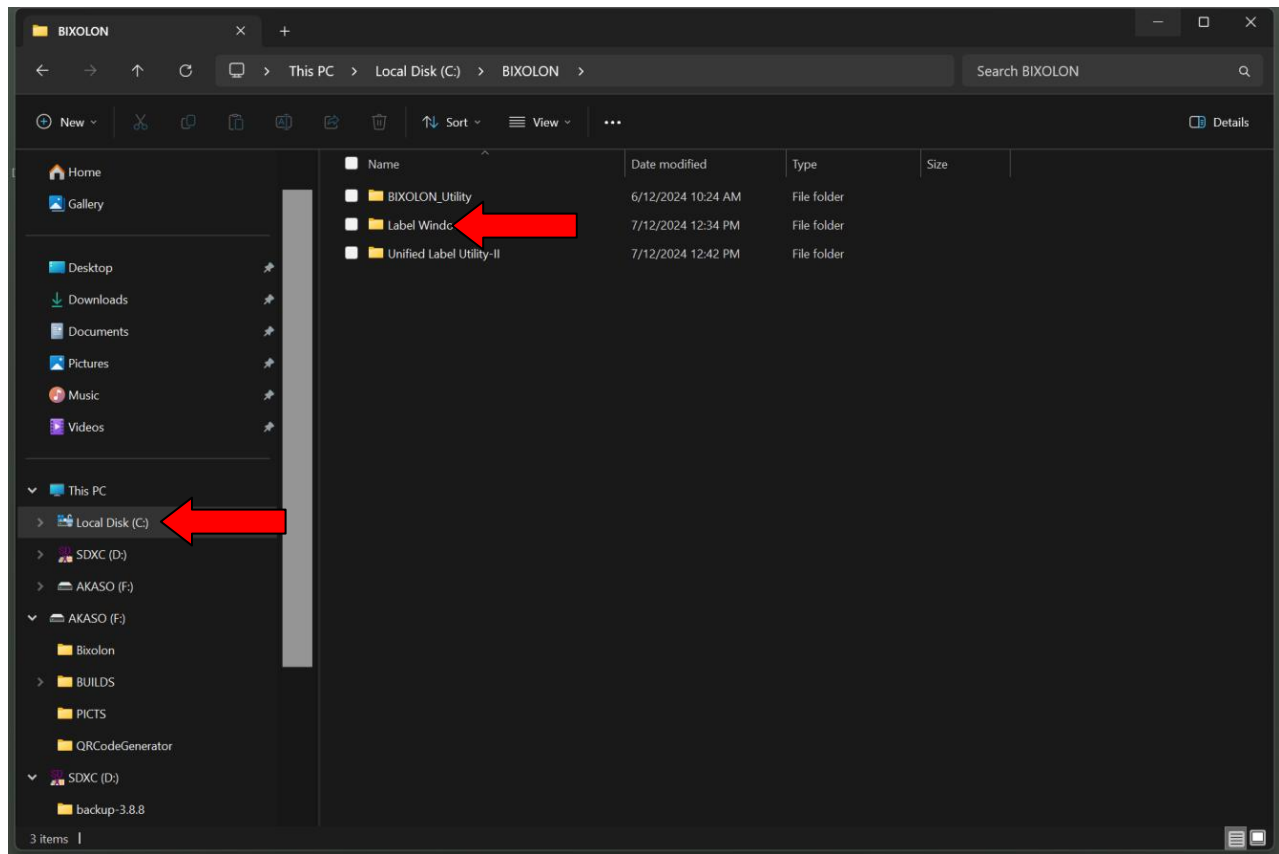
- 1) Swipe up from the bottom of the tablet so the taskbar at the bottom is visible and click on the yellow folder icon:



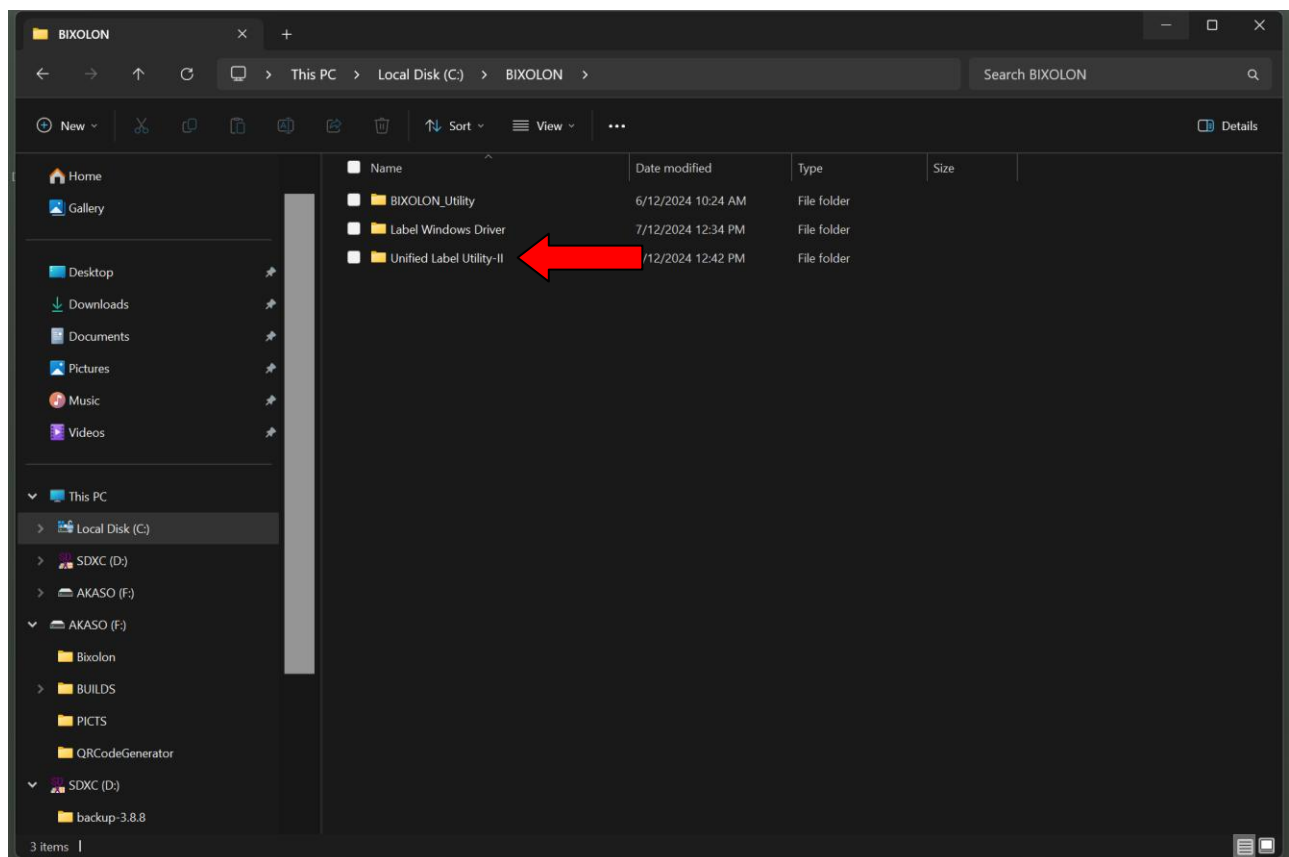
Note: if the yellow folder icon isn't visible then click on the windows icon  then click on the yellow "file explorer" folder icon.

2. A new window will appear; on the left side click on "Local Disk (C:)" then click on the BIXOLON folder icon:

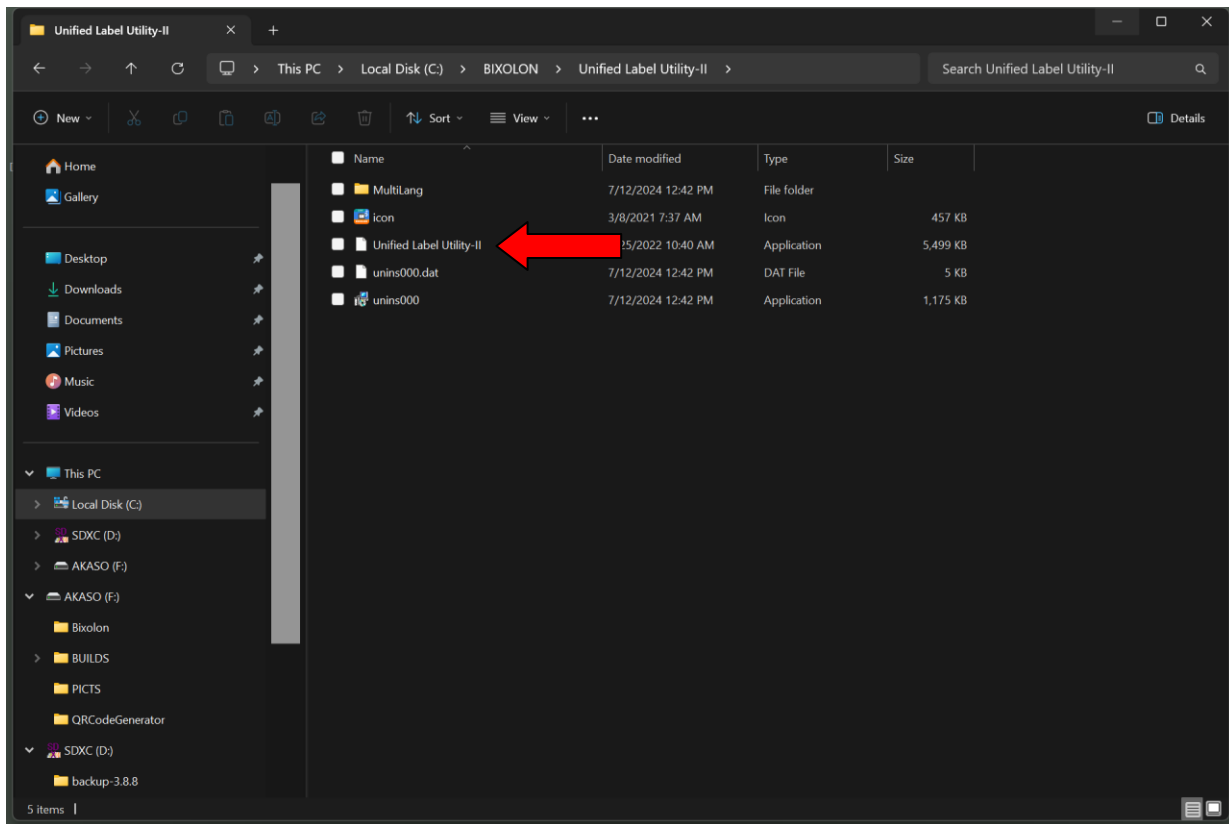
Note: If the BIXOLON folder icon doesn't exist then it needs to be installed; contact Drawings Manager support for additional help.



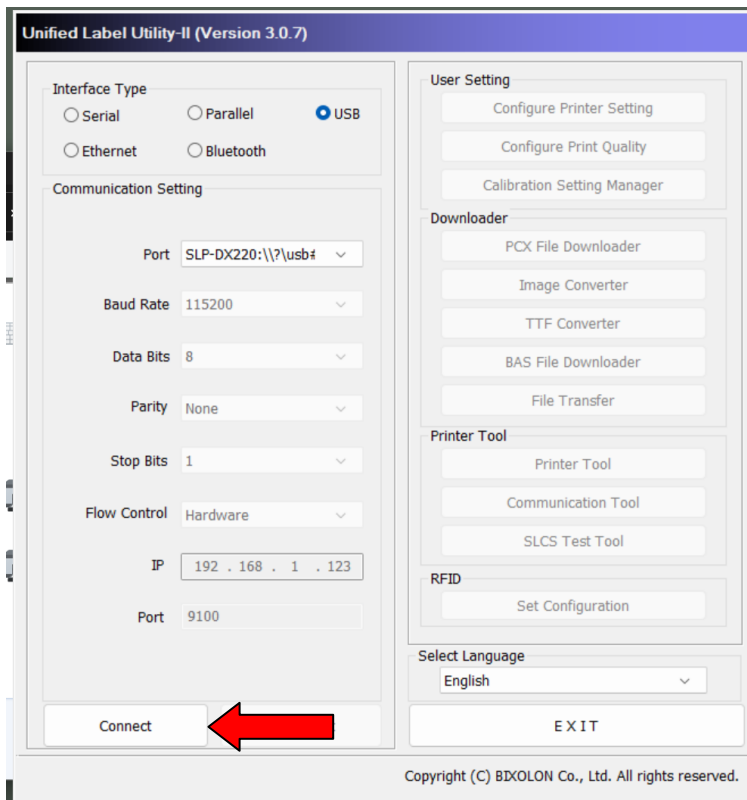
3. From the BIXOLON folder click on the “Unified Label Utility II” folder:



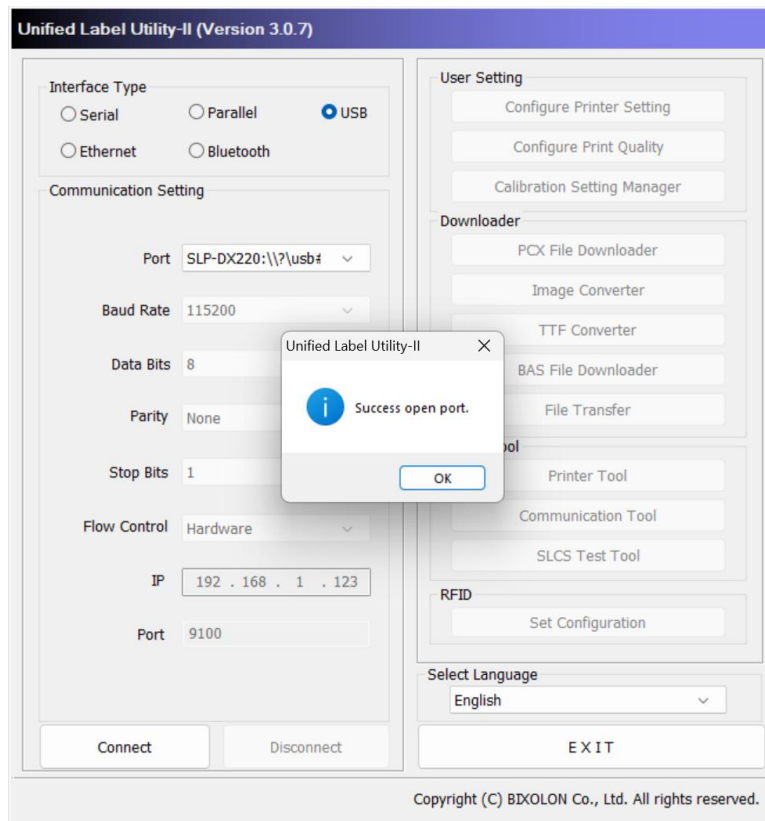
#### 4. Next double click on “Unified Label Utility II” to run the application



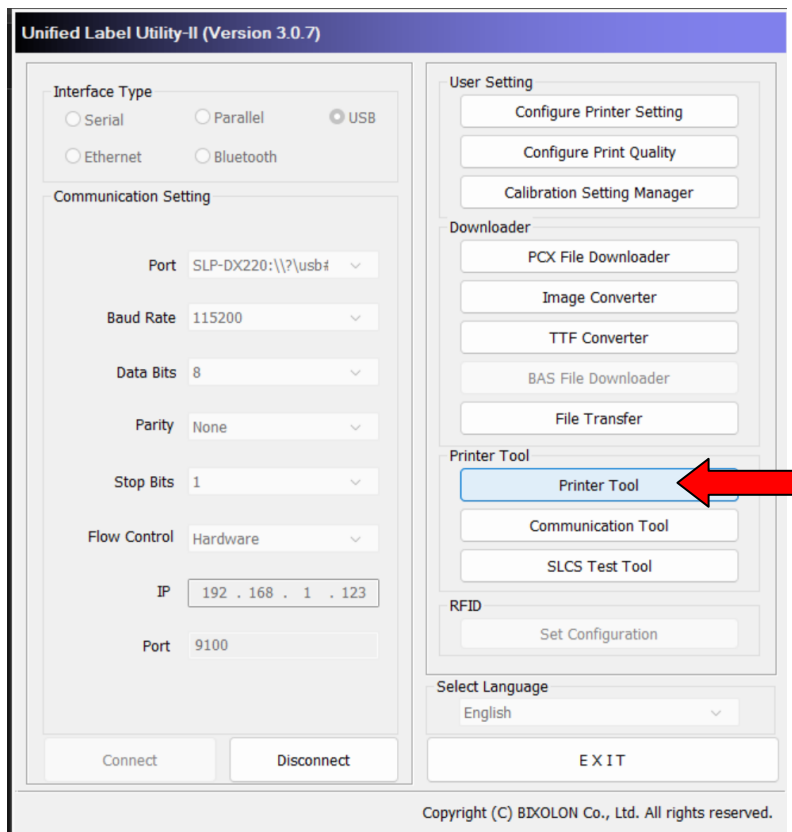
#### 5. The Unified Label Utility will open; click on “Connect”



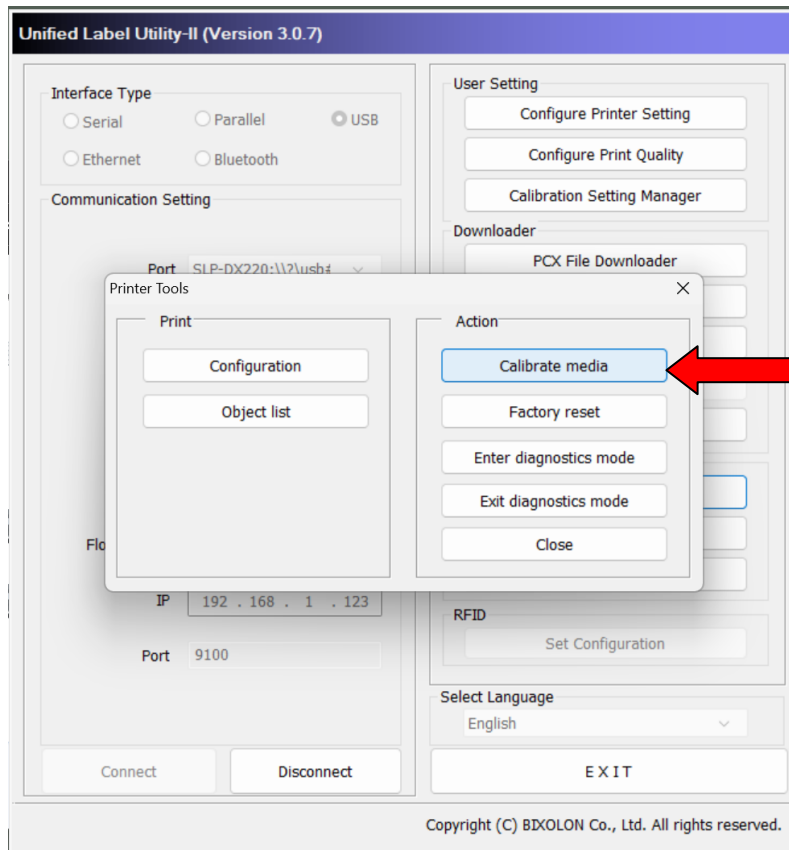
## 6. A message should display saying “Success open port”:



## 7. Click on “Printer Tool”:



**8. Click on “Calibrate media”:**



**9. The printer will print some blank tickets; the calibration is now complete.**

**10. Click on “Close” then “Disconnect” then “EXIT” to exit the application.**