



• P. R. CEILING PRODUCTS •



A Wide Range Metal False Ceiling Products

# P.R. CEILING PRODUCTS

[info@prceilingproduct.com](mailto:info@prceilingproduct.com)

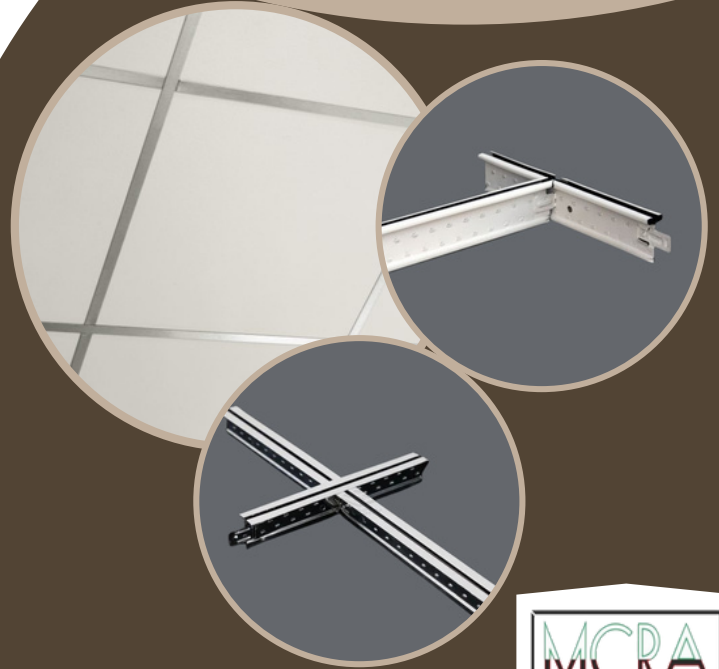
[www.prceilingproduct.com](http://www.prceilingproduct.com)



# SUSPENDED GRID SYSTEM

## SPECIFICATIONS

The Ceiling suspension system shall be exposed lay in system to fit 600mm x 600 mm or 600 mm x 1200 mm ceiling module. It shall be suspended to the soffit by a 4mm diameter adjustable quick fit hanger rod system. Main Tee shall be in 38mm/32mm height exposed portion (polyester coated) shall be 24mm. Cross tee shall be 26mm height and expose portion is 24mm.



# TEE GRID

## PART NAME

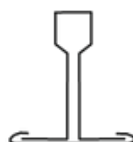
## MAIN TEE

## CROSS TEE

### Heavy Duty



38x24x3600x0.30mm  
Qty/Box-25 Nos.



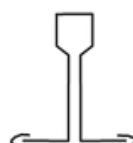
38x24x1200x0.30mm  
38x24x600x0.30mm  
Qty/Box-40 Nos.



### Standard



38x24x3600x0.30mm  
Qty/Box-25 Nos.



26x24x1200x0.30mm  
Qty/Box-50 Nos.  
26x24x600x0.30mm  
Qty/Box-75 Nos.



### Regular



32x24x3600x0.30mm  
Qty/Box-25 Nos.



26x24x1200x0.30mm  
Qty/Box-50 Nos.  
26x24x600x0.30mm  
Qty/Box-75 Nos.



### Regular



32x15x3600x0.30mm  
Qty/Box-25 Nos.



26x15x1200x0.30mm  
Qty/Box-50 Nos.  
26x15x600x0.30mm  
Qty/Box-75 Nos.



### Wall Angle



24x24x3000x0.40mm  
Qty/Box-50 Nos.



15x15x3000x0.40mm  
Qty/Box-50 Nos.

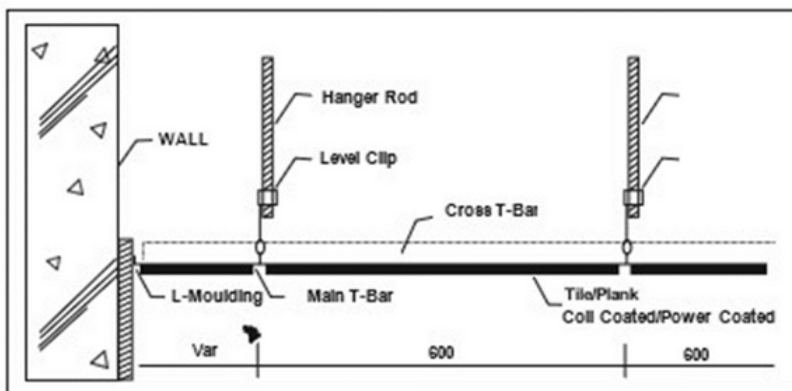




# LAY-IN SYSTEMS



MCRA Lay-in false Ceiling System with steel/aluminum tile 595 mm X 595 mm is manufactured out of 0.50 mm thick polyester coil coated galvanized steel 120 gsm zinc coating or 0.7mm aluminum powder coated with 60 microns polyester paint in AA5050, AA3105 alum.







# CLIP IN SYSTEMS



## SPECIAL FEATURES

- MCRAClip- in FalseCeiling System with steel/aluminiumtile (600 mmx 600 mm) is manufactured out of 0.50 mm thickpolyester coil coated galvanizedsteel 120 gsmzinc coating or 0.7mm aluminium powder coated with 60 microns polyester paint inAA5050, AA3105 orAA1050 alum. alloy.

For More Information  
[info@prceilingproduct.com](mailto:info@prceilingproduct.com)

Visit Us  
[www.prceilingproduct.com](http://www.prceilingproduct.com)





P. R. CEILING PRODUCTS

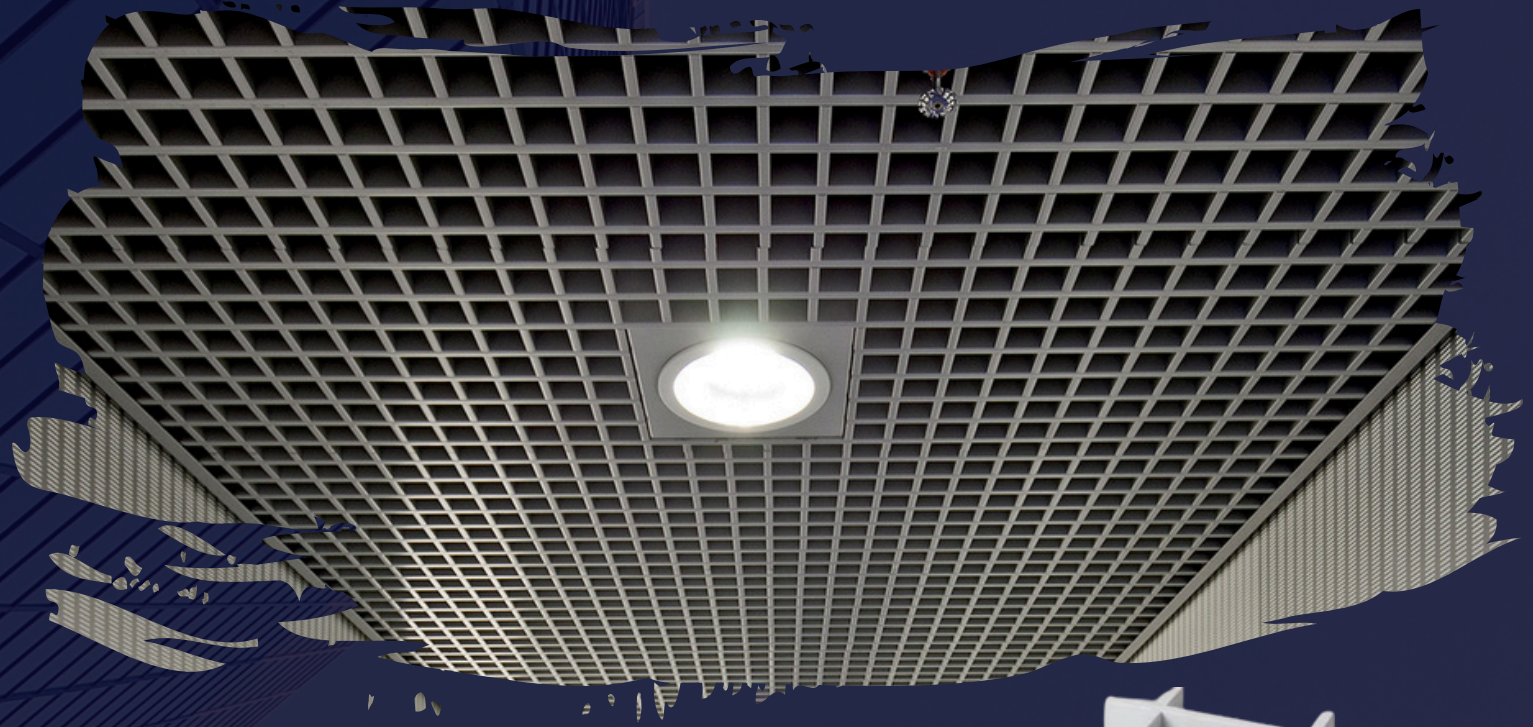


# CLIP IN SWING DOWN SYSTEM

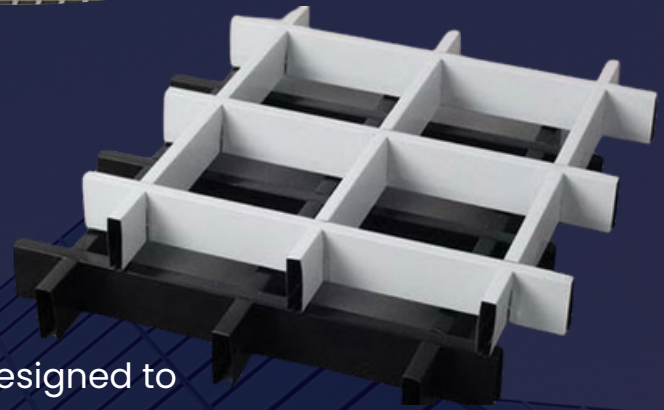
MCRA Clip-in false Ceiling System made of Galvanized steel / Aluminium swing down tiles ( 600 mm x 600 mm) are manufactured out of 0.50 mm thick polyester coil coated steel 100 / 120gsm zinc coating or powder coated with 60 micron polyester paint. Aluminium tiles are manufactured out of 0.70mm thick aluminium sheets with powder coated 60 micron polyester paint. These tiles can have beveled or straight edges.







# OPEN CELL CEILINGS



MCRA aluminum open cell ceiling tiles are designed to lay onto 15mm Tee Grid. These tiles can be used without any tee grid system also. The new Lock-In system features open cell ceiling panels with no frame or border around them. The panels simply connect to each other with easy lock in system of main and cross.

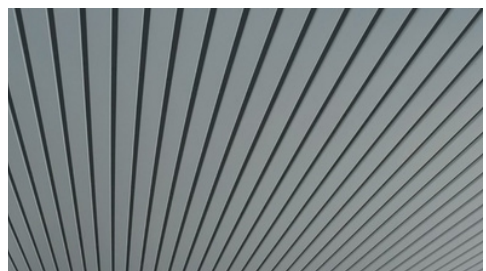
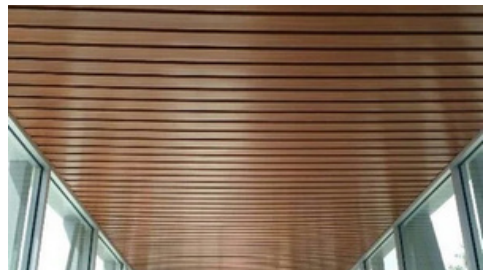
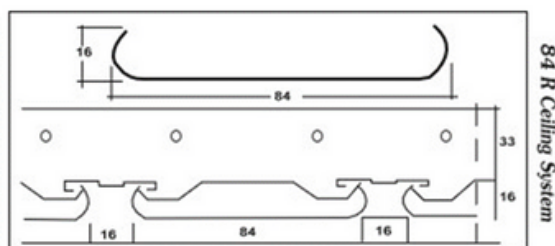




# 84 R LINEAR CEILING SYSTEM

## Specification

84 R ceiling system comprises of 84 mm x 16 mm panels without flush profile (for 100 mm module only) roll formed out of metal coils





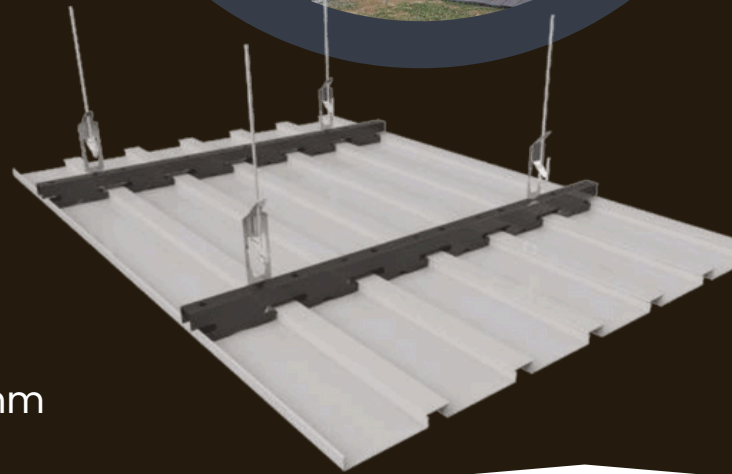


P. R. CEILING PRODUCTS



# 84 C / 184 C LINEAR SYSTEM

MCRA 84 C / 184 C ceiling system comprises of 84 / 184 mm x 12.5 mm panels with 23.9 mm flange roll formed out of metal coils galvanized coil coated steel or aluminium alloy. Panels are fixed on to roll formed .



[www.prceilingproduct.com](http://www.prceilingproduct.com)



[info@prceilingproduct.com](mailto:info@prceilingproduct.com)





P. R. CEILING PRODUCTS

# 150 F LINEAR CEILING SYSTEM

## Specification

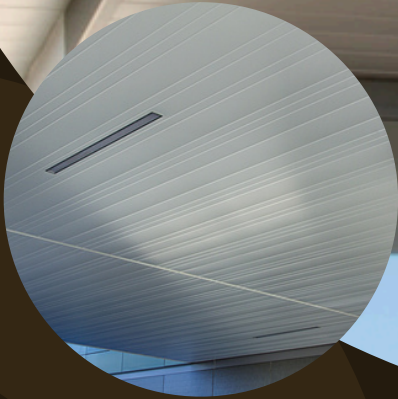
MCRA 150F ceiling system comprises of 150 mm X 17 mm. Panels are fixed on the roll formed out of metal coils galvanized coil coated steel or aluminium alloy. carriers 34.5 mm wide X 48 mm deep out of 0.9 mm Aluminium or 0.5mm galvanised steel with cutouts to hold the panels in module of 150 mm at maximum 1.5 m c/c without insulation and at maximum 1.2 m c/c with insulation. Carriers are suspended from the roof or truss by 4 mm dia galvanized steel wire rod hanger with special height adjustment suspension clip at max. 1.2 m c/c. Hangers are fixed to the roof by ceiling brackets. Panels are available in lengths up to maximum 5 m to suit site dimensions. Edge profiles or wall angles are 24 mm X 24 mm and match the colour of the panel.



MCRA  
A Wide Range Metal False Ceiling Products



P. R. CEILING PRODUCTS



# 150 C LINEAR CEILING SYSTEM

MCRA 150 C ceiling system comprises of 150 mm X 15 mm.

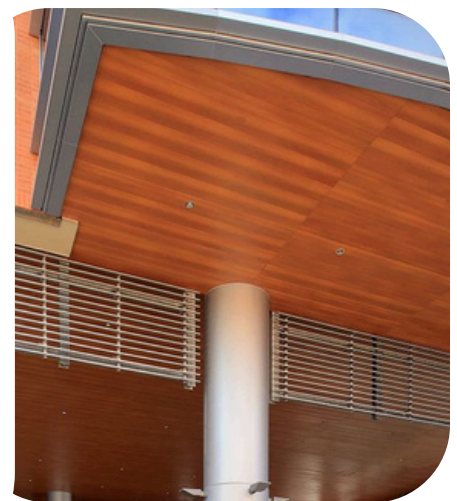
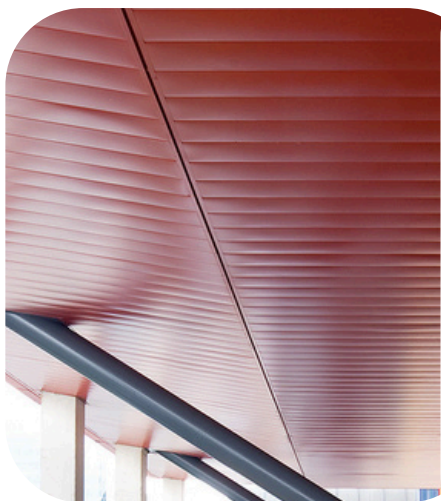
Panels are made of roll formed metal galvanized coil coated steel or aluminium alloy 3105 coils with thickness 0.5mm or 0.7 mm. Aluminium Panels shall be powder coated with 60 microns polyester paint coating on front side or 20 microns front side and 8 microns backside for pre-coated G.I coils.





# 300 C LINEAR CEILING SYSTEM

MCRA300 C ceiling system comprises of 300mm wide x 30 mm. Panels are made of roll formed 0.5 / 0.7mm thick Aluminium sheet or 0.5 mm thick coil coated G.I sheets with bevel edge, panel length shall be customized.







# SUN LOUVER SYSTEM



MCRA Sun louver system is a highly functional, yet architecturally pleasing system that can add color and exciting design effects to a building façade. The system is available with panel set at the range of angles and a wide range of colors and size. Also, MCRA sun louver system provides for flexibility in design, easy maintenance and fast installation.



## Get in Touch

[info@prceilingproduct.com](mailto:info@prceilingproduct.com)  
[www.prceilingproduct.com](http://www.prceilingproduct.com)







# BAFFLE CEILING



We are manufacturing a quality range of Baffle Ceiling. Ideal for controlling sound reverberation from hard surfaces, these baffles are extremely useful in commercial and industrial areas. **MCRA** offers a variety of high performance acoustic hanging baffles in different sizes and shape. Baffle Ceiling is useful for many different types of area and application.

## Get in Touch

[info@prceilingproduct.com](mailto:info@prceilingproduct.com)  
[www.prceilingproduct.com](http://www.prceilingproduct.com)





# Hook On Ceiling System

Providing and Fixing MCRA, Hook-on False ceiling system comparing of Hook-on Tile of 600x600 mm or 600x1200 mm made of Aluminium alloy 3105AA to thickness 0.5mm to 0.9mm or G.I 0.5mm with 60-80 microns RAL 9003 epoxy powder coating. Hooked to 1 mm thick Gi hook on Z profile of 18x50x18 mm, fixed perpendicularly to 1 mm thick GI main channel of size 20x50x50 mm by hook on Z profile. 1 mm thick Main C channel is installed at 1.2 mtr centre to centre by 6mm dia galvanized thread rod. Hook on tile can be plain / perforated as per requirement of acoustic properties.

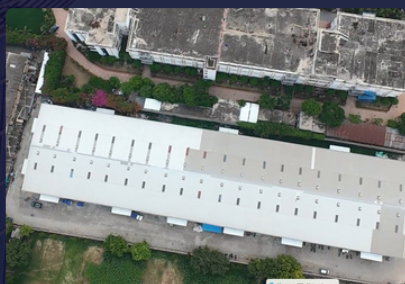


[www.prceilingproduct.com](http://www.prceilingproduct.com)



[info@prceilingproduct.com](mailto:info@prceilingproduct.com)





Stamp



[info@prceilingproduct.com](mailto:info@prceilingproduct.com)



[www.prceilingproduct.com](http://www.prceilingproduct.com)