

MIDWEST RAKE[®]

COATINGS APPLICATION TOOLS, APPLICATORS & SUPPLIES



FAMILY OWNED AMERICAN TOOL COMPANY SINCE 1872



Seymour Midwest is a family-owned, global supplier to the hand-tools market, providing both innovative solutions and time-tested products from our manufacturing facilities in Indiana and Tennessee.

The quality, dependability, and performance of our products meet the high standards of those who use tools everyday: contractors, handymen, farmers, ranchers, landscapers and others. Our diverse selection of products and brands allows our customers to order all of their tool needs from a single source.

Beyond best-in-class products, Seymour Midwest is also known as a leader in outstanding customer service, product training, and technical support in all of our business segments.

As a family-owned company, we believe in the values of integrity, quality, commitment, and innovation. We work hard to achieve performance that sets a standard of excellence and to build relationships with our customers that endure, not just because it is good business, but because it is the right thing to do. Today the family-owned company sells over 3,500 tools and 8,000 different repair handles to customers worldwide.

The Midwest Rake® brand is proud to be one of the “founding fathers” in manufacturing quality tools for those contractors who apply and finish protective industrial and marine floor and surface coatings and those concrete “artisans” who have changed the world of concrete forever with their decorative concrete talents.

MIDWEST RAKE®

- **Innovative high quality tools for the coatings industry.**
- **Widest selection of pro-grade tools and supplies for applying coatings and decorative concrete.**
- **Smart new merchandising solutions and displays.**
- **Dedicated and knowledgeable local sales support to help you grow your business.**

| | |
|--|--------------|
| Brooms, Brushes & Scrapers..... | 30 |
| CAM® / Gauge Rakes..... | 17-19 |
| Footwear..... | 4-6 |
| Merchandising Solutions..... | 35 |
| Miscellaneous Tools..... | 32-33 |
| Mixers & Measuring Wheels..... | 34 |
| Poles & Extension Handles..... | 31 |
| Roller Covers & Frames / Chip Brushes | |
| <i>Specialty Roller Covers.....</i> | <i>22-23</i> |
| <i>Roller Covers.....</i> | <i>24</i> |
| <i>Chip Brushes.....</i> | <i>24</i> |
| <i>Mini Rollers and Frames.....</i> | <i>24</i> |
| <i>Roller Gauges & End Caps.....</i> | <i>25</i> |
| <i>Frames.....</i> | <i>25</i> |
| Spiked / Stub & Ribbed Rollers..... | 26-29 |
| Squeegees | |
| <i>Miscellaneous.....</i> | <i>7</i> |
| <i>EasySqueegee®.....</i> | <i>8</i> |
| <i>Speed Squeegee®.....</i> | <i>9</i> |
| <i>Application Squeegees / Replacement Blades.....</i> | <i>10-11</i> |
| <i>Speed Squeegee® HD.....</i> | <i>12-16</i> |
| Trowels, Smoothers & Spreaders..... | 20-21 |

SURESPIKES®

SIMPLE CHANGES... **BIG DIFFERENCE!**

Our new **SURESPIKES®** spiked shoes are certain to become the industry standard when compared to competitive "one-size-fits-all" polypropylene footwear available today.



CUSTOMER TESTIMONIAL:

I would like to tell how great the SURESPIKES® perform for me. I was coating a floor that already had a trowel down epoxy installed. The new coating was to apply a full flake epoxy floor over what was already installed. I put on a slip-on spike as I normally do and started squeegeeing the epoxy. I noticed that I was slipping and sliding on the floor. The slip-on spikes work fine when the concrete doesn't have a previous coating. I felt unsafe to continue so I stopped my application and put on the SURESPIKES® and my slipping stopped.

I was able to continue the process of squeegeeing with another person back-rolling and I was able to walk back out to broadcast the flake without any slipping. The SURESPIKES® made it safe for me to install this floor.

- Bill J, Minnesota



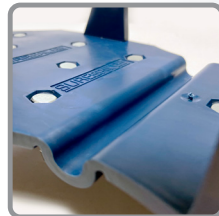
ANGLED SPIKES PROVIDE MORE STABILITY AND DECREASE THE CHANCES OF SLIPPING & FALLING (PATENT PENDING)



1-INCH HARDENED STEEL SPIKES AND NYLOC NUTS PROVIDE IMPROVED DURABILITY AND SPIKES STAY SHARPER LONGER



TOE SPIKES PREVENT THE TIP OF THE SHOE FROM CONTACTING THE FLOOR



FLEXIBLE LIVING HINGE PROVIDES COMFORT & FLEXIBILITY



TUG & SNUG RUBBER STRAPS ARE QUICK, EASY, AND EFFICIENT WHEN COMPARED TO CLOTH STRAPS AND BUCKLES



"ONE-SIZE-FITS-ALL" IS PROVEN TO FIT ALMOST ANY SIZE SHOE OR BOOT

| SMW # | DESCRIPTION | UPC | PACK QTY |
|-------|---|--------------|----------|
| 46195 | SURESPIKES® Spiked Shoe | 046385461951 | 6 |
| 46198 | Replacement Spikes for 46195 (Set of 28 - 14 for Each Shoe) | 046385461982 | 1 |
| 46199 | Replacement Straps for 46195 (Set of 4 - 2 for Each Shoe) | 046385461999 | 1 |



"Flexible Bed" Spiked Shoes

- Revolutionary - perfect fit, balance and flexibility
- For use with high performance floor coatings
- The safest spiked shoes available
- Snap-lock buckle system

Made for Midwest Rake® by



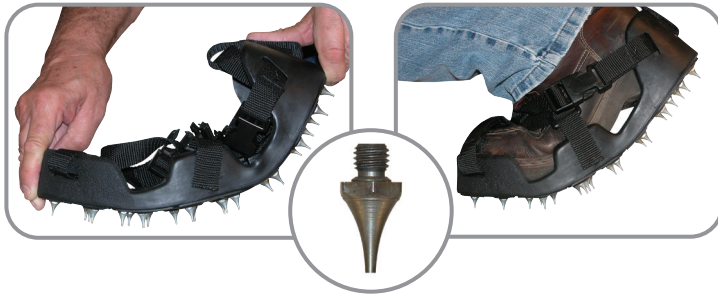
Korkers



MADE IN USA



- 20 replaceable spikes per shoe
- Toe and heel guards
- Fits like a shoe



SHARP TIP Flexible Bed Spiked Shoes

| Item No. | Description |
|----------|---|
| 46141 | Size Medium (Shoe size 8 to 9-1/2) |
| 46142 | Size Large (Shoe size 10 to 11-1/2) |
| 46143 | Size Extra-Large (Shoe size 12 to 13-1/2) |
| 46129 | Replacement Spikes (set of 40) |

1/2" spike length on sharp tip

ROUNDED TIP Flexible Bed Spiked Shoes

| Item No. | Description |
|----------|---|
| 46151 | Size Medium (Shoe size 8 to 9-1/2) |
| 46152 | Size Large (Shoe size 10 to 11-1/2) |
| 46153 | Size Extra-Large (Shoe size 12 to 13-1/2) |
| 46130 | Replacement Spikes (set of 40) |

7/8" spike length for use with high-build, cementitious and decorative concrete toppings. No more punctured primer coats!

Black Spiked Shoes

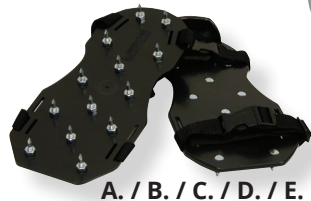
- Durable solvent-resistant polypropylene
- Snap-lock buckle system
- Sharp or rounded tip spikes
- 3/4", 1", 1-1/2" & 2" spike lengths
- 13 specially placed spikes per shoe
- Replacement spikes (see below)

Steel Spiked Shoes

- More flexible and durable
- Snap-lock buckle system
- 3/4" or 1" spike lengths
- Replacement spikes (see below)



Non-puncturing rounded tip available



A. / B. / C. / D. / E.



F. / G.

Red "Acid-Resistant" Spiked Shoes

- 3/4" acid-resistant stainless steel spikes
- Acid-resistant foot beds
- Snap-lock buckle system
- Replacement sharp spikes (see below)



H.

Asphalt Shoes

- Heavy, riveted felt-soled shoes (pair)
- Contractor's choice for comfort and protection



I.

| Item No. | Description |
|----------|--|
| A. 46106 | Black Spiked Shoes 3/4" Sharp Spikes (Pair) |
| B. 46107 | Black Spiked Shoes 1" Sharp Spikes (Pair) |
| C. 46110 | Black Spiked Shoes 1-1/2" Sharp Spikes (Pair) |
| D. 46111 | Black Spiked Shoes 2" Sharp Spikes (Pair) |
| E. 46112 | Black Spiked Shoes 1" Rounded Spikes (Pair) |
| F. 46103 | Steel Spiked Shoes with 3/4" Sharp Spikes (Pair) |
| G. 46104 | Steel Spiked Shoes with 1" Sharp Spikes (Pair) |
| H. 46108 | Red "Acid-Resistant" Sharp Spiked Shoes (Pair) |
| I. 46102 | Riveted Asphalt Shoes (Pair) |

| Item No. | Description |
|----------|--|
| 46120 | Replacement Straps for A, B, C, D and G (Set of 4 - 2 Each Shoe) |
| 46121 | Replacement Straps for E and F (Set of 6 - 3 Each Shoe) |
| 46122 | 1" Rounded Tip Replacement Spikes for D (Set of 26 - 13 / Shoe) |
| 46125 | 3/4" Sharp Tip Replacement Spikes for A & E (Set of 26 - 13 / Shoe) |
| 46126 | 1" Sharp Tip Replacement Spikes for B & F (Set of 26 - 13 / Shoe) |
| 46127 | 1-1/2" Sharp Tip Replacement Spikes for C (Set of 26 - 13 / Shoe) |
| 46128 | 3/4" Acid Resistant Replacement Sharp Spikes for G (Set of 26 - 13 / Shoe) |

Concrete Finishing & Resinous Floor Coating Shoes

It's never been easier to install epoxy coatings or self-leveling and decorative overlays. With a patented design, Shoe-In™ Pro shoes are a fantastically simple and affordable solution with multiple applications. Hands free! Put an end to frustrations with straps, buckles and adjustments on traditional floor finishing shoes. Goes over your existing shoes or boots. Stays snug whether you're standing or kneeling. Wide base for stability. Allows you to take protective shoes on and off as needed to get the job done.

APPLICATIONS INCLUDE:

Installing Epoxy Coatings | Installing Concrete & Screed Floors Including Decorative Overlays
Industrial Environments | Renovations or Removals | Any Area Where Flooring Needs Protecting



FLAT STYLE

FOR CONCRETE INSTALLATION. NO TREAD MARKS OR HEEL MARKS. IDEAL FOR DECORATIVE CONCRETE STAMPING AND GENERAL SURFACE TROWELING.



SHARP SPIKED STYLE

3/4" - FOR RESINOUS / EPOXY FLOOR COATING INSTALLATION. MARK-FREE INSTALLATIONS. SHARP OR ROUNDED REPLACEMENT SPIKES ARE AVAILABLE.



ASPHALT STYLE

FOR ASPHALT INSTALLATION. NO TREAD MARKS OR HEEL MARKS. IDEAL FOR ASPHALT / BLACKTOP SEALING.

Item No. Description

| | |
|-------|--|
| 46161 | Concrete Finishing Shoe - Medium |
| 46162 | Concrete Finishing Shoe - Large |
| 46163 | Concrete Finishing Shoe - Extra- Large |
| 46170 | Spiked Shoes - 3/4" Sharp - Small |
| 46171 | Spiked Shoes - 3/4" Sharp - Medium |
| 46172 | Spiked Shoes - 3/4" Sharp - Large |

Item No. Description

| | |
|-------|---|
| 46173 | Spiked Shoes - 3/4" Sharp - Extra-Large |
| 46131 | Replacement Spikes - 3/4" Sharp (Set of 32 - 16 Per Shoe) |
| 46132 | Replacement Spikes - 1" Rounded (Set of 32 - 16 Per Shoe) |
| 46165 | Asphalt Shoe - Size Small |
| 46166 | Asphalt Shoe - Size Medium |

SIZING - SELECT YOUR SIZE TO FIT OVER EITHER BOOTS OR SNEAKERS

SMALL

FITS BOOT SIZE 8 AND UNDER
FITS SNEAKER SIZE 8 AND UNDER

MEDIUM

FITS BOOT SIZE 9 AND UNDER
FITS SNEAKER SIZE 9 AND UNDER

LARGE

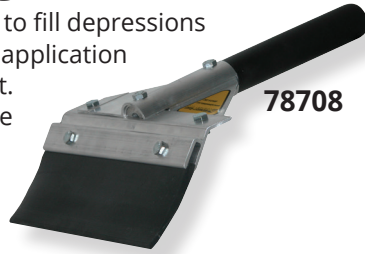
FITS BOOT SIZES 10 TO 11
FITS SNEAKER SIZE 10 TO 12

EXTRA-LARGE

FITS BOOT SIZES 12 TO 16
FITS SNEAKER SIZE 13 TO 16

Hand-Held Squeegee

The hand-held squeegee is used to fill depressions and cracks in a floor prior to the application of any protective coating product. The blade is clamped in a durable 8" wide aluminum frame, not bolted through, making it easy to replace. The handle is a 6" non-slip vinyl grip over an aluminum core.



| Item No. | Description |
|----------|--|
| 78708 | Hand-Held Squeegee, 3" Flexible Rounded Edge Neoprene Blade |
| SP50070 | Replacement Blade for 78708 |
| 78709 | Hand-Held Squeegee, 2" More Rigid Square Edge Neoprene Blade |
| SP50129 | Replacement Blade for 78709 |
| 78108 | 8" Hand-Held Squeegee Frame |

Crack Filler Squeegees

Push/Pull V-Crack Filler Squeegee

The "V" is at a 70 degree angle, using a 1/4" x 2" neoprene rubber blade. The 2" height adds greater containment and control of material.



Lightweight U-Crack Filler Squeegee

This squeegee is easy to use and is great for filling cracks prior to applying floor coatings or seal coating material. The replaceable blade has an inside width of 2-1/2". The blade height is 1-1/4".



For Crack Filler Squeegee Handle Options See Page 31

| Item No. | Description |
|----------|-------------------------------------|
| 46002 | Lightweight U-Crack Filler Squeegee |
| SP50121 | Replacement Blade (for 46002) |
| 46001 | Heavy-Duty U-Crack Filler Squeegee |
| SP50120 | Replacement Blade (for 46001) |
| 46005 | Push / Pull V-Crack Filler Squeegee |
| SP50122 | Replacement Blade (for 46005) |

Heavy-Duty U-Crack Filler Squeegee

Steel frame with a 5/16" x 2-1/4" neoprene rubber blade. The 9-1/2" deep by 3" U-shaped cavity holds plenty of material. Replacement blades are available.



Foam Squeegees

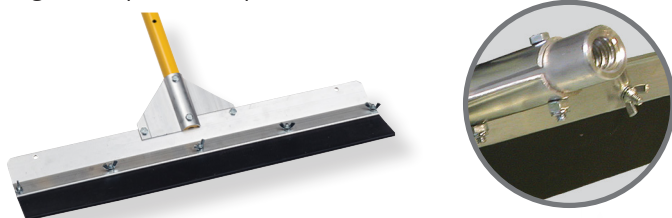


Double edge foam squeegee with tapered handle adapter. Galvanized steel frame with reinforced handle socket.

| Item No. | Description |
|----------|----------------------------|
| 47220 | Squeegee - Foam Blade, 18" |
| 47222 | Squeegee - Foam Blade, 22" |
| 47224 | Squeegee - Foam Blade, 30" |

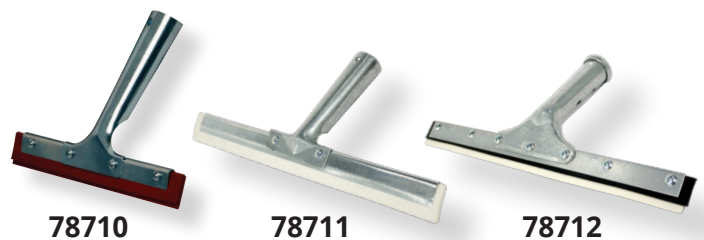
Topping and Underlayment "Super Squeegee"

A 24" low-angle / clamp style aluminum frame with a durable aluminum gusset bracing system is combined with a rounded edge, 3" exposed neoprene rubber blade.



| Description | Blade Size 24 in. | Blade Size 36 in. |
|---|-------------------|-------------------|
| Squeegee with Threaded Handle Adapter | 78601 | 78603 |
| Squeegee with 66" Powder-Coated Aluminum Handle | 78602 | 78604 |
| Replacement Blade | SP50071 | SP50072 |

Window Squeegees



Our window squeegees contain a flat non-marking Nitrile blade, superior & less expensive than red rubber. Can be used as a hand-tool or with a tapered wood handle.

| Item No. | Description |
|----------|--------------------------------------|
| 78710 | 10" Window Squeegee |
| 78711 | 12" White Window Squeegee |
| 78712 | 12" White Heavy-Duty Window Squeegee |
| SP50130 | Replacement Blade for 78710 |

EASYSQUEEGEE®

CLEANABLE & REUSABLE

US PATENT 10,165,923

PRECISION APPLICATION SQUEEGEE SYSTEM

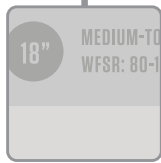
FINALLY A TRULY CLEANABLE & REUSABLE PRECISION APPLICATION SQUEEGEE SYSTEM

The **EasySqueegee®** provides industry leading precision, predictability and versatility when compared to competitive products.

The **self-locating** & **self-leveling** blades ensure your blade is straight, level and in perfect contact with the floor every time.

The eight unique engineered blades provide a level of versatility and jobsite application options not currently available from any competitive application squeegee tool today.

Cured Coatings Release technology ensures the frame is reusable regardless of the material (Epoxy and Urethanes) you're putting down with the **EasySqueegee®**, once cured the frame can be cleaned.



INTELLIGENT BLADE IDENTIFICATION

All blades inscribed with WFT and WFSR information.



SELF-LEVELING BLADES

Accurate and predictable Wet Film Thickness every time.



SELF-LOCATING BLADES

Designed to provide industry leading accuracy.



PROTECTED THREADS AND FASTENERS

Eliminates material contact with threads.



STEEL THUMB SCREWS REPLACE NUTS

Features Cured Coatings Release Technology for cleanability.

Wet Film Spread Rates (WFSR FT² / Gal.) are not absolute but provided to assist blade selection. Many factors can contribute to the actual WFSR including pressure exerted on the blade, porosity of the substrate being coated, material used and if and how the back-roll is completed. If you have any questions or would like to discuss the particulars of your project please contact us.



FLAT FLEXIBLE



FLAT STIFF



5-7 WFT MILS

WFSR: 230-320 FT² / GAL



8-12 WFT MILS

WFSR: 133-200 FT² / GAL



15-20 WFT MILS

WFSR: 80-106 FT² / GAL



25-30 WFT MILS

WFSR: 53-64 FT² / GAL



40-45 WFT MILS

WFSR: 36-40 FT² / GAL



50-60 WFT MILS

WFSR: 26-32 FT² / GAL

| SMW # | DESCRIPTION | UPC | PACK QTY |
|-------|--|--------------|----------|
| 78255 | 18" EasySqueegee® Frame with Threaded Handle Adapter | 046385782551 | 1 |
| 79853 | 18" EasySqueegee® with Flat Stiff Blade | 046385798538 | 1 |
| 79850 | 19" EasySqueegee® with Flat Flexible Blade | 046385798507 | 1 |
| 79856 | 18" EasySqueegee® with 5-7 WFT Mils Blade | 046385798569 | 1 |
| 79859 | 18" EasySqueegee® with 8-12 WFT Mils Blade | 046385798590 | 1 |
| 79862 | 18" EasySqueegee® with 15-20 WFT Mils Blade | 046385798620 | 1 |
| 79865 | 18" EasySqueegee® with 25-30 WFT Mils Blade | 046385798651 | 1 |
| 79868 | 18" EasySqueegee® with 40-45 WFT Mils Blade | 046385798682 | 1 |
| 79871 | 18" EasySqueegee® with 50-60 WFT Mils Blade | 046385798712 | 1 |
| 78256 | 26" EasySqueegee® Frame with Threaded Handle Adapter | 046385782568 | 1 |
| 79854 | 26" EasySqueegee® with Flat Stiff Blade | 046385798545 | 1 |
| 79851 | 27" EasySqueegee® with Flat Flexible Blade | 046385798514 | 1 |
| 79857 | 26" EasySqueegee® with 5-7 WFT Mils Blade | 046385798576 | 1 |
| 79860 | 26" EasySqueegee® with 8-12 WFT Mils Blade | 046385798606 | 1 |
| 79863 | 26" EasySqueegee® with 15-20 WFT Mils Blade | 046385798637 | 1 |
| 79866 | 26" EasySqueegee® with 25-30 WFT Mils Blade | 046385798668 | 1 |
| 79869 | 26" EasySqueegee® with 40-45 WFT Mils Blade | 046385798699 | 1 |
| 79872 | 26" EasySqueegee® with 50-60 WFT Mils Blade | 046385798729 | 1 |
| 79849 | Replacement Fasteners for EasySqueegee® (Bag of 7) | 046385798491 | 1 |



SPEEDSQUEEGEE®

HOW WE DIFFER FROM THE COMPETITION:

- Designed for applying resinous flooring materials such as epoxy and urethanes.
- Provides industry leading precision, predictability and versatility when compared to competitive products.
- Unique Color Coded Identification of WFT (in mils) and WFSR FT² / Gal.
- Four unique styles of blades (Flat Flex, Flat Stiff, Scalloped Notched and V-Notched) provide the installer with options in the field as to how to best accomplish their project.

**COMPLETE READY TO USE TOOL, ONE-PIECE FRAME & BLADE (NOT REPLACEABLE)
POLYMER FRAME WITH THREADED HANDLE ADAPTER
AVAILABLE IN 2 WIDTHS - 18" AND 24"**

 **FLAT FLEXIBLE**

 **FLAT STIFF**

 **5-7 WFT MILS**
WFSR: 230-320 FT² / GAL

 **8-12 WFT MILS**
WFSR: 133-200 FT² / GAL

 **15-20 WFT MILS**
WFSR: 80-106 FT² / GAL

 **25-30 WFT MILS**
WFSR: 53-64 FT² / GAL

 **40-45 WFT MILS**
WFSR: 36-40 FT² / GAL

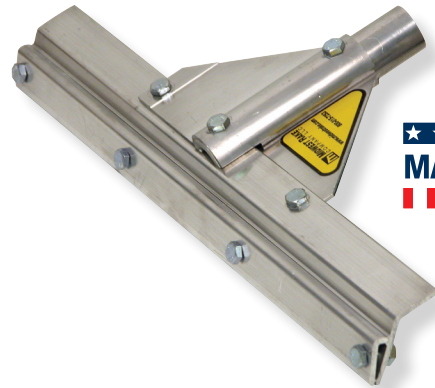
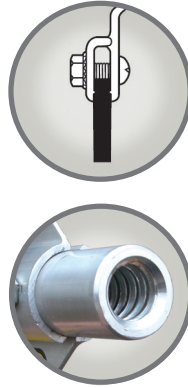
 **50-60 WFT MILS**
WFSR: 26-32 FT² / GAL

| SMW # | DESCRIPTION | UPC | PACK QTY |
|-------|---|--------------|----------|
| 47750 | 18" Speed Squeegee®, Flat Stiff Blade | 046385477501 | 6 |
| 47751 | 18" Speed Squeegee®, Flat Flex Blade | 046385477518 | 6 |
| 47756 | 18" Speed Squeegee®, 5-7 WFT Mils Blade | 046385477563 | 6 |
| 47759 | 18" Speed Squeegee®, 8-12 WFT Mils Blade | 046385477594 | 6 |
| 47762 | 18" Speed Squeegee®, 15-20 WFT Mils Blade | 046385477624 | 6 |
| 47765 | 18" Speed Squeegee®, 25-30 WFT Mils Blade | 046385477655 | 6 |
| 47768 | 18" Speed Squeegee®, 40-45 WFT Mils Blade | 046385477686 | 6 |
| 47771 | 18" Speed Squeegee®, 50-60 WFT Mils Blade | 046385477716 | 6 |
| 47850 | 24" Speed Squeegee®, Flat Stiff Blade | 046385478508 | 6 |
| 47851 | 24" Speed Squeegee®, Flat Flex Blade | 046385478515 | 6 |
| 47856 | 24" Speed Squeegee®, 5-7 WFT Mils Blade | 046385478560 | 6 |
| 47859 | 24" Speed Squeegee®, 8-12 WFT Mils Blade | 046385478591 | 6 |
| 47862 | 24" Speed Squeegee®, 15-20 WFT Mils Blade | 046385478621 | 6 |
| 47865 | 24" Speed Squeegee®, 25-30 WFT Mils Blade | 046385478652 | 6 |
| 47868 | 24" Speed Squeegee®, 40-45 WFT Mils Blade | 046385478683 | 6 |
| 47871 | 24" Speed Squeegee®, 50-60 WFT Mils Blade | 046385478713 | 6 |

Application Squeegees

Step 1 - Choose the frame

Midwest Rake® branded application squeegee frames are the standard in the Protective Coating industry. These “clamp-style” frames make it easy to change blades.



| Description | Frame Width | | | | |
|--|--------------|--------------|--------------|--------------|--------------|
| | Item No. 16" | Item No. 24" | Item No. 30" | Item No. 36" | Item No. 48" |
| Application Squeegee Frame with THA* | 78000 | 78010 | 78015 | 78020 | 78040 |
| Application Squeegee Frame with 66" PCAH** | 78100 | 78110 | 78115 | 78120 | 78140 |
| Application Squeegee Frame with 82" PCAH** | 78200 | 78210 | 78215 | 78220 | 78240 |

*Threaded Handle Adapter **Powder-Coated Aluminum Handle

What squeegee notch width / notch depth should I use to apply 10 mils of epoxy? At Midwest Rake®, the answer is always refer to our “Nominal Wet Film Thickness Chart” to determine the appropriate notch width / notch depth required for your job. Our squeegee blades have a unique design - shallower depth notches enable Midwest Rake® squeegees to stand out from the competition ensuring a consistent and tight range of wet film thickness delivery.

**The chart conversions to the right are not absolutes and are provided to help guide blade selection. Many factors can contribute to the actual wet film thickness produced; including: pressure exerted on the blade, porosity of the substrate (concrete) being coated, material being used and if and how the back-roll is completed. If you have any questions or would like to discuss the particulars of your project - please contact us at 844-SEYMOUR and we would be more than happy to provide guidance in the application squeegee selection process.*

NOMINAL WET FILM THICKNESS CHART

| Description | Notch Width | Notch Depth | Nominal Wet Film (WFT) Delivered in Mils* |
|-------------------|-------------|-------------|---|
| 1/8" V-Notch | 1/8" | 1/16" | 8 - 12 |
| 3/16" V-Notch | 3/16" | 3/32" | 15 - 20 |
| 1/4" V-Notch | 1/4" | 1/8" | 20 - 28 |
| 3/8" V-Notch | 3/8" | 1/4" | 30 - 45 |
| 1/2" V-Notch | 1/2" | 3/8" | 46-55 |
| 56-74 Mil V-Notch | | | 56-74 |
| 75+ Mil V-Notch | | | 75+ |

NEW

Step 2a - Choose the blade, 25' rolls

Our blades are available in TPV, EPDM, Red Rubber, and High-Heat Silicone. Most blades are “reversible” (notched on both sides). Each type is available in various notch sizes. See page 11 for variable width blades if you don't need rolls.



EXCLUSIVE
Rubber is also available by the roll.



Our standard TPV, EPDM, Red Rubber, and High-Heat Silicone are available in 25' rolls. Please see the chart below for product information.

| Description | Black TPV Notched on both sides | Standard EPDM Notched on both sides | 2" Red Rubber Notched on both sides | High-Heat Silicone Notched on one side |
|---------------------------------|------------------------------------|--|--|---|
| 25' Roll No-Notch (Flat) Rubber | 79405 | 79505 | 79605 | 79405-HH |
| 25' Roll 1/8" Notch Rubber | 79410 | 79510 | 79610 | 79410-HH |
| 25' Roll 3/16" Notch Rubber | 79415 | 79515 | 79615 | 79415-HH |
| 25' Roll 1/4" Notch Rubber | 79420 | 79520 | 79620 | 79420-HH |
| 25' Roll 3/8" Notch Rubber | 79425 | 79525 | 79625 | 79425-HH |
| 25' Roll 1/2" Notch Rubber | 79430 | 79530 | 79630 | 79430-HH |
| 25' Roll 56-74 Mil Notch Rubber | ~ | ~ | ~ | 79435-HH |
| 25' Roll 75+ Mil Notch Rubber | ~ | ~ | ~ | 79440-HH |

High Heat Silicone only available in 25' rolls.

NEW



Black TPV



EPDM
Chemical Resistant /
Non-marking



Red Rubber
Chemical Resistant /
Non-marking

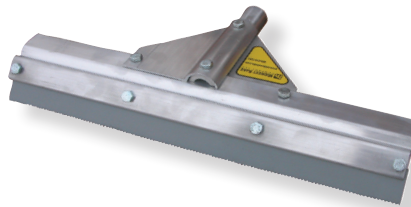
Step 2b - Choose the blade, variable widths

Our blades are available in TPV, EPDM, and Red Rubber. All blades are “reversible” (notched on both sides). Each type is available in a variety of head widths and notch sizes.

| Description | Blade Width | | | | |
|--|--------------|--------------|--------------|--------------|--------------|
| | Item No. 16" | Item No. 24" | Item No. 30" | Item No. 36" | Item No. 48" |
| Black TPV No-Notch (Flat) Reversible Squeegee Blade | 79005 | 79010 | 79013 | 79015 | 79020 |
| Black TPV 1/8" Notch Reversible Squeegee Blade | 79025 | 79030 | 79033 | 79035 | 79040 |
| Black TPV 3/16" Notch Reversible Squeegee Blade | 79045 | 79050 | 79053 | 79055 | 79060 |
| Black TPV 1/4" Notch Reversible Squeegee Blade | 79065 | 79070 | 79073 | 79075 | 79080 |
| Black TPV 3/8" Notch Reversible Squeegee Blade | 79085 | 79090 | 79093 | 79095 | 79100 |
| Black TPV 1/2" Notch Reversible Squeegee Blade | 79105 | 79110 | 79113 | 79115 | 79120 |
| EPDM No-Notch (Flat) Reversible Squeegee Blade | 79205 | 79210 | 79213 | 79215 | 79220 |
| EPDM 1/8" Notch Reversible Squeegee Blade | 79225 | 79230 | 79233 | 79235 | 79240 |
| EPDM 3/16" Notch Reversible Squeegee Blade | 79245 | 79250 | 79253 | 79255 | 79260 |
| EPDM 1/4" Notch Reversible Squeegee Blade | 79265 | 79270 | 79273 | 79275 | 79280 |
| EPDM 3/8" Notch Reversible Squeegee Blade | 79285 | 79290 | 79293 | 79295 | 79300 |
| EPDM 1/2" Notch Reversible Squeegee Blade | 79305 | 79310 | 79313 | 79315 | 79320 |
| Red Rubber No-Notch (Flat) Reversible Squeegee Blade | 79705 | 79710 | 79713 | 79715 | 79720 |
| Red Rubber 1/8" Notch Reversible Squeegee Blade | 79725 | 79730 | 79733 | 79735 | 79740 |
| Red Rubber 3/16" Notch Reversible Squeegee Blade | 79745 | 79750 | 79753 | 79755 | 79760 |
| Red Rubber 1/4" Notch Reversible Squeegee Blade | 79765 | 79770 | 79773 | 79775 | 79780 |
| Red Rubber 3/8" Notch Reversible Squeegee Blade | 79785 | 79790 | 79793 | 79795 | 79800 |
| Red Rubber 1/2" Notch Reversible Squeegee Blade | 79805 | 79810 | 79813 | 79815 | 79820 |

Application Squeegees

**Frame & blade combo -
you supply the handle**



Frame Width

| Description | For Handle Options See Page 31 | |
|---|--------------------------------|--------------|
| | Item No. 16" | Item No. 24" |
| Application Squeegee Frame with No-Notch (Flat) Reversible EPDM Blade with THA* | 78546 | 78554 |
| Application Squeegee Frame with No-Notch (Flat) Red Rubber Blade with THA* | 78548 | 78556 |
| Application Squeegee Frame with 1/8" Notched Reversible EPDM Blade with THA* | 78118 | 78128 |
| Application Squeegee Frame with 1/8" Notched Red Rubber Blade with THA* | - | 78129 |
| Application Squeegee Frame with 3/16" Notched Reversible EPDM Blade with THA* | 78116 | 78126 |
| Application Squeegee Frame with 3/16" Notched Red Rubber Blade with THA* | - | 78323 |
| Application Squeegee Frame with 1/4" Notched Reversible EPDM Blade with THA* | 78114 | 78124 |
| Application Squeegee Frame with 1/4" Notched Red Rubber Blade with THA* | - | 78125 |
| Application Squeegee Frame with 1/2" Notched EPDM Blade, THA* | - | 78122 |

*THA=Threaded Handle Adapter

PREASSEMBLED SQUEEGEES - SPEED SQUEEGEE® HD

SPEEDSQUEEGEE® HD



PREASSEMBLED WITH THREADED HANDLE ADAPTER



GRAY EPDM

A favorite among epoxy flooring, deck coating and decorative concrete contractors. Gray EPDM has excellent chemical resistance, is moderately stiff and is non-marking. Has a heavy-duty polymer threaded handle adapter.

RED RUBBER

The choice among epoxy flooring, deck coating, and decorative concrete contractors who prefer a softer blade. Red rubber provides excellent chemical resistance and is non-marking. Has a heavy-duty polymer threaded handle adapter.

Item No. Description

| | |
|-------|---|
| 47174 | Speed Squeegee® HD, 24", Threaded Handle Adapter, Flat, Gray EPDM Blade |
| 47175 | Speed Squeegee® HD, 24", Threaded Handle Adapter, 1/8" W x 1/16" D (8-12 mil), Gray EPDM Blade |
| 47176 | Speed Squeegee® HD, 24", Threaded Handle Adapter, 3/16 W x 3/32" D (15-20 mil), Gray EPDM Blade |
| 47177 | Speed Squeegee® HD, 24", Threaded Handle Adapter, 1/4" W x 1/8" D (20-28 mil), Gray EPDM Blade |

Item No. Description

| | |
|-------|--|
| 47150 | Speed Squeegee® HD, 24", Threaded Handle Adapter, Flat, Red Rubber Blade |
| 47151 | Speed Squeegee® HD, 24", Threaded Handle Adapter, 1/8" W x 1/16" D (8-12 mil), Red Rubber Blade |
| 47152 | Speed Squeegee® HD, 24", Threaded Handle Adapter, 3/16 W x 3/32" D (15-20 mil), Red Rubber Blade |
| 47153 | Speed Squeegee® HD, 24", Threaded Handle Adapter, 1/4" W x 1/8" D (20-28 mil), Red Rubber Blade |

NOMINAL WET FILM THICKNESS CHART

| Description | Notch Width | Notch Depth | WFT (in Mils*) |
|---------------|-------------|-------------|----------------|
| 1/8" V-Notch | 1/8" | 1/16" | 8 - 12 |
| 3/16" V-Notch | 3/16" | 3/32" | 15 - 20 |
| 1/4" V-Notch | 1/4" | 1/8" | 20 - 28 |
| 3/8" V-Notch | 3/8" | 1/4" | 30 - 45 |
| 1/2" V-Notch | 1/2" | 3/8" | 46-55 |

What squeegee notch width / notch depth should I use to apply 10 mils of epoxy? At Midwest Rake®, the answer is **always** refer to our "Nominal Wet Film Thickness Chart" to determine the appropriate notch width / notch depth required for your job. Our squeegee blades have a unique design - shallower depth notches enable Midwest Rake® squeegees to stand out from the competition ensuring a consistent and tight range of wet film thickness delivery.

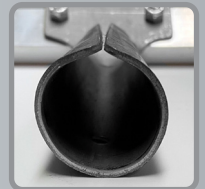
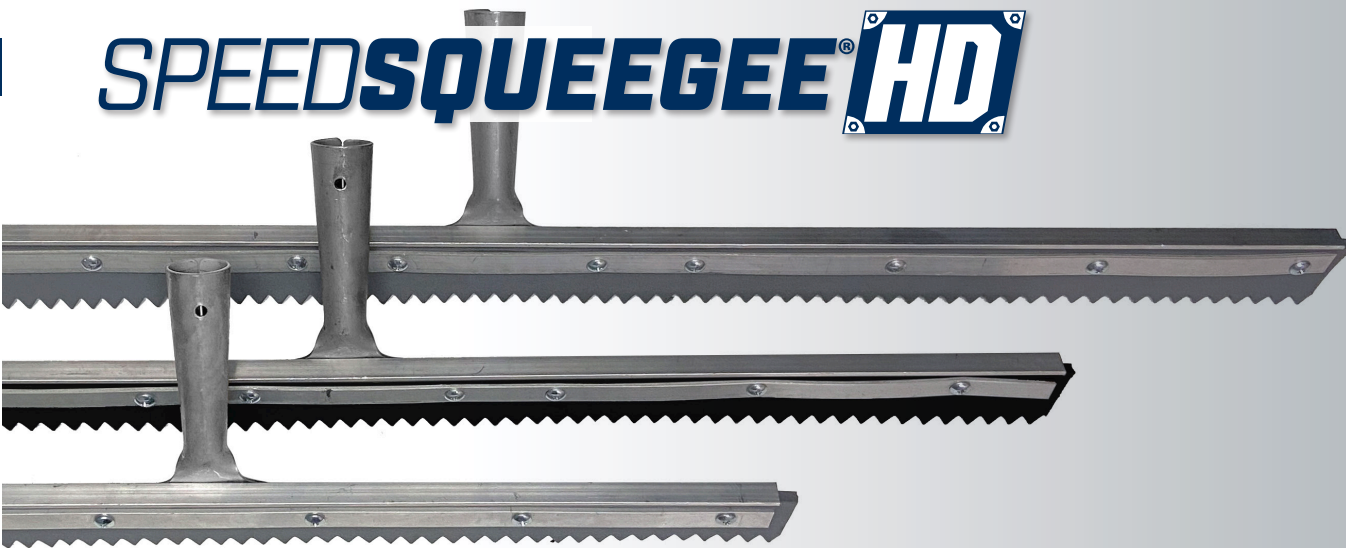
This chart conversions are not absolutes and are provided to help guide blade selection. Many factors can contribute to the actual wet film thickness produced; including: pressure exerted on the blade, porosity of the substrate (concrete) being coated, material being used and if and how the back-roll is completed. If you have any questions or would like to discuss the particulars of your project - please contact us at 844-SEYMOUR and we would be more than happy to provide guidance in the application squeegee selection process.



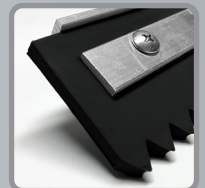
NEW

SPEED SQUEEGEE® HD - PREASSEMBLED SQUEEGEES

SPEEDSQUEEGEE® HD



TAPERED HANDLE ADAPTER



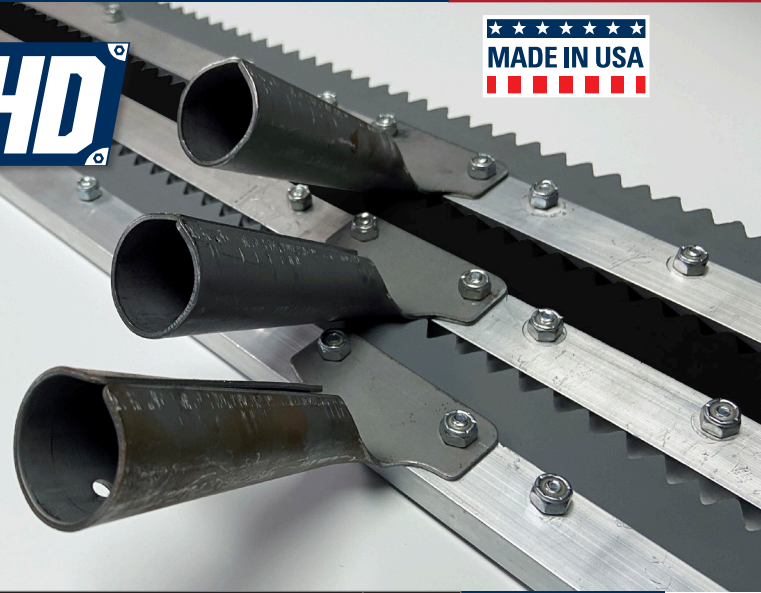
HEAVY-DUTY RUBBER BLADE

| SMW # | DESCRIPTION | PACK QTY |
|-----------|---|----------|
| 47511-B | Speed Squeegee® HD, 24", Tapered Adapter, Flat, Black Rubber | 6 |
| 47511-B8 | Speed Squeegee® HD, 24", Tapered Adapter, 1/8" W x 1/16" D (8-12 Mil), Black Rubber | 6 |
| 47511-B15 | Speed Squeegee® HD, 24", Tapered Adapter, 3/16" W x 3/32" D (15-20 Mil), Black Rubber | 6 |
| 47511-B20 | Speed Squeegee® HD, 24", Tapered Adapter, 1/4" W x 1/8" D (20-28 Mil), Black Rubber | 6 |
| 47511-B30 | Speed Squeegee® HD, 24", Tapered Adapter, 3/8" W x 1/4" D (30-45 Mil), Black Rubber | 6 |
| 47511-B46 | Speed Squeegee® HD, 24", Tapered Adapter, 1/2" W x 3/8" D (46-55 Mil), Black Rubber | 6 |
| 47511-B56 | Speed Squeegee® HD, 24", Tapered Adapter, (56-74 Mil), Black Rubber | 6 |
| 47511-B75 | Speed Squeegee® HD, 24", Tapered Adapter, (75+ Mil), Black Rubber | 6 |
| 47511-G | Speed Squeegee® HD, 24", Tapered Adapter, Flat, Gray Rubber | 6 |
| 47511-G8 | Speed Squeegee® HD, 24", Tapered Adapter, 1/8" W x 1/16" D (8-12 Mil), Gray Rubber | 6 |
| 47511-G15 | Speed Squeegee® HD, 24", Tapered Adapter, 3/16" W x 3/32" D (15-20 Mil), Gray Rubber | 6 |
| 47511-G20 | Speed Squeegee® HD, 24", Tapered Adapter, 1/4" W x 1/8" D (20-28 Mil), Gray Rubber | 6 |
| 47511-G30 | Speed Squeegee® HD, 24", Tapered Adapter, 3/8" W x 1/4" D (30-45 Mil), Gray Rubber | 6 |
| 47511-G46 | Speed Squeegee® HD, 24", Tapered Adapter, 1/2" W x 3/8" D (46-55 Mil), Gray Rubber | 6 |
| 47511-G56 | Speed Squeegee® HD, 24", Tapered Adapter, (56-74 Mil), Gray Rubber | 6 |
| 47511-G75 | Speed Squeegee® HD, 24", Tapered Adapter, (75+ Mil), Gray Rubber | 6 |
| 47512-B | Speed Squeegee® HD, 30", Tapered Adapter, Flat, Black Rubber | 6 |
| 47512-B8 | Speed Squeegee® HD, 30", Tapered Adapter, 1/8" W x 1/16" D (8-12 Mil), Black Rubber | 6 |
| 47512-B15 | Speed Squeegee® HD, 30", Tapered Adapter, 3/16" W x 3/32" D (15-20 Mil), Black Rubber | 6 |
| 47512-B20 | Speed Squeegee® HD, 30", Tapered Adapter, 1/4" W x 1/8" D (20-28 Mil), Black Rubber | 6 |
| 47512-B30 | Speed Squeegee® HD, 30", Tapered Adapter, 3/8" W x 1/4" D (30-45 Mil), Black Rubber | 6 |
| 47512-B46 | Speed Squeegee® HD, 30", Tapered Adapter, 1/2" W x 3/8" D (46-55 Mil), Black Rubber | 6 |
| 47512-B56 | Speed Squeegee® HD, 30", Tapered Adapter, (56-74 Mil), Black Rubber | 6 |
| 47512-B75 | Speed Squeegee® HD, 30", Tapered Adapter, (75+ Mil), Black Rubber | 6 |
| 47512-G | Speed Squeegee® HD, 30", Tapered Adapter, Flat, Gray Rubber | 6 |
| 47512-G8 | Speed Squeegee® HD, 30", Tapered Adapter, 1/8" W x 1/16" D (8-12 Mil), Gray Rubber | 6 |
| 47512-G15 | Speed Squeegee® HD, 30", Tapered Adapter, 3/16" W x 3/32" D (15-20 Mil), Gray Rubber | 6 |
| 47512-G20 | Speed Squeegee® HD, 30", Tapered Adapter, 1/4" W x 1/8" D (20-28 Mil), Gray Rubber | 6 |
| 47512-G30 | Speed Squeegee® HD, 30", Tapered Adapter, 3/8" W x 1/4" D (30-45 Mil), Gray Rubber | 6 |

FIELD TESTED TO BE LIGHTER THAN THE COMPETITION

IDEAL FOR HIGH VOLUME DECK COATING, WATERPROOFING, AND URETHANE INSTALLATIONS

SPEEDSQUEEGEE® HD



| SMW # | DESCRIPTION | PACK QTY |
|-----------|---|----------|
| 47512-G46 | Speed Squeegee® HD, 30", Tapered Adapter, 1/2" W x 3/8" D (46-55 Mil), Gray Rubber | 6 |
| 47512-G56 | Speed Squeegee® HD, 30", Tapered Adapter, (56-74 Mil), Gray Rubber | 6 |
| 47512-G75 | Speed Squeegee® HD, 30", Tapered Adapter, (75+ Mil), Gray Rubber | 6 |
| 47513-B | Speed Squeegee® HD, 36", Tapered Adapter, Flat, Black Rubber | 6 |
| 47513-B8 | Speed Squeegee® HD, 36", Tapered Adapter, 1/8" W x 1/16" D (8-12 Mil), Black Rubber | 6 |
| 47513-B15 | Speed Squeegee® HD, 36", Tapered Adapter, 3/16" W x 3/32" D (15-20 Mil), Black Rubber | 6 |
| 47513-B20 | Speed Squeegee® HD, 36", Tapered Adapter, 1/4" W x 1/8" D (20-28 Mil), Black Rubber | 6 |
| 47513-B30 | Speed Squeegee® HD, 36", Tapered Adapter, 3/8" W x 1/4" D (30-45 Mil), Black Rubber | 6 |
| 47513-B46 | Speed Squeegee® HD, 36", Tapered Adapter, 1/2" W x 3/8" D (46-55 Mil), Black Rubber | 6 |
| 47513-B56 | Speed Squeegee® HD, 36", Tapered Adapter, (56-74 Mil), Black Rubber | 6 |
| 47513-B75 | Speed Squeegee® HD, 36", Tapered Adapter, (75+ Mil), Black Rubber | 6 |
| 47513-G | Speed Squeegee® HD, 36", Tapered Adapter, Flat, Gray Rubber | 6 |
| 47513-G8 | Speed Squeegee® HD, 36", Tapered Adapter, 1/8" W x 1/16" D (8-12 Mil), Gray Rubber | 6 |
| 47513-G15 | Speed Squeegee® HD, 36", Tapered Adapter, 3/16" W x 3/32" D (15-20 Mil), Gray Rubber | 6 |
| 47513-G20 | Speed Squeegee® HD, 36", Tapered Adapter, 1/4" W x 1/8" D (20-28 Mil), Gray Rubber | 6 |
| 47513-G30 | Speed Squeegee® HD, 36", Tapered Adapter, 3/8" W x 1/4" D (30-45 Mil), Gray Rubber | 6 |
| 47513-G46 | Speed Squeegee® HD, 36", Tapered Adapter, 1/2" W x 3/8" D (46-55 Mil), Gray Rubber | 6 |
| 47513-G56 | Speed Squeegee® HD, 36", Tapered Adapter, (56-74 Mil), Gray Rubber | 6 |
| 47513-G75 | Speed Squeegee® HD, 36", Tapered Adapter, (75+ Mil), Gray Rubber | 6 |

IDEAL FOR HIGH VOLUME DECK COATING,
WATERPROOFING, AND URETHANE INSTALLATIONS
FIELD TESTED TO BE LIGHTER THAN THE COMPETITION

NOMINAL WET FILM THICKNESS CHART

| Description | Notch Width | Notch Depth | WFT (in Mils*) |
|--------------------|-------------|-------------|----------------|
| 1/8" V-Notch | 1/8" | 1/16" | 8 - 12 |
| 3/16" V-Notch | 3/16" | 3/32" | 15 - 20 |
| 1/4" V-Notch | 1/4" | 1/8" | 20 - 28 |
| 3/8" V-Notch | 3/8" | 1/4" | 30 - 45 |
| 1/2" V-Notch | 1/2" | 3/8" | 46-55 |
| 56-74 Mils V-Notch | ~ | ~ | 56-74 |
| 75+ Mils V-Notch | ~ | ~ | 75+ |

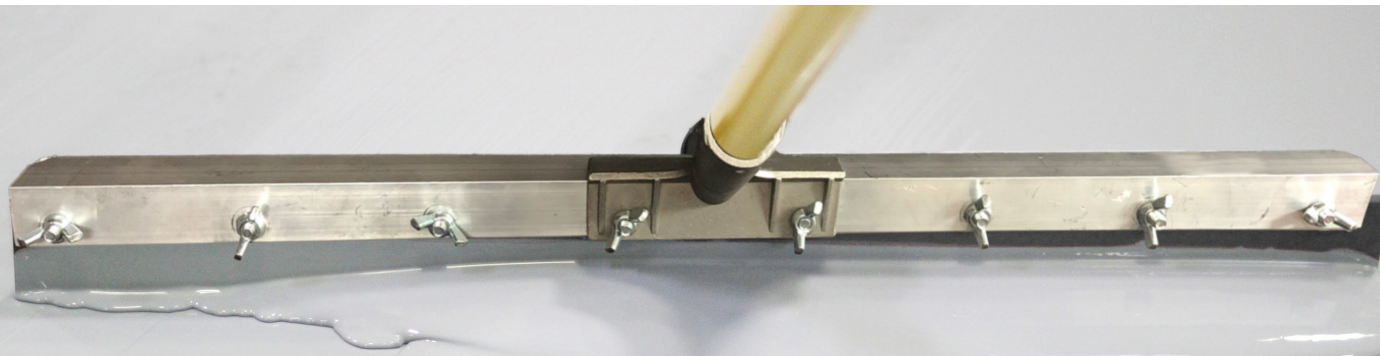
What squeegee notch width / notch depth should I use to apply 10 mils of epoxy? At Midwest Rake®, the answer is **always** refer to our "Nominal Wet Film Thickness Chart" to determine the appropriate notch width / notch depth required for your job. Our squeegee blades have a unique design - shallower depth notches enable Midwest Rake® squeegees to stand out from the competition ensuring a consistent and tight range of wet film thickness delivery.

This chart conversions are not absolutes and are provided to help guide blade selection. Many factors can contribute to the actual wet film thickness produced; including: pressure exerted on the blade, porosity of the substrate (concrete) being coated, material being used and if and how the back-roll is completed. If you have any questions or would like to discuss the particulars of your project - please contact us at 844-SEYMOUR and we would be more than happy to provide guidance in the application squeegee selection process.

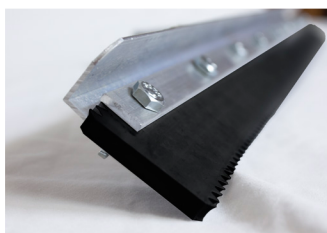
NEW

SPEED SQUEEGEE® HD - UNASSEMBLED SQUEEGEES

SPEEDSQUEEGEE® HD
HEAVY-DUTY REPLACEABLE BLADE APPLICATION SQUEEGEE



MIDWEST RAKE®



IDEAL FOR HIGH VOLUME DECK-COATING, WATERPROOFING AND URETHANE PRODUCT INSTALLATIONS

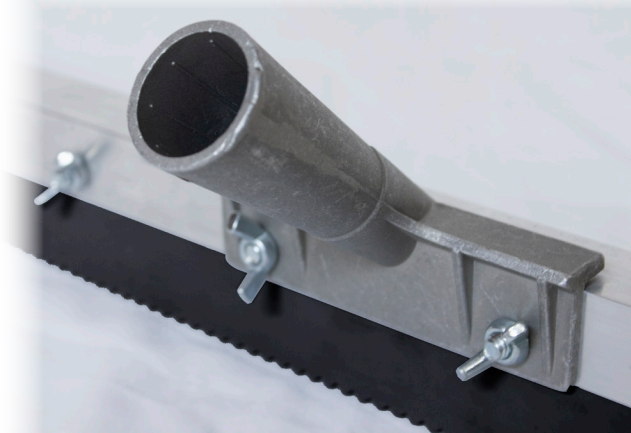
KEY PRODUCT FEATURES:

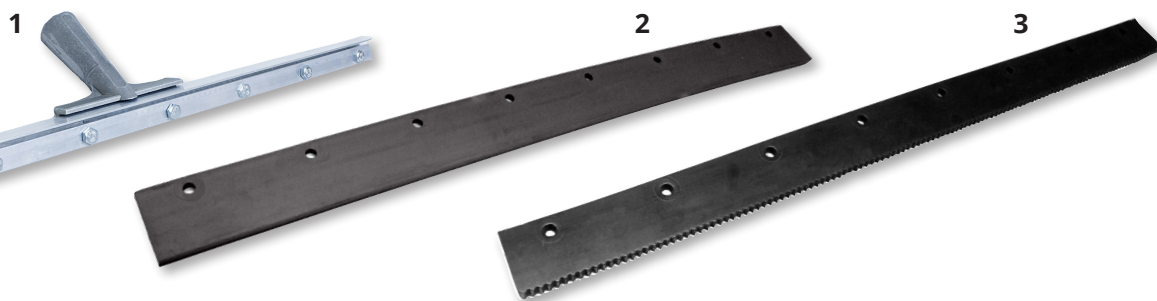
FRAMES:

- Heavy-duty aluminum frame **with tapered handle adapter**
- Frame kit includes: frame, clamp, hardware bag and tapered handle adapter
- Product is designed to be easily assembled without tools in just minutes

BLADES:

- Rubber blade is precut and prepunched allowing for easy assembly on the frame
- Blades are packaged and color-coded to identify both size of notch and approximate WFT delivered
- Blades offered in black neoprene
- **Frames & blades are sold separately**





| # | SMW # | DESCRIPTION | PACK QTY |
|---|-------|---|----------|
| 1 | 47540 | Speed Squeegee® HD Frame, 30" Aluminum Head, Tapered Handle Adapter | 6 |
| 2 | 47541 | Speed Squeegee® HD, 30", Flat, Black Neoprene Blade | 6 |
| 3 | 47542 | Speed Squeegee® HD, 30", 1/8" W x 1/16" D (8-12 mil), Black Neoprene Blade | 6 |
| | 47543 | Speed Squeegee® HD, 30", 3/16 W x 3/32" D (15-20 mil), Black Neoprene Blade | 6 |
| | 47544 | Speed Squeegee® HD, 30", 1/4" W x 1/8" D (20-28 mil), Black Neoprene Blade | 6 |
| | 47545 | Speed Squeegee® HD, 30", 3/8" W x 1/4" D (30-45 mil), Black Neoprene Blade | 6 |
| | 47546 | Speed Squeegee® HD, 30", 1/2" W x 3/8" D (46-55 mil), Black Neoprene Blade | 6 |
| | 47547 | Speed Squeegee® HD, 30", (56-74 Mil), Black Neoprene Blade | 6 |
| | 47548 | Speed Squeegee® HD, 30", (75+ Mil), Black Neoprene Blade | 6 |

BLADES AND FRAME ARE SOLD SEPARATELY



What squeegee notch width / notch depth should I use to apply 10 mils of epoxy? At Midwest Rake®, the answer is **always** refer to our "Nominal Wet Film Thickness Chart" to determine the appropriate notch width / notch depth required for your job. Our squeegee blades have a unique design - shallower depth notches enable Midwest Rake® squeegees to stand out from the competition ensuring a consistent and tight range of wet film thickness delivery.

NOMINAL WET FILM THICKNESS CHART

| Description | Notch Width | Notch Depth | WFT (in Mils*) |
|--------------------|-------------|-------------|----------------|
| 1/8" V-Notch | 1/8" | 1/16" | 8 - 12 |
| 3/16" V-Notch | 3/16" | 3/32" | 15 - 20 |
| 1/4" V-Notch | 1/4" | 1/8" | 20 - 28 |
| 3/8" V-Notch | 3/8" | 1/4" | 30 - 45 |
| 1/2" V-Notch | 1/2" | 3/8" | 46-55 |
| 56-74 Mils V-Notch | ~ | ~ | 56-74 |
| 75+ Mils V-Notch | ~ | ~ | 75+ |

The chart conversions above are not absolutes and are provided to help guide blade selection. Many factors can contribute to the actual wet film thickness produced; including: pressure exerted on the blade, porosity of the substrate (concrete) being coated, material being used and if and how the back-roll is completed. If you have any questions or would like to discuss the particulars of your project - please contact us at 844-SEYMOUR and we would be more than happy to provide guidance in the application squeegee selection process.

See Pages 12-14 for a large offering of PREASSEMBLED Speed Squeegee® HD tools with threaded handle and tapered adapters.

CAM® Gauge Rakes



U.S. Patent 5,606,763

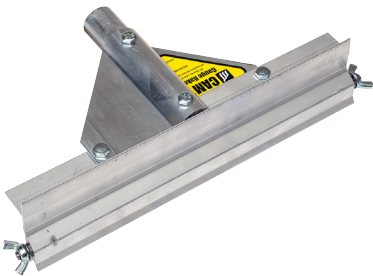


A patented "goof-proof" tool which applies materials at a precise, uniform depth. Apply decorative concrete "toppings," self leveling / high performance floor coating materials, and underlayments. CAM® depth settings range from 1/32" to 1-1/2". Includes an aluminum frame with either a threaded handle adapter or a powder-coated aluminum handle. Choose your frame size and handle option and then choose your CAM® set. Frames and sets are sold separately.

When one contact point wears down, you simply loosen the wing nut and rotate the CAM® to a fresh contact point. We use a "radial" edge design which maintains uniform coating thickness, even at varying handle angles and lengths.

CAM® GAUGE RAKE FRAMES AND CAM® SETS ARE SOLD SEPARATELY

- Head widths from 10" (hand-held) to 48". CAM® sets in depth settings from 1/32" to 1-1/2".
- The CAM® Gauge Rake is available with a milled threaded handle adapter or a 66" powder-coated aluminum handle. The 10" CAM® Rake is used for small areas and counter tops and has its own fixed handle with grip.



Midwest Rake® CAM® Gauge Rake

- Threaded Handle Adapter (Frame Only)
- CAM®s Sold Separately

| 12" | 24" | 36" | 48" |
|-------|-------|-------|-------|
| 57030 | 57000 | 57010 | 57020 |



Midwest Rake® CAM® Gauge Rake

- 66" Powder-Coated Aluminum Handle (Frame Only)
- CAM®s Sold Separately

| 12" | 24" | 36" | 48" |
|-------|-------|-------|-------|
| 57031 | 57001 | 57011 | 57021 |



57044 Midwest Rake® CAM® Gauge Rake Frame

- 10" Hand-Held Handle w/Grip
- CAM®s Sold Separately

Helpful Hint...

In many applications, gauge rakes can do the work in half the time it takes to use a squeegee... and with greater precision.

GAUGE RAKES - CAM®

CAM® Gauge Rake CAM® Sets

(Two CAM®s Per Set)



| | | | | | | | | |
|--------------------------|--------------------------|--------------------------|-------------------------|--------------------------|-------------------------|--------------------------|-------------------------|-------------------------|
| 1/32" 57078 Size A | 1/24" 57079 Size B | 1/16" 57081 Size 1 | 1/8" 57082 Size 2 | 3/16" 57083 Size 3 | 1/4" 57084 Size 4 | 5/16" 57085 Size 5 | 3/8" 57086 Size 6 | 1/2" 57088 Size 8 |
|--------------------------|--------------------------|--------------------------|-------------------------|--------------------------|-------------------------|--------------------------|-------------------------|-------------------------|

Not sure what depth you are going to need on your project? Use the Combo CAM® set.

This CAM® set has 5 separate size settings; 1 each of 1/16", 1/8", 3/16", 1/4" and 5/16". Sold separately from frame.

Larger CAM® Sets

| Item No. | Description |
|----------|---|
| 57090 | 5/8" CAM® Set (2 Each), 3 Settings, Size 10 |
| 57096 | 1" CAM® Set (2 Each), 3 Settings, Size 16 |
| 57104 | 1-1/2" CAM® Set (2 Each), 2 Settings, Size 24 |



57080

CAM® Sets Are Also Available in 3-Packs

| Item No. | Description |
|----------|---|
| 57180 | CAM® 3-Pack - 1 Set (2 Each), Size 1 (57081), Size 2 (57082) and Size 4 (57084) |
| 57181 | CAM® 3-Pack - 1 Set (2 Each), Size 2 (57082), Size 4 (57084) and Size 6 (57086) |

Small CAM® Sets (Two CAM®s Per Set)

Looking to apply coatings and slurries at greater than 30 mils? Our smaller CAM® Sets are ideal for Wet Film Thickness from 30 mils to 125 mils.

Customize Your Own CAM® Gauge Rake

or choose from a frame & blade combo (you supply the handle)

Now you can order the exact tool you use most. Supplied with a 24" wide frame and 1 CAM® set. Four different sizes of CAM® sets are available. Simply attach a handle and you have a complete tool. Replacement CAM® sets are available.

| CAM® Size | Description |
|-----------|------------------------|
| Size A | 1/32" = Approx 30 mils |
| Size B | 1/24" = Approx 42 mils |
| Size 1 | 1/16" = Approx 62 mils |
| Size 2 | 1/8" = Approx 125 mils |



| Item No. | Description |
|----------|---|
| 57201 | 24" CAM® Gauge Rake with Size 1 (1/16") CAM® Set (2 Each), THA* |
| 57202 | 24" CAM® Gauge Rake with Size 2 (1/8") CAM® Set (2 Each), THA* |
| 57203 | 24" CAM® Gauge Rake with Size 3 (3/16") CAM® Set (2 Each), THA* |
| 57204 | 24" CAM® Gauge Rake with Size 4 (1/4") CAM® Set (2 Each), THA* |
| 57206 | 24" CAM® Gauge Rake with Size 6 (3/8") CAM® Set (2 Each), THA* |

*Threaded Handle Adapter

Key Product Feature

We use a "radial" edge CAM® design which maintains uniform coating thickness, even at varying handle angles and lengths.

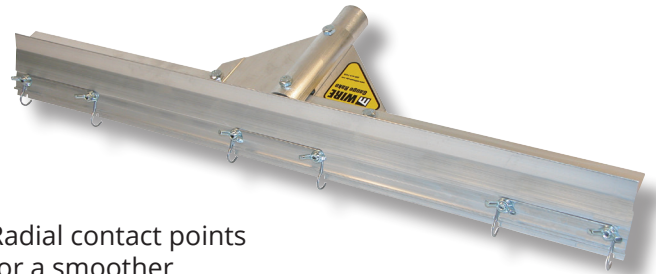
Wire Gauge Rakes



58624



Radial contact points for a smoother push / pull action



58609

Applies self-leveling floor coatings and lower viscosity materials. Far superior to pin-type gauge rakes on the market. The strong spring-steel wires are formed in a "radial" or loop fashion, eliminating chatter and vibration common with pin-type gauge rakes. Radial contact points will maintain even at varying handle angles and lengths. The adjustable aluminum gate or bar can be set to any desired thickness from 0" to 5/8". Replacement wires are available.

| Description | Frame Width | | |
|--|--------------|--------------|--------------|
| | Item No. 14" | Item No. 24" | Item No. 36" |
| Wire Gauge Rake with Threaded Handle Adapter | 58714 | 58609 | 58734 |
| Wire Gauge Rake with 66" Powder-Coated Aluminum Handle | - | 58624 | 58736 |
| Wire Gauge Rake with 82" Powder-Coated Aluminum Handle | - | 58824 | 58738 |

| Description | Item No. | | |
|---|----------|-------|-------|
| Replacement Wire Set (Set of 3 Wires) | 68611 | 68611 | - |
| Replacement Wire Set (Set of 4 Wires for 36" Width) | 68616 | - | 68616 |

Sled-Style Gauge Rakes

These self-adjusting gauge rakes have been used by contractors for many years. Although not as precise as our other gauge rakes, they are value priced and will allow you to achieve a reasonably level depth when installing cementitious materials. They also allow you to easily move over rough surfaces. Styles and colors may vary, but the "sled-style" self-adjusting feature of this gauge rake will be a standard characteristic in this category. Our handle adapter is threaded to provide a secure connection.

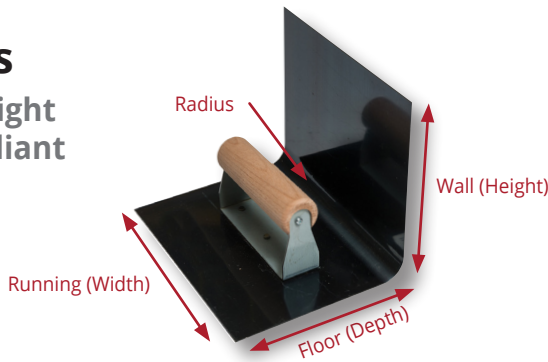


| Item No. | Description |
|----------|------------------------------|
| 58420 | 24" Sled-Style Gauge Rake |
| 58425 | 36" Sled-Style Gauge Rake |
| SA30034 | Replacement Sleds - Set of 2 |

TROWELS, SMOOTHERS & SPREADERS

Heavy-Duty Cove Trowels

6" and 8" Wall Height Regulation Compliant



Item No. Description

| | |
|-------|--|
| 47481 | 3/4" Radius, 6" Wall (H) x 5-3/4" Floor (D) x 7-1/2" Running (W) |
| 47482 | 3/4" Radius, 8" Wall (H) x 5-3/4" Floor (D) x 7-1/2" Running (W) |
| 47485 | 1" Radius, 6" Wall (H) x 5-3/4" Floor (D) x 7-1/2" Running (W) |
| 47486 | 1" Radius, 8" Wall (H) x 5-3/4" Floor (D) x 7-1/2" Running (W) |

Standard Cove Trowels

High Carbon Blue Steel



Item No. Description

| | |
|-------|--|
| 47414 | Heavy-Duty 1" Radius, 3.5" H x 5-3/4" D x 7-1/2" W |
| 47409 | Heavy-Duty 3/4" Radius, 3.5" H x 5-3/4" D x 7-1/2" W |
| 47411 | Economy Regular 1" Radius, 3" H x 4" D x 6" W |
| 47412 | Economy Regular 1" Radius, 3" H x 6" D x 6" W |

Tempered, ground and polished high-carbon spring steel trowels. Blades are fastened with hardened steel ground rivets. Wooden handles for better gripping power. Selected by manufacturers' "technical specialists" for decorative concrete and floor coating applications.



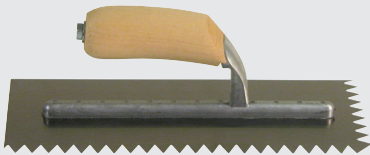
Rounded End Trowels



| | |
|-------|----------|
| 47465 | 4" x 16" |
| 47466 | 4" x 18" |
| 47475 | 3" x 12" |
| 47477 | 3" x 16" |

Notched Trowels

11" x 4-1/2" Overall



| | |
|-------|---------------|
| 47406 | 3/16" V-Notch |
| 47403 | 1/4" V-Notch |
| 47402 | 1/2" V-Notch |

"Spring Form" Trowels

Shorter Rib, More Flexibility



| | |
|-------|------------------------|
| 47470 | Square Edge, 5" x 16" |
| 47468 | Rounded Edge, 5" x 16" |

Epoxy Mortar Trowels



| | |
|-------|----------|
| 47460 | 3" x 12" |
| 47461 | 3" x 16" |

Finishing Trowels



| | |
|-------|----------|
| 47404 | 4" x 12" |
| 47405 | 4" x 16" |

Flexible Radius Trowel

This highly versatile, solvent-resistant rubber hand tool with flexible wings is ideal for the application of higher viscosity waterproofing, floor coating and sealing materials. Also effective along floor edges, for crack and patch filling on floors, and for the creation of a rounded radius along straight and radial edges when applying many different cementitious materials. Use with a threaded handle (see page 31).

The wing width is 6-1/2" and the length is 9-1/2". A 1-1/8" diameter tapered handle may be used with this tool (see page 31).

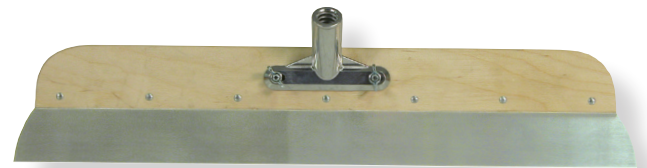


Item No. Description

| | |
|-------|------------------------|
| 46010 | Flexible Radius Trowel |
|-------|------------------------|



Smoother/Spreader



Item No. Description

| | |
|-------|---|
| 78930 | Wood / Steel Smoother with 22" Frame and 23-1/2" x 2" Heat-Treated Fan-Shaped Blade, THA* |
|-------|---|

*Threaded Handle Adapter

TROWELS, SMOOTHERS & SPREADERS

Flexible Blade Smoother

This flexible 24" x 5" rounded corner steel blade is bent and angled to maximize blade contact with a range of surface coating materials. This smoothing tool can also serve as a spreading tool and even a surface preparation tool. It is most often used when troweling and / or smoothing overlay / underlay material (toppings) of a cementitious composition. The blade is contained in a durable aluminum frame with our superior aluminum gusset bracing system. This tool is available with a threaded handle adapter or with a 66" powder-coated aluminum handle.

Rounded Corner

| Item No. | Description | Blade Size |
|----------|--|------------|
| 78906 | With Threaded Handle Adapter | 24" |
| 78907 | With 66" Powder-Coated Aluminum Handle | 24" |

Square Corner

| Item No. | Description | Blade Size |
|----------|--|------------|
| 78902 | With Threaded Handle Adapter | 24" |
| 78903 | With 66" Powder-Coated Aluminum Handle | 24" |



The Midwest Trowel

The Midwest Trowel is used to smooth the surface of applied cementitious overlays, particularly overlays of a more fluid consistency.



Performs identical to the Original Magic Trowel®

Item No. Description

| | |
|-------|---|
| 47415 | 12" Midwest Trowel with Threaded Handle Adapter |
| 47416 | 18" Midwest Trowel with Threaded Handle Adapter |
| 47417 | 22" Midwest Trowel with Threaded Handle Adapter |
| 47418 | 24" Midwest Trowel with Threaded Handle Adapter |
| 47419 | 26" Midwest Trowel with Threaded Handle Adapter |

NEW & IMPROVED

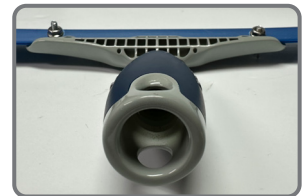
Ultimate Trowel®



- **BLADE SHEATH PROVIDED TO PROTECT THE BLADE & EXTEND LIFE OF TOOL**
- **COMFORT HAND GRIP WITH THREADED HANDLE ADAPTER**

MATERIAL SCIENCE PROVIDES A MORE DURABLE BLADE FOR LONGER TOOL LIFE

This style of trowel has been a contractor favorite to smooth the surface of applied cementitious overlays, particularly overlays of a more fluid consistency. A very effective finishing tool capable of creating a flawless surface. Blade has a slipcoat layer that provides an easy to clean surface.



| Item No. | Description |
|----------|---|
| 47420-12 | 12" Ultimate Trowel® with Threaded Handle Adapter |
| 47420-18 | 18" Ultimate Trowel® with Threaded Handle Adapter |
| 47420-22 | 22" Ultimate Trowel® with Threaded Handle Adapter |

| Item No. | Description |
|----------|---|
| 47420-24 | 24" Ultimate Trowel® with Threaded Handle Adapter |
| 47420-26 | 26" Ultimate Trowel® with Threaded Handle Adapter |

MIDWEST RAKE® ASSURANCE™

GUARANTEED QUALITY AND CONSISTENCY

GUARANTEED QUALITY & CONSISTENCY FOR THE EPOXY FLOORING CONTRACTOR

Assurance™ covers are designed to meet the needs of flooring contractors. They are extremely shed-resistant and provide a consistent quality you can depend on.

KEY FEATURES OF WOVEN:

- Premium quality high density fabric
- Solvent resistant phenolic core
- Designed for use with epoxies and urethanes of all types

KEY FEATURES OF LOOPED:

- Ideal for applying cement urethanes
- Often used with aggregated coatings
- Great for spreading and back-rolling



| Item No. | Description |
|----------|---|
| 48202 | 9" Assurance™ Woven Shed-Resistant Roller Cover - 1/4" Nap |
| 48203 | 9" Assurance™ Woven Shed-Resistant Roller Cover - 3/8" Nap |
| 48204 | 9" Assurance™ Woven Shed-Resistant Roller Cover - 1/2" Nap |
| 48208 | 18" Assurance™ Woven Shed-Resistant Roller Cover - 1/4" Nap |
| 48209 | 18" Assurance™ Woven Shed Resistant Roller Cover - 3/8" Nap |
| 48210 | 18" Assurance™ Woven Shed Resistant Roller Cover - 1/2" Nap |
| 48015 | 9" Assurance™ Looped Polymer Roller Cover |
| 48018 | 18" Assurance™ Looped Polymer Roller Cover |

All 18" covers fit 1/4" axles and come with 1/4" (white) end caps. All 24" & 36" covers fit 3/8" axles and come with black 3/8" end caps.

See Roller Frame options on page 25.

Extra-Long Pro-Grade Roller Covers

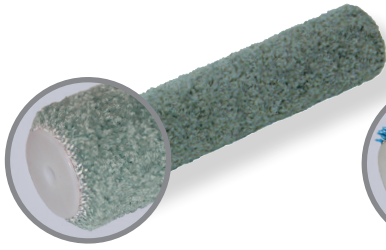
These roller covers are available in a shed-resistant woven fabric in widths of 24" and 36", with various nap lengths.

| Description | Roller Width | Nap Length 3/8" | Nap Length 1/2" |
|---|--------------|-----------------|-----------------|
| Pro-Grade Woven Shed-Resistant Roller Cover | 24" | 48040 | 48042 |
| Pro-Grade Woven Shed-Resistant Roller Cover | 36" | 48050 | 48052 |

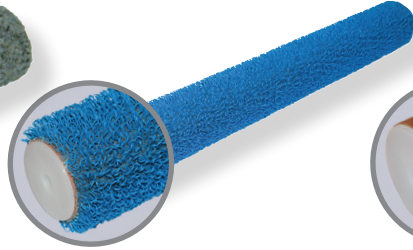


Complete large flooring projects faster! See for yourself why a simple change to a 24" roller from the traditional 18" roller used in flooring can save significant time and labor.

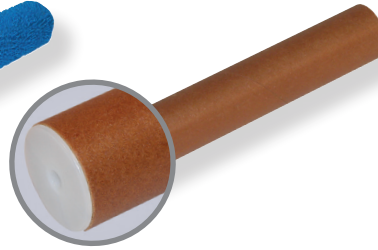
Specialty Roller Covers



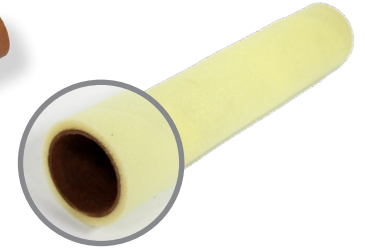
These Grey Carpet Nap Roller Covers are for the application of adhesives and coatings.



These Looped Polymer Roller Covers are most often used to "back-roll" applied coatings.



Our Phenolic Roller Covers are solvent-resistant and are used for the spreading and leveling of applied epoxies and mastics, anti-slip floor coverings and heavier coatings.



Pro Tiz™ Roller Covers are 3/16" high capacity, lint-free foam ideal for counter tops and have a phenolic core.

| Item No. 9" No End Caps | Item No. 18" with 1/4" End Caps | Description |
|-------------------------|---------------------------------|--|
| 48015 | 48018 | Looped Polymer Roller Cover |
| 48025 | 48019 | Phenolic Roller Cover |
| 48014 | 48017 | Grey Carpet Nap Roller Cover |
| 48416 | - | 9" Pro Tiz™ Roller Cover - 3/16" Foam (R265-9) |



Wooster® Roller Covers Not all fibers are created equal. With roller covers, like any textile item, the quality level of the chosen fiber ends up dictating the richness of the fabric being produced. Wooster® works closely with their fabric suppliers to choose and then modify fibers to ensure that they hold and release coatings better than competitive covers.

*See page 26 for more info on the Seymour Midwest® & Wooster® relationship.



| Item No. | Description |
|----------|--|
| 48414 | 9" Microplush™ Roller Cover - 5/16" Nap (R235-9) |
| 48415 | 18" Microplush™ Roller Cover - 5/16" Nap (R235-18) |



| Item No. | Description |
|----------|--|
| 48430 | 9" Epoxy Glide™ Roller Cover - 1/4" Nap (R232-9) |
| 48431 | 18" Epoxy Glide™ Roller Cover - 1/4" Nap, with 1/4" End Caps (R232-18) |



| Item No. | Description |
|----------|---|
| 48421 | 9" Pro/Doo-Z® Roller Cover - 3/16" Nap (RR641-9) |
| 48422 | 18" Pro/Doo-Z® Roller Cover - 3/16" Nap with 1/4" End Caps (RR641-18) |
| 48423 | 9" Pro/Doo-Z® Roller Cover - 3/8" Nap (RR642-9) |
| 48424 | 18" Pro/Doo-Z® Roller Cover - 3/8" Nap with 1/4" End Caps (RR642-18) |
| 48426 | 9" Pro/Doo-Z® Roller Cover - 1/2" Nap (RR643-9) |
| 48428 | 18" Pro/Doo-Z® Roller Cover - 1/2" Nap with 1/4" End Caps (RR643-18) |



| Item No. | Description |
|----------|---|
| 48419 | 9" Mohair Blend™ Roller Cover - 1/4" Nap (R207-9) |
| 48420 | 18" Mohair Blend™ Roller Cover - 1/4" Nap, with 1/4" End Caps (R207-18) |

ROLLER COVERS, ROLLERS & BRUSHES



| Item No. | Description |
|----------|--|
| 48441 | 9" Painter's Solution™ Roller Cover - 3/16" Nap (R575-9) |
| 48443 | 9" Painter's Solution™ Roller Cover - 3/8" Nap (R576-9) |
| 48444 | 9" Painter's Solution™ Roller Cover - 1/2" Nap (R577-9) |
| 48446 | 9" Painter's Solution™ Roller Cover - 3/4" Nap (R578-9) |
| 48447 | 18" Painter's Solution™ Roller Cover - 3/16" Nap, with 1/4" End Caps (R575-18) |
| 48449 | 18" Painter's Solution™ Roller Cover - 3/8" Nap, with 1/4" End Caps (R576-18) |
| 48450 | 18" Painter's Solution™ Roller Cover - 1/2" Nap, with 1/4" End Caps (R577-18) |
| 48451 | 18" Painter's Solution™ Roller Cover - 3/4" Nap, with 1/4" End Caps (R578-18) |

| Item No. | Description |
|----------|--|
| 48485 | 9" American Contractor® Knit Cover - 3/8" Nap (R562-9) |
| 48486 | 9" American Contractor® Knit Cover - 1/2" Nap (R563-9) |
| 48487 | 9" American Contractor® Knit Cover - 3/4" Nap (R564-9) |
| 48488 | 9" American Contractor® Knit Cover - 1-1/4" Nap (R565-9) |
| 48481 | 18" American Contractor® Knit Cover - 3/8" Nap, with 1/4" End Caps (R362-18) |
| 48482 | 18" American Contractor® Knit Cover - 1/2" Nap, with 1/4" End Caps (R363-18) |
| 48483 | 18" American Contractor® Knit Cover - 3/4" Nap, with 1/4" End Caps (R364-18) |
| 48520 | 9" Economy Knit Cover - 3/8" Nap (R259-9) |
| 48521 | 9" Economy Knit Cover - 1/2" Nap (R260-9) |
| 48522 | 9" Economy Knit Cover - 3/4" Nap (R261-9) |

4" Rollers and Frames

| Item No. | Description |
|----------|---|
| 48499 | 4" Painter's Solution™ Roller Cover - 3/8" Nap (R576-4) |
| 48404 | 4" Acme™ Heavy-Duty Frame (F0010-4) |
| 48490 | 4" Super Doo-Z® 1/2" (R204-4) |
| 48491 | 4" Super Doo-Z® 3/8" (R205-4) |
| 48475 | 4" Super/Fab® Knit 3/4" (R241-4) |



Painter's Choice Roller Kit

| Item No. | Description |
|----------|---------------------------------------|
| 48492 | 9" Painter's Choice Roller Kit (R975) |



Mini-Koter® and Frames

| Item No. | Description |
|----------|--|
| 48407 | Mini-Koter® Frame, 12" Length (R012) |
| 48408 | Mini-Koter® Frame, 19" Length (R011) |
| 48411 | Sherlock® Mini Pro Frame (Long Handle) (RR014) |
| 48413 | 4-1/2" Jumbo-Koter® Pro/Doo-Z® (RR302) |
| 48476 | 6" Mini-Koter® Woven 3/8" 2pk (R222-6) |
| 48477 | 6" Mini-Koter® Woven 3/8" 10pk (R125-6) |

| Item No. | Description |
|----------|---|
| 48478 | 6" Mini-Koter® Knit 1/2" 2pk (R231-6) |
| 48479 | 6" Mini-Koter® Knit 1/2" 10pk (R151-6) |
| 48473 | 4" Mini-Koter® Woven 3/8" 2pk (R222-4) |
| 48474 | 4" Mini-Koter® Woven 3/8" 10pk (R125-4) |
| 48452 | 4" Mini-Koter® Knit 1/2" 2pk (R231-4) |
| 48453 | 4" Mini-Koter® Knit 1/2" 10pk (R151-4) |



Chip Brushes

Chip brushes are ideal for flooring and protective and marine contractors who require a disposable and inexpensive brush to trim in around corners and edges.



| Item No. | Description |
|----------|--|
| 48130 | 1" White Bristle Chip Brush |
| 48131 | 2" White Bristle Chip Brush |
| 48132 | 2-1/2" White Bristle Chip Brush |
| 48133 | 3" White Bristle Chip Brush |
| 48134 | 4" White Bristle Chip Brush |
| 48142 | 2-1/2" White Bristle Double Thick Chip Brush |
| 48143 | 3" White Bristle Double Thick Chip Brush |
| 48144 | 4" White Bristle Double Thick Chip Brush |
| 48459 | 1" Solvent-Proof Chip Brush (1147-1) |

| Item No. | Description |
|----------|---|
| 48460 | 1-1/2" Solvent-Proof Chip Brush (1147-1.5) |
| 48461 | 2" Solvent-Proof Chip Brush (1147-2) |
| 48462 | 2-1/2" Solvent-Proof Chip Brush (1147-2.5) |
| 48463 | 3" Solvent-Proof Chip Brush (1147-3) |
| 48464 | 4" Solvent-Proof Chip Brush (1147-4) |
| 48561 | 2" Factory Sale Gray Bristle Brush (Z1101-2) NEW |
| 48563 | 3" Factory Sale Gray Bristle Brush (Z1101-3) NEW |
| 48564 | 4" Factory Sale Gray Bristle Brush (Z1101-4) NEW |



Sherlock® Extension Poles

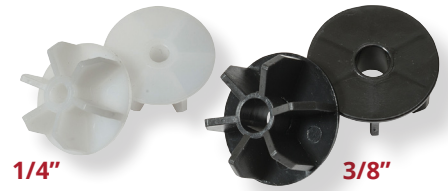
| Item No. | Description |
|----------|--|
| SP20207 | Sherlock® 2' - 4' Extension Pole (R054) |
| SP20208 | Sherlock® 4' - 8' Extension Pole (R055) |
| SP20209 | Sherlock® 6' - 12' Extension Pole (R056) |
| SP20217 | Sherlock GT® Convertible™ 2'-4' Pole (R090) |
| SP20218 | Sherlock GT® Convertible™ 4'-8' Pole (R091) |
| SP20219 | Sherlock GT® Convertible™ 6'-12' Pole (R092) |

Roller Gauge End Caps

The thick film roller gauge works for urethane cement, cement overlays, epoxies, anti-skids, and vapor barriers. Spread, gauge, and back roll; snaps on ends of roller in seconds; precise gauging, no guessing, no waste.



End Caps



| Item No. | Description |
|----------|--|
| 48182 | Roller Gauge End Caps, Low Mil 6-pk, Yellow, Approx 4 mils (R082) |
| 48183 | Roller Gauge End Caps, Med Mil 6-pk, Red, Approx 12 mils (R083) |
| 48187 | Roller Gauge End Caps, Med/Thick Mil 6-pk, Green, Approx 16 mils (R080) NEW |
| 48184 | Roller Gauge End Caps, High Mil 6-pk, Blue, Approx 22 mils (R084) |
| 48185 | Roller Gauge End Caps, Thick Film 6-pk, Gray, 1/2" Depth (R078) - PACK QTY 100 NEW |
| 48186 | Roller Gauge End Caps, Thick Film 6-pk, Black, 1/4" Depth (R079) - PACK QTY 100 NEW |

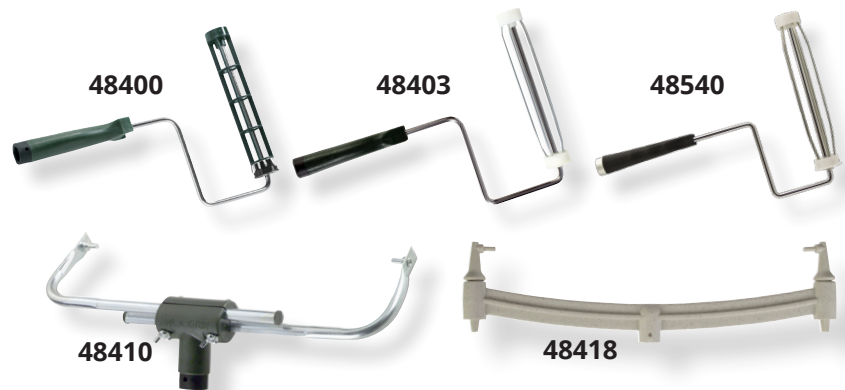
| Item No. | Description |
|----------|---------------------------|
| SA30005 | 1/4" End Caps (Set of 2) |
| SA30042 | 1/4" End Caps (Box of 24) |
| SA30045 | 3/8" End Caps (Set of 2) |
| SA30048 | 3/8" End Caps (Bag of 24) |



Roller Frames

The **48400** has a quick release spring that prevents roller slippage, smooth bearings for reliable applications, a polypropylene grip and a threaded handle adapter. It is one of the best universal roller frames on the market. The **48403** is a traditional "paint roller" style frame and the handle contains a threaded handle adapter. The **48410** adjusts to hold all roller covers from 9" to 18" wide. It has a rigid and durable steel frame with a threaded handle adapter, yet weighs less than one pound. The **48418** is a lightweight, yet the durable polypropylene 18" non-adjustable frame can accommodate any of the 18" roller covers we offer. This frame offers a threaded handle adapter and the fiber-glass-reinforced nylon legs are replaceable.

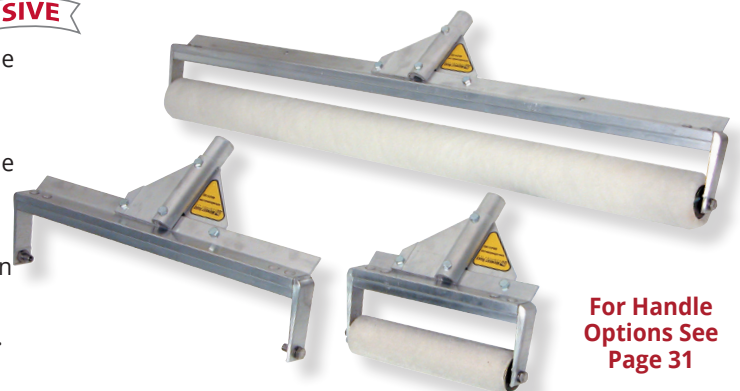
| Item No. | Description |
|----------|--|
| 48400 | 9" Wooster® Sherlock® Frame (R017) |
| 48403 | 9" Wooster® Magikage® Ninety Frame (R016) |
| 48540 | 9" Wooster® Acme™ Heavy-Duty Roller Frame (F0010) |
| 48410 | Wooster® Sherlock Wide Boy™ 18" Frame (BR036) |
| 48418 | Wooster® Big Ben® 18" Frame (BR045) |
| SA30006 | Replacement Nylon Legs for 48418 - Set of 2 (R085) |



Complete large flooring projects faster! See for yourself why a simple change to a 24" roller from the traditional 18" roller used in flooring can save significant time and labor.

Heavy-Duty Fixed Width Aluminum Frames **EXCLUSIVE**

These are the most durable frames on the market. They are available in widths of 9", 18", 24" and 36" and can be used with any of our roller covers and nylon and metal-tined rollers. The frames can be ordered with either a threaded handle adapter or with a fixed handle assembly. These heavy-duty solid aluminum frames are solvent-resistant and can be easily cleaned after each use. Special 3/8" post hole end caps are available for use with these exclusive frames when using 9" - 36" roller covers and spiked rollers. These polypropylene end caps are used to adapt the frames to any standard 1-1/2" roller. They are sold in quantities of 1 pair or a bag of 24 (see top of page).



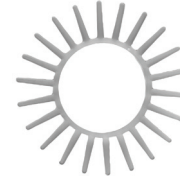
For Handle Options See Page 31

| Description | Item No. 9" | Item No. 18" | Item No. 24" | Item No. 36" |
|--|-------------|--------------|--------------|--------------|
| Heavy-Duty Aluminum Frame with Threaded Handle Adapter | 60108 | 60110 | 60113 | 60115 |
| Heavy-Duty Aluminum Frame with 66" Powder-Coated Aluminum Handle | 60109 | 60112 | 60114 | 60116 |

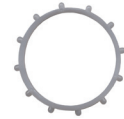
SPIKED ROLLERS - BLUNT & STUB

Blunt Spiked & Stub Rollers

We make a number of specialty tools featuring these hybrid spikes. Unlike our sharp-tipped spiked rollers, used to remove trapped bubbles from freshly applied floor coatings, these roller covers are actually used as application tools. They are often used to force and compress aggregate materials into a variety of overlays, or create a special surface finish. We can custom make a variety of tools using the "blunt" and "stub" spikes. Because of the hollow aluminum core, these rollers can be weighted.



Blunt Spikes
13/16" spikes
(22 spikes per ring)



Stubs
1/8" stubs
(12 stubs per ring)

| Description | Roller Width | | | |
|--|--------------|--------------|--------------|--------------|
| | Item No. 9" | Item No. 18" | Item No. 24" | Item No. 36" |
| Blunt Spiked Roller on Radial Roller Frame | 59108 | - | - | - |
| Blunt Spiked Roller on Heavy-Duty Aluminum Frame with THA* | 59709 | 59718 | 59724 | 59736 |
| Blunt Spiked Roller on Heavy-Duty Aluminum Frame with 66" PCAH** | 59809 | 59818 | 59824 | 59836 |
| Replacement Blunt Spiked Roller | - | SA10014 | SA10015 | SA10016 |
| Stub Roller on Radial Roller Frame | 59758 | - | - | - |
| Stub Roller on Heavy-Duty Aluminum Frame with THA* | 59759 | 59768 | 59774 | - |
| Replacement Stub Roller | SA10072 | SA10073 | SA10074 | - |

*THA=Threaded Handle Adapter **Powder-Coated Aluminum Handle

1-1/2" & 3" Small Spiked Rollers

These spiked rollers are vital in ensuring proper floor coating material adhesion. They are designed to be used on freshly applied floor coatings for the purpose of releasing trapped gas as well as to assist in the leveling process of several varieties of floor coatings. These rollers are easy to clean, allowing for repeated use. The applicator should also wear spiked shoes while using a spiked roller (see pages 4-6).

We manufacture our spikes and end caps out of solvent-resistant High-Density (HD) and Ultra-High Molecular Weight (UHMW) Polyethylene, respectively, for easier cleanup and extended wear. Spikes are available in 7/16", 9/16" and 13/16" lengths. We have 1-1/2" and 3" widths on special frames for very tight areas. The 1-1/2" and 3" rollers come on special handled frames.



| Item No. | Description |
|----------|--------------------------|
| 59001 | 1-1/2" with 7/16" Spikes |
| 59003 | 3" with 7/16" Spikes |
| 59403 | 3" with 9/16" Spikes |
| 59103 | 3" with 13/16" Spikes |

GREAT FOR WORKING MATERIAL NEAR CORNERS AND EDGES

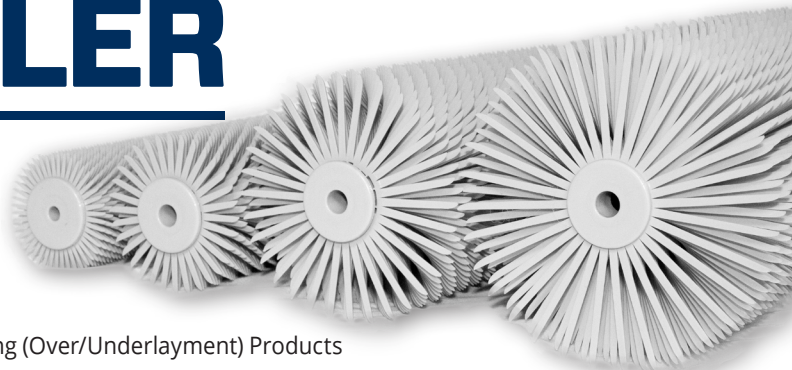


MIDWEST RAKE®

Looking for a traditional painting tool such as a brush, roller, frame or specialty tool that you don't see in our catalog? We now can give you access to thousands of **Wooster®** items as part of our expanded relationship.

- Single source all of your coatings tools, supplies and applicators
- New customized joint merchandising solutions and point of sale material available
- Customized programs tailored to meet your needs
- Local sales support

SPIKED ROLLER



- 4 Tine Lengths Available: 1/2", 13/16", 1-1/2" & 2"
- Abrasion-Resistant Nylon Tines Provide Superior Tool Life
- 3/8" End-Caps Allow Use with Midwest Rake® 9" Radial Frame, Medium-Duty Frame or Heavy-Duty Aluminum Frame
- Designed for Maximum Effectiveness in Releasing Entrapped Air and Promoting Self-Leveling of Coatings
- Engineered to Improve the Application Characteristics of Resurfacing (Over/Underlayment) Products

Choose Your Frame:

RADIAL FRAME



59010 9" Radial Frame

REPLACEMENT PARTS

59019 Hardware Bag for 9" Radial Frame (Washers / Spring Clip)

MEDIUM-DUTY FRAME



| | |
|-------|--------------------------------|
| 59030 | 18" Medium-Duty Aluminum Frame |
| 59050 | 24" Medium-Duty Aluminum Frame |
| 59070 | 36" Medium-Duty Aluminum Frame |

REPLACEMENT PARTS

| | |
|-------|--|
| 59089 | Hardware Bag for 18" & 24" & 36" Medium-Duty Aluminum Frames |
| 59091 | Threaded Handle Adapter & Screw for Medium-Duty Frame |

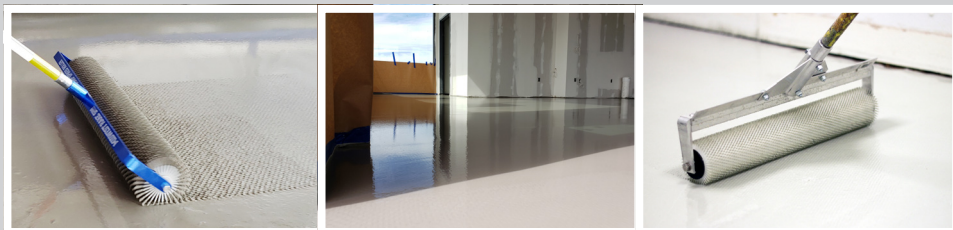
HEAVY-DUTY FRAME



| | |
|-------|--|
| 60108 | 9" Heavy-Duty Aluminum Frame with Threaded Handle Adapter |
| 60109 | 9" Heavy-Duty Aluminum Frame with 66" Powder Coated Aluminum Handle |
| 60110 | 18" Heavy-Duty Aluminum Frame with Threaded Handle Adapter |
| 60112 | 18" Heavy-Duty Aluminum Frame with 66" Powder Coated Aluminum Handle |
| 60113 | 24" Heavy-Duty Aluminum Frame with Threaded Handle Adapter |
| 60114 | 24" Heavy-Duty Aluminum Frame with 66" Powder Coated Aluminum Handle |
| 60115 | 36" Heavy-Duty Aluminum Frame with Threaded Handle Adapter |
| 60116 | 36" Heavy-Duty Aluminum Frame with 66" Powder Coated Aluminum Handle |

REPLACEMENT PARTS

| | |
|---------|---|
| SA30035 | Hardware Bag, Axles for Heavy-Duty Frame |
| SA30010 | THA Kit (Threaded Handle Adapter, Gusset Braces & Hardware) |



- All frames have a threaded handle adapter.
- Both nylon tined & metal-tined rollers come with 3/8" end-caps allowing them to fit any of the frames listed above.
- **2" NYLON SPIKED ROLLERS CAN ONLY BE USED WITH THE 9" RADIAL FRAME OR THE MEDIUM-DUTY FRAMES.**

Choose Your Roller:

Item No. Description

| 1/2" SUPER SHARP (44 TINES) | Item No. | Description |
|-----------------------------|----------|---|
| | 59011 | 9" Spiked Roller, 1/2" Supersharptines |
| | 59031 | 18" Spiked Roller, 1/2" Supersharptines |
| | 59051 | 24" Spiked Roller, 1/2" Supersharptines |
| | 59071 | 36" Spiked Roller, 1/2" Supersharptines |

Ideal for Resinous Coatings (Epoxy & Urethane)

Item No. Description

| 1-1/2" SUPER SHARP (32 TINES) | Item No. | Description |
|-------------------------------|----------|---|
| | 59013 | 9" Spiked Roller, 1-1/2" Supersharptines |
| | 59033 | 18" Spiked Roller, 1-1/2" Supersharptines |
| | 59053 | 24" Spiked Roller, 1-1/2" Supersharptines |
| | 59073 | 36" Spiked Roller, 1-1/2" Supersharptines |

Ideal for Cementitious and Gypsum Resurfacing Materials

| 13/16" SUPER SHARP (32 TINES) | Item No. | Description |
|-------------------------------|----------|---|
| | 59012 | 9" Spiked Roller, 13/16" Supersharptines |
| | 59032 | 18" Spiked Roller, 13/16" Supersharptines |
| | 59052 | 24" Spiked Roller, 13/16" Supersharptines |
| | 59072 | 36" Spiked Roller, 13/16" Supersharptines |

Ideal for Cementitious and Gypsum Resurfacing Materials

| 2" SUPER SHARP (32 TINES) | Item No. | Description |
|---------------------------|----------|---------------------------------------|
| | 59014 | 9" Spiked Roller, 2" Supersharptines |
| | 59034 | 18" Spiked Roller, 2" Supersharptines |
| | 59054 | 24" Spiked Roller, 2" Supersharptines |
| | 59074 | 36" Spiked Roller, 2" Supersharptines |

Ideal for Cementitious and Gypsum Resurfacing Materials
2" Nylon Spiked Rollers Can Only Be Used with the 9" Radial Frame or the Medium-Duty Frames

SPIKED ROLLER

- 2 Tine Lengths Available: 1/2" & 1-1/4" Nominal • 1-1/2" Standard Size Core • Dense Configuration of Tin-Plated Steel Tines
- Designed for Maximum Effectiveness in Releasing Entrapped Air & Promoting Self-Leveling of Coatings
- Engineered to Improve the Application Characteristics of Resurfacing (Over/Underlayment) Products
- 3/8" End-Caps Allow Use with Midwest Rake® 9" Radial Frame, Medium-Duty Frame or Heavy-Duty Aluminum Frame

RADIAL FRAME



| | |
|-------|-----------------|
| 59010 | 9" Radial Frame |
|-------|-----------------|

REPLACEMENT PARTS

| | |
|-------|--|
| 59019 | Hardware Bag for 9" Radial Frame (Washers / Spring Clip) |
|-------|--|

Choose Your Frame:

MEDIUM-DUTY FRAME



| | |
|-------|--------------------------------|
| 59030 | 18" Medium-Duty Aluminum Frame |
| 59050 | 24" Medium-Duty Aluminum Frame |
| 59070 | 36" Medium-Duty Aluminum Frame |

REPLACEMENT PARTS

| | |
|-------|--|
| 59089 | Hardware Bag for 18" & 24" & 36" Medium-Duty Aluminum Frames |
| 59091 | Threaded Handle Adapter & Screw for Medium-Duty Frame |

HEAVY-DUTY FRAME





| | |
|-------|--|
| 60108 | 9" Heavy-Duty Aluminum Frame with Threaded Handle Adapter |
| 60109 | 9" Heavy-Duty Aluminum Frame with 66" Powder Coated Aluminum Handle |
| 60110 | 18" Heavy-Duty Aluminum Frame with Threaded Handle Adapter |
| 60112 | 18" Heavy-Duty Aluminum Frame with 66" Powder Coated Aluminum Handle |
| 60113 | 24" Heavy-Duty Aluminum Frame with Threaded Handle Adapter |
| 60114 | 24" Heavy-Duty Aluminum Frame with 66" Powder Coated Aluminum Handle |
| 60115 | 36" Heavy-Duty Aluminum Frame with Threaded Handle Adapter |
| 60116 | 36" Heavy-Duty Aluminum Frame with 66" Powder Coated Aluminum Handle |

REPLACEMENT PARTS

| | |
|---------|---|
| SA30035 | Hardware Bag, Axles for Heavy-Duty Frame |
| SA30010 | THA Kit (Threaded Handle Adapter, Gusset Braces & Hardware) |

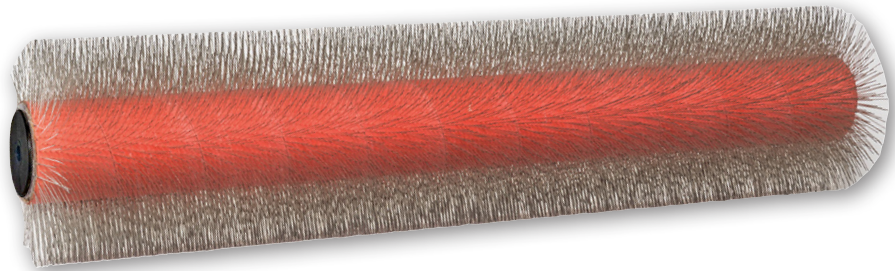
Choose Your Roller:

| Item No. | Description |
|--|--|
|  1/2" SUPER SHARP | 48090 9" Metal-Tined Roller, 1/2" Tines |
| | 48091 18" Metal-Tined Roller, 1/2" Tines |
| | 48092 24" Metal-Tined Roller, 1/2" Tines |

| Item No. | Description |
|---|--|
|  1-1/4" SUPER SHARP | 48093 9" Metal-Tined Roller, 1-1/4" Tines |
| | 48094 18" Metal-Tined Roller, 1-1/4" Tines |
| | 48095 24" Metal-Tined Roller, 1-1/4" Tines |

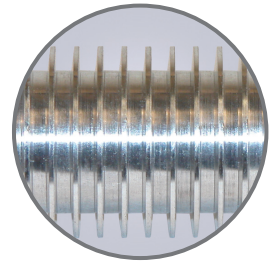
Metal-Tined Spiked Roller Covers

Midwest Rake® spiked rollers are premium quality and engineered to provide maximum performance to minimize out-gassing and promote leveling characteristics of resinous coatings as well as resurfacing materials of all types. A more dense steel tine configuration, modeled after the traditional "porcupine" roller. These rollers have a 1-1/2" aluminum core. Metal-tined spiked rollers work remarkably well with cementitious and gypsum based overlays to promote self-leveling and reduce out-gassing. All spiked rollers come with 3/8" black end-caps.



Ribbed Rollers

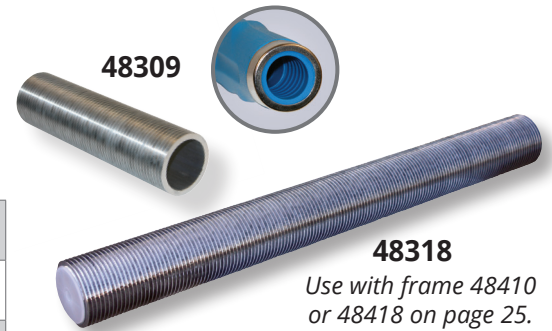
Ribbed rollers are used to evenly distribute resin and other bonding materials when installing fiberglass and other high performance fabric and mesh laminate reinforcement systems. The use of these rollers enhances the fiberglass / fabric saturation and containment, while removing air bubbles and pockets. These rollers are useful in the installation of tank linings, concrete secondary containment systems and concrete mortar laminate reinforcement flooring applications. Aluminum rollers are the industry standard. All styles have fins designed with just enough angle to increase strength without sacrificing air relief. These rollers are designed to reduce sheared fiber by insuring a radius is machined on each fin. Resin can be burned off with a torch.



Replaceable Sleeve Ribbed Rollers

These aluminum rollers fit directly on standard paint roller frames. They have a 2" diameter with a 1-1/2" diameter center to slip over paint roller frames just like a paint roller cover. The rollers are made from strong 6063 aluminum and are machined to exacting standards of the 2" aluminum rollers shown below. They are sold as complete tools, with replacement sleeves available.

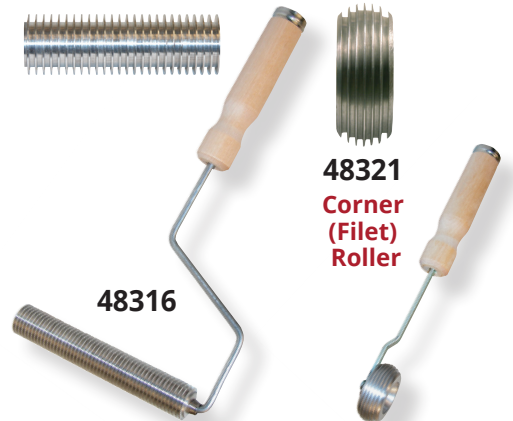
| Item No. | Description |
|----------|--|
| 48304 | 4" x 2" Aluminum Ribbed Roller Replacement Sleeve, 1-1/2" Inside Diameter - Use with 48404 Roller Frame |
| 48309 | 9" x 2" Aluminum Ribbed Roller Replacement Sleeve, 1-1/2" Inside Diameter - Use with 48540, 48403, & 48400 Roller Frames |
| 48318 | 18" x 2" Aluminum Ribbed Roller Sleeve, 1-1/2" Inside Diameter - Use with 48410 & 48418 Roller Frames |



Ribbed Rollers with Wooden Handles

These aluminum rollers have a traditional deep fin, straight groove design. Machined radius fin corners reduce glass fiber shearing. They have reduced clearance for less resin contamination. These rollers come on strong galvanized steel frames with undersized handle bore for a tight fit and long life. The wood handles are steel ferruled and accept standard threaded extension handles (see page 31).

| Item No. | Description |
|----------|---|
| 48313 | 3" Aluminum Ribbed Roller, 1" Diameter, Wood Handle - Complete Tool |
| 48316 | 6" Aluminum Ribbed Roller, 1" Diameter, Wood Handle - Complete Tool |
| 48326 | 6" Aluminum Ribbed Roller, 2" Diameter, Wood Handle - Complete Tool |
| 48329 | 9" Aluminum Ribbed Roller, 2" Diameter, Wood Handle - Complete Tool |



Specialty Ribbed Rollers

These specialty rollers are designed for concave surfaces and filets where flat rollers are not effective. All of these rollers come with strong steel frames and ferrule reinforced wood handles with handle adapters that accept standard extension handles (see page 31 for handles). All of these rollers are machined with the deepest fins possible for efficient air relief and excellent lay up properties.

| Item No. | Description |
|----------|---|
| 48321 | 3/4" Aluminum Corner (Filet) Ribbed Roller, 2-1/2" Diameter - Complete Tool |
| 48323 | 3" Aluminum (Barrel) Radius Ribbed Roller, 2" Diameter - Complete Tool |
| 48310 | 3" Aluminum Inverted Radius Ribbed Roller, 1" Diameter - Complete Tool |



Fiberglass Scissors

These 10" knife-edge fiberglass scissors are very rigid and American Made. The knife edge design insures clean, crisp shearing action for all fiberglass materials. The increased blade angle of 45° over the 15° angle of standard scissors reduces effort and leaves a cleaner, more even cut.



48300



BROOMS, BRUSHES & SCRAPERS



Duo Broom Best for the removal of “fine” materials because of its combination of strong 3" polypropylene bristles with an added layer of outside bristles. Features our super-strong, unique and durable overlapping gusset bracing system.

Item No. Description

| | |
|-------|---|
| 82904 | Seymour® S500 Industrial™ 24" Duo Broom, 60" Ergonomic Blue Powder-Coated Aluminum Handle |
| 82906 | Seymour® S500 Industrial™ 36" Duo Broom, 60" Ergonomic Blue Powder-Coated Aluminum Handle |

Street / Landscape Broom Stiff, 5" orange poly-corn bristles and comes with our super-strong, unique and durable overlapping gusset bracing system.

Item No. Description

| | |
|-------|---|
| 82118 | Structron® 18" Street / Landscape Broom, 60" Ergonomic Yellow Powder-Coated Aluminum Handle |
|-------|---|

General Purpose Broom Features our super-strong, unique and durable overlapping gusset bracing system.

Item No. Description

| | |
|-------|--|
| 82124 | Structron® 24" General Purpose Broom, 60" Ergonomic Yellow Powder-Coated Aluminum Handle |
| 82136 | Structron® 36" General Purpose Broom, 60" Ergonomic Yellow Powder-Coated Aluminum Handle |

Protective Coating Brush Polypropylene bristles plus a squeegee blade make this an ideal protective coating application tool.

Item No. Description

| | |
|-------|--|
| 82900 | 18" Coating Brush with Squeegee, 60" x 15/16" Metal Threaded Tip Wood Handle |
| 47240 | 18" Protective Coating Brush with Squeegee Blade (Head Only) |

Microfiber Pad System

Microfiber penetrates surface pores to remove tiny dust particles. Velcro backing makes changing mop heads quick & easy. Note: Microfiber Pad System 48580 handle is “unique” in design and can only be used with 48581-18 & 48581-24 frames.

Item No. Description

| | | |
|----------|--|------------|
| 48503-18 | 18" Microfiber Pad - 5" wide | NEW |
| 48503-24 | 24" Microfiber Pad - 5" wide | NEW |
| 48581-18 | Frame for 18" Microfiber Pad | NEW |
| 48581-24 | Frame for 24" Microfiber Pad | NEW |
| 48580 | 37.25" - 60" Telescopic Pole For Microfiber Pad System | NEW |



T-Bar System

The heavy-duty T-Bar applicator frame is professional-grade and available in 12" and 18" lengths. It has a 180° pivoting head for increased mobility and 1" smooth steel tube for easy removal and replacement of applicator pads. It has a threaded adapter handle that fits most standard threaded poles. The 1" foam refill pads are made from a specially finished fabric.

Item No. Description

| | | |
|----------|-----------------------|------------|
| 48235-12 | 12" Lightweight T-Bar | NEW |
| 48235-18 | 18" Lightweight T-Bar | NEW |
| 48236-12 | 12" Foam T-Bar Refill | NEW |
| 48236-18 | 18" Foam T-Bar Refill | NEW |

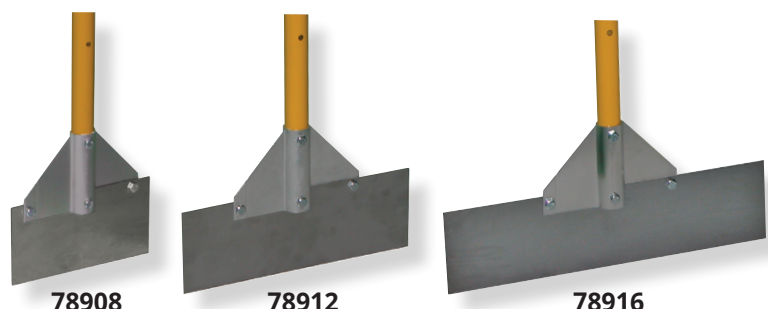


Scrapers

The 16 gauge stainless steel blade, available in widths of 8", 12" and 16", is attached to our super-strong, unique and durable overlapping gusset bracing system along with a 66" powder-coated aluminum handle. This is one of the most powerful scrapers on the market. The blade can be sharpened for project needs.

Blade Width

| Description | Item No. 8" | Item No. 12" | Item No. 16" |
|-------------------------|-------------|--------------|--------------|
| Stainless Steel Scraper | 78908 | 78912 | 78916 |
| Replacement Blade | SP50027 | SP50028 | SP50029 |



POLES & EXTENSION HANDLES

Extension Handle Options

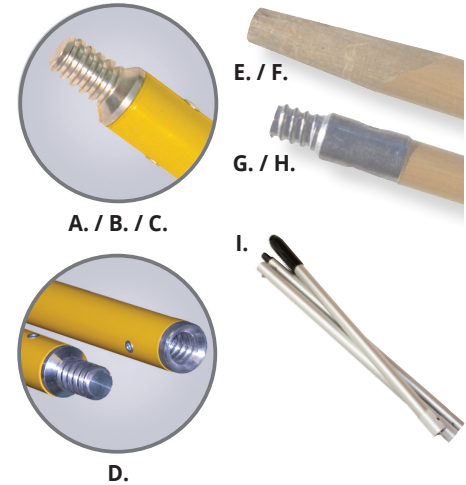
Powder-coated aluminum handles with milled aluminum threaded tips - for use with threaded handle adapters. We designed this milled threaded tip handle to provide the "tightest" fit with our tools that are available with our exclusive threaded handle adapter. These handles have a durable, milled threaded aluminum tip for added strength - no more broken tips - and come in 60", 66", and 82" lengths. We also have a 60" extension handle available to use with these handles which has a threaded milled aluminum tip on one end and a threaded milled aluminum receptacle on the other end.



Hardwood Handles - We offer a variety of high quality hardwood handles, with either a tapered tip or a metal threaded tip.

| Item No. | Description |
|------------|---|
| A. SA20173 | 60" PCAH* Handle with Aluminum Threaded Tip |
| B. SA20174 | 66" PCAH* Handle with Aluminum Threaded Tip |
| C. SA20175 | 82" PCAH* Handle with Aluminum Threaded Tip |
| D. SA20228 | 60" Yellow Extension Aluminum Handle, Threaded Tip and Socket |
| E. SP20220 | 1-1/8" x 60" Hardwood Handle, Tapered Tip |
| F. SP20221 | 1-1/8" x 72" Hardwood Handle, Tapered Tip |
| G. SP20215 | 15/16" x 60" Hardwood Handle, Metal Threaded Tip |
| H. SP20216 | 15/16" x 72" Hardwood Handle, Metal Threaded Tip |
| I. 60320 | 60", 3 Piece Aluminum Handle, Threaded Handle Adapter |

*Powder-Coated Aluminum Handle



Fiberglass Extension Handles - Prized by painting contractors, cleaning professionals and other users who look for extended reach with maximum adjustability, our extension handles have been top-sellers for decades. Our patented STĀ-LOK® mechanism is the most convenient and reliable to use. Just twist to lock in any position.



Structron® Superhandle® II Ultra Extension Handle, Tip Milled from Solid Aluminum Bar

- Ultra milled tip
- Fiberglass telescoping handle with cushion grip
- Ultra threaded tip replacement Kit (60279)

| Item No. | Description |
|----------|--|
| 60270 | 1' - 2' Handle with STĀ-LOK® & End Cap |
| 60271 | 2' - 4' Handle with Dual Lock |
| 60276 | 3' - 6' Handle with Dual Lock |
| 60272 | 4' - 8' Handle with Dual Lock |
| 60273 | 6' - 12' Handle with Dual Lock |
| 60274 | 8' - 16' Handle with Dual Lock |
| 60275 | 8' - 24' Handle with Dual Lock |



Structron® Superhandle® Extension Handle

- Threaded #5 Acme aluminum tip
- Fiberglass telescoping handle with collar lock, cushion grip
- Threaded tip replacement kit (60259)

| Item No. | Description |
|----------|-----------------|
| 60245 | 2' - 4' Handle |
| 60244 | 3' - 6' Handle |
| 60246 | 4' - 8' Handle |
| 60247 | 6' - 12' Handle |
| 60248 | 8' - 16' Handle |



Structron® Superhandle® II extension handle

- Threaded #5 Acme aluminum tip
- Fiberglass telescoping handle with cushion grip
- Threaded tip replacement kit (60259)

| Item No. | Description |
|----------|--|
| 60250 | 1' - 2' Handle with STĀ-LOK® & End Cap |
| 60251 | 2' - 4' Handle with Dual Lock |
| 60256 | 3' - 6' Handle with Dual Lock |
| 60252 | 4' - 8' Handle with Dual Lock |
| 60253 | 6' - 12' Handle with Dual Lock |
| 60254 | 8' - 16' Handle with Dual Lock |
| 60255 | 8' - 24' Handle with Dual Lock |



Structron® Straight Extension Handle

- Ultra tip milled from solid aluminum bar with fiberglass handle and 7" double dip grip (60280-60282)
- Threaded #5 Acme aluminum tip with fiberglass handle with vinyl end cap (60240-60242)
- Threaded tip replacement kits (60259 & 60279)

| Item No. | Description |
|----------|----------------------------|
| 60280 | 1" x 48" Handle, Ultra tip |
| 60281 | 1" x 60" Handle, Ultra tip |
| 60282 | 1" x 72" Handle, Ultra tip |
| 60240 | 1" x 48" Handle |
| 60241 | 1" x 60" Handle |
| 60242 | 1" x 72" Handle |

MISCELLANEOUS TOOLS

Solvent-Resistant Gloves

These nitrile, flock-lined, form fitting gloves are resistant to solvents used regularly within the coating industry. They are available in three sizes.



| Description | Size 9 - L | Size 10 - XL | Size 11 - XXL |
|---------------------------------|------------|--------------|---------------|
| Solvent-Resistant Gloves (Pair) | 46209 | 46210 | 46211 |

Disposable Nitrile Gloves

Powder free disposable nitrile gloves come 100 per box. Available in 3 sizes.



| Description | Size L | Size M | Size XL |
|----------------------------|--------|--------|---------|
| Heavyweight Nitrile Gloves | 46212 | 46216 | 46213 |

Recycled White Cotton Knitcloth

| Item No. | Description |
|----------|---|
| 46217 | 4 LB #5 Block Recycled White Cotton Knitcloth |



Non-Skid Shoe Covers

| Item No. | Description |
|----------|--|
| 46219 | Blue Non-Skid Shoe Covers - 10 Pair Per Pack |



Polyethylene Tape

Durable, moisture resistant sealing tape with a synthetic rubber-based pressure-sensitive adhesive. This tape is designed to adhere to a variety of surfaces and otherwise difficult-to-bond materials.



| Item No. | Description |
|----------|--|
| 46218 | PE35 2" Red Polyethylene Tape NEW |

Mixing Containers

| Item No. | Description |
|----------|---------------------------------------|
| 46221 | 1 Quart Mix & Measure Container |
| 46223 | 2-1/2 Quart Mix & Measure Container |
| 46225 | 5 Quart Mix & Measure Container |
| 46228 | 5 Gallon Project Bucket - Blue |
| 46229 | 5 Gallon Natural Mix & Measure Bucket |
| 46230 | 10 Quart Mix & Measure Container |
| 46235 | 5 Liter Mixing Pitcher with Handle |



Mixing Barrels

Mixing barrels can be hard to come by, reconditioned or new. The 15 gallon mixing barrel (European style) with fixed side handles and sealing lid is the standard. Used to mix more cementitious materials prior to application.

- HD polyethylene
- Belted lids
- Web or pegged handles



| Item No. | Description |
|----------|--|
| 46240 | 15 Gallon Mixing Barrel |
| 46250 | 15 Gallon Mixing Barrel - Reconditioned* |

*Subject to availability

Wide Boy™ Bucket & Liners

This bucket has a five gallon working capacity to save refill time. Designed for large jobs and the professional in mind. Resists solvents and paint buildup.

- 14" x 24" x 10"
- Built-in 19" wide roll-off area
- No tip design & heavy-duty 5/16" galvanized bail
- Comfort grip for moving when filled
- Durable, seamless, green polypropylene



| Item No. | Description |
|----------|--|
| 48467 | Sherlock® Wide Boy™ Bucket with Handle - 5 Gallon (8614) |
| 48468 | Quick N Clean™ Wide Boy™ Liner - 5-pk (R472) |

Stick-Ems™ Level Pegs

Stick-Ems™ Level Pegs are used to achieve a level surface. Use them with your leveling unit. Cut to height and stick this flexible, self-adhesive rubber / vinyl peg right to the substrate. Pour leveling product right over the top. The peg will not float to the surface and becomes part of the cement matrix. Gauged in millimeters up to 65 mm (2-1/2").



Small (65mm)
Pack of 100

| Item No. | Description |
|----------|-----------------------|
| 46280 | Stick-Ems™ Level Pegs |

Paint Trays & Accessories

| | | |
|-------|---|------------|
| 48466 | Big Ben® Tray - 1 Gallon Capacity (BR412) | |
| 48470 | Big Ben® Tray Liner (R478) | NEW |
| 48493 | Deluxe Metal Tray (R402) | |
| 48494 | Deluxe Metal Tray Liner (R406) | |
| 48530 | Acme™ Deluxe 5-Gallon Grid | NEW |



Self Leveling Kits

Complete kit includes all the items required to mix and install self-leveling products.

| Item No. | Description |
|----------|---------------------------|
| 67410 | 8 Piece Self-Leveling Kit |



MIXERS & MEASURING WHEELS

Low Viscosity Mixers

The Pro-Grade mixers are the choice of many contractors. These mixers have low shear for minimal air entrapment while mixing. The Pro-Grade mixers are constructed of quality powder-coated steel and are available in 2 sizes; a 1-2 gallon paddle with a 3-1/2" turbine style head on a 19-3/4" x 5/16" diameter hex shaft or a 2-5 gallon paddle with a 4-3/4" turbine style head on a 23-1/2" x 3/8" diameter hex shaft.

Jiffy Style Mixers are also available in two sizes; a 1-2 gallon and a 2-5 gallon. They are made of 304 stainless steel and fit all 1/4" - 3/4" chucked power tools. The blade actions are characterized by a smooth, thorough, non-air sucking and non-splashing action.

Our Helix mixers are made from polypropylene and specially designed to reach the bottom edges of the paint can for a thorough mix. It mounts to your hex-chuck power drill for impressive speed.

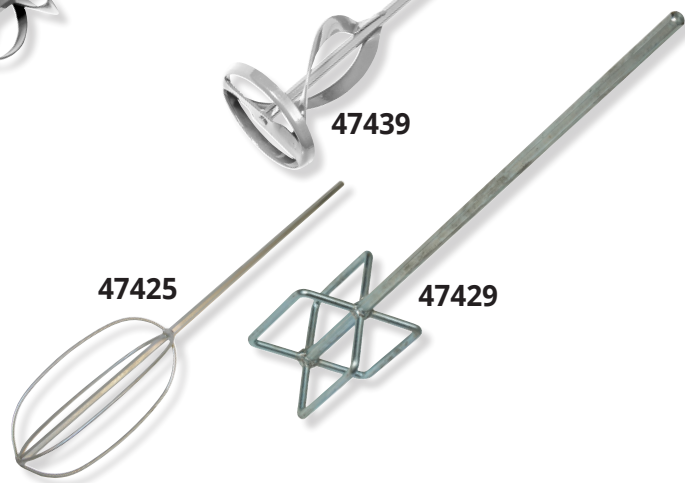
| Item No. | Description |
|----------|---|
| 47444 | Large Pro-Grade Low Viscosity Mixing Paddle, 2-5 Gallon |
| 47432 | Jiffy Style Mixer Blade, 1-2 Gallons |
| 47434 | Jiffy Style Mixer Blade, 2-5 Gallons |
| 47431 | 1 Gallon Helix Mixer |
| 47433 | 5 Gallon Helix Mixer |
| 47436 | 2-3/8" x 17" Paint Mixer |
| 47439 | 4" x 30" Paint Mixer |



High Viscosity Mixing Paddles

These mixers are used by those in the decorative concrete, and stamping markets. The "football" shaped cage configurations are ideal for mixing more viscous "topping" and cementitious materials. The larger 10" x 6" head is designed for barrel mixing. The smaller 6" x 4" head is ideal for 5 gallon quantities. Both mixers effectively remove air without splash-out. Both have an overall length of 26" with a hex shaft.

| Item No. | Description |
|----------|---|
| 47425 | Large High Viscosity Oval Mixing Paddle - 26" Shaft |
| 47426 | Large High Viscosity Oval Mixing Paddle - 36" Shaft |
| 47428 | Box Mixer, 5" Diameter, 7/16" x 30" Shaft |
| 47429 | Box Mixer, 5" Diameter, 7/16" x 23" Hex Shaft |



Measuring Wheels

A fast, practical way to measure distance, indoors or outdoors, on any surface.

| Item No. | Description |
|----------|--|
| 85701 | Kenyon® Small Telescoping 1' Measuring Wheel |
| 85703 | Kenyon® GroundScaper 3' Measuring Wheel |
| 85704 | Kenyon® GroundScaper 4' Measuring Wheel |
| 85712 | Kenyon® Wide-Trak 2' Measuring Wheel |
| 85713 | Kenyon® Pro-Grade 3' Measuring Wheel |
| 85714 | Kenyon® Pro-Grade 4' Measuring Wheel |



FLOOR MERCHANDISERS: Floor merchandisers can double or triple your inventory turns by attracting customer attention and maximizing space efficiently. We have several options available and can customize a display to fit your needs.



360 DEGREE TOWER MERCHANDISER

The 360 degree tower merchandiser only takes up 3 square feet of floor space and provides complete display of tools from three sides. Options are available which allow for all types of hooks and baskets to be utilized. Comes complete with gridwall, hooks, and full color signage.

SKU - 58015
NO TOOLS INCLUDED

SKU - 58016
NO TOOLS INCLUDED



MINI 2' MERCHANDISER

This small free standing display rack will allow you to display core tools while maximizing space. Comes complete with gridwall, legs, hooks, and full color signage

SKU - 58013
NO TOOLS INCLUDED



EXTENSION HANDLE RACK



SKU - YDIS104
NO TOOLS INCLUDED

BROOM DISPLAY RACK



SKU - 82999
NO TOOLS INCLUDED



MINI 2' FOOTWEAR MERCHANDISER

Set yourself apart by displaying various types of footwear with this 2' free standing display rack. Comes complete with gridwall, legs, hooks, and full color signage

SKU - 58014
FOOTWEAR NOT INCLUDED

Item No. Description

| | |
|---------|---|
| 58013 | Mini 2' Standard Display Rack - No Tools Included |
| 58014 | Mini 2' Footwear Display Rack - Footwear Not Included |
| 58015 | Merchandiser Display - Grids & Signs, Catalogs, Hooks - No Tools Included |
| 58016 | Merchandiser Display - Slatgrids & Signs, Catalogs, Hooks - No Tools Included |
| 82999 | Broom Merchandiser Rack |
| YDIS003 | 4" Black Steel Gridwall Hook |
| YDIS004 | 9" Black Steel Magazine Holder for Gridwall |
| YDIS008 | 8" Black Steel Gridwall Hook |
| YDIS104 | 20" x 20" Steel Rack for Fiberglass Extension Handles |
| YDIS107 | 10" Black Steel Pegboard Hook |
| YDIS181 | 10" x 36" Midwest Rake® Sign |
| YDIS185 | 12" x 24" Coating Application Sign |
| YDIS191 | T-Shaped Legs for Gridwall |
| YDIS209 | Shoe-In™ Promo Packet |

Item No. Description

| | |
|---------|---|
| YDIS214 | 36" x 36", Broom Display Rack |
| YDIS222 | 12" x 6" Acrylic Gridwall Shelf |
| YDIS224 | 22" x 7" Sign Holder for Gridwall |
| YDIS243 | 144" x 15" Three-Part Coatings Sign |
| YDIS244 | 48" x 15" Midwest Rake® Sign |
| YDIS274 | 10" x 48" Midwest Rake® Sign |
| YDIS290 | 4" Black Steel Pegboard Hook |
| YDIS291 | 18" Black Adjustable Roller Cover Basket for Pegboard |
| YDIS292 | Double Sided Roller Hanger for Pegboard |
| YDIS293 | 2' x 6' Black Steel Slatgrid |
| YDIS294 | 2' x 8' Black Steel Slatgrid |
| YDIS295 | 7" x 22" PVC, Double Sided, Footwear Sign |
| YDIS302 | EasySqueegee® Promo Pack |
| YDIS320 | SURESPIKES® Promo Pack |

MIDWEST RAKE®

COATINGS APPLICATION TOOLS, APPLICATORS & SUPPLIES



SEYMOUR MIDWEST • P.O. BOX 1674, WARSAW, IN 46581-1674
P 844-SEYMOUR (739-6687) • 574-267-7875 • F 574-267-8508
SEYMOURMIDWEST.COM