

Thompson Ecumenical
Empowerment Group

2002-2003
ANNUAL
REPORT

Building a Better Future

Empowering Individuals

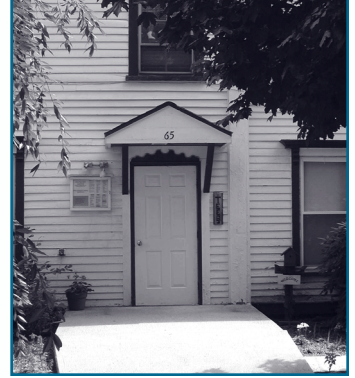
Engaging Our Community

Strengthening Families

Connecting Resources

The logo for Thompson Ecumenical Empowerment Group (TEEG) is centered within a circular frame. It features the letters 'TEEG' in a bold, dark blue, sans-serif font. Above the 'T' is a stylized upward-pointing triangle, and above the 'E's are two horizontal bars. The background of the entire cover is a blue-tinted photograph of a diverse group of people of various ages and ethnicities, all with their arms raised and hands clasped together in a circle, symbolizing unity and collective effort.

u-nite – (yö -nít) v. to bring people together in interest, attitude, or action



More than just a helping hand to those in need...

A resource to **unite** the entire community

TEEG's mission is to strengthen the local community by:

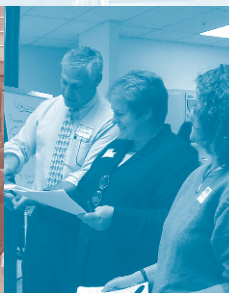
Empowering individuals to live independently

Strengthening families to live respectfully

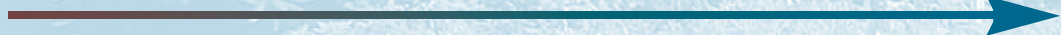
Engaging the community to work collaboratively

Connecting resources to promote a better future for all

15 Years of Service to the Local Community



1988



2003

Needs-Based Programs

*for Qualified
Families and Seniors*

Emergent Food Distribution
Monthly Commodity Distribution
Holiday Giving
Back to School Campaign
Operation Fuel
Salvation Army
Camperships

Open Programs

Community

Thompson Together
Healthcare Leadership Team

Youth

Thompson Youth Center
Thompson Youth
Leadership Team
Summer Fun Club
All Stars
Better Babysitter Club
Thompson Schools'
Half Day Program
Girl's Reflections
Girl Talk
Self Discovery

Parents

Parent Aide
Parent Support Groups
Anger Aside

Families

Parent/Child Play Groups
Parent as Teachers
Food Preservation Classes
Community Garden

Seniors

Weekly Distribution of Surplus
Food Items
Senior Health Education
Luncheon Programs
Senior Assistance Services
Senior Recreation

team-work – (têm wûrk)

n. cooperative effort by the members of a group or team to achieve a common goal



TEEG Staff

Donna Grant

Executive Director

Jenni Fountain

Office Manager & Grants Coordinator

Karen Daley

Community Services Coordinator

Tanya Rzeznikiewicz

Parents as Teachers Provider

Stephanie Lunt

Family Services Coordinator / Parent Aide

Phanindra Chakraborty

Fiscal / Accounting

Alicia Tucker

Receptionist / Food Security Program

Office Support Staff

Beverly Daniels

Barbara Lamothe

Dorothy Jarvis

Contracted Service Provider

Doreen Bentley

Community Development Project Manager



Message from the Director

My mother used to tell me, "Many hands make light work." It is an old adage that defines the essence of **teamwork**.

Teamwork is what TEEG is all about. It is how we started as an organization and it is how we continue to make a difference in the lives of individuals, families, seniors and the community as a whole.

The past year has been a very rewarding one for those of us who work at TEEG. We have realized great gains in our efforts to build community capacity for the betterment of all residents in our little corner of the world. At the same time, we've continued to provide the programs that have been at the heart of TEEG's services – in-home parenting education, food security for community residents, fuel assistance, case management and youth programs among many others.

One of our proudest accomplishments this year is the role we've played in building Thompson Together, a community-wide program to unite individuals to discuss town needs and residents' dreams. These discussions have turned into action plans, and the plans have led to results.

At TEEG, we are keenly aware that our potential as an agent of change can only be realized when we successfully engage the resources that already exist within our community. Through relationship building and hard work, TEEG, the Town of Thompson, the Thompson Public School system, and the residents of the northeast community have created a winning team. A team that indeed has many hands, and whose capacity knows no bounds.

Donna M. Grant

Executive Director

Table of contents

TEEG Programs.....	1
Message from the Director.....	2
TEEG President.....	3
Needs-Based Programs	4-5
Open Programs	6-9
Community	6
Youth	7
Parents.....	8
Families	9
Seniors.....	9
Financial Report	10
Volunteers	11
Donors/Sponsors.....	12
Be an Angel	12



Dear Thompson Residents,

After many years of service to TEEG and the Thompson community, and numerous hours of reflection, I have decided to relinquish the position of President of the TEEG Board of Directors. My years of service with the organization have been a wonderful and exciting adventure.

To see a tiny, non-profit service agency grow over a period of years to have a profound impact on the community it serves is indeed rewarding and a celebration of success. The cooperation between the recreation department, the local school, the library, religious organizations and various other groups in the community highlight the town-wide effort to put the pieces together and make Thompson a better place to live. I would like to say THANK YOU – it has been a pleasure to serve the community as TEEG President.

I would like to take this opportunity to introduce the young woman who will be taking my place as President of the TEEG Board. Her name is Dushy Mahendran. She and her family, Dr. Alexander Mahendran, two children and two stepchildren, have been members of the Thompson community since July of 1995. The Mahendran children attend Thompson Middle and Mary R. Fisher Elementary School. Members of the Thompson Congregational Church, Dushy and Alex have been active members of the TEEG board since July of 1998.

A graduate of the Massachusetts Institute of Technology, Dushy has worked in research and development at Prime Computer and Data General as well as serving as the Director of Engineering at EMC. Dushy currently owns her own consulting company. She has the strength, experience, and leadership skills to do an excellent job for TEEG. We are very pleased to welcome her and have her join us as President of the Board.

Sincerely,

Margaret Babbitt

1998-2003 President, TEEG Board of Directors

Board of Directors 2002-2003

- Margaret Babbitt, *President*
- Jim Naum, *V. President*
- Mercedes Robbins, *Treasurer*
- Donna Lynch, *Secretary*
- Jane Austin
- Norman Babbitt
- Georgia C. Ballard
- Alison Boutaugh
- Barbara Goloski
- Erica Groh
- Lucille Langlois
- Dave Kimball
- Kathy Kimball
- Alexander Mahendran
- Dushy Mahendran
- Barbara McGarry
- Anna Naum
- Barbara Pickett
- Fran Roy
- Robert Siminski
- Ada Temple
- Brenda Verdone



Dushy Mahendran

2003-2004 President, TEEG Board of Directors

Em-power – (ê m pou er) v.
to promote self-actualization;
to enable or endow with
an ability



A Helping Hand to Those in Need...

TEEG was founded as a human services organization to give aid and support primarily to Thompson's mill villages where the town's lowest income residents lived.

Over the years, our focus has changed from a handout to hands-up agency fostering the population's ability to help each other.

As part of our mission to **empower** individuals to live independently, we continue to administer several needs-based programs that require a proof of income for eligibility.

Thanksgiving Food –
294 people in 104 families
received food baskets

Christmas food –
224 people in 66 families
received food baskets

Christmas gifts –
339 people in 114 families
received gifts

Food Distributions
649 people in
325 households were served

Dental Kits
713 Kits were distributed to
Thompson individuals,
seniors and youth

The **TEEG Holiday Giving Program** is truly an amazing gift to those in need. As a sponsor of the program for eight years, TEEG is able to assist qualified families with holiday food and gifts. Donations come from everywhere churches, businesses, service organizations, and private citizens. Recipients who need help with the holidays are asked to give back to others by volunteering 10 hours of their time to assist someone in the community or at the TEEG offices.

Through the **TEEG Food Security program**, eligible individuals and families receive a monthly distribution of healthy and nutritious food to supplement their home pantries. Knowing they will receive food once a month enables people to stretch tight budgets. Without TEEG's support, many recipients including seniors and disabled individuals would have to choose between buying food or paying for medications, rent or utilities.

This year Tourtellotte Memorial High School played a huge part in helping to feed the community. A can drive at Thanksgiving brought 3,392 food items to local families. Also through a "February Fast," students donated their snack or lunch money for one day to a fund drive. This effort raised \$600, which in turn purchased \$8,316 of food at the Connecticut Food Bank to benefit Thompson families.

Local dentists also have come to the support of the Food Security Program at TEEG. Understanding the connection between dental health and the food we eat, TEEG includes a new toothbrush and oral hygiene products with each monthly distribution of food. Thank you, Dr. Schick, Dr. Lupien, Drs. McGinn and Dr. Mooney!



Each year, **TEEG's Back to School program** helps qualified families prepare children to return to school with the materials they need to be ready to learn. With the help of the Salvation Army, area doctors and private donations, we're able to provide book bags stuffed with school supplies.

97 children in 23 Thompson households received book bags

Every child should be able to partake in the fun and learning of summer camp. The **TEEG's Campership program** allows children from qualified families to attend camp for at least one week during the summer. Funding for Camperships are made possible by private donations and support of the Thompson Recreation Commission.

20 children from 10 families attended summer camp

TEEG is the area administrator for **Operation Fuel**, a program funded by the public utility companies "Add a Buck" campaign, the Access state program, the Salvation Army, and private donations from area businesses, individuals and organizations.

484 people from 187 households received fuel services

TEEG serves as the unit secretary for the **Salvation Army** in the Thompson community. With a goal to help those most in need, we provide emergency financial assistance for basic needs such as rent and car repairs.

17 people from 3 families receive financial assistance

It's hard to look among us and find someone who has never needed a helping hand. At TEEG, that's exactly what we have to offer. Whether it's emergent assistance, crisis intervention, a little bit of direction, or ongoing support, we are here...and we are glad to help.

Below are the income guidelines used to determine eligibility for many of TEEG's needs based programs (provided by the State of Connecticut, Department of Economic and Community Development, March 1, 2003).

	30% of Median	Very Low Income	Low Income
Family of 1	\$14,300	\$23,800	\$38,100
Family of 2	\$16,300	\$27,200	\$43,500
Family of 3	\$18,350	\$30,600	\$48,950
Family of 4	\$20,400	\$34,000	\$54,400
Family of 5	\$22,050	\$36,700	\$58,750
Family of 6	\$23,650	\$39,450	\$63,100
Family of 7	\$25,300	\$42,150	\$67,450
Family of 8	\$26,950	\$44,900	\$71,800



ec-u-men-i-cal – (e kyë-men-ikel)
adj. open; of worldwide scope
or applicability; universal

A Resource to Unite the Entire Community...

TEEG was created in 1988 with a singular mission: To empower individuals and families to achieve their highest level of independent living. Our primary purpose was to provide low-income families with outreach, enrichment and educational programs.

Today, our mission is far more encompassing. Empowering individuals is just one of four primary goals. The majority of our programs today are open to the community regardless of financial need.

Our name – Thompson **Ecumenical** Empowerment Group – embodies our commitment to provide programs that benefit all aspects of our community.



Community Development Programs

One of TEEG's proudest accomplishments in 2002 was the instrumental role we played in the development of two community-wide initiatives.

Thompson Together is a unification program to connect the resources, talents and passions of all of Thompson's residents, business and institutions. It is an asset engagement process aimed at making our community a healthier, happier place to live and raise our children. The community response to Thompson Together has been overwhelming. People from all areas of town are actively participating in economic, education, environmental and community development initiatives. The ultimate goal is to impact local policy to build a better future for all.

Two Community Conversations on "Democracy and Diversity" have given voice to stimulate civic involvement.

The Environmental Work Group designated May as Thompson Beautification Month. Several community events were organized including an 8th grade class assembly, a community pride day, and a town-wide roadside clean-up.

The Communications Work Group created the Town of Thompson web site.

The Early Education Work Group has initiated the development of a Community Resource Directory of local and statewide services.

The Youth Leadership Initiative has begun to plan and implement the creation of a new Skate Board Park.

The **Community Healthcare Leadership Team** is working to develop the Thompson/Putnam Wellness Center. The team is a partnership between Day Kimball Hospital, the Northeast District Department of Health, and the towns of Putnam and Thompson. The facility will offer primary care, preventive healthcare and community wellness programs. Many uninsured or underinsured residents will benefit from this new community resource.

300 people participated in
two conversations

300 people collected more than
8 tons of trash from over
135 miles of roadsides

www.thompsonct.org



Youth Programs

Children are our future. It truly does take a village to teach them to be confident, aware, responsible, and contributing individuals. As a society, it is vital that we help all children develop and grow. In providing Youth Programs, TEEG focuses on the individual. We get to know every child and understand his or her needs. Our goal is to teach them the meaning of values, the concept of consequences and significance of making the right choices in life.

A collaboration between TEEG and the Thompson Recreation Department, the **Thompson Youth Center** has provided a great opportunity to enrich Thompson youth with many social and educational programs such as tutoring, healthy relationships education, community services, dances, and dinners.

All Stars is a weekly after school program for Thompson 6th and 7th graders. Facilitated by TEEG, the Youth Center, and staff from the Thompson Middle School, All Stars helps pre-teens make connections between the future they want to create and the behaviors that will get them there.

Summer Fun Club is an experiential program that takes Thompson youth on various excursions for fun and learning. This year's Summer Fun Club worked with the Thompson Children's Librarian to promote early literacy and encourage summer reading. A book list was developed relating to the many adventures the children enjoyed such as trips to Old Sturbridge Village, the Ecotarium and Southwick Zoo.

120 youth participated in the Thompson Youth Center

18 students graduated and received sterling silver All Star rings

51 K-4th graders participated in 9 different trips

Parent Programs

At TEEG, we believe making a difference in the life of a parent is the first step to strengthening family systems, which in turn positively affects the social structure of the entire community. Through our Parent Programs, we provide families in Thompson and surrounding communities with support, guidance, resources, and recreational opportunities.

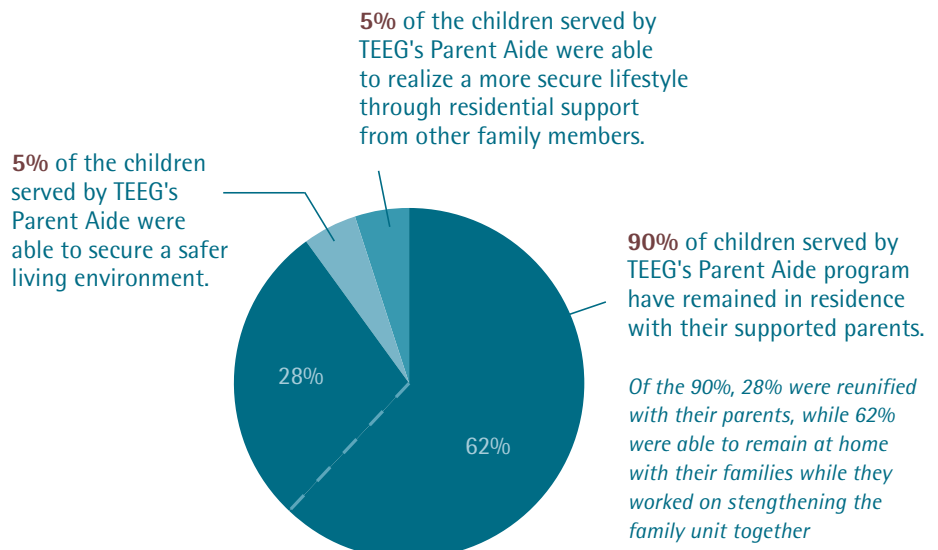
54 individuals from 35 families were helped by TEEG's Parent Support Group.

Parent Support Group, or "Parent's Night Out", is a weekly support group for families and children. Facilitated by TEEG's Parent Education Coordinator, parents come together to discuss a variety of topics concerning family life. Discussions range from "Sex Education: What do your children know?" to "New Techniques for Managing Stress" to "Power Struggles: Navigating Your Way to a Healthier Parent/Child Relationship."

5 families with children ages birth to three years old participated in parents as teachers

Parents as Teachers encourages healthy families by educating parents about the resources and tools to set family goals and empower better decision-making. The objective of the program is to help parents learn new ways to foster their children's language skills, intellectual growth, social skills, and gross and fine motor skills. Through a series of home visits, TEEG's certified Parents As Teachers Educator shares information on child development, age-appropriate activities, and tips on how to assess a child's social, emotional, and physical development.

Parent Aide is a home-based education service, which aims to improve all aspects of family life and keep families together. The program is staffed by a parent educator who meets with the family for a minimum of one hour per week. The family and the parent aide join together to assess problem areas and set appropriate goals. In addition, the TEEG Parent Aide is often considered a link between the family and external systems such as school, community and social service agencies.





Families

Strengthening families is a central part of our mission at TEEG. Our family programs encourage parents and children to develop healthy, respectful relationships with each other while meeting new families and making new friends.

During **Parent/Child Playgroup**, children learn and develop emotional, physical, social, and intellectual skills appropriate to their age and needs.

19 parents and 37 children participated for fun and learning

TEEG's **Young Parents Playgroup** was introduced in 2002 for parents up to twenty-five years old and their children. Specific activities included programs and speakers such as: Claytime with pottery pieces; baby massage classes; seminars on nutrition, immunization, first aid and CPR; and community presentations from representatives of Headstart, Thompson Public Library, and Planned Parenthood.

16 parents and 20 children participated



Seniors

Seniors are an invaluable part of the Thompson community. They connect us with our past and generously share their life experiences, talents and wisdom. TEEG is committed to helping seniors lead active, involved, healthy, and independent lives. Throughout the year, our programs provide Seniors with vital services as well as entertainment and social activities.

Case Management Services are offered to assist seniors in daily activities such as filling out confusing forms, financial management, meal planning and shopping.

More than 250 seniors received assistance

Recreational Programs allow seniors to stay connected with friends, family and the community. Activities organized by TEEG include intergenerational outings, Thanksgiving and Easter dinners at senior housing locations, trips to all Bradley Playhouse productions, holiday caroling, and Summer Fun Club trips.

209 seniors participated in recreational activities and programs

TEEG is an outlet for seniors to participate in **Volunteer Opportunities**. We could not accomplish all that we do without the generous help of the many seniors who donate their time and talents to projects such as food distributions, mentoring and tutoring Thompson children, driving other seniors, and administrative support tasks.

20 seniors provided 1,320 hours of volunteer service to TEEG

Through a partnership with Day Kimball Hospital, TEEG was able to bring a series of three **Health Education** seminars to seniors at each of the three housing complexes in the town of Thompson. Topics were selectively chosen by geriatric specialists to cover issues most important to seniors' health: anxiety and depression, osteoporosis, and exercise.

69 seniors attended six Health Education seminars

part-ner-ship – (pärt ner-shîp)

adj. mutual cooperation and responsibility in the achievement of a specified goal

Federal

- Senior Resources Agency on Aging
Senior Outreach
- CDBG
*Parent Education
Community Services*

State

- Department of Social Services
Social Services Block Grant
- EastConn
Supervised Visitation
- Department of Children and Families
*Parent Aide
Parent Education & Support Center*

Municipal

- Town of Thompson
Local Match for Thompson Programs
- Thompson Public Schools
Safe School Grant

Private Foundations

- William Casper Graustein
Memorial Foundation
Early Education Initiative
- Parent Trust Fund
Parent Engagement & Civic Training

Faith-Based Support

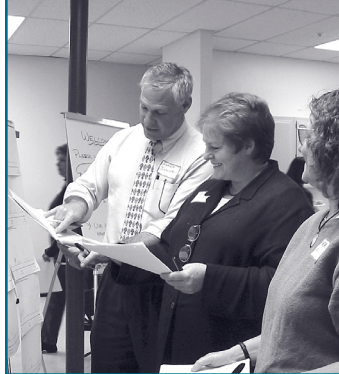
- Episcopal Bishop's Fund
Summer Fun Club
- Campaign for Human Development
Food Security Program

Public/Private Partnerships

- Operation Fuel
Fuel Bank

Community Support

*Corporate Donors
Business Partners
Individual Contributions
"Be an Angel" Campaign
Have A Heart*



About the Budget

Stability requires two things – planning and **partnerships**. At TEEG, we have been fortunate to enjoy the benefits of both.

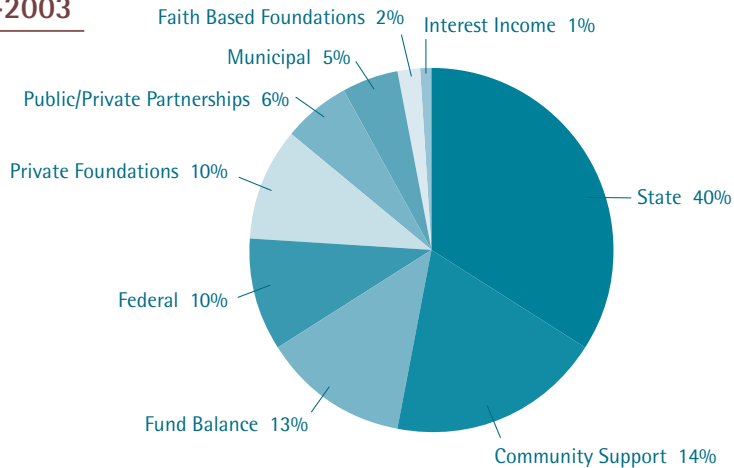
Sound financial planning over the past five years has allowed us to plan for rainy days – and this year brought more than a few showers. The State budget crisis trickled its way down with the news of a \$50,000 contract that would

go unfunded. While similar news devastated some agencies around Connecticut, TEEG was able to makeup the shortfall. We were able to continue to provide our full level of programming and still close the books in the black.

The strength of our fiscal planning could not have been possible without the supportive partnerships that we have established with residents, the town of Thompson, local businesses, private foundations, State agencies and Federal programs. Even in these economically difficult times, TEEG succeeds by bringing together the many hands of our partners and our community.

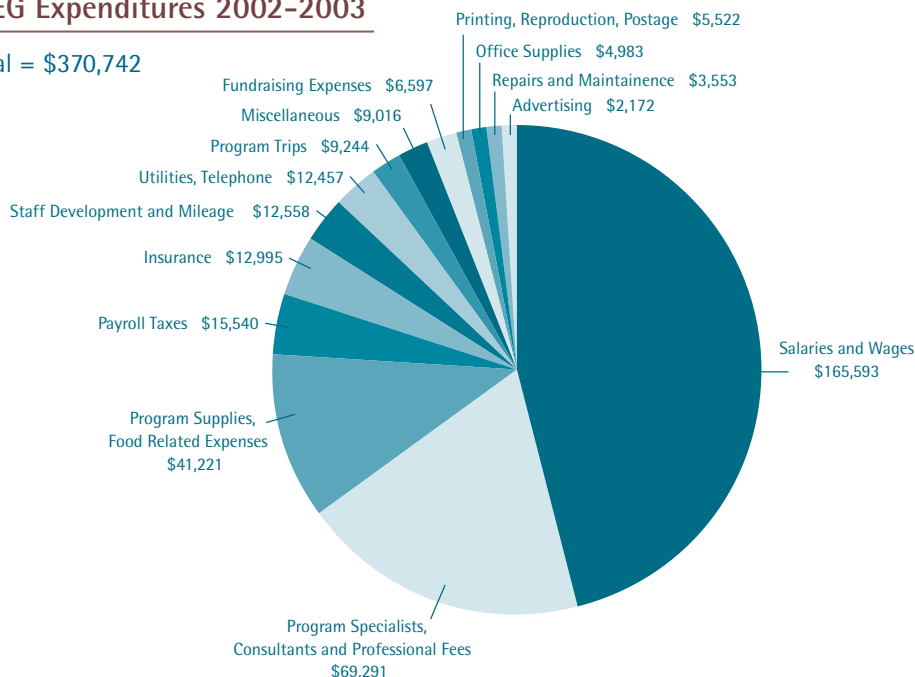
TEEG Income 2002–2003

Total = \$370,742



TEEG Expenditures 2002–2003

Total = \$370,742





If community spirit is the heart of TEEG, than volunteerism is our soul.

Every program we provide is made possible through the hard work and dedication of our volunteers. Our agency's leadership is provided through a volunteer Board of Directors; our Food Security reaches hundreds of residents every year because volunteers make it happen; our lawn gets cut, our gardens weeded and our children supported all because there are people willing to donate their time, their resources and their abilities to make things happen in our community.

For all of you who are interwoven into the fabric of our success, we at TEEG and those we serve are forever **grateful**.

Special thanks go to MAD Communications and Pelton Graphics for donating their time and creative talents to develop our 2002-2003 Annual Report.

grate·ful – (grät`ful) adj.
appreciative of benefits
received; thankful

Over 1,500 hours of Volunteer Service for TEEG provided by:

- 20 volunteers in senior outreach
- 32 volunteers in food security
- 15 volunteers for office/grounds
- 13 volunteers for youth programs
- 21 volunteers serving as Directors

- | | | | |
|-------------------|-------------------|-------------------|--------------------|
| Martha Adams | Raymond Cote | Dick Jacobson | Becky Myers |
| Sherrri Allen | Jessica Cotnoir | Janet Jacobson | Cindy Myers |
| Bob Baker | Bev Daniels | Richard Jacobson | Richard Negip |
| Amanda Barthlette | Joanna Dash | Dot Jarvis | Network Inc. |
| Rita Barthlette | Flo Davis | Rick Johnson | Denise Noiseux |
| Jan Bates | Kathy Davis | Billy Kachuck | Kristopher Noiseux |
| Nikki Beaulieu | Matilda Deotte | Dickie Kachuck | Dusten Norman |
| Tony Beaulieu | Tillie Deotte | Scott Kaminski | Kathy Orouke |
| Brenda Benette | Adrienne Dicarlo | Dave Kimball | Robert Passay |
| Diane Benette | Loretta Dickerson | John Krogul | George Pepin |
| Dot Bergeron | Bernard Ferland | Barbara Lamothe | Phil Pollier |
| Melissa Bixby | Tom Fitzgerald | Robert Lamothe | Tina Porter |
| Paul Bixby | Helen Fontaine | Rose Laskowski | Barbara Ratcliffe |
| Dolores Blain | Matthew Girard | Auther Lewis | Clair Rochelleau |
| Maurice Blaine | Gabe Grant | Amanda Lincoln | Susan Rogers |
| Gene Blaze | Shelby Grant | James Lincoln | Pam Santeere |
| Violet Bourdeau | Dan Greene | Anthony Lozada | Matt Sasser |
| Akelia Bumpus | David Greene | Debbie Lozada | Joey Skeens |
| Noella Carita | Doug Gremo | Karen Lunt | Caleb Thomas |
| Jeffery Carr | Ashley Henry | Michael Lunt | Bob Tripp |
| Knyisha Clinton | Diamond Henry | Jim Mack | Damien Tripp |
| Monica Clinton | Douglas Henry | Miah Manning | Marcia Tripp |
| Larry Collie | Norman Henry | Paul Mayo | Robert Tripp |
| Karin Collins | Billy Higgins | Josh Mooney | Timmy Tripp |
| Doris Cooper | Chris Hunt | Christine Morency | Alicia Tucker |
| Frank Corvese | Nicole Hunt | April Moulton | |
| Charlyne Cote | Phyliss Hunt | Kurt Moulton | |
| Jennifer Cote | Kelly Ignasiak | Barbara Mulligan | |



gen-er-ous – (jen er-ous)

adj. liberal in giving
or sharing

Be an Angel

A simple phrase, but not a simple request. To be an angel, one must put others ahead of themselves... to being willing to support the common good... to openly promote acts of kindness and compassion.

In today's insular, fast-paced world it can be hard to find the angels among us. But not at TEEG.

The mailing of this Annual Report begins TEEG's seventh annual "Be an Angel" campaign.

Thank you from the bottom of hearts for your continued support.



Support for TEEG programming comes from far and wide. We want to thank all of the local businesses, organizations, and individuals who have **generously** cared enough to reach beyond themselves in support of the greater community. This year we would like to thank Mr. and Mrs. John Bayer, former members of the TEEG board of directors, for serving as honorary chairpersons for the 2003-2004 Angel Campaign.

Sponsors

Apex Technology Group
Archambault Insurance Associates
BARR, INC.
BCS Company
Church's Custom Heating, Inc.
Citizens National Bank
D&P Water Systems
Day Kimball Hospital
Gilman & Valade Funeral
Hometown Properties
Johnson Corrugated Products
JUST PAINTING
K & R Automotive, Inc.
Kerrin Graphics 7 Printing, Inc.
Laframboise Well Drilling, Inc.
Landry's Flooring
Lord Thompson Manor
Putnam Savings Bank
Quinn & Company, LLC
Rondeau's Garage
Wizard Candles, Inc.

Donors

Individuals

Linda Adams
Joseph & Claire Adiletta
Saul & Sandra Ahola
Cecile Alim
Shawn, Tracy, Lily, & Olivia Allen
Gary & Anne Alves
Carl Anderson
Jane Anderson
Katherine Anderson

Megan Anderson
Charles & Alice Archambault
Tim & Lisa Arsenault
Raymond & Jane Austin
Norm Babbitt
Peg & Dave Babbitt
Virginia Babbitt
William Bainbridge
Charles Balch
Clarence & Georgia Ballard
Denis Ballargeon, MD, FCCP
Ruth Barks
Jeffrey & Wendy Barske
Bernard & Eunice Bastek
John and Barbara Bayer
Marcel & Gloria Beauregard
Bernice & William Bednaz
Lawrence & Arlene Bellerose
Robert & Doreen Bentley
Margaret Bibek
Mike Bogdanski
John Boland
Harold Bolduc
Heather Bonitz
Arthur & Elizabeth Bourbeau
Henry & Estell Bourgeois
Alison Boutaugh
Edward & Diane Bradley
Shawn & Tara Brissette
Yvette Brissette
Gregory & Tonya Brock
Robert & Stella Brodeur
Dave Brooks
George Cameron
Joseph Capasso
Brian Charbonneau
Carl & Carmen Charbonneau
Edward & Linda Charlton
Arabinda & Nita Chatterjee
Ronald & Anne Chrzanowski
Richard & Rochelle Cimochoowski
Robert & Marquerite Cloutier
Floyd & Jean Cole
Lloyd Colwell
Peter & Sharon Contois
Donna & David Copeland
Shirley Corey
Susan Corey
Marshall Curtiss
Karen Daley
George Dargati
Bob & Cheryl Darling
John Day, Jr.
John & Cynthia de Bruyn Kops III
Nick & Ann De Luca

Christian Dee
Leo & Shirley Demers
Cathy Denton
Jeanne Desautels
A. Joyce Desruisseau
Michael & Ann Dion
Rania Baik & Robert Dion
Joseph & Mary Jean Donovan
Mary Ann & Kyle Dostaler
Dorothy Dowell
Dorothy Drinkwine
Irene Duquette
Jefrey Durocher
Christopher & Judith Eichner
Harry & Ruth Elliott
Jane Ellison
David & Phyllis Emigh
Cathy Engle
Susan Esons
Judith Fairley-Beaulieu
Ted & Mary Fatsi
Joseph & Donna Fenner
Mark Fenner
Helen Flood
Gary & Jenni Fountain
Richard & Jeannine Fournier
Andrew Franklin
R. J. Franzino, MD
Linda Garcia
Kenneth Gardner
Cheryl Gaudreault
Marion Gebhardt
Frances Gesualdi
Ed & Beth Goldsmith
Constance Gomes
Kate Gorczynski
Michael Graveline
Daniel Greene
David Greene
Reba Greene
Ruth Gregoire
Lawrence & Erica Groh
George & Sandra Groom
Pam E. & Jon H. Haggerty
Rachel & Kathleen Haggerty
Betty Hale
Phil Halloran
Betty & Michael Hanatow
Jennifer Harnois
Sarah Hemmingway
Bill Higgins
Dr. James Hillman
Neri Holzer
Arthur Hopkins
Richard & Ann Hougasian

Dora Hrabos
Louise & Steven Hurchala
Roman Jamieson
David & Jane Johnson
Linda & Edward Johnson/Rose
Shawn & Rachael Johnston
MaryEllen & Jason Jones
Elizabeth Kaluzewicz
Alice Kitka
Ronald & Joy Klare
John Knight
Casey Koller
Ron & Judy Kosiba
Peter & Theresa Krawiec
Joseph & Carol Kudzal
Pauline & Francis LaFramboise
Paul Lajoie
Raymond Lamiotte
John Lamont
Barbara Lamothe
Al & Lynn Landry
George & Grace Landry
Lucille Langlois
Christy LaPalme
Joseph & Florence Laroche
Robert & Ernestine Lary
Richard & Judith Lawton
Joseph & June Lebeau
Jeanette Lespasio
Philip & Susan Leveille
Joan & Kevin Levesque
Kathleen & Stephen Lewis
Ruth & Constantino Lippiello
Samuel Lomerson
Louise Longo
Peter Lopriore
Richard & Barbara Loy
Anthony & Deb Lozada
Roland & Wendy Lupien
Roland Lupien, DDS
Edward & Barbara Luther
Brian & Donna Lynch
James Mack
Patricia Maher
Nancy Mahneke
Julia Mahon
Anna Marcini
Michael & Victoria Martin
Dorothy Matthias
Keith Maximowicz
Edmond & Dorothy Maynard
Eric Mayo
Muriel Mayotte
John & Dorothy McCormac
Francis & Barbara McGarry

Carolynn & Walter McGinn, DMD
Theresa & Timothy McManus
Danny & Lynne Migneault
Joanne Minarik
Robert Mitchell
John Modica, MD
Fredric & Ethelinda Montfort
Sandra Montgomery
John Mooney, DMD
Rene & Lynne Morin
Robert & Barbara Mulligan
Mark & Patricia Munsch
Kathleen Murphy
Michael Murphy
Jim & Anna Naum
Debra Neundorf
Maureen Ritchie Nicholson
Anne Nizamoff
William Nizamoff
Lynn & Tim O'Brien
Norma O'Leary
Agnes & James Oleksiak
Joseph Oleszewski
Len Olson
Renee Ondrasek
Lisa Oransoff
Janice Bates & Kathryn O'Rourke
Francis Orszulak
John & Irene Papierski
David & Mary Patenaude
Nancy Pedersen
David & Linda Peiczarka
Tyler & Nancy Perkins
Thomas & Priscilla Perkinson
Allan & Emily Petterson
Michael & Monique Picard
Thomas & Kathleen Poplawski
Nikki & Bruce Price
R. Andrew & Janice Putnam
Jim & Rita Raftery
Herb, Cathy & Claudia Rathbun
Mildred & Robert Reynolds
Frederick & Barbara Rich
Jayne Robbins
Mercedes Robbins
Michael Roberts
Mary Roncalli
Deborah Ross
Jane Rovero-Kruzel
Dan & Fran Roy
Nancy Roy
Tish Roy
Dan Roy Jr.
Deborah & Mark Russell
Elaine Rzeznikiewicz
Tanya Rzeznikiewicz
James & Jeanne Sali
Michael & Anita Santerre
Mark & M. Ramona Savolis
Arthur Schick, DDS
Chris Schmitt
Irving & June Schoppe
Nicholas & Jill Scola
Robert Siminski
James Skrzypczak

Linda Smith
Brian Solitro
Sue St. Onge
Sam & Marina Stilwell
Charles & Laura Sullivan
Tom Sullivan
Alicia Summar
Clifford Svenning
Rolf Swanson
Richard & Barbara Taylor
Dorothy Teguis
Eleanor Teguis
Ada Temple
Elisabeth & Robert Thompson
Richard & Suzanne Thompson
Karl Tieber
Michael & Marguerite Tomany
Taryn Topazio
John Torrey
Daniel Touchette
Dick Trayner
Bob Tripp
Beatrice Trudeau
Donad & Mary Turnquist
Kathleen Tuttle
Michael & Alecia Underhill
Barbara Ungerer
Marianne Vanghel
William & Helen Vannieuwenhuyze
Robert Vincent
Renee Waldron
Susan Waldron
Martin & Linda Walsh
Estate of Phoebe-Lou Weeks
Robert & Carol Werge
Marjorie Wheeler
D.E. & Donna Williams
Felicia & Vernon Wilson
Richard & Charlotte Wisneski
Frederick & Aileen Witkowski
William Witkowski
Robert Wood
David Yeager, MD

Businesses & Organizations

A-1 Septic Service
Acts II Ministries, Inc.
American Rent-All, LLC
American Storage
Balfour Farm
Barrette's LLC
Big Y Food Industry Crusade
Bill's Bread and Breakfast
Blackmer Farms
Book Lovers Gourmet
Bousquet's Appliance
Brighter Skies Balloon Co.
Bruce Thomas Licensed
Massage Therapist
Cableworks Inc
Celebrations
Charter Communications
Chase Road Growers
Christ Church of Pomfret
Cobbcroft Studio

Colonial Club
Congregational Church of Putnam
Congregational Church
of Thompson
Connecticut Farm and Pet
Country Kitchens
Crabtree & Evelyn
Cranston Foundation
CRF Interior Systems
Ct Audebon Society
Danielson Surplus Sales
Daughters of Isabella
David's Styling
Day Kimball Hospital
Deary's Gymnastics
Diamond A Ranch
DKH & Byrnes Agency
DMB Design The Flowers Bed
Drive to Victory
Dumas's
East Woodstock Congregational
Church
Electric Boat
Emanuel Lutheran Church
Empire Travel
Fosket's Equipment
Friendship Valley
Frito Lay, Inc.
G-7 Caterers
Garden of Eden
Gene's Furniture Loft
GEOTOXI Associates, Inc.
Gladys Green & Pine View
The Graustine Foundation
Habit For Humanity
Hilltop Ceramics
Home Town Heating
Hull Forestry
Jason's Restaurant
Jim's Pizza
JRK Accounting Services
Judy's Affordable Fabric
Kelly's Tires
Kikapoo Pizza
King's Oldsmobile
Kingsbury Excavating & Septic
KMART
L'apres Midi Club
LB's Family Restaurant, Inc.
Liberty Mutual
Loadrunners
LTM
Mainly Seafood
Meadow Brook Framing
Midtown Fitness
Nash's Garden Center
Norwich Navigators
NUMA Drilling
Platt Associates Real Estate
Appraisers LLC
Pomfret Spirit Shop
Putnam Auto Parts
Putnam Elk's PBOE Lodge 64
Putnam Emblem Club
Putnam Farmers Co Op

Putnam Ford Mercury
Putnam Medical Associates, P.C.
Putnam Rotary Club No. 1382
Putnam Super Market
Raceway Golf Club & Restaurant
Rainbow Furniture
Rawson's
Roland's Cleaners
Salon One
Sam Wibberley Tire Auto
Servie Center
SBC SNET
Shaw's Office Center
Silver Bike Shop
Something Sweet By Michelle
St. Joseph Catholic Church
St. Stevens Catholic Church
St. Philips Episcopal
Stop & Shop of Putnam
Sunflowers
Sunrun Gardens
Sunset Nurseries
Sunshine Shop Inc.
Taylor's Corners
The Cleaning Lady
The Congregational
Church Of Putnam
The Cranston Foundation
The Flowering Vine
The Four Corners Restaurant
The Harvest
The Healthy Lady
The Lural House
The Scrapbook Shoppe
The Shop
Therapeutic Enterprises, Inc.
Thompson Area Boy
Scouts & Girl Scouts
Thompson Auto Care
Thompson Florist
Thompson Housing Authority
Thompson Library
Thompson Lions Club
Thompson Recreation Department
Thompson Speedway
Thompson Thimble Club
Thornfield Hall
Timberdoodle Designs
Tricia's Hairstyling
United Way of The Capital Area
United Way of Tri-County
Vanilla Bean
Village Hardware
Village Restaurant
Wellington Curtain
Windy Acres
Wizard Candle
Woodstock Medical Group, P.C.

Thank you to all of our many supporters. While we have made every attempt to recognize those who generously shared their financial resources, and respect the anonymity of those who asked, we hope we have not left anyone out. We couldn't do it with out you.



VOLUNTEER • DONATE • PARTICIPATE • CHAPERONE • CONTRIBUTE • RECEIVE

Thompson Ecumenical Empowerment Group, Inc.

P.O. Box 664, 65 Main Street, N. Grosvenordale, CT 06255
phone (860) 923-3458 • fax (860) 923-5770 • reachteeg@earthlink.net