

Experience the Quaboag Hills Region

2012-2013 Recreation Guide

Guide to the
2012 Brimfield
Antique Shows

May 8-13
July 10-15
Sept 4-9



Quaboag Hills
CHAMBER OF COMMERCE
YOUR REGIONAL BUSINESS RESOURCE

Sawmill River Farm
West Brookfield, MA
Oil painting by Holly Pelton

Quaboag Hills
R E G I O N
OF CENTRAL MASSACHUSETTS

OUR TOWNS:
Belchertown
Brimfield
Brookfield
East Brookfield
Hardwick
Holland
Monson

New Braintree
North Brookfield
Palmer
Spencer
Wales
Ware
Warren
West Brookfield



*A Delicious Feast
At A Price
You Can Afford!*

Carmella's Italian Kitchen

Sunday 12 noon-9 pm • Mon - Thur 11am-9pm • Fri. & Sat. 11 am-10 pm

55 South Maple St. Route 9, Brookfield

508-867-5475

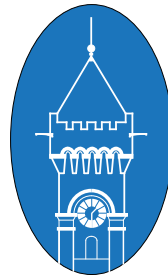
www.carmellasitaliankitchen.com

Southbridge

HOTEL & CONFERENCE CENTER



203 Guest Rooms
Banquet Facilities
Health Club
Conference &
Meeting Rooms
Lounge
Wireless Internet



14 Mechanic St.
Southbridge, MA
508-765-8000
www.southbridgehotel.com

table of contents

Welcome.....	2-3
Calendar of Events.....	4-9
Accommodations.....	10-11
Antiques.....	12-16
Attractions.....	18-25
Farms, Orchards & Nurseries.....	26
Restaurants.....	28-29
Services.....	30-32
Shopping.....	35-36



Special thanks to
Country Bank, Spencer Savings Bank, and North Brookfield Savings Bank for their sponsorship of the Calendar of Events section.

Your local hometown newspapers!

Barre Gazette
The Journal Register
Quaboag Current
The Sentinel
Shopping Guide
The Town Common
Ware River News

Turley 
Publications, Inc.

www.turley.com
800-824-6548



Produced by:
Quaboag Hills Chamber of Commerce
& Peg Gorman
Designed by: Pelton Graphics
Printed by: Turley Publications

Stimulating economic development through tourism.
(413) 283-2418 • www.qhma.com



Visit us on Facebook

Chambers mobile website



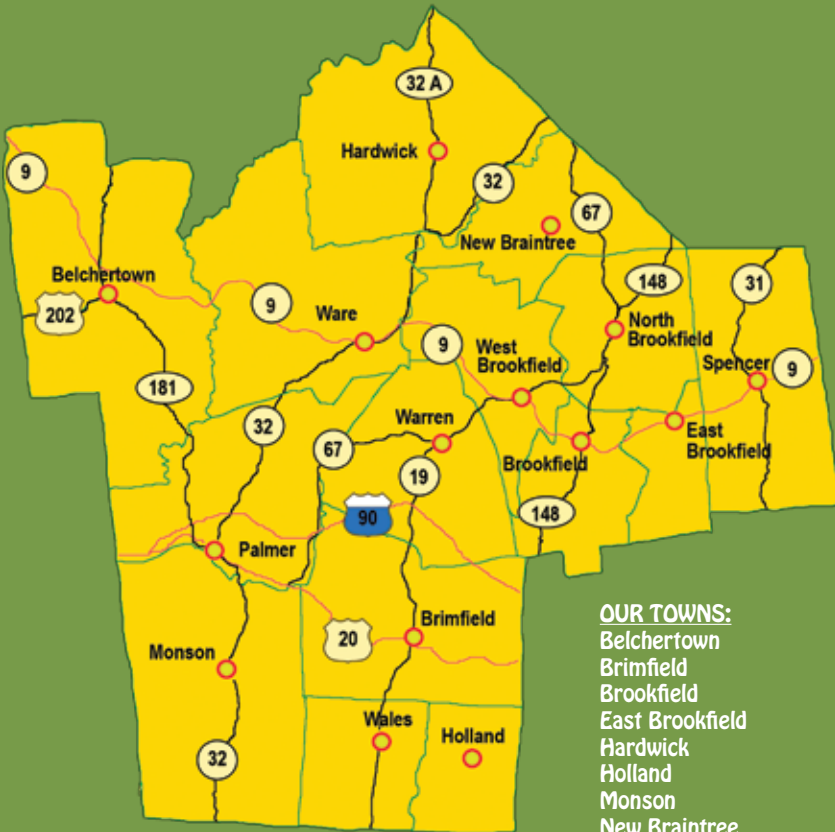
VISIT US AT WWW.SPENCERFAIR.ORG

Welcome to the Quaboag Hills Region

We're classic New England, and proud of it.

Come see the History. First came the native Quaboags and Nipmucs, then the Puritan settlers, then King Philip's War, Ben Franklin's Post Road, the Colonial Revolution, the Industrial Revolution, and even today's high-tech revolution. Artifacts abound, especially at our antique shops and world famous Brimfield Antique Shows.

Perfect for a drive. Curving roads. Stone walls. Majestic maples. Over every rise and around each bend comes a new discovery far from the beaten path. Wander our country roads. Kick back on our village greens. Get to know the Quaboag Hills, and get to know the real New England!



OUR TOWNS:

Belchertown
Brimfield
Brookfield
East Brookfield
Hardwick
Holland
Monson
New Braintree
North Brookfield
Palmer
Spencer
Wales
Ware
Warren
West Brookfield



calendar of Events

FARMERS MARKETS

May 24 to October 11

BELCHERTOWN FARMERS' MARKET

Main Street & E Walnut St.,
Belchertown Common
Thursday, 2:00 pm - 6:00 pm
WIC & Senior Coupons Accepted
EBT-SNAP Not Accepted

April 14 to November 17

BRIMFIELD/HITCHCOCK ACADEMY FARMERS' MARKET

2 Brookfield Road
Hitchcock Free Academy Community
Center WIC & Senior Coupons Accepted
EBT-SNAP Not Accepted

June 22 to September 28

BROOKFIELD FARMERS' MARKET

Rt. 148 and Rt. 9, Town Common
Friday, 4:00 pm - 6:00 pm
EBT-SNAP Not Accepted

June 10 to October 28

HARDWICK FARMERS' MARKET

Barre Rd. & Common St.,
Hardwick Common, Rt. 32A
Sunday, 11:00 am - 2:00 pm
WIC & Senior Coupons Accepted
EBT-SNAP Not Accepted

May 24 to October 4

MONSON FARMERS' MARKET

5 High Street, First Church Parking Log
Thursday, 3:00 pm - 6:30 pm
WIC & Senior Coupons Accepted
EBT-SNAP Accepted

May to October

NEW BRAINTREE FARMERS' MARKET

1890 Barre Rd., B & B Farms
Thursday, 3:00 pm - 6:30 pm
WIC & Senior Coupons Accepted
EBT-SNAP Not Accepted

May to October

PALMER/THREE RIVERS FARMERS' MARKET

Center of Town, Main St.,
Town Common
Monday, 2:00 pm - 6:00 pm
WIC & Senior Coupons Accepted
EBT-SNAP Not Accepted

June 2 to October 6

SPENCER/KLEM'S FARMERS' MARKET

117 West Main Street
Saturday, 9:00 am - 1:00 pm
WIC & Senior Coupons Accepted
EBT-SNAP Not Accepted

May to October

WARE FARMERS' MARKET

104 West St., Next to CVS
Saturday, 9:00 am - 12:30 pm
WIC & Senior Coupons Accepted
EBT-SNAP Not Accepted

May to October

WEST BROOKFIELD FARMERS' MARKET

Rt. 67 & Rt. 9, Town Common
Wednesday, 3:00 pm - 6:00 pm
WIC & Senior Coupons Accepted

May 8-13

BRIMFIELD

Brimfield Antique Shows
Rain or Shine! QHMA.com or
Brimfield.com

May 12

BELCHERTOWN

Footloose Competition
Team Tag Sales
On the common 8am-1pm

May 12

PALMER

Palmer Events Planning
presents our annual Town
Wide Tag Sale
Maps can be purchased for \$2 at the corner of Converse and Thorndike Streets in Depot Village from 8-Noon.
Bob Haveles 413-283-2553 x302

May 18

WARE

Summer Music
Janine's Frostee, 149 East Street;

5pm-8pm FREE

A nice mix of Country, Rock, Pop, Acoustic, and DJ Music, just to name a few. Call (413) 967-7950 or visit www.janinesfroste.com for more info. Weather permitting

May 19

WEST BROOKFIELD

Asparagus & Flower
Heritage Festival
Town Common 10am-4pm FREE

May 19

BRIMFIELD

Town-Wide Tag Sale
Maps will be for sale at Hitchcock Free Academy to bargain hunters for just \$2.
8am. **413-245-9977**

May 19

BELCHERTOWN

Annual Friends'
Community Tag Sale
Clap Memorial Library 8am-2pm

May 19

BELCHERTOWN

Team Jessica - Tag Sale
On the Common 8am-1pm

May 25

WEST BROOKFIELD

Murder Mystery Dinner
Theater
Salem Cross Inn 6:30PM; Show begins promptly at 7:00pm
Advance ticket sales only 508-867-2345;
www.salemcrossinn.com

May 25

WARE

Summer Music
Janine's Frostee, 149 East Street; FREE 5-8pm. A nice mix of Country, Rock, Pop, Acoustic, and DJ Music, just to name a few. Call (413) 967-7950 or visit www.janinesfroste.com for more info. Weather permitting

For community support...we'll be there.

At Country Bank, our home is your home. That's why we're so committed to supporting the communities we serve. It's what being a neighbor is all about.



Member FDIC
Member SIF

Country Bank

www.countrybank.com | 1-800-322-8233

May 30

NORTH BROOKFIELD 200TH ANNIVERSARY

A History of North Brookfield High School from 1857

Police Station Training Room, 7:00pm
www.northbrookfield.net

June 1

WARE

Summer Music

Janine's Frostee, 149 East Street; FREE 5-8pm. A nice mix of Country, Rock, Pop, Acoustic, and DJ Music, just to name a few. Call (413) 967-7950 or visit www.janinesfrostees.com for more info. Weather permitting

June 8

WARE

Summer Music

Janine's Frostee, 149 East Street; FREE 5-8pm. A nice mix of Country, Rock, Pop, Acoustic, and DJ Music, just to name a few. Call (413) 967-7950 or visit www.janinesfrostees.com for more info. Weather permitting

June 9

BELCHERTOWN

Teen Center Craft fair

In the Common 7am-4pm

June 13

MONSON

Monson Rotary Concerts

Dave Grieve Park 7PM
Jerome Riley (lead singer from the Platters)

June 15

WARE

Summer Music

Janine's Frostee, 149 East Street; FREE 5-8pm. A nice mix of Country, Rock, Pop, Acoustic, and DJ Music, just to name a few. Call (413) 967-7950 or visit www.janinesfrostees.com for more info. Weather permitting

June 16

Rain Date June 17

NORTH BROOKFIELD

200th Anniversary Family Day on the Common Games, Fun, Food, Music & Entertainment Town Common, Grove Street, 1:00pm - 10:00pm
www.northbrookfield.net

June 16

BELCHERTOWN

Alex Lemonade Stand

On the Common 9am-2pm

June 22

WEST BROOKFIELD

Murder Mystery

Dinner Theater

Salem Cross Inn 6:30PM- Show begins promptly at 7:00pm. Advance ticket sales only 508-867-2345;
www.salemcrossinn.com

June 22

WARE

Summer Music

Janine's Frostee, 149 East Street; FREE 5-8pm. A nice mix of Country, Rock, Pop, Acoustic, and DJ Music, just to name a few. Call (413) 967-7950 or visit www.janinesfrostees.com for more info. Weather permitting

June 23

WARE

Ware Town-Wide Tag sale

8:30 to 4pm. Treasure hunting at its finest! Free maps listing locations of the sales are available at the Ware Center Meeting House on Route 9. For info call **413-967-8304**

June 23

Rain Date June 24

MONSON

Fireworks

Quarry Hill School on Margaret Street
www.monsonsummerfestinc.com

June 23

WEST BROOKFIELD

Flea Market on the Common

8:30am - 2:30pm. Call Terry **508-867-4462**

June 27

WEST BROOKFIELD

Concerts on the Common

Draw the Line: Aerosmith tribute; FREE 7-9pm

June 30

WARE

Ware Lions Fireworks

Grenville Park Music, Food, and Fun!!
<http://warema.lionwap.org>

June 29

WARE

Summer Music

Janine's Frostee, 149 East Street; FREE 5-8pm. A nice mix of Country, Rock, Pop, Acoustic, and DJ Music, just to name a few. Call (413) 967-7950 or visit www.janinesfrostees.com for more info. Weather permitting

June 30

Rain date: Saturday July 14

SPENCER

Family Fun Day & Fireworks at the Spencer Fairgrounds.

Gates open at Noon. Admission and parking are free. Donations greatly appreciated and will go into our Celebrations fund to help support family events throughout the year.

July 1

MONSON

Ice Cream Social

Keep Homestead Museum, 35 Ely Road
FREE 1-3:30pm

www.keephomesteadmuseum.org

July 3 (4)

WEST BROOKFIELD

Concerts on the Common

The Dynamite Disco Review; FREE 6-9pm

July 4

MONSON

Summerfest

Main Street. Parade 10am. Several bands will be performing all day. Beer Garden at Dave Grieve Park, 80 plus vendors. Soap box derby, parachute event, frog jumping contest etc.

www.monsonsummerfestinc.com

July 6

EAST BROOKFIELD

Independence Day Celebration

Talent Show, Amusement Rides, Raffle
Tickets 6-10pm

July 6

WARE

Summer Music

Janine's Frostee, 149 East Street; FREE 5-8pm. A nice mix of Country, Rock, Pop, Acoustic, and DJ Music, just to name a few. Call **(413) 967-7950** or visit www.janinesfrostees.com for more info. Weather permitting

July 6

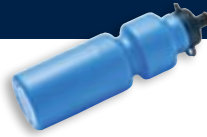
BROOKFIELD

Concerts on Common

Dave Pike and the good ole boys; FREE 6:30pm-9pm. Baking Contest and Variety ½ hour and local vendors



Your Bank for Life.



For more than 125 years we've been helping our neighbors achieve their goals.



SPENCER SAVINGS BANK
—Your Bank For Life.—

800.547.2885 • spencersavingsbank.com

July 7

Rain Date: July 8

EAST BROOKFIELD

8:30 – 10:30am Pancake Breakfast – East Brookfield Baptist Church
11:30am Wheels Parade for children (bikes, scooters, carriages)
12:00pm Parade – along Main Street,
1:30pm Firemen's Muster
1:30 – 2:30 Talent Show Winners – in the Gazebo
3:30 Softball game – E.B. Baptist Church vs. Town Officials. 3:30-5:30 Michael Glaser – Interactive presentation of sea creatures. 4:30-6:30 Chuck & Mud – in the Gazebo. 7:00-9:00 Bad Tickers – in the Gazebo. Ongoing from 1:00pm – Amusement rides, dunk tank, crafters, food booths, face painting, prize raffles, Art Guild Open House, Quaboag Valley Railroad Association Open House, & more. 9:30 East Brookfield's Spectacular Fireworks. Most events are at Connie Mack Field in the center of East Brookfield. For more information call: **508-867-6769 x314** or email to friendsforthecommunity@yahoo.com

July 7

BRIMFIELD

Farmers' Market Festival
Hitchcock Free Academy's parking lot 9am – 2pm. Stop by for this special Farmers' Market Festival and meet area

farmers with locally-grown plants and produce, and artisans selling their unique home-made products. Enjoy live music, see amazing dog training demonstrations, meet local authors, and be ahead of the curve for your holiday shopping. There's no place like the Farmers' Market for a great sense of community.
Call (413) 245-9977 or visit www.hitchcockacademy.org.

July 7

WEST BROOKFIELD

The Quaboag Plantation Triathlon

Go to **Active.com** for more information. Participants may register at this address or by writing to QPTC at Box 258, West Brookfield 01585.

July 10-15

BRIMFIELD

Brimfield Antique Shows

Rain or Shine! **QHMA.com** or **Brimfield.com**

July 11

WEST BROOKFIELD

Concerts on the Common

Jimmy Maz; FREE 7-9pm



July 13

WARE

Summer Music

Janine's Frostee, 149 East Street; FREE 5-8pm. A nice mix of Country, Rock, Pop, Acoustic, and DJ Music, just to name a few. Call **(413) 967-7950** or visit www.janinesfrostee.com for more info. Weather permitting

July 13

BROOKFIELD

Concerts on Common

FREE 6:30pm- 9pm. Baking Contest and Variety ½ hour and local vendors

July 14

NORTH BROOKFIELD

200th Anniversary Concert

Concert on the First Congregational Church Common 1:00pm – 5:00pm
www.northbrookfield.net

July 15

BELCHERTOWN

The Belchertown Cruisers Car Show On the Common 8am-4pm

July 17

BRIMFIELD

Concerts on the Common

Radio Ranch – A hometown favorite returns once again. This is Country Music at its finest, with acoustic & bass guitars, drums as well as terrific harmonies. These tunes will get your feet tapping! Thanks to the Brimfield Cultural Council! In case of rain, concerts will be held at Hitchcock FREE 6:30-8pm

July 17

MONSON

Monson Rotary Concerts

Dixieland Stomp. Dave Grieve Park FREE 7pm

July 18

WEST BROOKFIELD

Concerts on the Common

The Stable Hands: Bluegrass - FREE 7-9pm

July 20

WARE

Summer Music

Janine's Frostee, 149 East Street; FREE 5-8pm. A nice mix of Country, Rock, Pop, Acoustic, and DJ Music, just to name a few. Call **(413) 967-7950** or visit www.janinesfrostee.com for more info. Weather permitting

July 20

BROOKFIELD

Concerts on Common

Baking Contest and Variety ½ hour and local vendors - FREE 6:30pm- 9pm

July 22

Rain date July 29 @6:30

WARE

The Heritage Pops Orchestra Concert

Historic Meeting House Route 9 - FREE 6:30pm. Bring a chair or blanket and enjoy the sounds of the big band era.

July 24

BRIMFIELD

Concerts on the Common

Fiske & Herrera – original folk music with beautifully blended vocals and a soft acoustic sound. In case of rain, concerts will be held at Hitchcock. FREE 6:30-8pm

July 25

WEST BROOKFIELD

Concerts on the Common

The Eddie Forman Orchestra: Polka FREE 7-9pm

July 26th August 2, 9 & 16

BELCHERTOWN

The Community Band Concerts

On the Common FREE 6-9pm

July 27

WEST BROOKFIELD

Murder Mystery Dinner

Theater Salem Cross Inn 6:30pm -

Show begins promptly 7:00pm

Advance ticket sales only

508-867-2345;

www.salemcrossinn.com

July 27

WARE

Summer Music

Janine's Frostee, 149 East Street; FREE 5-8pm. A nice mix of Country, Rock, Pop, Acoustic, and DJ Music, just to name a few. Call **(413) 967-7950** or visit www.janinesfrostee.com for more info. Weather permitting

July 27

BROOKFIELD

Concerts on Common

Baking Contest and Variety ½ hour and local vendors; FREE 6:30pm- 9pm

July 28

WARE

2012 Annual Car Show

Janine's Frostee, 149 East Street.

For more Information visit

www.janinesfrostee.com/events; or call **(413) 967-7950**

July 31

BRIMFIELD

Concerts on the Common

Flamingo Swing Band – Swing anyone?

A 14 piece all female band will bring you back into "the swing 'o things" with the sound of big band music of the 30's & 40's. Dancers are welcome! Sponsored by Country Bank for Savings - FREE 6:30-8pm. In case of rain, concerts will be held at Hitchcock

August 1

WEST BROOKFIELD

Concerts on the Common

Blind Tiger Swing Posse: Swing - FREE 7-9pm

August 3

WARE

Summer Music

Janine's Frostee, 149 East Street; FREE 5-8pm. A nice mix of Country, Rock, Pop, Acoustic, and DJ Music, just to name a few. Call **(413) 967-7950** or visit www.janinesfrostee.com for more info. Weather permitting

August 5

WARE

A Trio of Women Concert

Historic Meeting House Route 9, FREE 6:30pm. Outside on the grounds. Bring a blanket or chair and enjoy the sounds of the 50's and 60s with an all women ensemble.

August 5

MONSON

Concert on the Lawn

Keep Homestead Museum, 35 Ely Road FREE 1:30pm. Dick Chase & Friends
www.keephomesteadmuseum.org

August 8

WEST BROOKFIELD

Concerts on the Common

Charlie Lask & The Central MA All Stars w/special guests Sonny & Cher! FREE 7-9pm

August 10

WARE

Summer Music

Janine's Frostee, 149 East Street; FREE 5-8pm. A nice mix of Country, Rock, Pop, Acoustic, and DJ Music, just to name a few. Call (413) 967-7950 or visit www.janinesfrosteecom.com for more info. Weather permitting

August 11-18

WALES

250th Anniversary - Week-long Celebration

August 12

WARE

Jazzbones Concert

Historic Meeting House Route 9, 6:30pm FREE. Bring a chair or blanket and enjoy the unique jazz sound of this ensemble

August 15

WEST BROOKFIELD

Concerts on the Common

FREE 7-9pm. Cool Hand Blues Band

August 17

WEST BROOKFIELD

Murder Mystery Dinner Theater.

Salem Cross Inn 6:30pm - Show begins promptly 7:00pm Advance ticket sales only **508-867-2345**
www.salemcrossinn.com

August 17

WARE

Summer Music

Janine's Frostee, 149 East Street; FREE 5-8pm. A nice mix of Country, Rock, Pop, Acoustic, and DJ Music, just to name a few. Call (413) 967-7950 or visit www.janinesfrosteecom.com for more info. Weather permitting

August 18

NORTH BROOKFIELD

200th Anniversary Town Parade.

11:00 AM Honor Guard, Floats, Town Resident's Antique Cars, Local Business Participation ... and much more. Olde Home Day 1:00pm - 5:00 PM Reunion Time - Food, FUN, Music, Historical Presentations, Old Photos, Art Display, Historical Tours, Old Fashioned Games for Children & Adults, Home-made Pie ... www.northbrookfield.net

August 17 & 18

HARDWICK

Hardwick Community Fair

On the Common - The Oldest Fair in the United States www.hardwickfair.com

August 21

MONSON

Dan Kane Singers

This concert concludes the Monson Rotary annual summer concert series and will honor and recognize the thousands of citizen volunteers who have and continue to provide relief to our Monson residents who experienced losses during the Tornado of 2011. This concert salutes the many volunteers that have helped in the recovery of our town.

August 24

WARE

Summer Music

Janine's Frostee, 149 East Street; FREE 5-8pm. A nice mix of Country, Rock, Pop, Acoustic, and DJ Music, just to name a few. Call (413) 967-7950 or visit www.janinesfrosteecom.com for more info. Weather permitting

August 25

PALMER

Nostalgia Day

A fun day for the whole family with food, music, rides, booths and fun. Beer garden. Legion Field, Behind Converse Middle School; 11am - 7pm

August 25

BELCHERTOWN

Saint Francis Church Tag Sale

On the Common 8am-2pm

August 31

WARE

Summer Music

Janine's Frostee, 149 East Street; FREE 5-8pm. A nice mix of Country, Rock, Pop, Acoustic, and DJ Music, just to name a few. Call (413) 967-7950 or visit www.janinesfrosteecom.com for more info. Weather permitting

September 2

MONSON

Button program with Jacquie Hatton, the KHM Button Lady. Keep Homestead Museum, 35 Ely Road. FREE 1:30pm
www.keephomesteadmuseum.org

September 2-5

SPENCER

Spencer Fair

Family Fun at Central Massachusetts' Largest Fair on the Spencer Fairgrounds 123rd Annual Fair - Labor Day Weekend
www.spencerfair.org

September 1

PALMER

Annual Car Show

Alvin Rondeau's Dairy Bar, Ware Rd 10am-4pm. Call for more information
413-284-0068

September 1

MONSON

Town Wide Tag Sale

Contact person Joan Simmons
413-596-6966 (call after 5PM) with any questions.

September 4-9

BRIMFIELD

Brimfield Antique Shows

Rain or Shine!
QHMA.com or Brimfield.com

September 9

GILBERTVILLE

100th Anniversary of the

Gilbertville Public Library
Open house at the library, 259 Main St. will take place from 11am-4pm. There will be a bake sale, a book sale and a historic photo display. The Band of Voices will be performing in the library at 2pm. Food and drinks will be available.

September 14 & 15

EAST BROOKFIELD

Connie Mack 150th birthday celebration On the 14th East Brookfield Elementary School 7-9 History of Connie Mack On the 15th 9am-5pm Town Complex, Connie Mack Dr. An old time country fair with music, rides, old fashioned games, tethered balloon rides, exhibition baseball game, antique auto and tractor shows, Connie Mack history and much more!
www.eastbrookfieldma.us

September 15

NEW BRAINTREE

Country Fair
www.newbraintree.org

September 15

WARE

Annual Fair and Flea Market Ware Center Meeting House Route 9 - 8:30am to 4pm. Browse the flea market tables for treasures, take a tour of the museum, sample the homemade pie or make a bid on a silent auction item! All proceeds benefit the restoration of this national historic treasure! Free parking.

September 21

WEST BROOKFIELD

Murder Mystery Dinner Theater Salem Cross Inn 6:30PM; Show begins promptly at 7:00pm. Advance ticket sales only **508-867-2345**; www.salemcrossinn.com

September 21

BELCHERTOWN

155th Belchertown Fair & Parade 4pm -10pm
Saturday, September 22nd Parade at 10am - Midway 12 noon until 10pm
Sunday, September 23rd Noon until 6pm
<http://belchertownfair.com>

September 22-23

NORTH BROOKFIELD

200th Anniversary North Brookfield Sat/Sun 10:00-5:00pm. Brookfield Orchards Pick-Your-Own Day
www.northbrookfield.net

October 6

Rain date: Saturday, October 13
BRIMFIELD

Fourth Annual Brimfield Antique Auto Show

Heart-O-the-Mart Antique Show Grounds, 37 Palmer Rd Rt. 20. Antique cars, muscle cars, classic trucks, street rods, custom cruisers, and classic imports and motorcycles are all welcome; over 25 categories, 75 trophies, and 3 best-in-show. Meet Steve Magnante of Barrett-Jackson. There will be music, food, and entertainment at this special event benefiting Hitchcock Free Academy. 10am – 4pm. Contact Information: Auto exhibitors: **413-544-1644**; general info **413-245-9977**.

October 6

BROOKFIELD

34th Annual Apple Country Fair

Town Common 10am-4pm
The Fair also will feature live music, children's games, baked goods, raffles and an apple pie contest — all to benefit the Brookfield Community Club. The fair is held rain or shine. Should storms threaten, the fair will set up inside Brookfield Elementary School, 37 Central St.
www.applecountryfair.com

October 13 & 14

2012 Backroads Studio Tour

10am to 5pm - For more information visit
www.backroadsstudiotour.com

October 19

WEST BROOKFIELD

Murder Mystery Dinner Theater Salem Cross Inn 6:30pm - Show begins promptly at 7:00pm. Advance ticket sales only **508-867-2345**;
www.salemcrossinn.com

October 29

Rain Date 30

WARREN

On the Common 6 - 8pm
Enjoy horse drawn hay rides, face painting, games and refreshments. Prizes awarded in four different categories for those who enter their carved pumpkins. We also provide train rides with the Spencer Savings Bank Safari Train.

November 4

WEST BROOKFIELD

Handcrafts & Collectables Craft Show Salem Cross Inn 10am - 3pm Indoor Exhibits. Admission \$4.00 Children under 10 Free. Raffle to Benefit a Local Charity!
508-867-2345 or
www.salemcrossinn.com

November 16

WEST BROOKFIELD

Murder Mystery Dinner Theater

Salem Cross Inn 6:30PM; Show begins promptly at 7:00pm. Advance ticket sales only **508-867-2345**;
www.salemcrossinn.com

December 2

WEST BROOKFIELD

White Christmas & Tree Lighting

Town Common
Craft Fairs, Open House for shops Noon-5pm FREE hayrides 2-5pm on the common. Tree lighting 5:45pm 6:15 Concert at Town Hall

December 2

BRIMFIELD

Artist Open Studio Trail

10am - 4pm, FREE admission
Visit www.hitchcockacademy.org in November to find out where Hitchcock Free Academy is located on the Artist Open Studio Trail. Each December discover talented, local fine artists who will have their works for display and sale. Many area artists set up tables with their works at Hitchcock (Sunday only), and many others open their own studios for the trail both Saturday and Sunday. Fine artists welcome! Contact HFA for information on table space or other details as December approaches:
(413) 245-9977 or visit our website.

Bed & Breakfast

BRIMFIELD

YANKEE CRICKET BED & BREAKFAST

106 Five Bridge Road
Brimfield, MA 01010

(413) 245-0030 Fax (413) 245-0098

www.yankeecricket.com

Email: wsimonic@charter.net

A reproduction colonial offering a quiet stay close to Brimfield, Sturbridge and the Brookfields.

Campgrounds

MONSON

SUNSETVIEW FARM CAMPING AREA

57 Town Farm Road, Monson, MA 01057

(413) 267-9269 Fax (413) 267-3163

www.sunsetview.com

Email: camp@sunsetview.com

RV's, trailers and tents can be accommodated on grass or wooded sites with hookups. Pool, recreation hall, ball fields and modern bathrooms.



OAKHAM

PINE ACRES FAMILY CAMPING RESORT

203 Bechan Road, Oakham, MA

(508) 882-9509

www.pineacresresort.com

Pine Acres is located on the shores of sparkling Lake Dean. Make your family vacation experience memorable at our five star rated camping resort. Site choices range from rustic tenting to big rig sites with full amenities. Rental options include rustic or premium cabins (some pet friendly) and RV rentals. Enjoy time boating, swimming, and fishing on the lake or relax at the pool and spa while the kids play in the splash pad.

Hotels, Motels & Inns

BRIMFIELD

NEW ENGLAND MOTEL & ANTIQUE MARKET

30 Palmer Road, Brimfield, MA 01010

(413) 245-3348 Fax (508) 345-3784

www.antiques-brimfield.com

Email: nemotelbrimfield@charter.net

Antiques and collectibles shows. Food court and on-site parking. ATM and camping sites available.

LULOW

COMFORT INN & SUITES

321 Center Street, Ludlow, MA 01056

(413) 589-9300 Fax (413) 547-0488

www.pvhg.com • Email: cmfoster@pvhg.com

The Comfort Inn & Suites Ludlow Hotel provides 71 guest rooms and can accommodate up to 30 people in our over 500 square foot conference room for your meeting or reception.

PALMER

WEDGEWOOD MOTEL

1430 Park Street, Route 20

Palmer, MA 01069

(413) 283-4501 Fax (413) 283-2214

www.wedgewoodmotel.rylatechnologies.com

Exit 8 off Mass Pike, 1.5 miles east of Palmer. efficiency and family units, cable T.V., weekly rates, AC, central heating, individual control.

SOUTHBRIDGE

SOUTHBRIDGE HOTEL & CONFERENCE CENTER

14 Mechanic St., Southbridge, MA 01550

(508) 765-8000 Fax (508)765-7600

www.southbridgehotel.com

STURBRIDGE

PUBLIC HOUSE

On the Common, 277 Main Street - Route 131, Sturbridge, Massachusetts 01566-0187

(508) 347-3313 • 800-PUBLIC

www.publichouse.com

Built in 1771, the Public House Historic Inn maintains its 18th century ambiance while providing 21st century comforts. Our 17 guest rooms and gracious suites in this historical setting all have private baths, air conditioning, and are decorated with period antiques. For the vacationing family to the corporate retreat, from the bridal party to the romantic getaway our accommodations will surpass your expectations.

STURBRIDGE COUNTRY INN

530 Main Street
 Sturbridge, MA 01566
(508) 347-5503
 www.sturbridgecountryinn.com
 Email: info@sturbridgecountryinn.com
 16 Historic Rooms & Suites with fireplace and Jacuzzi baths.

STURBRIDGE HOST HOTEL

366 Main Street
 Sturbridge, MA
(508) 347-7393
 www.sturbridgehosthotel.com
 Specializing in: Weddings ~ Proms ~ Showers
 Company Outings & Holiday Parties
 Tradeshows, Meetings & Conferences

WEST BROOKFIELD

COPPER LANTERN MOTOR LODGE

184 West Main Street, P.O. Box 1138
 West Brookfield, MA 01585
(508) 867-6441
 www.CopperLanternMotorLodge.com
 Free WI-FI. All rooms non-smoking and have microwaves & refrigerators. Efficiency units also have kitchenettes. Free local calls. Well-behaved dogs welcome. Cable T.V. A/C. Nightly & weekly rates. Located on 7 acres of grounds along the Quaboag River. Near Salem Cross Inn.

**COPPER LANTERN
 MOTOR LODGE**

FREE WI-FI
 All Rooms Non-Smoking
 Nightly & Weekly Rates

RESERVATIONS (508) 867-6441
www.CopperLanternMotorLodge.com

184 W. Main St. (Route 9)
 West Brookfield, MA 01585

Visa, AMEX, MasterCard, Discover
Your Hosts The Leland Family Since 1963

Experience Five-Star Lakefront Camping



Awarded National RV Park of the Year 2010-2011



203 Bechan Road • Oakham, MA
(508) 882-9509
PineAcresResort.com

THE CULTURAL CENTER AT EAGLE HILL

A place to connect with the arts and with each other in Central Massachusetts.
 Tickets and info: www.thecenterateaglehill.org



J & J PROMOTIONS 2012 ANTIQUE & COLLECTIBLES SHOWS

May 11-12
July 13-14
Sept. 7-8

NOTE NEW SHOW HOURS

Friday: 8 a.m. – 4 p.m. • \$5 admission
Saturday: 9 a.m. – 4 p.m. • Free admission
On-site parking \$7 • No Pets Please • Rain or Shine
A Reed Family Tradition for 50 Years



J & J Promotions
P.O. Box 385 - Route 20 • Brimfield, Mass 01010-0385
(413) 245-3436 • (978) 597-8155
E-mail: jnjbrimfld@meganet.net
Website: www.jandj-brimfield.com

BRIMFIELD

BRIMFIELD ACRES NORTH

Route 20, Brimfield, MA 01010
(413) 245-9471 or (413) 427-0311
Fax (508) 754-4185
www.brimfieldacresnorth.com
Email: brimfield1@aol.com

Visit our Postcard & Ephemera Center. For information on one of our shows or group shop, please call 1-508-754-4185.

BRIMFIELD.COM

106 Five Bridge Road
Brimfield, MA 01010
(413) 245-0030
www.brimfield.com
Email: wsimonic@charter.net

J&J PROMOTIONS

P.O. Box 385, Route 20
Brimfield, MA 01010
(413) 245-3436 or (978) 597-8155
www.jandj-brimfield.com

Antiques and collectibles shows. Brimfield's largest!
On-site parking \$7.

HERTAN'S ANTIQUE SHOWS

Mill Lane Road, Brimfield, MA 01010
(860) 763-3760 or
(413) 626-0927 (during shows)
www.hertansbrimfield.com

Shop over 200 booths in our park-like setting;
free admission, no pre-selling, outdoor cafe.

MAY'S ANTIQUE MARKET, INC.

10 Palmer Road, P.O. Box 416
Brimfield, MA 01010
(413) 245-9271 Fax (413) 245-9509
www.maysbrimfield.com

THE MEADOWS ANTIQUE SHOWS

P.O. Box 374, Brimfield, MA 01010
(413) 245-9427 or (413) 245-3215
Fax (413) 736-0362
www.brimfieldantiqueshow.com
Email: pni@earthlink.net

NEW ENGLAND MOTEL & ANTIQUE MARKET

30 Palmer Road, Brimfield, MA 01010
(508) 347-2179 or (413) 245-3348
Fax (508) 347-3784
www.antiques-brimfield.com
Email: nemotelbrimfield@charter.net
400 dealers, 3 buildings, Food Court, Public Parking,
ATM, Shipping.

WEST BROOKFIELD

MILLER ANTIQUES ON THE COMMON

15 School Street
West Brookfield, MA 01585
(508) 867-2679
Open by Appointment or Chance – Antiques and Architectural
Materials, Entire Dismantled Houses & Barns. Restoration
Services Available.

NORTH BROOKFIELD

FINDERS KEEPERS ANTIQUES

228 Main St, (Rts. 67 & 148)
North Brookfield, MA
(508) 867-0115
www.FindersKeepersAntiques.net
Specializing in glassware and china, crockery
and pottery, Corning, Corelle, Pyrex and Fire-King.

SHOP BRIMFIELD'S
 WORLD FAMOUS OUTDOOR
 ANTIQUE & COLLECTIBLE SHOWS
 2012
 at **NEW ENGLAND MOTEL**

THE SHOPPING STARTS HERE!
 Furniture • Jewelry • Art • Silver • Porcelain • Lighting
 Shabby Chic • Prints • Majolica • Vintage Clothing
 Accessories • Pottery • Outdoor Decor • Tile • Primitives

OVER 400 DEALERS - 3 DEALER PAVILIONS

OPENS WED. 6 AM

MAY 9-13 WED.-SUN.
 JULY 11-15 WED.-SUN.
 SEPT. 5-9 WED.-SUN.

ADMISSION OPENING DAY ONLY \$5. PARKING CENTRAL TO ALL FIELDS \$5 • SHIPPING • ATM

Bring Your Appetite!
 LOOK FOR OUR GREEN AND GOLD UMBRELLAS AT OUR FOOD COURT
 AND YOU WILL FIND OUR FIELD IN THE CENTER OF THE MARKET.

WWW.ANTIQUES-BRIMFIELD.COM
NEMOTELBRIMFIELD@GMAIL.COM

BSPA

Marie Doldoorian Tel. 508-347-2179 Campsites by Reservation

BRIMFIELD
 MAY'S ANTIQUE MARKET

2012 Show Dates
 May 10-12 • July 12-14 • Sept. 6-8

Opening Thursday 9AM
 Rain or Shine • Admission \$5⁰⁰

PSMA
 Professional Show Managers' Association, Inc.

MAY'S ANTIQUE MARKET, INC.
 Route 20, P.O. Box 416, Brimfield, MA 01010
 www.maysbrimfield.com
 413-245-9271 • Fax: 413-245-9509
 One of Brimfield's Best and Biggest Antique Shows
 Junco Mgmt. Services, Inc.

BRIMFIELD
 THE
MEADOWS

2012 Show Dates
 May 8-13 • July 10-15 • September 4-9

Visit Us On-line at
www.brimfieldantiqueshow.com

Opens Tuesday 6 a.m.

Over 200 Dealers in Antiques and Collectibles
 Only

Central Parking • Concession Stand On-site
 No Pets Please • Rain or Shine

The Meadows Antique Shows, Inc.
 Phone (413) 245-9427 or (413) 245-3215
 P.O. Box 374 • Brimfield • MA • 01010
 Fax (413) 736-0362 email: pni@earthlink.net

BRIMFIELD ACRES
 ★ NORTH ★
HOPPE-HOPPE

Brimfield, Mass.

2012 - ONE DAY SHOWS

May 8th
 Tuesday 1 PM - 5 PM

July 10th
 Tuesday 1 PM - 5 PM

September 4th
 Tuesday 1 PM - 5 PM

Admission \$5 • RAIN OR SHINE
 Antique Shop
 Open October through April
 Brimfield Acres North, Inc.
 413-245-9471 or 413-427-0311
 fax (508) 754-4185
 email: brimfield1@aol.com

PSMA

show schedule

2012 BRIMFIELD SHOW DATES • TUESDAY THRU SUNDAY

May 8-13 • July 10-15 • Sept 4-9

open ■ closed □

OPERATOR	OPEN TIME	T	W	TH	F	S	SU
Brimfield Acres NorthTues. 1 p.m. (413) 245-9471 or (413) 427-0311		■	□	□	□	□	□
Central Park Antique Shows 6 a.m. (413) 245-4674 (during shows) or (413) 596-9257		■	■	■	■	■	■
Faxon's Midway 6 a.m. (508) 347-3929		■	■	■	■	■	■
Heart-o-the-Mart 9 a.m. (413) 245-9556		□	■	■	■	■	■
J&J Promotions Fri. 8 a.m./Sat. 9 a.m. (413) 245-3436 or (978) 597-8155		□	□	□	■	■	□
Hertan's Antique Shows Wed. noon/Th. Sun. 6 a.m. (413) 626-0927 (during shows) or (860) 763-3760		□	■	■	■	■	■
May's Antique Market 9 a.m. (413) 245-9271		□	□	■	■	■	□
New England Motel & Antique Market 6 a.m. (413) 245-3348		□	■	■	■	■	■
Quaker Acresdaybreak (413) 245-6185		■	■	■	■	■	■
Shelton Antique Showsdaybreak (413) 245-3591		■	■	■	■	■	■
The Meadows Antique Shows, Inc. 6 a.m. (413) 245-9427 or (413) 245-3215		■	■	■	■	■	■

2013 show dates May 14-19 • July 9-14 • Sept 3-8



	Town Hall/Police Station
	Fire Department/Ambulance
	Post Office
	Parking
	Public Telephone
	Churches
	ATM
	Shipper
	Restrooms & Handicapped
	Camping
	Food



↑ To Monson and Palmer
MassPike
Route 90 Exit 8



Brimfield Acres North [P] [Hand icon] [Wheelchair icon]

[P] Dealer's Choice

Grand Trunk

Collins Apple Barn

Prospect Hill Road

Brimfield Barn

Stephen's Place

[Hand icon] [Wheelchair icon] [P] Heart-O-The-Mart

[Truck icon] [Hand icon] [Wheelchair icon] Brimfield Antique Center

The Meadows Antique Shows [P] [Hand icon] [Wheelchair icon]

[Hand icon] [Wheelchair icon] [P] Central Park Antique Shows

[Hand icon] [Wheelchair icon] [P] Herten Antique Shows

New England Motel & Antique Market [P] [Dollars icon] [Truck icon] [Wheelchair icon]

Quaker Acres [P] [Hand icon] [Wheelchair icon] [Dollars icon] [Truck icon] [Wheelchair icon]

May's Antique Market [P] [Hand icon] [Wheelchair icon]

Mill Lane

[Hand icon] [Wheelchair icon] [P] J&J's [Dollars icon]

Crystal Brook

Shelton Antique Shows [P] [Hand icon] [Wheelchair icon]

Sturtevant's South

Sturtevant's North

Mahogany Ridge

Mill Lane

Common

Warren Road [19]



Wales Road

← To Wales

→ To Warren,
West Brookfield and Ware
Route 67

[P]

+

← To Holland
and Route 84

↓ To Sturbridge, Charlton/Charlton City,
Auburn and Routes 90 & 84



→ To Brookfield
Route 9

Purge Hill Road

Holland Road

East Hill Road

Brookfield Road

directions & show information

DIRECTIONS TO BRIMFIELD

From North: Travel south on 1-91 to Mass Pike Entrance. Take the Mass Pike East to Exit 8 (Palmer). Turn right after the toll booth and left at the first light onto Route 20 East. Continue east about 8 miles to the shows.

From South: Travel north on 1-91, to 291 East, to Mass Pike entrance (Exit 6). Take the Mass Pike East to Exit 8 (Palmer). Turn right after the toll booth and left at the first light onto Route 20 East. Continue east about 8 miles to the shows. Or you may consider 1-84 to Sturbridge, then Route 20 West (about 7 miles) to Brimfield.

From East and North: Take 495 south to the Mass Pike. Take the Mass Pike west to Exit 9 (Sturbridge). Turn right after the toll booth onto Route 20 West. Continue west about 7 miles to the shows.

To avoid traffic tie-ups at Mass Pike exits 8 and 9, you may exit sooner and take Route 19 or Route 32 from southerly directions, or consider Routes 32 or 67 from the north.

Tour Bus Accommodations: Tour bus parking is available at several locations within the one-mile stretch of Route 20 where the shows are located.



Hertan's Antique Shows

Free Admission - No Pre-selling

Over 150 Outstanding
Dealers

Open Wednesday Noon to Sunset
Also open Thursday to Sunday
From Sunrise to Sunset

David Lamberto
Owner-Operator
860-763-3760
413-626-0927



www.hertansbrimfield.com

SHOW INFORMATION

The Brimfield shows run three times a year – May, July and Sept. and are open for a six day period, Tuesday through Sunday. Some operators open all days and others are open for a few days during this period.

Admission: Some shows charge admission, the fee is around \$5.

Parking: There is plenty of off street parking available at costs ranging from \$3.00 – \$10.00. Parking is prohibited on the roadside and tow trucks do patrol the area, so park with caution.

Food: There are plenty of food vendors located on all of the fields offering a variety of food items. There are also a few local restaurants in town where you can sit and enjoy dining.

Restrooms: Portable toilets are set up on all fields.

Weather: The weather in New England is very unpredictable. The shows run rain or shine so come prepared.

Cash: The Country Bank has an ATM in Brimfield which is located on Main Street. There are also several others located about 10 miles away, in the towns of Sturbridge, Monson, Palmer and Warren. Also, several of the field operators have ATMs located on their property.

Pets: It's not a good idea to bring pets. Many operators prohibit pets on their fields and it's hazardous to keep animals in cars.

Laundromat: Located in downtown Warren and Ware.

Lost & Found: Contact the Brimfield Police Station (413) 245-3442 after shows.

Emergencies: call 911

Looking for a GPS address to Brimfield use:
Brimfield Town Hall, 23 Main Street
Brimfield, MA 01010

The location is approximately 1000 feet from the beginning of the Brimfield Antique Shows.



LINK
WITH
US

(413)
245-0030

Standing Behind You!



Peace of mind is knowing that when it comes to your family's health, a team of professionals will always be standing behind you every step of the way.

That's Wing Memorial – a community Hospital and five Medical Centers dedicated to providing the highest standards of care in a friendly comfortable environment close to home.

And, as Wing stands behind your family, standing behind us are the resources of UMass Memorial Health Care—a world class teaching hospital and health network providing the widest range of specialized care available.

In Your Community, For a Lifetime of Care

Belchertown, Ludlow, Monson, Palmer, Wilbraham, Wing VNA & Hospice,
Griswold Behavioral Health Center

413-283-7651



Wing Memorial

Hospital and Medical Centers

A Member of UMass Memorial Health Care



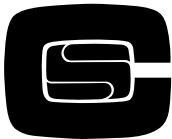
www.winghealth.org

Looking for a bank that will get to know you personally?

**Come see us
today!
Our team is
ready to
assist you!**

Susan Barbiasz,
Ware Manager,
pictured with John
Downs, Deb Ruetz,
and Hank Downey

*We Speak
Your
Language*

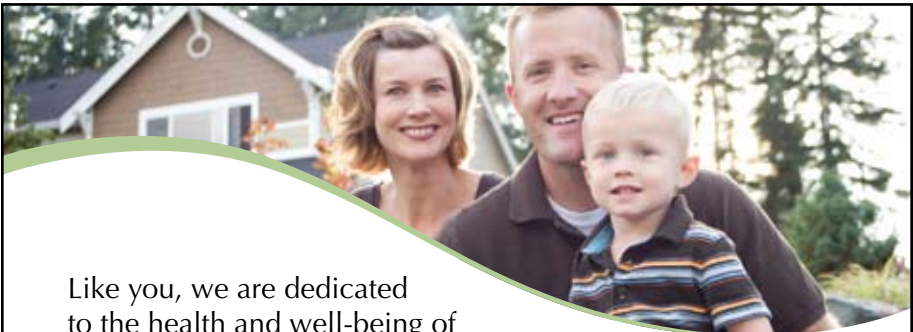


CHICOPEE SAVINGS

413-594-6692

Member FDIC  Member DIF

Chicopee • Ludlow • So. Hadley • W. Springfield • Ware
www.chicopeesavings.com



Like you, we are dedicated to the health and well-being of our friends and neighbors, which is why Baystate Mary Lane Hospital has a long history of providing you and your family with quality health care, close to home.

For a list of providers accepting new patients, please call 413-967-2488.

Baystate  Mary Lane Hospital

baystatehealth.org/bmlh

BELCHERTOWN**TOWN HALL**

2 Jabish Street
Belchertown, MA 01007
(413) 323-0400
www.belchertown.org

MILL VALLEY SNOWMOBILE CLUB

www.millvalleysnowmobile.org

THE STONE HOUSE MUSEUM AND BELCHERTOWN HISTORICAL ASSOC.

20 Maple Street, P.O. Box 1211
Belchertown, MA 01007
(413) 323-6573
www.stonehousemuseum.org
The Belchertown Historical Association has an archive in the Stone House Museum that has over one hundred boxes of historical documents and records that give a chronological history of Belchertown from its beginning in the early 1700's up to the present day. The gathering in of these materials started from the day the Association was formed in 1903.

QUABBIN RESERVOIR VISITOR CENTER

485 Ware Road (Route 9)
Belchertown, MA 0107
(413) 323-7221
www.mass.gov/dcr/parks/central/quabbin.htm

BRIMFIELD**TOWN HALL**

23 Main Street
Brimfield, MA 01010
(413) 245-4100
www.brimfieldma.org

Built in 1878, Stick Style, with clapboard, shingle and mock half-timbering on exterior, with roof, cupola and corner tower. On the common are monuments commemorating Civil War and World War I veterans. Stop and read the two markers denoting the Steerage Rock, an Indian stronghold in the 1600s.

BRIMFIELD STATE FOREST

Dean Pond Road
Brimfield, MA 01010
(413) 267-9687
This rolling, heavily forested property has over 20 miles of roads and trails and is used primarily for hiking, walking, horseback riding and fishing. Dean Pond Recreation Area, located in the western portion of Brimfield State Forest, has a pavilion, comfort station, 100 linear feet of beach and picnic facilities. The roads are popular for equestrian use and related special events.

CONGREGATIONAL MEETING HOUSE

(508) 245-7162

Built in 1848, a Greek Revival building with a three-bay recessed entry and Doric columns. Services Sunday mornings.

HITCHCOCK ACADEMY COMMUNITY CENTER

2 Brookfield Road, Brimfield, MA 01010-0155
(413) 245-9977

www.hitchcockacademy.org

Greek Revival/Italianate style. Established in 1855 to provide free high school education to Brimfield youth. Now a community center.

BROOKFIELD**1675 KING PHILIP'S WAR MEMORIAL**

A state marker on Route 9, at the boundary of Brookfield and West Brookfield tells the grim story of Brookfield's early years.
www.westbrookfield.org

BROOKFIELD TOWN HALL

6 Central Street, Brookfield, MA 01506
(508) 867-2930
www.brookfieldma.us

THE ELM HILL CENTER

26 East Main Street
Brookfield, MA 01506
(508) 347-8181

The Elm Hill farm was built in the 1700s and at its peak was one of the largest working farms in the region and was best known as the home of "Elsie the Cow". The farm was the property of the family of the late Blanchard and Louise Means until 2009 when Rehabilitative Resources, Inc. (RRI) of Sturbridge took over operations. Mrs. Means envisioned the farm as a preservation place where the public and developmentally disabled individuals, like her daughter, would enjoy its natural beauty. RRI is currently fulfilling her wish by providing inclusive programs for all people including those with special needs through hands on activities using horticulture, horsemanship and the arts. Therapeutic horseback riding programs and handicapped accessible gardens. Also available for special events. Listed as a National Historic District.
www.rehabresourcesinc.org

GEORGE WASHINGTON MEMORIAL HIGHWAY

Across from the former Brookfield Inn on West Main Street (Rte 9). In 1789, our 1st President traveled through 5 of the New England states. This tour has become the basis for the "George Washington slept here" claims – but he never slept in Brookfield.
www.brookfieldma.us

BROWSE THE BROOKFIELDS and BEYOND



Take a picturesque ride through
the Brookfields and enjoy the
unique character of our area!

Contact us at:
44 Spring Street
North Brookfield, MA 01535
www.browsethebrookfields.com

Welcome Foodies!

Sit, Relax, Enjoy!

Where locals bring their guests!



Welcome to E.B.Flatts
Opened On Earth
February, 2006

Serving:

Sun thru Wed until 1:45 pm

Thurs, Fri, Sat serving 'til 8:45 pm

E.B.Flatts

245 W. Main (Rt 9) East Brookfield
508-867-6643 ebflatts.com



FINDERS KEEPERS ANTIQUES

Affordable Antiques and Gifts
Shop located in an Historic
Antique Colonial, in the Heart of
Downtown North Brookfield.

FindersKeepersAntiqueShop@verizon.net

228 Main St. (Rts. 67 & 148)
North Brookfield, MA

(508) 867-0115

www.FindersKeepersAntiques.net

Lamoureux Greenhouses

We are always growing!

Providing customers with hard to find
plants, herbs, shrubs, and common
varieties you would expect to find...
see the wonderful things growing!



9 Schoolhouse
Cross Road
Brookfield,
MA 01506

508-867-2218

www.lamoureuxgreenhouses.com

Lyon Iron

*Owned and operated by
Rob and Ruth Lyon*

Purveyors of fine antique iron
for Hearth and Home, offering
an outstanding selection of
fireplace furniture, cooking
utensils, and door hardware.



49 Snow Road
West Brookfield, MA 01585

(508) 867-7316

info@lyoniron.com

www.lyoniron.com



Appleblossoms

Flowers, Gifts & More

www.appleblossomsonline.com

Appleblossoms provides flower and gift
delivery to the Central MA area. We service
all the Brookfields, Oakham, Rutland, Paxton,
Sturbridge, Oxford and Worcester daily. Send
flowers for any occasion. We offer a large
variety of fresh flowers and gifts.

150a Main Street
Spencer, MA 01562
508-885-5567

POST & BOOT

House & Garden Accents



- Affordable antiques
- Birdhouses and feeders
- House number plates

78 E. Main Street (Route 9)
On the Common in
West Brookfield, MA.
(508) 867-5934

Pleasant Street Pub & Pizza at Ye Olde Tavern

Brick Oven
Pizza &
more!



Take out available (508) 867-9709
www.westbrookfieldtavern.com

Our thin crust pizzas are hand-stretched and baked in a custom built wood fired brick oven at temperatures which reach 900 degrees

Dinner specials Saturday and Sundays!

*Dinner served
7 nights a week
starting at 5:00pm*

Corner of Pleasant St.
& East Main St.
West Brookfield
MA 01585



Open
7 Days
10-6

"We Buy Books."

80,000 out of print and rare books!
"We travel for book collections and Estates."

(508) 867-8705

Toll Free 1-877-809-2665

80 W. Main Street On Rt. 9, West Brookfield, MA



the
Purple Onion
furniture & gift barn

Quality Country Furniture and Accessories

- Pottery - Gardenware
- Antique Reproduction
Lighting & Chandeliers
- Art Prints - Folk Art

(508) 867-9400

105 North Main Street, West Brookfield, MA



**We Make
House
Calls!**

Specializing in Clock sales and
Clock repair. A Howard Miller and
Ridgeway Authorized Service Center.

www.theclockbarn.com

508-867-7475

44 Spring Street • North Brookfield, MA



BROOKFIELD ORCHARDS

APPLES

Serving Hot Apple
Dumplings w/Ice cream

Visit Our Unique Country Store:

Vermont Cheddar Cheese, Cider, Honey, Preserves,
Fancy Baskets & Crafts, Candles, Maple Syrup,
Apple Pies & Dumplings, Antiques & Collectibles

Open 7 Days 9-5 Closed Thanksgiving,
Christmas and July 4th

(508) 867-6858 • (877) 622-7555

12 Lincoln Road, North Brookfield, MA
www.brookfieldorchardsonline.com
email: brookfieldo@aol.com



WHERE THE
FUN IS

(508) 867-6629

- 12 Lanes of Candlepin Bowling
- 18 Hole Miniature Gold Course
- Game Room • Billiard Tables
- Snack Bar • Beer and Wine

www.bogeylanes.com

199 North Brookfield Rd
East Brookfield, MA 01515



On a ridge overlooking the
countryside; relax & enjoy our
retreat from the activities of
neighboring Sturbridge & the
Brimfield Antiques Shows.

106 Five Bridge Road
Brimfield, MA 01010

(413) 245-0030

www.yankeecricket.com



M-F 8-8, Sat 9-5, Sun 11-5

Natural groceries including gluten-
free, supplements, unique greeting
cards, fair-trade & consignment items,
children books & toys.

(508) 867-0460

www.tiptoponline.us

8 Central Street • Brookfield, MA 01506



Celebrating 50 years of serving great New England food!

Salem Cross INN
RESTAURANT & TAVERN

260 West Main Street West Brookfield MA 01585

Hexmark Tavern

Tuesday thru Friday • 4 till 9:00

Dining Room Hours

Tuesday thru Friday • 11:30 AM - 9:00 PM

Saturday 5:00 - 9:00 PM • Sunday 12:00 - 8:00 PM

FULL CALENDAR OF EVENTS AT

www.salemcrossinn.com

508 867 2345



Keep Homestead Museum

Button collection, house museum, nature trails

Open House: 1:00-3:30pm

1st Sunday of month, April through December

35 Ely Road
Monson, MA 01057

413-267-4137

Mailing Address:

110 Main Street
Monson, MA 01057

khm@keephomesteadmuseum.org www.keephomesteadmuseum.org

GENERAL HENRY KNOX TRAIL MARKER

General Henry Knox passed here in the winter of 1775 – 1776 to deliver to General George Washington at Cambridge the train of artillery from Fort Ticonderoga used to force the British Army to evacuate Boston. On south side of Rt. 9, at junction of Main St.

www.hmdb.org

THE SPOONER WELL MARKER

Located on East Main Street. In March 1778, Joshua Spooner, a farmer in Brookfield, was beaten to death and his body stuffed down a well. Four people were hanged for the crime: two British soldiers, a young Continental soldier, and Spooner's wife, Bathsheba, who was charged with instigating the murder.

www.brookfieldma.us

EAST BROOKFIELD

BOGEY LANES ☼

199 North Brookfield Road
East Brookfield, MA 01515

(508) 867-6629

www.bogeylanes.com

"Where the FUN is!" Candlepin Bowling • Glow Bowling
18 Hole Miniature Golf • Billiards • Arcade Room • Birthday Parties • New Food Menu • Now Serving Beer & Wine
1/2 Mile off Rt 9 in East Brookfield.

QUINEBAUG WOODS

Dug Hill Road
Holland, MA 01521

(978) 840-4446

www.thetrustees.org

A short loop trail heads north along the Quinebaug River before turning west and proceeding up and over a steep hillside with rocky outcrops. On the exposed ridge stand the stone chimney and foundation steps that remain from a cabin built in 1932. Visitors can take in views of Blake Hill to the east and Hamilton Reservoir to the south.

MONSON

JACOB THOMPSON HOUSE

Main and Thompson Streets, Monson

(413) 267-4292

Jacob Thompson House (c. 1811), at Main and Thompson Streets, is the house museum of the Monson Historical Society. It is decorated with beautiful antiques from the Federal to the Victorian Period. www.monsonhistoricalsociety.org

22 • Quaboag Hills Region Visitor and Resource Guide • www.qhma.com

KEEP HOMESTEAD MUSEUM ☼

35 Ely Road, Monson, MA

(413) 267-4137

www.keephomesteadmuseum.org

Email: khm@keephomesteadmuseum.org

Open 1st Sunday of the month, 1:00-3:30pm, April through December. The museum features an extensive **Button collection** (one of the largest in the US), special exhibits and programs. It is also a house museum with the belongings of a family who lived in the home for over 150 years. Nature trails are open year-round (maps in parking lot) for hiking, cross-country skiing and snowshoeing. No admission charge. Special tours by appointment.

MEMORIAL HALL

Located on Main Street (c. 1884) a Romanesque Style building erected of Monson granite that contains an original G.A.R. Hall (Civil War) on its second floor, the original Town jail in the basement and the main hall used for theater, concerts and other events. www.monsonhistoricalsociety.org

MONSON FREE LIBRARY

2 High Street Monson, MA 01057

(413) 267-3866

www.monsonlibrary.com

NORCROSS FAMILY CEMETERY

Across the street from Norcross House (next to the Town Office Building) is the Norcross Family cemetery. Both Joel Norcross and his first wife, Betsey Fay (Emily Dickinson's grandmother) are buried here, along with other family members.

PEAKED MOUNTAIN

43 Butler Road, Monson, MA 01057

(413) 532-1631

www.thetrustees.org

From the 1,227-foot summit of Peaked ("pea-kid") Mountain, a panoramic view unfolds taking in Connecticut's Shenipsit State Forest to the south, Mount Monadnock to the north, and Mount Wachusett to the northeast. In between lies a sweep of rolling New England countryside. The valley overlook provides views of nearby Boulder Hill and the City of Springfield to the west.

PALMER**PALMER PUBLIC LIBRARY
RAILROAD RESEARCH CENTER**

1455 North Main Street
Palmer, MA 01069
(413) 283-3330
www.palmer.lib.ma.us

SPRINGFIELD**AMHERST RAILWAY SOCIETY
RAILROAD HOBBY SHOW**

PO Box 247
Monson, MA 01057-0247
www.amherstrail.org

DANIELSON, CT**THE LAST GREEN VALLEY, INC.**

P.O. Box 29/111 Main Street
Danielson, CT 06239
(866) 363-7226

www.thelastgreenvalley.org

The Last Green Valley is the popular name of the Quinebaug and Shetucket Rivers Valley National Heritage Corridor, designated by Congress in 1994 as an area of national significance. It remains more than 78% forest and farmland, and the region is comprised of 35 towns in northeastern Connecticut and south central Mass. Yankee Magazine recently called it, "A wide, quiet corridor of pretty villages and dreamy landscapes..." Enjoy our natural splendors, scenic byways, unique shopping and dining, charming accommodations, authentic American history and the arts. Immerse yourself in old-time nostalgia, so close to everywhere, yet distinctly far, far away from it all. Isn't time you took a break?

UNCASVILLE, CT**MOHEGAN SUN**

1 Mohegan Sun Boulevard
Uncasville, CT 06382

(888) 777-7922 For Hotel Reservations

(888) 226-7711 For General Information

GENERAL HENRY KNOX TRAIL MARKER

Through this place passed General Henry Knox in the winter of 1775 – 1776 to deliver to General George Washington at Cambridge the train of artillery from Fort Ticonderoga used to force the British Army to evacuate Boston. North side of Rt. 20, west of junction of Rt. 181. www.hmdb.org

SPENCER**GENERAL HENRY KNOX TRAIL MARKER**

Through this place passed General Henry Knox in the winter of 1775 – 1776 to deliver to General George Washington at Cambridge the train of artillery from Fort Ticonderoga used to force the British Army to evacuate Boston. On north side of Rt. 9, town center. www.hmdb.org

**SPENCER STATE FOREST**

Howe Pond Road, Spencer MA

Monument to Howe Family:

Elias Howe Jr 1819-1867 *Inventor of Sewing Machine 1846*

William Howe 1808-1852 *Inventor of Truss Bridge 1840*

Tyler Howe 1800-1880 *Inventor of Spring Bed 1855*

WARE-HARDWICK COVERED BRIDGE

The bridge was built in 1886 and added to the National Historic Register in 1986. The Gilbertville Covered Bridge spans the Ware River and joins the Massachusetts towns of Ware and Hardwick (in Gilbertville village). The bridge also joins the Massachusetts Hampshire (Ware) and Worcester (Hardwick) counties.

www.warehistoricalsociety.wetpaint.com

WARE CENTER MEETING HOUSE

(413) 967-7136

The First Congregational Church, also known as the Ware Center Church and Meeting House, is the oldest church in Ware. It originally served as both a church and a seat of town government for Ware Parish. Behind the church is a burial ground reserved for ministers and deacons and their families. Ware Center was the center of the town, the town green and a meeting place where one could find a tavern, the blacksmith, the animal pound.

www.warehistoricalsociety.wetpaint.com

GENERAL HENRY KNOX TRAIL MARKER

Through this place passed General Henry Knox in the winter of 1775 – 1776 to deliver to General George Washington at Cambridge the train of artillery from Fort Ticonderoga used to force the British Army to evacuate Boston. On south side of Rt. 67, ¾ mile east of Warren Center. www.hmdb.org

WEST BROOKFIELD**FORT GILBERT MEMORIAL**

North Main Street
Route 67 Just North of School Street
www.westbrookfield.org



HISTORIC FOSTER HILL

A driving or walking tour highlights five historic sites associated with the 1665 Quaboag Plantation, King Philip War, and the place where in 1779 Jedediah Foster wrote the Massachusetts State Constitution. www.westbrookfield.org

LUCY STONE HOMESITE HOMESTEAD

Destroyed by fire, with stone marker outlining accomplishments of Lucy Stone, early champion of women's rights. www.westbrookfield.org

OLD INDIAN CEMETERY

Cottage Street, North of Route 9 this cemetery keeps a silent vigil to much of West Brookfield's history. It is the resting place of 16 French and Indian War soldiers, 11 Revolutionary War soldiers, and 6 men who were killed in 1710 by Indians and became known as the Haymakers. It is also the resting place for Jedediah Foster, his wife and daughter, and the Honorable Diederick Leertouwer. This cemetery was used from 1710 to 1849. Enjoy some of the spelling and wording used in old times. The cemetery has a rectangular shape and is surrounded by stone walls on all sides. There is one walk-in entrance on Cottage Street. The landscape remains rough and unadorned. It has the plainness of an old graveyard. www.westbrookfield.org

ROCK HOUSE RESERVATION

(978) 840-4446

Route 9, West Brookfield, MA

A massive, cave-like rock shelter, exposed after the glacial retreat 10,000 years ago, served as a winter camp for Native Americans. By mid 1800's, it was part of a farm owned by William Adams whose descendant, F. A. Carter, dammed a small stream to create Carter Pond and built the cottage now serving as a trail-side museum and nature center. Open year round, daily, sunrise to sunset. Admission is free to all.

www.thetrustees.org

WHITEFIELD ROCK UPON FOSTER HILL

On the sixteenth of October in the year 1740 the touring evangelist preacher Reverend George Whitefield gave one of his rousing sermons from a large rock upon Foster Hill to at least four to five hundred people. Considering that this pasture was located in the heart of a still thinly settled region, this eighteenth century gathering must indeed have been a notable event.

www.westbrookfield.org

**For More Attractions Info
visit www.qhma.com**



RAILROAD HOBBY SHOW



2013 Railroad Hobby Show

- Raffle of a professionally completed layout. All proceeds will go to benefit the Baystate Medical Foundation - Children's Cancer Center.
- More than 40 operating layouts
- G, O, S, HO, N & Z Scale
- Manufacturers, displays, model dealers, booksellers, railroadiana, clinics, live steam.
- Historical societies & railroad industry representatives.
- Popular model railroad clinics, both days.

January 26th & 27th, 2013

Eastern States Exposition

1305 Memorial Avenue

West Springfield, MA 01089

Better Living Center - Young Building - Stroh Building - Mallary Complex

Saturday: 9 am - 5 pm | Sunday 10 am - 5 pm



Under 16 National Layout Building Contest
Please visit us online at:
www.RailroadHobbyShow.com
for details.

For more information or to join the Amherst Railway Society
Please visit us online at:
www.AmherstRail.org

Follow us on Facebook at:
<http://www.facebook.com/AmherstRail.org>



**BRIMFIELD****HOLLOW BROOK FARMS**

73 Hollow Road, Brimfield, MA 01010

(413) 245-9325

www.hollowbrookfarms.com

Want to travel to and from your wedding in a romantic horse drawn carriage and have your ceremony in a beautiful country setting? All this and more is waiting for you in Brimfield, MA. There are meadows, woodlands, ponds, covered bridges, and an open air chapel for your ceremony and wedding photos. Horses, carriages and wagons available for Weddings, Hayrides and more.

BROOKFIELD**LAMOUREUX GREENHOUSES**9 Schoolhouse Road
Brookfield, MA 01506**(508) 867-2218**

Family run business. 10 Greenhouses on 25 acres fully established nursery. Fish and water plants.

MONSON**KORAN'S FARM AND GIFT SHOP**

160 East Hill Road, Monson, MA 01057

(413) 267-3396

Greenhouses – PYO Strawberries. Our own sweet corn, tomatoes and other produce. Yankee Candles, Kringle Candles, Chamilia, Polish Pottery, Amish Furniture, Christmas trees & wreaths and more. Daily May-Oct; Nov-Dec Call for details.

WESTVIEW FARMS CREAMERY ♿

111 East Hill Road, Monson, MA 01057

(413) 267-5355

Open daily mid April to Nov. 1st. **Full Restaurant**, farm and garden supplies, pumpkin picking, ice cream, hamburgs, hotdogs, chicken, seafood, wraps and more. School trips, and busses welcome by reservation. Petting zoo! **Busses welcome!**

PALMER**PATHFINDER REGIONAL VOCATIONAL TECHNICAL HIGH SCHOOL**Horticultural Department
240 Sykes Street, Palmer, MA 01069**(413) 283-9701**

Horticultural Department sells flowers the week beginning the week of Mother's Day until sold out. School hours only. Holiday Wreaths and Poinsettias are sold the week after Thanksgiving.

FIVE STAR GARDENS

181 Ware Street (Rt 32), Palmer, MA 01069

(413) 283-4900

www.fivestargardens.com

The Garden Center is situated on three acres, beautifully landscaped by the display of our products. This setting makes the Garden Center a most enjoyable and relaxing shopping experience as you stroll through the wide assortment of unusual plant offerings and garden essentials.

NORTH BROOKFIELD**BROOKFIELD ORCHARDS** ♿

12 Lincoln Road, N. Brookfield, MA 01535

(508) 867-6858 • (877) 622-7555

www.brookfieldorchardsonline.com

Email: brookfieldo@aol.com

More than an apple orchard, pick your own apples starting Labor Day. **Snack bar** – hot apple dumplings and ice cream, cheese, cider. **Country Store** – honey, common crackers, maple products. "Penny Candy". Antiques and collectables, playground, picnic tables. Open year round 9-5. Closed Thanksgiving, Christmas and July 4th.

WARREN**BREEZELAND ORCHARDS** ♿

1791 Southbridge Road, Warren, MA 01083

(413) 436-7100 Fax (413) 436-7122

www.breezelandorchards.com

Farm stand opens August 1st thru Thanksgiving with peaches, apples, cider, donuts, and pies. Pick your own apples September 1st thru October.

WEST BROOKFIELD**RAGGED HILL ORCHARD**94 John Gilbert Road
West Brookfield, MA 01585**(508) 867-2187**

www.raggedhill.com

Apples – Cortlands, Delicious and more; cider, peaches, raspberries, blueberries; in season.



Store Hours:
 Monday-Friday 7:00am-6:00pm
 Saturdays 8:00am-5:00pm
 Sundays 9:30am-5:00pm

(413) 477-6913
Its like shopping back in time.
Hardwick's best kept secret.

Breezelands
 ORCHARDS



the APPLE MAN

**Our Farm Stand is
 open August thru
 Thanksgiving**

Apples, peaches, pies baked
 daily, cider doughnuts and
 Pick your own!

**Store is open 7 days a week
 Doors open at 10:00am**

www.breezelandsorchards.com

(413) 436-7122 1791 Southbridge Road, Warren

Hardwick Vineyard & Winery



We welcome visitors for tastings, tours, sales, and special events. Our Timber Frame Barn is a wonderful place to hold your Wedding, Rehearsal Dinner, Baby Shower, Corporate Outing, etc. Any event is made memorable at the Hardwick Vineyard & Winery. - The Samek Family

Hours:
 Friday-Monday
 11am-5pm



Bring in this
 ad for FREE
 Wine Tasting!

▼-▼-▼- 6 VARIETIES -▼-▼-▼-

• Giles E. Warner - dry white wine • Yankee Boy - semi dry white wine • Yankee Girl Blush - light wine • Massetts Cranberry-Grape wine w/cranberry concentrate • Hardwick Red - Massachusetts
 Marechal Foch • Quabbin Native - Red Wine

3305 Greenwich Road - Hardwick, MA

413-967-7763 • www.hardwickwinery.com

**Howard's
 Drive-in** Since
 1947

**Route 9, West Brookfield
 (508) 867-6504**

Call for Take out • Picnic Tables
 Open April - October

Specializing in: Fresh Seafood • Chicken
 Ribs • Burgers • Dogs • Icecream

**REED'S
 COUNTRY STORE**

Route 67 • New Braintree, MA

**SPECIAL DINNER MENU
 FRIDAY EVENINGS!**

**Serving breakfast & lunch
 country style since 1977**

BREAKFAST Sun. 8am-12pm
 BREAKFAST & LUNCH T-Th & Sat. 7am-2pm
 LUNCH & DINNER Fri. 11am-2pm & 5-9pm
508-867-9512

**Welcome Foodies!
 Sit, Relax, Enjoy!**



Open 7 days ... All of them for Breakfast and Lunch
 Even some of them for Dinner

Serving Sunday thru Wednesday until 1:45 pm
 Thursday, Friday, Saturday serving 'til 8:45 pm

Where the locals bring their guests!

E.B. Flatts

245 W. Main (Rt 9) East Brookfield
508-867-6643 ebflatts.com

restaurants

BRIMFIELD

APPLE BARN CAFE

52 Palmer Road
Brimfield, MA 01010
(413) 245-4575



ATHENS PIZZA

26 Sturbridge Road • Rt. 20
Brimfield, MA 01010-9506
(413) 245-PIZZA • (413) 245-9437
Hours: Sun–Wed 10am–9pm • Thurs–Fri 10am–10pm

BROOKFIELD

CARMELLA'S ITALIAN KITCHEN

55 South Maple Street
Brookfield, MA 01506
(508) 867-5475
www.carmellasitaliankitchen.com
Sunday: 12 Noon to 9pm, Mon–Thurs: 11am to 9pm
Fri & Sat: 11am to 10pm. Just minutes from Sturbridge!

EAST BROOKFIELD

E.B. FLATTS

245 W. Main Street (Rt. 9)
East Brookfield, MA 01515
(508) 867-6643
Good food, great atmosphere, breakfast and lunch daily, dinner Thurs–Saturday.

GILBERTVILLE

ROSE 32 BREAD BAKERY AND CAFE

412 Main St.
Gilbertville, MA 01031
(413) 477-9930
www.rose32bread.com
A modern Cafe specializing in Exceptional hearth baked organic Artisan. Breads and Pastries, cooked to order breakfast and lunch, Coffee, Espresso drinks, Beer and Wine. Eat in, outside on the patio or take out. See our Web site for our complete product list, our menu and our story.

Athens Pizza



413-245-PIZZA
413-245-9700
413-245-9437

Hours:
Sun–Wed 10am–9pm
Thurs–Fri 10am–10pm

26 Sturbridge Road, Brimfield, MA • Rt. 20

HARDWICK

CLOVER HILL COUNTRY STORE

1839 Lower Road
Hardwick, MA 01037
(413) 477-1048
www.cloverhillcountrystore.com
Email: cloverhillcountrystore@gmail.com
Boar's Head Deli, Sandwiches, grocery, gifts. Ice cream window.
Open: Mon–Fri. 6am–6pm, Sat. 8am–6pm, Sun. 8am–5pm

HARDWICK VINEYARD & WINERY

3305 Greenwich Road
Hardwick, MA 01037
(413) 967-7763 Fax (413) 967-7763
www.hardwickwinery.com
We welcome visitors for wine tastings, tours, sales, and special events. Weddings, rehearsal dinners, baby showers, corporate outings etc.

MONSON

THE QUARRY TAVERN

216 Main Street
Monson, MA 01057
(413) 267-0267
Open Mon. thru Fri. at 4pm, and Sat. and Sun. noon to close, serving American-Fare comfort foods and offering live entertainment on the weekends. Check us out on Facebook!



**Serving Fresh Seafood,
The Best Lobster Roll, &
Creamiest Ice Cream
around since 1956**



A Family Tradition

Janine's Frostee

149 East St Ware

413-967-7950

www.janinesfrostee.com



WESTVIEW FARMS CREAMERY ♿

111 East Hill Road, Monson, MA 01057
(413) 267-5355

Open daily mid April to Nov. 1st. Full Restaurant and farm, pumpkin picking, ice cream, hamburgs, hotdogs, chicken, seafood, wraps and more. School trips, field trips and busses welcome by reservation. Petting zoo! Busses welcome!

NEW BRAINTREE

REED'S COUNTRY STORE

753 Barre Road, Route 67
 New Braintree, MA 01531
(508) 867-9512

Breakfast Sun 8am-12pm
 Breakfast & Lunch T-Th & Sat 7am-2pm
 Lunch & Dinner Fri 11am-2pm & 5-9pm

PALMER

ALVIN RONDEAU'S DAIRY BAR

Route 32 / Ware Road
 Palmer, MA 01069
(413) 284-0068

Serving Homemade Ice Cream Since 1940! 42 Flavors • 5 No Sugar Added • 5 Sorbet • Cheeseburgers • Hotdogs • Grinders French Fries • Always Fresh Seafood!

STURBRIDGE

PUBLIC HOUSE

On the Common, 277 Main Street - Route 131
 Sturbridge, MA 01566-0187

(508) 347-3313 • 800-PUBLICK

www.publichouse.com

Founded in 1771, and listed in the National Register of Historic Places. Enjoy cozy and relaxing atmosphere in our Dining Tap Room, our Historic Tap Room, or Ebenezer's Tavern. All three have menus available online at publichouse.com. We also have a real 18th-century bakery where irresistible things come out of our Yankee ovens. Weddings and catered events available. Reservations are recommend for dining.

WARE

JANINE'S FROSTEE INC.

149 East Main Street
 Junctions of Rts 9 & 32
 Ware, MA 01082
(413) 967-7950

www.janinesfrostee.com

Janine's is a seasonal, family friendly drive-in serving the best foods and ice cream in the area since 1956. We have safe and comfortable covered seating areas, as well as live music and various events throughout the season. Check us out on the web or stop by and see us in person, we'd love to meet you. Janine's Frostee is worth the drive from anywhere! Full Menu – Open daily at 11 am – Call ahead for take-out.



For more restaurant info
 visit www.qhma.com

WEST BROOKFIELD

HOWARD'S DRIVE-IN

121 East Main Street (Rt.9)
 West Brookfield, MA 01585

(508) 867-6504

Specializing in: Fresh seafood, chicken, ribs, burgers, dogs and ice cream. Open Daily at 11am.

**PLEASANT STREET PUB & PIZZA
 AT YE OLDE TAVERN**

Corner of Pleasant Street & East Main Street
 West Brookfield, MA 01585

(508) 867-9709

www.westbrookfieldtavern.com

Brick Oven Pizza and more. Dinner served 7 nights a week starting at 5:00pm.

**SALEM CROSS INN RESTAURANT &
 HEXMARK TAVERN** ♿

260 West Main Street, Route 9
 West Brookfield, MA 01585

(508) 867-2345 Fax (508) 867-0351

www.salemcrossinn.com

Email: info@salemcrossinn.com

Restored 1700s homestead where fine food and drinks are served in traditional New England style.

BRIMFIELD

THE PARTY RENTAL CENTER

1 (800) FOR-TENT or (508) 234-8748

Tent and table rental featuring Clearspan Tents.

Set up before you arrive.

BROOKFIELD

SKINGLO ESTHETICS

8 Central Street
Brookfield, MA 01506

(413) 436-9141

By Appointment

A skin care salon for men and women.

Facials • Waxing • Body Treatments • Gift Certificates

HARDWICK

HARDWICK POST & BEAM CORP.

272 Fleming Rd
Hardwick, MA 01037

(413) 477-6430

www.hardwickpostandbeam.com

Email: contact@hardwickpostandbeam.com

Build your dream! We custom design and handcraft timber frames of exceptional strength, efficiency, and beauty.

MONSON

GREENE ROOM PRODUCTIONS

54 High Street • Monson, MA 01057

(413) 668-7284

Greene Room Productions; Theatre Production and Educational Outreach Inc. is dedicated to producing culturally diverse quality entertainment, while providing unique, hands-on opportunities in theatre performance and production, enriching the lives of local children and adults.

MONSON ARTS COUNCIL

PO box 306
Monson, MA 01057

(413)267-9764

maccalendarevents@hotmail.com

www.monsonartscouncil.com

A non-profit organization dedicated to providing cultural events for Monson and the surrounding area.

MONSON SAVINGS BANK

146 Main Street • Monson, MA 01057

(413) 267-4646 Fax (413) 267-3705

www.monsonavings.com

NORTH BROOKFIELD

NORTH BROOKFIELD SAVINGS BANK

35 Summer Street
North Brookfield, MA 01535

(508) 867-7442 Fax (508) 867-7574

www.banknbsb.com

PALMER

BRETON ESTATES / RB ENTERPRISES

Nipmuck Street, P.O. Box 109
Palmer MA 01069

(413) 283-6940 Fax (413) 583-8392

General Contractor, Home Builder, Sand & Gravel operation, Excavator and Trucking.

PALMER SUPERIOR PLUMBING & HEATING, INC

1293 S. Main Street
Palmer, MA 01069

(413) 283-7561

Bath Accessories, Bathtubs, Boilers, Faucets, Fittings, Furnaces, Homeowners Equipment, Kitchen Supplies, Parts, Piping & Pipe Supplies, Plastic Pipe, Steel, Toilets, Water Pumps, Plumbing Repairs, Repairs.

ROBERTS & SONS PRINTING, INC.

1415 Main Street, PO Box 956
Palmer, MA 01069

(413) 283-9356 Fax (413) 283-4403

Email: sales@robertsprinting.com

www.robertsprinting.com

Full-service commercial printer offering single through full color printing, graphic design and marketing services, mailing + fulfillment services. Family owned and operated since 1981.

TOP FLOOR LEARNING, INC.

1455 North Main Street, Third Floor
Palmer, MA 01069

(413) 283-2329

www.topfloorlearning.org

Email: cstgeorge@topfloorlearning.org

Top Floor Learning, a non-profit organization, seeks to strengthen the cultural, civic and economic fabric of the community with adult literacy services such as GED, ESL and one-to-one tutoring in reading, writing and math.

WING MEMORIAL HOSPITAL AND MEDICAL CENTERS

40 Wright Street, Palmer, MA 01069

(413) 283-7651 Fax (413) 284-5212

www.wingmemorialhospital.org

Wing Memorial Hospital offers **24 hour emergency care** and an array of primary and specialty care physicians.

THE YELLOW HOUSE

1479 N Main St, Palmer, MA 01069

(413) 289-6091

www.yellowhousecccl.com

The Yellow House is a non-profit community learning center located in the heart of downtown Palmer, serving the residents of the Quaboag Hills and Pioneer Valley. The Yellow House offers a wide variety of classes, workshops, lectures and special events. In addition, rooms in the Yellow House are available for community groups to gather.

SOUTH HADLEY**HAMPSHIRE TOWING**

650 New Ludlow Rd.
South Hadley, MA 01075

(413) 323-7855

www.hampshiretowing.com

24 Hours. Road Service. Lockouts. Autos motorcycles. Light / heavy trucks. Motorhomes. Heavy equipment transport

SPENCER**SPENCER SAVINGS BANK**

176 Main Street
Spencer, MA 01562

(508) 885-5313

www.spencersavingsbank.com

WARE**BAYSTATE HOME INFUSION & RESPIRATORY SERVICES**

85 South Street, Ware, MA 01082

(413) 967-2855

baystatehealth.org/bhirs

Your source for home medical equipment and supplies.

BAYSTATE MARY LANE HOSPITAL 

85 South Street, Ware, MA 01082

(413) 967-6211

Fax (413) 967-2109

www.baystatehealth.com/mlh

Inpatient facility with Intensive Care, **24-hour emergency care**, general medical and surgical care, diagnostics, laboratory, and more.

CENTURY 21**DORRINDA O-KEEFE-SHEA**

109 West Street, Ware

(978) 434-1990

www.dorrindasellshomes.com

**CHICOPEE SAVINGS BANK**

350 Palmer Road Suite 100

Gibbs Crossing

Ware, MA 01082

(413) 594-6692 (888) 758-7272

(24-Hour Access Line)

www.chicopeesavings.com

Member FDIC and Member DIF. Come visit us at our newest branch located at Gibbs Crossing, 350 Palmer Road, Suite 100, in Ware.

COUNTRY BANK FOR SAVINGS

75 Main Street

Ware, MA 01082

(413) 967-6221

www.countrybank.com

GUZIK MOTOR SALES, INC

Routes 9 and 32, Ware, MA 01082

(413) 967-4210

Jeep Dealership with 50 years of sales and service in Ware!

FAMILYFIRST BANK

40 Main Street

Ware, MA 01082

(413) 967-6271

www.FamilyFirstBank.com

NAPA AUTO PARTS

175 West Street, Ware, MA 01082

(413) 967-5121

Rt 9 Belchertown, MA 01007

(413) 323-9296

Rt 9 West Brookfield, MA 01585

(508) 867-9947

QUABBIN WIRE & CABLE CO., INC.

10 Maple Street, Ware, MA 01082
(413) 967-6281
Fax (413) 967-7564
www.quabbin.com
Email: sales@quabbin.com
Manufacturers of high-speed Ethernet and a variety of precision data cables for control, instrumentation and diagnostics.

ST. GERMAIN INSURANCE INC.

246 West Street, PO Box 630
Ware, MA 01082
(413) 967-6341 • (800) 499-9561
Fax (413) 967-9537
www.stgermaininsurance.com
Email: info@stgermainins.com
Providing Happy, Friendly & Professional Insurance Coverage Since 1966
"Call with ANY Insurance Question"



WARREN

THE CENTERED PLACE YOGA STUDIO

286 Bridge Street, Warren, MA 01083
(413) 436-7374 (800) 815-7374
www.thecenteredplace.com
Email: thecenteredplace@comcast.net

WEST BROOKFIELD

BROOKHAVEN ASSISTED CARE

19 West Main Street
West Brookfield, MA 01585
(508) 612-7525 Call Nancy B.
(508) 867-3325 Nancy O. or Jen
brookhavenassistedcare.com
24 hour care, medical management, RN on staff, assistance with activities of daily living, activity program and a well trained, compassionate and caring staff.

WILBRAHAM

HAMPDEN BANK

2005 Boston Road, Wilbraham, MA 01095
(413) 452-5280 www.hampdenbank.com

POST COMPUTER SYSTEMS

2400 Boston Road
Wilbraham, MA 01095
(413) 596-5177
www.pocosys.com
We offer on-site and in-house support, maintenance contracts and preventative maintenance service. Virus removal and data protection are our forte and we can improve the performance of almost any system with an expert tune up.

COMMUNITY SERVICES

QUOBOAG VALLEY COMMUNITY DEVELOPMENT CORPORATION

23 West Main Street, Suite 1
Ware, MA 01082
(413) 967-3001 Fax (413) 967-3008
www.qvcdc.com

A member-based non-profit that serves the 15 towns of the Quaboag Hills Region; offering many programs and services with a focus on Economic Development.

MASS. DIVISION OF FISHERIES & WILDLIFE

1 Rabbit Hill Rd., Westboro, MA 01581
(508) 389-6300
www.mass.gov/masswildlife
Fishing, Hunting, Wildlife Viewing Information

MASS. DEPT. OF CONSERVATION & RECREATION

251 Causeway Street, Boston, MA 02114
(617) 626-1400
www.mass.gov/massparks
State Parks, Forests and Campgrounds

MASS. DEPT. OF AGRICULTURAL RESOURCES

251 Causeway St., 5th Fl.
Boston MA 02114
www.mass.gov/massgrown
Farmer's Markets, Pick Your Own, Farm Stands

MASSACHUSETTS OFFICE OF TRAVEL AND TOURISM

10 Park Plaza, Suite 4510
Boston, MA 02116
(617) 973-8500
www.massvacation.com

"Small businesses and individual entrepreneurs are the backbone of the Quaboag Valley economy"

TODD M. SMOLA

STATE REPRESENTATIVE
1ST HAMPDEN DISTRICT
REP.TODDSMOLA@HOU.STATE.MA.US



STATE HOUSE, ROOM 156
BOSTON, MA 02133
617.722.2240

The Commonwealth of Massachusetts
HOUSE OF REPRESENTATIVES



Guzik Motor Sales, Inc

**Routes 9 and 32
Ware, MA**

**50 Years of Sales
and Service in
Ware!**



The Commonwealth of Massachusetts
HOUSE OF REPRESENTATIVES

REP. ANNE M. GOBI
REPRESENTATIVE
WORCESTER DISTRICT

Rep. Anne Gobi • Room 473F
State House, Boston, MA 02133
617 722 2210
Email Anne.Gobi@mahouse.gov
District number 1 800 650 4624



**Senator
Steve Brewer**

*He's Working
for You!*

State House Room 109-B, State House
Boston, MA 02133

Telephone: 617-722-1540 Fax: 617-722-1078
Email: Stephen.Brewer@massmail.state.ma.us

www.stevbrewer.org



and Table Rental
on your lot when you arrive

Call toll free

1-(800) 367-8368

(1-800-FOR-TENT) or

(508) 234-8748

We feature Clearspan Tents.

The Tent Connection



Dorrinda O'Keefe-Shea
109 West Street, Ware



*For All Your
Real Estate
Needs*

www.DorrindaSellsHomes.com • 978-434-1990

For more Services & Shopping info
visit www.qhma.com



Make your Long Term Care Resources go farther!

Brookhaven Assisted Care

- 44 years providing Residential Care for seniors with forgetfulness, confusion, early to moderate Dementia, Depression, Diabetes, Heart Disease, Arthritis or just in need of tender loving care and supervision
- Medical management coordinated by RN on staff
- Physician, Physical Therapy, Psychiatric, Podiatry and Hospice services available in-house
- Beautiful, homelike living environment at costs far below that of Nursing Homes.

Google **Brookhaven Assisted Care.**
You will be pleasantly surprised!

Call Nancy B. 508-612-7525 • Nancy O. or Jen 508-867-3325
brookhavenassistedcare.com

**Wilton Children's
Clothing Outlet**

50 East Main Street
Ware, MA 01082
(413) 967-5811 • www.wiltonkids.com
Largest children's clothing store in Western Mass.
Featuring Columbia for adults and children. Carters, OshKosh, Rothschild and more - discounted everyday.
Open Mon-Sat 9-5, Sun. 12-5.
Visit our website for coupons!



**Cormier Jewelers
& Art Gallery**

(508) 885-3385
www.CormierSpencer.com

A Family Business Since 1949
Stop by for Free Cleaning and Inspection of your rings.

Please call for Store Hours
Gallery is Open to Public

136 MAIN STREET, SPENCER, MA 01562

JOHN & GAIL LEBIDA

PALMER SUPERIOR



**PLUMBING • HEATING
SUPPLIES**

COMMERCIAL • INDUSTRIAL • RESIDENTIAL

1293 SOUTH MAIN STREET
PALMER, MA 01069

FAX: 283-6120
PHONE: (413) 283-7561

NICK'S SPORT SHOP INC.
EST. 1945



We Buy,
Sell & Consign Guns

HOURS:
WED-FRI 9-5:30
SAT 9-3

1029 ParK Street
Palmer, MA 01069
(413) 283-3920

www.nickssportshop.com

HUNTING
ARCHERY
METAL DETECTORS

FISHING
KNIVES
BASEBALL
BOOTS

Dick & Sue
Hamilton



BROOKFIELD

BROWSE THE BROOKFIELDS AND BEYOND

www.browsethebrookfields.com

Take a picturesque ride through the Brookfields and enjoy unique specialty shops and restaurants.

DAVE'S APPLIANCES INC.

42 W. Main Street
Brookfield, MA 01506

(508) 867-3122

www.davesapp.com

Family owned and operated business serving the central Massachusetts area for over 35 years. Sales & Service All Brands. Complete Line of New Appliances Factory Authorized Technicians. M-W 9am-6pm Thur 9am-7pm Frid 9am-5pm Sat 9am-3pm

TIP TOP COUNTRY STORE

8 Central Street, Brookfield, MA 01506

(508) 867-0460

M-F 8-8, Sat 9-5, Sun 11-5. Natural groceries including gluten-free, supplements, unique greeting cards, fair-trade & consignment items, children books & toys.

EAST BROOKFIELD

HOWE LUMBER CO.

555 East Main Street
East Brookfield, MA 01515

(508) 885-5396 Fax (508) 885-7667

www.howelumber.com

HARWICK

HARDWICK FARMERS CO-OP

444 Lower Road
Gilbertville, MA 01031

(413) 477-6913

www.hardwickfarmers.net

MONSON

JULIET ROSE GALLERY

191 Reimers Road
Monson, MA 01057

(413) 596-9741

www.julietrosegallery.net

email: julietrose1@verizon.net

The gallery features a slice of New England and a spice of Jamaica. The Juliet Rose Gallery focuses on unique exhibits in the areas of jewelry, pottery, paintings, sculpture, photography, prints, and weaving. All works are hand-crafted.

KORAN'S FARM AND GIFT SHOP

160 East Hill Road, Monson, MA 01057

(413) 267-3396

Greenhouses – PYO Strawberries. Our own sweet corn, tomatoes and other produce. Yankee Candles, Kringle Candles, Chamilia, Polish Pottery, Amish Furniture, Christmas trees & wreaths and more. Daily May-Oct; Nov-Dec Call for details.

NORTH BROOKFIELD

THE CLOCK BARN HOME OF NOISY BEAGLE ANTIQUE SHOPPE

44 Spring Street
North Brookfield, MA 01535

(508) 867-7475

www.noisybeagle.com

Specializing in Clock sales and Clock repair. A Howard Miller and Ridgeway Authorized Service Center.

PALMER

LIFE'S MEMORIES & MORE

1085 Park Street • Schoolhouse Commons
Palmer, MA 01069

(413) 283-4448

www.lifememoriesandmore.com

Your Scrapbook Store & More offers 1000's of paper craft products, classes, crops, and custom services.

NICK'S SPORT SHOP

1029 Park Street, Palmer, MA 01069

(413) 283-3920 • Fax (413) 283-4389

www.nickssportshop.com

We Buy, Sell & Consign Guns

Hours: Wed-Fri 9-5:30, Sat 9-3.

Hunting, Archery, Metal Detectors, Fishing, Knives, Baseball, Boots

SPENCER

APPLEBLOSSOMS

150a Main Street
Spencer, MA 01562

(508) 885-5567

www.appleblossomsonline.com

We provide flower and gift delivery to the Central MA area, servicing all the Brookfields, Oakham, Rutland, Paxton, Sturbridge, Oxford and Worcester daily. Send flowers for any occasion. We offer a large variety of fresh flowers and gifts.

CORMIER JEWELERS

136 Main Street, Spencer, MA 01562

(508) 885-3385 Fax (508) 885-7660

www.cormierspencer.com

Family owned and operated since 1949, we at Cormiers offer personal and friendly service. Financing available.

WARE

DAVE'S SODA AND PET CITY

140 West Street
Ware, MA 01082

(413) 967-3684

www.davessodaandpetcity.com

We have a wide array of supplies and treats for your favorite pets, aquariums and fish, cages, real creepy crawlers and bird carriers.

WILTON CHILDREN'S CLOTHING OUTLET

50 East Main Street, Ware, MA 01082

(413) 967-5811 Fax (413) 967-6047

www.wiltonkids.com

Largest children's clothing store in Western Mass. Featuring Columbia for adults and children. Carters, OshKosh, Rothschild and more - discounted everyday. Open Mon-Sat 9-5, Sun. 12-5. Visit our website for coupons!

WEST WARREN

WHISKEY HILL SPORTS

220 Ware Road
West Warren, MA 01092

(413) 436-5885

www.whiskeyhillsports.com

Guns bought, sold and traded.

WEST BROOKFIELD

THE BOOK BEAR

80 W. Main Street On Rt. 9
West Brookfield, MA 01585

(508) 867-8705

Toll Free 1-877-809-2665

80,000 out of print and rare books! "We Buy Books. We travel for book collections and estates."
Open 7 days a week, 10-6

LYON IRON

P.O. Box 501, West Brookfield, MA 01585

(508) 867-7316

info@lyoniron.com

Purveyors of fine antique iron for hearth and home, offering an outstanding selection of fireplace furniture, cooking utensils, and door hardware.

MILLER ANTIQUES ON THE COMMON

15 School Street
West Brookfield, MA 01585

(508) 867-2679

Open by Appointment or Chance - Antiques and Architectural Materials, Entire Dismantled Houses & Barns. Restoration

Services Available.

POST & BOOT

78 E. Main Street
West Brookfield, MA 01585

(508) 867-5934

On the common in West Brookfield. House & Garden Accents. Affordable antiques, birdhouses and feeders, and house number plates.

THE PURPLE ONION

105 N. Main Street
West Brookfield, MA 01585

(508) 867-9400

Quality Country Furniture and Accessories, Antique Reproduction, Art Prints and more.

WICKABOAG VALLEY BAIT & TACKLE

6 Wickaboag Valley Road
West Brookfield, MA 01585

(508) 867-8389

www.WickaboagBait.com

We sell live Shiners including Jumbo Pond Shiners, Rosy Red Minnows, Suckers, Night Crawlers, Meal Worms, Wax Worms, and Spikes. Open Fri, Sat, Sun 6am-6pm.



Photo by Don Roberts



YOUR NEIGHBOR SINCE 1975

Specializing in:

Weddings ~ Proms ~ Showers

Company Outings & Holiday Parties

Tradeshows, Meetings & Conferences



The Getaway that Isn't Far Away

Indoor Heated Pool

Family Vacation Packages

Lakeside Resort

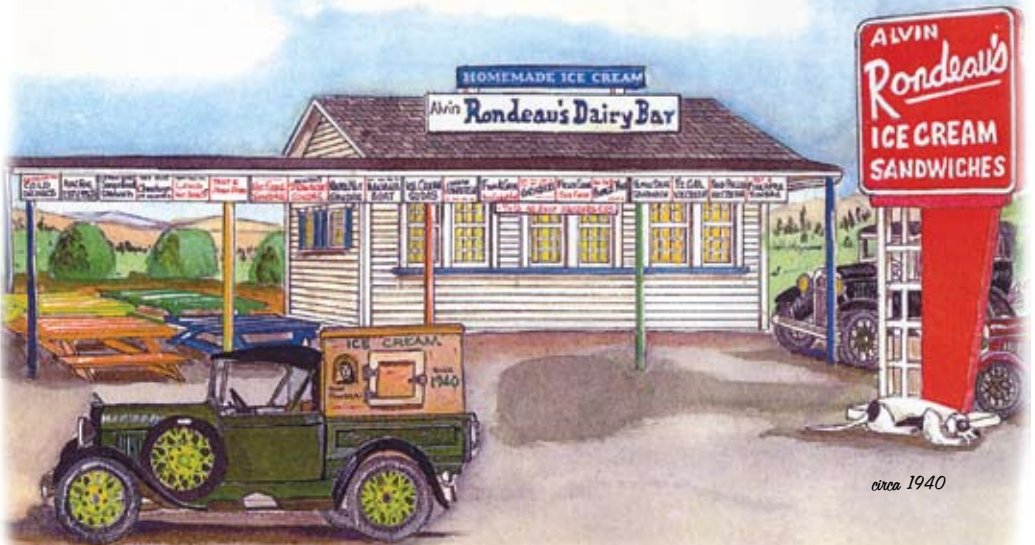
366 Main Street, Sturbridge, MA (508) 347-7393

www.sturbridgehosthotel.com

Alvin Rondeau's Dairy Bar

Serving Homemade Ice Cream
Since 1940!

42 Flavors • 5 No Sugar Added • 5 Sorbet
Cheeseburgers • Hotdogs
Grinders • French Fries
Always Fresh Seafood!



circa 1940



The 2010 Quaboag Hills Chamber of Commerce Business of the Year

(413) 284-0068

**Route 32 / Ware Road
Palmer, MA 01069**