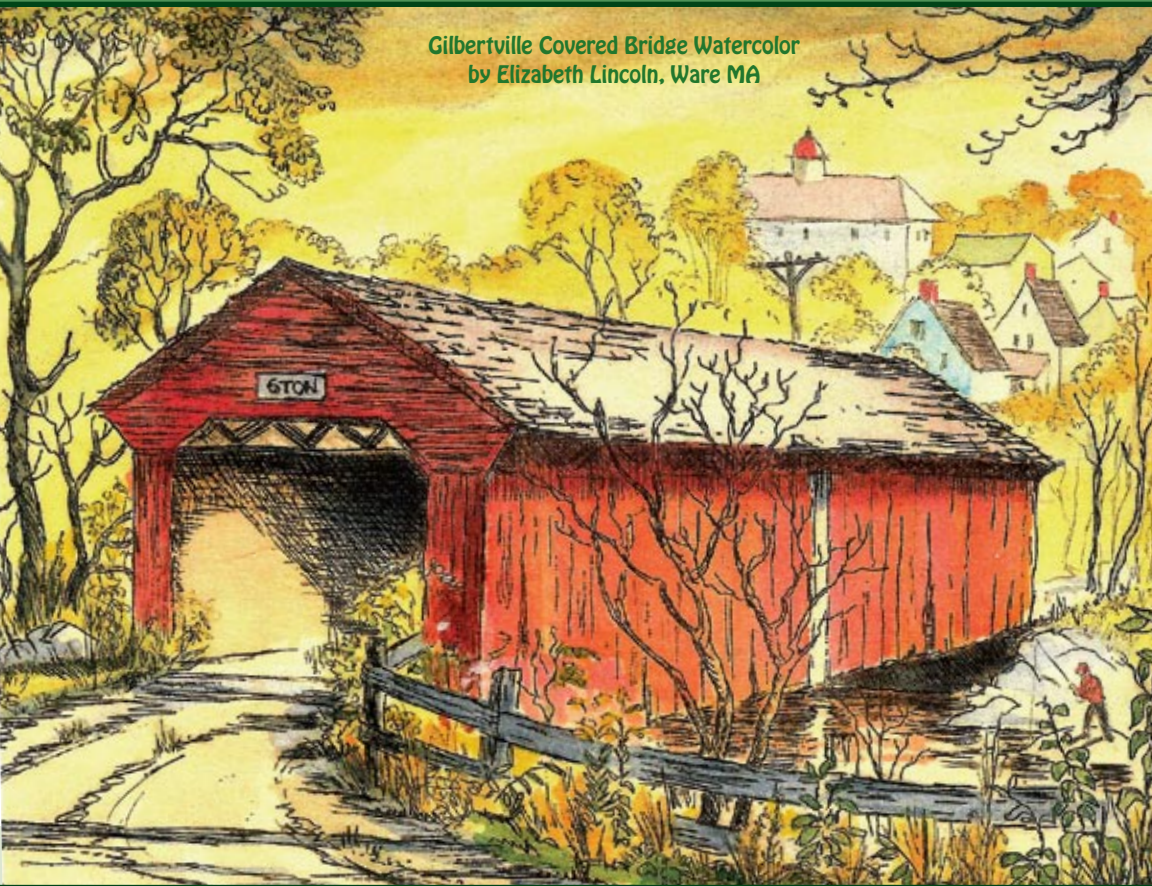


Explore the Quaboag Hills Region

We're classic New England, and proud of it.

**Guide to the
2011 Brimfield
Antique Shows**
 May 10-15
 July 12-17
 Sept 6-11

Gilbertville Covered Bridge Watercolor
by Elizabeth Lincoln, Ware MA



Quaboag Hills

R E G I O N

OF CENTRAL MASSACHUSETTS

Quaboag Hills
 CHAMBER OF COMMERCE
 YOUR REGIONAL BUSINESS RESOURCE

OUR TOWNS:

Belchertown
 Brimfield
 Brookfield
 East Brookfield
 Hardwick
 Holland
 Monson

New Braintree
 North Brookfield
 Palmer
 Spencer
 Wales
 Ware
 Warren
 West Brookfield



*A Delicious Feast
At A Price
You Can Afford!*

Carmella's Italian Kitchen

Sunday 12 noon–9 pm • Thurs. 11 am–9 pm • Fri. & Sat. 11 am–10 pm

55 South Maple St. Route 9, Brookfield

508-867-5475

www.carmellasitaliankitchen.com



table of contents

Welcome2

About Betty Lincoln3

Calendar of Events 4-9

Accommodations..... 10-11

Antiques 12-16

Attractions..... 19-25

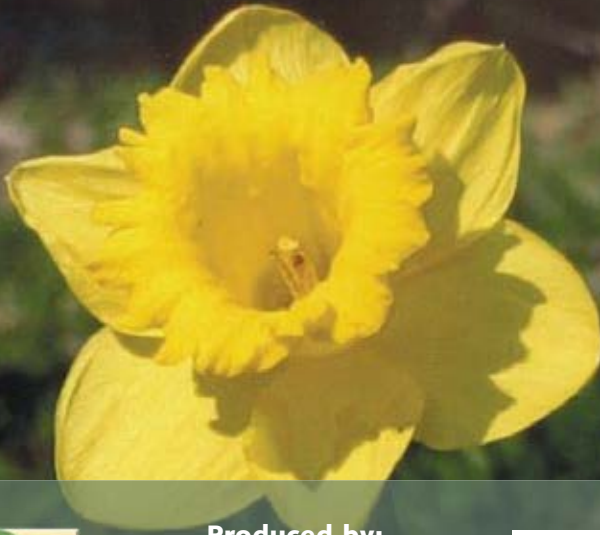
Farms, Orchards & Nurseries26

Restaurants..... 28-29

Services 30-32

Shopping..... 35-36

Special thanks to
Country Bank, Spencer Savings Bank,
and North Brookfield Savings Bank
 for their sponsorship of the Calendar of Events section.



Produced by:
 Quaboag Hills Chamber of Commerce
 & Peg Gorman
 Designed by: Pelton Graphics
 Printed by: Turley Publications



Stimulating economic development through tourism.
 413-283-2418 • www.qhcc.biz • Visit us on Facebook



Daffodil photo by Susie Mulliken

Welcome to the Quaboag Hills Region

We're classic New England,
and proud of it.

Come see the History. First came the native Quaboags and Nipmucs, then the Puritan settlers, then King Philip's War, Ben Franklin's Post Road, the Colonial Revolution, the Industrial Revolution, and even today's high-tech revolution. Artifacts abound, especially at our antique shops and world famous Brimfield Antique Shows.



Perfect for a drive. Curving roads. Stone walls. Majestic maples. Over every rise and around each bend comes a new discovery far from the beaten path. Wander our country roads. Kick back on our village greens. Get to know the Quaboag Hills, and get to know the real New England!

*Your local
hometown newspapers!*

Barre Gazette
The Journal Register
Quaboag Current
The Sentinel
Shopping Guide
The Town Common
Ware River News

Turley 
Publications, Inc.

www.turley.com
800-824-6548

THE CULTURAL CENTER AT EAGLE HILL

A place to connect with the arts and with each other in Central Massachusetts.

Tickets and info: www.thecenterateaglehill.org

About Elizabeth Lincoln



We are pleased to share with you the cover image of a Watercolor by Elizabeth (Betty) Lincoln of Ware, MA.

Mrs. Elizabeth (Betty) Bradford Howe Lincoln, was a long-time Ware artist and teacher. Mrs. Lincoln, a direct descendent of Plymouth Colony leader William Bradford in the 10th generation, was born in Ware on January 10, 1918, daughter of Donald and Josephine (Bradford) Howe of Ware.

She was a graduate of Ware High School, Class of 1935, of Cushing Academy, and Acadia University of Nova Scotia. She also took courses at the former art school, Vesper George, in Boston. While her children were young, Mrs. Lincoln taught art classes in her home for both youth and adults. Later, she was an art instructor at Ware High School, and before retirement worked at Wilbraham-Monson Academy where her husband had taught for 42 years.

She developed an interest in art at a very early age; her varied accomplishments as an artist spanned eight decades. Honored by the Famous Artists School of Westport, Connecticut, her paintings, sculptures, lithographs, tiles and illustrations won much recognition. She often donated pieces to charities, and local institutions. A tireless creator, her motto was, "Work regardless of your mood."

She illustrated her father's noted text: *Quabbin, the Lost Valley* in 1951, as well as six books her husband wrote after his retirement. She published a retrospective of her own works, *Here's Ware and Elsewhere*, as she approached her 90th year. Mrs. Lincoln made countless friends through her love of art. She enjoyed sharing her gift for both the creation and appreciation of her field, and that love enriched the lives of others. Her works will live on in the eyes of following generations.

Join the Celebration!

Ware, Massachusetts • 1761~2011 250th Anniversary



Nationally known as
"The Town that can't be licked!"



EVENT HIGHLIGHTS:

Monday, May 30, 2011
Memorial Day Ceremony & Parade

Saturday, August 6, 2011
Feast on the Street

Sunday, September 4, 2011
Ware 250th Anniversary Gala Parade

www.Ware250.org

calendar of Events

FARMERS MARKETS

May 26 – Oct 13

BELCHERTOWN

*Farmers Market Every Thursday
On the Common
1pm-7pm 413-323-0048*

April 16 – Nov 19

BRIMFIELD

*Farmers Market Every Saturday
at Hitchcock Free Academy
9am-2pm 413-245-9764*

June 19 – Oct 23

HARDWICK

*Farmers Market Every Sunday
On the Common (Rt 32A)
11am-2pm 413-477-6525*

May 19 – Oct 20

NEW BRAintree

*Farmers Market Every Thursday at B&B Farms
1890 Barre Rd RT 67.
3:00-6:30pm 978-365-4027*

May 9 – Oct 31

PALMER

*Farmers Market Every Monday
2150 Main St Amvets Post 74 in Three Rivers section of Palmer
11:00am-3:00pm. 413-586-6947*

June 5 – Oct 22

SPENCER

*Farmers Market Every Saturday at Klem's Store
(117 West Main St RT 9).
9:00am-2:00pm 508-885-2708*

May 7 – Oct

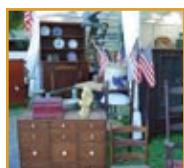
WARE

*Farmers Market Every Saturday
next to CVS lawn (104 West St).
9:00am-12:30pm 413-230-0615*

May 25 – Oct 26

WEST BROOKFIELD

*Farmers Market Every Wednesday
On the Common
3:00-6:30pm*



May 10-15, 2010

BRIMFIELD

*Brimfield Antique Shows
Rain or Shine! See pages 14 for
details QHMA.com*

May 14

PALMER

Town Wide Tag Sale

Maps can be purchased for \$2 at the corner of Converse and Thorndike Streets in Depot Village from 8-12 noon that morning. Call Bob Haveles 413-283-2553 x302 for more information

May 16

WARE

Polish Night at Janine's Frostee

149 East Street, Ware. Come and enjoy an evening of Polish music and food. If it's raining please call for more information 5-8pm 413-967-7950.

May 21

WEST BROOKFIELD

Asparagus & Flower Heritage Festival

10am-4pm on the Town Common. FREE to the Public.
Rain Date May 22

May 21

BRIMFIELD

Town-Wide Tag Sale

Maps will be for sale at Hitchcock Free Academy to bargain hunters for just \$2
8am 413-245-9977

May 21

BELCHERTOWN

Girl Scout Troop 20434 On the Common

9am – 3pm

May 21 and 22

WARE

American Legion Exhibit

12:00 pm - 4 pm featuring military memorabilia and soldiers from Ware. <http://ware250.weebly.com>

May 30

BROOKFIELD

Brookfield Memorial Day Parade

Leaving the Elementary School at 10:00 a.m.
www.brookfieldma.us

May 30

WARE

Memorial Day Parade

Ware salutes the many contributions and sacrifices made by our military culminating with a special monument dedication to Revolutionary War veterans; long overdue!
<http://ware250.weebly.com>

June 4

WEST BROOKFIELD

*A Civil War Living History Encampment
On the Common*

The 15th Mass Volunteer Infantry Re-enactors. 150th Anniversary of the Civil War. 10:00 a.m. to 4:00 p.m.



Country Bank

OUR HOME IS YOUR HOME.

(800) 322-8233 • www.countrybank.com

June 5

MONSON

Return of the Raptors by Tom Ricardi
Birds of Prey Rehabilitation Center
Tom will bring several birds with him, including a turkey vulture and some owls. A special guest will be a Golden Eagle. Keep Homestead Museum, 35 Ely Road.
1:00-3:30pm www.KeepHomesteadMuseum.org

June 6

WARE

Polish Night at Janine's Frostee
149 East Street, Ware. Come and enjoy an evening of Polish music and food. If it's raining please call for more information
5-8pm **413-967-7950.**

June 10, 11, 12

WARE

St. Mary's Carnival on South Street
Polish food, Carnival rides and live music nightly.

June 22

WEST BROOKFIELD

Concert on the Common • FREE
Eddie Forman Orchestra 7-9pm

June 25

WARE

Fireworks at Grenville Park, 73 Church Street

June 25

BELCHERTOWN

Alex's Lemonade Stand On the Common
7am-5pm

June 25 Rain Date 26

MONSON

Fireworks at Quarry Hill School
www.monsonsummerfestinc.com

June 27

WARE

Polish Night at Janine's Frostee, 149 East Street. Come and enjoy an evening of Polish music and food. If it's raining please call for more information.
5-8pm **413-967-7950.**

July 1, 8, 15, 22

BROOKFIELD

Concert on the Common • FREE
7pm

July 2 & 3 Rain or Shine

BELCHERTOWN

250 Anniversary
Picnic Celebration on the Common
9am-9pm <http://belchertown250.blogspot.com/>

July 3

WEST BROOKFIELD

Concert on the Common • FREE
Charlie Lask with the All Star Band – Neil Diamond Tribute
6:30-9pm

July 3

MONSON

Ice Cream Social
Keep Homestead Museum, 35 Ely Road.
1-3:30pm www.KeepHomesteadMuseum.org

July 4

MONSON

Monson Summerfest
www.monsonsummerfestinc.com

July 11

PALMER

Antique Truck Show • Free
Alvin Rondeau's Dairy Bar, 1300 Ware Road
Noon-3pm For more information **(413) 283-5281**

July 12-17

BRIMFIELD

Brimfield Antique Shows
Rain or Shine! See pages 14 for details **QHMA.com**



July 13

WEST BROOKFIELD

Concert on the Common • FREE
West Brookfield • A Ray of Elvis 7-9pm

July 17

BELCHERTOWN

The Belchertown Cruisers Car Show
9am-4pm

July 18

WARE

Polish Night at Janine's Frostee
149 East Street. Come and enjoy an evening of Polish music and food. If it's raining please call for more information. 5-8pm **413-967-7950**.

July 19th

BRIMFIELD

Concert on the Common • FREE
Premier Jazz/Swing – The Jazz/Swing Band's repertoire features popular swing tunes of the 1930s to contemporary swing of today. Their music ranges from swing to bebop, Dixie, ballads, Latin and light rock. (In case of rain, concerts will be held at Hitchcock Free Academy) 2 Brookfield Road. 6:30 - 8:00pm

July 20

WEST BROOKFIELD

Concert on the Common • FREE
Changes in Latitudes - Jimmy Buffet Tribute
7-9pm

July 26

BRIMFIELD

Concert on the Common • FREE
Dixieland Stomp – High energy, foot stomping, entertainment combining humorous lyrics & just plain fun. All mixed together for a fun filled time for all from 8 to 80. The band specializes in music of Louis Armstrong, New Orleans four beat style & up beat Chicago tempos. Thanks Country Bank for Savings! (In case of rain, concerts will be held at Hitchcock Free Academy) 2 Brookfield Road. 6:30 - 8:00pm

July 27

WEST BROOKFIELD

Concert on the Common • FREE
Victory Band
7-9pm

July 28th, Aug 4, 11 & 18

BELCHERTOWN

The Community Band Concerts
FREE In case of Rain Chestnut Hill School auditorium
7-9pm

July 30

WARE

Annual Car Show, Janine's Frostee • Free
149 East Street.
10am-2pm email: Info@janinesfroste.com.

August 2

BRIMFIELD

Concert on the Common • FREE
Radio Ranch – A hometown favorite returns once again. This is Country Music at its finest, with acoustic & bass guitars, drums as well as terrific harmonies. These tunes will get your feet tapping & your fingers snapping. (In case of rain, concerts will be held at Hitchcock Free Academy) 2 Brookfield Road. 6:30 - 8:00pm

August 3

WEST BROOKFIELD

Concert on the Common • FREE
Blind Tiger Swing Posse
7-9pm

August 6 Rain date August 7

WARE

Feast on the Street
Ware hosts the biggest supper around! All ages welcome! Enjoy strolling Barbershop Quartet, band and dancing. Tickets required 5:00 - 8:00pm
<http://ware250.weebly.com/feast-on-the-street.html>



Your Bank for Life.



For more than 125 years we've been helping our neighbors achieve their goals.



SPENCER SAVINGS BANK
—Your Bank For Life.—

800.547.2885 • spencersavingsbank.com

August 7

MONSON

Indigo Jazz Quintet Concert on the Lawn
Keep Homestead Museum, 35 Ely Road
1:00-3:30pm www.keepphomesteadmuseum.org

Aug 8

WARE

Polish Night at Janine's Frostee
149 East Street. Come and enjoy an evening of Polish music and food. If it's raining please call for more information
5-8pm **413-967-7950.**

August 10

WEST BROOKFIELD

Concert on the Common • FREE
Billy Goodspeed Band
7-9pm

August 19 & 20

HARDWICK

Hardwick Community Fair
"The Oldest Fair in the United States"
www.hardwickfair.com

August 20

PALMER

Nostalgia Day
Rain Date August 21 • Legion Field, Behind Converse Middle School, Converse Street

August 27 & 28

BELCHERTOWN

Saint Francis Church Tag Sale
9am-6pm

Aug 29

WARE

Polish Night at Janine's Frostee
149 East Street. Come and enjoy an evening of Polish music and food. If it's raining please call for more information
5-8pm **413-967-7950.**

September 2,3,4 & 5

SPENCER

122nd Annual SPENCER FAIR
LABOR DAY WEEKEND at Spencer Fairgrounds • Great Family Entertainment • White Bengal Tiger Show • The Flying Pages • Demolition Derby • FMX Motorcycle Show, and MORE
www.spencerfair.org

September 4

MONSON

Preserving your Harvest with Daniel Staub.
Methods of preserving the results of your garden, including drying and canning. Keep Homestead Museum, 35 Ely Road.
www.keepphomesteadmuseum.org



North Brookfield SAVINGS BANK

NORTH BROOKFIELD - BELCHERTOWN
WEST BROOKFIELD - PALMER

toll free: 866-711-6272
www.banknbsb.com

September 4

WARE

Gala Parade
Ware rolls out the red carpet with bands, floats, balloons – all 250 years' worth! Fun for the whole family!
Begins 1 p.m. at South Street. <http://ware250.weebly.com>

Sept 3

PALMER

Car Show 11am-3pm
Alvin Rondeau's Dairy Bar, 1300 Ware Road
FREE to attend. For more information **(413) 283-5281**

September 4

WARE

Fireworks Display
Join us at historic Grenville Park. Beginning at dusk, come enjoy food and music and FIREWORKS! Family fun for all!
<http://ware250.weebly.com>



September 6-11

BRIMFIELD

Brimfield Antique Shows
Rain or Shine! See pages 14 for details QHMA.com

September 22

BELCHERTOWN

Fireworks
7:30pm Chestnut Hill Community
www.belchertownfair.com/new2/main.htm

September 23,24 & 25

BELCHERTOWN

Belchertown Fair On the Common
Friday • 4:00pm - 10:00pm
Saturday • Parade 10am • Midway 12-10pm
Sunday • 12:00 - 6:00pm
www.belchertownfair.com/new2/main.htm

October 1

BRIMFIELD

Third Annual Brimfield Antique Auto Show

Heart-O-the-Mart Antique Show Grounds
Rt. 20, Brimfield, MA 01010

Antique cars, muscle cars, classic trucks, street rods, custom cruisers, and classic imports are all welcome; over 25 categories, 75 trophies, and 3 best-in-show. There will be music, food, and entertainment at this special event benefiting Hitchcock Free Academy. Contact Information for Auto exhibitors:

413-544-1644; general info **413-245-9977**

10 AM - 4 PM. Rain date: Sat, Oct 8, 10 AM - 4 PM

Oct 1 and 2

Back Road Artists Tour

Come and discover the artists of central Massachusetts. Through a self-guided tour of the beautiful backroads of six rural New England towns, we invite you to visit the studios of local artists and learn more about their crafts.

10am-5pm www.backroadsstudiotour.com

October 2

MONSON

Myra's Mosaic Buttons A Button Program by Jacquie Hatton, KHM staff

Jacquie Hatton will present an in-depth program on the mosaic buttons on display at the museum. Keep Homestead Museum, 35 Ely Road. www.KeepHomesteadMuseum.org

October 8

BROOKFIELD

33rd Annual Apple Country Fair

The quintessential country fair celebrates autumn in New England with locally-produced foods and crafts, handmade gifts and wares, a quilt raffle, live music, children's games and of course, apple pie! On the scenic Brookfield Town Common. A True New England Event! 10am to 4pm • Rain or Shine

For more information call **(508) 867-9553** or visit www.applecountryfair.com

Sponsored by the Brookfield Community Club

October 24

WARREN

On the Town Common

Free horse drawn hay rides, face painting, games, refreshments, and prizes in four different categories for those who enter their carved pumpkins. We also provide train rides with the Spencer Savings Bank Safari Train. 6-8 pm. Rain Date October 25.

November 6

MONSON

Wool, from Sheep to Sweater

Rebecca Beall from Old Sturbridge will demonstrate preparation of wool, dyeing it, spinning into yarn and knitting. Keep Homestead Museum, 35 Ely Road.

www.KeepHomesteadMuseum.org

November 6

WEST BROOKFIELD

Handcrafts & Collectables Craft Show

Indoor Exhibits at Salem Cross Inn. Admission \$4.00, Children under 10 Free. 10am - 3pm **508-867-2345** or

www.salemcrossinn.com

Dec 3 and 4

NEW BRAINTREE

June's Bakeshop Open House

135 Pierce Road

junesbakeshop.com

December 4

MONSON

Holiday Open House

Keep Homestead Museum, 35 Ely Road

www.KeepHomesteadMuseum.org

December 4

BRIMFIELD

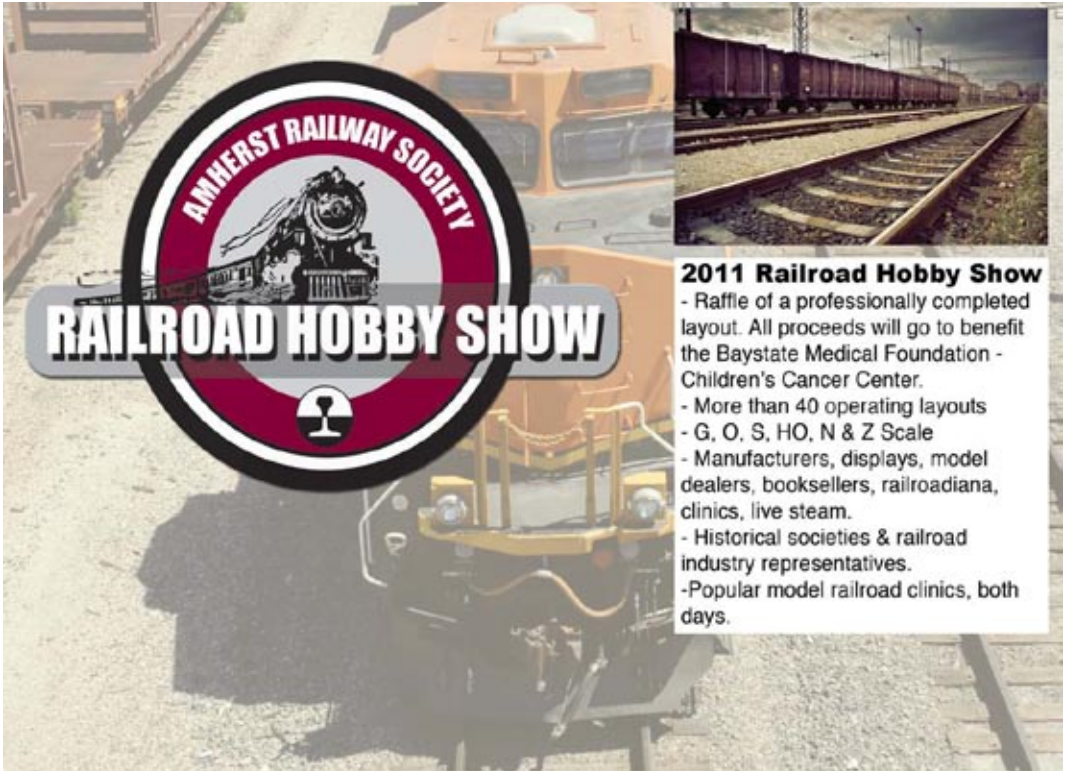
Artist Open Studio Trail

Visit www.hitchcockacademy.org in November to find out where Hitchcock Free Academy is located on the Artist Open Studio Trail. Artists set up tables with their works at Hitchcock (Sunday only), and many others open their own studios for the trail both Saturday and Sunday. Contact HFA for information on table space or other details as December approaches:

(413) 245-9977 or visit our website. 10am - 4pm, FREE.



VISIT US AT WWW.SPENCERFAIR.ORG



2011 Railroad Hobby Show

- Raffle of a professionally completed layout. All proceeds will go to benefit the Baystate Medical Foundation - Children's Cancer Center.
- More than 40 operating layouts
- G, O, S, HO, N & Z Scale
- Manufacturers, displays, model dealers, booksellers, railroadians, clinics, live steam.
- Historical societies & railroad industry representatives.
- Popular model railroad clinics, both days.

January 28th & 29th, 2012

Eastern States Exposition

1305 Memorial Avenue

West Springfield, MA 01089

Better Living Center - Young Building - Stroh Building - Mallary Complex

Saturday: 9 am - 5 pm | Sunday 10 am - 5 pm

Under 16 National Layout Building Contest
Please visit us online at:
www.RailroadHobbyShow.com
for details.

For more information or to join the Amherst Railway Society
Please visit us online at:
www.AmherstRail.org



Follow us on Facebook at:
<http://www.facebook.com/AmherstRail.org>



accommodations

Bed & Breakfast

BRIMFIELD

YANKEE CRICKET BED & BREAKFAST

106 Five Bridge Road
Brimfield, MA 01010

(413) 245-0030 Fax (413) 245-0098

www.yankeecricket.com

Email: wsimonic@charter.net

A reproduction colonial offering a quiet stay close to
Brimfield, Sturbridge and the Brookfields.

BROOKFIELD

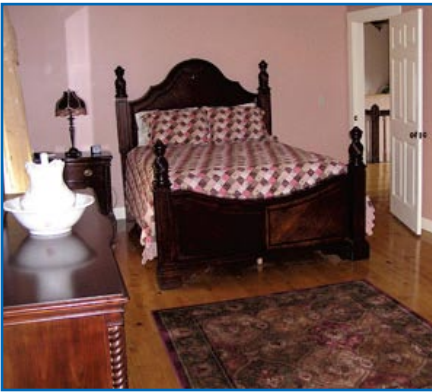
THE BROOKFIELD INN

8 West Main Street, Route 9
Brookfield, MA 01506

(508) 867-3111

www.thebrookfieldinn.com

Experience the comfort of home while enjoying hospitality
geared to your relaxation. Whether you plan to stay for a
night or for days, we invite you to discover the charm and
warmth of our B&B.



Campgrounds

MONSON

SUNSETVIEW FARM CAMPING AREA ♿

57 Town Farm Road, Monson, MA 01057

(413) 267-9269 Fax (413) 267-3163

www.sunsetview.com

Email: camp@sunsetview.com

RV's, trailers and tents can be accommodated on grass or
wooded sites with hookups. Pool, recreation hall, ball fields and
modern bathrooms.



Southbridge
HOTEL & CONFERENCE CENTER

203 Guest Rooms

Banquet Facilities

Health Club

Conference &

Meeting Rooms

14 Mechanic St. Southbridge, MA

www.southbridgehotel.com

508-765-8000

Hotels, Motels & Inns

BRIMFIELD

NEW ENGLAND MOTEL & ANTIQUE MARKET

30 Palmer Road, Brimfield, MA 01010
(413) 245-3348 Fax (508) 345-3784
www.antiques-brimfield.com
 Email: nemotelbrimfield@charter.net
 Antiques and collectibles shows. Food court and on-site parking. ATM and camping sites available.

LUDLOW

COMFORT INN & SUITES ♿

321 Center Street, Ludlow, MA 01056
(413) 589-9300 Fax (413) 547-0488
www.pvhg.com • Email: cmfoster@pvhg.com
 The Comfort Inn & Suites Ludlow Hotel provides 71 guest rooms and can accommodate up to 30 people in our over 500 square foot conference room for your meeting or reception.

PALMER

WEDGEWOOD MOTEL

1430 Park Street, Route 20
 Palmer, MA 01069
(413) 283-4501 Fax (413) 283-2214
www.wedgewoodmotel.rylatechnologies.com
 Exit 8 off Mass Pike, 1.5 miles east of Palmer. efficiency and family units, cable T.V., weekly rates, AC, central heating, individual control.



COPPER LANTERN MOTOR LODGE

FREE WI-FI
 All Rooms Non-Smoking
 Nightly & Weekly Rates

RESERVATIONS (508) 867-6441
www.CopperLanternMotorLodge.com

184 W. Main St. (Route 9)
 West Brookfield, MA 01585

Visa, AMEX, MasterCard, Discover
Your Hosts The Leland Family Since 1963

SOUTHBRIDGE

SOUTHBRIDGE HOTEL & CONFERENCE CENTER

14 Mechanic St., Southbridge, MA 01550
(508) 765-8000 Fax (508)765-7600
www.southbridgehotel.com

STURBRIDGE

STURBRIDGE COUNTRY INN

530 Main Street
 Sturbridge, MA 01566
(508) 347-5503
www.sturbridgecountryinn.com
 Email: info@sturbridgecountryinn.com

WEST BROOKFIELD

COPPER LANTERN MOTOR LODGE

184 West Main Street, P.O. Box 1138
 West Brookfield, MA 01585
(508) 867-6441
www.CopperLanternMotorLodge.com
 Free WI-Fi. All rooms non-smoking and have microwaves & refrigerators. Efficiency units also have kitchenettes. Free local calls. Well-behaved dogs welcome. Cable T.V. A/C. Nightly & weekly rates. Located on 7 acres of grounds along the Quaboag River. Near Salem Cross Inn.

COMFORT
is what we do at the
Comfort Inn & Suites

Spacious Rooms, Sunshine Breakfast,
 Heated Indoor Pool, Fitness Room,
 Wireless Internet Access, and our Function
 room accommodates up to 40 people.

Easy access from the Mass Pike Exit 7

The Comfort Inn & Suites
 321 Center Street, Ludlow, MA
www.pvhg.com • 413-589-9300

BRIMFIELD

BRIMFIELD ACRES NORTH

Route 20, Brimfield, MA 01010
(413) 245-9471 or (413) 427-0311
Fax (508) 754-4185
www.brimfieldacresnorth.com
Email: brimfield1@aol.com

Visit our Postcard & Ephemera Center. For information on one of our shows or group shop, please call 1-508-754-4185.

BRIMFIELD.COM

106 Five Bridge Road
Brimfield, MA 01010
(413) 245-0030
www.brimfield.com
Email: wsimonic@charter.net

J&J PROMOTIONS

P.O. Box 385, Route 20
Brimfield, MA 01010
(413) 245-3436 or (978) 597-8155
www.jandj-brimfield.com
Antiques and collectibles shows. Brimfield's largest!
On-site parking \$7.

HERTAN'S ANTIQUE SHOWS

Mill Lane Road, Brimfield, MA 01010
(860) 763-3760 or
(413) 626-0927 (during shows)
www.hertansbrimfield.com
Shop over 200 booths in our park-like setting;
free admission, no pre-selling, outdoor cafe.

MAY'S ANTIQUE MARKET, INC.

10 Palmer Road, P.O. Box 416
Brimfield, MA 01010
(413) 245-9271 Fax (413) 245-9509
www.maysbrimfield.com

THE MEADOWS ANTIQUE SHOWS

P.O. Box 374, Brimfield, MA 01010
(413) 245-9427 or (413) 245-3215
Fax (413) 736-0362
www.brimfieldantiqueshow.com
Email: pni@earthlink.net

NEW ENGLAND MOTEL & ANTIQUE MARKET

30 Palmer Road, Brimfield, MA 01010
(508) 347-2179 or (413) 245-3348
Fax (508) 347-3784
www.antiques-brimfield.com
Email: nemotelbrimfield@charter.net
400 dealers, 3 buildings, Food Court, Public Parking,
ATM, Shipping.

WEST BROOKFIELD

MILLER ANTIQUES ON THE COMMON

15 School Street
West Brookfield, MA 01585
(508) 867-2679
Open by Appointment or Chance – Antiques and Architectural
Materials, Entire Dismantled Houses & Barns. Restoration
Services Available.

NORTH BROOKFIELD

FINDERS KEEPERS ANTIQUES

228 Main St, (Rts. 67 & 148)
North Brookfield, MA
(508) 867-0115
www.FindersKeepersAntiques.net
Specializing in glassware and china, crockery
and pottery, Corning, Corelle, Pyrex and Fire-King.

SHOP BRIMFIELD'S
WORLD FAMOUS OUTDOOR
ANTIQUE & COLLECTIBLE SHOWS
2011
at **NEW ENGLAND MOTEL**

FIND BRIMFIELD'S BEST BUYS
Furniture • Jewelry • Art • Silver • Porcelain • Lighting
Shabby Chic • Prints • Majolica • Vintage Clothing
Accessories • Pottery • Outdoor Decor • Tile • Primitives

OVER 400 DEALERS - 3 DEALER PAVILIONS
OPENS WED. 6 AM
MAY 11-15 WED.-SUN.
JULY 13-17 WED.-SUN.
SEPT. 7-11 WED.-SUN.
ADMISSION OPENING DAY ONLY \$5/PARKING CENTRAL TO ALL FIELDS \$5 • SHIPPING • ATM

Bring Your Appetite!
LOOK FOR OUR GREEN AND GOLD UMBRELLAS AT OUR FOOD COURT
AND YOU WILL FIND OUR FIELD IN THE CENTER OF THE MARKET.
WWW.ANTIQUES-BRIMFIELD.COM
NEMOTELBRIMFIELD@GMAIL.COM
Celebrating our
25th Anniversary 
Marie Doldorian **Campsites by**
Tel. 508-347-2179 **Reservation**



2011
ANTIQUE &
COLLECTIBLES
SHOWS

May 13-14
July 15-16
Sept. 9-10

NOTE NEW SHOW HOURS

Friday: 8 a.m. – 4 p.m. • \$5 admission
Saturday: 9 a.m. – 4 p.m. • Free admission
On-site parking \$7 • No Pets Please • Rain or Shine
A Reed Family Tradition for 50 Years



J & J Promotions

P.O. Box 385 - Route 20 • Brimfield, Mass 01010-0385

(413) 245-3436 • (978) 597-8155

E-mail: jjbrimfld@meganet.net

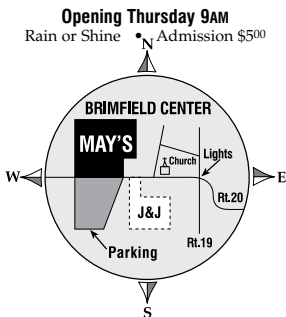
Website: www.jandj-brimfield.com

BRIMFIELD

MAY'S ANTIQUE MARKET

2011 Show Dates

May 12-14 • July 14-16 • Sept. 8-10



MAY'S ANTIQUE MARKET, INC.
Route 20, P.O. Box 416, Brimfield, MA 01010

www.maysbrimfield.com
413-245-9271 • Fax: 413-245-9509

One of Brimfield's Best and Biggest Antique Shows
Junco Mgmt. Services, Inc.

BRIMFIELD

THE MEADOWS



2011 Show Dates

May 10-15 • July 12-17 • September 6-11

Visit Us On-line at

www.brimfieldantiqueshow.com

Opens Tuesday 6 a.m.

Over 200 Dealers in Antiques and Collectibles Only
Central Parking • Concession Stand On-site
No Pets Please • Rain or Shine

The Meadows Antique Shows, Inc.

Phone (413) 245-9427 or (413) 245-3215

P.O. Box 374 • Brimfield • MA • 01010

Fax (413) 736-0362

email: pni@earthlink.net



Brimfield, Mass.

2011 – ONE DAY SHOWS

May 10th

Tuesday 1 PM - 5 PM

July 12th

Tuesday 1 PM - 5 PM

September 6th

Tuesday 1 PM - 5 PM

Admission \$5 • RAIN OR SHINE

Antique Shop

Open October through April
Brimfield Acres North, Inc.

413-245-9471 or 413-427-0311

fax (508) 754-4185

email: brimfield1@aol.com



show schedule

2011 BRIMFIELD SHOW DATES • TUESDAY THRU SUNDAY

May 10-15 • July 12-17 • Sept 6-11

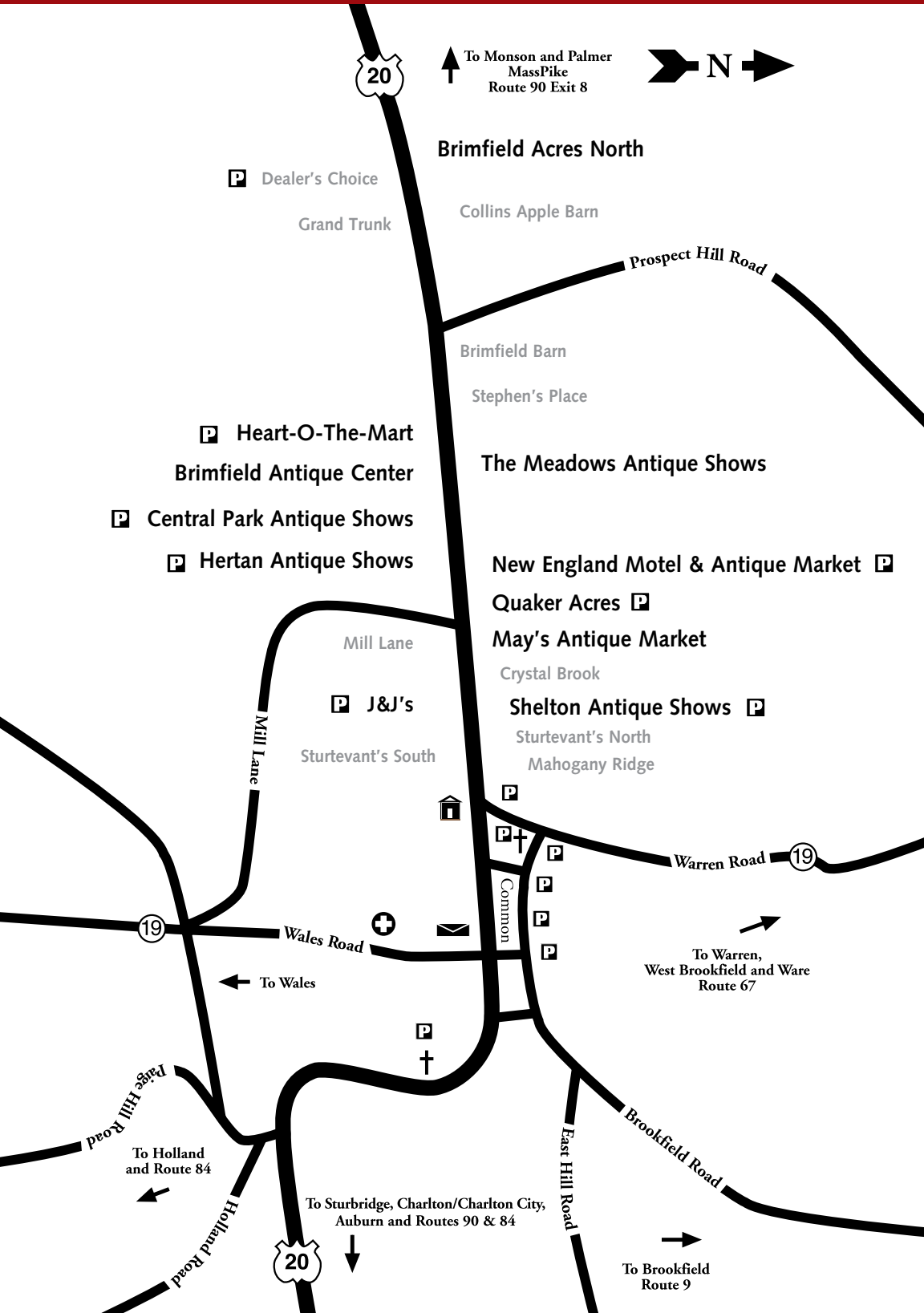
open ■ closed □

OPERATOR	OPEN TIME	T	W	TH	F	S	SU
Brimfield Acres NorthTues. 1 p.m. (413) 245-9471 or (413) 427-0311		■	□	□	□	□	□
Central Park Antique Shows 6 a.m. (413) 245-4674 (during shows) or (413) 596-9257		■	■	■	■	■	■
Faxon's Midway 6 a.m. (508) 347-3929		■	■	■	■	■	■
Heart-o-the-Mart 9 a.m. (413) 245-9556		□	■	■	■	■	■
J&J Promotions Fri. 8 a.m./Sat. 9 a.m. (413) 245-3436 or (978) 597-8155		□	□	□	■	■	□
Hertan's Antique Shows Wed. noon/Th. Sun. 6 a.m. (413) 626-0927 (during shows) or (860) 763-3760		□	■	■	■	■	■
May's Antique Market 9 a.m. (413) 245-9271		□	□	■	■	■	□
New England Motel & Antique Market 6 a.m. (413) 245-3348		□	■	■	■	■	■
Quaker Acresdaybreak (413) 245-6185		■	■	■	■	■	■
Shelton Antique Showsdaybreak (413) 245-3591		■	■	■	■	■	■
The Meadows Antique Shows, Inc. 6 a.m. (413) 245-9427 or (413) 245-3215		■	■	■	■	■	■

2012 show dates May 5-13 • July 10-15 • Sept 4-9



	Town Hall/Police Station
	Fire Department/Ambulance
	Post Office
	Parking
	Public Telephone
	Churches
	ATM
	Shipper
	Restrooms & Handicapped
	Camping
	Food



To Monson and Palmer
MassPike
Route 90 Exit 8



Brimfield Acres North

P Dealer's Choice

Grand Trunk

Collins Apple Barn

Prospect Hill Road

Brimfield Barn

Stephen's Place

P Heart-O-The-Mart

Brimfield Antique Center

The Meadows Antique Shows

P Central Park Antique Shows

P Hertan Antique Shows

New England Motel & Antique Market **P**

Quaker Acres **P**

May's Antique Market

Mill Lane

Crystal Brook

P J&J's

Shelton Antique Shows **P**

Sturtevant's South

Sturtevant's North

Mahogany Ridge

Mill Lane



To Wales

To Warren,
West Brookfield and Ware
Route 67

To Holland
and Route 84

To Sturbridge, Charlton/Charlton City,
Auburn and Routes 90 & 84

To Brookfield
Route 9

Purge Hill Road

Holland Road

Common

East Hill Road

Brookfield Road

Wales Road

Warren Road

directions & show information

DIRECTIONS TO BRIMFIELD

From North: Travel south on 1-91 to Mass Pike Entrance. Take the Mass Pike East to Exit 8 (Palmer). Turn right after the toll booth and left at the first light onto Route 20 East. Continue east about 8 miles to the shows.

From South: Travel north on 1-91, to 291 East, to Mass Pike entrance (Exit 6). Take the Mass Pike East to Exit 8 (Palmer). Turn right after the toll booth and left at the first light onto Route 20 East. Continue east about 8 miles to the shows. Or you may consider 1-84 to Sturbridge, then Route 20 West (about 7 miles) to Brimfield.

From East and North: Take 495 south to the Mass Pike. Take the Mass Pike west to Exit 9 (Sturbridge). Turn right after the toll booth onto Route 20 West. Continue west about 7 miles to the shows.

To avoid traffic tie-ups at Mass Pike exits 8 and 9, you may exit sooner and take Route 19 or Route 32 from southerly directions, or consider Routes 32 or 67 from the north.

Tour Bus Accommodations: Tour bus parking is available at several locations within the one-mile stretch of Route 20 where the shows are located.



Hertan's Antique Shows

Free Admission - No Pre-selling

Over 150 Outstanding
Dealers

Open Wednesday Noon to Sunset
Also open Thursday to Sunday
From Sunrise to Sunset

David Lamberto
Owner-Operator
860-763-3760
413-626-0927



www.hertansbrimfield.com

SHOW INFORMATION

The Brimfield shows run three times a year – May, July and Sept. and are open for a six day period, Tuesday through Sunday. Some operators open all days and others are open for a few days during this period.

Admission: Some shows charge admission, the fee is around \$5.

Parking: There is plenty of off street parking available at costs ranging from \$3.00 – \$10.00. Parking is prohibited on the roadside and tow trucks do patrol the area, so park with caution.

Food: There are plenty of food vendors located on all of the fields offering a variety of food items. There are also a few local restaurants in town where you can sit and enjoy dining.

Restrooms: Portable toilets are set up on all fields.

Weather: The weather in New England is very unpredictable. The shows run rain or shine so come prepared.

Cash: The Country Bank has an ATM in Brimfield which is located on Main Street. There are also several others located about 10 miles away, in the towns of Sturbridge, Monson, Palmer and Warren. Also, several of the field operators have ATMs located on their property.

Pets: *It's not a good idea to bring pets. Many operators prohibit pets on their fields and it's hazardous to keep animals in cars.*

Laundromat: Located in downtown Warren and Ware.

Lost & Found: Contact the Brimfield Police Station (413) 245-3442 after shows.

Emergencies: call 911

Looking for a GPS address to Brimfield use:
Brimfield Town Hall, 23 Main Street
Brimfield MA 01010

The location is approximately 1000 feet from the beginning of the Brimfield Antique Shows.



LINK
WITH
US

(413)
245-0030

*Richard Gerstein, MD,
Medical Director, and
Richard Romano, MD,
Emergency Department
Physician, Baystate
Mary Lane Hospital*



From minor emergencies to life-threatening situations we're always here, always ready.

At Baystate Mary Lane Hospital, the best emergency care is right here in our community, 24-hours a day.

Our emergency department physicians are board certified in emergency medicine. Together with our experienced nursing staff, you and your loved ones will always be in the best of hands. From minor emergencies to life-threatening situations, Baystate Mary Lane Hospital provides the quick response you can depend on, with fast access to Baystate Medical Center in Springfield if needed.

For more information about our emergency services, please call 413-967-2488.

Baystate  **Mary Lane Hospital**

baystatehealth.org/mlh

Standing Behind You!



Peace of mind is knowing that when it comes to your family's health, a team of professionals will always be standing behind you every step of the way.

That's Wing Memorial – a community Hospital and five Medical Centers dedicated to providing the highest standards of care in a friendly comfortable environment close to home.

And, as Wing stands behind your family, standing behind us are the resources of UMass Memorial Health Care—a world class teaching hospital and health network providing the widest range of specialized care available.

In Your Community, For a Lifetime of Care

Belchertown, Ludlow, Monson, Palmer, Wilbraham, Quaboag Valley
VNA & Hospice, Griswold Behavioral Health Center

413-283-7651



Wing Memorial

Hospital and Medical Centers

A Member of UMass Memorial Health Care



www.winghealth.org

BELCHERTOWN

TOWN HALL

2 Jabish Street
Belchertown, MA 01007
(413) 323-0400
www.belchertown.org

MILL VALLEY SNOWMOBILE CLUB

www.millvalleysnowmobile.org

EVERGREENE GOLF

80 Ware Road (Route 9 East)
Belchertown, MA 01007
(413) 323-6399

18 hole miniature golf course, lighted 18 station driving range, fully handicapped accessible, lessons, club house serving hotdogs, soft drinks and **Snow's homemade ice cream.**

THE STONE HOUSE MUSEUM AND
BELCHERTOWN HISTORICAL ASSOC.

20 Maple Street, P.O. Box 1211
Belchertown, MA 01007
(413) 323-6573

www.stonehousemuseum.org

The Belchertown Historical Association has an archive in the Stone House Museum that has over one hundred boxes of historical documents and records that give a chronological history of Belchertown from its beginning in the early 1700's up to the present day. The gathering in of these materials started from the day the Association was formed in 1903.

QUABBIN VISITOR CENTER

485 Ware Road (Route 9)
Belchertown, MA 01007
(413) 323-7221

www.mass.gov/dcr/parks/central/quabbin.htm

BRIMFIELD

TOWN HALL

23 Main Street
Brimfield, MA 01010
(413) 245-4100

www.brimfieldma.org

Built in 1878, Stick Style, with clapboard, shingle and mock half-timbering on exterior, with roof, cupola and corner tower. On the common are monuments commemorating Civil War and World War I veterans. Stop and read the two markers denoting the Steerage Rock, an Indian stronghold in the 1600s.

BRIMFIELD STATE FOREST

Dean Pond Road
Brimfield, MA 01010
(413) 267-9687

This rolling, heavily forested property has over 20 miles of roads and trails and is used primarily for hiking, walking, horseback riding and fishing. Dean Pond Recreation Area, located in the western portion of Brimfield State Forest, has a pavilion, comfort station, 100 linear feet of beach and picnic facilities. The roads are popular for equestrian use and related special events.

CONGREGATIONAL MEETING HOUSE

(508) 245-7162

Built in 1848, a Greek Revival building with a three-bay recessed entry and Doric columns. Services Sunday mornings.

HITCHCOCK ACADEMY
COMMUNITY CENTER

2 Brookfield Road, Brimfield, MA 01010-0155
(413) 245-9977

www.hitchcockacademy.org

Greek Revival/Italianate style. Established in 1855 to provide free high school education to Brimfield youth. Now a community center.

BROOKFIELD

1675 KING PHILIP'S WAR MEMORIAL

A state marker on Route 9, at the boundary of Brookfield and West Brookfield tells the grim story of Brookfield's early years.

www.westbrookfield.org

BROOKFIELD TOWN HALL

6 Central Street, Brookfield, MA 01506
(508) 867-2930
www.brookfieldma.us

THE ELM HILL FARM NATIONAL
HISTORIC DISTRICT

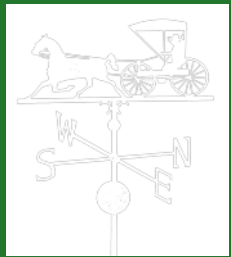
Located on East Main Street. Established in the 1780s by Amasa Blanchard, a carpenter and businessman, the 1,200 acres remained as a family farm until recently when 1,000 acres were given to the Massachusetts Audubon Society. The balance became the Blanchard Means Foundation working in the interest of people with special needs. An Italianate Victorian farm it's made up of several homes and a large barn complex. Elm Hill Farm was best known as the home of "Elsie the Cow," she was born here and raised by her owner, Dr. Oliver Means.

www.brookfieldma.us

BROWSE THE BROOKFIELDS and BEYOND

Take a picturesque ride through
the Brookfields and enjoy the
unique character of our area!

Contact us at:
P.O. Box 782
East Brookfield, MA 01515
www.browsethebrookfields.com



Welcome Foodies!

Sit, Relax, Enjoy!

Where locals bring their guests!



Welcome to E.B.Flatts
Opened On Earth
February, 2006

Serving:

Sun thru Wed until 1:45 pm

Thurs, Fri, Sat serving 'til 8:45 pm

E.B.Flatts

245 W. Main (Rt 9) East Brookfield
508-867-6643 ebflatts.com



FINDERS KEEPERS ANTIQUES

Specializing in

glassware and china, crockery
and pottery, Corning, Corelle,
Pyrex and Fire-King.

We offer a selection of furniture,
jewelry, lighting, paintings,
prints and more!

228 Main St, (Rts. 67 & 148)
North Brookfield, MA

(508) 867-0115

www.FindersKeepersAntiques.net

AUNT LIZZIE'S WHATNOT SHOP

VINTAGE, ANTIQUE & CONTEMPORARY
MERCHANDISE OF ALL KINDS!

197 North Main St.,
North Brookfield, MA 01535
(508) 867-7791

auntlizzieswhatnotshop.blogspot.com

There's something
for Everyone!

Thurs. & Fri. 10-2 • Sat. 10-3

Lyon Iron

Owned and operated by
Rob and Ruth Lyon

Purveyors of fine antique iron
for Hearth and Home, offering
an outstanding selection of
fireplace furniture, cooking
utensils, and door hardware.



49 Snow Road
West Brookfield, MA 01585
(508) 867-7316

info@lyoniron.com
www.lyoniron.com



Monday - Saturday • 8am - 8pm
Sunday • noon - 6pm

Come in for a freshly brewed organic
coffee, tea or cocoa with a delicious
bowl of homemade organic
vegetarian soup, muffin or other
goodie from TipTop's kitchen.

(508) 867-0460

8 Central Street • Brookfield, MA 01506

WWW.

BRIMFIELD

.com

**LINK
WITH
US**

(413)
245-0030



POST & BOOT

House & Garden Accents



- Affordable antiques
- Birdhouses and feeders
- House number plates

78 E. Main Street (Route 9)
On the Common in
West Brookfield, MA.
(508) 867-5934

Pleasant Street Pub & Pizza at Ye Olde Tavern

Brick Oven
Pizza &
more!



Take out available (508) 867-9709
www.westbrookfieldtavern.com

Our thin crust pizzas are hand-stretched and baked in a custom built wood fired brick oven at temperatures which reach 900 degrees

Dinner specials Saturday and Sundays!

*Dinner served
7 nights a week
starting at 5:00pm*

Corner of Pleasant St.
& East Main St.
West Brookfield
MA 01585



Open
7 Days
10-6

"We Buy Books."

80,000 out of print and rare books!
"We travel for book collections and Estates."

(508) 867-8705

Toll Free 1-877-809-2665

80 W. Main Street On Rt. 9, West Brookfield, MA



the
Purple Onion
furniture & gift barn

Quality Country Furniture and Accessories

- Pottery - Gardenware
- Antique Reproduction
Lighting & Chandeliers
- Art Prints - Folk Art

(508) 867-9400

105 North Main Street, West Brookfield, MA



**We Make
House
Calls!**

Specializing in Clock sales and
Clock repair. A Howard Miller and
Ridgeway Authorized Service Center.

www.theclockbarn.com

508-867-7475

44 Spring Street • North Brookfield, MA



BROOKFIELD ORCHARDS

APPLES

Serving Hot Apple
Dumplings w/Ice cream

Visit Our Unique Country Store:

Vermont Cheddar Cheese, Cider, Honey, Preserves,
Fancy Baskets & Crafts, Candles, Maple Syrup,
Apple Pies & Dumplings, Antiques & Collectibles

Open 7 Days 9-5

(508) 867-6858 • (877) 622-7555

12 Lincoln Road, North Brookfield, MA
www.browsethebrookfields.com
email: brookfieldo@aol.com



WHERE THE FUN IS

(508) 867-6629

Candlepin Bowling • Glow Bowling

18 Hole Miniature Golf

Billiards • Arcade Room

Birthday Parties • New Food Menu

Now Serving Beer & Wine

www.bugeylanes.com

199 North Brookfield Rd
East Brookfield, MA 01515

HAYMAKERS COUNTRY STORE



Primitive & Country Goods

177 East Main St. ~ Rt. 9
West Brookfield, Ma.
508.867.4401

BROOKFIELD INN Bed & Breakfast

*Experience the
comfort of home
with hospitality
geared to
your relaxation!*



8 West Main Street
Brookfield, MA 01506
(508) 867-3111
www.thebrookfieldinn.com



Celebrating 50 years of serving great New England food!

Salem Cross INN RESTAURANT & TAVERN

260 West Main Street West Brookfield MA 01585

Hexmark Tavern

Tuesday thru Friday • 4 till 9:00

Dining Room Hours

Tuesday thru Friday • 11:30 AM - 9:00 PM

Saturday 5:00 - 9:00 PM • Sunday 12:00 - 8:00 PM

FULL CALENDAR OF EVENTS AT

www.salemcrossinn.com

508 867 2345

GEORGE WASHINGTON MEMORIAL HIGHWAY

Across from the former Brookfield Inn on West Main Street (Rte 9). In 1789, our 1st President traveled through 5 of the New England states. This tour has become the basis for the "George Washington slept here" claims – but he never slept in Brookfield.
www.brookfieldma.us

GENERAL HENRY KNOX TRAIL MARKER

General Henry Knox passed here in the winter of 1775 – 1776 to deliver to General George Washington at Cambridge the train of artillery from Fort Ticonderoga used to force the British Army to evacuate Boston. On south side of Rt. 9, at junction of Main St.
www.hmdb.org

THE SPOONER WELL MARKER

Located on East Main Street. In March 1778, Joshua Spooner, a farmer in Brookfield, was beaten to death and his body stuffed down a well. Four people were hanged for the crime: two British soldiers, a young Continental soldier, and Spooner's wife, Bathsheba, who was charged with instigating the murder.
www.brookfieldma.us

EAST BROOKFIELD

BOGEY LANES ☺

199 North Brookfield Road
East Brookfield, MA 01515
(508) 867-6629

www.bogeylanes.com

"Where the FUN is!" Candlepin Bowling • Glow Bowling
18 Hole Miniature Golf • Billiards • Arcade Room • Birthday Parties • New Food Menu • Now Serving Beer & Wine
1/2 Mile off Rt 9 in East Brookfield.

TOWN HALL

122 Connie Mack Drive
East Brookfield, MA 01515
(508) 867-6769
www.eastbrookfieldma.us

HARDWICK

TOWN HALL

307 Main Street, Gilbertville, MA 01031
(413) 477-6700
www.townofhardwick.com

WARE RIVER SNOWMOBILE CLUB

www.wariversnowmobileclub.com

HOLLAND

TOWN HALL

27 Sturbridge Road, Holland, MA 01521
(413) 245-7108 ext. 12
www.town.holland.ma.us

QUINEBAUG WOODS

Dug Hill Road
Holland, MA 01521
(978) 840-4446

www.thetrustees.org

A short loop trail heads north along the Quinebaug River before turning west and proceeding up and over a steep hillside with rocky outcrops. On the exposed ridge stand the stone chimney and foundation steps that remain from a cabin built in 1932. Visitors can take in views of Blake Hill to the east and Hamilton Reservoir to the south.

MONSON

JACOB THOMPSON HOUSE

Main and Thompson Streets, Monson
(413) 267-4292

Jacob Thompson House (c. 1811), at Main and Thompson Streets, is the house museum of the Monson Historical Society. It is decorated with beautiful antiques from the Federal to the Victorian Period. www.monsonhistoricalsociety.org

KEEP HOMESTEAD MUSEUM ☺

35 Ely Road, Monson, MA
(413) 267-4137

www.keepphomesteadmuseum.org
Email: khm@keepphomesteadmuseum.org

Open 1st Sunday of the month, 1:00-3:30pm, April through December. The museum features an extensive **Button collection** (one of the largest in the US), special exhibits and programs. It is also a house museum with the belongings of a family who lived in the home for over 150 years. Nature trails are open year-round (maps in parking lot) for hiking, cross-country skiing and snowshoeing. No admission charge. Special tours by appointment.

MEMORIAL HALL

Located on Main Street (c. 1884) a Romanesque Style building erected of Monson granite that contains an original G.A.R. Hall (Civil War) on its second floor, the original Town jail in the basement and the main hall used for theater, concerts and other events. www.monsonhistoricalsociety.org

MONSON FREE LIBRARY

2 High Street Monson, MA 01057
(413) 267-3866
www.monsonlibrary.com

TOWN HALL

110 Main Street
 Monson, MA 01057
(413) 267-4115
www.monson-ma.gov

NORCROSS FAMILY CEMETERY

Across the street from Norcross House (next to the Town Office Building) is the Norcross Family cemetery. Both Joel Norcross and his first wife, Betsey Fay (Emily Dickinson's grandmother) are buried here, along with other family members.

PEAKED MOUNTAIN

43 Butler Road, Monson, MA 01057
(413) 532-1631
www.thetrustees.org

From the 1,227-foot summit of Peaked ("pea-kid") Mountain, a panoramic view unfolds taking in Connecticut's Shenipsit State Forest to the south, Mount Monadnock to the north, and Mount Wachusett to the northeast. In between lies a sweep of rolling New England countryside. The valley overlook provides views of nearby Boulder Hill and the City of Springfield to the west.

QUABOAG COUNTRY CLUB

70 Palmer Road, Monson, MA 01057
(413) 267-5294
www.quaboagcountryclub.com

Quaboag Country Club located on Route 32, Monson, MA is a spectacular 9-hole course with a championship layout and private club conditions.

NEW BRAINTREE**TOWN HALL**

20 Memorial Drive
 New Braintree, MA 01531
(508) 867-4952
www.newbraintree.net

NORTH BROOKFIELD**TOWN HALL**

185 North Main Street
 North Brookfield, MA 01535
(508) 867-0203
www.northbrookfield.net

**PALMER****PALMER PUBLIC LIBRARY
RAILROAD RESEARCH CENTER**

1455 North Main Street
 Palmer, MA 01069
(413) 283-3330
www.palmer.lib.ma.us

TOWN HALL

4417 Main Street • Palmer, MA 01069
(413) 283-2608
www.townofpalmer.com

DANIELSON, CT**THE LAST GREEN VALLEY, INC.**

P.O. Box 29/111 Main Street
 Danielson, CT 06239
(866) 363-7226
www.thelastgreenvalley.org

The Last Green Valley is the popular name of the Quinebaug and Shetucket Rivers Valley National Heritage Corridor, designated by Congress in 1994 as an area of national significance. It remains more than 78% forest and farmland, and the region is comprised of 35 towns in northeastern Connecticut and south central Mass. Yankee Magazine recently called it, "A wide, quiet corridor of pretty villages and dreamy landscapes..." Enjoy our natural splendors, scenic byways, unique shopping and dining, charming accommodations, authentic American history and the arts. Immerse yourself in old-time nostalgia, so close to everywhere, yet distinctly far, far away from it all. Isn't time you took a break?

*Keep Homestead Museum*

Button collection, house museum, nature trails

Open House: 1:00-3:30pm

1st Sunday of month, April through December

35 Ely Road
 Monson, MA 01057
 413-267-4137

Mailing Address:
 110 Main Street
 Monson, MA 01057

khm@keephomesteadmuseum.org www.KeepHomesteadMuseum.org

UNCASVILLE, CT

MOHEGAN SUN

1 Mohegan Sun Boulevard
Uncasville, CT 06382

(888) 777-7922 For Hotel Reservations

(888) 226-7711 For General Information

PALMER

TRAIN STATION

The 19th century Romanesque style train station "Steaming Tender" Restaurant which has been authentically restored. Dine in the original 1884 Waiting Room as the trains rumble by. See the 1915 Porter Steam Locomotive and its Tender that is on display at the historic railroad station. The Palmer Railroad Station was the 3rd largest station in Massachusetts and was designed by the world-renowned architect, Henry Hobson Richardson.

Many famous people have passed through Palmer on the Boston and Albany train, dignitaries including: James K. Polk, Al Smith, Jenny Lind, Andrew Johnson (Vice President), Teddy Roosevelt, Ulysses S. Grant, Abe Lincoln and Mark Twain. Some stopped for just a few minutes, others such as Jenny Lind had lunch at the hotel and others such as Al Smith got lost and missed his train. Take a stroll to Main Street and continue to the Palmer Library Railroad Research Center and learn more about: **The Town of Seven Railroads** The Boston and Albany Railroad, The Central Vermont Railway, The Ware River Railroad, The Old Rabbit Line, The Central Mass Railroad, The Hampden Railroad (never operated), The Southern New England Railroad (never operated). www.sevenrailroads.com

GENERAL HENRY KNOX TRAIL MARKER

Through this place passed General Henry Knox in the winter of 1775 – 1776 to deliver to General George Washington at Cambridge the train of artillery from Fort Ticonderoga used to force the British Army to evacuate Boston. North side of Rt. 20, west of junction of Rt. 181. www.hmdb.org

SPENCER

GENERAL HENRY KNOX TRAIL MARKER

Through this place passed General Henry Knox in the winter of 1775 – 1776 to deliver to General George Washington at Cambridge the train of artillery from Fort Ticonderoga used to force the British Army to evacuate Boston. On north side of Rt. 9, town center. www.hmdb.org

SNOWBIRDS SNOWMOBILE CLUB

www.spencersnowbirds.com

SPENCER STATE FOREST

Howe Pond Road, Spencer MA

Monument to Howe Family:

Elias Howe Jr 1819-1867 *Inventor of Sewing Machine 1846*

William Howe 1808-1852 *Inventor of Truss Bridge 1840*

Tyler Howe 1800-1880 *Inventor of Spring Bed 1855*

TOWN HALL

157 Main Street
Spencer, MA 01562

(508) 885-7500

www.spencerma.gov

WALES

TOWN HALL

3 Hollow Road
Wales, MA 01081

(413) 245-7571

On Main and Church Street look for a plaque commemorating Civil War veteran Private Joseph Reed of the African-American 54th Massachusetts 'Glory' Regiment.

WARE

TOWN HALL

126 Main Street
Ware, MA 01082

(413) 967-4471

www.townofware.com

WARE-HARDWICK COVERED BRIDGE

The bridge was built in 1886 and added to the National Historic Register in 1986. The Gilbertville Covered Bridge spans the Ware River and joins the Massachusetts towns of Ware and Hardwick (in Gilbertville village). The bridge also joins the Massachusetts Hampshire (Ware) and Worcester (Hardwick) counties.

www.warehistoricalsociety.wetpaint.com

WARE CENTER MEETING HOUSE

(413) 967-7136

The First Congregational Church, also known as the Ware Center Church and Meeting House, is the oldest church in Ware. It originally served as both a church and a seat of town government for Ware Parish. Behind the church is a burial ground reserved for ministers and deacons and their families. Ware Center was the center of the town, the town green and a meeting place where one could find a tavern, the blacksmith, the animal pound.

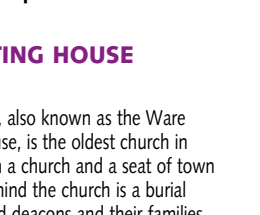
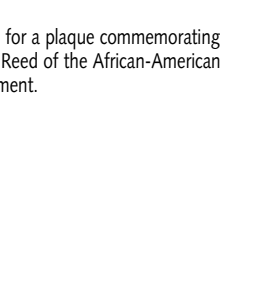
www.warehistoricalsociety.wetpaint.com

WARREN

TOWN HALL

48 High Street
Warren, MA 01083

(413) 436-5701



GENERAL HENRY KNOX TRAIL MARKER

Through this place passed General Henry Knox in the winter of 1775 – 1776 to deliver to General George Washington at Cambridge the train of artillery from Fort Ticonderoga used to force the British Army to evacuate Boston. On south side of Rt. 67, ¼ mile east of Warren Center. www.hmdb.org

WEST BROOKFIELD

FORT GILBERT MEMORIAL

North Main Street
Route 67 Just North of School Street
www.westbrookfield.org

HISTORIC FOSTER HILL

A driving or walking tour highlights five historic sites associated with the 1665 Quaboag Plantation, King Philip War, and the place where in 1779 Jedediah Foster wrote the Massachusetts State Constitution. www.westbrookfield.org

LUCY STONE HOMESITE HOMESTEAD

Destroyed by fire, with stone marker outlining accomplishments of Lucy Stone, early champion of women's rights.
www.westbrookfield.org

OLD INDIAN CEMETERY

Cottage Street, North of Route 9 this cemetery keeps a silent vigil to much of West Brookfield's history. It is the resting place of 16 French and Indian War soldiers, 11 Revolutionary War soldiers, and 6 men who were killed in 1710 by Indians and became known as the Haymakers. It is also the resting place for Jedediah Foster, his wife and daughter, and the Honorable Diederick Leertouwer. This cemetery was used from 1710 to 1849. Enjoy some of the spelling and wording used in old times. The cemetery has a rectangular shape and is surrounded by stone walls on all sides. There is one walk-in entrance on Cottage Street. The landscape remains rough and unadorned. It has the plainness of an old graveyard. www.westbrookfield.org

ROCK HOUSE RESERVATION

(978) 840-4446

Route 9, West Brookfield, MA

A massive, cave-like rock shelter, exposed after the glacial retreat 10,000 years ago, served as a winter camp for Native Americans. By mid 1800's, it was part of a farm owned by William Adams whose descendant, F. A. Carter, dammed a small stream to create Carter Pond and built the cottage now serving as a trailside museum and nature center. Open year round, daily, sunrise to sunset. Admission is free to all.

www.thetrustees.org

TOWN HALL

P.O. Box 372
West Brookfield, MA 01585
(508) 867-1415

WHITEFIELD ROCK UPON FOSTER HILL

On the sixteenth of October in the year 1740 the touring evangelist preacher Reverend George Whitefield gave one of his rousing sermons from a large rock upon Foster Hill to at least four to five hundred people. Considering that this pasture was located in the heart of a still thinly settled region, this eighteenth century gathering must indeed have been a notable event.

www.westbrookfield.org



For More Attractions Info
visit www.qhma.com

BRIMFIELD

HOLLOW BROOK FARMS

73 Hollow Road, Brimfield, MA 01010

(413) 245-9325

www.hollowbrookfarms.com

Want to travel to and from your wedding in a romantic horse drawn carriage and have your ceremony in a beautiful country setting? All this and more is waiting for you in Brimfield, MA. There are meadows, woodlands, ponds, covered bridges, and an open air chapel for your ceremony and wedding photos. Horses, carriages and wagons available for Weddings, Hayrides and more.

BROOKFIELD

LAMOUREUX GREENHOUSES9 Schoolhouse Road
Brookfield, MA 01506**(508) 867-2218**

Family run business. 10 Greenhouses on 25 acres fully established nursery. Fish and water plants.

MONSON

KORAN'S FARM AND GIFT SHOP

160 East Hill Road, Monson, MA 01057

(413) 267-3396

Greenhouses - PYO Strawberries. Our own sweet corn, tomatoes and other produce. Yankee Candles, Dept. 56 Villages, Snowbabies, Boyd's Bears, Bean Pot Soy Candles, Jim Shore and more, Amish items, Christmas trees. Daily May-Oct; Nov. 25-Dec 24; 10am-6pm.

WESTVIEW FARMS CREAMERY ♿

111 East Hill Road, Monson, MA 01057

(413) 267-5355

Open daily mid April to Nov. 1st. **Full Restaurant**, farm and garden supplies, pumpkin picking, ice cream, hamburgs, hotdogs, chicken, seafood, wraps and more. School trips, and busses welcome by reservation. Petting zoo! **Busses welcome!**

PALMER

PATHFINDER REGIONAL VOCATIONAL TECHNICAL HIGH SCHOOLHorticultural Department
240 Sykes Street, Palmer, MA 01069**(413) 283-9701**

Horticultural Department sells flowers the week beginning the week of Mother's Day until sold out. School hours only. Holiday Wreaths and Poinsettias are sold the week after Thanksgiving.

FIVE STAR GARDENS

181 Ware Street (Rt 32), Palmer, MA 01069

(413) 283-4900

www.fivestargardens.com

The Garden Center is situated on three acres, beautifully landscaped by the display of our products. This setting makes the Garden Center a most enjoyable and relaxing shopping experience as you stroll through the wide assortment of unusual plant offerings and garden essentials.

NORTH BROOKFIELD

BROOKFIELD ORCHARDS ♿

12 Lincoln Road, N. Brookfield, MA 01535

(508) 867-6858 • (877) 622-7555

www.farmstands.com

Email: brookfieldo@aol.com

Open year round. Apples, apple pie dumplings, crafts, antiques, preserves, maple-penny candy, cheddar cheese and used books.

WARREN

BREEZELAND ORCHARDS ♿

1791 Southbridge Road, Warren, MA 01083

(413) 436-7100 Fax (413) 436-7122

www.breezelandsoorchards.com

Farm stand opens August 1st thru Thanksgiving with peaches, apples, cider, donuts, and pies. Pick your own apples September 1st thru October.

WEST BROOKFIELD

RAGGED HILL ORCHARD94 John Gilbert Road
West Brookfield, MA 01585**(508) 867-2187**

www.raggedhill.com

Apples - Cortlands, Delicious and more; cider, peaches, raspberries, blueberries; in season.





Store Hours:
 Monday-Friday 7:00am-6:00pm
 Saturdays 8:00am-5:00pm
 Sundays 9:30am-5:00pm

(413) 477-6913
Its like shopping back in time.
Hardwick's best kept secret.

Breezeland's
 ORCHARDS



the APPLE MAN

**Our Farm Stand is
 open August thru
 Thanksgiving**

Apples, peaches, pies baked
 daily, cider doughnuts and
 Pick your own!

**Store is open 7 days a week
 Doors open at 10:00am**

www.breezelandSORCHARDS.com

(413) 436-7122 1791 Southbridge Road, Warren

Hardwick Vineyard & Winery



We welcome visitors for tastings, tours, sales, and special events. Our Timber Frame Barn is a wonderful place to hold your Wedding, Rehearsal Dinner, Baby Shower, Corporate Outing, etc. Any event is made memorable at the Hardwick Vineyard & Winery. - The Samek Family

Hours:
 Friday-Monday
 11am-5pm



Bring in this
 ad for FREE
 Wine Tasting!

▼-▼-▼- 6 VARIETIES -▼-▼-▼-

• Giles E. Warner - dry white wine • Yankee Boy - semi dry white wine • Yankee Girl Blush - light wine • Massetts Cranberry-Grape wine w/cranberry concentrate • Hardwick Red - Massachusetts Marchal Foch • Quabbin Native - Red Wine

3305 Greenwich Road - Hardwick, MA

413-967-7763 • www.hardwickwinery.com



**Route 9, West Brookfield
 (508) 867-6504**

Call for Take out • Picnic Tables
 Open April - October

Specializing in: Fresh Seafood • Chicken
 Ribs • Burgers • Dogs • Icecream

**REED'S
 COUNTRY STORE**
 Route 67 • New Braintree, MA
**SPECIAL DINNER MENU
 FRIDAY EVENINGS!**

**Serving breakfast & lunch
 country style since 1977**

BREAKFAST Sun. 8am-12pm
 BREAKFAST & LUNCH T-Th & Sat. 7am-2pm
 LUNCH & DINNER Fri. 11am-2pm & 5-9pm

508-867-9512

TENT RENTAL

and Table Rental
 on your lot when you arrive

Call toll free

1-(800) 367-8368

(1-800-FOR-TENT) or

(508) 234-8748

We feature Clearspan Tents.

The Tent Connection

restaurants

BELCHERTOWN

ROADHOUSE CAFE

176 Federal Street, Belchertown, MA 01007

(413) 323-6175

www.roadhousecafe.net

The Best Breakfast you'll ever have! Real Food, Real Organic! Only the freshest, locally grown, organic ingredients are used to make everything from our homemade bread to our organic "Award Winning" blueberry pancakes. Now enjoy Real Lunch, featuring Hot Panini Sandwiches and savour our daily soups, served weekdays Monday thru Friday. WiFi available. Monday thru Friday 6am - 1pm, Saturday & Sunday 7am - 2pm.

BRIMFIELD

APPLE BARN CAFE

52 Palmer Road
Brimfield, MA 01010

(413) 245-4575



ATHENS PIZZA

26 Sturbridge Road • Rt. 20
Brimfield, MA 01010-9506

(413) 245-PIZZA • (413) 245-9437

Hours: Sun-Wed 10am-9pm • Thurs-Fri 10am-10pm

BROOKFIELD

CARMELLA'S ITALIAN KITCHEN

55 South Maple Street
Brookfield, MA 01506

(508) 867-5475

www.carmellasitaliankitchen.com

Sunday: 12 Noon to 9pm, Mon-Thurs: 11am to 9pm
Fri & Sat: 11am to 10pm. Just minutes from Sturbridge!

Athens Pizza



413-245-PIZZA

413-245-9700

413-245-9437

Hours:

Sun-Wed 10am-9pm

Thurs-Fri 10am-10pm

26 Sturbridge Road, Brimfield, MA • Rt. 20

EAST BROOKFIELD

E.B. FLATTS

245 W. Main Street (Rt. 9)
East Brookfield, MA 01515

(508) 867-6643

Good food, great atmosphere, breakfast and lunch daily, dinner Thurs-Saturday.

HARDWICK

HARDWICK VINEYARD & WINERY

3305 Greenwich Road
Hardwick, MA 01037

(413) 967-7763 Fax (413) 967-7763

www.hardwickwinery.com

We welcome visitors for wine tastings, tours, sales, and special events. Weddings, rehearsal dinners, baby showers, corporate outings etc.

MONSON

WESTVIEW FARMS CREAMERY &

111 East Hill Road, Monson, MA 01057

(413) 267-5355

Open daily mid April to Nov. 1st. Full Restaurant and farm, pumpkin picking, ice cream, hamburgs, hotdogs, chicken, seafood, wraps and more. School trips, field trips and busses welcome by reservation. Petting zoo! Busses welcome!



**Serving Fresh Seafood,
The Best Lobster Roll, &
Creamiest Ice Cream
around since 1956**



A Family Tradition

Janine's Frostee

149 East St Ware

413-967-7950

www.janinesfrostee.com



NEW BRAINTREE

REED'S COUNTRY STORE

753 Barre Road, Route 67
New Braintree, MA 01531

(508) 867-9512

Breakfast Sun 8am-12pm
Breakfast & Lunch T-Th & Sat 7am-2pm
Lunch & Dinner Fri 11am-2pm & 5-9pm

PALMER

ALVIN RONDEAU'S DAIRY BAR

Route 32 / Ware Road
Palmer, MA 01069

(413) 284-0068

Serving Homemade Ice Cream Since 1940! 42 Flavors • 5 No Sugar Added • 5 Sorbet • Cheeseburgers • Hotdogs • Grinders
French Fries • Always Fresh Seafood!

STEAMING TENDER RESTAURANT

28 Depot Street, Palmer, MA 01069

(413) 283-2744 Fax (413) 283-5010

www.steamingtender.com

Visit the authentically restored Passenger Station, designed by H.H. Richardson. A 1915 Porter Locomotive and Tender adjacent to the station. Step back in time and enjoy your meal while trains pass by.

WARE

JANINE'S FROSTEE INC.

149 East Main Street
Junctions of Rts 9 & 32
Ware, MA 01082

(413) 967-7950

www.janinesfrostee.com

Janine's is a seasonal, family friendly drive-in serving the best foods and ice cream in the area since 1956. We have safe and comfortable covered seating areas, as well as live music and various events throughout the season. Check us out on the web or stop by and see us in person, we'd love to meet you. Janine's Frostee is worth the drive from anywhere! Full Menu – Open daily at 11 am – Call ahead for take-out.

WEST BROOKFIELD

HOWARD'S DRIVE-IN

121 East Main Street (Rt.9)
West Brookfield, MA 01585

(508) 867-6504

Specializing in: Fresh seafood, chicken, ribs, burgers, dogs and ice cream. Open Daily at 11am.

Welcome Foodies!
Sit, Relax, Enjoy!

Open 7 days ... All of them for Breakfast and Lunch
Even some of them for Dinner



Serving Sunday thru Wednesday until 1:45 pm
Thursday, Friday, Saturday serving 'til 8:45 pm

Welcome to E.B. Flatts
Opened On Earth
February, 2006

Where the locals bring their guests!

E.B.Flatts
245 W. Main (Rt 9) East Brookfield
508-867-6643 ebflatts.com

**PLEASANT STREET PUB & PIZZA
AT YE OLDE TAVERN**

Corner of Pleasant Street & East Main Street
West Brookfield, MA 01585

(508) 867-9709

www.westbrookfieldtavern.com

Brick Oven Pizza and more. Dinner served
7 nights a week starting at 5:00pm.

WEST BROOKFIELD

**SALEM CROSS INN RESTAURANT &
HEXMARK TAVERN** ♿

260 West Main Street, Route 9
West Brookfield, MA 01585

(508) 867-2345 Fax (508) 867-0351

www.salemcrossinn.com

Email: info@salemcrossinn.com

Restored 1700s homestead where fine food and drinks
are served in traditional New England style.

**For more restaurant info
visit www.qhma.com**

BELCHERTOWN

BELL & HUDSON INS. AGENCY, INC

19 No. Main Street
Belchertown, MA 01007

(800) 894-9591 Fax 413-284-0165

www.bellandHUDSON.com

A full service independent 100+ year-old insurance agency offering comprehensive protection, competitive prices and excellent service.

BONDSDVILLE

BONDSDVILLE FIRE & WATER DISTRICT

3174 Main Street, P.O. Box 179
Bondsville, MA 01009

(413) 284-1627 Fax 413-284-0165

www.water.bondsvillefiredepartment.com

Serving the residents of the Town of Palmer, Fire District #3, with fire protection and quality drinking water.

NESCO SALES INC.

89 1/2 State St.
Bondsville, MA 01009

(413) 283-6403 or (800) 226-6403

Fax (413) 283-6414

www.nescoautobody.com

E-mail: nescosales@comcast.net

A complete auto body center specializing in repairing collision damaged vehicles. Family owned since 1981.

BRIMFIELD

THE PARTY RENTAL CENTER

1 (800) FOR-TENT or (508) 234-8748

Tent and table rental featuring Clearspan Tents.

Set up before you arrive.

MONSON

GREENE ROOM PRODUCTIONS

54 High Street • Monson, MA 01057

(413) 668-7284

Greene Room Productions; Theatre Production and Educational Outreach Inc. is dedicated to producing culturally diverse quality entertainment, while providing unique, hands-on opportunities in theatre performance and production, enriching the lives of local children and adults.

MONSON SAVINGS BANK

146 Main Street • Monson, MA 01057

(413) 267-4646 Fax (413) 267-3705

www.monsonsavings.com

NEW BRAINTREE

1ST STRING

111 Harrington Road
New Braintree, MA 01531

(508) 867-9840

www.1st-String.net
brenda@1st-String.net

Embroidery • Silk Screen • Design

NORTH BROOKFIELD

NORTH BROOKFIELD SAVINGS BANK

35 Summer Street
North Brookfield, MA 01535

(508) 867-7442 Fax (508) 867-7574

www.banknbsb.com

PALMER

BRETON ESTATES / RB ENTERPRISES

Nipmuck Street
P.O. Box 109
Palmer MA 01069

(413) 283-6940 Fax (413) 583-8392

General Contractor, Home Builder, Sand & Gravel operation, Excavator and Trucking.

JACKSON'S AUTO SALES & SERVICE

1307 Park Street, Route 20
Palmer, MA 01069

(413) 289-1016 Fax (413) 289-2050

Quality used cars, 24 hour free towing in 15 mile radius with servicing at Jackson's. Open Mon-Fri 7:30 a.m. - 5:30 p.m.
Sat 7:30 a.m.-12:30 p.m.

ROBERTS & SONS PRINTING, INC.

1415 Main Street, PO Box 956
Palmer, MA 01069

(413) 283-9356 Fax (413) 283-4403

Email: sales@robertsprinting.com

www.robertsprinting.com

Full-service commercial printer offering single through full color printing, graphic design and marketing services, mailing + fulfillment services. Family owned and operated since 1981.



**WING MEMORIAL HOSPITAL &
AND MEDICAL CENTERS**

40 Wright Street, Palmer, MA 01069
(413) 283-7651 Fax (413) 284-5212
www.wingmemorialhospital.org

Wing Memorial Hospital offers **24 hour emergency care** and an array of primary and specialty care physicians.

SPENCER**SPENCER SAVINGS BANK**

176 Main Street
 Spencer, MA 01562
(508) 885-5313
www.spencersavingsbank.com

SPRINGFIELD**BACON WILSON, P.C.**

33 State Street
 Springfield, MA 01103
(413) 781-0560
www.BaconWilson.com

Closely held business and succession planning
 Real estate agreements and transactions • Bank financing

FUTUREWORKS ONE STOP CAREER CENTER

1 Federal Street
 Building 103-3, STCC Technology Park
 Springfield MA 01105
(413) 858-2800
www.getajob.cc

WARE**BAYSTATE HOME INFUSION &
RESPIRATORY SERVICES**

85 South Street, Ware, MA 01082
413-967-2855
baystatehealth.org/bhirs
 Your source for home medical equipment and supplies.

BAYSTATE MARY LANE HOSPITAL &

85 South Street, Ware, MA 01082
(413) 967-6211
 Fax (413) 967-2109
www.baystatehealth.com/mlh
 Inpatient facility with Intensive Care, **24-hour emergency care**, general medical and surgical care, diagnostics, laboratory, and more.

COUNTRY BANK FOR SAVINGS

75 Main Street
 Ware, MA 01 2
(413) 967-6221
www.countrybank.com

GUZIK MOTOR SALES, INC

Routes 9 and 32, Ware, MA 01082
(413) 967-4210
 Jeep Dealership with 50 years of sales and service in Ware!

FAMILYFIRST BANK

40 Main Street
 Ware, MA 01082
(413) 967-6271
www.FamilyFirstBank.com

MOULTON INSURANCE AGENCY

143 West Street, P.O. Box 90
 Ware, MA 01082
(413) 967-3327 Fax (413) 967-4607
www.moultoninsurance.com
 Email: cindy@moultonins.com

Moulton Insurance, Inc. is proud of its family tradition of serving both individuals and businesses since 1952 throughout Western Massachusetts, Moulton Insurance offers personalized service and convenience at easy to find offices in Belchertown, Palmer, and Ware.

ROLLA MOTOR PARTS, INC.

175 West Street
 Ware, MA 01082
(413) 967-5121
 Fax (413) 967-4016

ST. GERMAIN INSURANCE INC.

246 West Street
 Ware MA 01082
(413) 967-6341 • (800) 499-9561
 Fax (413) 967-9537
 St. Germain Insurance, Inc. is a full-service Independent Insurance Agency which has a long history of serving Massachusetts businesses & residents since 1966.
 AUTO • HOME • BUSINESS

WARREN**THE CENTERED PLACE YOGA STUDIO**

286 Bridge Street, Warren, MA 01083
(413) 436-7374 (800) 815-7374
www.thecenteredplace.com
 Email: thecenteredplace@comcast.net

For more Services info
 visit www.qhma.com

WEST BROOKFIELD

BROOKHAVEN ASSISTED CARE

19 West Main Street
West Brookfield, MA 01585
508-612-7525 Call Nancy B.
508-867-3325 Nancy O. or Jen
brookhavenassistedcare.com

24 hour care, medical management, RN on staff, assistance with activities of daily living, activity program and a well trained, compassionate and caring staff.

QUIRK WIRE, INC.

Route 9, Box 1180
West Brookfield, MA 01585
(508) 867-3155 Fax (508) 867-5132
www.quirkwire.com

DBA Wirecraft Products • For over 45 years Wirecraft has been a trusted source for high temperature wire and cable. We are dedicated to providing the highest quality products that meet our customers' specifications. An Employee Owned Company.

WILBRAHAM

HAMPDEN BANK

2005 Boston Road, Wilbraham, MA 01095
(413) 452-5280
www.hampdenbank.com

COMMUNITY SERVICES

QUABOAG VALLEY COMMUNITY DEVELOPMENT CORPORATION

23 West Main Street, Suite 1
Ware, MA 01082
(413) 967-3001 Fax (413) 967-3008
www.qvcdc.com

A member-based non-profit that serves the 15 towns of the Quaboag Hills Region; offering many programs and services with a focus on Economic Development.

MASS. DIVISION OF FISHERIES & WILDLIFE

1 Rabbit Hill Rd., Westboro MA 01581
(508) 389-6300
www.mass.gov/masswildlife
Fishing, Hunting, Wildlife Viewing Information



BRAIDED & AREA RUG FACTORY OUTLET

A True Factory Mill Store, featuring our own Braided Rugs made on Location

SAVINGS up to 60% from MSRP also

- * 100% Wool Hand Made Hooked Rugs
- * Room Size CARPET remnants
- * Machine Made Wool & Synthetic Oriental Rugs

Save an Additional **5%** with this Ad. Cannot be combined with other discounts. Expires 11-30-11

THORNDIKE
CARPET & RUG OUTLET

www.thorndikemills.com (413) 283-9021

MILL STORE HOURS	25 Ware Street, Palmer, MA
Tues - Fri 10:00 AM- 4:45 PM	1 Mile from Mass Pike Exit 8
Saturday 9:00 AM- Noon	on Route 32 North

Manufacturers of Braided Rugs Since 1925

MASS. DEPT. OF CONSERVATION & RECREATION

251 Causeway Street, Boston MA 02114
(617) 626-1400
www.mass.gov/massparks
State Parks, Forests and Campgrounds

MASS. DEPT. OF AGRICULTURAL RESOURCES

251 Causeway St., 5th Fl., Boston MA 02114
www.mass.gov/massgown
Farmer's Markets, Pick Your Own, Farm Stands

MASSACHUSETTS OFFICE OF TRAVEL AND TOURISM

10 Park Plaza, Suite 4510, Boston, MA 02116
(617) 973-8500
www.massvacation.com



QUIRK WIRE, INC.

DBA Wirecraft Products

A trusted source for high temperature wire and cable

Route 9, Box 1180
West Brookfield, MA 01585
(508) 867-3155
www.quirkwire.com



Guzik Motor Sales, Inc

**Routes 9 and 32
Ware, MA**

**50 Years of Sales
and Service in
Ware!**

413-967-4210

Your Business is Our Business

Closely held business and succession planning

Real estate agreements and transactions

Bank financing

Bacon \ Wilson
ATTORNEYS AT LAW



SPRINGFIELD WESTFIELD NORTHAMPTON AMHERST
413.781.0560 \ BaconWilson.com \ youtube.com/user/BaconWilsonLaw

EMBROIDERY • SILK SCREEN • DESIGN



www.1st-String.net

***Coordinating a
Winning Team!***

508.867.9840



Brookhaven Assisted Care

19 West Main Street
West Brookfield, MA 01585

43 years of service to people with confusion, forgetfulness, early to moderate Dementia, Alzheimer's, Depression, Diabetes, Heart Disease, Arthritis, hearing loss, vision impairment, or just in need of tender loving care and a nice home in which to live.

24 hour care, medical management, RN on staff, assistance with activities of daily living, activity program and a well trained, compassionate and caring staff.

Available in-house: physician's services, pharmacy services, podiatry services, VNA Nursing services, Hospice, physical therapy, x-ray, lab, EKG, geriatric-psych services, transportation available, hairdresser / barber

Call Nancy B. 508-612-7525 • Nancy O. or Jen 508-867-3325

brookhavenassistedcare.com



The Commonwealth of Massachusetts
HOUSE OF REPRESENTATIVES

REP. ANNE M. GOBI
REPRESENTATIVE
WORCESTER DISTRICT

Rep. Anne Gobi • Room 473F
State House, Boston, MA 02133
617 722 2210

Email Anne.Gobi@mahouse.gov
District number 1 800 650 4624



Senator Steve Brewer

*He's Working
for You!*

State House Room 109-B, State House
Boston, MA 02133

Telephone: 617-722-1540 Fax: 617-722-1078
Email: Stephen.Brewer@massmail.state.ma.us

www.stevewbrewer.org

Wilton Children's Clothing Outlet

Historic Millyard

Ware, MA 01082

(413) 967-5811

Largest children's clothing store in
Western Mass. Oshkosh, Healthtex,
Carters and more at discount prices.
Open Mon-Sat 9-5, Sun. 12-5.

*"Small businesses and individual entrepreneurs
are the backbone of the Quabog Valley economy"*

TODD M. SMOLA

STATE REPRESENTATIVE
1ST HAMPTON DISTRICT

Rep.ToddsMola@hou.state.ma.us



STATE HOUSE, ROOM 156
BOSTON, MA 02133
617.722.2240

The Commonwealth of Massachusetts
HOUSE OF REPRESENTATIVES

BROOKFIELD

BROWSE THE BROOKFIELDS AND BEYOND

www.browsethebrookfields.com

Take a picturesque ride through the Brookfields and enjoy unique specialty shops and restaurants.

TIP TOP COUNTRY STORE

8 Central Street • Brookfield, MA 01506

(508) 867-0460

Come in for a freshly brewed organic coffee, tea or cocoa with a delicious bowl of homemade organic vegetarian soup, muffin or other goodie from TipTop's kitchen.

Monday-Saturday • 8am - 8pm and Sunday • noon - 6pm

EAST BROOKFIELD

HOWE LUMBER CO.

555 Main Street

East Brookfield, MA 01515

(508) 885-5396 Fax (508) 885-7667

www.howelumber.com

MONSON

JULIET ROSE GALLERY

191 Reimers Road

Monson, MA 01057

(413) 596-9741

www.julietrosegallery.net

email: julietrose1@verizon.net

The gallery features a slice of New England and a spice of Jamaica. The Juliet Rose Gallery focuses on unique exhibits in the areas of jewelry, pottery, paintings, sculpture, photography, prints, and weaving. All works are hand-crafted.

KORAN'S FARM AND GIFT SHOP

160 East Hill Road

Monson, MA 01057

(413) 267-3396

Greenhouses - PYO Strawberries. Our own sweetcorn, tomatoes and other produce. Yankee Candles, Dept. 56 Villages, Snowbabies, Boyd's Bears and more, Amish items, cut your own Christmas trees. Daily May-Oct. Nov. 25 - Dec 24 10-6.

NORTH BROOKFIELD

AUNT LIZZIE'S WHATNOT SHOP

197 North Main St.,

North Brookfield, MA 01535

(508) 867-7791

auntlizzieswhatnotshop.blogspot.com

Vintage, antique & contemporary merchandise of all kinds!

NOISY BEAGLE ANTIQUE SHOPPE "HOME OF THE CLOCK BARN"

44 Spring Street

North Brookfield, MA 01535

(508) 867-7475

www.noisybeagle.com

Service and Sales of Modern and Antique Clocks.

Home Service Available

PALMER

LIFE'S MEMORIES & MORE

1085 Park Street • Schoolhouse Commons

Palmer, MA 01069

(413) 283-4448

www.lifememoriesandmore.com

Your Scrapbook Store & More offers 1000's of paper craft products, classes, crops, and custom services.

NICK'S SPORT SHOP

1029 Park Street, Palmer, MA 01069

(413) 283-3920

Fax (413) 283-4389

www.nickssportshop.com

THORNDIKE CARPET & RUG OUTLET

25 Ware Rd (Route 32)

Palmer, MA 01069

(413) 283-9021

www.thorndikecarpetandrug.com

Our Factory Mill Store not only has a very deep selection of Braided Rugs in all sizes, but also an excellent assortment of machine made oriental rugs, hand-hooked wool rugs, and carpeting for both residential or commercial use, all from very well known manufacturers at factory outlet prices.

SPENCER

CORMIER JEWELERS

136 Main Street, Spencer, MA 01562

(508) 885-3385 Fax (508) 885-7660

www.cormierspencer.com

Family owned and operated since 1949, we at Cormiers offer personal and friendly service. Financing available.

WARE

WILTON CHILDREN'S CLOTHING OUTLET

Historic Millyard, Ware, MA 01082

(413) 967-5811 Fax (413) 967-6047

Largest children's clothing store in Western Mass.

OshKosh, Healthtex, Carters and more at discount prices.

Open Mon-Sat 9-5, Sun. 12-5.



YOUR NEIGHBOR SINCE 1975

Specializing in:

Weddings ~ Proms ~ Showers

Company Outings & Holiday Parties

Tradeshows, Meetings & Conferences



The Getaway that Isn't Far Away

Indoor Heated Pool

Family Vacation Packages

Lakeside Resort

366 Main Street, Sturbridge, MA (508) 347-7393

www.sturbridgehosthotel.com

WHISKEY HILL SPORTS

220 Ware Road
West Warren, MA 01092
(413) 436-5885
www.whiskeyhillsports.com
Guns bought, sold and traded.

WEST BROOKFIELD**THE BOOK BEAR**

80 W. Main Street On Rt. 9
West Brookfield, MA 01585
(508) 867-8705
Toll Free 1-877-809-2665
80,000 out of print and rare books! "We Buy Books.
We travel for book collections and estates."
Open 7 days a week, 10-6

HAYMAKERS COUNTRY STORE

Located on Rte. 9 in West Brookfield
177 East Main St. 508.867.4401
(508) 867-4401
www.haymakerscountrystore.com
Primitive and country goods.

LYON IRON

P.O. Box 501, West Brookfield, MA 01585
(508) 867-7316
info@lyoniron.com
Purveyors of fine antique iron for hearth and home,
offering an outstanding selection of fireplace
furniture, cooking utensils, and door hardware.

MILLER ANTIQUES ON THE COMMON

15 School Street
West Brookfield, MA 01585
(508) 867-2679
Open by Appointment or Chance – Antiques and Architectural
Materials, Entire Dismantled Houses & Barns. Restoration
Services Available.

POST & BOOT

78 E. Main Street
West Brookfield, MA 01585
(508) 867-5934
On the common in West Brookfield. House & Garden
Accents. Affordable antiques, birdhouses and feeders,
and house number plates.

THE PURPLE ONION

105 N. Main Street
West Brookfield, MA 01585
(508) 867-9400
Quality Country Furniture and Accessories, Antique
Reproduction, Art Prints and more.

WICKABOAG VALLEY BAIT & TACKLE

6 Wickaboag Valley Road
West Brookfield, MA 01585
(508) 867-8389
www.WickaboagBait.com
We sell live Shiners including Jumbo Pond Shiners, Rosy Red
Minnows, Suckers, Night Crawlers, Meal Worms, Wax Worms,
and Spikes. Open Fri, Sat, Sun 6am-6pm.



Cormier Jewelers & Art Gallery

(508) 885-3385

www.CormierSpencer.com

A Family Business Since 1949
Stop by for Free Cleaning and
Inspection of your rings.

Please call for Store Hours
Gallery is Open to Public

136 MAIN STREET, SPENCER, MA 01562

NICK'S SPORT SHOP INC.

EST. 1945



We Buy,
Sell & Consign Guns

HUNTING
ARCHERY
METAL DETECTORS
FISHING
KNIVES
BASEBALL
BOOTS

HOURS:
T-W, F 9-5:30
THURS. 9-6:30
SAT 9-4

1029 Park Street
Palmer, MA 01069

(413) 283-3920

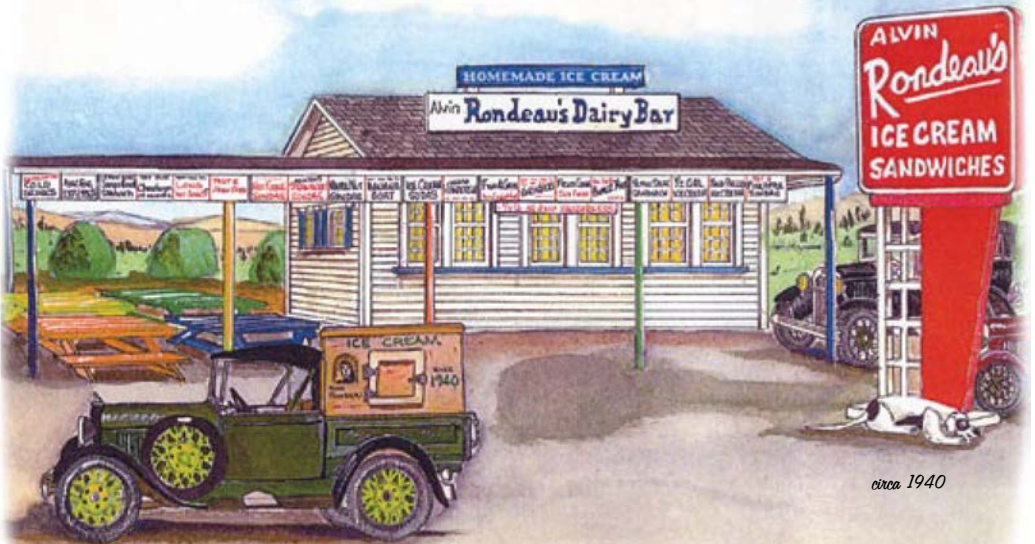
www.nickssportshop.com

Dick & Sue
Hamilton

Alvin Rondeau's Dairy Bar

Serving Homemade Ice Cream
Since 1940!

42 Flavors • 5 No Sugar Added • 5 Sorbet
Cheeseburgers • Hotdogs
Grinders • French Fries
Always Fresh Seafood!



The 2010 Quaboag Hills Chamber of Commerce Business of the Year

(413) 284-0068

**Route 32 / Ware Road
Palmer, MA 01069**