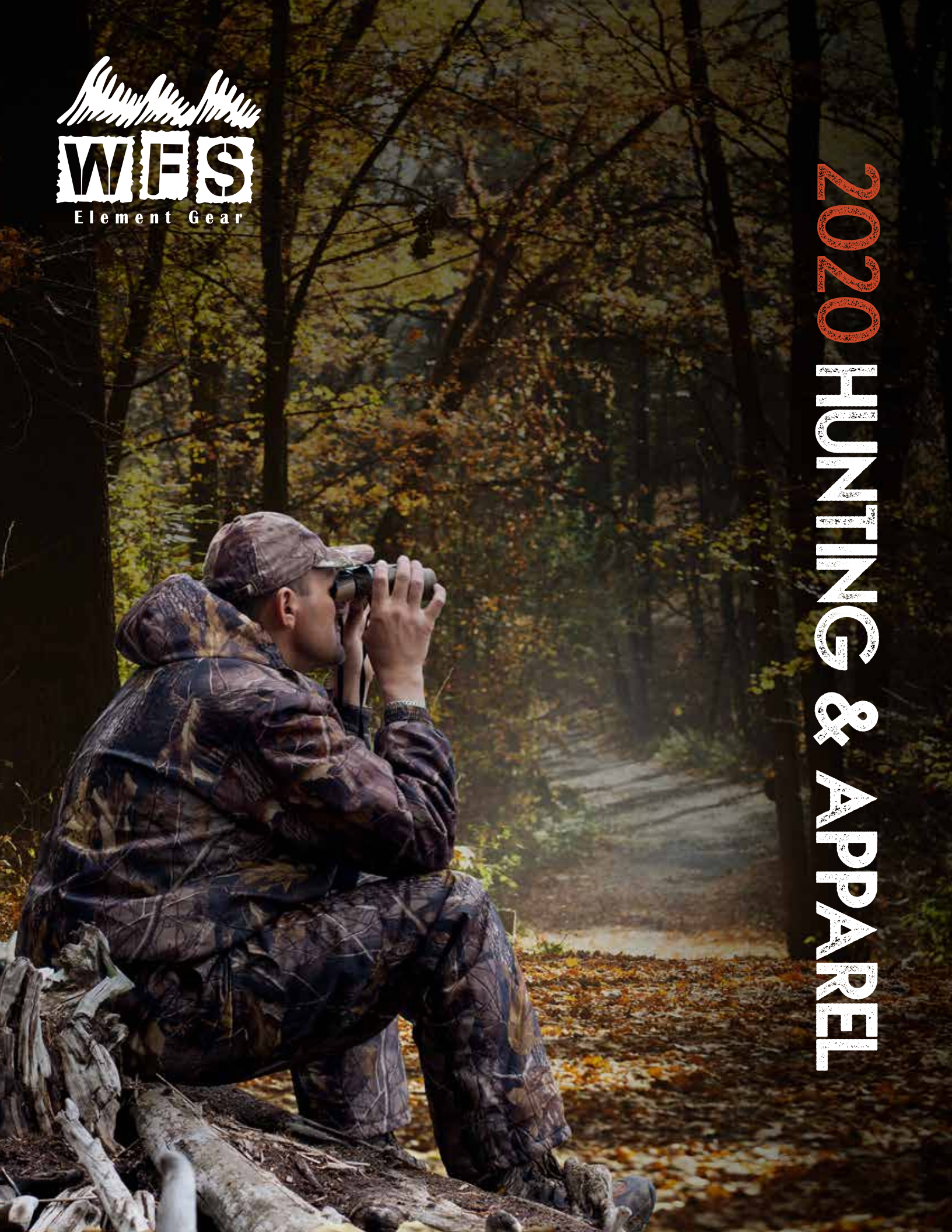




2020 HUNTING & APPAREL



PHILOSOPHY

World Famous Sports (WFS) proudly presents our line of quality Hunting Apparel and accessories. For years WFS has produced quality products at competitive prices. Our goal has been and will continue to be delivering superior items that consumers can enjoy and afford while also bringing you, the retailer, high profit margins and a loyal customer base.

WFS believes that everyone should be able to enjoy the Great Outdoors using quality products. In the future we will continue to scour the world in our quest to bring you the latest technological advances in the industry. We have always believed that you, our customer, are the pulse of the industry; therefore, we will continue to strive to implement your suggestions. Realizing that this aggressive market is continually changing, WFS strives to make you competitive. We thank you for your support over the years, and realize that we could not continue to grow without you.

Sincerely,

William Davila
President

NEW PATTERNS



PINK BREAK UP (PB)



CYAN WAVES (CW)



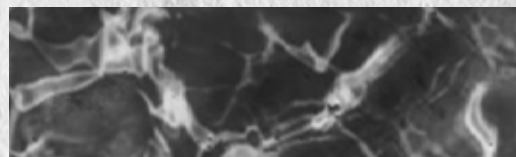
TEAL BREAK UP (TB)



NAVY WAVES (NW)



ORANGE BREAK UP (OB)



BLACK WAVES (BLKW)



NAVY BREAK UP (NB)

P A T T E R N S



BURLY CAMO TAN™ (409)



BLAZE ORANGE™ (90)



PRAIRIE GHOST™ (100)



ORANGE CAMO™ (91)



RIDGE GHOST™ (407)



WOODLAND ORANGE CAMO™ (93)



NORTHWOODS™ (405)



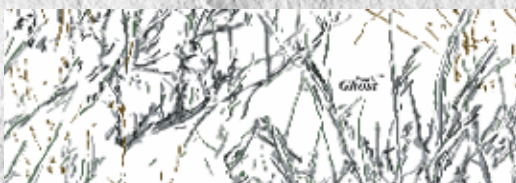
PRYM 1 MP™ (413)



RIVER GHOST™ (101)



PRYM 1 BLACK OUT™ (414)



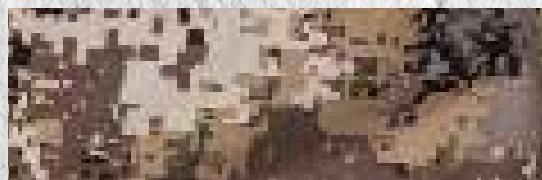
SNOW GHOST™ (86)



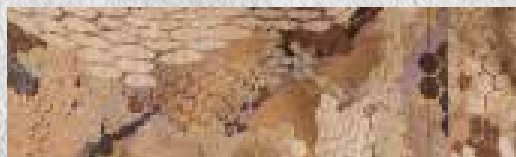
PRYM 1 BLUE SHORE™ (BSH)



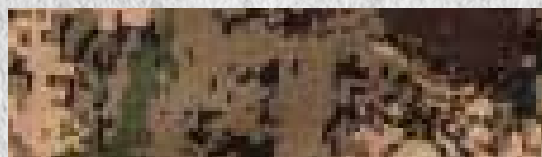
WATERFOWL™ (404)



PREDATOR™ (417)



BIRDS EYE™ (419)



PREYS EYES™ (418)

BRICK LAYER JACKET



20-016-409



20-016-409-OD



20-016-BLACK



20-016-417

SPECS:

- POLYESTER FABRIC
- FEATHER TOUCH POLYESTER INSULATION
- FULL FRONT ZIP
- SIZES: M/2 L/4 XL/4 2X/2
- ALSO AVAILABLE IN 3X AND 4X
- COLORS: BURLY TAN™(409), OD/ BURLY TAN™(409), BLACK

3 LEVEL HEATED JACKET



20-H-1128-409



20-H-1128-409-OD



WK101-H-409



20-H-1128-BLK



20-H-1128-417

SPECS :

- HOODED JACKET
- 3 LEVELS OF HEAT
- OPERATES WITH SIMPLE POWER BANK CHARGER
- POLYESTER FABRIC
- FEATHER TOUCH POLYESTER INSULATION
- FULL FRONT ZIP
- HEAT ACTIVATED BY BUTTON
- *DOES NOT COME WITH POWER BANK
- COLORS: BLACK, BURLY TAN, BURLY / OD , PREDATOR (417)

FULL ZIP JACKET



NS-2000 BLACK



NS-1900 BLACK



NS-2000 GREY



NS-1900 OD

SPECS :

NS-2000

- POLYESTER FABRIC
- MELANGE KNIT BODY
- FULL ZIP
- SIZES: M/2 L/4 XL/4 2X/2
- ALSO AVAILABLE IN 3X AND 4X
- COLORS: GREY, BLACK

NS-1900

- POLYESTER WITH MELANGE KNIT BODY, FAUX WOOL KNIT
- FRONT CHEST ZIPPER POCKET - 2 LAYER SOFT SHELL
- FULL LENGTH ZIPPER THROUGH NECK
- 2 SIDE ZIPPER POCKETS
- SIZES: M/2 L/4 XL/4 2X/2 12 PCS X CASE
- ALSO AVAILABLE IN 3X AND 4X
- COLORS: OD GREEN , BLACK

SUEDE SOFT FLEECE



C410-409



C420-409



C462-409

SPECS :

C410-409

- SUEDE FLEECE BODY
- 2 SIDE ZIPPER POCKETS
- FULL LENGTH ZIPPER
- KNIT CUFFS AND WAIST BAND
- SIZES: M/2 L/4 XL/4 2X/2 12 PCS X CASE
- ALSO AVAILABLE IN 3X AND 4X
- COLORS: BURLY TAN™(409)
- AVAILABLE IN BOY SIZES: C410Y, C410K, C410T

C420-409

- SUEDE FLEECE BODY
- 2 SIDE ZIPPER POCKETS
- FULL LENGTH ZIPPER
- SIZES: M/2 L/4 XL/4 2X/2 12 PCS X CASE
- ALSO AVAILABLE IN 3X AND 4X
- COLORS: BURLY TAN™(409)
- AVAILABLE IN BOY SIZES: C420Y, C420K, C420T

C462-409

- SUEDE FLEECE BODY
- 2 SIDE ZIPPER POCKETS
- FULL LENGTH ZIPPER NECK
- SIZES: M/2 L/4 XL/4 2X/2 12 PCS X CASE
- ALSO AVAILABLE IN 3X AND 4X
- COLORS: BURLY TAN™(409)
- AVAILABLE IN BOY SIZES: C462Y, C462K, C462T

FLEECE 3 POCKET PANT/ SHERPA FLEECE



C450-409



C409-CAMO

SPECS:

C450

- SUEDE FLEECE BODY
- 2 FRONT PATCH POCKETS
- ELASTIC WAIST
- SIZES: M/2 L/4 XL/4 2X/2 12 PCS X CASE
- ALSO AVAILABLE IN 3X AND 4X
- COLORS: BURLY TAN™(409)
- AVAILABLE IN BOY SIZES:
C450Y, C450K, C450T

C-409

- FLEECE BODY
- SHERPA LINING
- FULL LENGTH ZIPPER
- 2 SIDE POCKETS
- SIZES: M/2 L/4 XL/4 2X/2 12 PCS X CASE
- ALSO AVAILABLE IN 3X AND 4X
- SEE PAGE 61 FOR FLANNEL PRINT

BERBER CAMO JACKET/ PANT



C505-C



C550-C

SPECS:

C505-C

- POLYESTER BERBER FLEECE BODY
- FULL LENGTH ZIPPER
- ELASTICIZED CUFFS
- 2 SIDE ZIPPER POCKETS
- SIZES: M/2 L/4 XL/4 2X/2 12 PCS X CASE
- ALSO AVAILABLE IN 3X AND 4X
- COLORS: WOODLAND CAMO

C550-C

- POLYESTER BERBER FLEECE PANT
- ELASTIC WAIST
- 3 POCKETS
- SIZES: M/2 L/4 XL/4 2X/2 12 PCS X CASE
- ALSO AVAILABLE IN 3X AND 4X
- COLORS: WOODLAND CAMO

SWEAT SHIRTS & JACKETS



NEW CAMO HOODED SWEATSHIRTS

NEW !



CHP-OB



CHP-TB



CHP-BLK-OB



CHP-NB



CHP-NAVY-TB

SPECS :

- POLYESTER BODY
- PULLOVER
- KANGAROO POCKET
- HOODED
- DRAWSTRINGS
- SIZES: M/2 L/4 XL/4 2X/2 12 PCS X CASE
- ALSO AVAILABLE IN 3X AND 4X

HOODED SWEATSHIRTS



CHP-405



CHP-409



CHP-BLKW



CHP-FZ-BLKW



CHP-FZ-414



CHP-LIME-409



CHP-417



CHP-418



CHP-419



CHP-407



CHP-BLK OUT



CHP-BRN MP



CHP-BLK BSH



CHP-CHAR MP



CHP-BLK FISH

SPECS :

CHP

- POLYESTER BODY
- 2 POCKETS
- PULLOVER HOODED
- ATTACHED HOOD WITH DRAWSTRINGS
- SIZES: M/2 L/4 XL/4 2X/2 12 PCS X CASE
- ALSO AVAILABLE IN 3X AND 4X

CHP-FZ

- FULL ZIP
- POLYESTER BODY
- 2 POCKETS
- ATTACHED HOOD WITH DRAWSTRINGS
- SIZES: M/2 L/4 XL/4 2X/2 12 PCS X CASE
- ALSO AVAILABLE IN 3X AND 4X

PRYM1 BLACKOUT 1/4 ZIP JACKET



C414-1/4-414

SPECS:

- CHEST ZIPPER POCKET
- 1/4 ZIPPER
- KNIT CUFFS AND WAIST BAND
- SIZES: M/2 L/4 XL/4 2X/2 12 PCS X CASE
- ALSO AVAILABLE IN 3X AND 4X

HIGH PERFORMANCE TECHNICAL APPAREL



HIGH PERFORMANCE STRETCH BUTTON SHIRT



TS-405-409



TS-405-413



TS-405-414



TS-405-417



TS-405-418



TS-405-419

SPECS:

- MULTI-DIRECTIONAL STRETCH FABRIC
- LIGHT WEIGHT CLASSIC TRADITIONAL FIT
- 2 CHEST POCKETS
- SIZES: M/2 L/4 XL/4 2X/2 12 PCS X CASE
- ALSO AVAILABLE IN 3X AND 4X
- COLORS: BURLY TAN™(409) , PRYM1 MP™ (413), PREDATOR™ (417) , PREDATOR EYES™(418) , BIRDS EYES™(419) , PRYM1 BLACKOUT (414)

HIGH PERFORMANCE CARGO PANT



TS-454-409



TS-454-413



TS-454-417



TS-454-418



TS-454-419

SPECS :

- DWR WATER RESISTANT FABRIC
- MULTI-DIRECTIONAL STRETCH FABRIC FOR EASY OF MOVEMENT
- REINFORCED SLASH POCKETS
- GRIPPER WAIST BAND
- SIZES: M/2 L/4 XL/4 2X/2 12 PCS X CASE
- ALSO AVAILABLE IN 3X AND 4X
- COLORS: BURLY TAN™(409) , PRYM1 MP™ (413), PREDATOR™ (417), BROWN, PREDATOR EYES™(418), BIRDS EYES™(419)

HIGH PERFORMANCE INSULATED CARGO PANT



TS-I-454-409



TS-I-454-413



TS-I-454-417



TS-I-454-418



TS-I-454-419

SPECS:

- INSULATED
- DWR WATER RESISTANT FABRIC
- MULTI-DIRECTIONAL STRETCH FABRIC FOR EASY OF MOVEMENT
- REINFORCED SLASH POCKETS
- GRIPPER WAIST BAND
- SIZES: M/2 L/4 XL/4 2X/2 12 PCS X CASE
- ALSO AVAILABLE IN 3X AND 4X
- COLORS: BURLY TAN™(409) , PRYM1 MP™ (413), PREDATOR™(417), BROWN, PREDATOR EYES™(418), BIRDS EYES™(419)

COTTON & POLYESTER APPAREL



COTTON INSULATED HOODED JACKET

→ SHERPA LINED*



MCJ101-409



MCJ101-413



MCJ101-100



MCJSL-103-409



MCJ101-405



MCJ101-407



MCJ101-409



MCJ101-SPICE



MCJ101-418



MCJ101-417



MCJ101-419



MCJ101-BLACK

- COTTON BODY, POLYFILL INSULATION
- FRONT ZIPPER CLOSURE, 2 SIDE POCKETS
- SIZES: M/2 L/4 XL/4 2X/2 12 PCS X CASE
- ALSO AVAILABLE IN 3X AND 4X

- COLORS: PRAIRIE GHOST™ (100), NORTHWOODS™ (405), RIDGE GHOST™ (407) BURLY CAMO TAN™ (409), PRYM1 MP™ (413), PREDATOR (417), BIRDS EYE (419), PREYS EYES (418), BLACK, SPICE

BRUSHED COTTON 6 POCKET PANT



BC454-100



BC454-405



BC454-407



BC454-409



BC454-413



BC454-417



BC454-418



BC454-419

SPECS :

- BRUSHED COTTON FABRIC
- BOTTOM LEG TIES
- ZIPPERED FLY
- DOUBLE KNEE
- DOUBLE SEAT
- ADJUSTABLE WAIST
- 2 BACK POCKETS
- 2 FRONT POCKETS
- 2 CARGO POCKETS WITH SECURE BUTTON CLOSURE
- SIZES: S/1 M/2 L/4 XL/3 2X/2 12 PCS X CASE
- ALSO AVAILABLE IN 3X AND 4X
- COLORS: PRAIRIE GHOST™ (100), NORTHWOODS™ (405), RIDGE GHOST™ (407), BURLY CAMO TAN™ (409), PRYM1 MP™ (413), PREDATOR™ (417), PREYS EYES™ (418), BIRD EYES™ (419)

BRUSHED COTTON SHIRTS



BC405-100



BC405-405



BC405-407



BC405-409



BC405-413



BC405-417



BC405-418



BC405-419

SPECS:

- BRUSHED COTTON FABRIC, 2 CHEST FLAP POCKETS, BUTTON SLEEVES
- SIZES: M/2 L/4 XL/4 2X/2 12 PCS X CASE
- ALSO AVAILABLE IN 3X AND 4X
- COLORS: PRAIRIE GHOST™(100), NORTHWOODS™(405) RIDGE GHOST™(407), BURLY CAMO TAN™ (409), PRYM1 MP™(413), PREDATOR™(417), PREYS EYES™(418), BIRD EYES™(419)

COTTON T-SHIRT SHORT/LONG SLEEVE



CTSS-100



CTSS-405



CTSS-409



CTLS-100



CTLS-405



CTLS-409

SPECS :

- COTTON BODY
- FRONT CHEST POCKET
- LONG SLEEVE / SHORT SLEEVE
- SIZES: M/2 L/4 XL/4 2X/2 12 PCS X CASE
- ALSO AVAILABLE IN 3X AND 4X
- COLORS: PRAIRIE GHOST™ (100), NORTHWOODS™ (405), BURLY CAMO TAN™ (409)

COTTON BIB



C510

SPECS:

- COTTON BODY
- ADJUSTABLE ELASTIC SUSPENDERS
- NON-INSULATED
- 2 SPACIOUS SIDE POCKETS
- 2 SIDE ZIPPERS (HIP TO ANKLES)
- 1 ZIPPERED FRONT POCKET
- SIZES : M/2 L/4 XL/4 2X/2
- COLORS: BURLY TAN (409)
- ALSO AVAILABLE IN PLUS SIZES



**POLYESTER/APPAREL
ATHLETIC T-SHIRTS**

BASE LAYER



PF592



CTS-BL-T-409



CTS-BL-P-409

SPECS:

- LIGHT WEIGHT
- MOISTURE WICKING
- MULTI DIRECTIONAL STRETCH
- SOFT AND COMFORTABLE POLYESTER
- SIZES: M/2 L/4 XL/4 2X/2 12 PCS X CASE
- ALSO AVAILABLE IN 3X AND 4X
- COLORS: BURLY TAN™ (409) PRYM1 MP™ (413), BLACK

ATHLETIC WICKING T-SHIRT SHORT SLEEVE



CT-NS-SS-NG-409



CT-NS-SS-NO-409



CT-NS-SS-GP-409



CT-NS-SS-409



CT-NS-SS-413

SPECS :

CT-NS-SS (TOP ROW)

- POLYESTER BODY
- WICKING -MULTI DIRECTIONAL STRETCH
- SHORT SLEEVE
- SIZES: M/2 L/4 XL/4 2X/2 12 PCS X CASE
- ALSO AVAILABLE IN 3X AND 4X
- COLORS: BURLY CAMO TAN™/ NEON ORANGE , BURLY CAMO TAN™ / NEON GREEN, BURLY CAMO TAN™ /GP

CT-NS-SS (BOTTOM ROW)

- MULTI-DIRECTIONAL STRETCH FABRIC
- FOR EASY OF MOVEMENT
- SHORT SLEEVE - WICKING
- SIZES: M/2 L/4 XL/4 2X/2
- 12 PCS X CASE
- ALSO AVAILABLE IN 3X AND 4X
- COLORS: PRYM1 SANDSTORM™(412), PRYM1 MP™ (413) , BURLY CAMO TAN (409)

ATHLETIC WICKING T-SHIRT LONG SLEEVE (1/4 ZIP)



CT-NS-1/4-LS-NS-409 CT-NS-1/4-LS-NO-409 CT-NS-1/4-LS-OP-409 CT-NS-1/4-LS-409-NG CT-NS-1/4-LS-ORG



CT-NS-1/4-LS-414-NG



CT-NS-1/4-LS-417



CT-NS-1/4-LS-418



CT-NS-1/4-LS-419



CT-NS-1/4-LS-BLK-409



CT-NS-1/4-LS-409



CT-NS-1/4-LS-413



CT-NS-1/4-LS-GRN

SPECS :

- POLYESTER BODY
- WICKING - 1/4 ZIP - MULTI DIRECTIONAL STRETCH - LONG SLEEVE
- SIZES: M/2 L/4 XL/4 2X/2 12 PCS X CASE
- ALSO AVAILABLE IN 3X AND 4X

ATHLETIC WICKING T-SHIRT LONG SLEEVE



CT-NS-LS-BLK-LOGO



CT-NS-LS-CHAR-LOGO



CT-NS-BLK-BSH-LOGO



CT-NS-LS-BLK-FISH-LOGO



CT-NS-LS-417



CT-NS-LS-418



CT-NS-LS-419



CT-NS-LS-409



CT-NS-LS-413



CT-NS-LS-ORG



CT-NS-LS-BLK-409

SPECS :

- POLYESTER BODY
- WICKING -MULTI DIRECTIONAL STRETCH - LONG SLEEVE
- SIZES: M/2 L/4 XL/4 2X/2 12 PCS X CASE
- ALSO AVAILABLE IN 3X AND 4X

ATHLETIC WICKING T-SHIRT LONG SLEEVE

NEW !



CT-NS-LS-OB-BLK



CT-NS-LS-TB-BLK



CT-NS-LS-WS-NB-BLK



CT-NS-LS-WS-TB-BLK



CT-NS-LS-1/4-OB



CT-NS-LS-1/4-TB

SPECS :

CT-NS-LS

- POLYESTER BODY
- WICKING
- MULTI DIRECTIONAL STRETCH
- LONG SLEEVE
- SIZES: M/2 L/4 XL/4 2X/2 12 PCS X CASE
- ALSO AVAILABLE IN 3X AND 4X

CT-NS-LS-1/4

- POLYESTER BODY
- WICKING
- MULTI DIRECTIONAL STRETCH
- LONG SLEEVE
- SIZES: M/2 L/4 XL/4 2X/2 12 PCS X CASE
- ALSO AVAILABLE IN 3X AND 4X

ATHLETIC WICKING T-SHIRT LONG SLEEVE

NEW !



CT-NS-LS-CW



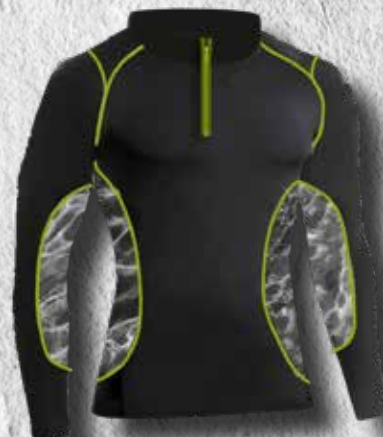
CT-NS-LS-MESH-NW



CT-NS-LS-1/4-BLKW



CT-NS-LS-MESH-BLKW



CT-NS-LS-1/4-NG-BLKW

SPECS :

CT-NS-LS

- POLYESTER BODY
- WICKING
- MULTI DIRECTIONAL STRETCH
- LONG SLEEVE
- SIZES: M/2 L/4 XL/4 2X/2 12 PCS X CASE
- ALSO AVAILABLE IN 3X AND 4X

CT-NS-LS-MESH

- POLYESTER / MESH BODY
- WICKING
- MULTI DIRECTIONAL STRETCH
- LONG SLEEVE
- SIZES: M/2 L/4 XL/4 2X/2 12 PCS X CASE
- ALSO AVAILABLE IN 3X AND 4X

CT-NS-LS-1/4

- POLYESTER BODY
- WICKING
- MULTI DIRECTIONAL STRETCH
- LONG SLEEVE
- SIZES: M/2 L/4 XL/4 2X/2 12 PCS X CASE
- ALSO AVAILABLE IN 3X AND 4X

DOVE MESH VEST



UGV-MESH-90

- POLYESTER BODY + MESH
- FRONT AND BACK LOAD GAME BAGS
- 2 FRONT STORAGE POCKETS WITH ZIPPER



UGV-MESH-409

- SIZES: M/2 L/4 XL/4 2X/2 12 PCS X CASE
- ALSO AVAILABLE IN 3X AND 4X
- COLORS: BLAZE ORANGE, BURLY TAN CAMO

UPLAND GAME VEST



UGV-1

FRONT:



UGV-3

BACK:



UGV-DLX



SPECS:

UGV-DLX

- POLYESTER CANVAS
- FRONT AND BACK LOAD GAME BAGS
- WATER BOTTLE POCKETS, LARGE REAR GAME POCKET
- 2 FRONT STORAGE POCKETS WITH ZIPPER
- SIZES: M/2 L/4 XL/4 2X/2 12 PCS X CASE
- ALSO AVAILABLE IN 3X AND 4X
- COLORS: TAN/BLAZE

UGV

- POLYESTER FABRIC
- FRONT AND BACK LOAD GAME BAGS
- 2 ROWS OF ELASTIC SHELL LOOPS WITH FLAP GUARDS ON BOTH SIDES
- RIGHT AND LEFT, 2 FRONT STORAGE POCKETS WITH ZIPPER
- SIZES: M/2 L/4 XL/4 2X/2 12 PCS X CASE
- ALSO AVAILABLE IN 3X AND 4X
- COLORS: BLAZE ORANGE (1) TAN/BLAZE ORANGE(3)

UPLAND GAME PANTS



UGP

SPECS:

- POLYESTER CANVAS PANT WITH REINFORCED LEGS
- FRONT POCKETS, REINFORCED LEGS
- ABRASION RESISTANT COATED LEGS
- BELT LOOPS
- SIZES: WAIST 30-42 /INSEAM 30 & WAIST 30-42 /INSEAM 32
- ALSO AVAILABLE IN 44 AND 46
- COLORS: KHAKI/TAN

**WATER PROOF
BREATHABLE**



WATERPROOF BREATHABLE PACKABLE RAIN JACKET



WK324-WHT



WK324-86



WK324-90



WK324-91



WK324-404



WK324-409



WK324-413



WK324-417



WK324-418



WK324-419

SPECS :

- PACKABLE
- WATERPROOF / BREATHABLE/ TAPED SEAMS
- 4 POCKET FRONT FEATURES 2 SLASH POCKETS AND 2 LARGE STORAGE POCKETS -ELASTICIZED ADJUSTABLE CUFFS
- SIZES: M/2 L/4 XL/4 2X/2 12 PCS X CASE
- LICENSE TAG HOLDER
- ALSO AVAILABLE IN 3X AND 4X
- COLORS: WHITE CAMO (86) , BLAZE ORANGE (90), ORANGE CAMO (91) , PRYM1 MP™(413) , WATERFOWL (404), BURLY CAMO TAN™ (409) , PREDATOR™(417) , PREDATOR EYES™(418), BIRDS EYES™(419)

WATERPROOF WARP KNIT PACKABLE RAIN PANT



WK350-WHT



WK350-86



WK350-404



WK350-409



WK350-413



WK350-417



WK350-418



WK350-419

SPECS :

- PACKABLE
- WATERPROOF / BREATHABLE / TAPED SEAMS
- 2 WAY LEG ZIPPER WITH SNAP OVERLAY
- 1 BACK POCKET - 2 FRONT SLASH POCKETS WITH ZIPPER PULLS
- SIZES: M/2 L/4 XL/4 2X/2 12 PCS X CASE
- ALSO AVAILABLE IN 3X AND 4X
- COLORS: WHITE CAMO (86), WATERFOWL (404) , BURLY CAMO TAN™ (409), PRYM1™(413), PREDATOR™(417), PREDATOR EYES™(418), BIRDS EYES™(419)

WATERPROOF WARP KNIT PACKABLE RAIN SUIT



WK300-WHT



WK300-86



WK300-404



WK300-409



WK300-413



WK300-417



WK300-418



WK300-419

SPECS:

- PACKABLE
- LICENSE TAG HOLDER
- WATERPROOF / BREATHABLE / TAPED SEAMS
- 4 POCKET FRONT
- FEATURES 2 SLASH POCKETS AND 2 LARGE STORAGE POCKETS
- ELASTICIZED ADJUSTABLE CUFFS
- 2 WAY LEG ZIPPER WITH SNAP OVERLAY
- 1 BACK POCKET - 2 FRONT SLASH POCKETS WITH ZIPPER PULLS
- SIZES: M/2 L/4 XL/4 2X/2 12 PCS X CASE
- ALSO AVAILABLE IN 3X AND 4X

WATERPROOF BREATHABLE INSULATED HOODED JACKET

WARP KNIT (WATER PROOF BREATHABLE)



WK101-404



WK101-405



WK101-407



WK101-409



WK101-413



WK101-417



WK101-418



WK101-419

SPECS :

- POLYESTER WATERPROOF / BREATHABLE / TAPED SEAMS - INSULATED
- FRONT ZIPPER CLOSURE -INSULATED HOOD -2 SIDE POCKETS
- SIZES: M/2 L/4 XL/4 2X/2 12 PCS X CASE TALL: L/2 XL/2 2X/2
- ALSO AVAILABLE IN 3X AND 4X
- COLORS: WATERFOWL(404), NORTHWOODS™(405), RIDGE GHOST™(407), BURLY CAMO TAN™ (409) , PRYM1 MP™(413), PREDATOR™(417) , PREYS EYES™(418), BIRDS EYES™(419)

4-IN-1 SYSTEMS PARKA/ WATERFOWL JACKET



BLACK SHELL



CAMO SHELL

WK407-409



WK420-404

SPECS :

WK407

- POLYESTER WATERPROOF / BREATHABLE / TAPED SEAMS
- 140 GRAMS OF POLYFILL INSULATION
- ZIP OUT REVERSIBLE BLACK/CAMO NYLON INSULATED JACKET
- FRONT ZIP CLOSURE WITH SNAP OVERLAY
- SIZES: M/2 L/4 XL/4 2X/2 12 PCS X CASE
- ALSO AVAILABLE IN 3X AND 4X TALL L/2 XL/2 2X/2
- COLORS: BURLY CAMO TAN™ (409)

WK420

- WATERPROOF / BREATHABLE / TAPED SEAMS
- HOODED -2 SIDE ZIPPER POCKETS
- COMBINATION WARPKNIT WITH WATERPROOF POLAR FLEECE
- KNIT CUFFS, WARP KNIT WATERPROOF/ BREATHABLE
- SIZES: M/2 L/4 XL/4 2X/2 12 PCS X CASE
- ALSO AVAILABLE IN 3X AND 4X
- COLORS: WATERFOWL/BROWN

WATERPROOF BREATHABLE INSULATED HOODED PARKA



WK406-WHT



WK406-404



WK406-409



WK406-413

WATERPROOF BREATHABLE SHERPA LINED HOODED PARKA



WK408-409



WK408-417

SPECS :

WK-406

- POLYESTER WATERPROOF / BREATHABLE
- INSULATED -TAPED SEAMS
- 2 LARGE FRONT CARGO POCKETS WITH DUAL ENTRY
- REMOVABLE HOOD -ADJUSTABLE ELASTICIZED CUFFS
- SIZES: M/2 L/4 XL/4 2X/2 12 PCS X CASE
- ALSO AVAILABLE IN 3X AND 4X TALL L/2 XL/2 2X/2
- COLORS: WATERFOWL (404) , BURLY CAMO TAN™ (409), PRYM1 MP™(413), PREDATOR(417), PREYS EYES (418), BIRDS EYES (419)

WK-408

- POLYESTER WATERPROOF / BREATHABLE
- HOODED PARKA
- FRONT ZIP W/ SNAP OVERLAY
- SHERPA LINED
- 2 CHEST POCKETS
- COLORS: BURLY CAMO TAN™ (409), PREDATOR (417)

WARP KNIT WATERPROOF INSULATED BIB



WK510-I-WHT



WK510-I-404



WK510-I-405

COVERALL VERSION:



WK570-I-409



WK510-I-409



WK510-I-413



WK570-I-WHT

SPECS:

WK-510

- POLYESTER WATERPROOF / BREATHABLE / TAPED SEAMS
- 140 GRAMS OF POLYFILL INSULATION -2 SPACIOUS SIDE POCKETS
- ADJUSTABLE ELASTIC SUSPENDERS WITH BUCKLE CLOSURES
- SIZES: M/2 L/4 XL/4 2X/2 12 PCS X CASE INSEAM 31" ALSO AVAILABLE IN 3X AND 4X
- COLORS: WATERFOWL(404), NORTHWOODS™(405), BURLY CAMO TAN™ (409), PRYM1 MP™(413), ORANGE CAMO(91), BLAZE ORANGE(90) PREDATOR(417), PREYS EYES (418), BIRDS EYES (419)

WK-570

- POLYESTER WATERPROOF / BREATHABLE / TAPED SEAMS
- FRONT CHEST ZIPPER POCKET
- FULL LENGTH ZIPPER THROUGH NECK
- 2 SIDE ZIPPER POCKETS
- SIZES: M/2 L/4 XL/4 2X/2 12 PCS X CASE
- ALSO AVAILABLE IN 3X AND 4X TALL L/2 XL/2 2X/2
- COLORS: BURLY CAMO TAN™ (409)



**REVERSIBLE WATER PROOF
BREATHABLE**

REVERSIBLE GARMENTS



WKR462-409



REVERSIBLE



REVERSE TO BLAZE ORANGE



WKR101-409



REVERSIBLE



REVERSE TO BLAZE ORANGE



C413-REV



REVERSIBLE



REVERSE TO BLAZE ORANGE

SPECS :

WKR462

- POLYESTER WATERPROOF / BREATHABLE / TAPED SEAMS
- INSULATED -REVERSIBLE TO BLAZE ORANGE
- FRONT ZIPPER CLOSURE
- 2 SIDE POCKETS
- SIZES: M/2 L/4 XL/4 2X/2 12 PCS X CASE
- ALSO AVAILABLE IN 3X AND 4X
- COLORS: BURLY TAN™ (409) TO BLAZE ORANGE(90)

WKR-101

- POLYESTER WATERPROOF / BREATHABLE / TAPED SEAMS
- INSULATED -REVERSIBLE TO BLAZE ORANGE
- FRONT ZIPPER CLOSURE - HOODED
- 2 SIDE POCKETS
- SIZES: M/2 L/4 XL/4 2X/2 12 PCS X CASE
- ALSO AVAILABLE IN 3X AND 4X
- COLORS: BURLY TAN™ (409) / TO BLAZE ORANGE(90)

C413-REV

- POLYESTER FLEECE
- FULL LENGTH ZIP THROUGH NECK
- ELASTIC CUFFS
- SIZES: M-2XL
- ALSO AVAILABLE: 3X AND 4X

WATER PROOF BREATHABLE INSULATED REVERSIBLE PARKA



WKR406-409-91



REVERSE TO BLAZE ORANGE



WKR406-409-90



REVERSE TO BLAZE ORANGE

SPECS :

- POLYESTER WATERPROOF / BREATHABLE / TAPED SEAMS
- INSULATED -REVERSIBLE TO BLAZE ORANGE
- REMOVABLE HOOD - ADJUSTABLE ELASTICIZED CUFFS
- 2 LARGE FRONT CARGO POCKETS WITH DUAL ENTRY
- SIZES: M/2 L/4 XL/4 2X/2 12 PCS X CASE
- ALSO AVAILABLE IN 3X AND 4X
- COLORS: BURLY TAN™(409) / TO BLAZE ORANGE(90)
BURLY TAN™(409) / TO ORANGE CAMO(91)

WATER PROOF BREATHABLE INSULATED REVERSIBLE BIB



WKR510-I-409-91



REVERSIBLE



REVERSE TO BLAZE ORANGE



WKR510-I-409-90



REVERSIBLE



REVERSE TO BLAZE ORANGE

SPECS :

- POLYESTER WATERPROOF / BREATHABLE / TAPED SEAMS
- -REVERSIBLE TO BLAZE ORANGE- CARGO POCKETS ON LEGS
- -140 GRAMS OF POLY FILL INSULATION
- ADJUSTABLE ELASTIC SUSPENDERS WITH BUCKLE CLOSURES
- SIZES: M/2 L/4 XL/4 2X/2 12 PCS X CASE INSEAM 30"
- ALSO AVAILABLE IN 3X AND 4X
- COLORS: BURLY TAN™ (409) / TO BLAZE ORANGE(90)
 ,BURLY TAN™ (409) / TO ORANGE CAMO(91)

A man in hunting attire is shown in profile, facing right. He wears a bright orange baseball cap, a brown and orange camouflage jacket, and a bright orange safety vest. A long-barreled rifle is slung over his right shoulder. The background is a blurred natural setting with trees and grass. The text 'BLAZE ORANGE & ORANGE CAMO' is overlaid in white, distressed font across the lower half of the image.

**BLAZE ORANGE &
ORANGE CAMO**

SAFETY COMBO



CP499-ORANGE



CP460-ORANGE



CP900-ORANGE
(ONE SIZE FITS ALL)

SPECS:

- POLYESTER TRICOT BODY
- UNLINED
- 2 SIDE POCKETS
- SIZES: M/L 12EA XL/2XL 12EA 24 PCS X CASE
- ALSO AVAILABLE IN 3X AND 4X
- COLORS: BLAZE ORANGE

SWEATSHIRT

**CHP-90****CHP-91****SPECS :**

- - POLY COTTON BODY
- -2 POCKETS
- -FRONT FULL ZIPPER
- ATTACHED HOOD WITH DRAWSTRINGS
- SIZES: M/2 L/4 XL/4 2X/2 12 PCS X CASE
- ALSO AVAILABLE IN 3X AND 4X
- COLORS: BLAZE ORANGE (90) ORANGE CAMO (91)

FLEECE ZIPPERED JACKET AND VEST



C410-90



C410-91



C410-93



C462-90



C462-91



C462-93

SPECS :

C410

- POLYESTER FLEECE BODY
- 2 SIDE ZIPPER POCKETS
- FULL LENGTH ZIPPER THROUGH NECK
- KNIT WAIST BAND & CUFFS
- SIZES: M/2 L/4 XL/4 2X/2 12 PCS X CASE
- ALSO AVAILABLE IN 3X AND 4X
- COLORS: BLAZE ORANGE (90) ORANGE CAMO (91), WOODLAND ORANGE CAMO(93)

C462

- POLYESTER FLEECE BODY
- 2 SIDE ZIPPER POCKETS
- FULL LENGTH ZIPPER THROUGH NECK
- KNIT WAIST BAND
- SIZES: M/2 L/4 XL/4 2X/2 12 PCS X CASE
- ALSO AVAILABLE IN 3X AND 4X
- COLORS: BLAZE ORANGE (90) ORANGE CAMO (91), WOODLAND ORANGE CAMO(93)

HOODED FLEECE JACKET



C420-90



C420-91



C420-93

SPECS :

- POLYESTER FLEECE BODY
- 2 SIDE ZIPPER POCKETS
- FULL LENGTH ZIPPER THROUGH NECK
- KNIT WAIST BAND & CUFFS, DRAW CORD
- SIZES: M/2 L/4 XL/4 2X/2 12 PCS X CASE
- ALSO AVAILABLE IN 3X AND 4X
- COLORS: BLAZE ORANGE (90), ORANGE CAMO (91), WOODLAND ORANGE CAMO(93)

INSULATED WATERPROOF/BREATHABLE



WK406-90



WK510-I-90



WK406-91



WK510-I-91

SPECS :

WK406

- POLYESTER WATERPROOF / BREATHABLE / TAPED SEAMS
- INSULATED
- 2 LARGE FRONT CARGO POCKETS WITH DUAL ENTRY
- REMOVABLE HOOD
- ADJUSTABLE ELASTICIZED CUFFS
- SIZES: M/2 L/4 XL/4 2X/2 12 PCS X CASE
- ALSO AVAILABLE IN 3X AND 4X
- COLORS: BLAZE ORANGE (90), ORANGE CAMO (91)

WK510

- POLYESTER WATERPROOF / BREATHABLE / TAPED SEAMS
- CARGO POCKETS ON LEGS
- 40 GRAMS OF POLY FILL INSULATION
- ADJUSTABLE ELASTIC SUSPENDERS WITH BUCKLE CLOSURES
- SIZES: M/2 L/4 XL/4 2X/2 12 PCS X CASE
- ALSO AVAILABLE IN 3X AND 4X
- COLORS: BLAZE ORANGE (90), ORANGE CAMO (91)



CONCEALMENT SUITS

LEAFY SUIT & GHILLIE SUIT



MS400



MS500



MS600

SPECS:

COLORS: CAMO , WOODLAND CAMO , DESERT CAMO

- POLYESTER SHELL BODY
- INCLUDES JACKET AND PANT
- FULL ZIP JACKET - CAMO MESH
- SIZES: M/2 L/4 XL/4 2X/2 12 PCS X CASE
- ALSO AVAILABLE IN 3X and 4X



SAFETY APPAREL

REFLECTIVE SAFETY (ANSI RATED)



RHMJ-GRN



RSS-GRN



RCHP-GRN



RLS-GRN

SPECS:

COLORS: 

RSS/RLS

- POLYESTER BODY
- ANSI RATED
- REFLECTIVE TAPE
- 1 FRONT CHEST POCKET
- SIZES: M/2 L/4 XL/4 2X/2 12 PCS X CASE
- ALSO AVAILABLE IN 3X AND 4X
- COLORS: LIME GREEN

RHMJ

- POLYESTER BODY
- ANSI RATED
- QUILTED INSULATION - REFLECTIVE TAPE
- HOODED - FULL FRONT ZIPPER
- SIZES: M/2 L/4 XL/4 2X/2 12 PCS X CASE
- ALSO AVAILABLE IN 3X AND 4X
- COLORS: LIME GREEN

RCHP

- POLYESTER BODY
- ANSI RATED
- QUILTED INSULATION
- REFLECTIVE TAPE
- HOODED - FULL FRONT ZIPPER
- SIZES: M/2 L/4 XL/4 2X/2 12 PCS X CASE
- ALSO AVAILABLE IN 3X AND 4X
- COLORS: LIME GREEN



RUGGED APPAREL

12 OZ. CANVAS CAMO TRIM JACKET



12MCJT-01



12MCJT-08



12MCJT-09

SPECS:

- CANVAS BODY
- 2 SIDE POCKETS
- FULL LENGTH ZIPPER
- INSULATED
- SIZES: M/2 L/4 XL/4 2X/2 12 PCS X CASE
- ALSO AVAILABLE IN 3X AND 4X
- COLORS: BLACK(01) BROWN(08) TAN (09)

CANVAS WORK JACKET



CAN101-GREY



CAN101-BLACK



CAN101-BROWN



CAN101-BARK



CAN101-CHOCOLATE



CAN104-BROWN



CAN104-BLACK



CAN104-CHARCOAL

SPECS :

CAN101

- WASHED 12 OZ. CANVAS BODY
- GUSSETED BI-SWING BACK
- 2 SIDE POCKETS
- FULL LENGTH ZIPPER
- INSULATED
- SIZES: M/2 L/4 XL/4 2X/2 12 PCS X CASE
- ALSO AVAILABLE IN 3X AND 4X
- COLORS: BLACK, BROWN, TAN

CAN104

- WASHED 12 OZ. CANVAS BODY
- POLYESTER REMOVABLE SLEEVES / HOOD (CONTRASTING SLEEVES & HOOD)
- 2 SIDE POCKETS
- FULL LENGTH ZIPPER
- INSULATED
- SIZES: M/2 L/4 XL/4 2X/2 12 PCS X CASE
- ALSO AVAILABLE IN 3X AND 4X
- COLORS: BLACK, BROWN, CHARCOAL

CANVAS SHERPA JACKET



CAN105-BLACK



CAN105-SPICE

SPECS:

- SHERPA LINED
- WASHED 12 OZ. CANVAS BODY
- GUSSETED BI-SWING BACK
- 2 SIDE POCKETS
- FULL LENGTH ZIPPER
- INSULATED
- SIZES: M/2 L/4 XL/4 2X/2 12 PCS X CASE
- ALSO AVAILABLE IN 3X AND 4X
- COLORS: BLACK, SPICE



PLAID APPAREL

SHERPA LINED PLAID JACKET



C409-PRINT



C409-PRINT

SPECS:

- ASSORTED PLAID PRINTS (4)
- FLEECE BODY
- SHERPA LINING
- FULL LENGTH ZIPPER
- 2 SIDE POCKETS
- SIZES: M/2 L/4 XL/4 2X/2 12 PCS X CASE
- ALSO AVAILABLE IN 3X AND 4X
- SEE PAGE 8 FOR CAMO PRINT

PLAID FLEECE BUTTON DOWN SHIRT



FL408



FL408

SPECS :

- ASSORTED PLAID PRINTS (4)
- FLEECE BODY
- PLAID DESIGN
- BUTTON DOWN CLOSURE
- LONG SLEEVES
- SIZES: M/2 L/4 XL/4 2X/2 12 PCS X CASE
- ALSO AVAILABLE IN 3X AND 4X

LADIES HUNTING APPAREL



LADIES BRUSHED COTTON



BC-S-405-409



BC-S-454-409

SPECS:

BC-S-405-409

- BRUSHED COTTON FABRIC
- 2 CHEST FLAP POCKETS
- BUTTON SLEEVES SHIRT TAIL
- SIZES: S/2 M/4 L/4 XL/2 12 PCS X CASE
- COLORS: BURLY CAMO™ (409)

BC-S-454-409

- BRUSHED COTTON FABRIC
- BOTTOM LEG TIES
- DOUBLE KNEE, 6 POCKETS
- SIZES: S/2 M/4 L/4 XL/2 12 PCS X CASE
- COLORS: BURLY CAMO™ (409)

LADIES PERFORMANCE FLEECE



LPFJ-409



LPFP-409

SPECS:

LPFJ-409

- PERFORMANCE FLEECE
- WAFFLE FLEECE LINING
- CHEST ZIPPER 2 SIDE ZIPPERS
- SIZES: S/2 M/4 L/4 XL/2 12 PCS X CASE
- COLORS: BURLY TAN™(409)

LPFP-409

- PERFORMANCE FLEECE
- WAFFLE FLEECE LINING
- CARGO POCKETS
- SIZES: S/2 M/4 L/4 XL/2 12 PCS X CASE
- COLORS: BURLY TAN™(409)

LADIES HOODED FULL ZIP SWEATSHIRT



C421-L-GLACIER



C421-L-PLUM

SPECS :

- POLYCOTTON BODY
- UNLINED
- FRONT POCKETS
- PULLOVER
- SIZES: S/2 M/4 L/4 XL/2 12 PCS X CASE
- COLORS: BURLY TAN™ (409) /GLACIER
- BURLY TAN™ (409) /PLUM

LADIES CANVAS HOODED JACKET



CAN101L-PLUM



CAN101L- BLACK

SPECS :

- WASHED 12 OZ. CANVAS BODY
- 2 SIDE POCKETS
- FULL LENGTH ZIPPER
- INSULATED
- SIZES: S/2 M/4 L/4 XL/2 12 PCS X CASE
- COLORS: BURLY TAN™(409) /GLACIER
- BURLY TAN™ (409) /PLUM

NEW LADIES CAMO

NEW !**CHP-L-NAVY-TB****CHP-L-TB****CHP-L-NB****CHP-L-PB****CT-NS-LS-1/4-PB****SPECS :****CHP**

- POLYESTER BODY
- KANGAROO POCKETS
- PULLOVER
- SIZES: S/2 M/4 L/4 XL/2 12 PCS X CASE & *PLUS SIZE
- COLORS: PINK CAMO, BLUE CAMO

CT-NS-LS-1/4

- POLYESTER BODY
- WICKING
- 1/4 ZIP
- MULTI DIRECTIONAL STRETCH
- LONG SLEEVE
- SIZES: M/2 L/4 XL/4 2X/2 12 PCS X CASE
- ALSO AVAILABLE IN 3X AND 4X

LADIES HOODED SWEATSHIRTS



C422-PLUM/409



C422-L-NEON-PINK



C423-NEONPINK/409



C424-L-PINK-CAMO



C424-L-BLUE SHORE



CHPL-GLACIER



CHPL-COLONIAL BLUE



CHPL-PLUM



CHPL-FUCHSIA

SPECS:

CHPL

- POLYCOTTON BODY
- UNLINED
- FRONT POCKET
- HOODED
- SIZES: S/2 M/4 L/4 XL/2 12 PCS X CASE
- COLORS: BURLY TAN™ (409) /GLACIER
- BURLY TAN™ (409) /PLUM

C422/423/424

- POLYCOTTON BODY
- UNLINED
- FRONT POCKETS
- INSULATED
- SIZES: S/2 M/4 L/4 XL/2 12 PCS X CASE
- COLORS: PLUM W/ DEER OR NEON PINK / CAMO TRIM

YOUTH & KIDS APPAREL



2 PIECE FLEECE SET W/ HANGER



C415-I-401
C415-T-401



C415-I-401
C415-T-401



C415-I-401
C415-T-401

SPECS:

- POLYESTER FLEECE BODY
- HOODED JACKET AND PULL ON PANT
- HANGER INCLUDED
- SIZES: KIDS S/4 M/4 L/4 12 PCS X CASE
- SIZES: INFANTS: 6M/4 12M/4 18M/4
TODDLERS: 2T/4 3T/4 4T/4
TOTAL=24 PCS X CASE
- COLORS: BURLY TAN™ (409) , BURLY TAN™ (409) /FUCHSIA
BURLY TAN™ (409) /GLACIER

WATERPROOF WARP KNIT INSULATED HOODED JACKET



WK101-Y-404



WK101-Y-409

SPECS:

- POLYESTER WATERPROOF / BREATHABLE / TAPED SEAMS - INSULATED
- FRONT ZIPPER CLOSURE -INSULATED HOOD -2 SIDE POCKETS
- SIZES: M/2 L/4 XL/4 2X/2 12 PCS X CASE TALL: L/2 XL/2 2X/2
-

WATERPROOF BREATHABLE INSULATED HOODED PARKA



WK406-Y-404



WK406-Y-409

SPECS:

- POLYESTER WATERPROOF / BREATHABLE / TAPED SEAMS
 - INSULATED
 - 2 LARGE FRONT CARGO POCKETS WITH DUAL ENTRY
 - REMOVABLE HOOD
 - ADJUSTABLE ELASTICIZED CUFFS
- SIZES: S/2 M/4 L/4 XL/2 12 PCS X CASE
 - COLORS: BLAZE ORANGE (90) WATER FOWL (404) BURLY TAN CAMO (409)

WARP KNIT WATERPROOF INSULATED BIB



WK510-I-Y-409



WK510-I-Y-404

SPECS:

- POLYESTER WATERPROOF / BREATHABLE / TAPED SEAMS
- 140 GRAMS OF POLYFILL INSULATION -2 SPACIOUS SIDE POCKETS
- ADJUSTABLE ELASTIC SUSPENDERS WITH BUCKLE CLOSURES
- SIZES: YOUTH: 2/S-- 4/M -- 4/L-- 2/XL

YOUTH AND KIDS WASHED 12 OZ. CANVAS JACKETS



**CAN101-Y-GREY
CAN101-K-GREY
CAN101-T-GREY**



**CAN101-Y-BLACK
CAN101-K-BLACK
CAN101-T-BLACK**



**CAN101-Y-BROWN
CAN101-K-BROWN
CAN101-T-BROWN**



**CAN101-Y-BARK
CAN101-K-BARK
CAN101-T-BARK**



**CAN101-Y-CHOCOLATE
CAN101-K-CHOCOLATE
CAN101-T-CHOCOLATE**



**CAN101-Y-PLUM
CAN101-K-PLUM
CAN101-T-PLUM**

SPECS:

- WASHED 12 OZ. CANVAS BODY
- GUSSETED BI-SWING BACK
- 2 SIDE POCKETS
- FULL LENGTH ZIPPER
- INSULATED
- SIZES: YOUTH: 2/S-- 4/M -- 4/L-- 2/XL
KIDS: 4/S-- 4/M -- 4/L
TODDLER: 4/2T-- 4/3T -- 4/4T
-

COTTON BIB OVERALLS



BC300-I
BC300-T



BC200-I-409
BC200-T-409

SPECS :

- COTTON BODY
- UNLINED
- SIZES: INFANTS: 6M/4 12M/4 18M/4
TODDLERS: 2T/4 3T/4 4T/4
TOTAL=24 PCS X CASE
- COLORS: BURLY CAMO™ (401)

SUEDE FLEECE GARMENT



C410-Y-409
C410-K-409
C410-T-409



C420-Y-409
C420-K-409
C420-T-409



C462-Y-409
C462-K-409
C462-T-409

SPECS :

C410-409

- SUEDE FLEECE BODY
- 2 SIDE ZIPPER POCKETS
- FULL LENGTH ZIPPER THROUGH NECK
- KNIT CUFFS AND WAIST BAND
- SIZES: YOUTH: 2/S-- 4/M -- 4/L-- 2/XL
 KIDS: 4/S-- 4/M -- 4/L
 TODDLER: 4/2T-- 4/3T -- 4/4T
- COLORS: BURLY TAN™(409)
- AVAILABLE IN BOY SIZES
- C410Y, C410K, C410T

C420-409

- SUEDE FLEECE BODY
- 2 SIDE ZIPPER POCKETS
- FULL LENGTH ZIPPER
- KNIT CUFFS AND WAIST BAND, DRAW CORD
- SIZES: YOUTH: 2/S-- 4/M -- 4/L-- 2/XL
 KIDS: 4/S-- 4/M -- 4/L
 TODDLER: 4/2T-- 4/3T -- 4/4T
- COLORS: BURLY TAN™(409)
- AVAILABLE IN BOY SIZES
- C420Y, C420K, C420T

C462-409

- SUEDE FLEECE BODY
- 2 SIDE ZIPPER POCKETS
- FULL LENGTH ZIPPER THROUGH NECK
- SIZES: YOUTH: 2/S-- 4/M -- 4/L-- 2/XL
 KIDS: 4/S-- 4/M -- 4/L
 TODDLER: 4/2T-- 4/3T -- 4/4T
- COLORS: BURLY TAN™(409)
- AVAILABLE IN BOY SIZES
- C462Y, C462K, C462T 45

CAMO APPAREL



C450-Y-409
C450-K-409
C450-T-409



MCJ101-Y-409
MCJ101-K-409
MCJ101-T-409

SPECS:

C450

- SUEDE FLEECE BODY
- 2 FRONT PATCH POCKETS
- ELASTIC WAIST
- SIZES: M/2 L/4 XL/4 2X/2 12 PCS X CASE
- ALSO AVAILABLE IN PLUSE SIZES
- COLORS: BURLY TAN™(409)
- AVAILABLE IN BOY SIZES
- C450Y, C450K, C450T

MCJ101

- COTTON BODY, POLYFILL INSULATION
- FRONT ZIPPER CLOSURE, 2 SIDE POCKETS
- SIZES: YOUTH: 2/S-- 4/M -- 4/L-- 2/XL
- KIDS: 4/S-- 4/M -- 4/L
- TODDLER: 4/2T-- 4/3T -- 4/4T
- ALSO AVAILABLE IN 3X AND 4X
- COLORS: BURLY TAN CAMO™(409)

BRUSHED COTTON APPAREL



BC454-Y-409
BC454-K-409



BC-405-Y-409



CTSS-Y-409
CTSS-K-409
CTSS-T-409

CTSL-Y-409
CTSL-K-409
CTSL-T-409

SPECS:

- BRUSHED COTTON FABRIC, 2 CHEST FLAP POCKETS, BUTTON SLEEVES
- SIZES: YOUTH: 2/S-- 4/M -- 4/L-- 2/XL
- SIZES: KIDS: 4/S-- 4/M -- 4/L
- COLORS: BURLY TAN CAMO™ (409)

YOUTH AND KIDS BLAZE ORANGE APPAREL



C410-Y-90
C410-K-90



C410-Y-93
C410-K-93



C462-Y-90
C462-K-90



C462-Y-91
C462-K-91



C462-Y-93
C462-K-93



C420-Y-90
C420-K-90



C420-Y-91
C420-K-91



C420-Y-93
C420-K-93

SPECS :

C410

- POLYESTER FLEECE BODY
- 2 SIDE ZIPPER POCKETS
- FULL LENGTH ZIPPER THROUGH NECK
- KNIT WAIST BAND & CUFFS
- SIZES: YOUTH: 2/S-- 4/M -- 4/L-- 2/XL
- COLORS: BLAZE ORANGE (90) ORANGE CAMO (91), WOODLAND ORANGE CAMO(93)

C462

- POLYESTER FLEECE BODY
- 2 SIDE ZIPPER POCKETS
- FULL LENGTH ZIPPER THROUGH NECK
- KNIT WAIST BAND
- SIZES: YOUTH: 2/S-- 4/M -- 4/L-- 2/XL
- COLORS: BLAZE ORANGE (90) ORANGE CAMO (91), WOODLAND ORANGE CAMO(93)

C420

- POLYESTER FLEECE BODY
- 2 SIDE ZIPPER POCKETS
- FULL LENGTH ZIPPER THROUGH NECK
- KNIT WAIST BAND & CUFFS, DRAW CORD
- SIZES: YOUTH: 2/S-- 4/M -- 4/L-- 2/XL
- COLORS: BLAZE ORANGE (90) ORANGE CAMO (91), WOODLAND ORANGE CAMO(93)

YOUTH BLAZE ORANGE APPAREL



WK510-I-Y-90



CHP-Y-90



WK406-Y-90

SPECS :

WK510

- POLYESTER WATERPROOF / BREATHABLE / TAPED SEAMS
- CARGO POCKETS ON LEGS
- 40 GRAMS OF POLY FILL INSULATION
- ADJUSTABLE ELASTIC SUSPENDERS WITH BUCKLE CLOSURES
- SIZES: YOUTH: 2/S-- 4/M -- 4/L-- 2/XL
- COLORS: BLAZE ORANGE (90), ORANGE CAMO (91)

CHP

- - POLY COTTON BODY
- -2 POCKETS
- -FRONT FULL ZIPPER
- ATTACHED HOOD WITH DRAWSTRINGS
- SIZES: YOUTH: 2/S-- 4/M -- 4/L-- 2/XL
- COLORS: BLAZE ORANGE (90) ORANGE CAMO (91)

WK-406

- POLYESTER WATERPROOF / BREATHABLE
- INSULATED -TAPED SEAMS
- 2 LARGE FRONT CARGO POCKETS WITH DUAL ENTRY
- REMOVABLE HOOD
- -ADJUSTABLE ELASTICIZED CUFFS
- SIZES: YOUTH: 2/S-- 4/M -- 4/L-- 2/XL

YOUTH WICKING T-SHIRT LONG SLEEVE



CT-NS-LS-Y-409



CT-NS-LS-Y-413



CT-NS-LS-Y-417



CT-NS-LS-Y-418



CT-NS-LS-Y-419

SPECS :

- POLYESTER BODY
- WICKING -MULTI DIRECTIONAL STRETCH
- LONG SLEEVE
- SIZES: YOUTH: 2/S-- 4/M -- 4/L-- 2/XL
- COLORS: BURLY CAMO TAN™(409) , PRYM1 MP(413) , PREDATOR™(417) PREDATOR EYES™(418) BIRDS EYES™(419)



ACCESSORIES

SC-900-409



SC-900-401



SC-900

NAME: CAMOUFLAGE COTTON CAP

COLORS: BURLY TAN™ (409)/(401)

- FEATURES:**
- 6 PANEL MEDIUM PROFILE
 - SIDE VENTS
 - BRASS BUCKLE ADJUSTMENT
 - PACKED 12 PC CASE PER COLOR.

CC-900-90

NAME: CAMOUFLAGE COTTON CAP

COLORS: BLAZE ORANGE (90)

- FEATURES:**
- 6 PANEL MEDIUM PROFILE
 - SIDE VENTS
 - BRASS BUCKLE ADJUSTMENT
 - PACKED 12 PC CASE PER COLOR.



C-952-NG



C-952-NB

C-952

NAME: BEANIE HAT

COLORS: GREEN (NG) & BROWN (NB)

- FEATURES:**
- NON PILL FLEECE
 - 3 LAYER W/ MEMBRANE
 - PACKED 12 PC CASE PER COLOR.

C-950

NAME: FLEECE BALACLAVA

COLORS: BURLY CAMO™ (401)&BLACK (01)

- FEATURES:**
- NON PILL FLEECE
 - ELASTIC DRAW STRING
 - DRIES QUICKLY
 - FACE & NOSE PANEL
 - MACHINE WASHABLE
 - PACKED 12 PC CASE PER COLOR.



C-950



C-950-BLK



C-951

NAME: BALACLAVA

COLORS: GREEN (NG) & BROWN (NB)

- FEATURES:**
- NON PILL FLEECE
 - DRIES QUICKLY
 - FACE & NOSE PANEL
 - MACHINE WASHABLE
 - PACKED 12 PC CASE PER COLOR.

CAMOUFLAGE COTTON CAPS

NAME: CAMOUFLAGE COTTON CAP

COLORS: Snow Ghost™(SG) Prairie Ghost™ (100)
Northwoods™ (405) Ridge Ghost™(407)

- FEATURES:**
- 6 PANEL BASEBALL CAP
 - BRASS BUCKLE ADJUSTMENT
 - PACKED 12 PC CASE PER COLOR.



601-RGU



701-WDG



201-SG



501-PG



GV-537-NG/NB

NAME: CAMOUFLAGE LINED GLOVES

COLORS: GREEN (NG) & BROWN (NB)

FEATURES:

- WARPKNIT FABRIC
- NEOPRENE GRIPPER FINGER & PALMS
- QUIET CLOTH
- ADJUSTABLE WRIST
- COLORS: - BROWN CAMO(NB)
- GREEN CAMO (NG)
- PACKED 12 PC CASE PER COLOR.

GV-538-NB/NG

NAME: CAMOUFLAGE GLOMIT

COLORS: GREEN (NG) & BROWN (NB)

FEATURES:

- WARM WARPKNIT FABRIC
- LINED
- COLORS: - BROWN CAMO(NB)
- GREEN CAMO (NG)
- PACKED 12 PC CASE PER COLOR.



GV-539-NG/NB

NAME: CAMOUFLAGE INSULATED GLOVES

COLORS: BROWN CAMO(NB) GREEN CAMO(NG)

- FEATURES:**
- WARM WARPKNIT FABRIC,
 - 3 LAYER
 - THERMAL INSULATION
 - QUIET
 - WATER RESISTANT FABRIC
 - COLORS: - BROWN CAMO(NB)
 - GREEN CAMO (NG)
 - PACKED 12 PC CASE PER COLOR.

ANTI MOSQUITO/ PVC RAIN SUIT



PRS4500



PRS4700



AB-04R09-04



SC-490-CAMO

PRS

- PVC TAPED SEAMS SHELL
- 2 PC SET PANT AND JACKET
- PACKABLE
- SIZES: M/2 L/4 XL/4 2X/2 12 PCS X CASE
- ALSO AVAILABLE IN 3X AND 4X
- COLORS: BURLY CAMO™ (401) PRS4500, OD GREEN (PRS4700)

SC/AB

- POLYESTER
- WATERPROOF
- FULLY ADJUSTABLE SHOCK CORD
- DURABLE AND BURR PROOF
- COLORS: BURLY CAMO
- PACKED 12 PC CASE PER COLOR



▲ C911-409

- 2 WATER BOTTLE POCKETS
- 850 CUBIC INCH
- AIR TRACK SUSPENSION SYSTEM
- 6 PCS X CASE
- COLORS: BURLY TAN™ (409)



▲ C913-409

- QUIET FABRIC
- 900 CUBIC INCH
- AIR TRACK SUSPENSION SYSTEM
- HYDRATION COMPATIBLE
- SIZE: 20"X10"X6"
- 6 PCS X CASE
- COLORS: BURLY TAN™ (409) PRYM1 SANDSTORM™ (412) PRYM1 MP™(413)



▲ C913-413

- QUIET FABRIC
- 900 CUBIC INCH
- AIR TRACK SUSPENSION SYSTEM
- HYDRATION COMPATIBLE
- SIZE: 20"X10"X6"
- 6 PCS X CASE
- COLORS: BURLY TAN™ (409) PRYM1 SANDSTORM™ (412) PRYM1 MP™(413)



▲ C915-409

- QUIET FABRIC
- 1900 CUBIC INCH
- SIZE 23"X14"X10"
- 6 PCS X CASE
- UNIQUE FRAME DESIGN
- PROVIDES AIR VENTILATION SYSTEM
- COLORS: BURLY TAN™ (409) PRYM1 MP™(413)



▲ C915-413

- QUIET FABRIC
- 1900 CUBIC INCH
- SIZE 23"X14"X10"
- 6 PCS X CASE
- UNIQUE FRAME DESIGN
- PROVIDES AIR VENTILATION SYSTEM
- COLORS: BURLY TAN™ (409) PRYM1 MP™(413)



▲ C705-90

- SADDLE CLOTH BODY
- FRONT ZIPPER POCKET
- WATER BOTTLE MESH POCKET
- SILENT TOUGH LAMINATED FABRIC
- COLORS: BLAZE ORANGE (90)
- PACKED 12 PC CASE



▲ C800-C

- SADDLE CLOTH BODY
- ZIPPERED FRONT POCKET
- BURR PROOF
- COMPRESSION STRAPS 12 PCS X CASE
- COLORS: BURLY TAN™(409) PRYM1 BLACKOUT™(414)



▲ C900-C

- SADDLE CLOTH BODY
- ZIPPERED FRONT POCKET
- BURR PROOF
- COMPRESSION STRAPS 12 PCS X CASE
- COLORS: BURLY TAN™(409) PRYM1 BLACKOUT™(414)

**TB-010-GREEN****TB-010-COYOTE****TB-010-BLACK**

▲ TB-010-

- 1000 DENIER COVER
- 3 LITER WATER BLADDER (INCLUDED)
- WIDE MOUTH OPENING
- FOAM INSULATED WRAPPED TUBE
- COLORS:BLACK -COYOTE - OD GREEN
- PACKED 12 PC CASE PER COLOR.

▲ TB-011

- WATER BOTTLE HOLDER
- ZIPPERED OUTSIDE POCKET
- SHOULDER STRAPS
- DRAWSTRING CLOSURE
- COLOR: BLACK, COYOTE



▲ TB-311

- HYDRATION COMPATIBLE
- 600 DENIER POLYESTER
- MULTIPLE COMPARTMENTS
- COLOR: OD GREEN

**TB-511-BLACK****TB-511-OD GREEN****TB-511-COYOTE**

▲ TB-511-

- 1000 DENIER COVER
- ZIPPERED FRONT POCKETS
- HYDRATION COMPATIBLE
- SHOULDER STRAPS
- PACKED 6 PC CASE PER COLOR.

TB-621-COYOTE



TB-621-BLACK



TB-621-

- 1000 DENIER COVER
- ZIPPERED TOP ACCESS
- MULTI COMPARTMENTS
- COLORS: - COYOTE - BLACK
- PACKED 5 PC CASE PER COLOR.

TB-711

- 600 DENIER POLYESTER
- MULTIPLE COMPARTMENTS
- PADDED SHOULDER STRAPS
- PADDED COMPUTER POCKET
- COLOR: BLACK



TB-880-BLACK



TB-880-OD GREEN



TB-880-COYOTE

TB-880-

- 55 LITER FABRIC 1680 D. POLYESTER + 210 D LINING
- FEATURES: 2 REMOVABLE POCKETS
- FREEDOM AIR MESH BACK SYSTEM
- MAIN COMPARTMENT WITH 9 OUTSIDE POCKETS
- 2 WATER BOTTLE POCKETS
- PADDED WAIST BELT PACKED: 4 PCS X CASE
- COLOR: BURLY TAN™ (409) PRYM1 MPT™(413)



TB-911

- COVERT PACK
- 600 DENIER POLYESTER
- HYDRATION COMPATIBLE
- MULTIPLE COMPARTMENTS
- PADDED SHOULDER STRAPS
- PISTOL SIDE POCKETS
- COLOR: MELANGE GREEN



▲ SSP-COOL 2 SIZES: 12L OR 30L) ▲ C600

- SOFT SIDED COOLER
- COLORS: CAMO
- RF WELDED SEAMS, DOUBLE LAMINATION



- SADDLE CLOTH BODY
- DOUBLE ZIPPER MAIN COMPARTMENT FOR EASY ACCESS.
- 3 SIDE CLIP POCKETS
- ADJUSTABLE SHOULDER STRAP
- SIZE: (L) 18" X (W) 8" X (H) 9"



▲ SS-COOL-GREY (15L OR 20 L) ▲ SS-COOL-CAMO (15L OR 20 L)

- HARD TOP COOLER
- COLORS: GREY & CAMO
- SIZE: 20 LITER (14" X 13" X 14") [**11 HOUR COOL TIME**]
15 LITER (18" X 10" X 11") [**11 HOUR COOL TIME**]
- RF WELDED SEAMS, DOUBLE LAMINATION



- HARD TOP COOLER
- COLORS: GREY & CAMO
- SIZE: 20 LITER (14" X 13" X 14") [**11 HOUR COOL TIME**]
15 LITER (18" X 10" X 11") [**11 HOUR COOL TIME**]
- RF WELDED SEAMS, DOUBLE LAMINATION



▲ XHB-BLADDER

- 2 LITER CAPACITY
- 3FT HYDRATION HOSE
- BITE VALVE SYSTEM
- WIDE MOUTH FULL CAP



▲ Q-0-LOUNGE-

- POLYESTER BODY - HEAVY DUTY STEEL FRAME
- CUP HOLDER INCLUDED - 2PCS X CASE
- COLORS: BURLY CAMO™ (CAMO) PINK CAMO (PNK)
- ALSO AVAILABLE IN OTHER COLORS



QAC-PNK

QAC-CAMO



QAC-BIG BOY-409

QAC-BIG BOY-PINK CAMO

▲ QAC-

- POLYESTER BODY -
- STEEL FRAME
- CARRY BAG INCLUDED - 6PCS X CASE
- COLORS: BURLY CAMO™ (CAMO) PINK TRIM BURLY CAMO™ (PINK CAMO) PINK CAMO (PNK)

▲ QAC-BIG BOY

- POLYESTER BODY
- HEAVY DUTY STEEL FRAME
- CARRY BAG INCLUDED - 4PCS X CASE
- COLORS: BURLY CAMO™ (CAMO) BURLY TAN™(409) , PRYM1 BROWN™(412)

**Q-STOOL-409****Q-STOOL-BLK****Q-TRI-01****Q-TRI-409**

▲ Q-STOOL-

- POLYESTER BODY -
- STEEL FRAME
- CARRY BAG INCLUDED - 20PCS X CASE
- COLORS: BURLY CAMO™ (CAMO) PRYMAL MP (413)
- ALSO AVAILABLE IN GREEN, BLACK AND BLUE

▲ Q-TRI-

- POLYESTER BODY
- STEEL FRAME
- CARRY BAG INCLUDED
- 10PCS X CASE
- COLORS: BURLY TAN™ (409) BLACK (01)

**409****BLK**

▲ Q-SWIVEL-STOOL

- POLYESTER BODY
- STEEL FRAME
- 360 DEGREE 13"X13"X17"H
- CARRY BAG INCLUDED
- 20PCS X CASE
- COLORS: BURLY CAMO TAN™ (409) BLACK (01)

▲ Q-SWIVEL-RND-SEAT

- POLYESTER BODY
- STEEL FRAME
- 360 DEGREE
- ROUNDED PADDED SEAT
- EASY TO CARRY
- COLORS: BURLY CAMO TAN™ (409)



▲ Q-DIR-TAB-COOL-CAMO

- POLYESTER BODY
- HEAVY DUTY STEEL FRAME
- SIDE TABLE / CUP HOLDER
- ATTACHED COOLER
- CAMO PATTERN



▲ Q-DIR-TABLE-CAMO

- POLYESTER BODY
- HEAVY DUTY STEEL FRAME
- SIDE TABLE / CUP HOLDER
- CAMO PATTERN



409

▲ Q-SWIVEL-BACKREST

- POLYESTER BODY
- STEEL FRAME
- 360 DEGREE
- PADDED SEAT AND BACK REST
- 14" X 18" X 31" H
- COLORS: BURLY CAMO TAN™ (409) BLACK (01)



BLK



▲ Q-COT-CAMO

- POLYESTER BODY
- HEAVY DUTY ALUMINUM FRAME
- CARRY BAG INCLUDED
- 4PCS X CASE
- COLORS: BURLY CAMO™ (CAMO)
- ALSO AVAILABLE IN GREEN



▲ HB-8205

- POLYESTER BODY
- 150 D BLACK COATED
- 58"X58" X 57"
- COLORS: CAMOUFLAGE
- 4 PCS X CASE



▲ HB-8203

- POLYESTER BODY
- 58"X58" X 64"
- 150 D BLACK COATED
- COLORS: BURLY TAN™ (409)
- 4 PCS X CASE



▲ HB-8222

- POLYESTER BODY
- 72"X 72" X 65" (HUB TO HUB)
- 150 D BLACK COATED
- 2 PCS X CASE
- REMOVABLE TOP
- COLORS: BURLY TAN™ (409)



EASY GLIDERS:



OPEN WINDOW:



CLOSED WINDOW:



▲ HB-8223 (1 MAN)

- 60 X 60 X 64 (HUB TO HUB)
- POLYESTER BODY
- 150 D BLACK COATED
- EASY GLIDE ADJUSTABLE WINDOWS
- GARAGE DOOR OPENING
- COLORS: BURLY TAN

HB-8224 (3MAN)

NEW!



EASY GLIDERS:



OPEN WINDOW:



CLOSED WINDOW:



SPECS:

- 87 X 87 X 72 (HUB TO HUB)
- POLYESTER BODY
- 150 D BLACK COATED
- EASY GLIDE ADJUSTABLE WINDOWS
- GARAGE DOOR OPENING
- COLORS: BURLY TAN

HB-8225-HEX



NEW!

EASY GLIDERS:



OPEN WINDOW:



CLOSED WINDOW:



HB-8225-HEX

- 93 X 103 X 72 (HUB TO HUB)
- POLYESTER BODY
- 150 D BLACK COATED
- EASY GLIDE ADJUSTABLE WINDOWS
- GARAGE DOOR OPENING
- COLORS: BURLY TAN



B-PVC-020-ODGRN



B-PVC-020-BLACK

▲ **B-PVC-020**

- PVC/NITRIL MATERIAL-POLYESTER LINING
- **PLAIN TOE**
- WATERPROOF
- USE FOR WORK,FARMING, GARDENING, ETC.
- 12 PCS X CASE
- COLORS: OD GREEN OR BLACK
- AVAILABLE SIZES: 8-13
- 1/8, 3/9, 3/10, 3/11, 2/12, 1/13

▲ **B-RB-005-BLACK**

- PVC/NITRIL MATERIAL-POLYESTER LINING
- **STEEL TOE**
- WATERPROOF
- USE FOR WORK,FARMING, GARDENING, ETC.
- 12 PCS X CASE
- COLORS: OD GREEN OR BLACK
- AVAILABLE SIZES: 8-13
- 1/8, 3/9, 3/10, 3/11, 2/12, 1/13



B-RB-408-B-409
B-RB-408-Y-409



B-RB-408-B-417

▲ **B-RB-408B**

- NATURAL RUBBER, 5MM NEOPRENE UPPER
 - V GUSSET SIDE ZIPPER (ADULTS ONLY)
 - COLORS: PREDATOR 417
 - WATERPROOF , 2 TONE MOLDED OUTSOLE
 - USE FOR HUNTING, FISHING ,FARMING, GARDENING, ETC.
 - 12 PCS X CASE
 - AVAILABLE SIZES:
- | | |
|-------------|----------------------------------|
| 8-13 MENS | 1/8, 3/9, 3/10, 2/11, 2/12, 1/13 |
| 5-10 LADIES | 1/5, 2/6, 3/7, 3/8, 2/9, 1/10 |
| 4-7 YOUTH | 3/4, 3/5, 3/6, 3/7 |



RB-408-L-FUCHSIA
RB-408-Y-FUCHSIA



RB-408-L-FUCHSIA
RB-408-Y-FUCHSIA

▲ **B-RB-408L**

- NATURAL RUBBER, 5MM NEOPRENE UPPER
 - V GUSSET SIDE ZIPPER (ADULTS ONLY)
 - COLORS: BURLY TAN™(409) BURLY TAN™(409)/FUCHSIA TRIM BURLY TAN™(409)/GLACIER TRIM
 - WATERPROOF , 2 TONE MOLDED OUTSOLE
 - USE FOR HUNTING, FISHING ,FARMING, GARDENING, ETC.
 - 12 PCS X CASE
 - AVAILABLE SIZES:
- | | |
|-------------|----------------------------------|
| 8-13 MENS | 1/8, 3/9, 3/10, 2/11, 2/12, 1/13 |
| 5-10 LADIES | 1/5, 2/6, 3/7, 3/8, 2/9, 1/10 |
| 4-7 YOUTH | 3/4, 3/5, 3/6, 3/7 |



▲ B-RB-CAMO

- NATURAL RUBBER, 5MM NEOPRENE UPPER
- ADJUSTABLE STRAP AND V-GORE GUSSET
- - WATERPROOF
- - USE FOR HUNTING, FISHING ,FARMING, GARDENING, ETC.
- 12 PCS X CASE
- AVAILABLE SIZES: 8-13
- 1/8, 3/9, 3/10, 2/11, 2/12, 1/13



B-RB-405-OD GRN



B-RB-405-BLACK

▲ B-RB-405- B-RB-405Y-

- NATURAL RUBBER, 5MM NEOPRENE UPPER
- ADJUSTABLE STRAP AND V-GORE GUSSET
- - WATERPROOF
- - USE FOR HUNTING, FISHING ,FARMING, GARDENING, ETC.
- 12 PCS X CASE
- COLORS: OD GREEN , BLACK
- AVAILABLE SIZES: 8-13
- 1/8, 3/9, 3/10, 2/11, 2/12, 1/13



▲ B-RB-407-Y/K-CAMO

- MATERIAL-NATURAL RUBBER NEOPRENE UPPER
- PLAIN TOE
- - WATERPROOF - CAMO TOP
- - USE FOR WORK,FARMING, GARDENING, ETC.
- 12 PCS X CASE
- COLORS: BLACK / CAMOUFLAGE BOTTOM
- AVAILABLE SIZES: 4-7 YOUTH
12-3 KIDS



FUCHSIA



GLACIER

▲ B-RB-006-K-

- MATERIAL-NATURAL RUBBER
- PLAIN TOE
- - WATERPROOF -PULL LOOPS
- - USE FOR WORK,FARMING, GARDENING, ETC.
- 12 PCS X CASE
- COLORS: FUCHSCIA GLACIER
- AVAILABLE SIZES: 12-3 KIDS 3/12, 3/1, 3/2, 3/3

B-RB-406-Y/K- ▶

- NATURAL RUBBER,
- 5MM NEOPRENE UPPER
- GUSSET
- COLORS: -BLUE -GREEN -RED -PURPLE
- - WATERPROOF
- -2 TONE MOLDED OUTSOLE
- - USE FOR HUNTING,
- FISHING ,
- FARMING,
- GARDENING, ETC.
- 12 PCS X CASE
- AVAILABLE SIZES: 4-7 YOUTH 3/4, 3/5, 3/6, 3/7
- 12-3 KIDS 3/12, 3/1, 3/2, 3/3



BLUE



OD GREN



RED



PURPLE



◀ B-RB-FIRE-K

- MATERIAL-NATURAL RUBBER
- PLAIN TOE
- WATERPROOF
- PULL LOOPS
- USE FOR WORK,FARMING, GARDENING, ETC.
- 12 PCS X CASE
- COLORS: BLACK/FUCHSCIA TRIM BLACK/GLACIER TRIM
- AVAILABLE SIZES: 5-10 1/5, 2/6, 3/7, 3/8, 2/9, 1/10

B-RB-405-L-BLK ▶

- NATURAL RUBBER, 5MM NEOPRENE UPPER
- ADJUSTABLE STRAP AND V-GORE GUSSET
- - WATERPROOF
- - USE FOR HUNTING, FISHING ,FARMING, GARDENING, ETC.
- 12 PCS X CASE
- COLORS: BLACK
- AVAILABLE SIZES: 5-10
- 1/5, 2/6, 3/7, 3/8, 2/9, 1/10



SIZE AND CASE PACK DESCRIPTIONS

F.Y.I.

WARRANTY

ALL ITEMS COME WITH A ONE YEAR MANUFACTURER DEFFECTIVE WARRANTY
FROM DATE OF ORIGINAL PURCHASE FROM WORLD FAMOUS SPORTS

The Construction: Unless noted otherwise all of our insulated or slightly insulated garments come with the following

*3X-4X 10%

*5X-8X 20%

CASE PACK:

- Men's, Ladies, Junior's, Preschool, Toddler, and Infants are packed 12 pieces per carton.
- Plus Size (2-4X for Men and 1X-3X for Women) are packed 6 pieces per carton.
- Men's and Ladies Pant and Jackets come solid color per case, unless otherwise noted.
- Junior's, Preschool, Toddler, and Infant Jackets come assorted colors and sizes
- Junior's, Preschool, Toddler, and Infants Pants come in solid color case pack

CLOTHING ASSORTMENT SIZING SCALE:

MENS	M/2, L/4, XL/4, 2XL/2
MEN PANT	S/1, M/2, L/4, XL/3, 2XL/2
PLUS SIZE MENS	3X/3, 4X/3
LADIES	S/2, M/4, L/4, XL/2
LADIES PLUS	1X/3, 2X/2, 3X/1
YOUTH (8-18)	S/2 M/4 L/4 XL/2
KIDS (4-7)	S/4 M/4 L/4
TODDLER (2T-4T)	2T/4 3T/4 4T/4
INFANT	6M/4 12M/4 18M/4

BOOTS ASSORTMENT SIZING SCALE:

KIDS: 3/12, 3/1, 3/2, 3/3

YOUTH: 3/4, 3/5, 3/6, 3/7

WOMENS ASST: 1EA 5, 2/6, 3/7, 3/8, 2/9, 1/10

MENS ASST: 1EA 8, 3EA 9&10, 2/11, 2/12, 1/13

**TO ORDER CONTACT YOUR AREA REPRESENTATIVE
or call us toll free 800-848-9848**

WORLD FAMOUS SPORTS
687 ANITA ST.
Chula Vista, Ca. 91911
PH. 619-231-4800 FAX 619-231-1717
WORLDFAMOUSSPORTS.COM

NOTES

NOTES

NOTES

TO ORDER CONTACT YOUR AREA REPRESENTATIVE
or call us toll free 800-848-9848

687 ANITA ST.
Chula Vista, CA. 91911
PH. 619-231-4800 FAX 619-231-1717

WWW.WORLDFAMOUSSPORTS.COM

