

HOLIDAY **HK** KITCHENS

2019 DOOR BROCHURE & STYLE GUIDE



DREAM IT. LIVE IT.

# TABLE OF CONTENTS

History of Holiday Kitchens.....1

Framed Construction.....2

Frameless Construction.....3

Drawer Box Options/Guides.....4

Wood Species.....5-6

Wood Stains.....7

Paints.....8

Glaze Options.....9

Specialty Finish.....10

Vintage Artistry.....11-12

Doors.....13-26

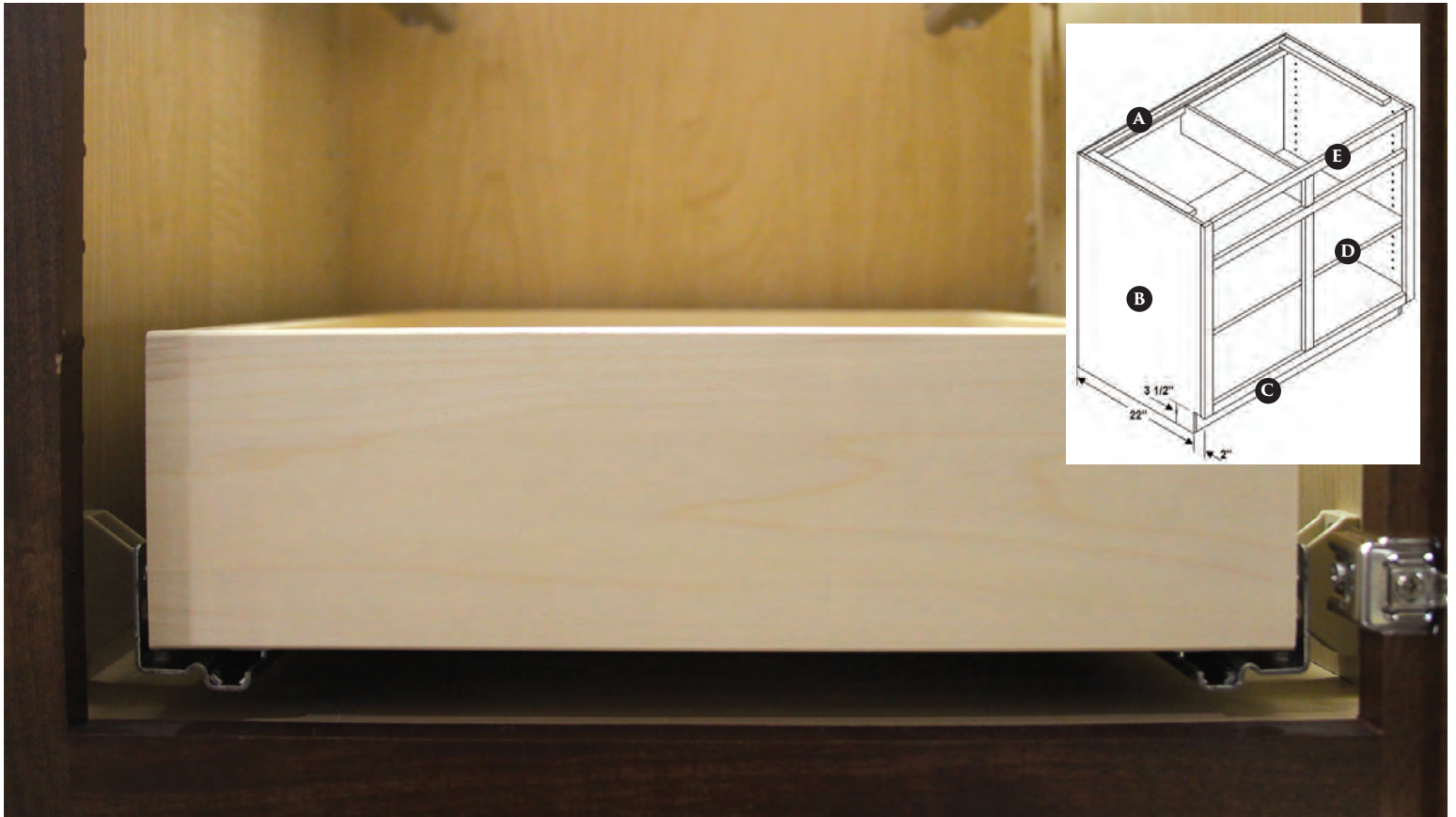


## OUR STORY

Located in Rice Lake, Wisconsin  
 Established in 1946  
 Founded by 3 Johnston brothers in the post-war boom era  
 Single private owner since 2012  
 Commitment to innovation and improving manufacturing efficiency  
 Employs 200+ people with 2 working shifts  
 1 out of 5 employees has over 20 years of experience; average tenure is 13 years  
 Product is shipped on company owned trucks driven by Holiday Kitchens employees  
 Independent sales representatives throughout the United States  
 Knowledgeable customer service representatives available daily  
 Proprietary, web and rules based ordering system that is compatible with 2020  
 Both framed and frameless lines along with a shortened-lead time line  
 Full custom capabilities, including no charge cut-downs in 1/16” increments in height, width and depth



# FRAMED CONSTRUCTION



## 1/2" HYBRID BOX

- A. Hanging strips 3/4" x 2-9/16"
- B. Housing: Wood grain vinyl interior - 1/2" plywood sides, 1/2" particle board top and bottom, 1/4" back
- C. Toe Board: 1/4" plywood 3-1/2" high pieces loose for field installation onto toe kick support board, dimensions shown are after jobsite installation
- D. Shelves: 3/4" particle board with vinyl applied both sides and PVC banding. Shelves are adjustable on spoon clips
- E. Face Frame: 3/4" x 1-1/2" solid hardwood

## 1/2" PLYWOOD BOX

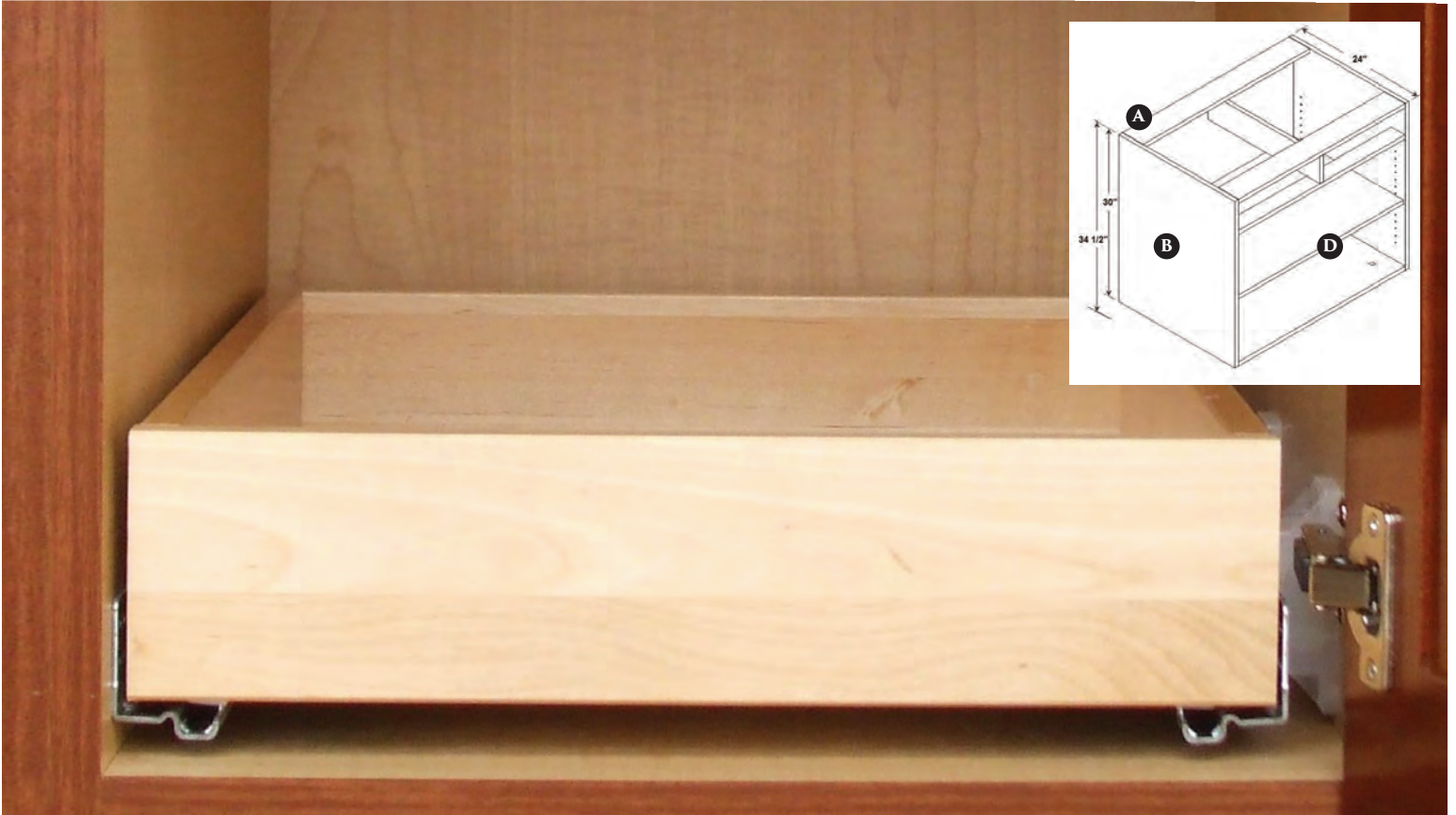
- A. Hanging strips 3/4" x 2-9/16"
- B. Housing: Wood grain vinyl interior - 1/2" plywood sides and bottom, 1/4" back
- C. Toe Board: 1/4" plywood 3-1/2" high pieces loose for field installation onto toe kick support board, dimensions shown are after jobsite installation
- D. Shelves: 3/4" plywood with vinyl applied both sides and PVC banding. Shelves are adjustable on spoon clips
- E. Face Frame: 3/4" x 1-1/2" solid hardwood

## 5/8" PLYWOOD BOX

- A. Hanging strips 3/4" x 2-9/16"
- B. Housing: Natural Maple pre-finished veneer interior - 5/8" plywood bottom and unfinished sides, 1/4" plywood back
- C. Toe Board: 1/4" plywood 3 1/2" high pieces sent loose for field installation onto toe kick support board, dimensions shown are after jobsite installation
- D. Shelves: 3/4" maple plywood with maple edge banding, adjustable on spoon clips
- E. Face Frame: 3/4" x 1-1/2" solid hardwood

ALL FRAMED CONSTRUCTION LEVELS OFFER BOTH FLUSH & BEADED INSET.

# FRAMELESS CONSTRUCTION



## 3/4" MELAMINE

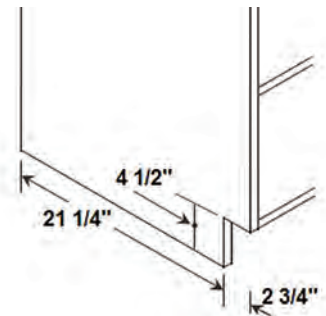
- A. Hanging strips 1/2" x 2-13/16"
- B. Housing: Available in White Melamine, Natural Maple Melamine, NAF Melamine and NAF Natural Maple Veneer
- C. Toe Board: 3/4" industrial board 4-3/8" high pieces loose for field installation.
- D. Shelves: Available in White Melamine, Natural Maple Melamine and Maple Melamine. Shelves are adjustable on spoon clips

## 3/4" PLYWOOD

- A. Hanging strips 1/2" x 2-13/16"
- B. Housing: Available in Plywood and NAF Plywood
- C. Toe Board: 3/4" Plywood 4-3/8" high pieces loose for field installation.
- D. Shelves: Available in Finished Natural Maple Veneer. Shelves are adjustable on spoon clips

## TOE KICK OPTIONS

NLN: Notched for toe, sides extended down.



Adjustable Leg Levelers: Adjust leg height from 3-3/4" to 5-3/4"



# DRAWER BOX OPTIONS



**LEVEL 1**  
Shoulder-Top Unfinished Dovetail



**LEVEL 2**  
Shoulder-Top Finished Dovetail



**LEVEL 3**  
Bullnose-Top Filled and Finished Dovetail



**LEVEL 4**  
Partial Bullnose-Top Filled and Finished Dovetail with Black Walnut Front



**LEVEL 5**  
1/2 Bullnose-Top Filled and Finished Dovetail with Black Walnut Sides



**TANDEMBOX**  
Gray Epoxy Coated Metal Sides with Industrial Board Bottom with Gray Melamine Applied Frameless

## GUIDES



**3/4 EXTENSION  
SIDE MOUNT**  
Framed



**7/8 EXTENSION  
UNDER MOUNT**  
Framed



**FULL EXTENSION  
UNDER MOUNT**  
Framed & Frameless



**QUADRO 4D  
ADJUSTABLE  
UNDER MOUNT**  
Full Extension | Framed & Frameless



**QUADRO 4D  
PUSH TO OPEN  
ADJUSTABLE UNDER MOUNT**  
Full Extension | Frameless

# STANDARD WOOD SPECIES

Holiday Kitchens offers the following wood species. More details on each wood species can be found on the Holiday Kitchens Website. Due to the distinct properties of each wood species, some finishing options are not available on certain species; check the Finish Availability table in this guide for more details.

## ALDER, CHARACTER

Alder is a relatively soft and light hardwood. It ranges from light golden brown to a reddish brown. Alder has relatively straight grain and even texture. Because alder is a fast-growing tree, it often has small pin-knots, some mineral streaks, and pitch pockets. It is similar in appearance to cherry.



Alder

## CHERRY, CHARACTER

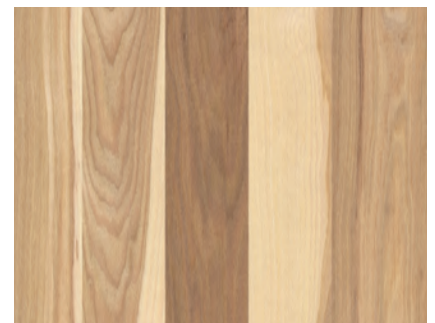
Cherry is a durable hardwood often used in fine furniture. It ranges in color from a light pinkish wheat to a rich reddish brown. The grain pattern of cherry is quite unique, with some pieces showing relatively straight grain and others showing bold, wavy arcs and bends. Cherry often has small pin-knots, some mineral streaks, and pitch pockets. Small areas of lighter colored sapwood are to be expected.



Cherry

## HICKORY, CHARACTER

Hickory is a strong, durable hardwood. It ranges widely in color from almost white to dark, reddish brown. Hickory has distinctive grain patterns and texture. Hickory often has small sound knots, mineral streaks, grain cracks, smooth flake, and a distinctive variation of other natural characteristics.



Hickory

## MAPLE, CHARACTER

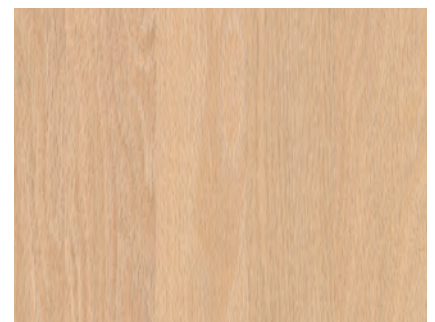
Maple is a strong, dense hardwood. Holiday Kitchens maintains a very tight range of light, almost white, color. Maple can have distinctive grain and has a tight, smooth texture. Maple often has pin-knots and a few small mineral streaks.



Maple

## OAK (RED OAK), CHARACTER

Red oak is a dense, durable hardwood. It ranges in color from a light brown to a pinkish brown. Oak has relatively distinctive arching grain and porous texture. Oak often has small pin-knots and some mineral streaks.



Oak

## \*CHARACTER

Character shares the same characteristics, but with a rustic appearance. This includes sound knots of varying size, and a wider variation of color, sapwood and other natural characteristics.

# STANDARD WOOD SPECIES

## OAK, QUARTER-SAWN (RED OAK)

Quarter-Sawn oak has similar characteristics to oak, but is cut from the tree in a different manner that yields a tight, straight grain pattern. It tends to range slightly redder in color than Holiday Kitchens' standard red oak. Quarter-Sawn Oak shows very few small knots and some mineral streaks. In addition to its tight grain, quarter-sawn oak yields "flakes", which are distinctive, shiny portions of the grain.



Quarter-Sawn Red Oak

## OAK, WHITE

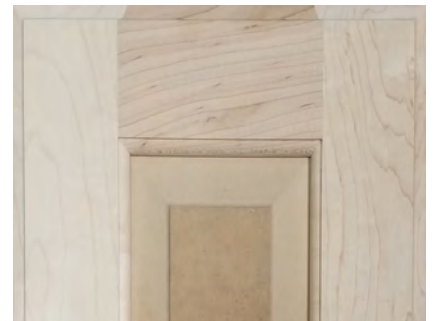
White Oak is a dense, durable hardwood, similar to Red Oak. Wood color that ranges from a greenish-gray to a light brown, occasionally with a slight pink hue. White Oak has arching grain and a porous texture. Some small pin knots and mineral streaks are common.



White Oak

## PAINT GRADE

Paint Grade consists of Maple stiles and rails and a MDF center panel on doors and is a strong, dense hardwood with tight grain and smooth texture making it ideally suited to painting. The color range varies more with Paint Grade as this is not visible through the paints.



Paint Grade

## PAINT GRADE MDF

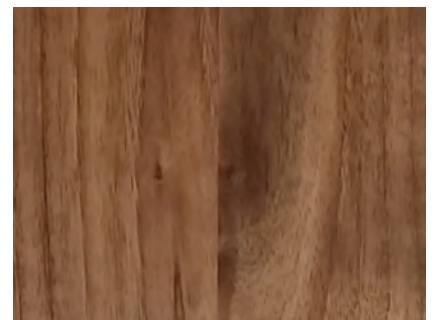
Paint Grade MDF offers an alternative to Paint Grade for paints. Paint Grade MDF consists of MDF material only with a smooth texture making it ideally suited to painting.



Paint Grade MDF

## WALNUT

Walnut is a strong and versatile wood and is a mix of heartwood and sapwood. Walnut can range in color from a warm chocolate brown to nearly white with a variation of grain patterns and a medium texture.



Walnut

# WOOD STAINS

	Alder	Cherry	Hickory	Maple	Red Oak	Quarter-Sawn Red Oak	White Oak	Walnut
Acorn								
Autumn								
Breckenridge								
Butternut								
Candy								
Canyon								
Caraway								
Chablis								
Cocoa								
Coffee Bean								
Concord								
Country Hearth								
Driftwood								
Dusk								
Empire								
Fireside								
Fog								
Granite								
Hallmark								
Knight								
Linen								
Meadow								
Merlot								
Misty								
Natural								
Nutmeg								
Pebble								
Praline								
Sandalwood								
Sunrise								
Tessur								
Truffle								
Village								
Walnut Natural								
Woodridge								



# STANDARD PAINTS



## SHEENS

All standard paints and stains available in standard, matte or flat sheen



## CUSTOM PAINTS

Benjamin Moore/Sherwin-Williams and Custom Finish Matching Program available.

## MASTER FINISH

Our unique “Master Finish” process will resist food stains, chemical damage and moisture. Mix and match materials, finishes or hinges to create the look you’ve been dreaming about. Photos in this brochure may not reflect the true color of the cabinetry. Holiday Kitchens highly recommends that you view a door sample from your dealer before selecting your kitchen. Please visit the Holiday Kitchens Website or specification guides for more details.

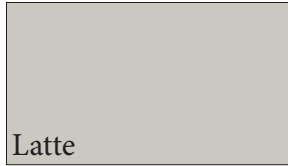
# GLAZE OPTIONS

## STANDARD GLAZES

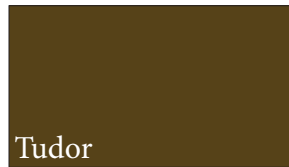
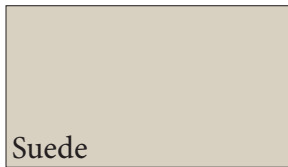
## DOUBLE GLAZE



## WASH GLAZES

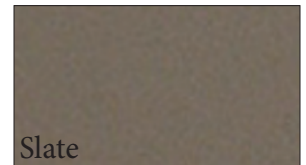
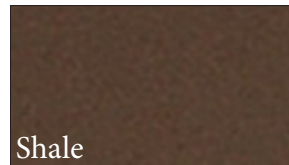
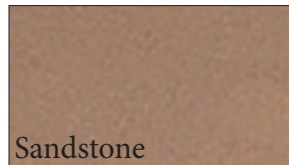
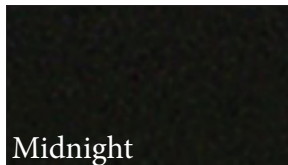
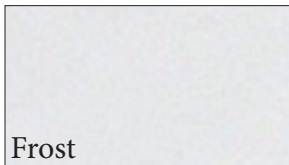


BRUSH GLAZES - AVAILABLE ON ALL STANDARD STAINS AND ON SELECT PAINTS (SEE CHART BELOW)  
AVAILABLE ON ALDER, CHERRY, MAPLE & PAINT GRADE; NOT AVAILABLE ON MITERED DOORS

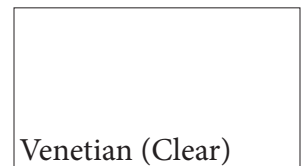
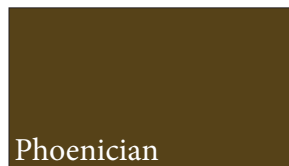
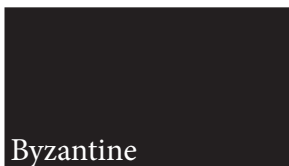


	Antique White	Barn Red	Bone	Breeze	Cameo	Cyprus	Destin	Ebony	Galveston	Indigo	Ivory	Laguna	Nantucket	Nimbus	Nordic	Sage	Snowdrift	Stone Brown	Storm	Taupe	Vineyard	Watermelon	Wave	Winter	
Harbor		◆		◆		◆		◆	◆	◆		◆				◆		◆	◆					◆	
Suede	◆	◆	◆	◆	◆	◆	◆	◆	◆	◆	◆	◆	◆	◆	◆	◆	◆	◆	◆	◆	◆	◆	◆	◆	◆
Tudor		◆		◆		◆	◆	◆	◆	◆		◆	◆	◆		◆		◆	◆	◆	◆	◆	◆		

## SILK BRUSH GLAZES - AVAILABLE ON PAINTS ONLY



## CRACKLE



# SPECIALTY FINISH

## CERUSED

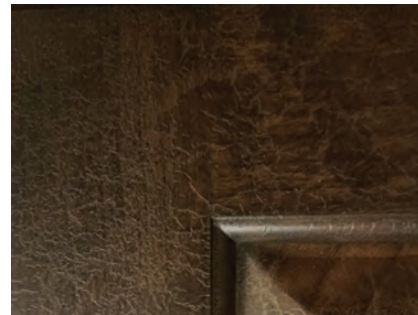
The cerused technique is a hand-brushed finishing treatment that deepens the woods natural grain allowing it to accept a contrasting pigment resulting in a beautifully, unique finish. Pigment colors used for cerusing follow our existing glaze names. Available on Oak, Character Oak, Quarter-Sawn Oak, Hickory and Character Hickory. Not available on Walnut.



Cerused

## CRACKLE

Crackle simulates cracked paint that allows the color beneath to show offering a wide range in the final appearance due to the crackle color and base color chosen. Crackle can be used with any stain or primer. The crackles will have a wide variety in size and appearance. There are five colors available in crackle which include: Venetian (clear), Ionian (white), Phoenician (brown), Roman (gray) and Byzantine (black) and is available on the following wood species: Alder, Cherry, Hickory, Maple, Paint Grade MDF, Oak, Quarter Sawn Oak, White Oak and their character species.



Crackle

## LOGORO

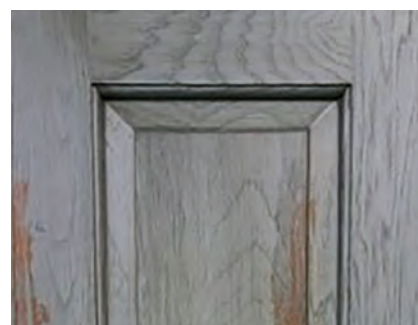
Logoro is mechanical aged process that simulates an aged, time-worn look. The base color is available in all of our standard paints and full custom paints. Special BM/SW match pricing is not available. After your base color is picked, a heavy, deep-biting stain is applied over the surface (no color options) making a beautiful finish. Logoro is available on the following wood species: Alder, Cherry, Hickory, Maple, Oak, Quarter-Sawn Oak, White Oak and their Character options. Some additional treatments are allowed at the regular up charge including: wormholes, splits, distressing, joint-cuts, knife-outs with rasping and eased edges and corners.



Logoro

## LOGORO MOLTE

Logoro Molte features the same beautiful characteristics of Logoro, but has peeled paint revealing the wood underneath adding to the aged look.



Logoro Molte

## WEATHERED

Several new door styles, including Weathered Contemporary, Weathered Mission, Weathered Seattle and Weathered Seattle Duet; and shiplap options made with wood that have been mechanically brushed to create deep, worn lines in the surface of each component. The door is assembled after mechanical brushing so that lines are in the direction of the grain for each component of the door. Available painted or stained and on the following species: Alder, Cherry, Maple, Paint Grade and Paint Grade MDF and their Character options.



Weathered

# VINTAGE ARTISTRY

## VINTAGE ARTISTRY

Vintage Artistry finish treatments are designed to create an aged, worn look similar to what can be found on antique furnishings. We recommend approving a door sample prior to ordering any of the Vintage Artistry options so that you can clearly visualize the look. Vintage Artistry is available with any of our top coat sheens, though we recommend either flat or matte to achieve the aged furniture look.

## CARRIAGE HOUSE

This specially designed heavy worn look is available on Alder, Cherry, Oak, and their Character options. A coat of paint is lightly applied over a pre-stain finish to allow a dark brown undertone of natural wood grain to gently telegraph through the paint. A heavy worn look is performed, including rub-through on flat surfaces, to allow this rich brown color to show through simulating aged wood showing through finishing that has been naturally worn away by heavy use. The component is then glazed, completing the aged look. All of this is fully top coated to protect the component. Additionally, wormholes, splits, distressing and flyspeck Vintage Artistry options can be added at no charge, but must be specified. Our standard options are Sandalwood pre-stain, one light coat of paint, heavy worn look (other Vintage Artistry options must be specified), choice of glaze, and choice of top coat. Other color options are available as custom color matches. When electing Carriage House, you must add paint and glaze premiums. Not recommended on mitered doors.



Carriage House



Distressing

## DISTRESSING

Using special tooling, random dents and dings are applied to the surface of solid wood to give the appearance of wear and age. Finish is applied after distressing to preserve the wood. Distressing can be done on any visible surface, including finished interiors.



Eased Edges and Corners

## EASED EDGES & CORNERS

Prior to finishing, the corners and some edges of the component are sanded down to give the soft, rounded look common in antique furniture. Unlike Worn Look, the finish is not worn after application. This can be done on the outside corners and edges of doors, drawer fronts, decorator panels, decorative moldings, and valances. Not recommended on mitered doors.

## FLYSPECK

Small specks of dark finish are applied randomly to the surface of the wood to give the appearances of aging. This is applied to the entire exterior of a component, as well as to any finished interiors. Our standard color is black, but custom color matches are available if a different shade is desired.



Flyspeck

## JOINT-CUTS

Joints of assembled components are accented by applying distinctive hand cuts along the joint line. Multiple angled, v-shaped cuts are made at each joint. This look is not meant to provide a machined v-groove appearance, but rather the look of hand-crafted joint. Joint cuts will be irregular in width and appearance. This look is available on any door, drawer front, decorator panel, appliance panel, or wainscot with cope and stick construction. Not available on molding applied or mitered door styles.



Joint-Cuts

# VINTAGE ARTISTRY CONTINUED

## KNIFE-OUTS

Wood is carved along solid edges in a method similar to whittling. Gouged out edges are smoothed by gentle sanding to give the appearance of old, worn damage found in antique furniture. The corners and some other edges will be worn down, as with Eased Edge and Corner treatment. This treatment can be done on the outside and the inside corners and edges of doors, drawer front, decorator panels, decorative moldings, and valances.



Knife-Outs

## KNIFE-OUTS WITH RASPING

Wood is carved away along solid edges in a method similar to whittling. Gouged out edges are smoothed by gentle sanding to give the appearance of old, worn damage found in antique furniture. These gouges are then textured using a cross-hatch pattern applied with a knurled wood rasp. The corners and some other edges will be worn down, as with Eased Edge and Corner treatment. This treatment can be done on the outside and inside corners and edges of doors, drawer fronts, decorator panels, decorative moldings, and valances.



Knife-Outs with Rasping

## SPLITS

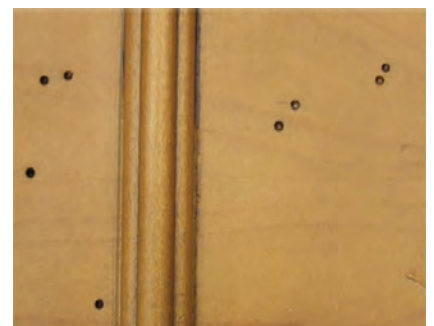
Tooled, thin lines running with the grain are carefully applied to solid wood doors to give the appearance of being cracked without sacrificing the strength of the component. Random splits, resulting from drying and movement of the wood or hard use, are common in old wood, and this look captures that feel. Splits will range in size from 1 to 3 inches. They will be found at the beginning of the edge and extend inward along the grain applied to solid doors and drawers only. Not available on mitered doors styles.



Splits

## WORMHOLES

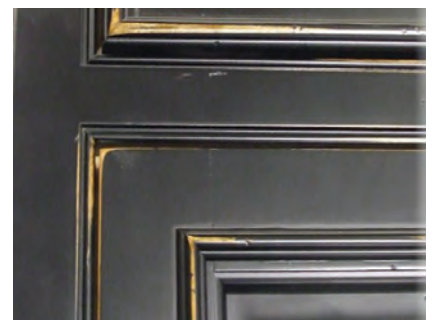
Small round holes are punched randomly into the surface of solid wood components to simulate natural wormholes in wood. These holes are applied singly and in random clusters. Wormholes can be applied to any solid wood material such as doors, drawers fronts, trim moldings, face frames, and decorator end panels. Wormholes cannot be applied to veneered sheet goods, such as plywood.



Wormholes

## WORN LOOK

Prior to finishing, the corners of the component are worn down to give the soft, rounded look common in antique furniture. After finish color is applied, these corners will be lightly hand-sanded and rubbed again to break through the finish, simulating natural wear over time. Our strong, protective topcoat is applied after this wearing to preserve the component. This can be done on the outside corners and edges of doors, drawer fronts, decorator panels, decorative moldings, valances, and cabinet frames. Not recommended on mitered door styles.



Wornlook

# WOOD DOOR STYLES

## FLAT PANEL - COPE & STICK



Birmingham Arch Cherry Door in Sunrise



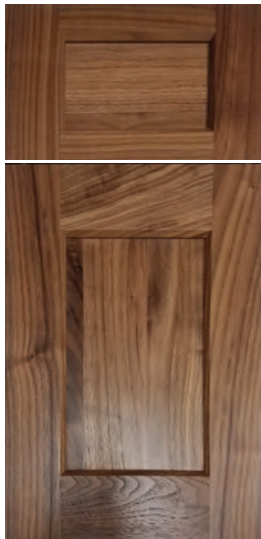
Birmingham Square Paint Grade Door In Nordic



Bradford Paint Grade Door in Vineyard



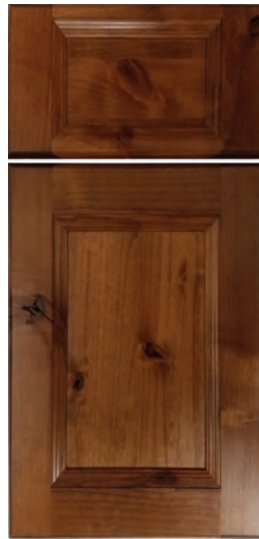
Bradford90 Paint Grade MDF Door in Nordic



Canterbury 3" Stiles & Rails Walnut Door in Natural Walnut



Charleston 3" Stiles & Rails Paint Grade Door in Stone Brown with Frost Silk Brush Glaze



Davenport 3" Stiles & Rails Character Alder Door in Canyon



Kingston Arch Cherry Door in Concord



Kingston Square Paint Grade MDF Door in Galveston with Frost Silk Brush Glaze



Madison Paint Grade Door in Stone Brown with Harbor Brush Glaze



Mission Alder Door in Nutmeg with Mocha Glaze



Petersburg Arch Oak Door in Sunrise

# WOOD DOOR STYLES

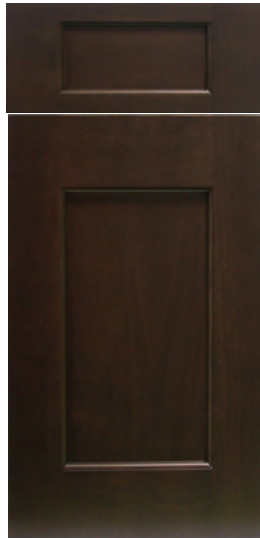
## FLAT PANEL - COPE & STICK CONTINUED



Petersburg Square Maple Door in Chablis



Petersburg Square Grooved Oak Door in Barn Red with Onyx Glaze



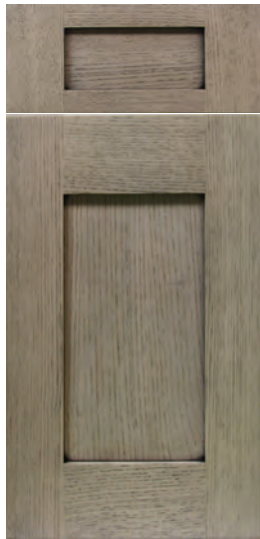
Phoenix Alder Door in Cocoa



Prairie Quarter Sawn Oak Door in Autumn with Onyx Glaze



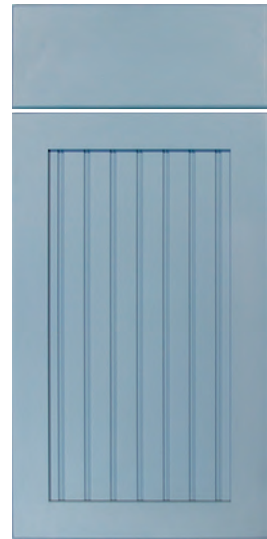
Quincy Paint Grade Door in Ebony



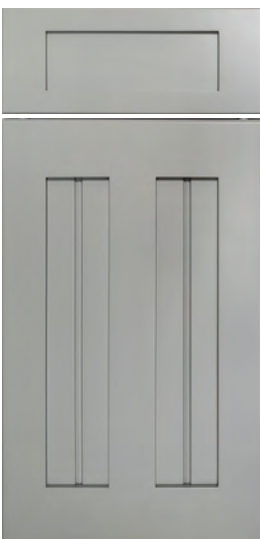
Seattle Quarter Sawn Oak Door in Chablis with Onyx Glaze



Seattle Duet Oak Door in Linen



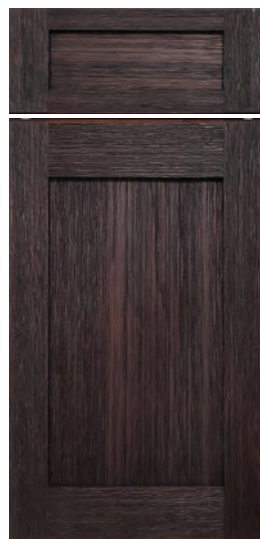
Seattle Grooved Paint Grade Door in Wave



Seattle Grooved Duet Paint Grade MDF Door in Galveston



Wakefield Paint Grade Door in Nordic



Weathered Mission Cherry Door in Fireside with Onyx Glaze



Weathered Seattle Maple Door in Fog with Onyx Glaze

# WOOD DOOR STYLES

## FLAT PANEL - COPE & STICK CONTINUED



Weathered Seattle Duet Paint Grade MDF Door in Storm with VanDyke Wash



Wiltshire Arch Hickory Door in Meadow



Wiltshire Square Paint Grade Door in Storm



Winslow Paint Grade Door in Stone Brown



## FLAT PANEL - MITERED



Winslow Groove Paint Grade Door in Wave with Harbor Brush Glaze



Beck Paint Grade Door in Galveston with Onyx Glaze



Edgewater Cherry Door in Fireside



Exquisite Quarter Sawn Oak Door in Acorn



Milan Cherry Door in Autumn with Onyx Glaze



Palermo Paint Grade Door in Stone Brown



Rio Paint Grade Door in Snowdrift with Mink Wash



Seaside Cherry Door in Granite



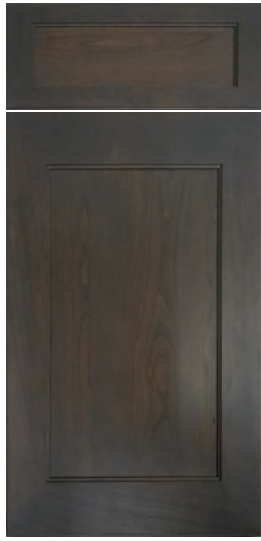


# WOOD DOOR STYLES

## FLAT PANEL - MITERED CONTINUED



Uptowne Cherry Door in Hallmark



Waterford Cherry Door in Pebble



Austen Character Alder Door in Autumn w/ Onyx Glaze: Eased Edges & Corners, Splits, Wormholes, Distressing, Knife-Outs w/ Rasping & Joint Cuts



Embassy Cherry Door in Breckenridge with Mocha Glaze



Essex Cherry Door in Hallmark with Onyx Glaze



Laramie Character Oak Door in Fog with Onyx Glaze with Knife-Outs, Rasping and Joint-Cuts



Lincoln Maple Door in Linen with Mocha Glaze

## RAISED PANEL - COPE & STICK



Carlisle Cherry Door in Knight



Harrisburg Arch Oak Door in Sunrise



Harrisburg Arch II Paint Grade Door in Breeze with Graphite Wash



Harrisburg Square Alder Door in Knight with Byzantine Crackle

# WOOD DOOR STYLES

## RAISED PANEL - COPE & STICK CONTINUED



Lancaster Arch Cherry Door in Country Hearth



Lancaster Double Arch Maple Door in Sandalwood



Lancaster Square Cherry Door in Woodridge with Mocha Glaze



Lancaster Square Duet Maple Door in Praline with Alpine Glaze



Lexington Arch Maple Door in Butternut



Lexington Double Arch Maple Door in Antique White



Lexington Square Character Oak Door in Autumn



Lexington Square Duet Paint Grade MDF Door in Laguna



Oxford Cherry Door in Country Hearth



Pioneer Paint Grade Door in Storm with Harbor Brush Glaze



Regency Maple Door in Snowdrift with Toffee Glaze



Summit Arch Cherry Door in Canyon

# WOOD DOOR STYLES

## RAISED PANEL - COPE & STICK CONTINUED



Summit Square Paint Grade Door in Storm



Tuscany Oak Door in Village



Winchester Arch Maple Door in Breckenridge



Winchester Double Arch Cherry Door in Butternut



Winchester Square Maple Door in Bone



Winchester Square Duet Maple door in Sage with Mink Wash

## RAISED PANEL - MITERED



Cedarcreek Hickory Door in Meadow



Presidential Cherry Door in Butternut with Vandyke Wash



Riverside Maple Door in Snowdrift with Mink Wash



Springdale Cherry Door in Truffle

# WOOD DOOR STYLES

## RAISED PANEL - MOLDING APPLIED MITERED



Georgian Maple Door in Cameo with Mocha Glaze



Lakeshore Maple Door in Linen with Alpine Glaze



Marquis Maple Door in Sandalwood with Mocha Glaze



Newcastle Cherry Door in Tressur with Mocha Glaze

## SLAB



Saxony Cherry Door in Hallmark with Onyx Glaze



Contemporary Maple Door in Tressur



Pillow Cherry Door in Autumn Only available Frameless



Weathered Contemporary Paint Grade MDF Door in Nordic



Mission Paint Grade Door in Snowdrift  
 Dealer: Babl Kitchen & Bath - NE | Photographer: Kay Babl

# WOOD DOOR STYLES

## MULLION/ROUTED FOR GLASS



Bastille Cherry Door in Coffee Bean \*



Country Mullion Square Oak Door in Butternut with Mocha Glaze \*



Country Mullion Harrisburg Arch Cherry Door in Woodridge \*



Diamond Mullion Cherry Door in Hallmark \*



Lancaster Square Mullion Paint Grade Door in Ivory \*



Mullion - Single Eclipse Paint Grade MDF Door in Nimbus \*



Double Eclipse Cherry Door in Fireside with Graphite Wash \*



Mullion - Single X MC1 Paint Grade MDF Door in Nordic \*



Mullion - Single X MC2 Paint Grade MDF Door in Cameo \*



Parisian Cherry Door in Merlot with Onyx Glaze \*



Seattle Mullion Cherry Door in Praline \*



Tuscany Routed for Glass Paint Grade Door in Ebony \*

\* NON-STANDARD DOOR PRICING  
 ■ PRICE CATEGORY OF DOOR ONLY

# FOIL DOORS & COLORS

STANDARD GLOSS RTF



Alero Square Foil Door in Amati Walnut



Alero Arch Foil Door in Glacier White



Amesbury II Foil Door in Antique Stain



Classic Foil Door in Antique Stain



Elegante with Pull #2 Foil Door in Cherry Blossom



Italia with Pull #3 Foil Door in Chocolate Pear



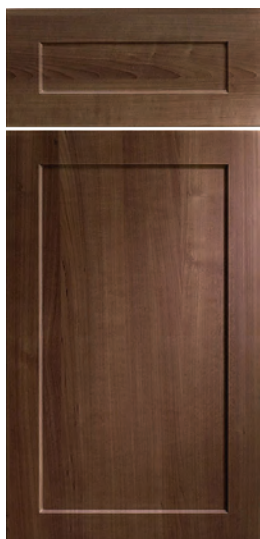
Lexus Arch Foil Door in Glacier White



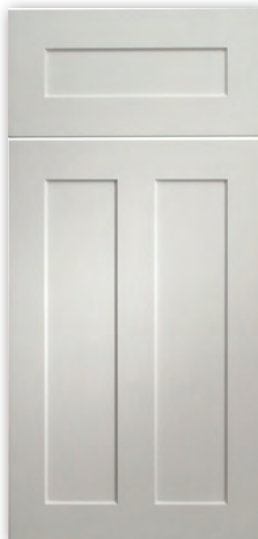
Lexus Square Foil Door in Glacier White



Novara with Pull #1 Foil Door in Glacier White



Shaker Foil Door in Copa Cabana



Shaker Duet Foil Door in Glacier



Shaker Groove Foil Door in Cream

ALL DOORS PICTURED AVAILABLE IN FRAMELESS LINE ONLY  
 ■ PRICE CATEGORY OF DOOR ONLY

# FOIL DOORS & COLORS

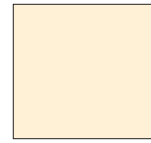
## STANDARD GLOSS RTF CONTINUED



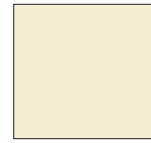
Amati Walnut



Antique Satin



Antique White



Bisque



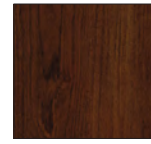
Black Matte



Candlelight



Cherry Blossom



Choco Cherry



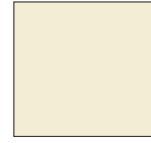
Chocolate Pear



Coffee Bean



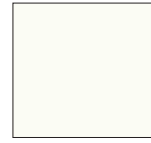
Copa Cabana



Cream



Dolce Vita



Glacier White



Rustic Cherry



Summer Flame

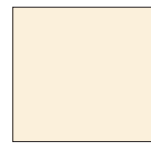


White Satin

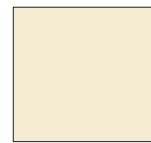
## GLAZED RTF



Amati Walnut



Antique Satin



Bisque



Candlelight



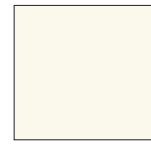
Cherry Blossom



Rustic Cherry



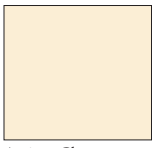
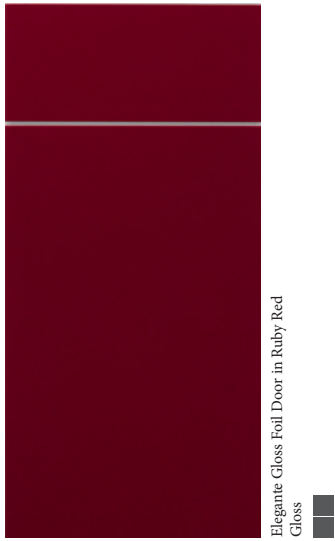
Summer Flame



White Satin

# FOIL DOORS & COLORS

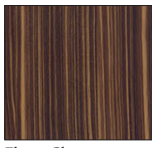
## HIGH GLOSS RTF



Antique Gloss



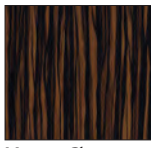
Black Gloss



Ebony Gloss



Linear Graphite Gloss



Macassar Gloss



Maria Rose Gloss



Red Gloss



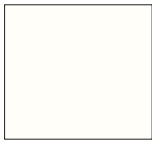
Ruby Red Gloss



Steel Gloss

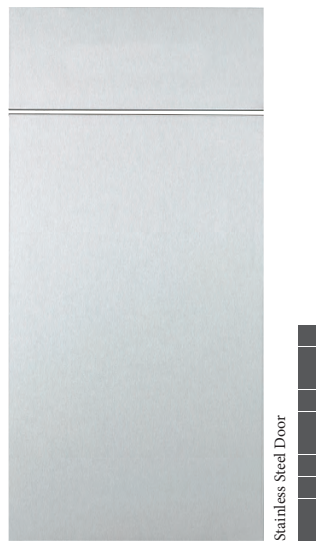


Wenge Gloss

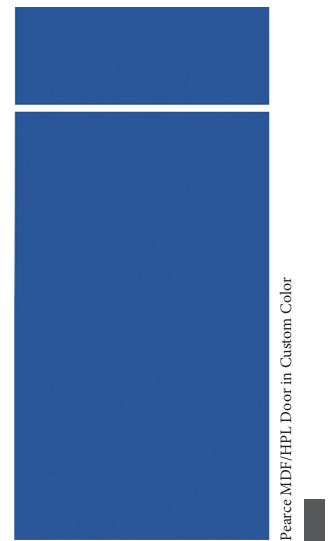


White Gloss

## METAL



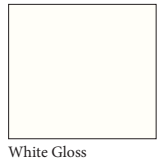
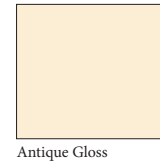
## LAMINATE



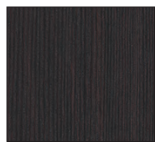


# FOIL DOORS & COLORS

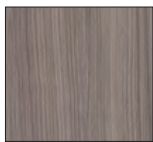
## HIGH GLOSS RTF



## EXPRESSIONS TEXTURED WOODGRAIN



Dark Oak Melinga



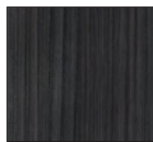
Fisherman's Wharf



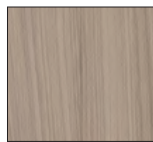
Grand Canyon



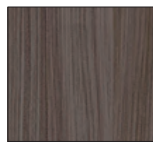
Kings Canyon



Kona



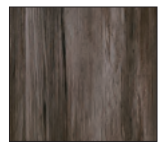
Malibu



Outer Banks



Oyster Bay



Royal Canyon



Rustic Light Oak



Silver Stream



Vintage Sepia Oak



Weathered Grey Oak



White Oak Melinga

Expressions Textured Woodgrain doors are offered on the following listed door styles that are pictured above and on the previous pages.

Alero Arch/Square  
Italia  
Ultima Arch/Square

Amesbury II  
Lexus Arch/Square  
Geneva

Classic  
Novara  
Pearce

Elegante  
Shaker/Duet/Groove

ALL DOORS PICTURED AVAILABLE IN FRAMELESS LINE ONLY  
■ PRICE CATEGORY OF DOOR ONLY

# FOIL DOORS & COLORS

## FIVE PIECE RTF



Florence Foil door in Candlelight with Glaze



Fortezza Foil Door in Bisque with Glaze



Palazzo Foil Door in Bisque with Glaze



Portabella Foil Door in Summer Flame with Glaze



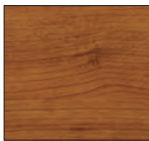
Turin Foil Door in Rustic Cherry



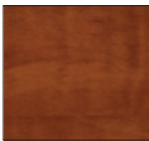
Bisque



Candlelight



Rustic Cherry



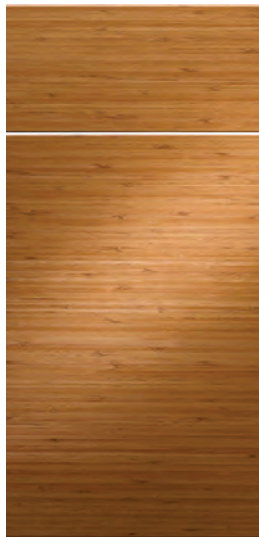
Summer Flame

Turin only available in Bisque & Rustic Cherry

## EXOTIC SOLID REAL WOODS



Moso Blonde Bamboo Door in Natural



Moso Caramelized Bamboo Door in Natural with Horizontal Grain



Palm FI Coconut Palm Door in Natural



ALL DOORS PICTURED AVAILABLE IN FRAMELESS LINE ONLY  
 ■ PRICE CATEGORY OF DOOR ONLY

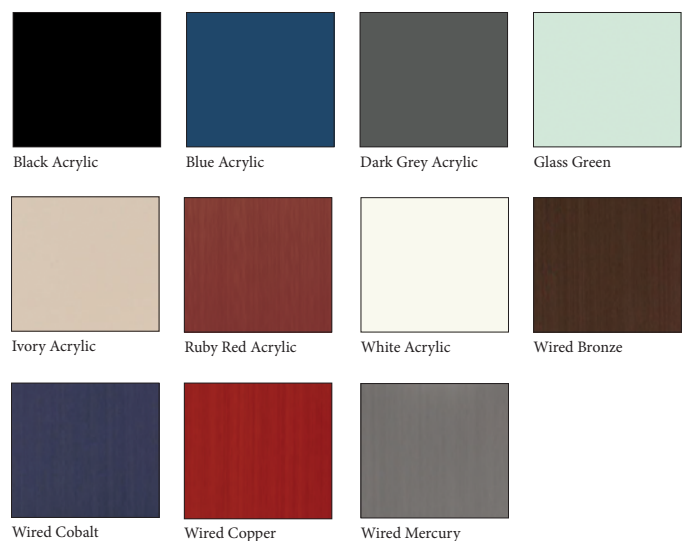
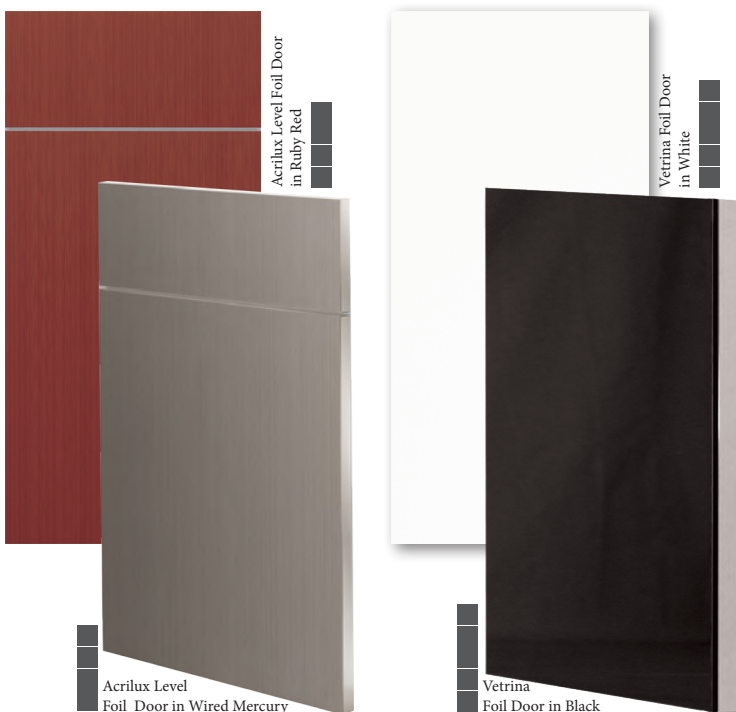
# FOIL DOORS & COLORS

## VENEERS



In addition to our standard wood veneers (Alder, Cherry, Hickory, Maple, Oak, Quarter Sawn Oak, Walnut and White Oak) we also offer many composite (reconstituted) veneers which capture the look of exotic species while saving our rainforests. Our standard wood veneers are available in most finishes. To showcase the beauty of exotic species, reconstituted veneers are available with a natural finish only. ~Frisco is not available in Hickory, Quarter Sawn Oak, Walnut or White Oak.

## ACRILUX



Acrilux is an acrylic applied to MDF and coated with a thermoplastic eco-friendly material. Main features are a glossy, mirror like surface, exceptional brightness and UV resistance.



Made with Pride in the USA  
[www.holidaykitchens.com](http://www.holidaykitchens.com)

Perimeter: Seattle Paint Grade Door in Nordic; Island: Seattle Paint Grade Door in Granite  
Dealer: Kitchen Kraft - OH | Photographer: Jeff McCutcheon