

caesarstone®

Collection
2020



Caesarstone. Crafted For You.

"Combining the beauty & strength of quartz - One of nature's strongest minerals".

Caesarstone® lives in the heart of your home, combining the beauty and strength of quartz surfaces in your kitchen, bathroom and more.

Caesarstone® gives you total peace of mind that you've chosen not just the durability and quality of a Caesarstone® surface, but an inspired centrepiece for a lifetime of experiences.

Bring out the designer in you.

Empira Black™

Empira Black has a dark base composed of rich, deep black beautified by light natural veins. Inspired by the authentic characteristics of natural forms, Empira Black with its polished finish endows the space with the sophistication of real marble.

Black Tempal™

A captivating interpretation of industrial travertine. Soft mineral deposits create a marbled veil across the slab, in contrast to its black charcoal base. With the new Natural finish, this complex composition is layered, capturing warm granular highlights just as in real stone.

Piatto Black™

Piatto Black is the ultimate dark. Its fine granular appearance is complemented by the new textured Natural finish; enhancing a deeper, more intense black.

The Caesarstone® Difference

Your Renovation Partner.

We make a complex process easy with support, inspiration and a human touch. We help you with all the details so you can bring your vision to life. Start your journey at www.caesarstone.com.au

Innovative Superior Designs.

Caesarstone® leads the way with the latest on-trend designs. Whether it's a timeless classic or a breath-taking new design, Caesarstone® lives at the heart of your dream home.

Total peace of mind.

Caesarstone® produce the highest quality surfaces that are durable & easy to care & maintain with our range of cleaning products. We support you with a 10 year limited warranty and impeccable customer service support.

We conform to all the relevant International Standards.



Colour Categories

Standard	Deluxe	Supernatural	Supernatural Ultra
Urban™ 2040	Pure White™ 1141	Cloudburst Concrete™ 4011	Statuario Maximus™ 5031
Snow™ 2141	Piatto Black™ 3101 NEW	Topus Concrete™ 4023	Empira Black™ 5101 NEW
Linen™ 2230	Fresh Concrete™ 4001	Rugged Concrete™ 4033	Calacatta Nuvo™ 5131
Jet Black™ 3100	Sleek Concrete™ 4003	Primordia™ 4043	Empira White™ 5151
Osprey™ 3141	Raw Concrete™ 4004	Airy Concrete™ 4044	
White Shimmer™ 3142	Clamshell™ 4130	Excava™ 4046	
Oyster™ 4030	Shitake™ 4230	London Grey™ 5000	
Raven™ 4120	Organic White™ 4600	Piatra Grey™ 5003	
Buttermilk™ 4220	Frozen Terra™ 4601	Vanilla Noir™ 5100	
Wild Rice™ 4360	Cosmopolitan White™ 5130	Alpine Mist™ 5110	
Intense White™ 6011	Symphony Grey™ 5133	Frosty Carrina™ 5141	
Nordic Loft™ 6041	Georgian Bluffs™ 6134	White Attica™ 5143	
Ocean Foam™ 6141		Noble Grey™ 5211	
Atlantic Salt™ 6270		Black Tempal™ 5810 NEW	
Nougat™ 6600		Bianco Drift™ 6131	
Ice Snow™ 9141		Turbine Grey™ 6313	

NEW Colours arriving May 2020

Colour Selection

Caesarstone® is made from natural quartz and therefore some variation in colour and aggregate may occur. The colours in this brochure are to the highest standards in printing, however, should only be used as an indication of actual product design. We always recommend making a final colour selection by viewing displays of larger panels in your nearest Caesarstone® showroom or kitchen retail showroom to appreciate the movement of the design over a large surface.

Showroom Locations

Caesarstone® Australia Head Office, Showroom & Warehouse
Warehouse 3a East
Moorebank Logistics Park
400 Moorebank Ave
Moorebank NSW 2170

Caesarstone® NSW Sydney Showroom
84 O'Riordan St,
Alexandria NSW 2015

Caesarstone® VIC & TAS Heatherton Showroom & Warehouse
57 Corporate Drive,
Heatherton VIC 3202

Caesarstone® SA Hindmarsh Showroom & Warehouse
5 Hindmarsh Place,
Hindmarsh SA 5007

Caesarstone® QLD Yatala Showroom & Warehouse
86 - 90 Union Circuit,
Yatala QLD 4207

Caesarstone® QLD South Brisbane Showroom - The Build & Design Centre
66 Merivale St,
South Brisbane QLD 4101

Caesarstone® WA Wangara Showroom & Warehouse
14-18 Quantum Link,
Wangara WA 6065

Caesarstone® WA Subiaco Showroom - Home Base
55 Salvado Road,
Subiaco WA 6008



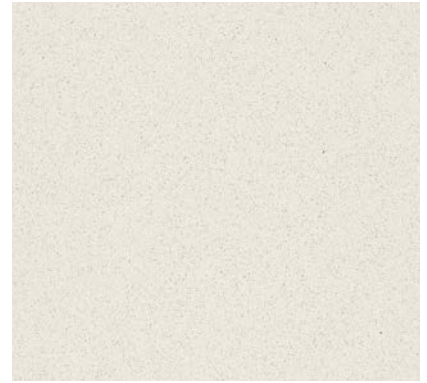
Pure White™ 1141

P D



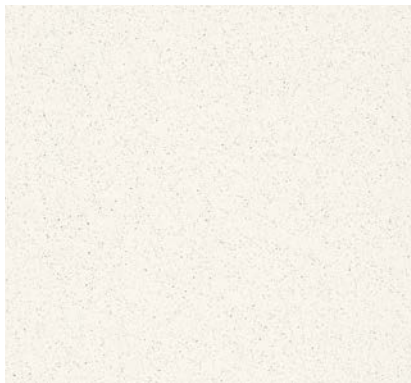
Organic White™ 4600

P D



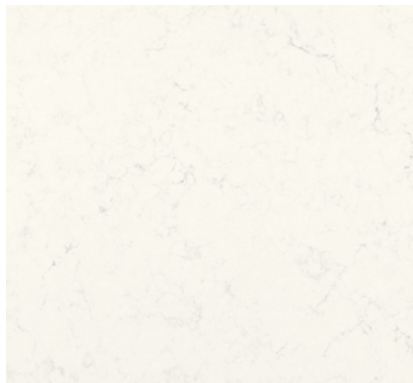
White Shimmer™ 3142

P S



Intense White™ 6011

P S



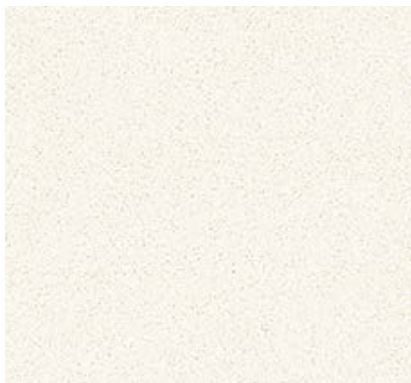
Frosty Carrina™ 5141

P SN



Frozen Terra™ 4601

C D



Snow™ 2141

P S



Osprey™ 3141

P S



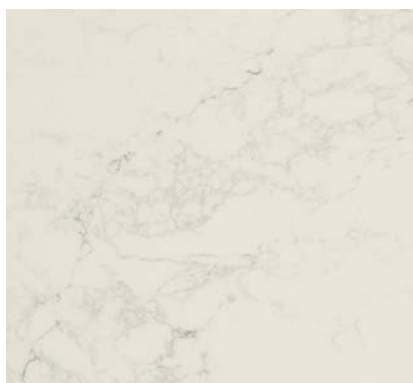
Ice Snow™ 9141

P S



Empira White™ 5151

P SNU



Calacatta Nuvo™ 5131

P SNU



Statuario Maximus™ 5031

P SNU

Surface Finish:

C Concrete Finish

R Rough Finish

N Natural Finish

P Polished



Ocean Foam™ 6141

P S



Clamshell™ 4130

P D



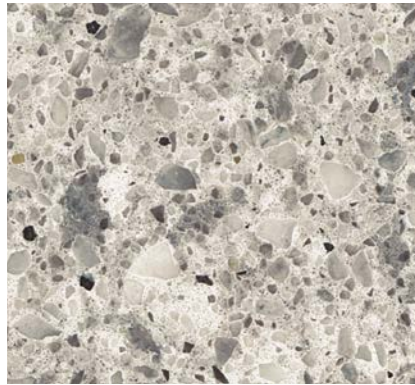
Bianco Drift™ 6131

P SN



Nougat™ 6600

P S



Atlantic Salt™ 6270

P S



Cosmopolitan White™ 5130

P D



Nordic Loft™ 6041

P S



Cloudburst Concrete™ 4011

R SN



Fresh Concrete™ 4001

C D



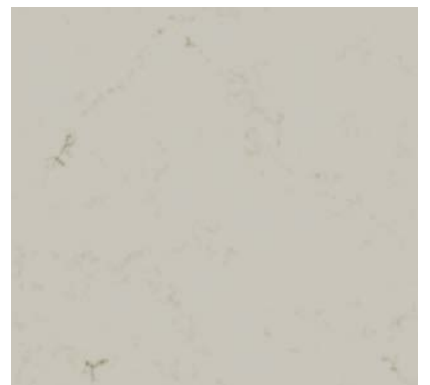
White Attica™ 5143

P SN



Alpine Mist™ 5110

P SN



London Grey™ 5000

P SN

Colour Range:

S Standard Range

D Deluxe Range

SN Supernatural Range

SNU Supernatural Ultra Range



Symphony Grey™ 5133

P D



Primordia™ 4043

R SN



Topus Concrete™ 4023

R SN



Buttermilk™ 4220

P S



Linen™ 2230

P S



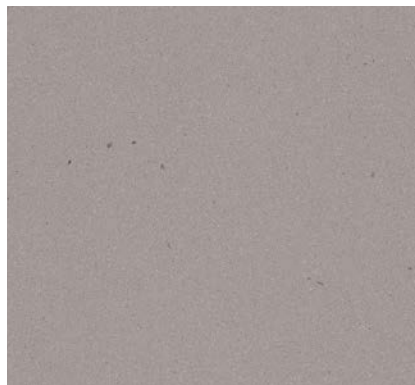
Shitake™ 4230

P D



Raw Concrete™ 4004

C D



Sleek Concrete™ 4003

C D



Airy Concrete™ 4044

R SN



Noble Grey™ 5211

P SN



Georgian Bluffs™ 6134

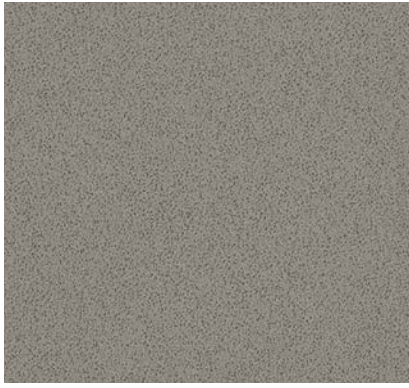
P D



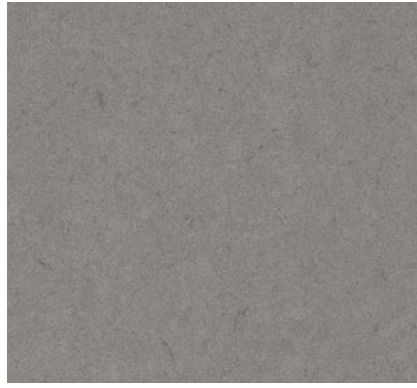
Excava™ 4046

R SN

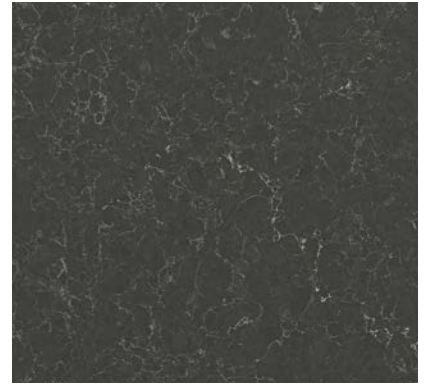
Darker colours, concrete and natural surfaces can highlight marks and fingerprints more readily and may require more regular cleaning.



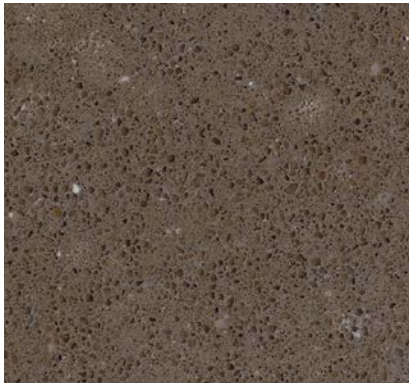
Urban™ 2040 P S



Oyster™ 4030 P S



Piatra Grey™ 5003 P SN



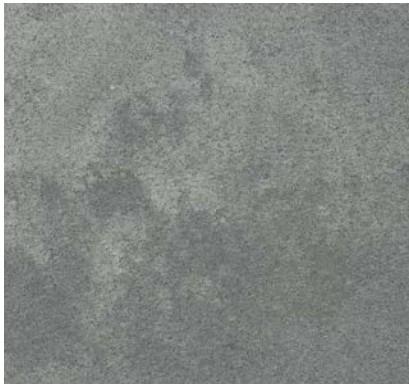
Wild Rice™ 4360 P S



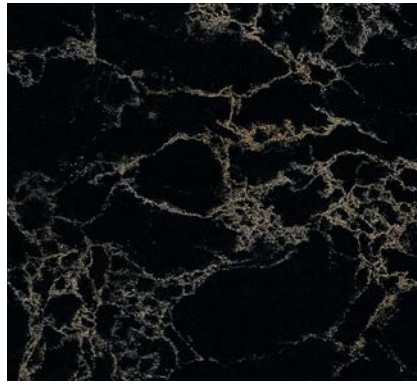
Turbine Grey™ 6313 P SN



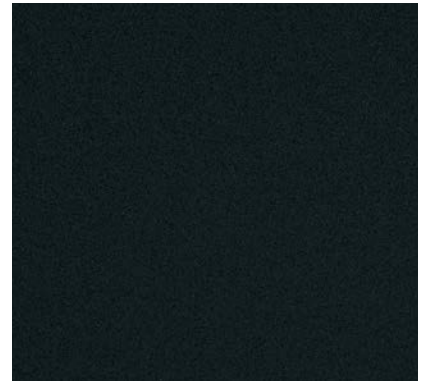
Raven™ 4120 P S



Rugged Concrete™ 4033 R SN



Vanilla Noir™ 5100 P SN



Piatto Black™ 3101 **NEW!** N D



Black Tempal™ 5810 **NEW!** N SN



Empira Black™ 5101 **NEW!** P SNU



Jet Black™ 3100 P S

Slab Thickness: 20mm = 198-206kg (45-47kg/m²)

Slab Size: 3,050mm x 1,440mm (Nominal)

Care & Maintenance

Everyday Cleaning

Caesarstone® surfaces require very little maintenance to keep them looking like new. For everyday, routine cleaning of Caesarstone® we recommend wiping the surface with warm soapy water (a mild detergent) and a clean damp cloth, or use our convenient Caesarstone® Spray Cleaner. Do not use the cloth you use to wash the dishes, as it may transfer oils and other contaminants to the Caesarstone® surface.

As Caesarstone® is virtually non-porous, it will never require polishing or sealing. Never attempt to polish the surface and avoid prolonged rubbing in one spot when cleaning.

Caesarstone® Cleaning Products

Caesarstone® has developed a range of specially formulated cleaning products designed to keep your quartz surfaces looking their best. Caesarstone® Cream Cleanser and Spray Cleaner are available to purchase through our online store.

Food Preparation

We always recommend cutting on an appropriate cutting board and never directly on the Caesarstone® surface to avoid blunting kitchen knives or damaging the surface of your benchtop.



Cleaning Reference Guide

Substance	Caesarstone® Cream Cleanser	Methylated Spirits	Caesarstone® Spray Cleaner
Red Wine	✓		✓
Beetroot	✓		✓
Coffee / Tea	✓		✓
Cordial	✓		✓
Spices	✓		
Food Oils			✓
Glue / Silicone / Paint		✓	
Tougher, Stubborn Stains	✓		



To remove adhered materials like food, gum and nail polish, first scrape away the excess with a sharp blade. If there are any grey metal marks on the surface, use a small amount of Caesarstone® Cream Cleanser on the light blue sponge side of a 3M™ Scotch-Brite™ Non-Scratch Foam Scrub, gently rub over the mark and thoroughly rinse with warm water to remove it. Household bleach can generally be used as an effective cleaner to remove stubborn marks, but care should be taken as some products are considerably stronger than others.

If you have stubborn marks which still can't be removed, view our online Frequently Asked Questions or contact us on 1300 119 119 for further advice.

Tough? Yes. Indestructible? No.

As with any surface, Caesarstone® can be permanently damaged by exposure to strong chemicals and solvents that undermine its physical properties. Do not use products that contain trichlorethane or methylene chloride, such as paint removers or stripper. Avoid all contact with highly aggressive cleaning agents like oven cleaners that have high alkaline/pH levels. Should the surface be accidentally exposed to any of these damaging products, rinse immediately with water to neutralize the effect.

Heat Resistance

Caesarstone® is heat resistant, however like all stone materials; Caesarstone® can be damaged by sudden and rapid surface temperature changes. A good rule of thumb is that if your hand cannot tolerate the level of heat of an item to be placed on the surface for more than a few seconds, then the heat source is too high. We always recommend placing hot pots, hot oven trays, frypans, and electrical cooking appliances onto a wooden chopping board or cork mat.

Do our Concrete and Natural finish designs require extra cleaning?

Caesarstone® Concrete and Natural finish designs carry the same stain and scratch resistance as our polished surfaces, never require sealing and are simple to clean. However, these two finishes do not disguise marks and fingerprints as well as the polished designs, meaning more regular cleaning may be required using the Caesarstone® Spray Cleaner for daily use and Caesarstone® Cream Cleanser and 3M™ Scotch-Brite™ Non-Scratch Foam Scrub to provide a thorough all over surface clean as per the instructions.

To watch our cleaning instruction video and learn more, visit <https://www.caesarstone.com.au/cleaning-maintenance>

