

# Measuring Guide

This guide will give you step-by-step instructions on how to measure and create a floor plan (aerial view) of your space. This information will provide our designers and DIY clients with everything they need.



**You will need:**    **Tape Measure**                      **Pen/Pencil**                      **The Measuring Guide**

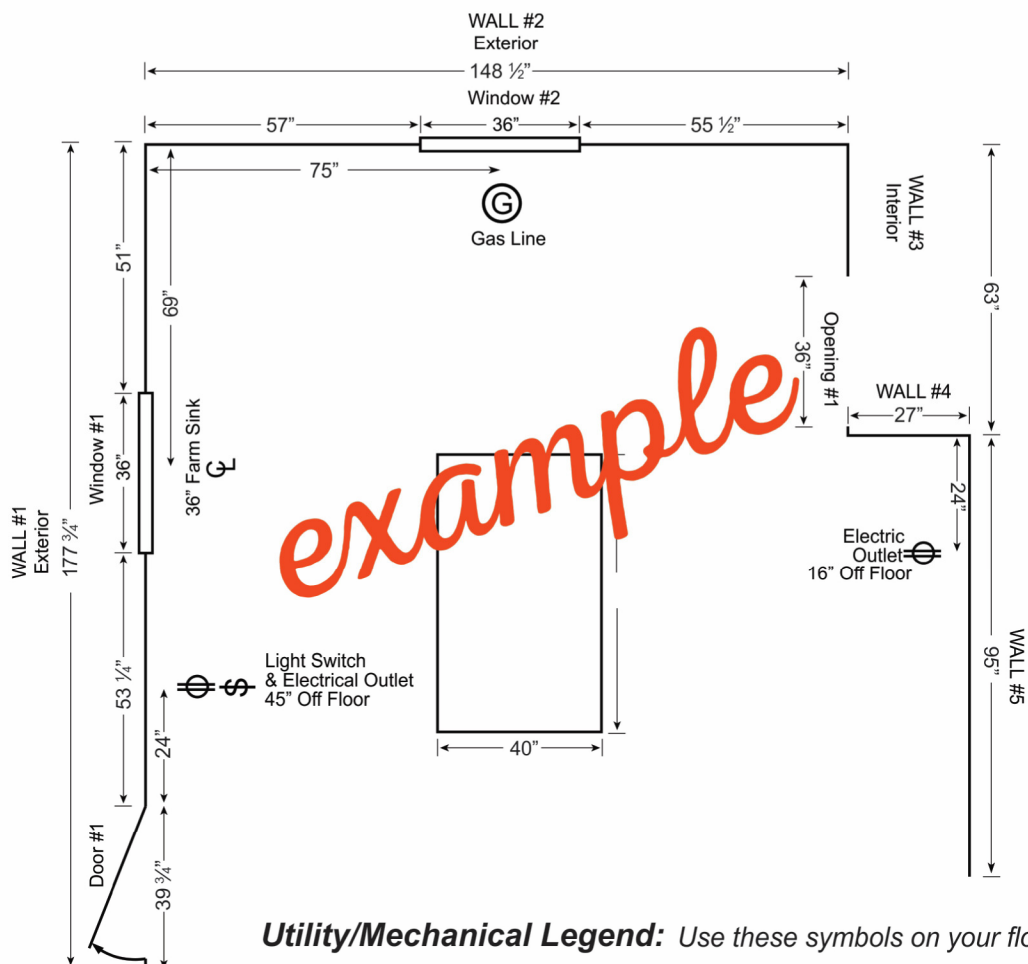
**Name:** \_\_\_\_\_ **Phone:** \_\_\_\_\_

**Email:** \_\_\_\_\_ **Manufacturer:** \_\_\_\_\_



**Address:** \_\_\_\_\_ **Door style/Finish:** \_\_\_\_\_

**City:** \_\_\_\_\_ **State:** \_\_\_\_\_ **Zip Code:** \_\_\_\_\_

**Please use the example below for your reference while creating the floor plan of your space.**



**Utility/Mechanical Legend:** Use these symbols on your floor plan.

-  Center Line
-  Light Switch
-  220V (Electric Stove)
-  Outlet
-  Gas

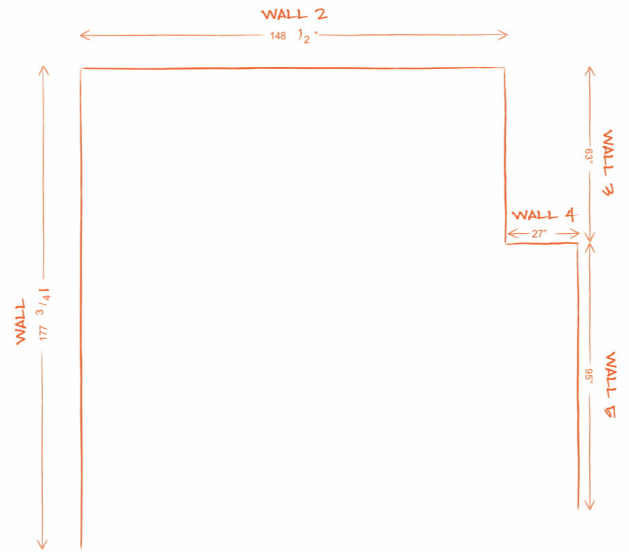


**TIP**

Be sure to measure the full length of each wall.

## Step 1: Measure Your Space

- Starting in the left corner, measure each wall in the space that will contain cabinets and record those measurements (in inches) on the "Floor Plan Design Grid" located on the last page of this Measuring Guide.
- Number each wall on the floor plan.



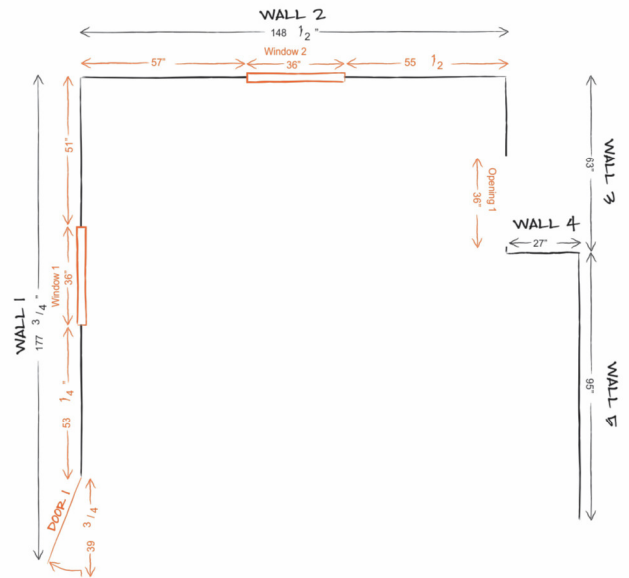
## Step 2: Doors, Windows, Room Openings

- Locate and measure doors, windows and room openings.
- Record and Number each door, window and room opening on the grid.
- Record the corresponding dimensions in the measurement charts below.



**TIP**

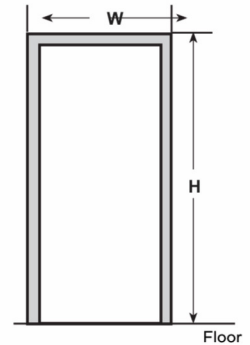
When measuring doors, windows and room openings include the trim/casing in the dimensions.



## Door/Opening Measurements

Label on Floorplan using the corresponding numbers below

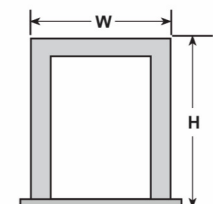
Opening or Door	Width	Height	Notes:
1			
2			
3			
4			



## Windows Measurements

Label on Floorplan using the corresponding numbers below

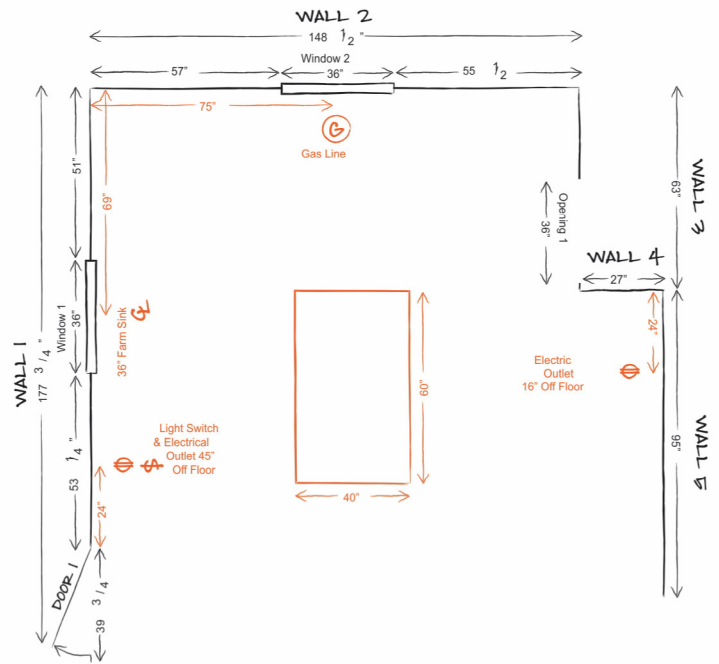
Window	Width	Height	Notes:
1			
2			
3			
4			





## Step 3: Obstacles

- Locate and measure obstacles such as electrical outlets, vents, pipes, radiators, ect.
- Record any islands you already have or wish to add.
- Record and Number each obstacle on the grid.



## Step 4: Appliances

Common appliances typically come in standard sizes but it is important that we have the measurements. Luxury appliances such as cooktops, range hoods, warming drawers, and wine chillers have dimensions that can vary drastically.

### TIP

Send us manufacturer specification sheets and installation guides if possible.

### Range

Brand/Model	Width	Depth	Height

### Microwave

Brand/Model	Width	Depth	Height

### Refrigerator

Brand/Model	Width	Depth	Height

### Dishwasher

Brand/Model	Width	Depth	Height

### Cook-Top

Brand/Model	Width	Depth	Height

### Oven

Brand/Model	Width	Depth	Height

### Hood

Brand/Model	Width	Depth	Height

### Other

Brand/Model	Width	Depth	Height

## Step 5: Ceiling Height

Accurate ceiling height measurements are very important when determining which wall cabinets and crown moulding you want in your new kitchen. It is very important to take several measurements as the height can vary in different spots in the room. Many older homes have soffits above their wall cabinets that need to be taken into consideration when creating your design.



**TIP**

Measure height in 3 areas and record the shortest dimension.

### A = Ceiling Height

Ceiling Height: \_\_\_\_\_

**Soffits** (the area between the top of the wall cabinet and the ceiling).

Does the room have soffits?

If yes, please mark the diagram to the right.

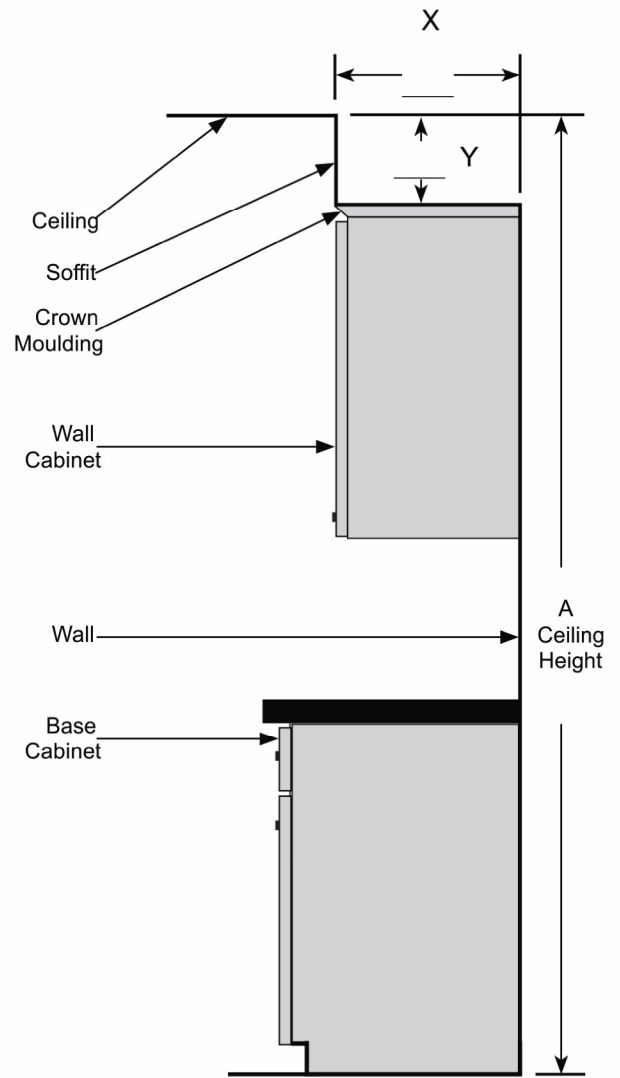
Yes  No

Do you plan to keep the existing soffits?

Yes  No

### Please check any additional items you are interested in adding:

- |   |   |  |   |
|---|---|--|---|
| <input type="checkbox"/> Base Molding                 | <input type="checkbox"/> Garbage Pull Out Cabinet | <input type="checkbox"/> Microwave Upper Cabinet | <input type="checkbox"/> Soft Close Doors     |
| <input type="checkbox"/> Crown Molding                | <input type="checkbox"/> Glass Doors              | <input type="checkbox"/> Open Shelves            | <input type="checkbox"/> Wide Storage Drawers |
| <input type="checkbox"/> Crown Molding on the Ceiling | <input type="checkbox"/> Lazy Susan               | <input type="checkbox"/> Plate Rack              | <input type="checkbox"/> Wine Storage         |
| <input type="checkbox"/> Cutlery Divider              | <input type="checkbox"/> Light Rail Molding       | <input type="checkbox"/> Roll Out Trays          | <input type="checkbox"/> Wood Hood            |
| <input type="checkbox"/> Decorative Door Panels       | <input type="checkbox"/> Microwave Base Cabinet   | <input type="checkbox"/> Spice Pull Out Cabinet  |   |



## Step 6: Photos & Submit

Now that you have completed the measuring guide, it is time to take some photos of your current space. Make sure to include pictures of each wall that will contain cabinets.



**TIP**

Include photos of any special obstacles that you may have found difficult to include in your drawing.



### Three Ways to Submit:



**Online:**

1. Go to [www.innovativekitchensny.com](http://www.innovativekitchensny.com)
2. On the homepage click "free virtual quote"
3. Fill out form and attach the measuring guide along with pictures.



**Email:**

Attach the measuring guide and pictures and email to [quotes@innovativekny.com](mailto:quotes@innovativekny.com)



**Fax:**

**(Not Recommended)**  
Send measuring guide and pictures to 631-772-7713

Thank you for completing your measuring guide. A member of our design team will be in touch with you within 24 hours and will have your drawings and quote done within 48 hours.





# Floor Plan Design Grid

Use the grid below to draw the floor plan (aerial view) of your space. Follow each step of the guide to complete drawing.

- Step 1: Measure your space
- Step 2: Doors, Windows & Room Openings
- Step 3: Obstacles
- Step 4: Appliances
- Step 5: Ceiling Height
- Step 6: Photos and Submit

Note: Each small square is 3" x 3" and each large square is 12" x 12".

