

GOLDENLAND

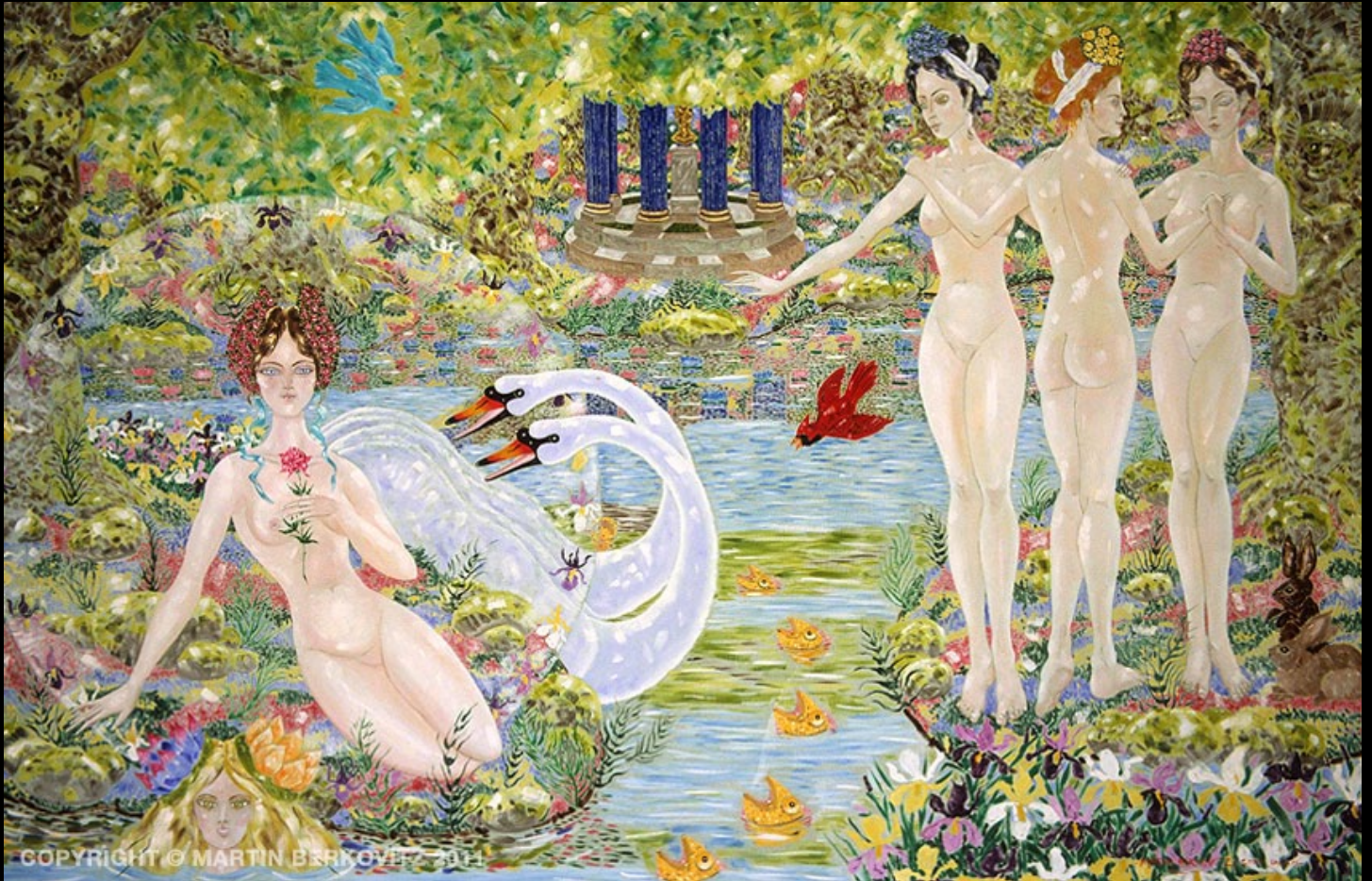
by

Martin Berkovitz

Goldenland first took form in nineteen seventy-two with my series of gouaches, "Lovers of the Four Seasons". This is the world of the nature devas and elementals, that magic realm just behind nature's visible aspect.

I should explain. A deva is part of the angelic kingdom and each deva, for example, the deva of the birch tree, is in effect nature's blueprint for that genus. Elementals of that birch tree genus are nature's construction workers. So you might say a deva is an architect, an elemental, a builder. Of course these are in truth intelligent patterns and energies.

What I have done is to give them poetic, esthetic and figurative form. But while the form is mine, I have endeavored to be true to the essence of my theme. Goldenland is my communion with nature and the enchantment supporting and underlying its surface reality. In this sense the work is more than fantasy or folklore, it is the expression of a transcendent reality.



“Aphrodite & the Graces”
Oil on Linen, 66 in. x 100 in. - 2000



“Great Mother’s Night Journey”
Oil on Linen, Overall 102 in. x 264 in. - 2003



“Ondine’s Vision”

Oil on Linen, 48 in. x 84 in. - 1999



"Dusk: Magician"
Oil on Linen, 40 in. x 48 in. - 1999



“Golden Odine”
Oil on Linen, 48 in. x 84 in. - 1999



"The Wisdom Tree"
Oil on Linen, 40 in. x 60 in. - 1999



"Forest Idyll"
Oil on Linen, 40 in. x 48 in. - 1999



"Pan of the North"
Oil on Linen, 66 in. x 102 in. - 2001



“Autumn River Trilogy”

Oil on Linen, Each panel 66 in. x 102 in., Overall 102 in. x 216 in. - 2001



“Outside & Inside the Faerie Dreamer’s Cottage”
Oil on Linen, 102 in. x 198 in. - 2000



“Self Portrait in Goldenland”
Oil on Linen, 46 in. x 114 in. - 2006



COPYRIGHT © MARTIN BEDKOVITZ 2011

“Victory Island” - Oil on Linen, 60 in. x 84 in. - 2007

Contact:

Martin Berkovitz

(310) 780-9617

info@martinberkovitz.com