

# PORTRAITURE

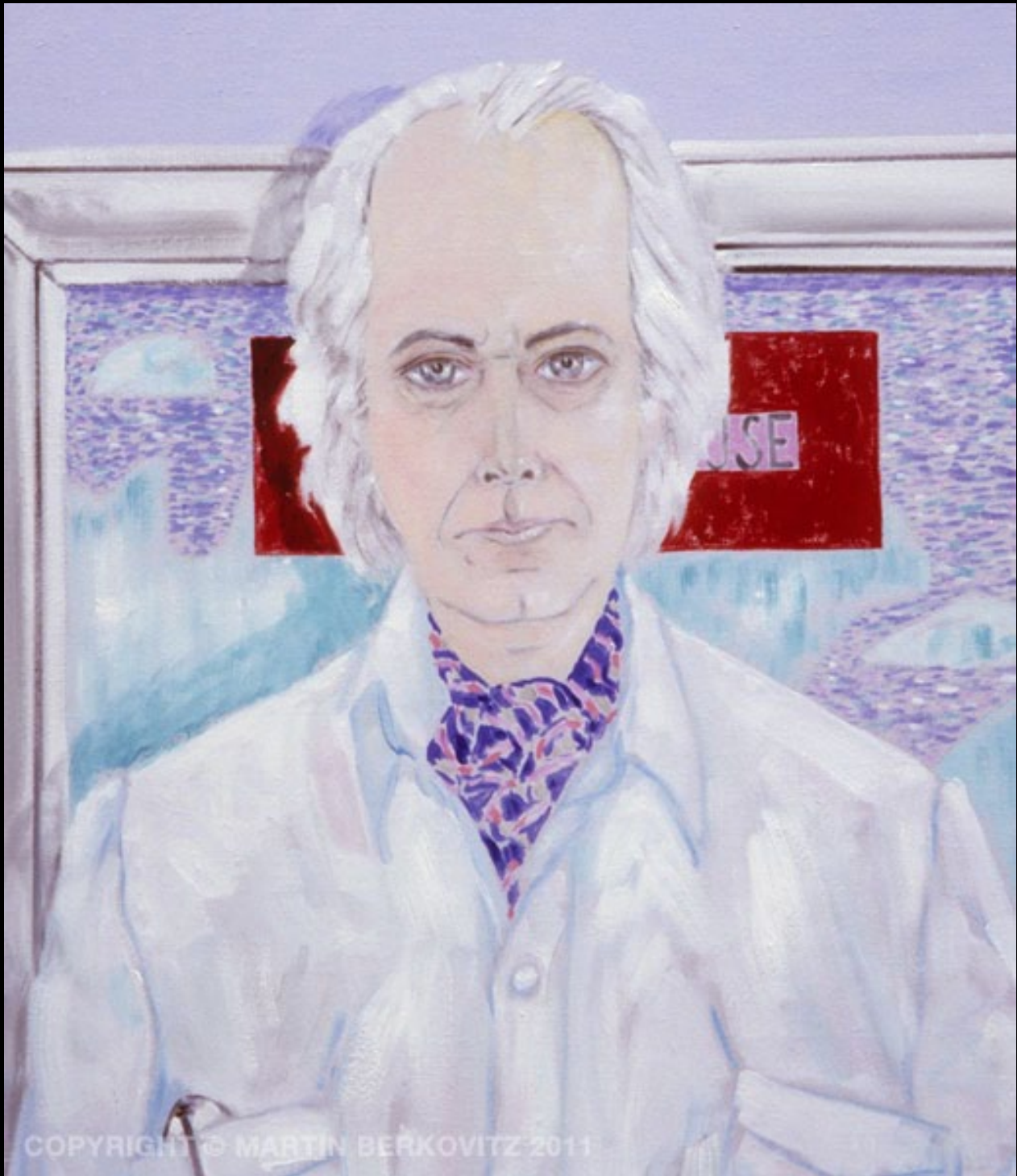
by

Martin Berkovitz

By using real people in imaginary settings I've been able to fuse all the preceding categories. These paintings explore the intersection of our world and the transcendent.



“Self Portrait with Map”  
Oil on Linen, 46 in. x 90 in. - 2007



“Self Portrait with Map (detail)” - 2007





"The Polar Place"  
Oil on Linen, Triptych 102 in. x 198 in. - 2007



“The Polar Place (detail): Leila” - 2007



“The Polar Place (detail): Artist” - 2007





“Leila”

Oil on Linen, 60 in. x 84 in. - 2007



"Leila (detail)" - 2007





“Passage”

Oil on Linen, 4 panels 66 in. x 102 in., Overall 102 in. x 264 in. - 2005



“Passage (detail)” - 2009





“Hall of the Mikhail Cycle”

Oil on Linen, 4 panels 66 in. x 102 in., Overall 102 in. x 264 in. - 2005





“Self Portrait Study from ‘Mikhail’”  
Oil on Linen, 22 in. x 30 in. - 2005





“Mikhail’ (detail): Vera” - 2005

Contact:

Martin Berkovitz

(310) 780-9617

[info@martinberkovitz.com](mailto:info@martinberkovitz.com)