



PRO AIR PONTOON LIFT



PRO AIR PONTOON LIFT **NEW!** 303053

For Pontoons & Tritoons up to 24'

Dims: 24' L x 10.25' W

Deck Height: 18" (not including blue ribs & bow stop)

Weight: 1200 lbs.

Weight capacity: 4,800 lbs.

Introducing Wave Armor's Latest Innovation and Easiest Pontoon lift!

The latest evolution in the Wave Armor lineup delivers our easiest drive-on / drive-off experience yet.

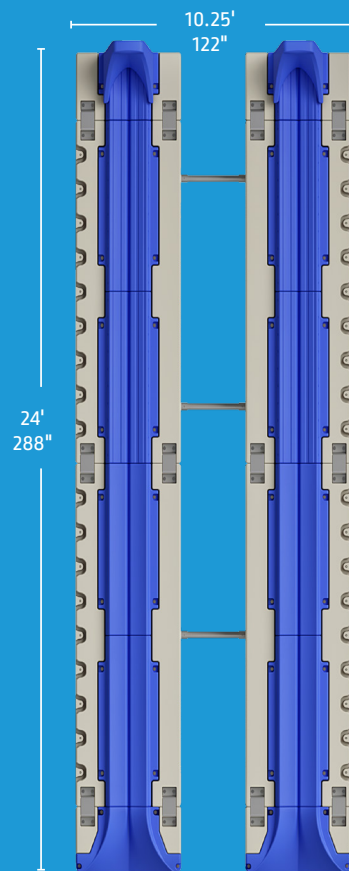
This advanced lift utilizes integrated air and water chambers to raise or lower the entrance at the flip of a switch, simplifying both loading and dry storage.

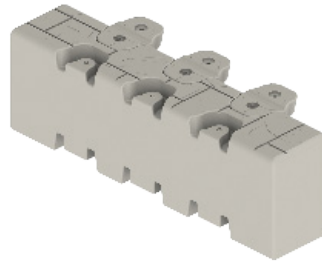
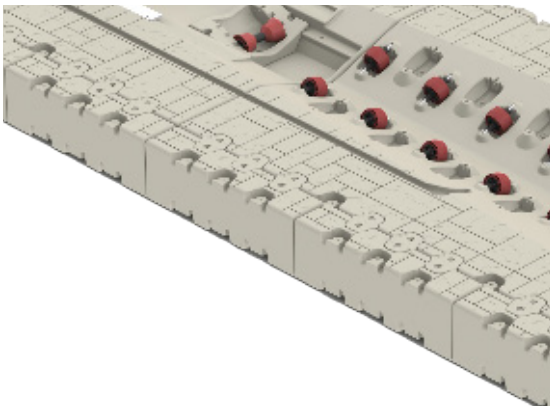
- Dual-chamber system: Air and water assist for controlled lift and launch.
- Low-water capability: Operates effectively in 2.5 ft (0.76 m) or deeper.
- Optimized fit: Designed for 18'-24' pontoons.
- Adjustable bow stop: Allows precise alignment and secure positioning.
- High-and-dry storage: Keeps pontoons elevated for reduced hull growth and maintenance.

PRO AIR SERIES CONTROLLER 24V DC 303313

For best fitment & performance during testing, a lithium Timeusb 25.6V with 25Ah battery was utilized. Not included.

PRO AIR SERIES CONTROLLER 120V AC 303323





PRO SIDE EXTENSION 302514

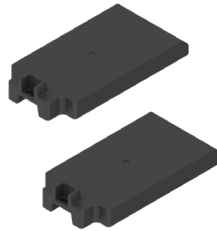
Designed to increase the width of the port by 10" for more walk around room.

- 47.75" L x 14.6" W x 15" H
- Includes 1
- Increases width of port by 10"
- Weight: 20 lbs.
- Weight capacity: 140 lbs.

BUOYANCY BOOSTERS 302159

This buoyancy booster provides an extra 200 lbs. of floatation per booster for a total of 400 lbs. Can be installed along the perimeter of the port in multiple molded-in underside pockets, even after full port installation is completed. No tools or hardware needed.

- 24" x 48", Includes 2



PRO CLEAT 302711

Installs in mounting pockets along perimeter of the port.

- Includes 2 + hardware



PRO CAP FILLER 302414 QTY 4 302415 QTY 24

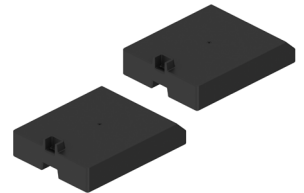
Covers unused mounting pockets.



BUOYANCY BOOSTERS 302601

- 24" x 36" x 9
- Includes 2

Extra 200 lbs. of floatation per booster for a total of 400 lbs.



16-24" TELESCOPING PORT TO FIXED DOCK KIT



301434 FOR 2" PIPE 301435 FOR 4" PIPE

- Includes 2 brackets, 2 U-bolts and hardware
- Requires 2" or 4" pipe sleeves (not included)

RAISED PIPE MOUNT TO FIXED DOCK KIT

302081 FOR 2-3" PIPE

302082 FOR 4" PIPE

302039 EXTRA SUPPORT FOR 2-3" PIPE

302515 EXTRA SUPPORT FOR 4" PIPE

- Includes 2 + hardware



PRO PORT SIDE CONNECTION SLIDE ASSY

302603

Connects from mounting pockets on side of port to H-Beam channel on Wave Dock.

- Qty 2
- Hardware included



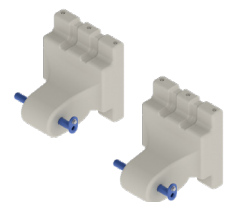
SIDE MOUNT SLIDE ASSY TO FLOATING DOCK 302792

Connects from mounting pockets on side of port 15" tall to floating dock. Allows for easier loading and unloading.

- Includes 2 + hardware
- Requires C-Channel (sold separately #303288)
- Needs part #301347 if used with canopy

PRO PORT TO WAVE DOCK 302196

- Qty 2
- Hardware included



PRO PORT CONNECTOR 303289

- Includes 2 + hardware
- C-Channels sold separately



23.5" C-CHANNELS 303288

- Qty 2



PRO PORT PIPE ANCHORING KIT

302345 2" 302346 3" 302347 4"

- Qty 2
- Hardware included

