



## SCHNEIDER ELECTRIC CONTROL STATION ENCLOSURES

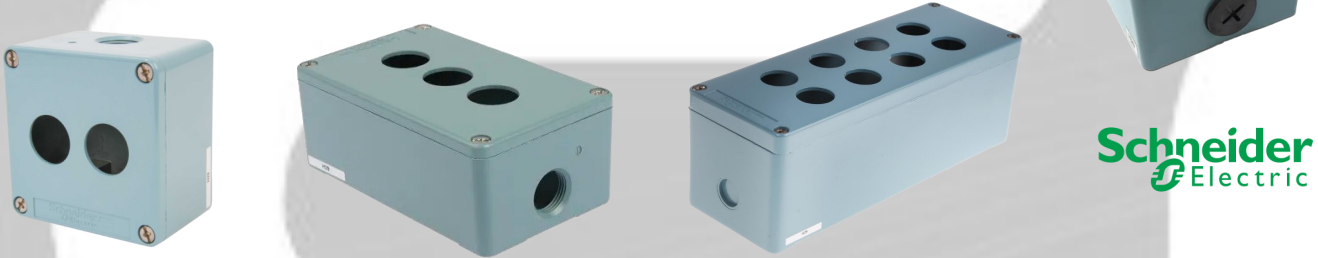
Designed for industry, this range offers operating simplicity, flexibility, and robustness. Used in conjunction with Harmony XB4 range, this metal control station meets the most frequent dialog functions needs.

Empty control stations accommodate customer assembly

Wide offer of push buttons and accessories for commonly encountered functions

Industry: machine builders (automotive, textile, wood)

Services and infrastructure: energy distribution, building, airport



Metal control stations for use with **Harmony** XB4 and XB5 ranges  $\varnothing$  22 mm control signaling units The **Harmony** XAPD and XAPK control stations are ideally suited for industrial, buildings, and infrastructure applications where robustness and aesthetic are needed. They are compatible with the **Harmony** XB4 and XB5 ranges of control and signalling units, providing a wide choice of circular and square heads. The range is compatible with standard and flush mounted units.

## SCHNEIDER ELECTRIC PUSH BUTTONS AND E-STOPS

**Harmony** delivers an innovative and ergonomic design that improves the reliability of panels, machines, and processes.

- The flush-mounting solution: Built-in flush pushbuttons and flush mounting kit accessories.
- Define your style with powerful customization options:
- Pushbuttons with marking, illuminated pushbuttons, and pilot lights caps.
- Markings on the bezel for all built-in flush products and accessories, like legend plates and legend panels.
- Increase operational efficiency for easy location of your emergency stop.



The modular range of  $\varnothing$  22 mm metal control and signalling units combines simplicity of installation, modern standard and flush mounted design, flexibility, and robustness with a high level of customization to meet most industrial applications.

A complete range to provide the relevant functions for your panels and machines.

Pushbutton switches, Selector/key switches, Emergency stop buttons, Multiple-headed pushbuttons, Pilot lights, Illuminated pushbuttons, and selector switches. Various accessories including flush mounting kits, protective covers, and legend plates.

- Conformity with IEC, UL, CSA, CCC EAC, and JIS standards, as well as CE marking and marine approvals
- Up to IP66, 67, 69, 69K, and type 4X protection ratings
- Operating temperature from  $-40^{\circ}\text{C}$  to  $70^{\circ}\text{C}$
- Shock protection level up to IK06
- High vibration resistance with shake-proof terminal screws
- A large set of accessories to customize your panels.
- With various types of connection: screw clamp, connector, Fasten connector, spring terminal, or printed circuit board.



# WIDE SELECTION IN STOCK