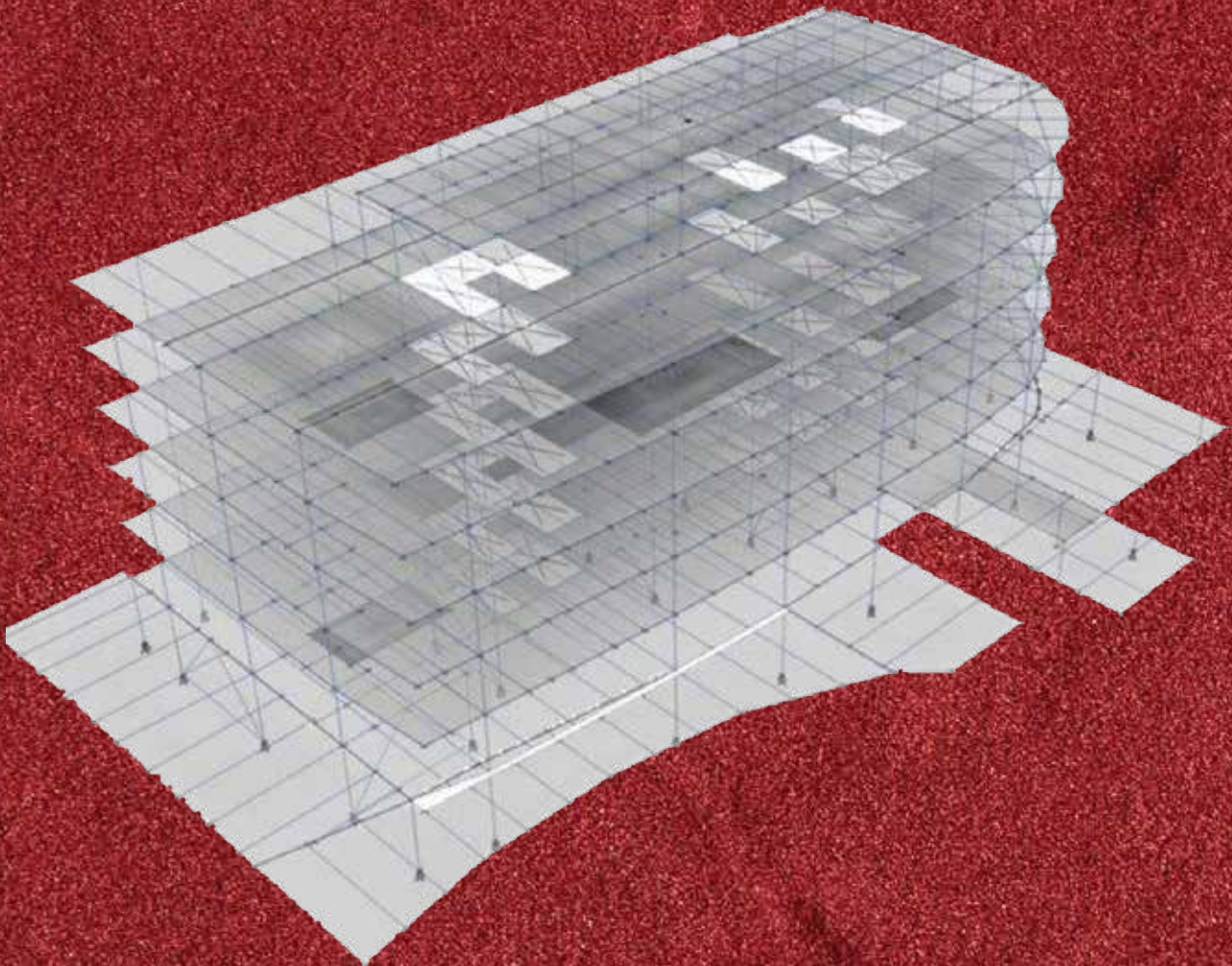




Civil ENGINEERING IIT
www.civilengineeringiit.com

STRUCTURAL INTERNSHIP

7 Months At Pune



Certified by ISO 9001-2015

 **9175364357 | 9545507853**

MISSION, VISION



Vision

We aspire to create competitive manpower in the field of civil engineering by bridging the gap between academic learning and practical requirement of the industry.



Objectives

- Promote Civil Engineering IT Education & Technology in India
- Collaborate to unite on a professional front
- Provide world class computer and engineering education
- Organise paper presentation, conference & seminars and tech fests
- Create an open platform for development of Civil Engineering startup
- Honour outstanding students and personalities



Our Mission

REPRESENT, LEAD, AND SERVE

Representing the Civil Engineering Sector/ industry

We improve understanding of the civil engineering industry among decision makers and increase awareness of the benefits that civil engineering brings to national and global economies. We advocate for the interests of civil engineers in professional development.

Leading the Civil Engineering Sector/ industry

For over a years, we have developed civil engineering professional skills among multiple civil engineers upon which this industry is built. Our aim is to assist Civil engineering industry by educating people and creating a professionally developed competitive manpower.

Serving the Civil Engineering Sector/ industry

We help civil engineering industry to operate safely, smoothly, securely, efficiently by providing competent manpower.

Professional support is provided to civil industry stakeholders with a wide range of civil engineering services and expert services.

WHAT ARE THE HIGHLIGHTS OF THE INTERNSHIP ?

- Theory plus Practical Session will be conducted for Conceptual Understanding.
- You will get Valuable data required for Modelling such as Drawings, excel Sheets, IS Codes, Any other Standards etc You will get Full Educational Setup for Practice Life time support for Doubt Clarification will be given by the Faculty.
- Each Session Videos Will be provided in the form of Recording for Further Practice upto Validity of the course.
- You can directly contact with Faculty on the Whatsapp Group.
- Submission of Each & Every Project for Reviews.
- Software Installation Support.



Training on Zoom Platform on Latest Projects using latest Techniques

TRAINER PROFILE



Name : SAURABH R PATIL
(Structural Design Engineer)

Education : DCE, BE CIVIL, ME Structure, PGDBM, AMIE Trained more than 1000+ students till date.

Experience : 6+ Yrs as Structural Design Engineer and BIM Modeller.

Expert in Earthquake Engineering, Structural Dynamics, RCC, STEEL, PEB, TIMBER, Aluminium, Cold Form Design, BIM Industry

WHAT IS COVERED IN THIS INTERNSHIP ?

SOFTWARE COVERED IN INTERNSHIP

- ETABS BASICS ETABS ADVANCED
- SAP2000
- SAFE
- RCDC
- CSI DETAILER
- STAAD.Pro
- AutoCAD
- REVIT-Architecture
- REVIT-Structure
- Manual design (Excel spreadsheets)
- Manual Design (Hand calculation)

EXTRA MISCELLANEOUS TOPICS

- Detail Review on IS 456-2000.
- Detail Review on IS 875-Part 1.
- Detail Review on IS 875-Part 2.
- Detail Review on IS 875-Part 3.
- Detail Review on IS 1893-2002.
- Detail Review on IS 1893-2016.
- Detail Review on IS 13920-1993.
- Detail Review on IS 13920-2016.
- Detail Review on IS 800-2007.
- Few International code review.

FEW SAMPLE PROJECT ON WHICH YOU WILL BE WORKING

- G+7 Irregular Building Design Subjected to Gravity & Lateral Loads.
- G+5 Storied Steel Building with lateral load.
- G+6 Symmetrical Storey Building Subjected to Gravity & Lateral Loads.
- Steel Truss Warehouse building.
- Watch Tower Design.
- Hoarding Board Design.
- 19 Storied RCC Building Design

- 23 Storied RCC Building Design.
- 15 Storied RCC Building Design.
- 3 storied Residential RCC Building Design.
- 2 storied Residential RCC Building Design.
- 4 storied Residential RCC Building Design.

(No. of projects might differ as per students responsiveness)

IMPORTANT CONCEPTS WITH THEORY AND PRACTICAL LECTURES

- Shell membrane & plate
- Earthquake Engineering
- Wind engineering
- Wind tunnel method
- Stiffness modifiers
- Auto section list command
- Linear static analysis
- Nonlinear static analysis
- Linear dynamic analysis
- Nonlinear dynamic analysis
- RS analysis
- Pushover and Push Down Analysis
- Planning of Column position and orientation
- Slab span Planning
- Live load reduction factor as per IS872-Part 2
- Scale Factor for Dynamic Analysis.
- Centreline location (Beam Centreline & Column Centreline)
- Structural Framing
- Shop Drawing and Detailing of RCC members for Alluform.
- Beta angle Concepts
- Local and global Axes
- Thumb Rules for Structural Design - RCC Structures
- P-Delta analysis
- Temperature analysis
- Construction Sequences analysis
- Shell and frame elements & many more concepts
- (refer presentation).

DETAILED CONTENT OF SOFTWARES

ETABS BASICS

- Introduction to the Welcome Screen
- Reinforced Cement Concrete Design Codes available in ETABS
- Unit System available
- Structural Steel Section Databases Library Available in ETABS
- Structural Steel Design Codes Available in ETABS
- Create uniform grid spacing and simple story data
- Create uniform grid spacing and simple story data (US Units)
- Create Non-Uniform Grid Spacing and Custom Story Data
- Define United States Material Properties
- Define Material Properties for Various Countries
- Define User Material Properties (Customizable Materials)
- Define Reinforcing Bar Sizes
- Define Tendon Sections
- Define Concrete Frame Section Properties
- Define Structural Steel Sections/Members
- Create an I section Property in ETABS
- Define Predefined Structural Steel Properties from Default Structural Steel Libr
- Define Composite Frame Section Properties

- Define RCC Slab Sections
- Define RCC Drop Section
- Define RCC Wall Sections
- Define Structural Member Property with the help of Section Designer
- Define Point Springs, Line Springs, Area Springs and Soil Profiles
- Draw Rectangular Floor and Wall Objects
- Draw Irregular Floor objects
- Draw irregular Wall objects
- Draw Walls in Plan View
- Draw Wall Stacks
- Quick Draw Beams and Columns in Plan, Elevation and 3-D view
- Quick Draw Bracing in Elevation View
- Quick Draw Columns in Plan and 3-d View
- Quick Draw Secondary Beams
- Quick Draw Walls and Wall Openings
- Draw Different types of Beams (Bezier,Spline,Straight Line, Curved Beams etc.)
- Draw Beam, Column and Bracing in Elevation and 3-D view
- Define Temperature Loads at a Joint
- Define Various Types of Time History Functions
- Define Various Types of Response Spectrum Functions
- Define Mass Source being used for Earthquake Analysis
- Define Load Patterns
- Define Load Cases
- Define Load Combinations
- Define Modal Cases
- Define P-Delta Options(Two Options available)

- Assign Restraints to Joint(Example Pinned, Fixed or Roller etc.)
 - Select and Deselect Option
 - Assign Objects(beams/Columns/Slabs) to a Group and Define Them
 - Assign Frame Loads(Point,Distributed, Trapezoidal and Temperature Loads)
 - Assign Joint Loads(Translational Force and Rotational Moment along all axis)
 - Assign Shell Loads (Uniform , Non-Uniform and Load Sets etc.)
-

ETABS ADVANCED

23 Storey High Rise RCC Building as per Indian Standards

- Learn to Read the Architectural Drawings
- Basic Introduction to the Methodology
- Enter the Grid Spacing in the model
- Enter the Storey Data in the model
- Define the Material Properties
- Define Reinforcement Bar Sizes
- Define Frame Sections
- Define Diaphragms , Pier Labels and Spandrel Labels
- Define Snap Options
- Model the RCC Columns and Shear Walls in the Structure
- Model the Cantilever Slab or Projections
- Define Supporting Conditions of the RCC Building
- Model the Retaining Walls
- Assign the Releases to the Structure
- Define Diaphragms(Flexible or Semi Rigid)

- Check for Instability in the Structure
- Define Response Spectrum Function
- Define Dead Loads and Live Loads
- Introduction and Explanation of IS1893:2016
- Define Earthquake Load Pattern
- Define and Assign Wind Load Patterns
- Define the Mass Source
- Define Super Imposed Dead Load , Dead Load and Live Load
- Define Staircase and Super Imposed Dead Loading
- Assign live Load Reduction factors
- Define Response Spectrum Load Case and Modal Cases
- Define Load Combinations
- Understand the ETABS Editor File
- Set the Analysis Options
- Remove the instability Error
- Review the Fundamental Mode Shapes
- Correct the Mode Shapes
- Check the Static Base Shear
- Review the Dynamic Parameters
- Reduce the number of Modes
- Design of RCC Beams and Columns
- Design of Shear Wall
- Export Support Reactions to SAFE
- Model the Structure in SAFE
- Model the Raft Slab in SAFE
- Design of Raft Foundation in SAFE

STAAD Pro

BASIC INTRODUCTION TO THE STAAD Pro SOFTWARE

- Introduction To Staad Welcome Screen And Structure Wizard
- Introduction to GUI of STAAD , Local and Global Axis , Beam and Node Numbers etc
- Introduction to Basic Modelling, Cursors and Repeat Commands
- Introduction to STAAD Editor
- Introduction to Releases and Diaphragm Specifications in STAAD
- Introduction to Offsets Specifications and Modelling of Bracings
- Modelling of Composite Deck, Plate Meshing and Parametric Modelling
- Introduction to Local Axis of the STAAD
- Introduction to Member Specifications , Assigning Properties and Coefficients
- Introduction to Various Types of Foundations in STAAD
- Introduction to Various types of Loadings Types and their assignment
- Introduction to Floor Loading and Groups (Slab Loading)
- Introduction to Floor Loads along the Horizontal Direction
- Introduction to Default Materials, Isotropic and Orthotropic Materials options
- Introduction to Pre Print and Post Print Analysis Commands
- Introduction to Analysis and "Post Processing Mode" to review the Results
- Basics of Wind Loads Guidelines as per ASCE07 and ATC Hazards
- Auto Wind Load Generation on RCC Structure as pe ASCE 07

ANALYSIS OF A SCHOOL BUILDING AS PER IS456,IS13920 AND NBC 2016

- Reading Architectural Drawings of a School Building
- Plan the location of Column in the School Building
- Explanation of Live loading as per IS 875-Part 2 for School Building
- Assign Section Properties and Stiffness Reduction factors for Beams and Columns
- Define Wind and Seismic Definitions as per IS 1893 and IS 875
- Define Wind and Seismic Load Cases as per IS 875-3 and IS1893:2016
- Calculation of Brick wall Dead Loads and Assignment of Loading on the Beams
- Calculation of Dead Loads for Slabs and Application of Dead Loads in STAAD
- Assessment of Live loads as per IS875-Part 2 and Application on Beams
- Application of Equivalent Staircase Loading on RCC Beamst
- Define Response Spectrum, Load Combinations and Mass Source for Seismic Weight
- Define Design Parameters as per IS456 and Interpret the results
- Design and Detailing of Isolated footing as per IS456
- Design and Detailing of Combined Footing as per IS 456
- Explanation of Indian Seismic Detailing Standard IS 13920:2016
- Detailing of Column Main Reinforcement as per IS 456:2000 and IS13920:2016
- Design and Detailing of Slabs as per IS456
- Detailing of Main Bars and Stirrups of Beams as per IS 456 and IS 13920:2016

SAFE

Introduction

Overview
Materials Definition
Isolated Footing
Isolated footing -1
Isolated footing -2

Strip footing

Combined Footing

Raft

Import from etabs

Isolated, strip and raft
from etabs

Eccentric footing

Eccentric footing -1
Eccentric footing-2
Eccentric footing-3
Strap beam

Pile Caps

Import Autocad file

Solid slab
Long term Deflection

Release

one way solid slab
Solid slab templates

Flat slab

Flat slab design
Capital and drop panel
Flat slab templates

Ribbed slab

Concept
Ribbed slab design

HOW DO YOU GET JOB PLACEMENT ASSISTANCE?

➤ WE CONDUCT EXAMINATION FOR YOUR PLACEMENT ASSISTANCE



➤ WRITTEN TEST
➤ MODELLING TEST



➤ MOCK INTERVIEW

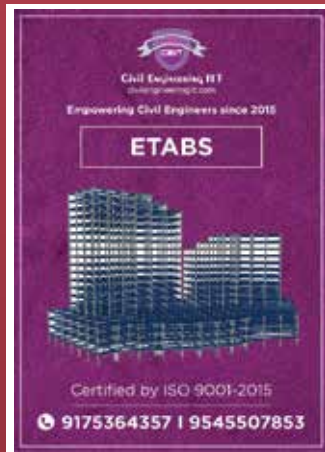


Job Placement Assistance Available For Internships More Than 12 Months Only

OUR OTHER COURSES AVAILABLE ARE



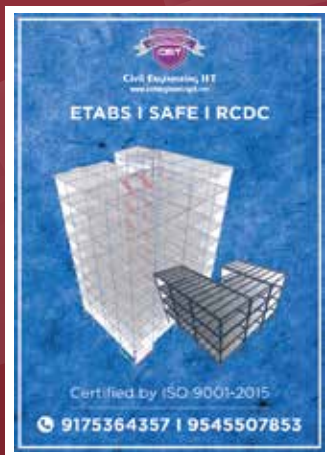
BIM



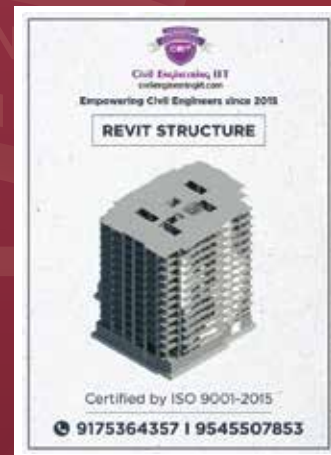
ETABS



SAFE



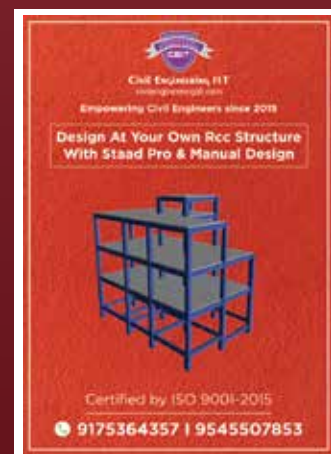
ETABS, SAFE, RCDC



REVIT STRUCTURE



STAAD Pro



**Design at your Own
RCC Structure with STAAD
Pro & Manual Design**

WHAT'S MY BENEFIT ?

Trained **14000+** Civil Engineers



Highly Qualified & Industry Experienced Faculty



Certified By ISO 9001-2015 (QMS)



Certified By Global Euro Accreditation



Recorded Sessions Available On Our Respective App



Doubt Clearing Sessions



Whatsapp group support for lifetime



View Lectures Unlimited Time



No Travel Time For Classroom



HOW TO ENROLL FOR THIS INTERNSHIP

DOWNLOAD
INTERNSHIP
APP →
CLICK HERE



HOW TO SELECT INTERNSHIP & MAKE PAYMENT

Step 1

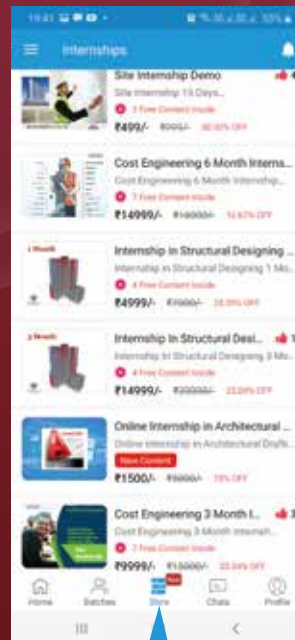


App Home
Screen

Step 2



Step 3



Select Your
Course

Step 4

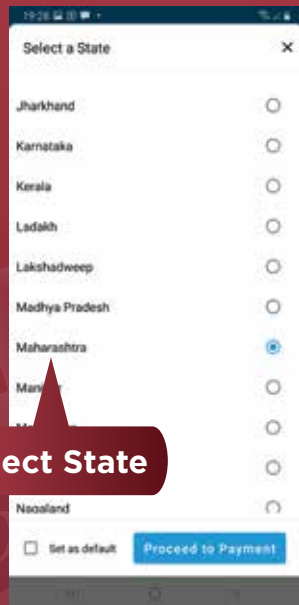


Make Payment

HOW TO BUY THE INTERNSHIP WITH EMI



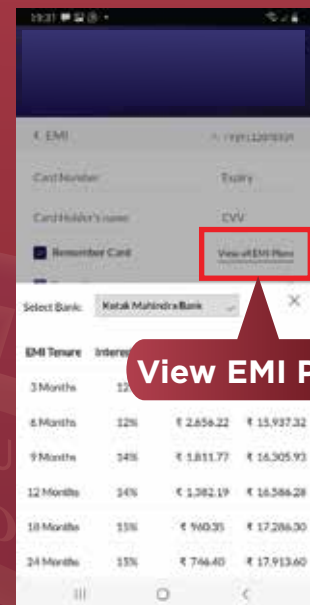
Click On Buy Now



Select State



Select EMI



View EMI Plans

Terms & Conditions

1. Finance options are given for your ease. It is totally depends upon lending banks. Its availability options limited to provided on app. Institute is not involved in that.

EMI OPTION AVAILABLE ON

1. Pre Approved Debit Cards from Selected Banks
2. All Credit Cards
3. Other financial institutions

OUR OFFICE AND CLASSROOM



COLLEGE WORKSHOPS



WORKSHOPS IN VARIOUS CITIES



Aurangabad, Maharashtra



Thane, Mumbai



Nanded, Maharashtra



Nagpur, Maharashtra



Kolhapur, Maharashtra



Amravati, Maharashtra



Nashik, Maharashtra



Ahmednagar, Maharashtra

SITE PHOTOS



Life Republic, Mharunji, Pune



Benelli India Service Center, Ravet, Pune



Finolex Academy of Management & Technology, Ratnagiri



DLF Akruiti Info Parks Pvt. Ltd. - SEZ Project, Hinjewadi Pune



Farmhouse at Theur, Pune, Maharashtra



Residential Project for Wahile, Chakan, Maharashtra

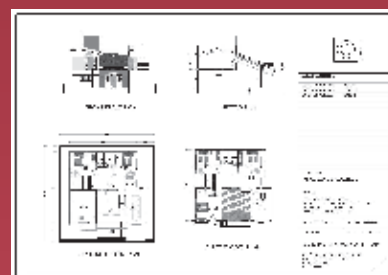
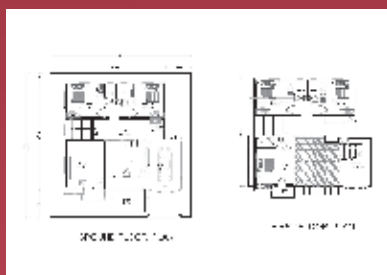
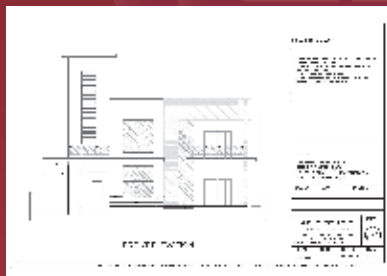
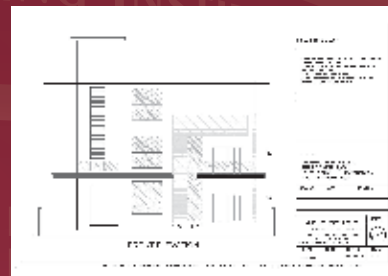
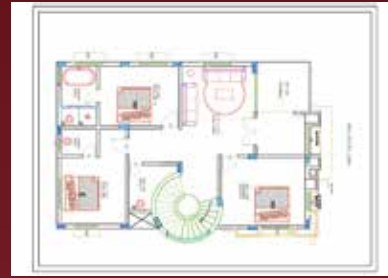


Development Work at IIEBM, Hinjewadi, Pune, Maharashtra



Bungalow Project at Nigadi Pradhikaran, Pune, Maharashtra

OUR PROJECTS



SIR VISHWESHWARYA SCHOLARSHIP





Reaping the power and promise of education

Today, India is witnessing tremendous transformation in the field of education. As the youth aspire for better education and training, they discover a new world of ideas. CEIIT wishes to support the youth and aims to shape a more fulfilling future for them.

For CEIIT, social responsibility is one of the mainstays that support our academic and research work. We believe that our role as a premier educational institution involves something more than just imparting knowledge and skills to our students. We aim to be the active agents of social change to address social concerns. With this responsibility, we take on the role of leader in the creation of a culture of social responsibility in society through our actions. We are committed to defending the ideals, responsibilities and objectives of a socially responsible academic institution.

With this aim, we have offered scholarships to needy students from more than 200 institutions. We aim to set new standards to promote ISR to achieve a greater impact on the youth and India, as a nation.

**SIR VISHWESHWARYA
SCHOLARSHIP**

**500 Scholarships
Exclusively for students from
Rural Background with Merit**

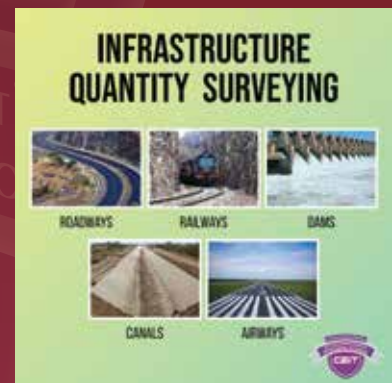
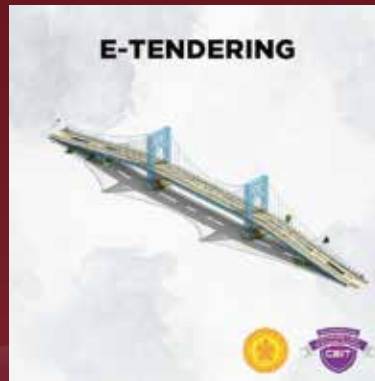
FAQ (Frequently Asked Questions)

1. When are the batches Planned? -Batches are formed every month, for more details contact 9112078538 / 34 / 39
2. Is this course available in Online/Offline ? - Yes, courses are available on both Modules
3. What are the Methods for payment of fees?-Payment are accepted Only via CEIT App . There are lot of options of payment on the App like Net banking, Debit cards, credit cards, EMI on Credit Cards, Wallets.
4. Can I get Installments in fee? - Fees must be paid in one go to our institute However there are some EMI facilities provided from bank, you can check its procedure on app, or contact 9112078538.
5. Can I cancel my admission ? - No, admission once taken cant be cancelled and fees once paid is non refundable for any reason. Admission is non transferable at any circumstances
6. How to Download App & Register for Course ? - You can do with Various Ways-
 - **Android App Link CEIT App:** bit.ly/ceiit_app
 - **Android App Link Internship App:** https://bit.ly/internship_app
 - **Android App Link TenderGuru App:** <https://bit.ly/tenderguru>
 - **Steps to login using iPhone, CEIT Phone:** <https://bit.ly/ceiitios>
 1. Download Classplus App from App store.
 2. Enter org code of your app. (Org code - ceiit)
 3. Enter mobile number and click on Continue.
 4. Enter the OTP and Verify. It's Done.

Note: Register using as a Student, not parent.
7. Are Payment accepted on the spot/offline? - No, Due to ovelwhelming response our batches are full so no on the spot entries allowed. Due to limited seats, making seating arrangements for spot entries gets difficult.
8. Where can i find the Syllabus content of course - You can find it on our respective apps.

9. Are you providing Placements ? - Yes, We offer Placement support to our Interns who has taken more than 12 Months internship. There is no placement for this course, but we are adding you in our Jobs group specially for our students, you will find reference jobs over there.
 10. Where do the classes gets conducted ? - Online on Zoom App & Offline At Pune Main Institute.
 11. Teaching faculty name – Can be found in the Broucher.
 12. Whether notes are provided ? – Yes in Soft copy we will provide important reference material.
 13. How much discount will you offer on courses ? - CEiiT Dicount Policy is there, we offer discounts based on the courses.
 14. Where we get Software ? – After admission we will guide you completely in getting necessary softwares installed on your system.
 15. Is there any Demo lecture? Yes, you can find it on our App.
 16. What if we miss any lecture: All our sessions are recorded and uploaded on our App only?- You can watch and download them in app only for offline viewing.
 17. What is the Duration of the validity of these Recorded sessions? You can watch the recorded session unlimited time for the period mentioned on app as “Validity”
 18. Information about current batch such as batch timing , Start date, Syllabus covered in current batch, etc.: For more details contact 9112078538 / 34 / 39
 19. When do we get Certificate? & How? - Certificate will be issued after completion of the course, you need to apply for it. Certificates issued in Digital Formats. Hard copy can also be provided on your request with a nominal cost.
 20. Institute Establishment & more detail about the institute ? - Institute is establised in the year 2015.
- Visit us on **www.civilengineeringiit.in** & **www.civilengineeringiit.com** / on our social Media Platforms **civilengineeringiit** (Facebook, Instagram, Telegram, LinkedIn, Youtube)

OUR OTHER ESSENTIAL TRAINING FOR CIVIL ENGINEERS



VISIT OUR CEIT APPS



CEIIT APP



ETENDERLAB APP



INTERNSHIP APP



TENDER GURU

OUR HONOURABLE INDUSTRY SPEAKERS



ER. Subhash
Pathak



ER. Shrirang
Palande



ER. Prakash
Medhekar



ER. Mahendra
Avhad



ER. Satish
Kumar Nair



ER. Rajesh
Jujare



ER. Prakash
Bhat



ER. Mayur
Pangrekar



ER. Kedar
Shelar



ER. Rupali
Desai



ER. Mitesh
Bhatt

HOW TO CONTACT US ?



3rd Floor, Ketaki Premises, Beside Alka Talkies,
Navi Peth, Near Deccan Gymkhana, Pune 411030



structures@civilengineeringiit.in



93565 57379 / 91753 64357

VISIT OUR SOCIAL MEDIA SITES

