

DD-50

Undercounter Dishwasher



DT-50

Touchscreen Undercounter Dishwasher



Undercounter Dishwasher
Technical advantages and features:

- Up and down rotary washing and rinsing, full coverage of tableware, to ensure the cleaning effect.
- Using highly intelligent and precise control technology, energy consumption is reduced by more than 20-30% compared with the traditional one.
- Push-button operating panel.
- Unique mezzanine door design, both thermal insulation, thermal insulation function, and effectively reduce noise.
- The whole machine is made of stainless steel 304, and all spare parts are made of high-quality products at home and abroad.
- Efficient Italian water pump ensures washing power.
- Fully closed bottom plate, anti-pest and anti-rodent design.

Optional accessories:

- Stainless steel workbench, stainless steel high pressure shower, liquid dispenser, special tray



Undercounter Dishwasher argument

Product name	Undercounter Dishwasher
Product model	DD-50
Overall dimensions (mm)	570*620*796
Rated voltage	220V 380V/50Hz /3P (Three phase five wire)
Rated power	5.9KW 7.4KW
Washing heating power	1KW 1KW
Rinsing heating power	4.5KW 6KW
Washing pump power	0.37KW
Washing temperature	55 - 65 °C
Rinsing temperature	80 - 90 °C
Washing capacity	50 basket/h
Water consumption	2.3L/basket

Installation requirements

basketCable:	4mm ² x3、4mm ² x3+2.5mm ² x2 (National standard)
Switch:	≥32A、≥25A (With leakage protection)
Inlet pipe diameter:	4epimeron(DN15)
Drainage pipe diameter:	Φ40
Inlet pressure:	0.15-0.6Mpa
Inlet water temperature:	10-60°C
Water inlet hardness:	≤50mg/L

Touchscreen Undercounter Dishwasher argument

Product name	Touchscreen Undercounter Dishwasher
Product model	DT-50
Overall dimensions (mm)	570*620*796
Rated voltage	220V 380V/50Hz /3P (Three phase five wire)
Rated power	5.9KW 7.4KW
Washing heating power	1KW 1KW
Rinsing heating power	4.5KW 6KW
Washing pump power	0.37KW
Washing temperature	55 - 65 °C
Rinsing temperature	80 - 90 °C
Washing capacity	50 basket/h
Water consumption	2.3L/basket

Simple operation, health and safety. Economical and efficient, widely used in hotels and hotels

WD-60

Hood Type Dishwasher



Hood Type Dishwasher Technical advantages and features:

- Push-button operating panel, digital temperature display, easy to use.
- Open the door automatically stop cleaning induction control, prevent high temperature splash scald users.
- Stainless steel upper and lower removable cleaning arm for easy cleaning and maintenance.
- The main washing arm concave anti-blocking nozzle design, water distribution is more uniform, washing effect is more stable.
- Water pump and other main electrical accessories are imported, safe and reliable.
- Body water inlet comes with double filter valve to prevent plugging of water inlet valve.
- The whole machine and internal parts are made of stainless steel, durable.
- According to customer needs, the body built-in liquid dispenser, saving space.
- National security certification, in line with GB4706 standards.
- Fully closed bottom plate, anti-pest and anti-rodent design.

Installation requirements

- **basketCable:** 6mm²x3+4mm²x2 (National standard)
- **Switch:** ≥40A (With leakage protection)
- **Inlet pipe diameter:** 4epimeron(DN15)
- **Drainage pipe diameter:** Φ40
- **Inlet pressure:** 0.15-0.6Mpa
- **Inlet water temperature:** 10-60℃
- **Water inlet hardness:** ≤50mg/L
- **Opening height:** 1.9m

Full electronic intelligent control panel, microcomputer program control,Easy to operate.



Optional accessories:

- Stainless steel workbench, stainless steel high pressure shower, liquid dispenser, special tray

Hood Type Dishwasher argument

Product name	Hood Type Dishwasher
Product model	WD- 60
Overall dimensions (mm)	700*800*1450
Rated voltage	380V/50Hz /3P (Three phase five wire)
Rated power	15.8KW
Washing heating power	3KW
Rinsing heating power	12KW
Washing pump power	0.75KW
Washing temperature	55 -65 ℃
Rinsing temperature	82 -90 ℃
Washing capacity	60 basket/h
Water consumption	2.3L/basket

Opening height	1.9m
----------------	------

LD-60

Hood Type Dishwasher



Hood Type Dishwasher

Technical advantages and features:

- The water cylinder adopts integral drawing. Arc Angle design, no sanitary dead Angle, easy to clean.
- Push-button operating panel, digital temperature display, easy to use.
- Open the door automatically stop cleaning induction control, prevent high temperature splash scald users.
- Stainless steel upper and lower removable cleaning arm for easy cleaning and maintenance.
- The main washing arm concave anti-blocking nozzle design, water distribution is more uniform, washing effect is more stable.
- Water pump and other main electrical accessories are imported, safe and reliable.
- Body water inlet comes with double filter valve to prevent plugging of water inlet valve.
- The whole machine and internal parts are made of stainless steel, durable.
- According to customer needs, the body built-in liquid dispenser, saving space.
- National security certification, in line with GB4706 standards.
- Fully closed bottom plate, anti-pest and anti-rodent design.

Hood Type Dishwasher argument

Product name	Hood Type Dishwasher
Product model	LD- 60
Overall dimensions (mm)	700*800*1450
Rated voltage	380V/50Hz /3P (Three phase five wire)
Rated power	15.8KW
Washing heating power	3KW
Rinsing heating power	12KW
Washing pump power	0.75KW
Washing temperature	55 -65 °C
Rinsing temperature	82 -90 °C
Washing capacity	60 basket/h
Water consumption	2.3L/basket

Note: See previous page for installation requirements

WT-60

Hood Type Dishwasher



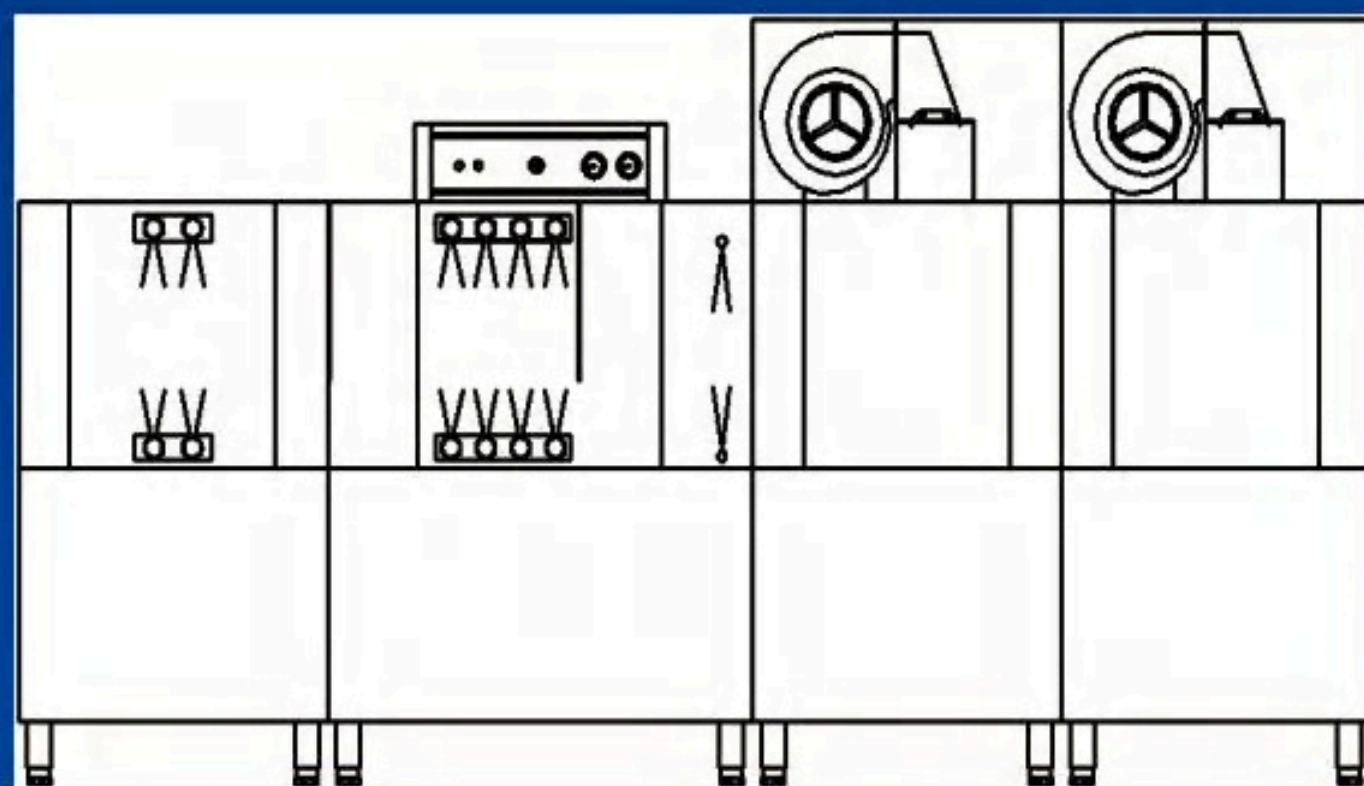
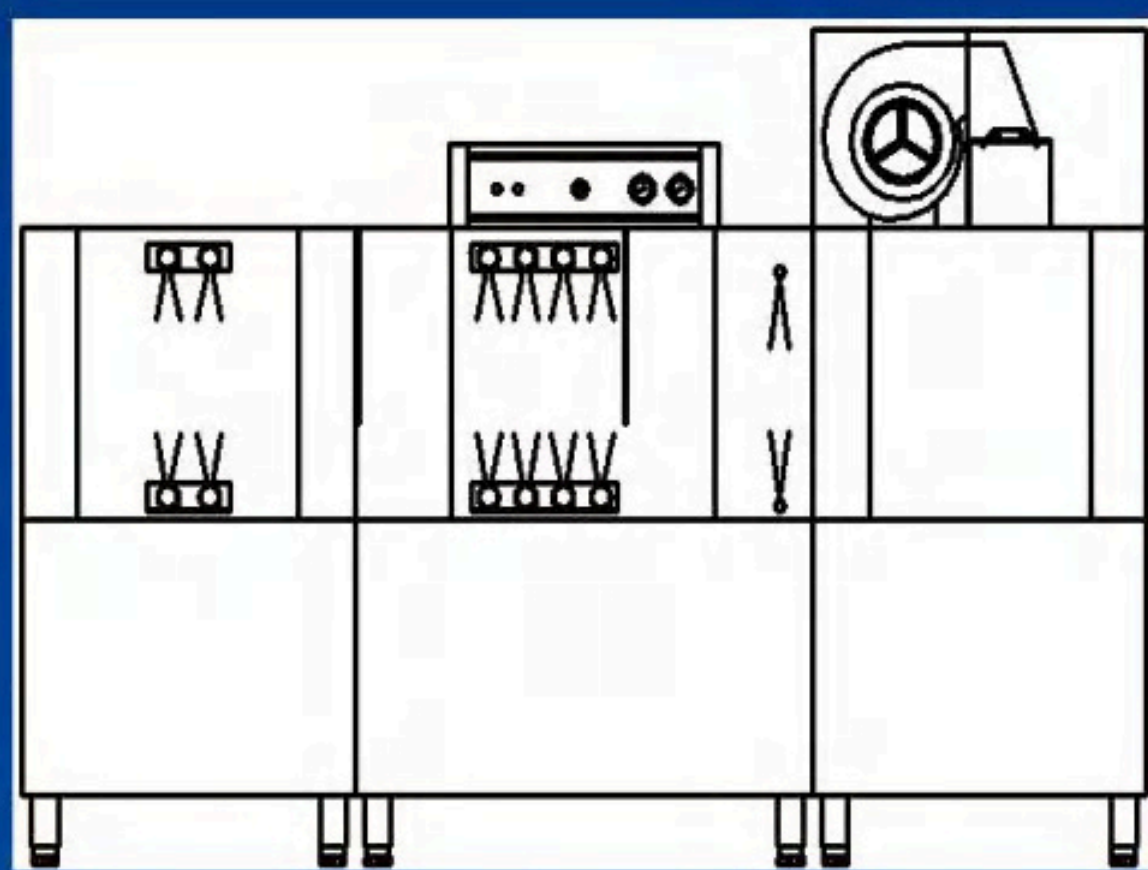
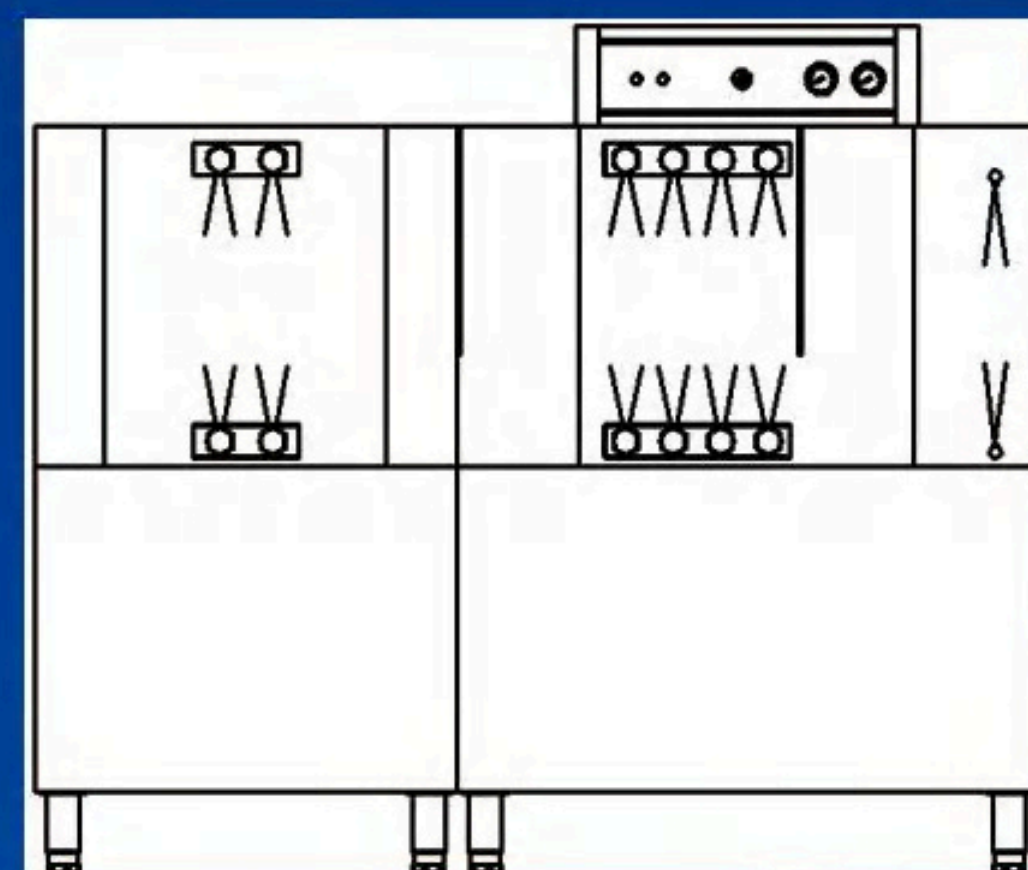
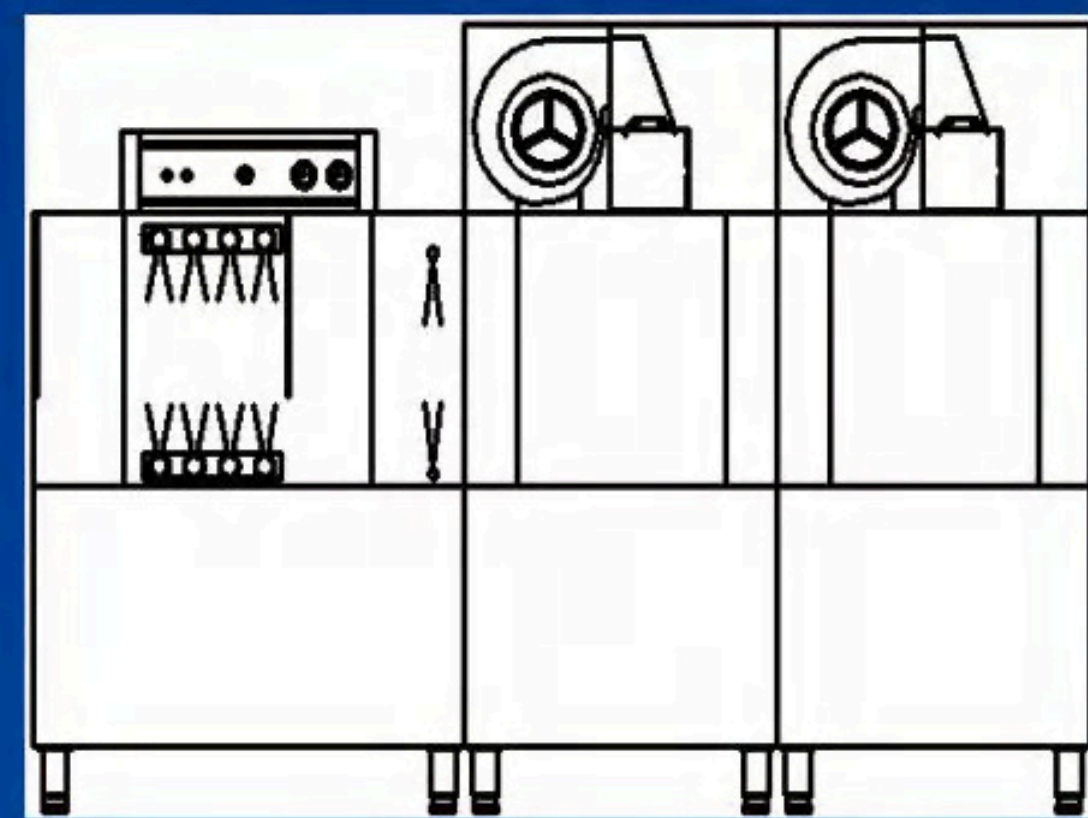
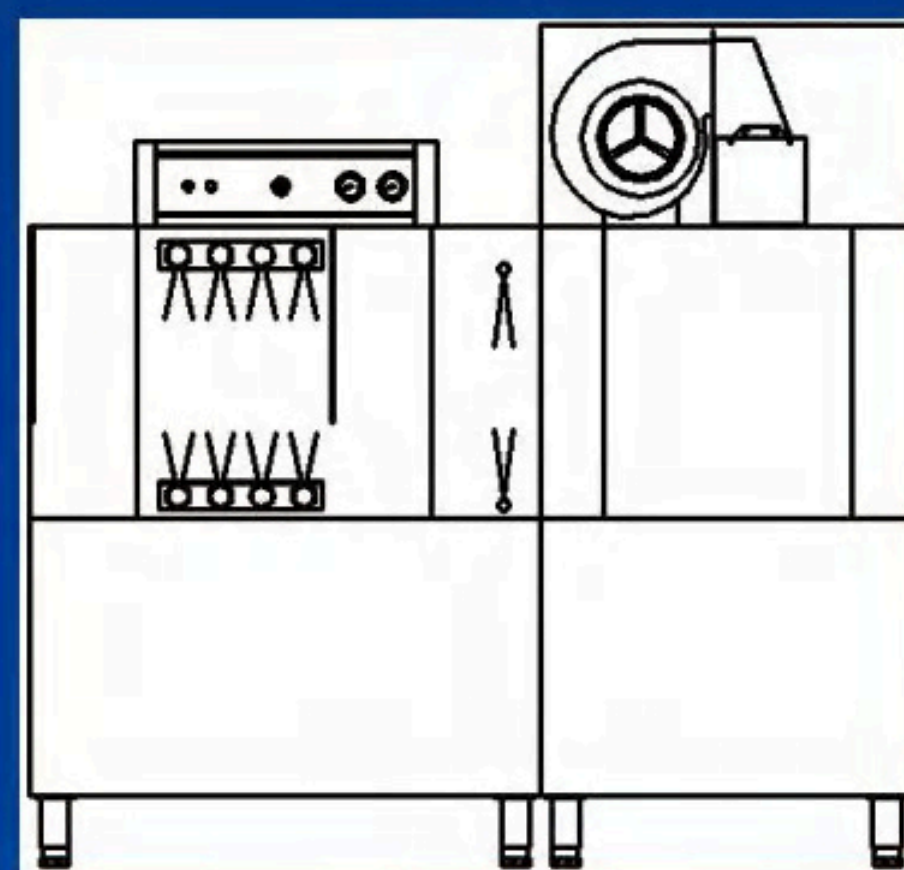
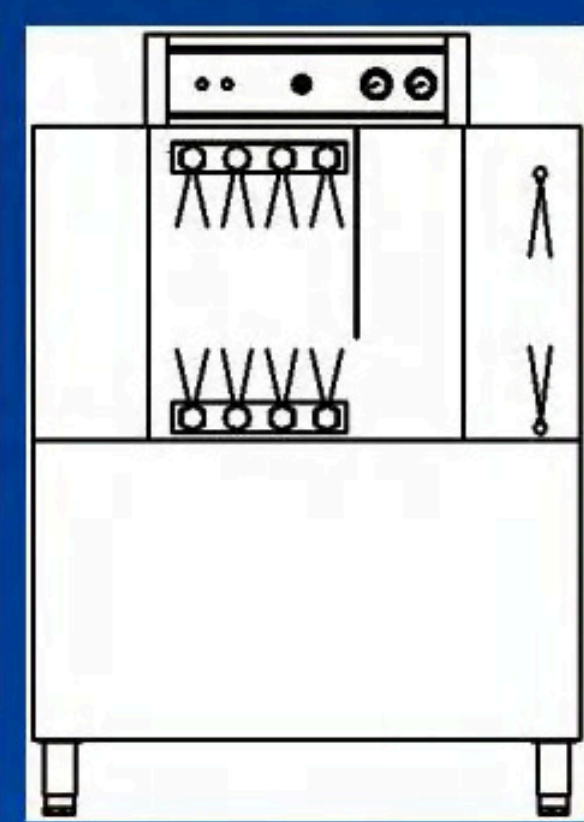
- Optional double heat shield, dual water pump, waste heat recovery device.

Hood Type Dishwasher argument

Product name	Hood Type Dishwasher
Product model	WT-60
Overall dimensions (mm)	700*800*1450
Rated voltage	380V/50Hz /3P (Three phase five wire)
Rated power	15.8KW
Washing heating power	3KW
Rinsing heating power	12KW
Washing pump power	0.75KW
Washing temperature	55 -65 °C
Rinsing temperature	82 -90 °C
Washing capacity	60 basket/h
Water consumption	2.3L/basket

Note: See previous page for installation requirements

Basket Conveyor Dishwasher argument



Technical parameter

Installation requirements

Product name	Single cylinder channel dishwasher	Single cylinder drying channel dishwasher	Single cylinder double drying channel dishwasher	Double cylinder channel dishwasher	Double cylinder drying channel dishwasher	Double cylinder double drying channel dishwasher
Product model	BD-200	BD-200-D	BD-200-2D	BD-200-2P	BD-200-2PD	BD-200-2P2D
Overall dimensions (mm)	1100X730X1570	1900X730X1800	2700X730X1800	1900X730X1570	2700X730X1800	3500X730X1800
Rated voltage	380V/50Hz/3P (Three phase five wire)	380V/50Hz/3P (Three phase five wire)	380V/50Hz/3P (Three phase five wire)	380V/50Hz/3P (Three phase five wire)	380V/50Hz/3P (Three phase five wire)	380V/50Hz/3P (Three phase five wire)
Rated power (KW)	37.8	47.9	58	44.5	54.7	64.7
Prewash heating power (KW)	/	/	/	6	6	6
Washing heating power (KW)	9	9	9	9	9	9
Rinsing heating power (KW)	27	27	27	27	27	27
Drying heating power (KW)	/	9	9X2	/	9	9X2
Drive motor (KW)	0.25	0.25	0.25	0.25	0.25	0.25
Prewash water pump (KW)	/	/	/	0.75	0.75	0.75
Washing pump (KW)	1.5	1.5	1.5	1.5	1.5	1.5
Drying fan (KW)	/	1.1	1.1X2	/	1.1	1.1X2
Washing temperature (℃)	55-60	55-60	55-60	55-60	55-60	55-60
Rinse temperature (℃)	82-90	82-90	82-90	82-90	82-90	82-90
Washing capacity (basket/hour)	200	200	200	250	250	250
Water consumption (L/h)	300-350	300-350	300-350	300-350	300-350	300-350
cable	16mm ² X3+10mm ² X2 (National standard)	25mm ² X3+16mm ² X2 (National standard)	25mm ² X3+16mm ² X2 (National standard)	25mm ² X3+16mm ² X2 (National standard)	25mm ² X3+16mm ² X2 (National standard)	25mm ² X3+16mm ² X2 (National standard)
On and off	≥160A (With leakage protection)	≥200A (With leakage protection)	≥200A (With leakage protection)	≥200A (With leakage protection)	≥200A (With leakage protection)	≥200A (With leakage protection)
Inlet diameter	4 epimeron (DN15)	4 epimeron (DN15)	4 epimeron (DN15)	4 epimeron (DN15)	4 epimeron (DN15)	4 epimeron (DN15)
Drain diameter	Φ40	Φ40	Φ40	Φ40	Φ40	Φ40
Inlet pressure	0.15-0.6Mpa	0.15-0.6Mpa	0.15-0.6Mpa	0.15-0.6Mpa	0.15-0.6Mpa	0.15-0.6Mpa
Inlet water temperature	10-60℃	10-60℃	10-60℃	10-60℃	10-60℃	10-60℃
Water inlet hardness	≤50mg/L	≤50mg/L	≤50mg/L	≤50mg/L	≤50mg/L	≤50mg/L

BD-200

Basket Conveyor Dishwasher



Basket Conveyor Dishwasher Technical advantages and features:

- Optional 1.35m double rinse channel dishwasher.
- One-click operation panel, easy to use.
- Automatic induction tableware cleaning system, no basket into the machine automatic standby, energy saving and consumption reduction.
- Open the door automatically stop cleaning induction control, prevent high temperature splash scald users.
- The drive system is safe and efficient: the drive motor has an automatic overload protection device, and two different transmission speeds can be obtained by adjusting the gear above the rotating disk.
- Stainless steel upper and lower removable cleaning arm for easy cleaning and maintenance.
- The main washing arm concave anti-blocking nozzle design, water distribution is more uniform, washing effect is more stable.
- Water pump and other main electrical accessories are imported, safe and reliable.
- Body water inlet comes with pressure reducing valve, easy to adjust and stabilize the water pressure when connecting the water pipe.
- The whole machine and internal parts are made of stainless steel, durable.
- According to customer needs, the body built-in liquid dispenser, saving space.
- According to customer needs, add assembly pre-washing function, drying function module.
- Fully closed bottom plate, anti-pest and anti-rodent design.
- Entrance three layers of water curtain, anti-splash.

BD-200-D

Single cylinder drying channel dishwasher



BD-200-2PD

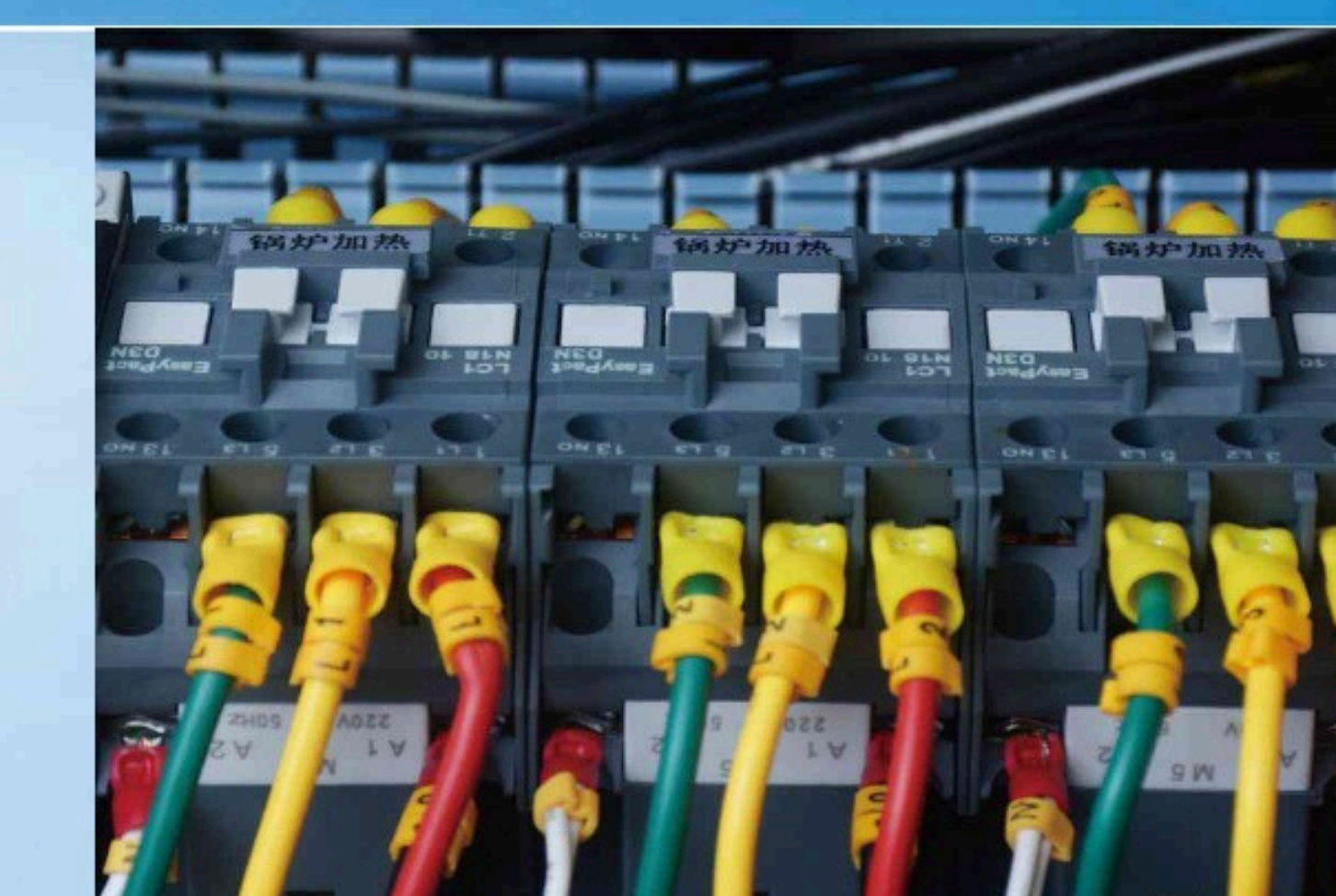
Double cylinder drying channel dishwasher



Compact control system



One-button power start,
easy to operate, circular pointer temperature display,
I know for sure.



Ac contactors, relays and other core electrical
components, All use Schneider and other
international well-known brands, Quality guaranteed.



Schematics of dish framing.

FT-2300

Flight Type Dishwasher



Flight Type Dishwasher

Technical advantages and features:

- Reasonable and compact shape size, to ensure the washing effect at the same time, minimize the occupation of kitchen space.
- Simple digital panel, temperature display at a glance, easy to operate.
- The side panel of the electrical box is equipped with an emergency stop switch, which is convenient for the operator to stop the operation of the machine.
- Chain conveyor adopts high temperature resistance, corrosion resistance, health and non-toxic engineering plastic net claw, wide applicability.
- The drive motor overload device can stop operation in time in the case of overload to prevent damage to the machine and tableware.
- The outlet end is equipped with a limit switch to prevent damage caused by tableware not being unloaded in time.
- Fully closed bottom plate, anti-pest and anti-rodent design.
- Transmission speed three switch, free choice of speed. (Three speed options for different washing requirements)
- Three layers of water curtain design, anti-splash.
- Super short standby heating time, improve operating efficiency, patented design.
- Integrated main washing arm for easy installation and disassembly.

Flight Type Dishwasher argument

Product name	Flight Type Dishwasher
Product model	FT-2300
Overall dimensions (mm)	2300*780*1600
Rated voltage	380V/50Hz /3P (Three phase five wire)
Rated power	38.4KW
Washing heating power	9KW
Rinsing heating power	27KW
Drive motor	0.4KW
Washing pump power	2KW
Washing temperature	55 -65 °C
Rinsing temperature	82 -90 °C
Washing capacity	3000-5000 disc/h
Water consumption	350liters/h

Installation requirements

basketCable:	16mm ² x3+10mm ² x2 (National standard)
Switch:	≥120A (With leakage protection)
Inlet pipe diameter:	4epimeron(DN15)
Drainage pipe diameter:	Φ40
Inlet pressure:	0.15-0.6Mpa
Inlet water temperature:	10-60°C
Water inlet hardness:	≤50mg/L



Display control system

Simple digital panel temperature display, easy to operate.

Ac contactors, relays and other core electrical components are made of Schneider and other international well-known brands.

Quality guaranteed.

Optional accessories:

- Stainless steel workbench, stainless steel high pressure shower, liquid dispenser, special tray

HP-2300

Heat Pump Dishwasher



Heat Pump Dishwasher argument

Product name	Heat Pump Dishwasher
Product model	HP -2300
Overall dimensions (mm)	2300*780*1600
Rated voltage	380V/50Hz /3P (Three phase five wire)
Rated power	29.4KW
Washing heating power	9KW
Rinsing heating power	18KW
Drive motor	0.4KW
Washing pump power	2KW
Washing temperature	55 -65 °C
Rinsing temperature	82 -90 °C
Washing capacity	3000-5000 disc/h

Water consumption	350liters/h
-------------------	-------------

Heat Pump Dishwasher Technical advantages and features:

- No need to install a range hood.
- Improve the kitchen environment.
- Energy saving and consumption reduction, reduce customer costs.
- Reasonable and compact shape size, to ensure the washing effect at the same time, minimize the occupation of kitchen space.
- Simple digital panel, temperature display at a glance, easy to operate.
- The side panel of the electrical box is equipped with an emergency stop switch, which is convenient for the operator to stop the operation of the machine.
- Chain conveyor adopts high temperature resistance, corrosion resistance, health and non-toxic engineering plastic net claw, wide applicability.
- The drive motor overload device can stop operation in time in the case of overload to prevent damage to the machine and tableware.
- The outlet end is equipped with a limit switch to prevent damage caused by tableware not being unloaded in time.
- Fully closed bottom plate, anti-pest and anti-rodent design.
- Transmission speed three switch, free choice of speed. (Three speed options for different washing requirements)
- Three layers of water curtain design, anti-splash.
- Super short standby heating time, improve operating efficiency, patented design.
- Integrated main washing arm for easy installation and disassembly.

Installation requirements

basketCable:	16mm ² x3+10mm ² x2 (National standard)
Switch:	≥120A (With leakage protection)
Inlet pipe diameter:	4epimeron(DN15)
Drainage pipe diameter:	Φ40
Inlet pressure:	0.15-0.6Mpa
Inlet water temperature:	10-60°C
Water inlet hardness:	≤50mg/L



Display control system

Simple digital panel temperature display, easy to operate.
Ac contactors, relays and other core electrical components are made of Schneider and other international well-known brands.
Quality guaranteed.

Optional accessories:

- Stainless steel workbench, stainless steel high pressure shower, liquid dispenser, special tray

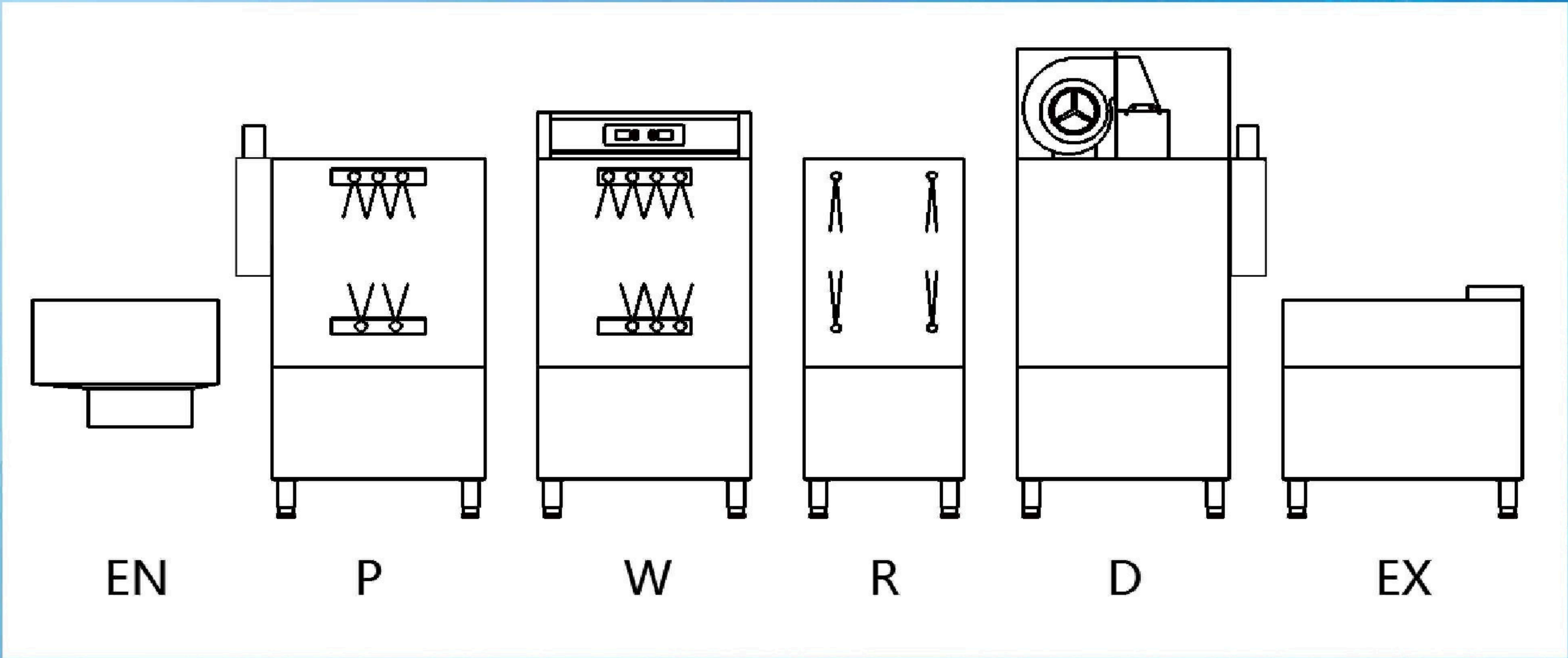
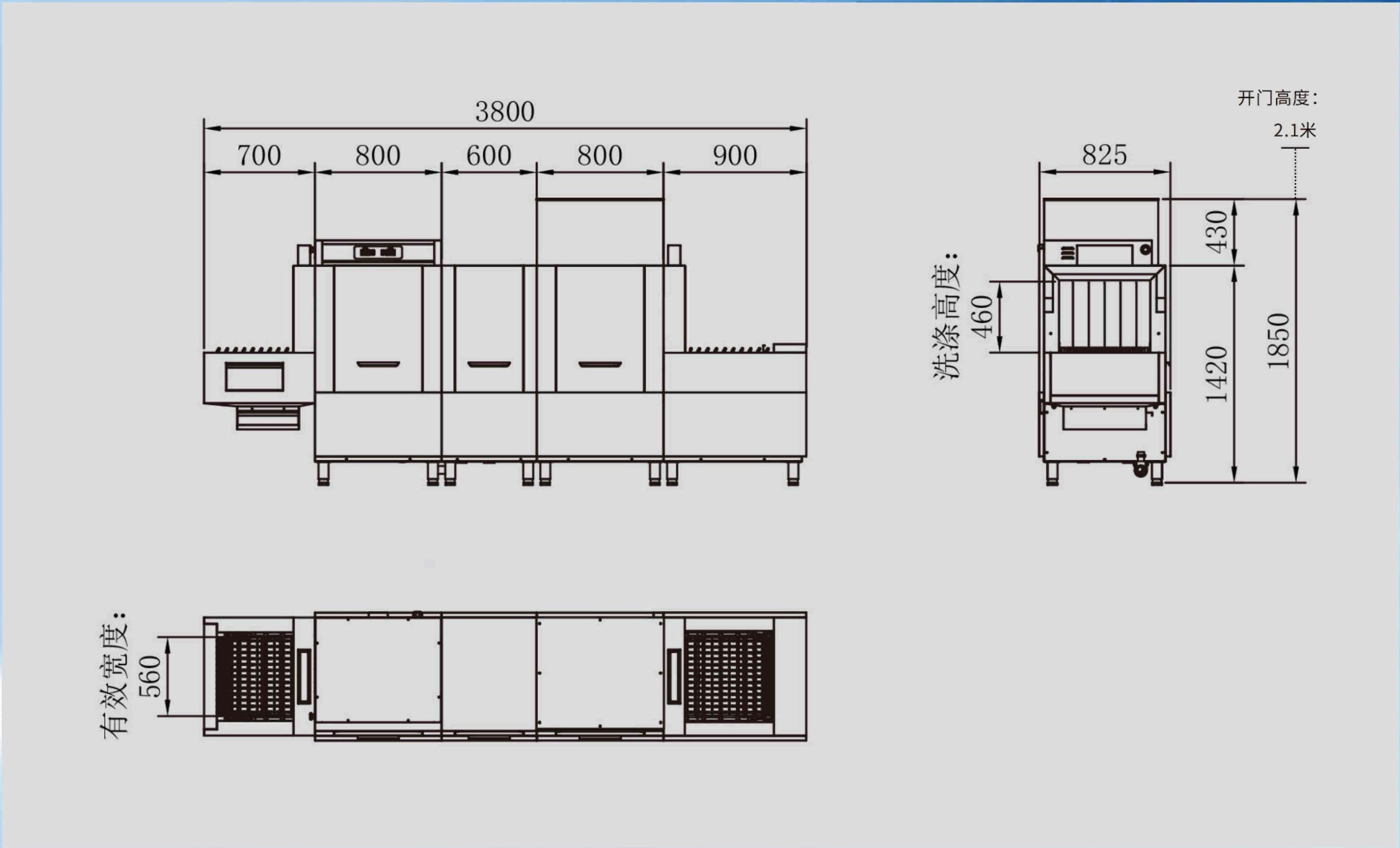
FT-3000

Flight Type Dishwasher



Flight Type Dishwasher Technical advantages and features:

- The entrance end is equipped with a drawer type slag filter device, and the filter screen can be taken out in time for cleaning during the operation of the machine.
- The side panel of the electrical box is equipped with an emergency stop switch, which is convenient for the operator to stop the operation of the machine.
- Chain conveyor adopts high temperature resistance, corrosion resistance, health and non-toxic engineering plastic net claw, wide applicability. Dual rinsing system to ensure washing effect.
- It can be configured with efficient pre-washing and drying system, so that the tableware hygiene standard is higherThe drive motor overload device can stop operation in time in the case of overload to prevent damage to the machine and tableware.
- The outlet end is equipped with a limit switch to prevent damage caused by tableware not being unloaded in time.
- Flexible modular combination design, according to the size of the field space to choose the appropriate function module.
- Fully closed bottom plate, anti-insect and anti-phoenix design.
- Electronic board control with alarm and fault diagnosis.
- Super short standby heating time, improve work efficiency.
- Super short standby heating time, improve work efficiency.
- Transmission speed three switch, free choice of speed. (Three speed options for different washing requirements)
- Heat preservation patent, prevent 30% heat loss.



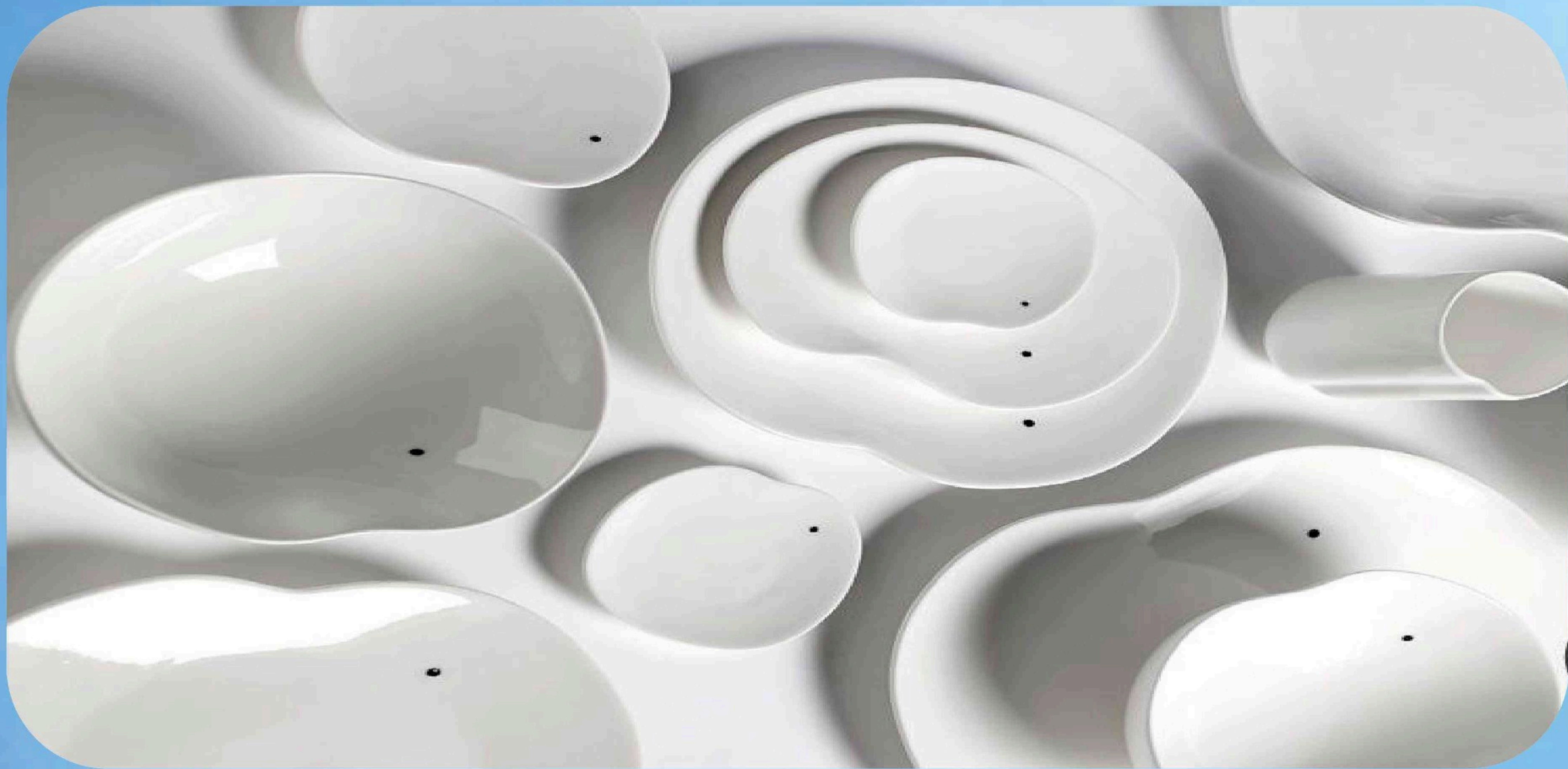
	Module description	
EN Inlet Module (standard) L=700/800/900/1100MM	Prewash module (optional) L=800MM	W Washing module (standard) L=800MM
R Rinsing module (standard) L=600MM	Drying module (optional) DL=800MM	EX export module (standard) L=900MM/1200MM

※ Optional TOP Clean control system



FT-4600-2PD

Flight Type Dishwasher



- Entrance module drawer type slag filter design.
- With anti-mixing device, the rinsing pipe is easy to use.



- Customized "8" font nozzle hole, concave anti-blocking design, forming a strong fan-shaped coverage, easier to wash the tableware oil residue, to ensure that there is no dead corner cleaning.

FT-5800-2P2D

Double cylinder double rinse drying long dragon dishwasher



- ※ Optional TOP Clean control system



FTG-4500

Long Queue Dishwasher With Bubble Tank



Entrance module drawer type slag filter design.



With anti-mixing device, the rinsing pipe is easy to use.

Dishwasher Conveyor Belt

Dishwasher Conveyor Belt
Technical advantages and features:

- Adjustable power, a multi-purpose machine to meet various cleaning requirements.
- One-click automatic working mode, no need to set during cleaning.
- The volume ratio of the equipment is small and can be placed arbitrarily.
- Materials such as waterproof switches, scratch-proof housings, and power regulation components are high-end materials and components.
- Stable function, good cleaning effect, more professional advantages in practical applications.
- The supporting rubber plate is made of food grade nylon material, which is resistant to friction and corrosion.
- Automatic cleaning chain-plate water tank, upper and lower two groups of spray.
- Length, height can be customized according to customer needs, can be made straight and turn type.

Main parameter	unit	CSDL-100	CSDJ-100
Whole length	MM	custom	custom
Specification and size	MM	L*520*850	L*500*850
Operation panel mode	-	key	key
Transfer power consumption	KW	0.4	0.4
Transfer rate	m/minutes	1.4-5	1.4-5
Input voltage	V/50HZ	380V	380V

CSDL-100



CSDJ-100

Food delivery cabinet

