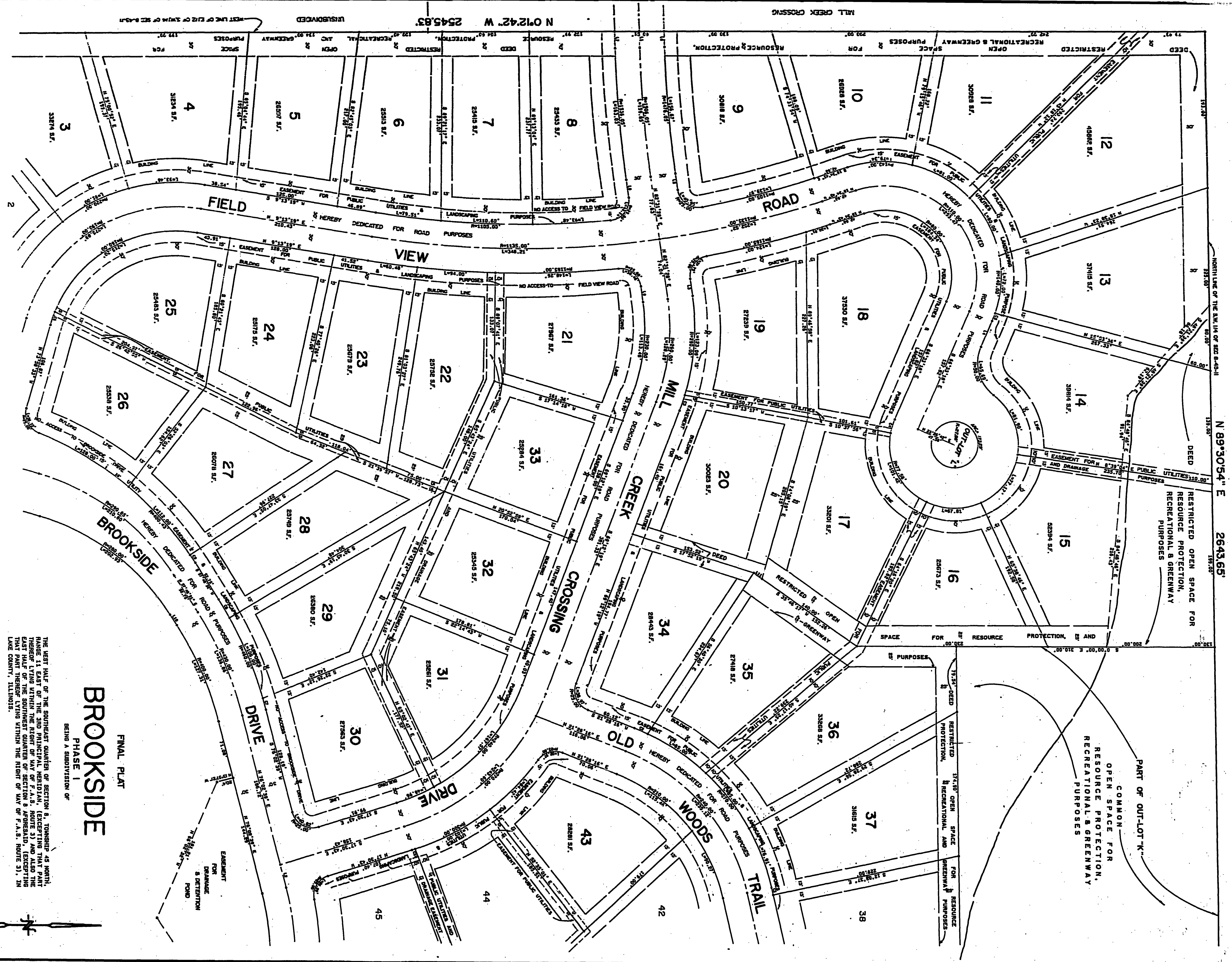


2735811

ORIGINALITY OF DOCUMENT QUESTIONABLE
Frank J. Pustina
REGISTERED SURVEYOR

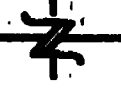
NOTE: Brookside Phase I
DOCUMENT NO. 2735811
WILL BE MICROFILMED TWICE WITH FIRST IMAGE
SHOWING COMPLETE PLAN AND THE SECOND IMAGE
WILL SHOW SUBDIVISION AREA AT A REDUCED
RATIO FOR LARGER PRINT OUT.
24131-222 24131-204



THE WEST HALF OF THE SOUTHWEST QUARTER OF SECTION 8, TOWNSHIP 45 NORTH, RANGE 11 EAST OF THE 5TH PRINCIPAL MERIDIAN, LENDING THE PART THEREOF TO THE FRONT CORNER OF SECTION 9, APPROXIMATELY (EXCEPTING THAT PART THEREOF LYING WITHIN THE RIGHT OF WAY OF R.A.S. ROUTE 31, IN LAKE COUNTY, ILLINOIS).

BROOKSIDE PHASE I FINAL PLAN

BEING A SUBDIVISION OF



FILE NO. 104-87

RE ALLEN and associates, INC.
prepared and approved

HUNT CLUB FARMS UNIT 2

N 89°30'54" E 2643.65'

2735811
LAKE COUNTY, ILLINOIS
1989 OCT 31 PM 2 58
Frank J. Pustina

Sheet 1 of 6

2735811

LIABILITY OF DOCUMENT QUESTIONABLE
Frank R. Pustina
SURVEYOR OF ILLINOIS

NOTE: Brookside Phase 1
DOCUMENT NO. 2735811
WILL BE MICROFILMED TWICE WITH FIRST IMAGE
SHARING COMPLETE PLAT AND THE SECOND IMAGE
WILL SHOW SUBDIVISION AREA AT A REDUCED
RATIO FOR LARGER PRINT OUT.
24131-224 24131-204



BROOKSIDE PHASE 1 FINAL PLAT

THE WEST HALF OF THE SOUTHEAST QUARTER OF SECTION 8, TOWNSHIP 43 NORTH,
RANGE 11 EAST OF THE 3RD PRINCIPAL MERIDIAN, (EXCEPTING THAT PART
THEREOF LYING WITHIN THE RIGHT OF WAY OF F.A.S. ROUTE 3) AND ALSO THE
EAST HALF OF THE SOUTHWEST QUARTER OF SECTION 8, TOWNSHIP 43 NORTH,
RANGE 11 EAST OF THE 3RD PRINCIPAL MERIDIAN, (EXCEPTING
THAT PART THEREOF LYING WITHIN THE RIGHT OF WAY OF F.A.S. ROUTE 3), IN
LAKE COUNTY, ILLINOIS.

Scale: 0 25 50 75 100 150 200 300 feet

HUNT CLUB FARMS UNIT 2

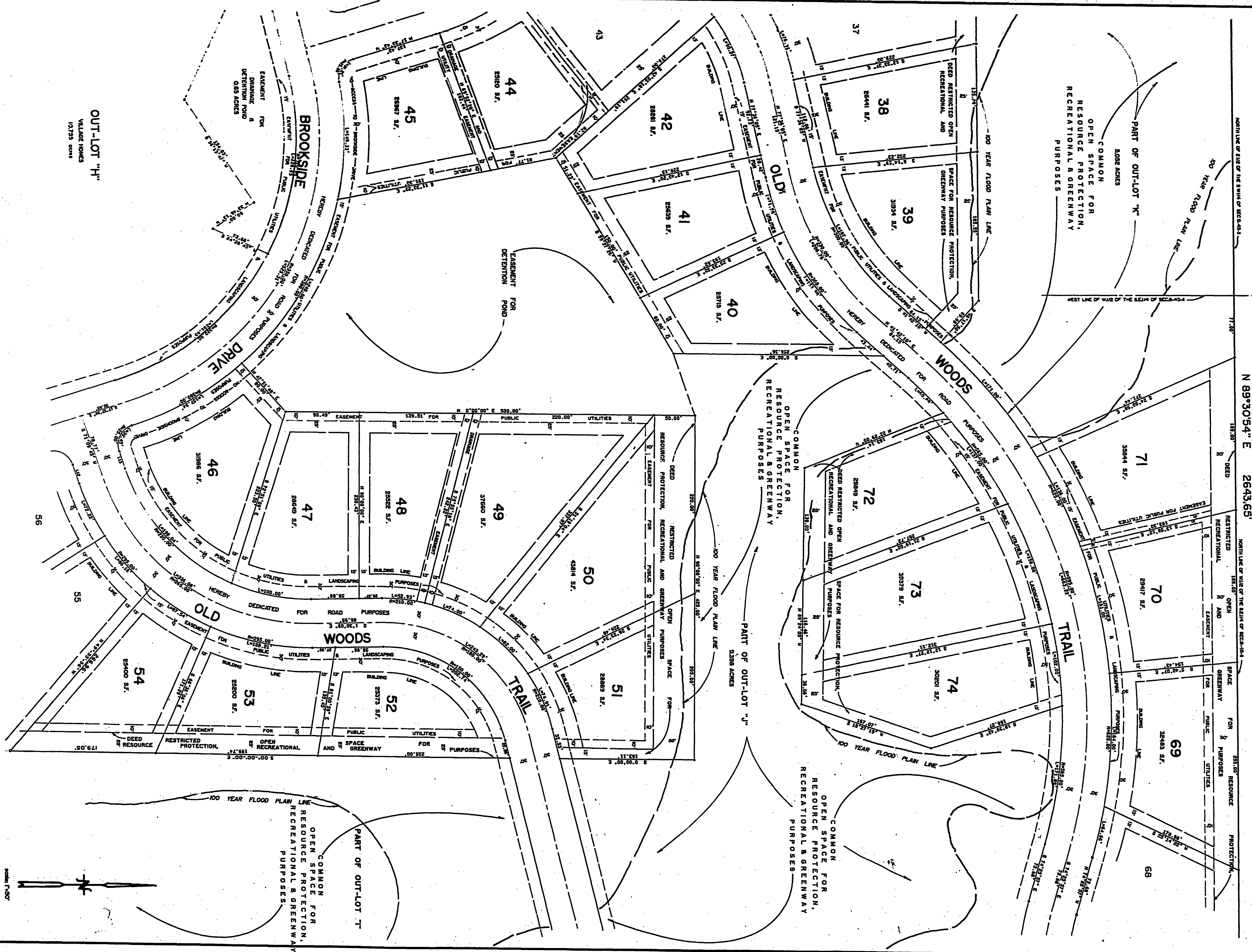
2735811
RECORDED
LAKE COUNTY, ILLINOIS
1988 OCT 31 PM 2:58
Frank R. Pustina

Sheet 1 of 6

2735811

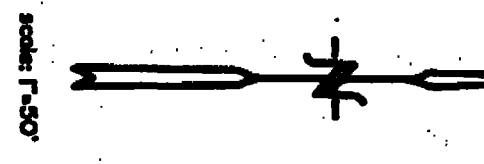
LEGIBILITY OF DOCUMENT QUESTIONABLE
Frank R. Allen
REGISTERED SURVEYOR

NOTE: *See Note page 1*
THIS PLAT WILL BE RECORDED TWICE WITH THE FIRST IMAGE SHOWING COMPLETE PLAT AND THE SECOND IMAGE WILL SHOW SUBDIVISION AREA AT A REDUCED RATIO FOR LARGER PRINT CUT. *6/10/04*
27358-204 30134-204



FILE NO. 104-97

RE ALLEN and associates, INC.
REGISTERED SURVEYOR



N 89°30'54" E 2643.65'

NORTH LINE OF WIRE OF THE SE1/4 OF SEC. 34

N 89°30'54" E 2643.65'

NORTH LINE OF WIRE OF THE SE1/4 OF SEC. 34

UNSUBDIVIDED

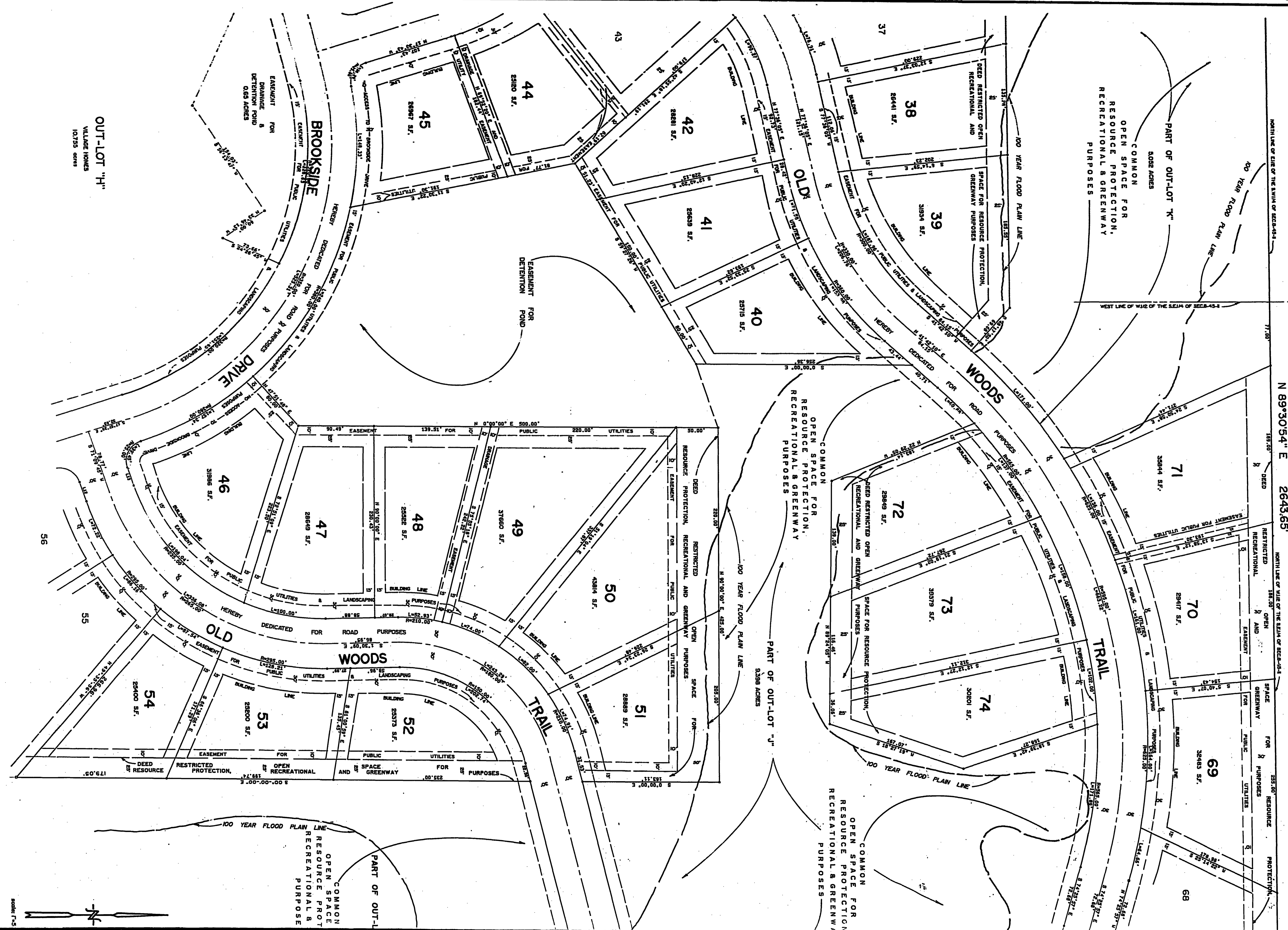
Sheet 2 of 6

2735911

2735811

LEGIBILITY OF DOCUMENT QUESTIONABLE
Frank J. Jureta
REGISTRAR OF DEEDS

NOTE: Brookside Phase 1 2/2/2
DOCUMENT NO. 2735811
WILL BE MICROFILMED TWICE WITH FIRST IMAGE
SHOWING COMPLETE PLAT AND THE SECOND IMAGE
WILL SHOW SUBDIVISION AREA AT A REDUCED
RATIO FOR LARGER PRINT OUT. 6/24/24
27358-224 30124-20A



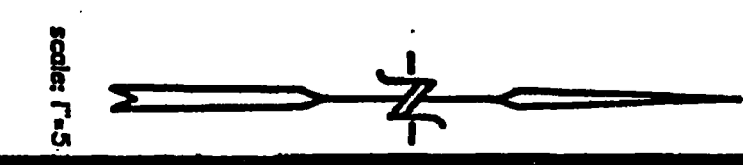
HUNT CLUB FARMS UNIT 2

N 89°30'54" E 2643.65'

UNSUBDIVIDED

2735811

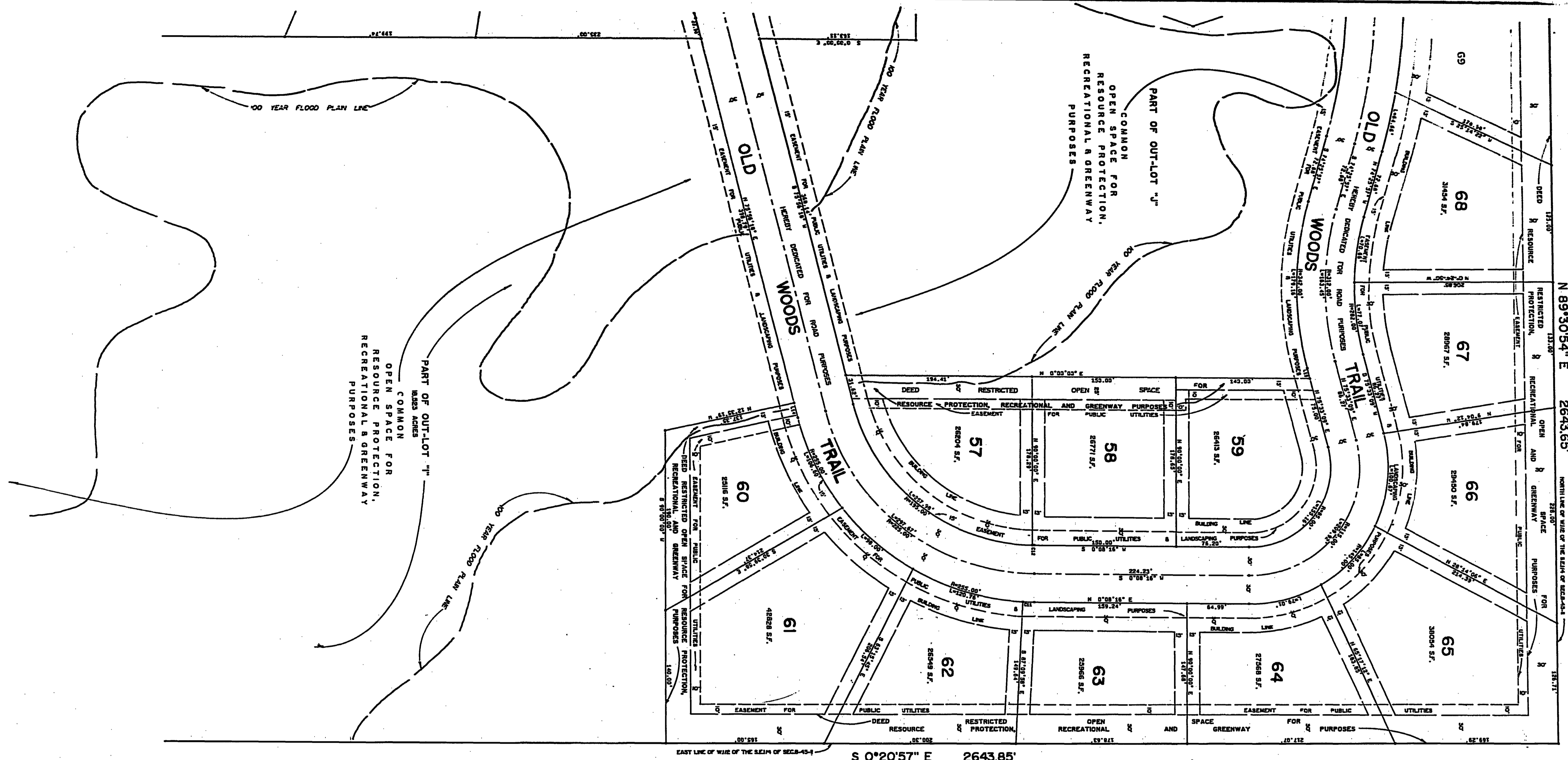
Sheet 2



2735811

LIABILITY OF DOCUMENT QUESTIONABLE
Frank DiPietro
REGISTERED SURVEYOR

NOTE: See Sub Phase 1 Map 3
RECORD NO. 2735811
THIS IS MICROFILMED WITH FIRST IMAGE
BEING COMPLETE PLAT AND THE SECOND IMAGE
BEING A COPY OF THE DIVISION AREA AT A REDUCED
RATIO FOR LARGER PRINT CUT.
2735811-225
DATE 10/17/14



UNSUBDIVIDED
N 89°30'54" E 2643.65'
NORTHLINE OF WIDE OF THE STRIP OF SEC-43-1

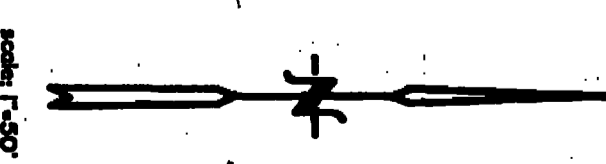
S 0°20'57" E 2643.85'

UNSUBDIVIDED

THE FOLLOWING LOT DIMENSIONS SHALL APPLY:

LOT	AREA (SQ. FT.)	PERIMETER (FEET)
57	2820	117.00
58	2871	117.00
59	2843	117.00
60	2818	117.00
61	4828	138.00
62	2846	117.00
63	2866	117.00
64	2768	117.00
65	3804	138.00
66	2840	117.00
67	2897	117.00
68	3104	122.00
69	3104	122.00

LINE	BEARING	DISTANCE
1	N 89°30'54" E	2643.65
2	S 0°20'57" E	2643.85
3	N 89°30'54" E	2643.65
4	S 0°20'57" E	2643.85
5	N 89°30'54" E	2643.65
6	S 0°20'57" E	2643.85
7	N 89°30'54" E	2643.65
8	S 0°20'57" E	2643.85
9	N 89°30'54" E	2643.65
10	S 0°20'57" E	2643.85
11	N 89°30'54" E	2643.65
12	S 0°20'57" E	2643.85
13	N 89°30'54" E	2643.65
14	S 0°20'57" E	2643.85
15	N 89°30'54" E	2643.65
16	S 0°20'57" E	2643.85
17	N 89°30'54" E	2643.65
18	S 0°20'57" E	2643.85
19	N 89°30'54" E	2643.65
20	S 0°20'57" E	2643.85
21	N 89°30'54" E	2643.65
22	S 0°20'57" E	2643.85
23	N 89°30'54" E	2643.65
24	S 0°20'57" E	2643.85
25	N 89°30'54" E	2643.65
26	S 0°20'57" E	2643.85
27	N 89°30'54" E	2643.65
28	S 0°20'57" E	2643.85
29	N 89°30'54" E	2643.65
30	S 0°20'57" E	2643.85
31	N 89°30'54" E	2643.65
32	S 0°20'57" E	2643.85
33	N 89°30'54" E	2643.65
34	S 0°20'57" E	2643.85
35	N 89°30'54" E	2643.65
36	S 0°20'57" E	2643.85
37	N 89°30'54" E	2643.65
38	S 0°20'57" E	2643.85
39	N 89°30'54" E	2643.65
40	S 0°20'57" E	2643.85
41	N 89°30'54" E	2643.65
42	S 0°20'57" E	2643.85
43	N 89°30'54" E	2643.65
44	S 0°20'57" E	2643.85
45	N 89°30'54" E	2643.65
46	S 0°20'57" E	2643.85
47	N 89°30'54" E	2643.65
48	S 0°20'57" E	2643.85
49	N 89°30'54" E	2643.65
50	S 0°20'57" E	2643.85
51	N 89°30'54" E	2643.65
52	S 0°20'57" E	2643.85
53	N 89°30'54" E	2643.65
54	S 0°20'57" E	2643.85
55	N 89°30'54" E	2643.65
56	S 0°20'57" E	2643.85
57	N 89°30'54" E	2643.65
58	S 0°20'57" E	2643.85
59	N 89°30'54" E	2643.65
60	S 0°20'57" E	2643.85
61	N 89°30'54" E	2643.65
62	S 0°20'57" E	2643.85
63	N 89°30'54" E	2643.65
64	S 0°20'57" E	2643.85
65	N 89°30'54" E	2643.65
66	S 0°20'57" E	2643.85
67	N 89°30'54" E	2643.65
68	S 0°20'57" E	2643.85
69	N 89°30'54" E	2643.65
70	S 0°20'57" E	2643.85



- MIN. LOT AREA: 10,000 SQ. FT.
- MIN. LOT AREA: 4000 SQ. FT.
- MIN. DISTANCE FROM EXISTING STRUCTURES, OTHER EASEMENTS OR STREETS: 40 FEET
- MIN. LOT WIDTH AT FRONT SETBACK LINE: 30 FEET
- MIN. FRONT YARD SETBACK: 30 FEET
- MIN. REAR YARD SETBACK: 20 FEET
- MIN. SIDE YARD SETBACK: 7.5 FEET
- MIN. SIDE YARD SETBACK ADJACENT TO A STREET: 30 FEET
- MIN. SETBACK AT THE PERIMETER OF THE SHORTEST DEVELOPMENT: 30 FEET
- MAX. LOT COVERAGE: 30%
- MAX. HEIGHT OF PRINCIPAL BUILDING: 35 FEET / 2.5 STORIES
- MAX. HEIGHT OF ACCESSORY BUILDING: 20 FEET / 1 STORY

NOTE

BEFORE THE ISSUANCE OF ANY OCCUPANCY PERMIT FOR ANY BUILDING WITHIN THIS DEVELOPMENT, SAID STRUCTURE SHALL BE CONNECTED TO PUBLIC SANITARY CENTER.

FILE NO. 10452

RE. ALLEN and associates, INC.
registered land surveyors

2735811

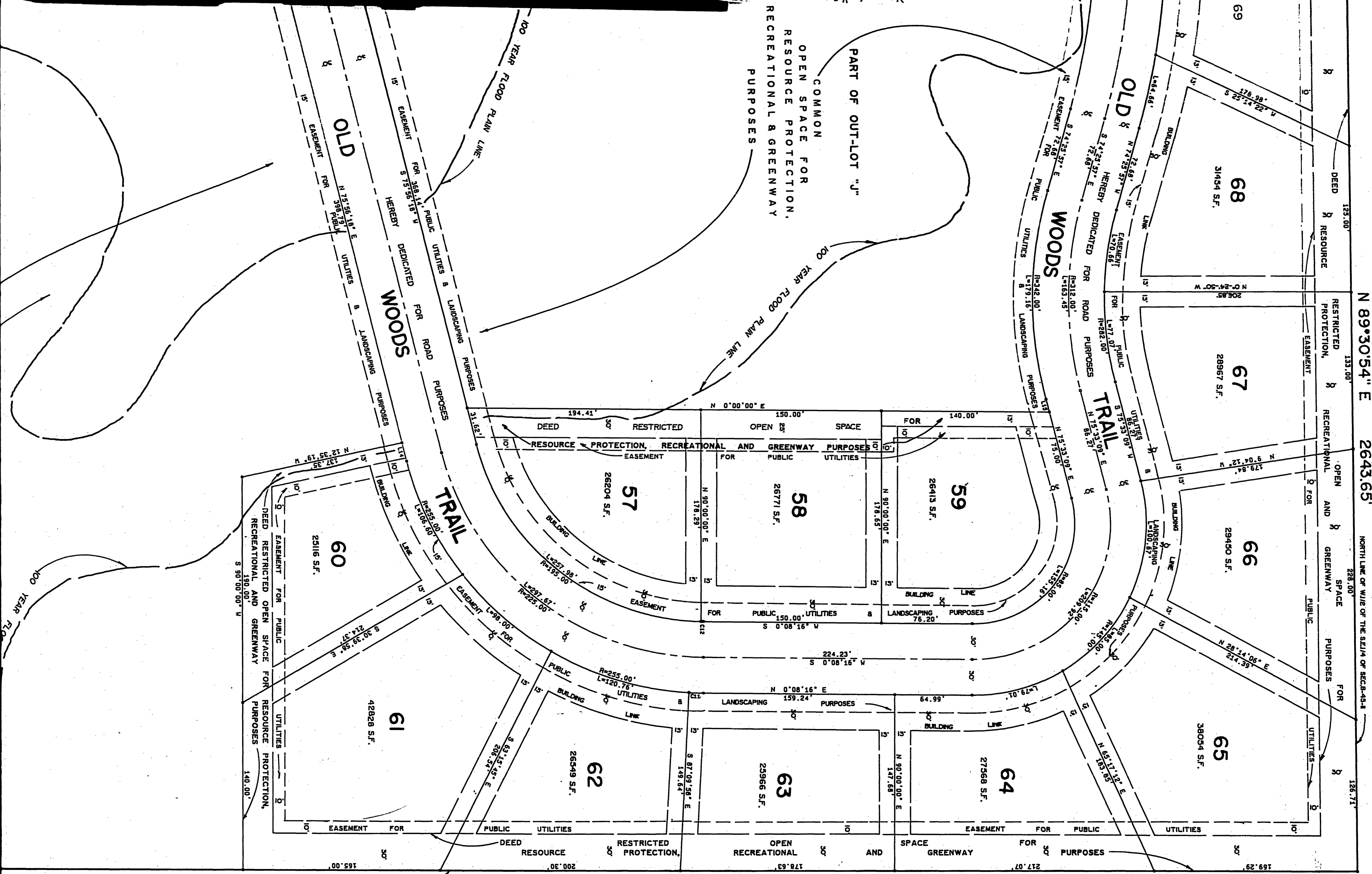
Sheet 3 of 6

2735811

LEGIBILITY OF DOCUMENT QUESTIONABLE

Frank J. Mustra
REGISTRAR OF DEEDS

NOTE: *Bankside Phase 1 page 3*
DOCUMENT NO. *2735811*
WILL BE MICROFILMED TWICE WITH FIRST IMAGE
SHOWING COMPLETE PLAT AND THE SECOND IMAGE
WILL SHOW SUBDIVISION AREA AT A REDUCED
RATIO FOR LARGER PRINT OUT.
2-236-225 *Blump*
20A 17-14A



UNSUBDIVIDED

EAST LINE OF W1/2 OF THE S.E.1/4 OF SEC.8-45-1
S 0°20'57" E 2643.85'

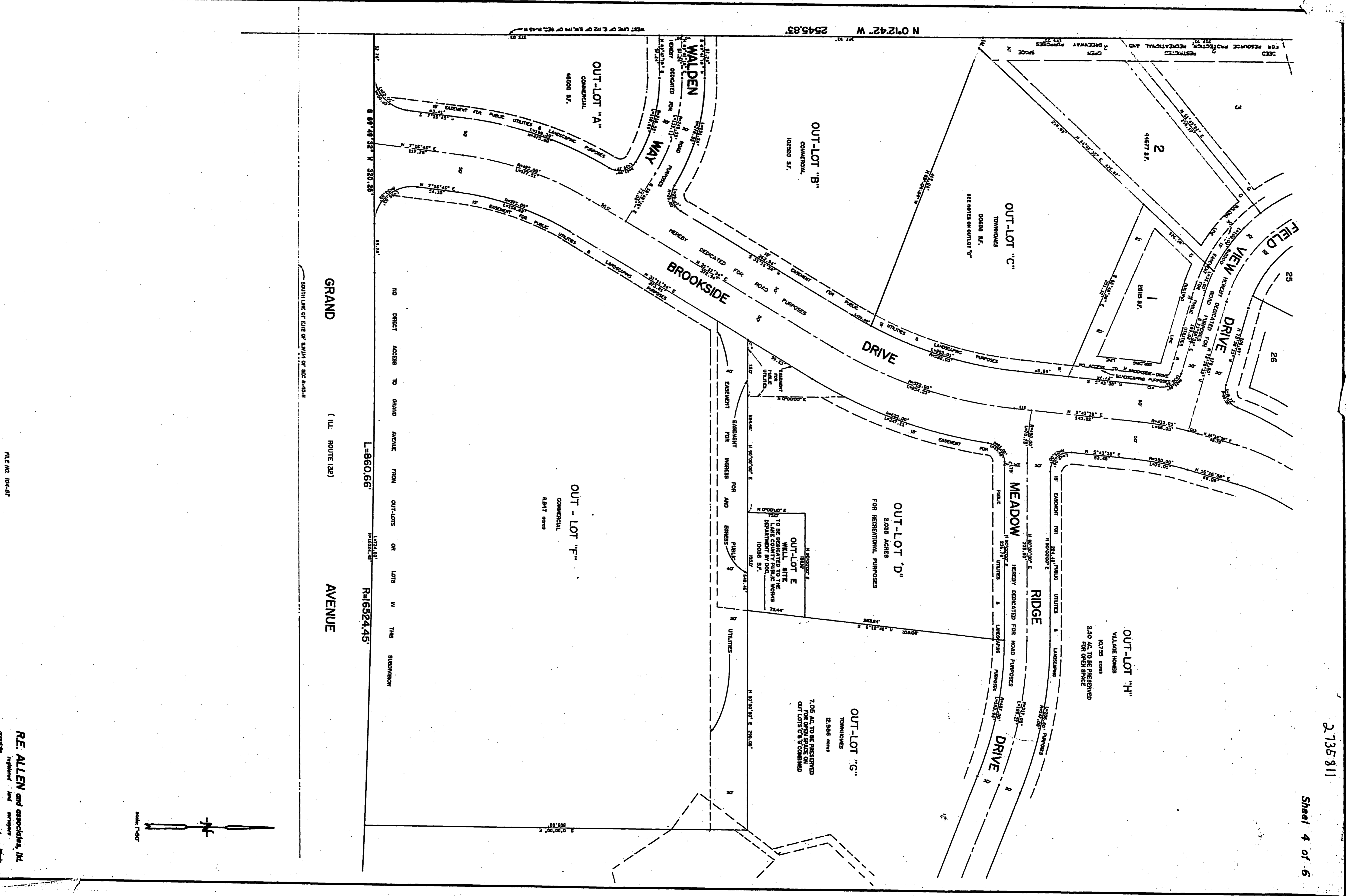
UNSUBDIVIDED

2735811

LEGIBILITY OF DOCUMENT QUESTIONABLE

Frank J. ...
REGISTERED SURVEYOR

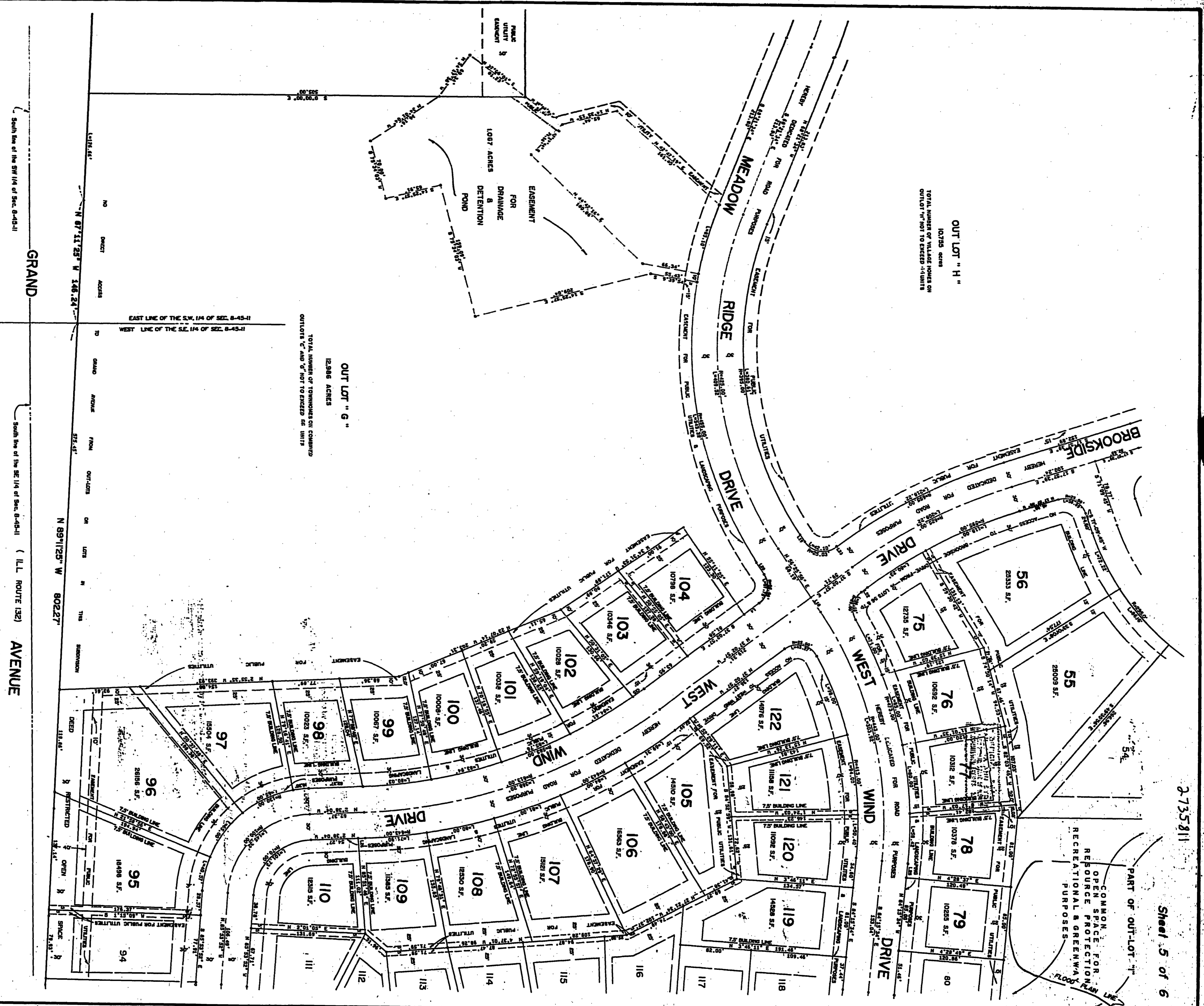
NOTE: *Brookside Phase 1*
DOCUMENT NO. *2735811*
WILL BE RECORDED TWICE WITH FIRST SPACE
SECTION COMPLETE PLAT AND THE SECOND SPACE
WILL SHOW SUBDIVISION AREA AT A REDUCED
RATIO FOR LARGER PRINT ETC.
24136-225 *25122-14*



2735811

LEGIBILITY OF DOCUMENT QUESTIONABLE
Frank R. ...
MAY 19 1971

DATE: Brookside Road
DOCUMENT NO. 2735811
WILL BE RECORDED WITH FIRST IMAGE
SHOWING COMPLETE PLAT AND THE SECOND IMAGE
WILL SHOW SUBDIVISION AREA AT A REDUCED
RATIO FOR LARGER PRINT OUT.
27436-225 Group 27414



OUT LOT "H"
10,735 ACRES
TOTAL NUMBER OF TOWNSHIPS OR
COUNTY TO EXCEED 14,100

OUT LOT "G"
12,266 ACRES
TOTAL NUMBER OF TOWNSHIPS OR
COUNTY TO EXCEED 14,100

South line of the SW 1/4 of Sec. 8-45-11
GRAND AVENUE
N 87° 11' 23" W 148.24'
N 89° 12' 25" W 802.27'
South line of the SE 1/4 of Sec. 8-45-11
AVENUE
(I.L. ROUTE 132)

PART OF OUT LOT "H"
COMMON OPEN SPACE FOR
RESOURCE PROTECTION
RECREATIONAL & GREENWAY
PURPOSES

2735811
Sheet 5 of 6

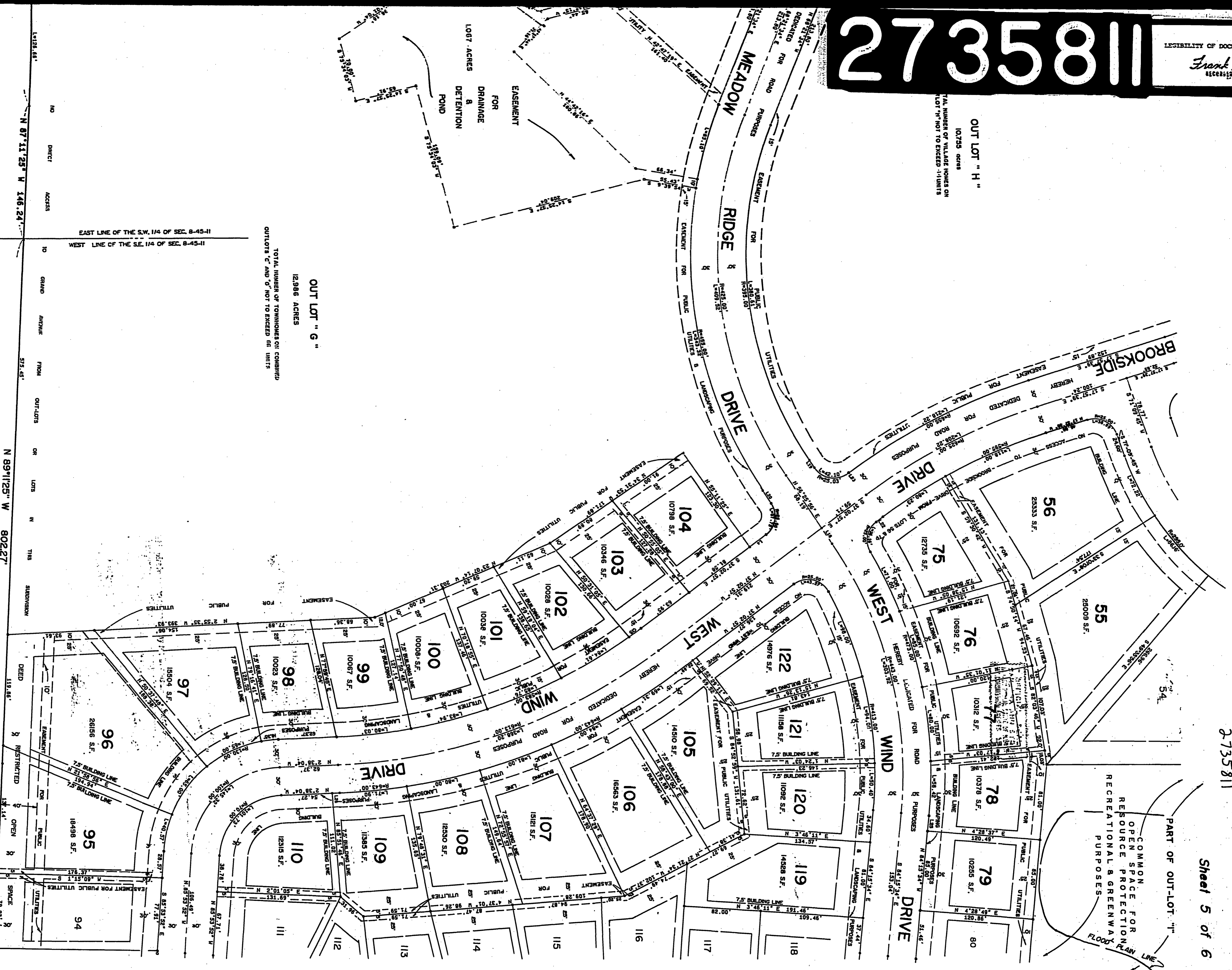
FILE NO. 124-27

RE. ALLEN and associates, Inc.
engineers and architects
Chicago

2735811

OUT LOT "H"
10.733 acres
TOTAL NUMBER OF VILLAGE HOMES ON LOT "H" NOT TO EXCEED 14 UNITS

OUT LOT "G"
12.986 ACRES
TOTAL NUMBER OF TOWNHOMES OR CONDOS OUTLOTS "C" AND "D" NOT TO EXCEED 60 UNITS



NO	DIRECT	ACCESS

EAST LINE OF THE S.W. 1/4 OF SEC. 8-45-11
WEST LINE OF THE S.E. 1/4 OF SEC. 8-45-11

GRAND AVENUE FROM OUT-LOTS OR LOTS IN THIS SUBDIVISION

N 89°11'25" W 802.27'

N 87°11'25" W 146.24'

GRAND AVENUE

AVENUE

South line of the SW 1/4 of Sec. 8-45-11

South line of the SE 1/4 of Sec. 8-45-11

(ILL. ROUTE 132)

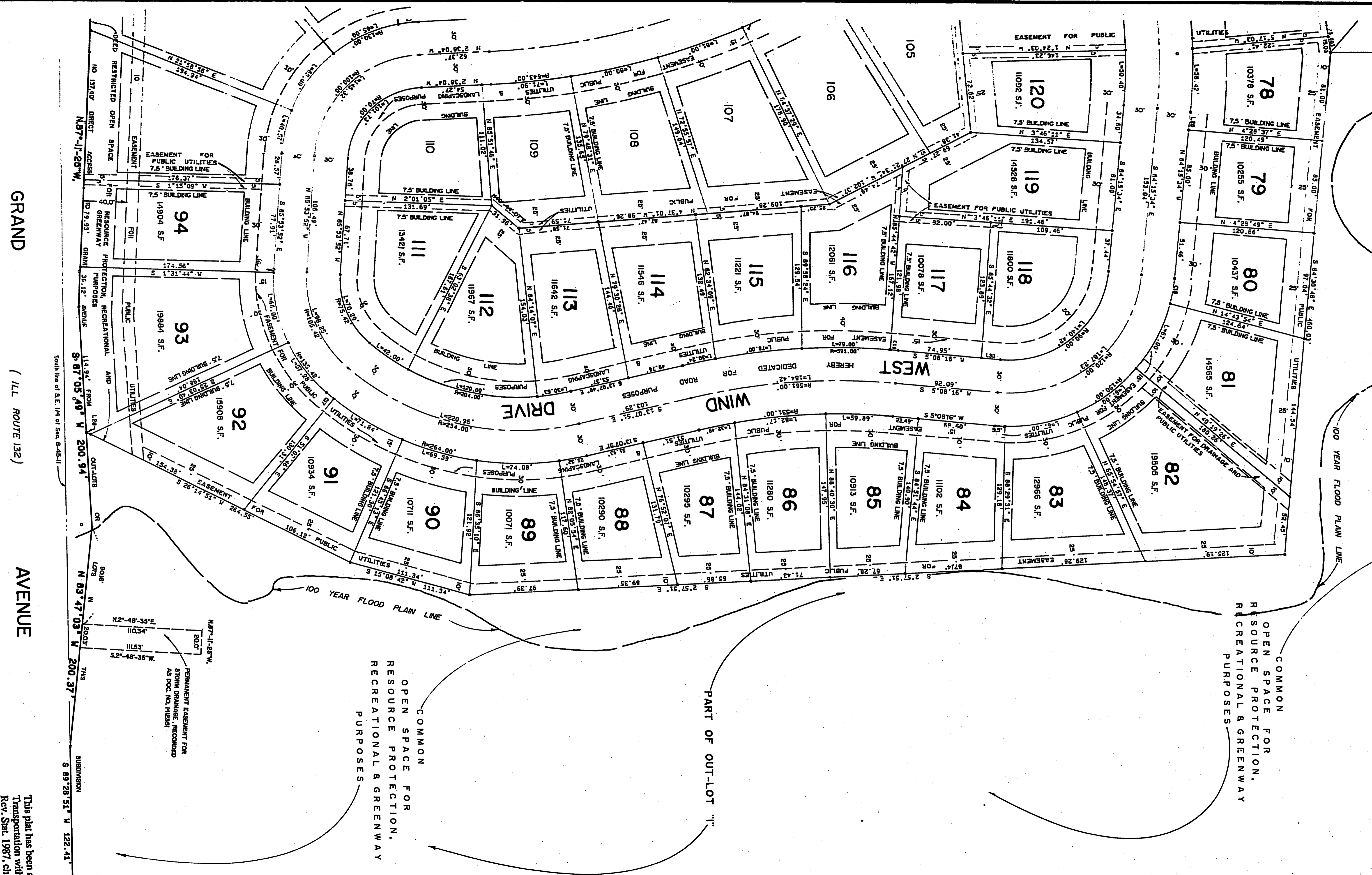
2735811

Sheet 5 of 6

2735811

LEGIBILITY OF DOCUMENT QUESTIONABLE
Frank J. Huistra
 RECORDER OF DEEDS

NOTE: Brookside Pkgs. 1 page 6
 DOCUMENT NO. 2735811
 WILL BE MICROFILMED TWICE WITH FIRST IMAGE
 SHOWING COMPLETE PLAT AND THE SECOND IMAGE
 WILL SHOW SUBDIVISION AREA AT A REDUCED
 RATIO FOR LARGER PRINT OUT. Blomup
 27136-225 241 17-157



This plat has been approved
 Transportation with respect to
 Rev. Stat. 1987, ch. 109, part
 Permit for access is required
 than that meets requirements

S 0°20'57" E 2643.85'

East line of the W 1/2 of the SE 1/4 of Sec. 8-45-11