



COM3010

BBUGEZ32 Programming Utility

Installation Procedure

Required Equipment:

PC Computer
Windows XP or earlier
4 MB of Hard Drive Space.

Procedure

1. Extract the "BBUGEZ32_COM3010.ZIP" file to your computers hard drive.
2. Go to the location you extracted the ZIP file and run "setup.exe".
3. Follow the instructions in the Set-up Wizard. It is recommended that you use the default directory in the wizard.
4. Once set-up is complete go to START/PROGRAMS/RAMSEY/BBUGEZ32 and run the program. You should see the following on the monitor.

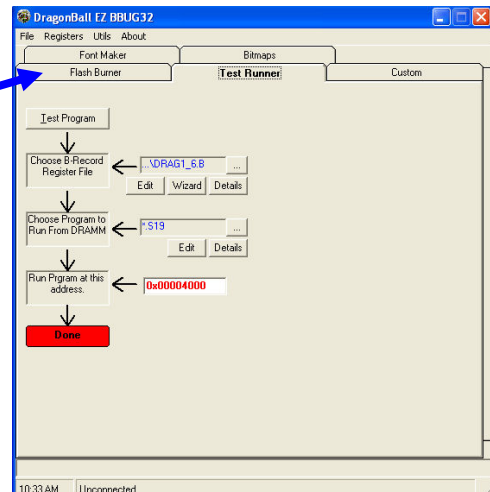
5. By clicking on the picture above the wait time for the next screen is significantly reduced.

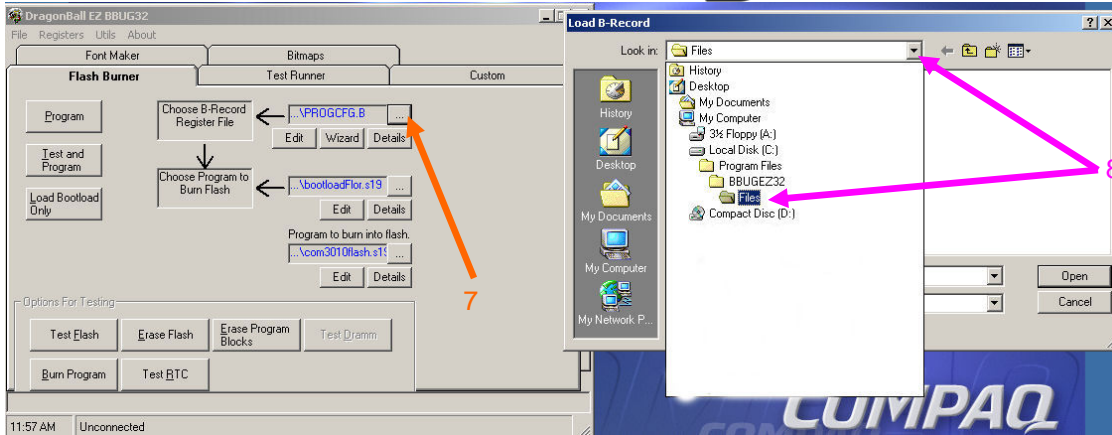
5



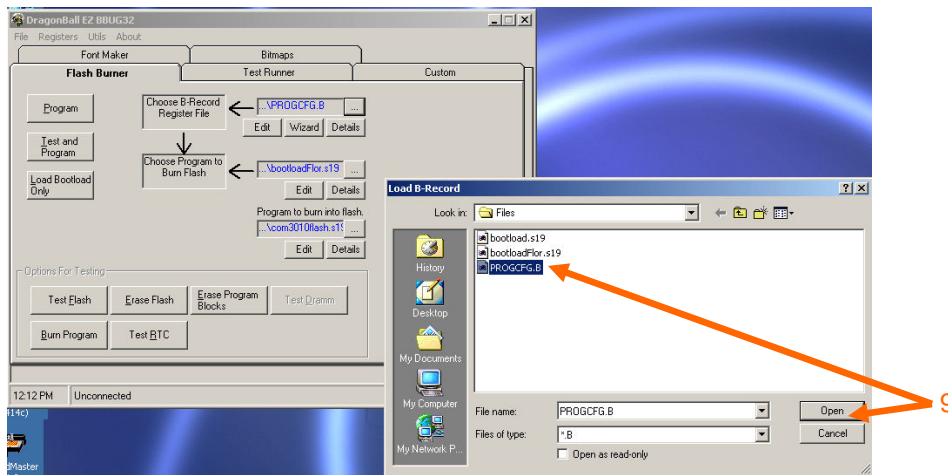
6. Everything we will do will be with the Flash Burner so click on that tab.

6

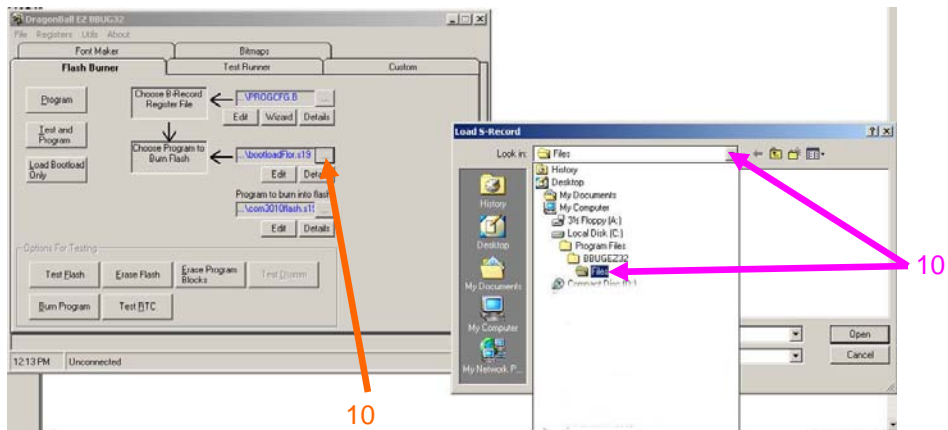




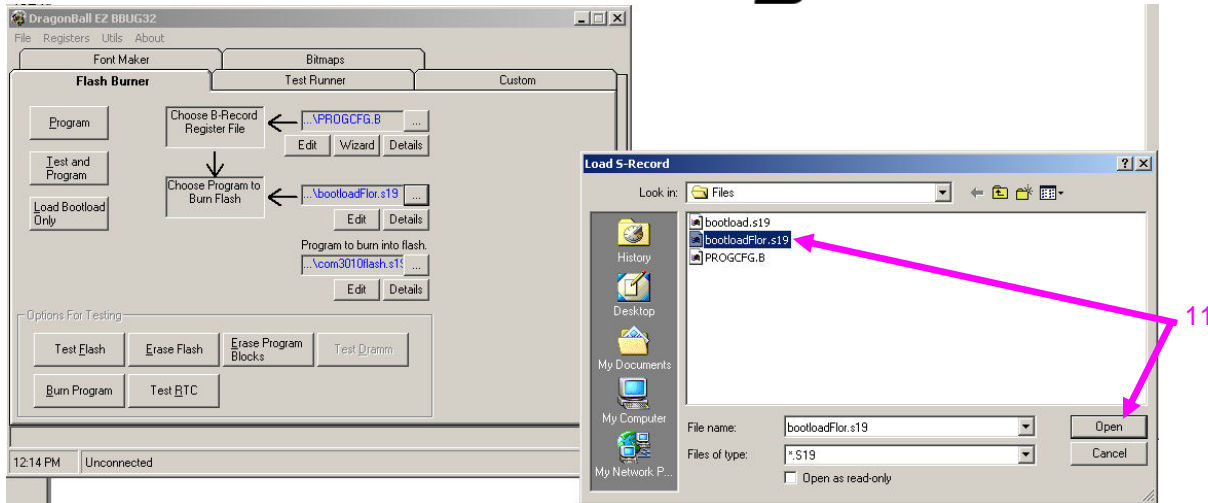
7. Click on the Choose B-Record Register File “...” button as shown above.
8. Click on the drop down menu and select Local Disc C:/Program Files/BBUGEZ32/Files”.



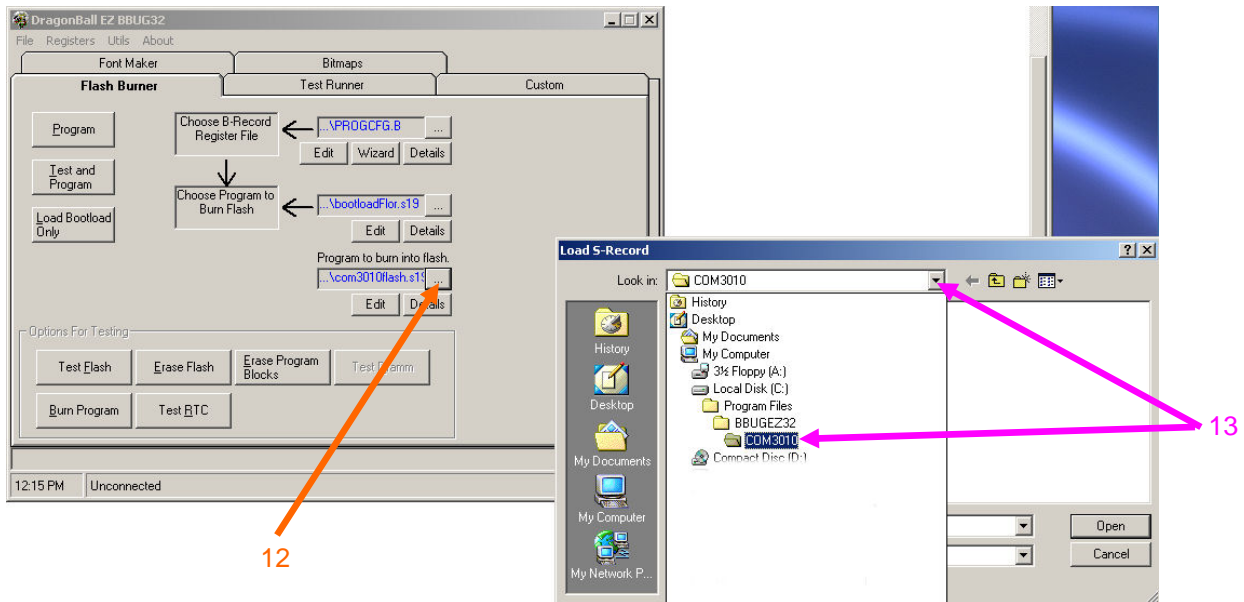
9. Under the “Files” folder select “PROGCFG.B” and click on “Open”.



10. Click on the Choose program to Burn Flash “...” button as shown above. Click on the drop down menu and select Local Disc C:/Program Files/BBUGEZ32/Files”.

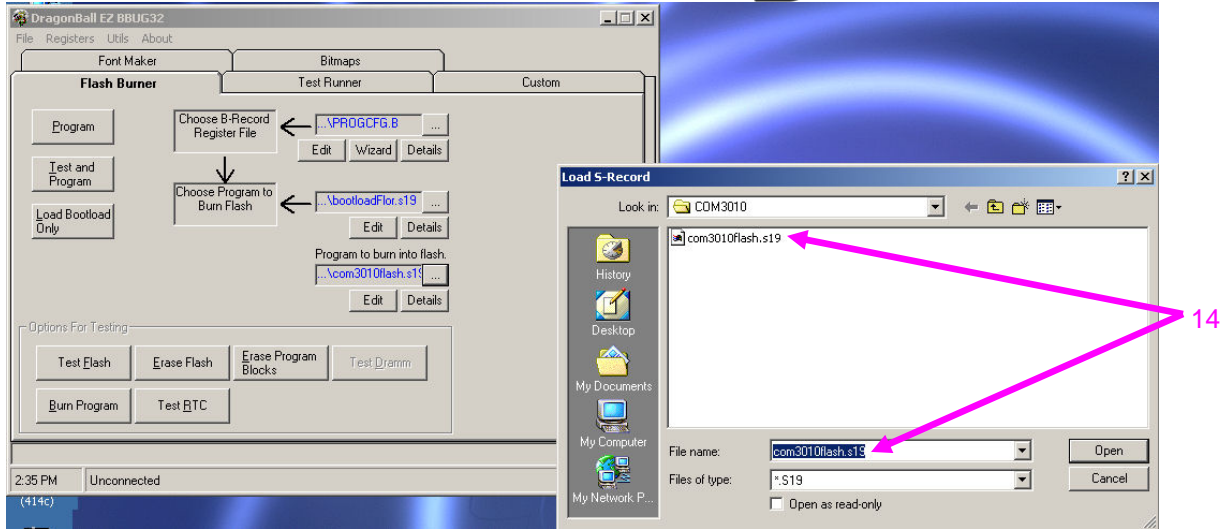


11. Select “bootloadFlor.S19” and click “Open”.

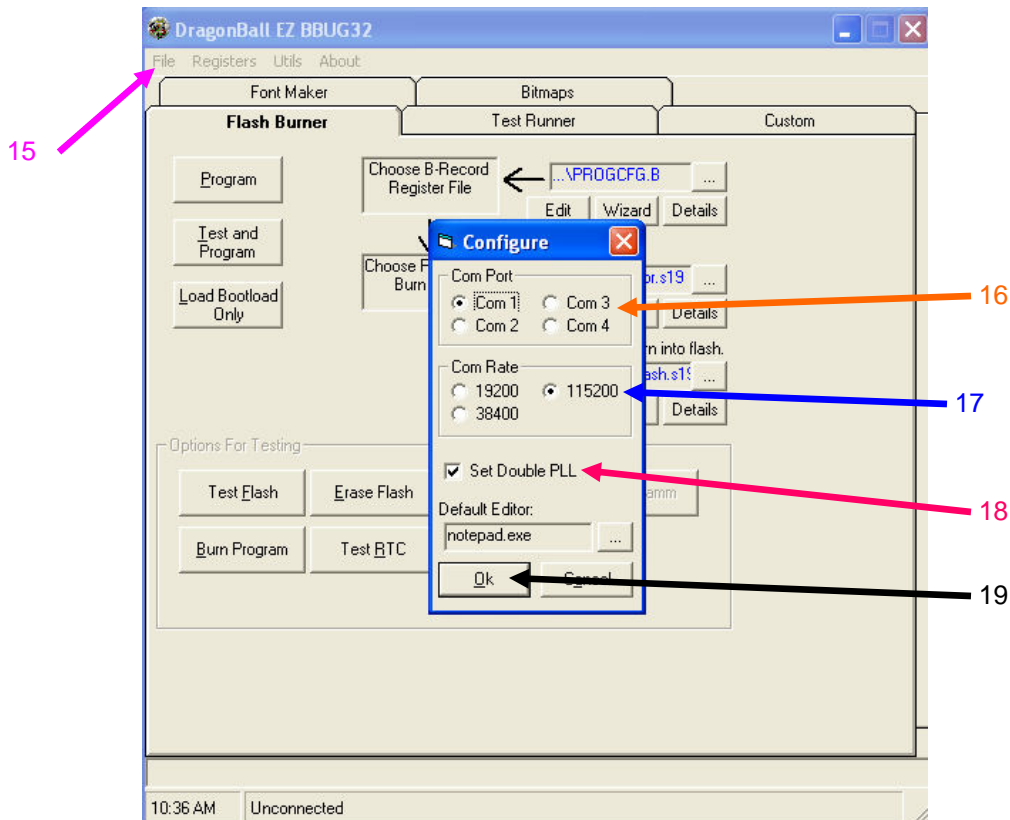


12. Click on the Program to burn into flash. “...” button as shown above.

13. Click on the drop down menu and select Local Disc C:/Program Files/BBUGEZ32/Files”.



14. Select “com3101flash.s19” and click “Open”.



- 15. Select Configure under the File Menu.
- 16. Select the appropriate Com Port for your computer.
- 17. A Com Rate of 115200 should be attainable with the COM3010.
- 18. Make sure the “Set Double PLL” is checked.
- 19. Click Ok
- 20. The programmer is now set up to program COM3010's.