



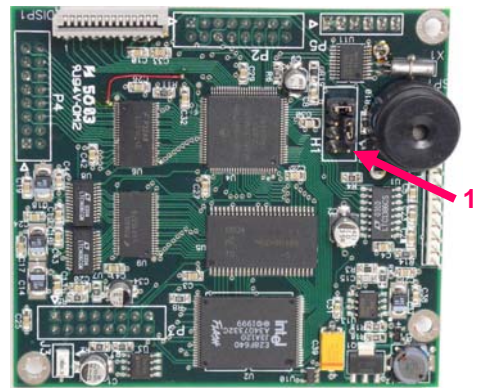
COM3010 BBUGEZ32 Programming Utility Programming Procedure

Required Equipment:

- PC With BBUGEZ32 Programming Utility
- COM3010 to program
- serial cable with a 9-pin male connector on one end, and an end compatible with your computer's serial port.

Procedure

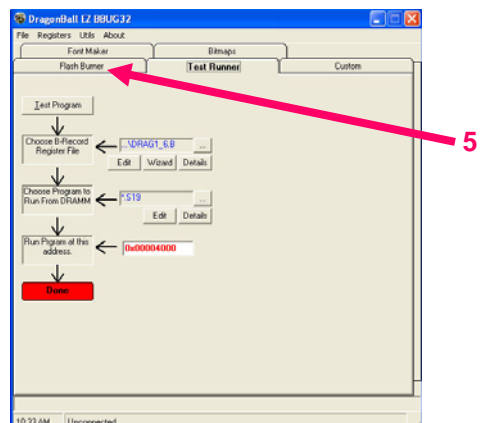
1. With the COM3010 powered down, configure the Dragonball module for programming by moving the Jumper on H1 pins 3 & 5 to pins 1 & 3.
Note: Pin 1 is annotated by a triangle. All four pins on the side with the triangle are odd numbered pins.
2. Connect the Serial cable to the computer and the DB9 connector on the back of the COM3010.
3. Power-up the COM3010.

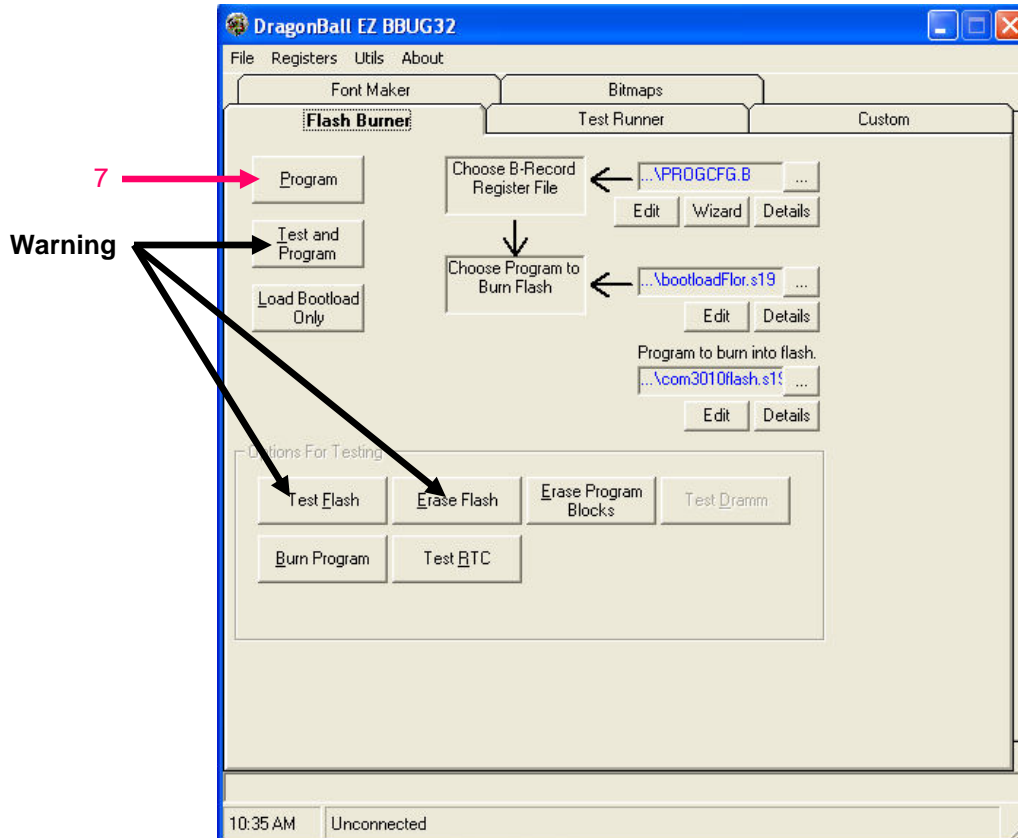


4. Load the BBUGEZ32 program into the computer.
5. By clicking on the picture the wait time for the next screen is significantly reduced.



6. Everything we will do will be with the Flash Burner so click on that tab.





WARNING: All calibration values will be erased if the “Test and Program”, “Test Flash”, or “Erase Flash” buttons are used!

7. To program the COM3010 without erasing the stored calibration values click on the “Program” button.
8. After Programming is complete. Power down the COM3010.
9. Remove Serial cable from the COM3010.
10. Move the Jumper on H1 pins 1&3 back to Pins 3&5.
11. The COM3010 is now reprogrammed.

