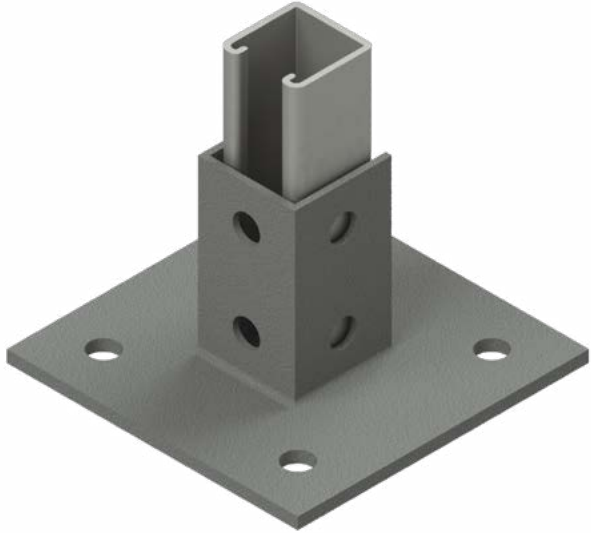


Strut Post Base



Strut Post Base

PB-158 * *

** Select appropriate suffix for
Material Finishes: PB-158-ZP

ZP: Zinc-Plated

HDG: Hot-Dipped Galvanized

SS: 304SS

Easy Installation

Fits all 1 5/8" Channel

Cushion Clamp

Cushion Clamps are used to secure tubing or pipe to strut. This provides vibration isolation or protection from dissimilar metals. Cushion Clamps come in both a Zinc-plated and 316SS finish. Complete assembly comes with cushion insert, outer metal clamp and hardware.

Steel Part No.	SS Part No.	Tube Size
Cushion Clamps		
TLC-025-W3-K	TLC-025-W4-K	1/4"
TLC-037-W3-K	TLC-037-W4-K	3/8"
TLC-050-W3-K	TLC-050-W4-K	1/2"
TLC-075-W3-K	TLC-075-W4-K	3/4"
TLC-100-W3-K	TLC-100-W4-K	1"

Pipe sizes available upon request.



*Standard stock sizes and finishes listed.
Contact TechLine Mfg. for additional tubing and
pipe diameter sizes.