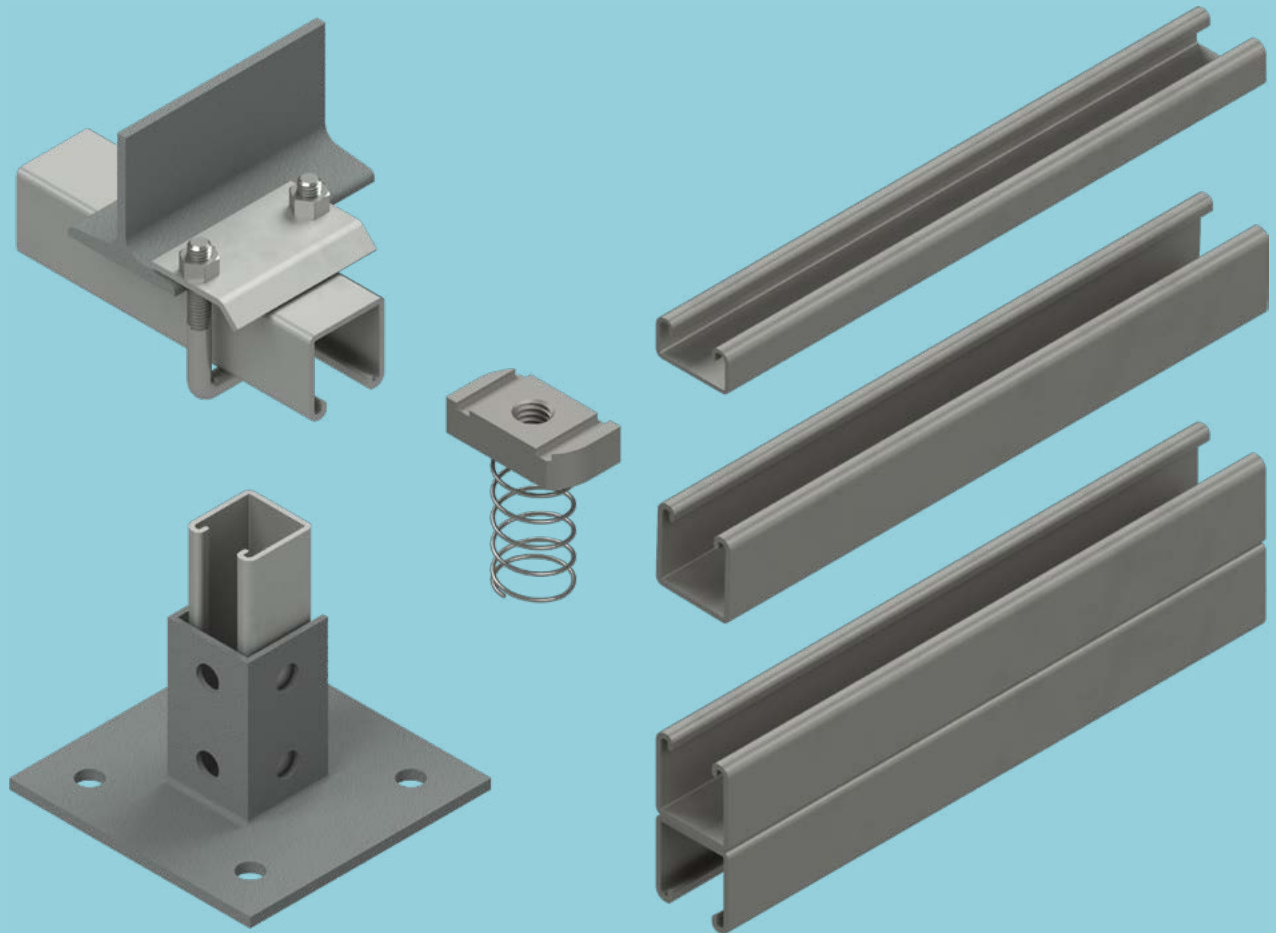


TechLine[®]
MFG.

Strut Products



Single Strut



1000

Standard Strut			
	W —	D	L /
1000 * *	1 5/8"	1 5/8"	10'

** Select appropriate suffix for Material Finishes: 1000-AL-S

AL: Aluminum

HDG: Hot-Dipped Galvanized

PG: PreGalvanized

4S: 304SS

6S: 316SS

S: Place an "S": after product number for a slotted strut.

All material offered is 12 Gauge thickness.



I1315

Shallow Strut			
	W —	D	L /
I1315 * *	1 5/8"	13/16"	10'

** Select appropriate suffix for Material Finishes: I1315-AL-S

AL: Aluminum

HDG: Hot-Dipped Galvanized

PG: PreGalvanized

4S: 304SS

6S: 316SS

S: Place an "S" after product number for a slotted strut.

All material offered is 12 Gauge thickness.

Double Strut



1001



1002

Double Strut			
1001	<div>W —</div>	<div>D </div>	<div>L /</div>
1001 * *	1 5/8"	1 5/8"	10'

** Select appropriate suffix for Material Finishes: 1001-AL- S

AL: Aluminum
HDG: Hot-Dipped Galvanized
PG: PreGalvanized
4S: 304SS
6S: 316SS
S: Place an "S": after product number for a slotted strut.

All material offered is 12 Gauge thickness.

Double Strut			
1002	<div>W —</div>	<div>D </div>	<div>L /</div>
1002 * *	1 5/8"	13/16"	10'

** Select appropriate suffix for Material Finishes: 1002-AL- S

AL: Aluminum
HDG: Hot-Dipped Galvanized
PG: PreGalvanized
4S: 304SS
6S: 316SS
S: Place an "S": after product number for a slotted strut.

All material offered is 12 Gauge thickness.