



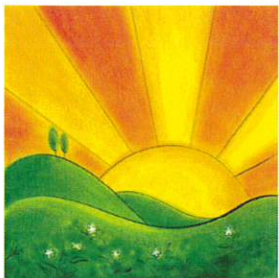
New Hope Notes

The Monthly Newsletter for New Hope Presbyterian Church

12727 Lincoln Way North Huntingdon, PA 15642

Phone: 724-863-7702 FAX: 724-863-7730

APRIL 2021



*"Praise be to the God and Father of our Lord Jesus Christ!
In his **great** mercy he has given us new birth into a living hope
through the resurrection of Jesus Christ from the dead."
1 Peter 1:3*

Remember the Resurrection!

In history, there have been a lot of "memories." For example, the rallying cry of the Texans – "Remember the Alamo!" Or, "Remember the Maine!" which served to rally troops during the Spanish American War, after the sinking of the USS Maine in the Havana harbor. Or, "Remember Pearl Harbor!" at each battle during WWII. Or, "Do you remember where you were when Kennedy was shot?" Or, "Do you remember where you were on 9/11?" Each of these events were defeats or hold a negative connotation in human history.

What if we remembered something good? We all have lots of memories of good things – birthdays, vacations, lifetime events – that are personal. But can you think of a memory that brought good tidings for human history? It's difficult...

But THAT is why the Resurrection is important. It is a victory, not a defeat. It is a deep part of our human history and the Resurrection should be remembered! And here's why:

1. As long as we remember the Resurrection, we will have a simple gospel. We need simplicity in our lives, especially for the sake of understanding the deep love of God found in the Savior.
2. As long as we remember the Resurrection, we know we are helpless without God to save ourselves. The power of God is Resurrection power that is at work within us to create and sustain our faith in Jesus Christ!
3. As long as we remember the Resurrection, we understand the promises of God in the Scripture from Genesis 1:1 when God created, to Revelation 22:21: The grace of our Lord Jesus is with God's people! The whole story is the history of God's people and the salvation that comes from God through His Son!
4. As long as we remember the Resurrection, we are satisfied in our very souls. Death cannot overtake us – THE Resurrection is OUR Resurrection, and we have comfort in that thought. As we are united with Christ in His baptism, so are we united with Him in His Resurrection, and we go to that place where he is preparing for us to be in His presence forever. That is joy that satisfies the weary soul.

Friends, we are indeed to "Remember the Resurrection!" And share that history with others with the joy and eagerness of the promise of Resurrection Life!

Remember the Resurrection!

Pastor Brenda

April 2021

Sun	Mon	Tue	Wed	Thu	Fri	Sat
						
				1 7:30am-12:30pm Meals on Wheels MAUNDY THURSDAY 7:00pm Worship with Communion	2 7:30am-12:30pm Meals on Wheels GOOD FRIDAY 12-3pm Sanctuary open for anyone wishing to pray 7:00pm Worship	3 EASTER VIGIL
4 10:30 Worship Service (also on FaceBook Live) RESURRECTION SUNDAY	5 7:30am-12:30pm Meals on Wheels Office closed	6 7:30am-12:30pm Meals on Wheels 10am Bible Study 6:30pm Mission & Outreach mtg.	7 7:30am-12:30pm Meals on Wheels 6:30pm Handbells	8 7:30am-12:30pm Meals on Wheels 7pm Hymnody Class 7pm Session mtg.	9 7:30am-12:30pm Meals on Wheels	10
11 10:30am Worship Service (also on FaceBook Live) 2nd Sunday after Easter	12 7:30am-12:30pm Meals on Wheels 7:00pm Ladies Tea	13 7:30am-12:30pm Meals on Wheels 10am Bible Study	14 7:30am-12:30pm Meals on Wheels 10am Finance mtg. 6:30pm Handbells	15 7:30am-12:30pm Meals on Wheels 8:30am MOW Board May Notes Deadline 7pm Hymnody Class 7pm Property mtg.	16 7:30am-12:30pm Meals on Wheels	17
18 10:30 Worship Service (also on FaceBook Live) 3rd Sunday after Easter	19 7:30am-12:30pm Meals on Wheels	20 7:30am-12:30pm Meals on Wheels 10am Bible Study	21 7:30am-12:30pm Meals on Wheels 6:30pm Handbells	22 7:30am-12:30pm Meals on Wheels EARTH DAY 7pm Hymnody Class	23 7:30am-12:30pm Meals on Wheels	24
25 10:30 Worship Service (also on FaceBook Live) 4th Sunday after Easter	26 7:30am-12:30pm Meals on Wheels	27 7:30am-12:30pm Meals on Wheels	28 7:30am-12:30pm Meals on Wheels	29 7:30am-12:30pm Meals on Wheels	30 7:30am-12:30pm Meals on Wheels	

We invite anyone to come to worship as long as you agree to the NHPC guidelines (masks; temperature taken at the door; use hand sanitizer; physically distance from others; no hugging or handshakes). The worship service is livestreamed on the church Facebook page on Sundays at 10:30am at <https://www.facebook.com/pages/category/Presbyterian-Church/New-Hope-Presbyterian-Church-120459321304492/>

APRIL BIRTHDAYS



APRIL ANNIVERSARIES

BEREAVEMENT

Our deepest sympathy to their families.

STEWARDSHIP IS MORE THAN MONEY

Remember that all we have belongs to God and we need to be responsible while managing them.



Hints for the month of April from
the Care Team for Financial Stewardship

This is a good time to:

Money - Support the OGHS (disaster, food, and self-development) along with the youth garden.

Home

Change the batteries in smoke and CO detectors. Have an A/C checkup.

Health

Enjoy the outdoors. Use sunscreen to help prevent skin cancer.

Environment

Cleanup the yard. Plant a tree or shrub for Arbor Day (April 24). Send a picture to the church for the newsletter and/or the church web-site.

SESSION SNIPPETS

Meeting on 3/11/21, the Session...

- Opened with prayer and formation of the roll.
- Approved minutes of the Session meeting held on 2/11/21.
- Had a time of learning led by Bill Siebert about required filings for officers of non-profit corporations (churches for example) in Pennsylvania.
- Restored a few members to the active roll.
- Received a number of reports from Session care teams and committees.
- Decided to send a One Call message to inform the congregation that we will no longer take temperatures as people arrive for worship and to remind people to turn clocks forward to begin daylight savings time on 3/14/21.
- Scheduled the next Session meeting for 4/8/21.
- Closed with prayer.

NEW HOPE PRESBYTERIAN CHURCH 2021 COMMITMENT to PC(USA)

The first two envelopes in the offering envelope boxes you received are for special offerings. The yellow envelope is to be used for a dedication offering that helps to defray the actual costs of the envelopes. Any contribution towards this is appreciated.

The second, blue envelope, is for the per capita apportionment. Per capita is the way we, as Presbyterians, share responsibly for the cost of our life together in ministry and mission as one Church. It demonstrates our faithfulness to the Body of Christ. We as Presbyterians are "joined and knit together" in the PCUSA by the living Christ, who is the head of the church and we share a common commitment to the Great Ends of the Church.

For each member, our commitment is:

- Presbytery mission - \$8.90
- Presbytery per capita - \$22.25
- Synod per capita - \$2.40
- General Assembly per capita - \$8.95

for a total of \$42.50 per member.

Our Session has made the commitment to pay the full amount each year, regardless of the amount contributed by our members. That means that funds are being taken from other ministries to cover the shortfall in what we pay and what we actually receive from congregation members. Please prayerfully consider paying your apportionment for 2021.



Be the light to the world
that God created you to be.

APRIL LADIES' TEA

Ladies of the church, you are welcomed and encouraged to warm your hearts by joining Pastor Brenda for the Ladies' Tea. Although it is usually held on the first Monday of the month, due to the Easter holiday in April it will be held on the 12th. Be prepared to discuss "whatever springs to mind." If you haven't joined us yet, we would love to have you. The May gathering will be our last until fall.



TUESDAY 10 AM BIBLE STUDY

Everyone is welcome to join us, whether in person in the sanctuary OR on Zoom. Let Pastor Brenda know if you want the Zoom link as we study the Book of Job.

THURSDAY NIGHT SPIRITUAL FORMATION: "HYMNODY" AT 7PM – VIA ZOOM

What is "hymnody"? It is the singing or composing of hymns (and the study of them).

Each week, we're looking at a hymn or two (or three!) by reading through the words and understanding the theology, including the scriptural allusions, and work through the meanings, then listen/sing (we'll be at home so it will be safe!).

Please let Pastor Brenda know you will be attending so you can receive the Zoom link to join the class!

SUNDAY VESPERS SERVICE RESUMES:

"Whispers at the Waterfall"

Join Pastor Brenda at 7:00pm at the waterfall on the front lawn when the weekly Sunday evening vespers service resumes on May 2 (if it rains, we will move to the Pavilion). Please bring a lawn chair.

PRAYER REQUESTS

If you would like to place a prayer request, please call _____ or email her at prayerchain@newhopepresbyterian.com. You may also call the church office at 724-863-7702, or send us an email at contactnewhope@verizon.net.

MISSION & OUTREACH FEBRUARY

For February's monthly mission, 31 t-shirts were collected to help Rooted Outreach with filling their kits. The kits will be given to hospitals for the abused & trafficked victims, as needed, when they leave the hospital. To date they are working with 9 local hospitals. Rooted Outreach in this local area is run by 2 women. The donations are stored in their homes. The women are looking for a small area somewhere to store the items that are donated. The donations are taking over their homes. They asked us to pray that an area is found for them, and are confident God will provide the space they need.

To celebrate Arbor Day and Earth Day, which both occur in April, a new tree will be added to our property. The tree will be dedicated on April 25th.

April Monthly Mission is Operation Troop Appreciation. Operation Troop Appreciation is a 100% volunteer 501c3 non-profit organization dedicated to the active and veteran members of our Armed Forces who serve(d) and sacrifice(d) for our country.

We will be collecting kitchen and large trash bags during the month of April.

"Greater love has no one than this, that one lay down his life for his friends." (John 15:13)

NEW HOPE CHURCH MAILBOX

Thank you so much for the Lenten devotional! Enclosed is a check for the fish offering (One Great Hour of Sharing). It is so nice to have a thoughtful church.



Dear New Hope Presbyterian Church,
The Norwin Lions and students of Hahntown, Sunset Valley, Stewartville Elementary Schools and Hillcrest sincerely "Thank You" for your generous donation to the Norwin Lions Kitty Sack Program. The food provided to the children over the weekend is truly life-changing. I do have to tell you the school has been providing meals for their children. We are prepared to continue our program as soon as possible. Thanks again!

The Norwin Lions

YOUR NEW HOPE ELDERS

MAY NEWSLETTER

The deadline for the May newsletter is on **Thursday, April 15**. Please submit any articles, photos, and committee information to the church office via email. Thank you!

Inscribe the Word

THE PROMISES OF GOD SERIES

30 PROMISES FOR APRIL

"THE LORD GIVES SIGHT TO THE BLIND,
THE LORD LIFTS UP THOSE WHO ARE BOWED DOWN,
THE LORD LOVES THE RIGHTEOUS."

-PSALM 146:8

- | | |
|--|--|
| <input type="checkbox"/> 1. Isaiah 35:8-9 | <input type="checkbox"/> 15. Proverbs 10:23-25 |
| <input type="checkbox"/> 2. 1 Timothy 4:14-16 | <input type="checkbox"/> 16. Zechariah 14:20-21 |
| <input type="checkbox"/> 3. 2 Kings 22:18-20 | <input type="checkbox"/> 17. Proverbs 16:6-7 |
| <input type="checkbox"/> 4. Exodus 23:27-28 | <input type="checkbox"/> 18. Joshua 1:5-6 |
| <input type="checkbox"/> 5. Isaiah 44:21-23 | <input type="checkbox"/> 19. Ezekiel 34:11-13 |
| <input type="checkbox"/> 6. Zechariah 14:8-9 | <input type="checkbox"/> 20. Romans 1:16-17 |
| <input type="checkbox"/> 7. Deuteronomy 28:10-11 | <input type="checkbox"/> 21. Proverbs 19:15-17 |
|
 | |
| <input type="checkbox"/> 8. Acts 23:10-11 | <input type="checkbox"/> 22. Psalm 146:8-10 |
| <input type="checkbox"/> 9. Psalm 119:165-168 | <input type="checkbox"/> 23. Revelation 2:10-11 |
| <input type="checkbox"/> 10. Numbers 21:7-9 | <input type="checkbox"/> 24. Malachi 3:8-10 |
| <input type="checkbox"/> 11. Jeremiah 31:33-34 | <input type="checkbox"/> 25. Proverbs 20:5-7 |
| <input type="checkbox"/> 12. Jeremiah 31:35-36 | <input type="checkbox"/> 26. Deuteronomy 15:18 |
| <input type="checkbox"/> 13. Philippians 3:20-21 | <input type="checkbox"/> 27. Psalm 138:7-8 |
| <input type="checkbox"/> 14. Psalm 47:1-4 | <input type="checkbox"/> 28. 2 Corinthians 6:16-17 |
| | |
| | <input type="checkbox"/> 29. Proverbs 20:20-22 |
| | <input type="checkbox"/> 30. Revelation 2:17 |

APRIL SCRIPTURE WRITING PLAN

Writing out Scriptures is a way to understand God's Word and Hear His voice without distractions.
Grab your journal, your Bible, and some pretty pens, and let us INSCRIBE THE WORD together.

For more resources and to join our Inscribe the Word Community, visit

WWW.ASYMPHONYOFPRAISE.COM

