



THOMAS MASON®

FOUNDED 1796
NELSON LANCASHIRE ENGLAND

BESPOKE

OXFORDS, POPLINS & TWILLS



Thomas Mason founded his weaving mill in 1796 at the height of the English Industrial Revolution, when many entrepreneurs around Manchester, in Lancashire and in Yorkshire formed together the most famous textile empire of the world. Two centuries later **Thomas Mason** 100% cotton fabrics are still being made in the traditional English way, and are sold worldwide.

Thomas Mason is a selection of classic two fold cotton shirtings, produced in the best tradition of fine English cloth. The combination of a special twist given to the fine yarns, plus the traditional pure finishing method, confer a special lustre and softness; characteristics which make **Thomas Mason** fabrics quite unique in their class. **Thomas Mason** make their resultant garments stand apart; defining their style, enhancing their excellence, and ensuring the highest quality of the end product.



Shirts made in **Thomas Mason** poplin soften with washing, and being both quick and easy to iron, thus combine practicality with the highest tradition of quality.





Over the years the **Thomas Mason** label has become a subtle expression of the spirit and heritage of the brand. It is synonymous with the fineness of the yarn, the continuous design research, and the special fabric finishing and production treatments. In other words, the **Thomas Mason** label is a guarantee of excellence.



To enhance the preciousness of your bespoke shirt, **Thomas Mason** is offering you a beautiful shirt and “gusset” label as well as a pair of **Thomas Mason** collar bones that have been especially created for the Bespoke line.



THOMAS MASON®

FOUNDED 1796

NELSON LANCASHIRE ENGLAND

BESPOKE

SOLIDS AND STRIPES

100/2 POPLIN

Z2-3332885 (1)



Z2-3332886 (2)

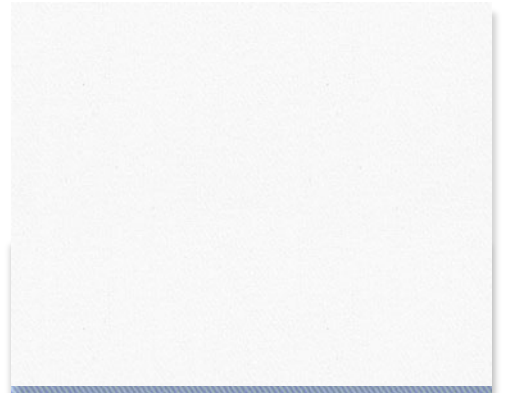


Z2-3332887 (3)

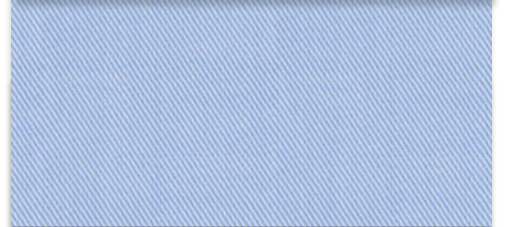


80/2 TWILL

Z4-3332893 (9)



Z4-3332894 (10)

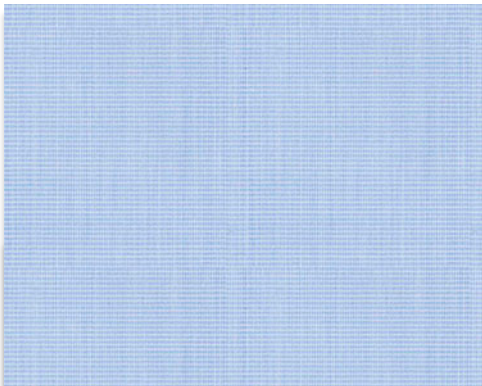


Z4-3332895 (11)

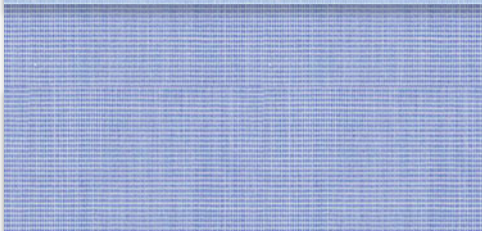


100/2 POPLIN

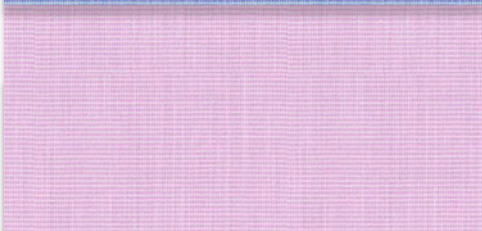
Z2-3332888 (4)



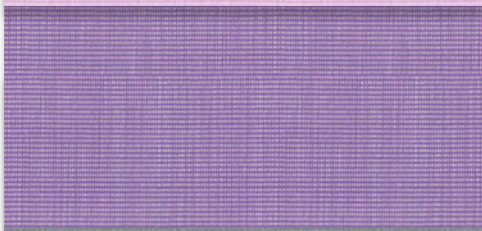
Z2-3332889 (5)



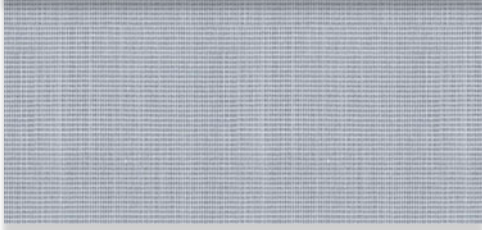
Z2-3332890 (6)



Z2-3332891 (7)

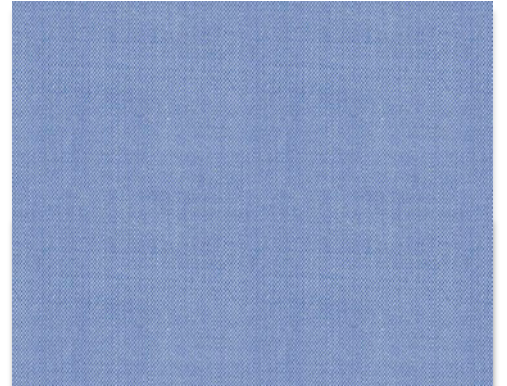


Z2-3332892 (8)



100/2 POPLIN

Z2-3332896 (12)

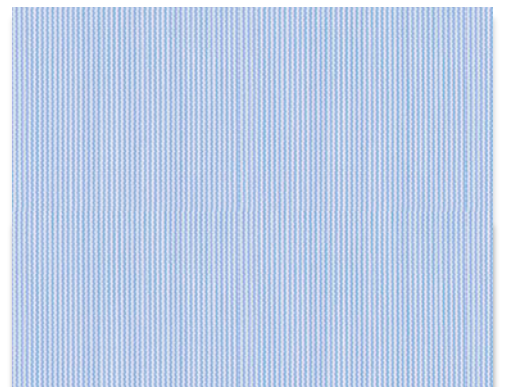


Z2-3332897 (13)

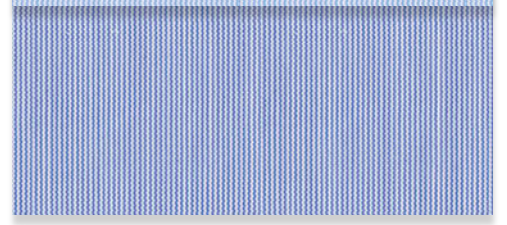


100/2 POPLIN

Z2-3332898 (14)



Z2-3332899 (15)



100/2 OXFORD

100/2 OXFORD

Z4-3332900 (16)

Z4-3332909 (25)

Z4-3332901 (17)

Z4-3332910 (26)

Z4-3332902 (18)

Z4-3332911 (27)

80/2 TWILL

100/2 TWILL

Z4-3332903 (19)

Z4-3332912 (28)

Z4-3332904 (20)

Z4-3332913 (29)

100/2 TWILL

100/2 TWILL

Z4-3332905 (21)

Z4-3332914 (30)

Z4-3332906 (22)

Z4-3332915 (31)

Z4-3332907 (23)

Z4-3332916 (32)

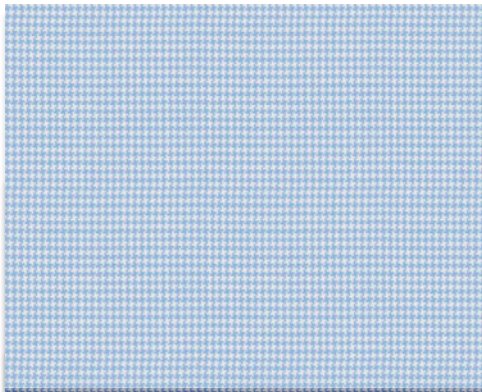
Z4-3332908 (24)

Z4-3332917 (33)

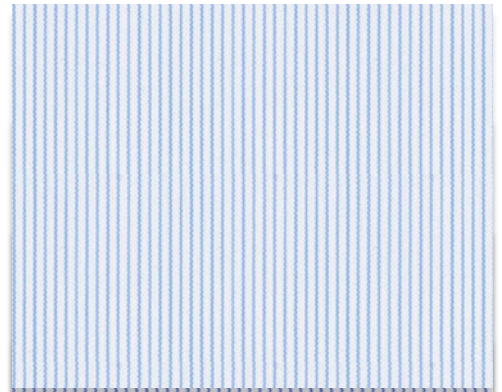
100/2 POPLIN

100/2 POPLIN

Z2-3332918 (34)



Z2-3332930 (46)



Z2-3332919 (35)



Z2-3332931 (47)



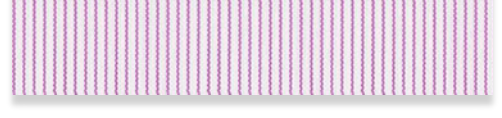
Z2-3332920 (36)



Z2-3332932 (48)



Z2-3332933 (49)

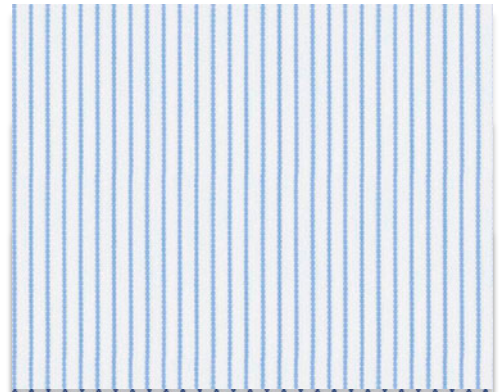


Z2-3332921 (37)



100/2 POPLIN

Z2-3332922 (38)



Z2-3332934 (50)

Z2-3332923 (39)



Z2-3332935 (51)



Z2-3332924 (40)



Z2-3332936 (52)

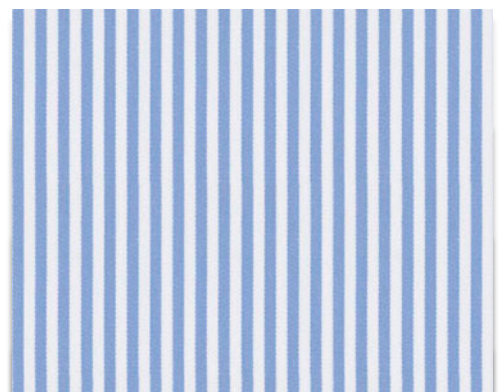


Z2-3332925 (41)



100% COTTON POPLIN

Z2-3332926 (42)



Z2-3332937 (53)

Z2-3332927 (43)



Z2-3332938 (54)



Z2-3332928 (44)



Z2-3332939 (55)



Z2-3332929 (45)

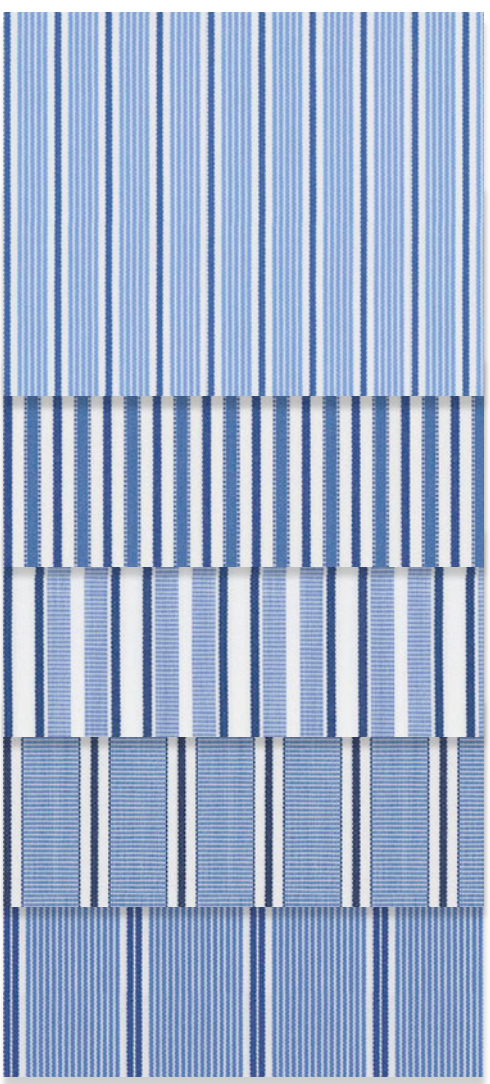


Z2-3332940 (56)



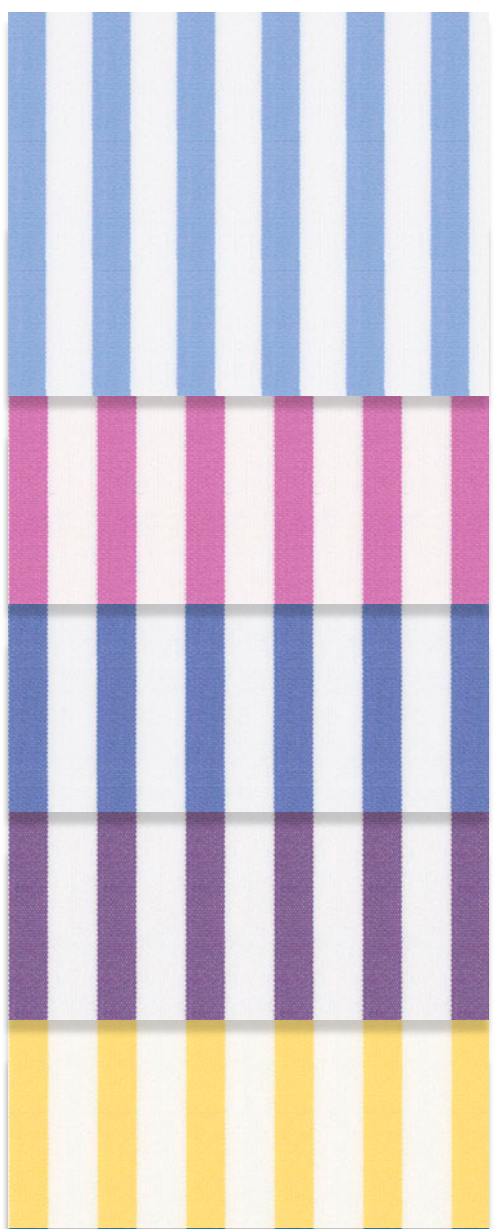
100% COTTON POPLIN

Z2-3332941 (57)
 Z2-3332942 (58)
 Z2-3332943 (59)
 Z2-3332944 (60)
 Z2-3332945 (61)



100/2 POPLIN

Z2-3332951 (67)
 Z2-3332952 (68)
 Z2-3332953 (69)
 Z2-3332954 (70)
 Z2-3332955 (71)

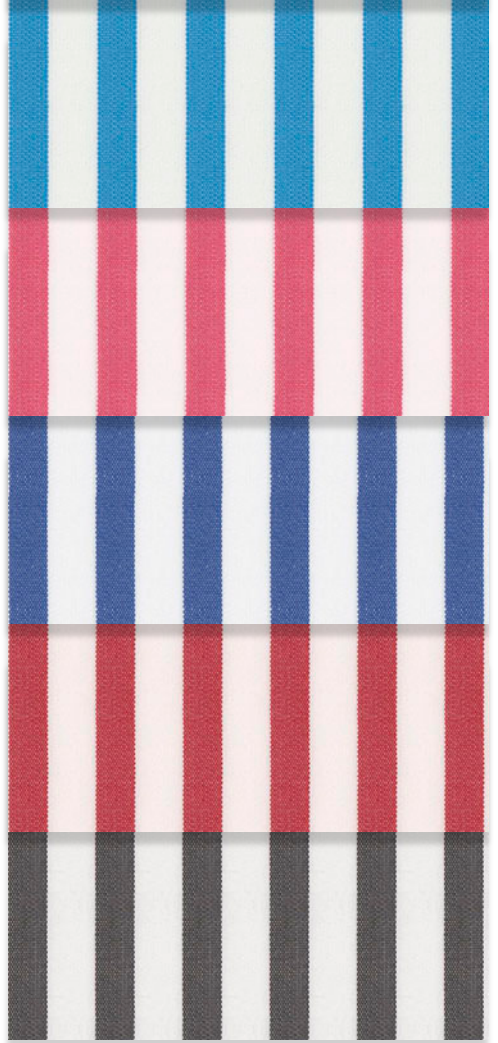


100/2 POPLIN

Z2-3332946 (62)
 Z2-3332947 (63)
 Z2-3332948 (64)
 Z2-3332949 (65)
 Z2-3332950 (66)



Z2-3332956 (72)
 Z2-3332957 (73)
 Z2-3332958 (74)
 Z2-3332959 (75)
 Z2-3332960 (76)





THOMAS MASON®

FOUNDED 1796
NELSON LANCASHIRE ENGLAND

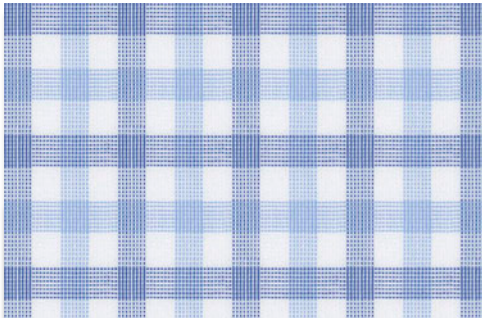
Checks and Plaids

BESPOKE

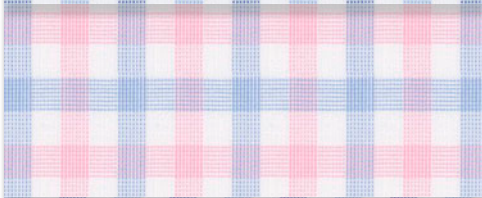
CHECKS AND PLAIDS

100/2 POPLIN

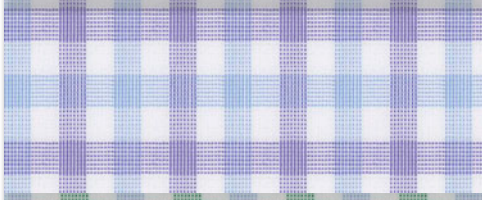
Z2-3332961 (1)



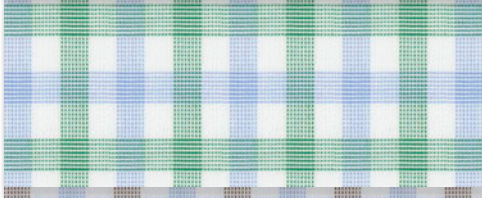
Z2-3332962 (2)



Z2-3332963 (3)



Z2-3332964 (4)

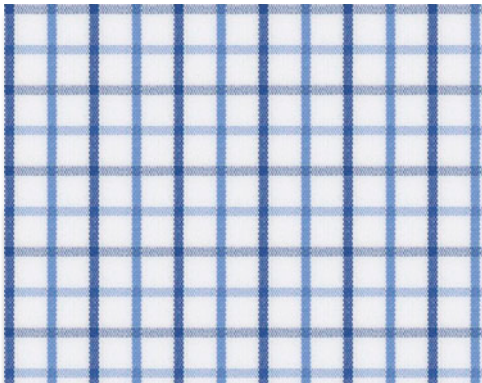


Z2-3332965 (5)



100/2 POPLIN

Z2-3332966 (6)



Z2-3332967 (7)



Z2-3332968 (8)

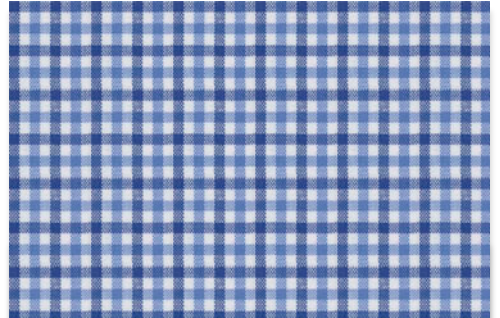


Z2-3332969 (9)



100% COTTON POPLIN

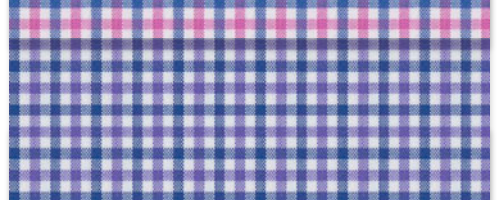
Z2-3332970 (10)



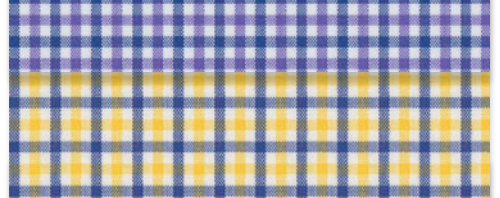
Z2-3332971 (11)



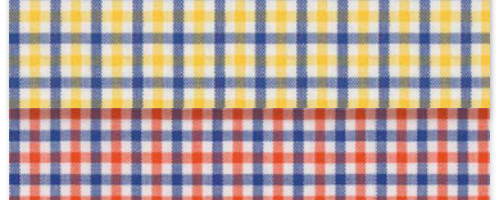
Z2-3332972 (12)



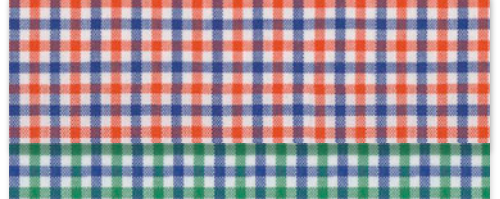
Z2-3332973 (13)



Z2-3332974 (14)



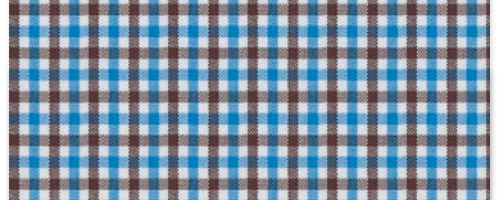
Z2-3332975 (15)



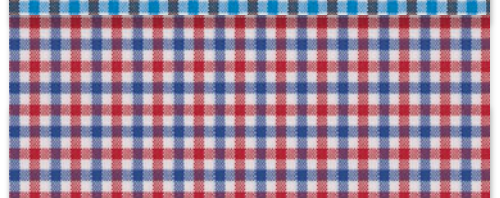
Z2-3332976 (16)



Z2-3332977 (17)



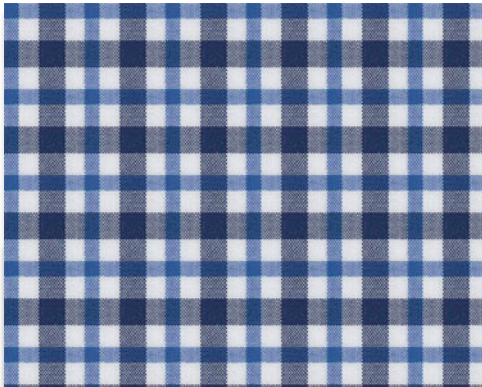
Z2-3332978 (18)



100% COTTON POPLIN

100/2 OXFORD

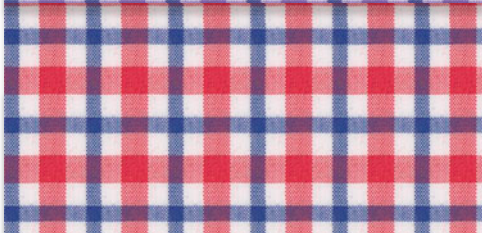
Z2-3332979 (19)



Z2-3332980 (20)



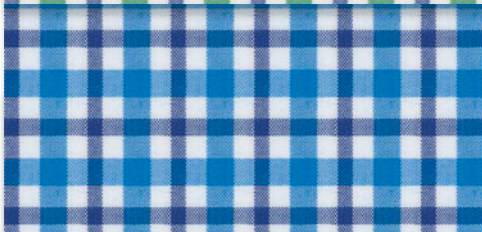
Z2-3332981 (21)



Z2-3332982 (22)



Z2-3332983 (23)



Z2-3332984 (24)



Z2-3332985 (25)



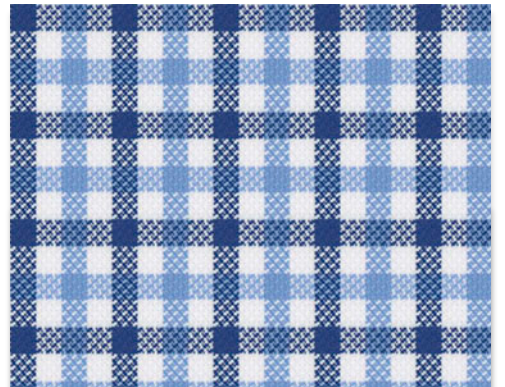
Z2-3332986 (26)



Z2-3332987 (27)



Z4-3332988 (28)



Z4-3332989 (29)



Z4-3332990 (30)

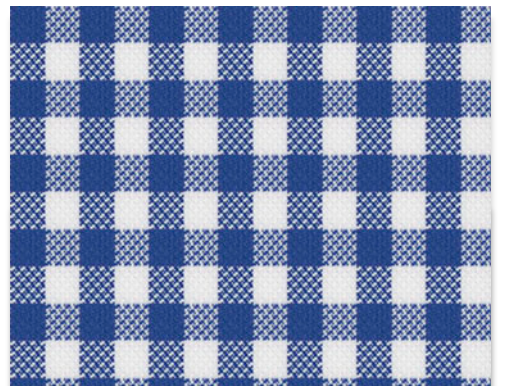


Z4-3332991 (31)



100/2 OXFORD

Z4-3332992 (32)



Z4-3332993 (33)



Z4-3332994 (34)



Z4-3332995 (35)

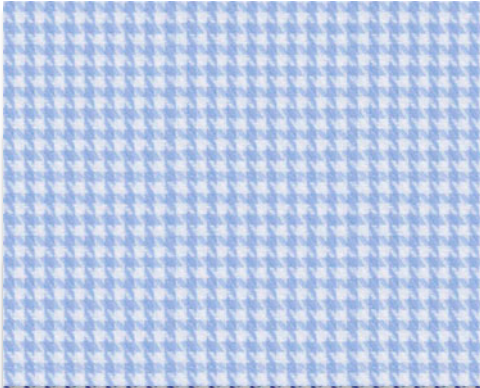


Z4-3332996 (36)



100/2 TWILL

Z4-3332997 (37)



Z4-3332998 (38)



Z4-3332999 (39)

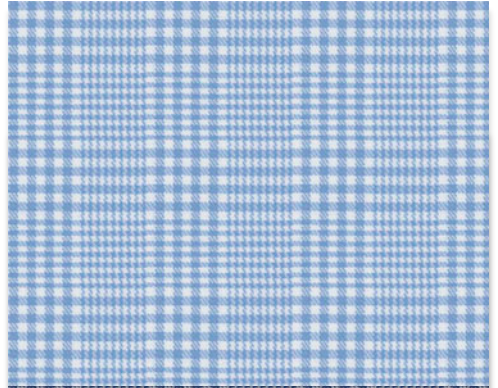


Z4-3333000 (40)



100/2 TWILL

Z4-3333007 (47)

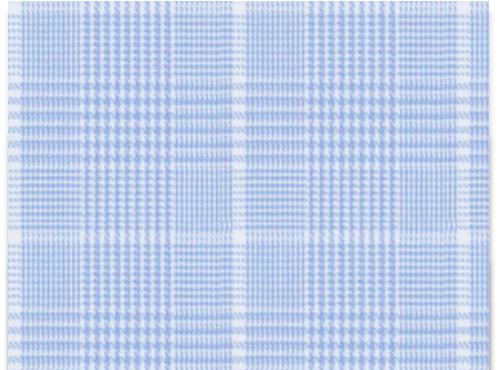


Z4-3333008 (48)

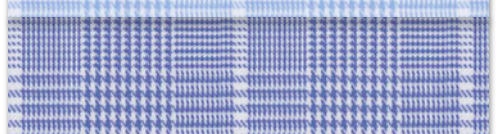


100/2 TWILL

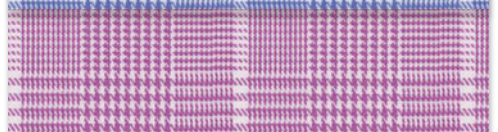
Z4-3333009 (49)



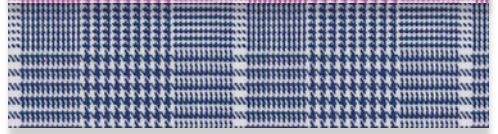
Z4-3333010 (50)



Z4-3333011 (51)

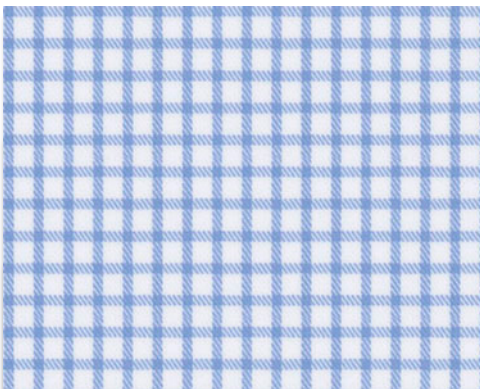


Z4-3333012 (52)



100/2 TWILL

Z4-3333001 (41)



Z4-3333002 (42)

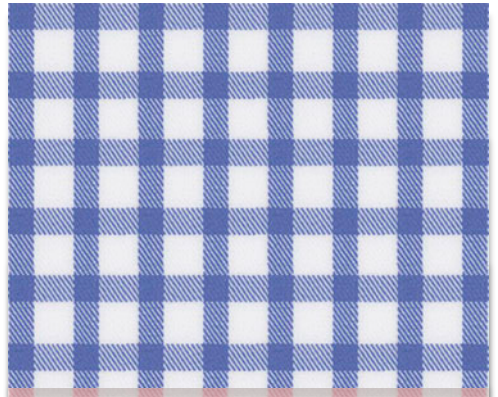


Z4-3333003 (43)



100/2 TWILL

Z4-3333013 (53)



Z4-3333014 (54)



Z4-3333015 (55)



Z4-3333016 (56)



100% COTTON TWILL

Z4-3333004 (44)



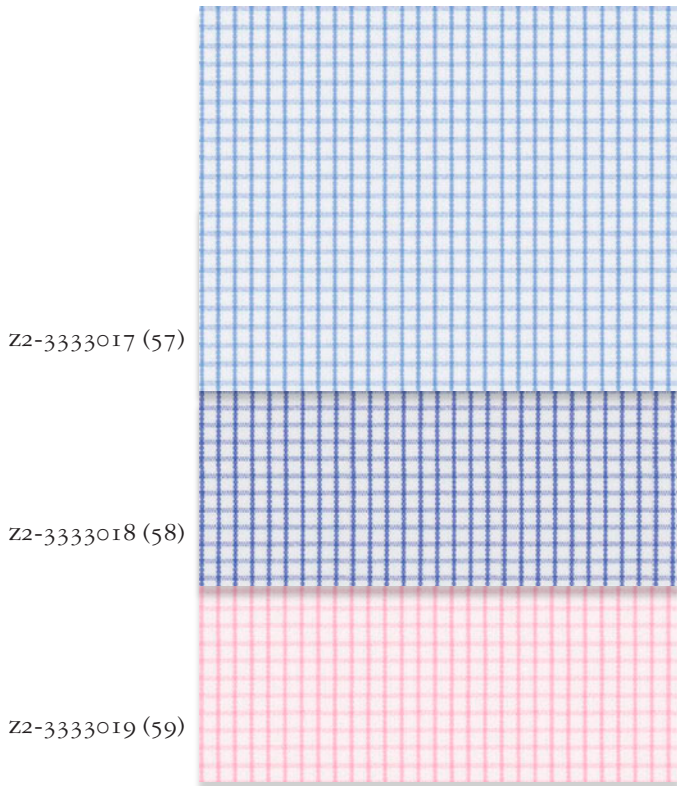
Z4-3333005 (45)



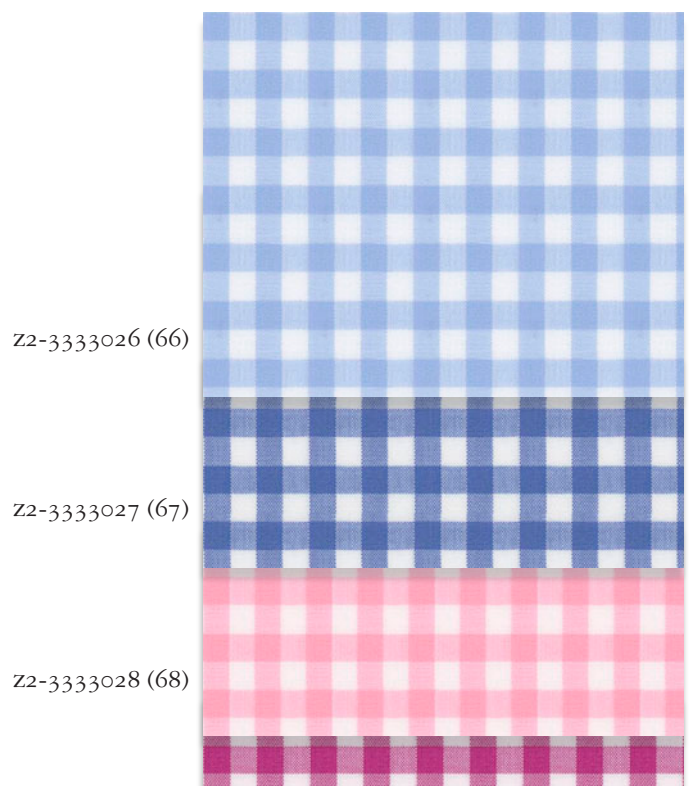
Z4-3333006 (46)



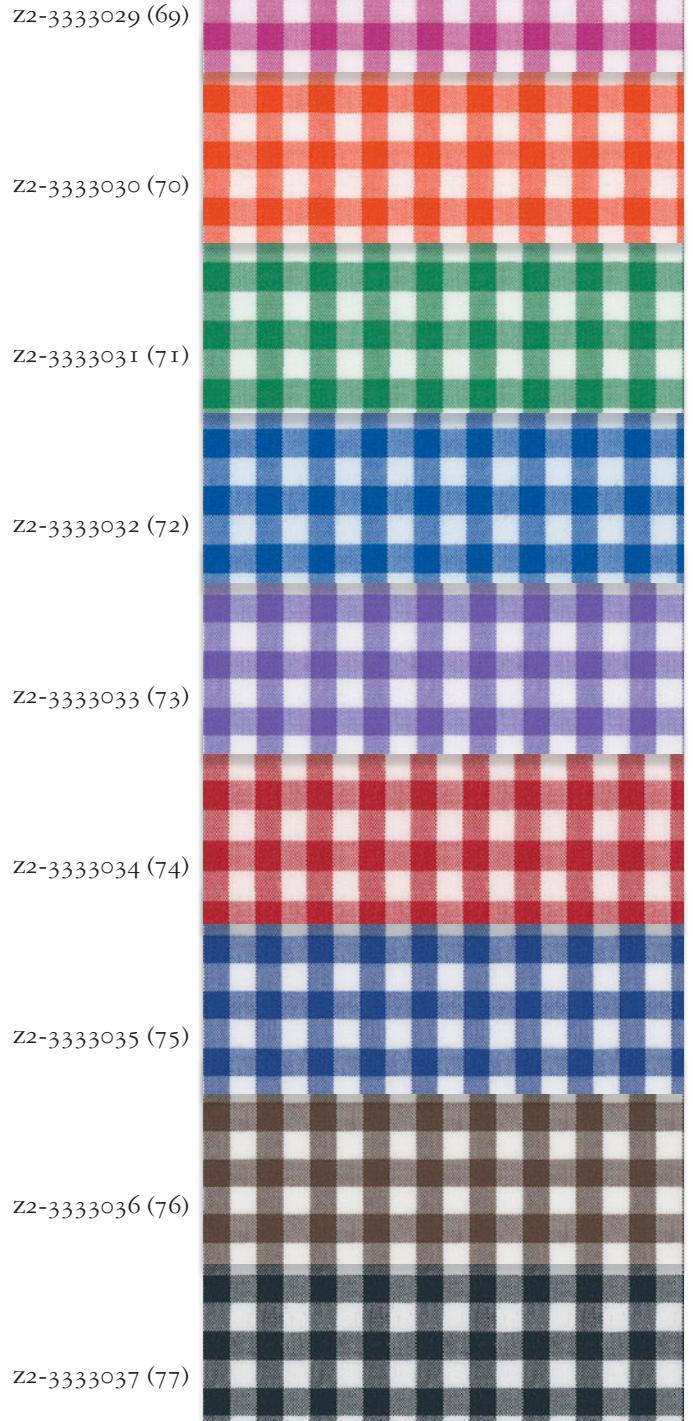
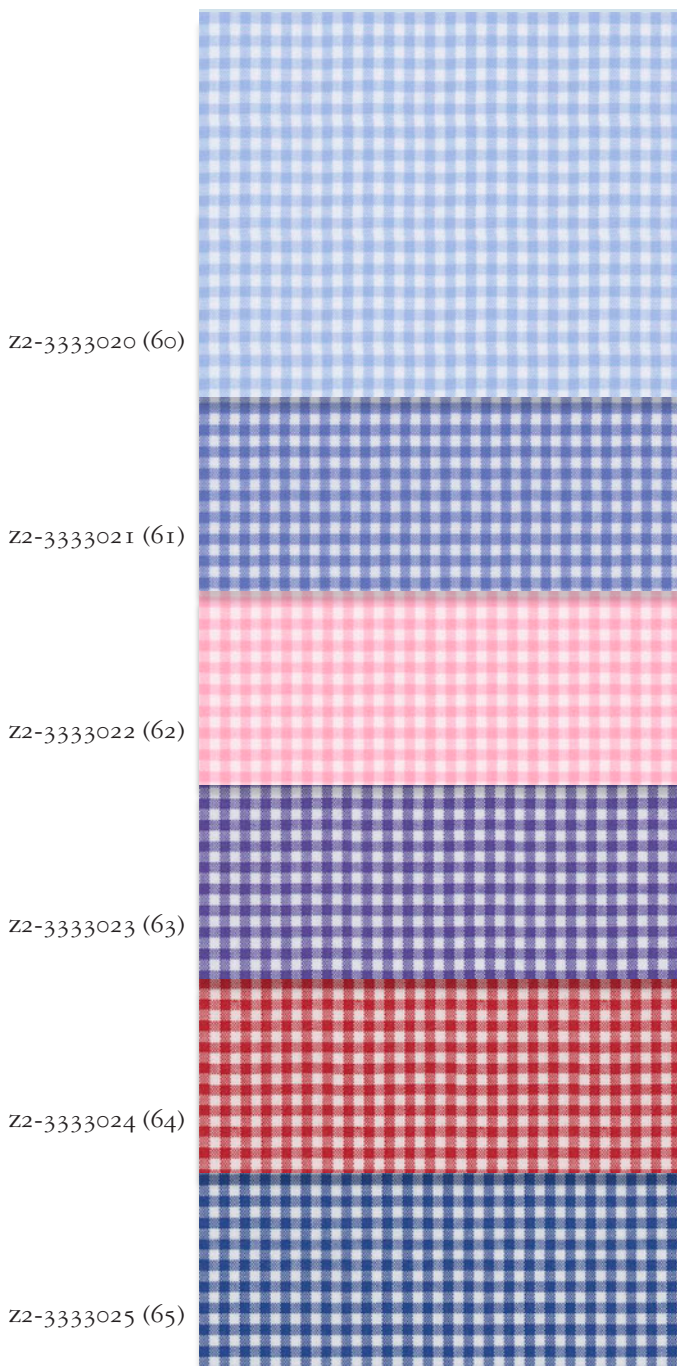
100/2 POPLIN



100% COTTON POPLIN



100% COTTON POPLIN





THOMAS MASON®

FOUNDED 1796
NELSON LANCASHIRE ENGLAND

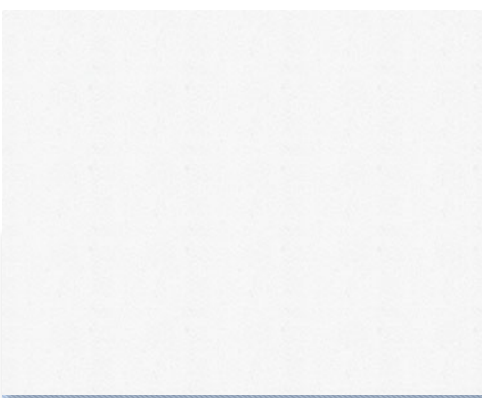
BESPOKE

LUXE

Luxe

200/2 TWILL

Z9-3333038 (1)

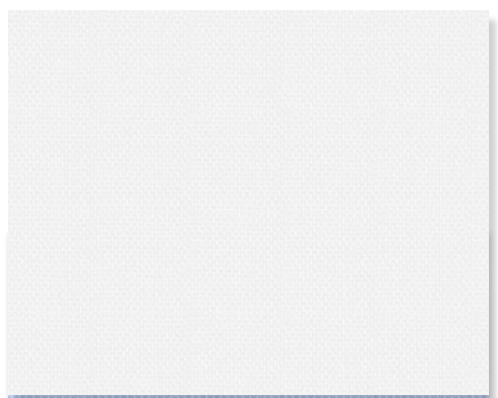


Z9-3333039 (2)



200/2 OXFORD

Z9-3333045 (8)

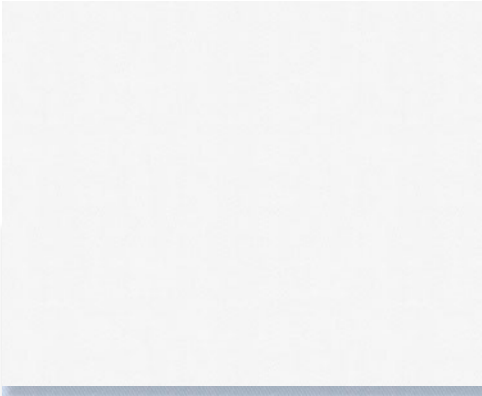


Z9-3333046 (9)



140/2 FINE TWILL

Z8-3333040 (3)

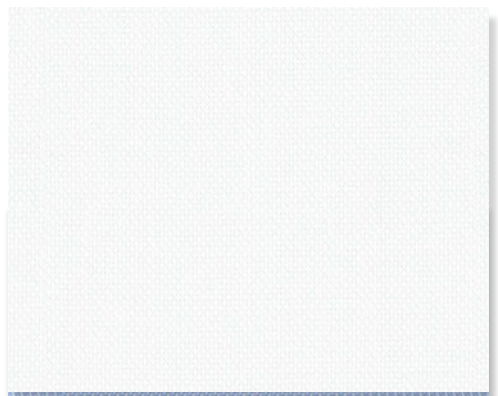


Z8-3333041 (4)



140/2 OXFORD

Z8-3333047 (10)

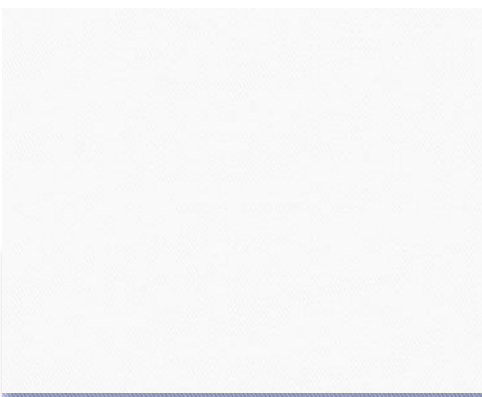


Z8-3333048 (11)



140/2 TWILL

Z8-3333042 (5)



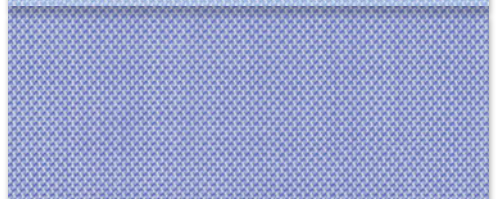
Z8-3333043 (6)



Z8-3333044 (7)



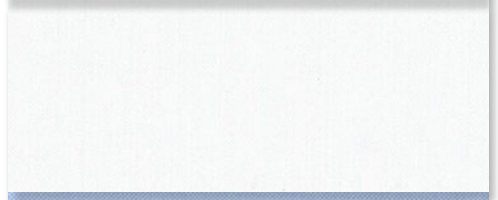
Z8-3333049 (12)



Z8-3333050 (13)



Z6-3333051 (14)



Z6-3333052 (15)



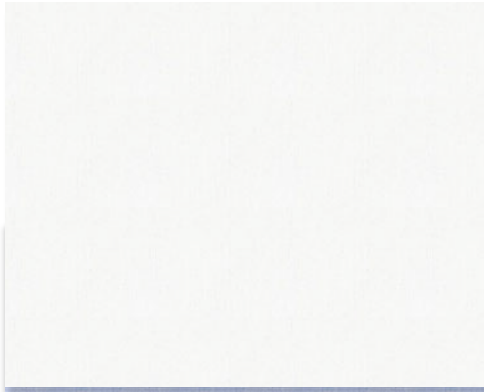
Z6-3333053 (16)



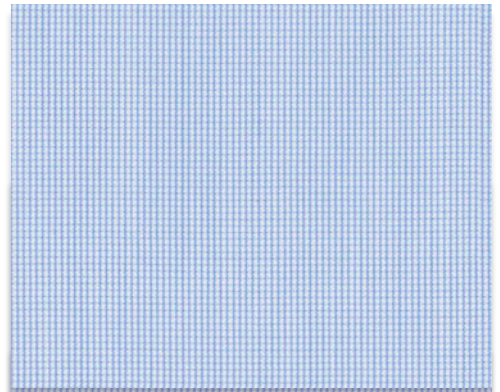
200/2 POPLIN

120/2 POPLIN

z9-3333054 (17)



z6-3333061 (24)



z9-3333055 (18)

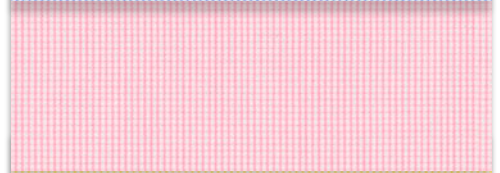


z6-3333062 (25)

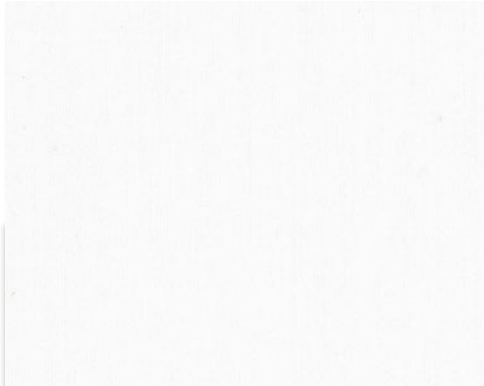


140/2 POPLIN

z6-3333063 (26)



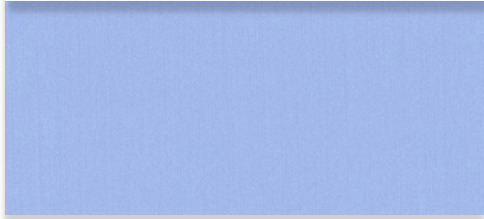
z8-3333056 (19)



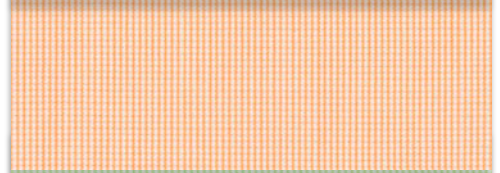
z6-3333064 (27)



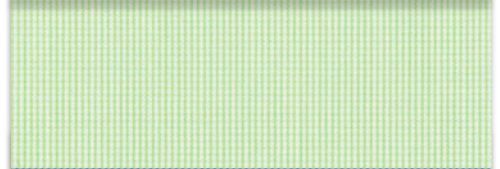
z8-3333057 (20)



z6-3333065 (28)



z6-3333066 (29)

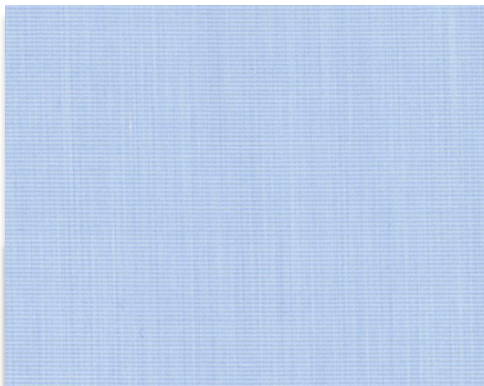


140/2 POPLIN

z6-3333067 (30)



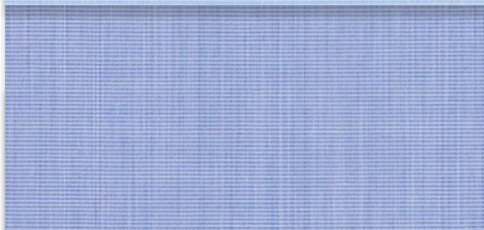
z8-3333058 (21)



z6-3333068 (31)

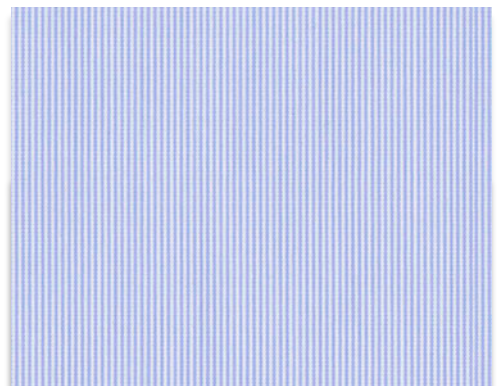


z8-3333059 (22)

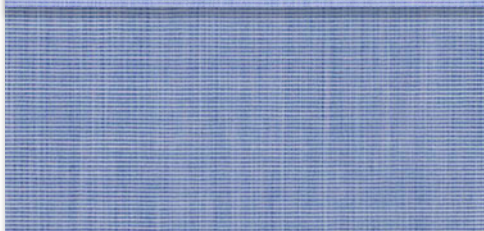


140/2 POPLIN

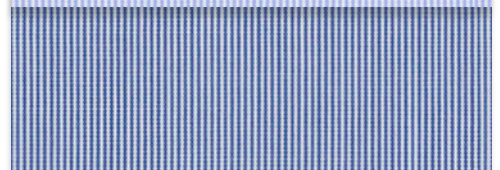
z8-3333069 (32)



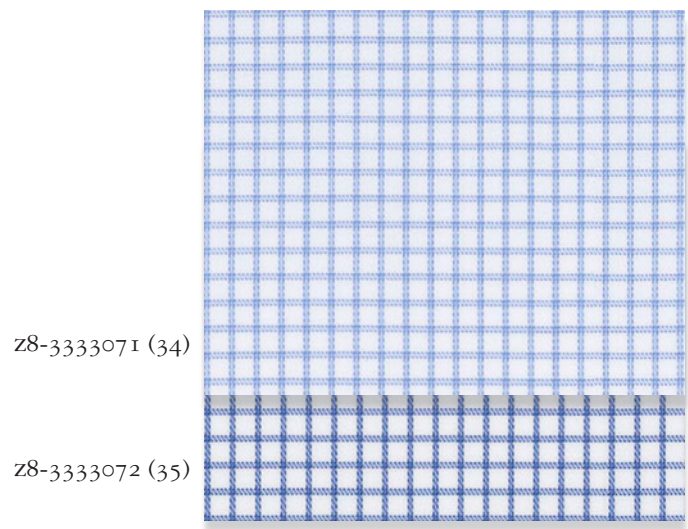
z8-3333060 (23)



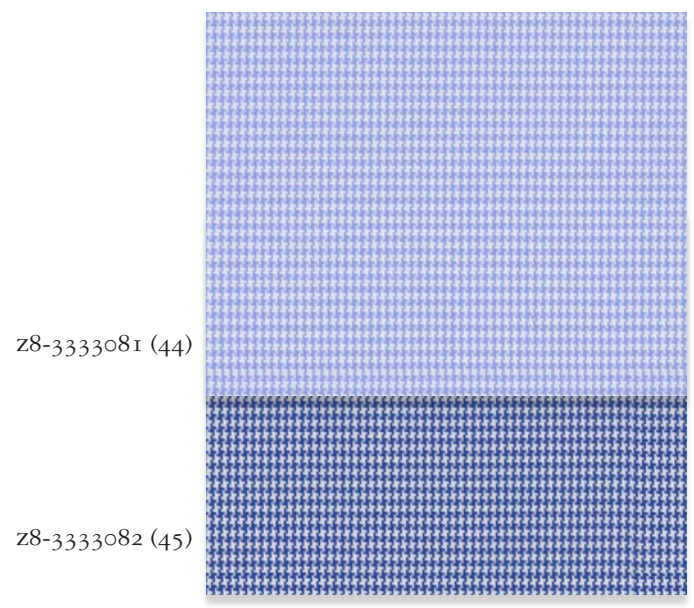
z8-3333070 (33)



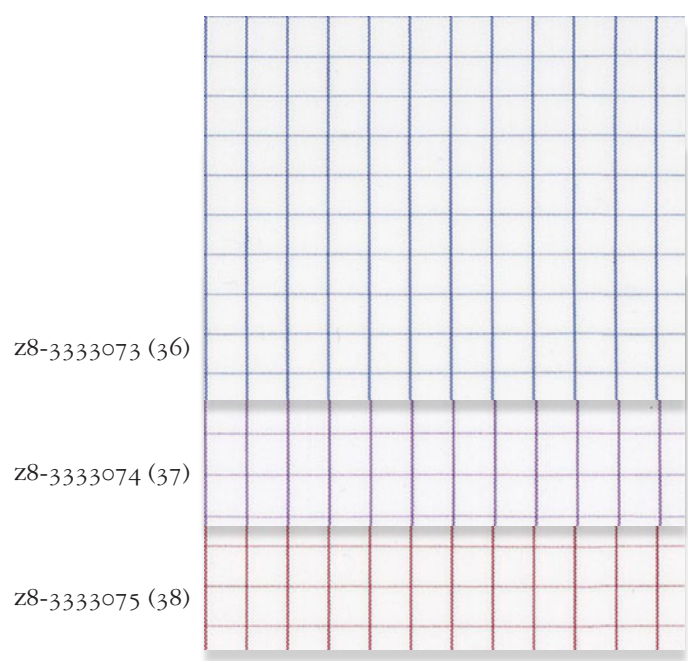
140/2 TWILL



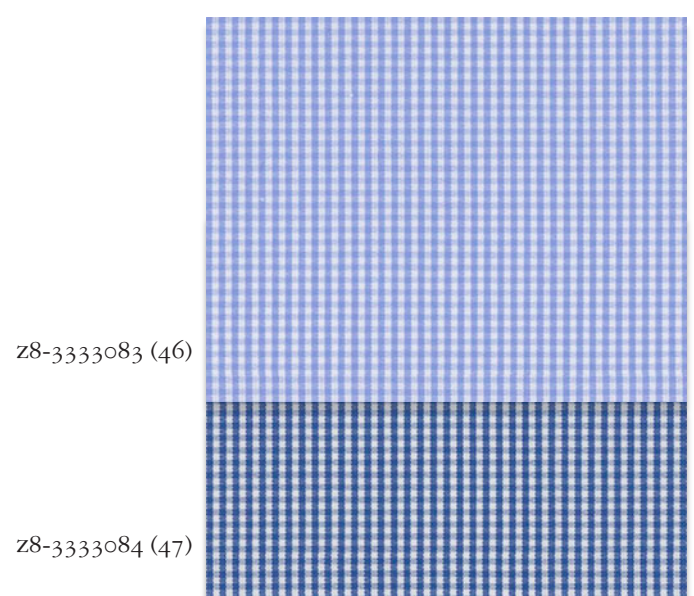
140/2 TWILL



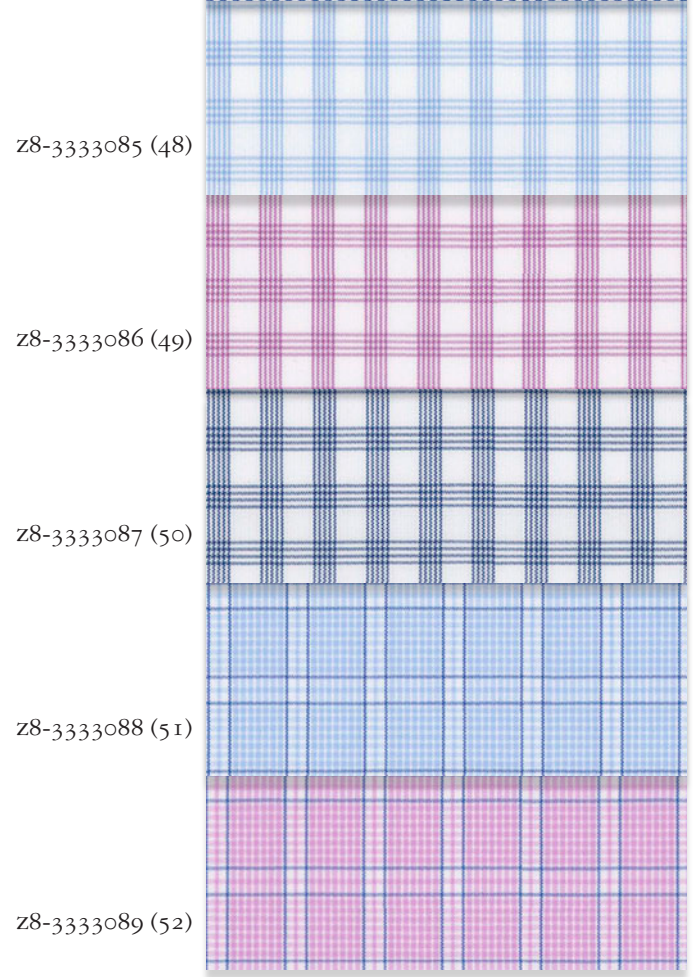
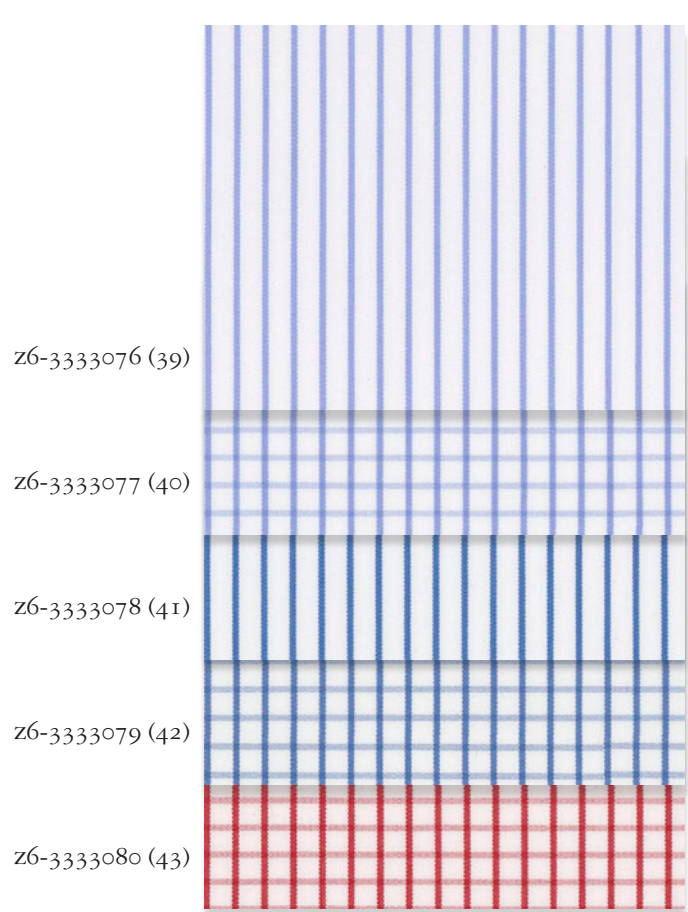
140/2 POPLIN



140/2 POPLIN



120/2 POPLIN



120/2 POPLIN

140/2 TWILL

z6-3333090 (53)

z8-3333100 (63)

z6-3333091 (54)

z8-3333101 (64)

z8-3333102 (65)

z8-3333103 (66)

140/2 POPLIN

140/2 POPLIN

z8-3333092 (55)

z8-3333104 (67)

z8-3333093 (56)

z8-3333105 (68)

z8-3333094 (57)

140/2 TWILL

z8-3333095 (58)

140/2 TWILL

z8-3333106 (69)

z8-3333107 (70)

z8-3333096 (59)

120/2 POPLIN

z8-3333097 (60)

z8-3333098 (61)

z6-3333108 (71)

z8-3333099 (62)

z6-3333109 (72)