

# OUTERWEAR

---

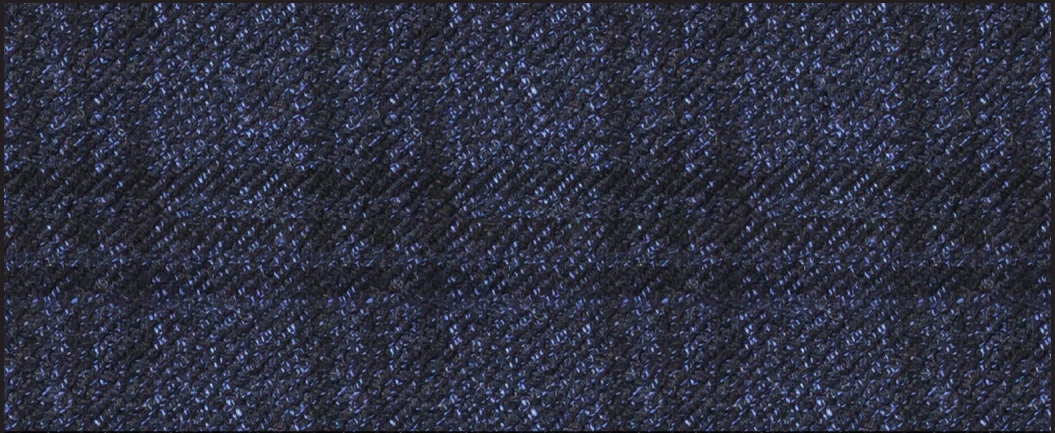
Volume 18082



# OUTERWEAR

## **C4-3754921 (1)**

Blue Navy Plaid  
510 gm / 18 oz  
70% Trevira / 30% Wool



## **C4-3754922 (2)**

Charcoal Black Plaid  
510 gm / 18 oz  
70% Trevira / 30% Wool



## **C4-3754923 (3)**

Black White Herringbone  
510 gm / 18 oz  
50% Wool / 50% Trevira



## **C4-3754924 (4)**

Blue Navy Herringbone  
510 gm / 18 oz  
50% Wool / 50% Trevira



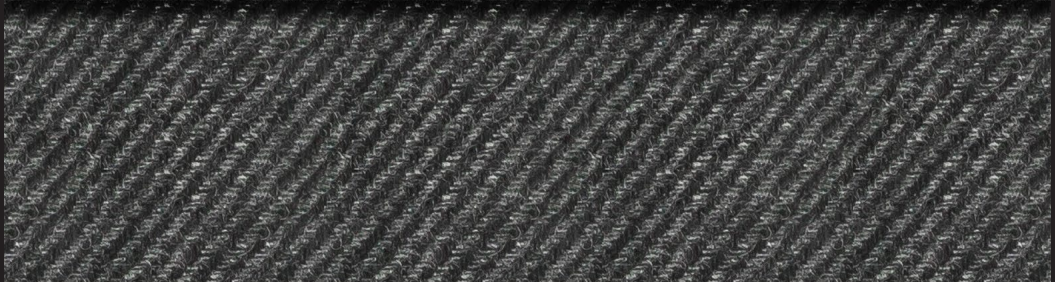
## **C4-3754925 (5)**

Grey Charcoal Herringbone  
510 gm / 18 oz  
50% Wool / 50% Trevira



## **C4-3754926 (6)**

Grey Charcoal Twill  
510 gm / 18 oz  
50% Wool / 50% Trevira



## **C4-3754927 (7)**

Brown Black Twill  
510 gm / 18 oz  
50% Wool / 50% Trevira



## **C4-3754928 (8)**

Blue Navy Twill  
510 gm / 18 oz  
50% Wool / 50% Trevira

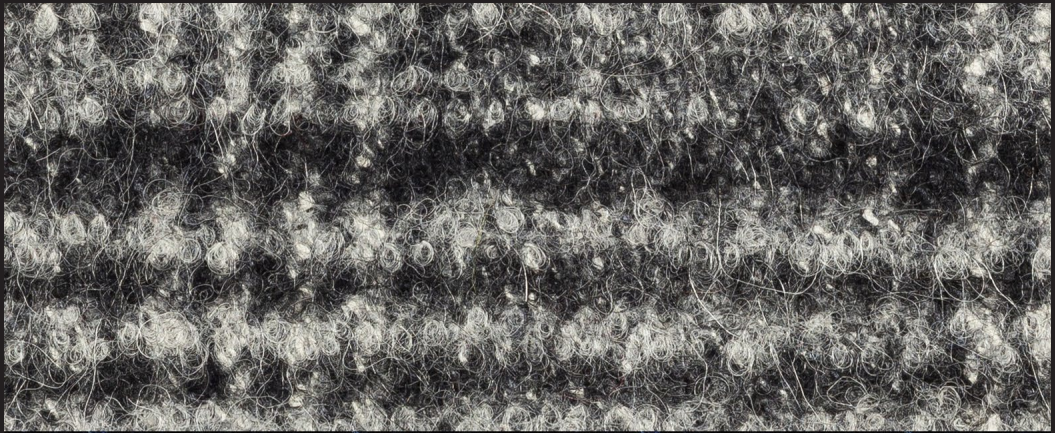




# OUTERWEAR

## Z6-3754929 (9)

Charcoal Grey Expanded Plaid  
550 gm / 19.5 oz  
70% Wool / 10% Alpaca / 10% Mohair  
5% Silk / 5% Nylon



## Z6-3754930 (10)

Navy Expanded Herringbone  
550 gm / 19.5 oz  
70% Wool / 10% Alpaca / 10% Mohair  
5% Silk / 5% Nylon



## Z6-3754931 (11)

Grey Expanded Herringbone  
550 gm / 19.5 oz  
70% Wool / 10% Alpaca / 10% Mohair  
5% Silk / 5% Nylon



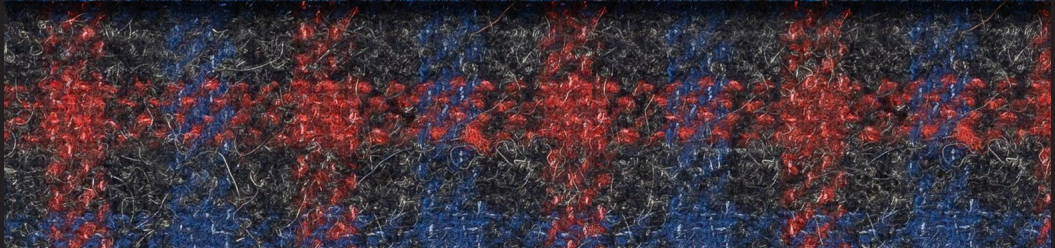
## Z4-3754932 (12)

Navy Blue Basket  
330 gm / 11.5 oz  
95% Wool / 5% Nylon



## Z6-3754933 (13)

Red Charcoal Check  
400 gm / 14 oz  
61% Wool / 16% Mohair  
14% Silk / 9% Cashmere



## Z6-3754934 (14)

Blue Diamond  
530 gm / 18.5 oz  
100% Wool



## Z6-3754935 (15)

Grey Black Exploded Houndstooth  
530 gm / 18.5 oz  
100% Wool



## Z6-3754936 (16)

Blue Navy Exploded Houndstooth  
530 gm / 18.5 oz  
100% Wool



## Z4-3754937 (17)

Grey Brown Check Double Faced  
470 gm / 16.5 oz  
100% Wool

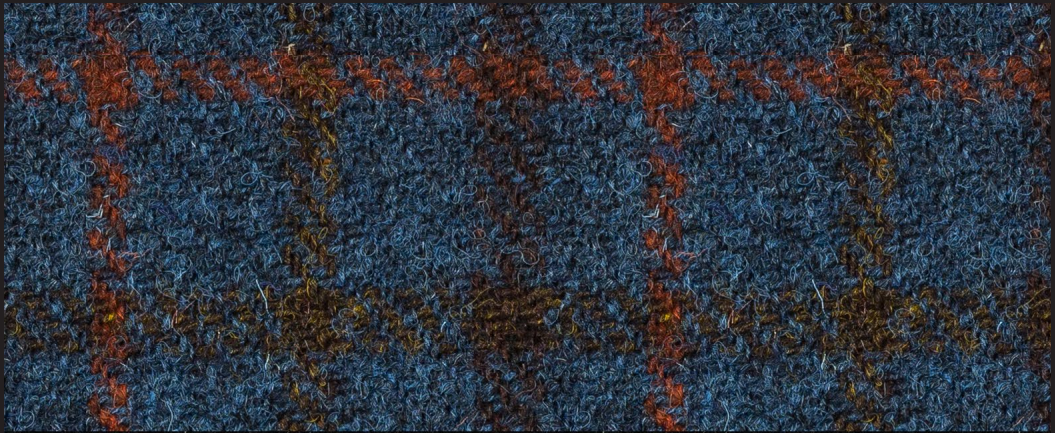




# OUTERWEAR

## Z4-3754938 (18)

Blue Orange Check Harris Tweed  
470 gm / 16.5 oz  
100% Wool



## Z4-3754939 (19)

Grey Blue Check Harris Tweed  
470 gm / 16.5 oz  
100% Wool



## Z4-3754940 (20)

Charcoal Rust Houndstooth Harris Tweed  
470 gm / 16.5 oz  
100% Wool



## Z4-3754941 (21)

Charcoal Blue Houndstooth Harris Tweed  
470 gm / 16.5 oz  
100% Wool



## Z4-3754942 (22)

Grey Barleycorn Harris Tweed  
470 gm / 16.5 oz  
100% Wool



## Z4-3754943 (23)

Blue Barleycorn Harris Tweed  
470 gm / 16.5 oz  
100% Wool



## Z6-3754944 (24)

Brown Melange Solid  
550 gm / 19.5 oz  
70% Wool / 10% Alpaca / 10% Mohair  
5% Silk / 5% Nylon



## Z6-3754945 (25)

Olive Navy Melange Solid  
550 gm / 19.5 oz  
70% Wool / 10% Alpaca / 10% Mohair  
5% Silk / 5% Nylon



## Z6-3754946 (26)

Blue Melange Solid  
550 gm / 19.5 oz  
70% Wool / 10% Alpaca / 10% Mohair  
5% Silk / 5% Nylon





# OUTERWEAR

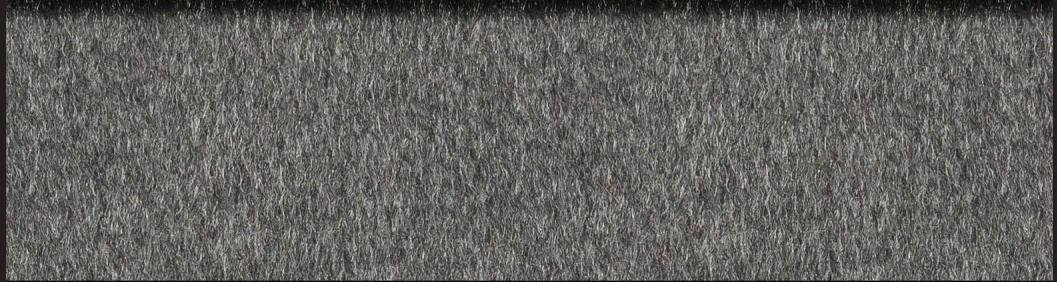
## Z9-3754947 (27)

Camel Solid  
460 gm / 16 oz  
100% Cashmere



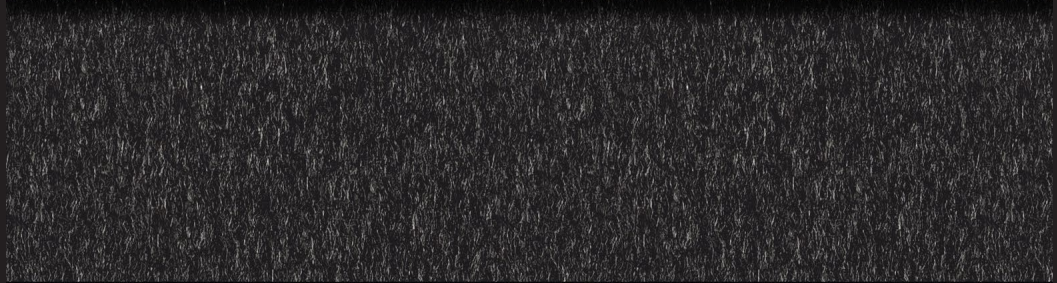
## Z9-3754948 (28)

Grey Solid  
460 gm / 16 oz  
100% Cashmere



## Z9-3754949 (29)

Charcoal Solid  
460 gm / 16 oz  
100% Cashmere



## Z9-3754950 (30)

Navy Solid  
460 gm / 16 oz  
100% Cashmere



## Z9-3754951 (31)

Black Solid  
460 gm / 16 oz  
100% Cashmere



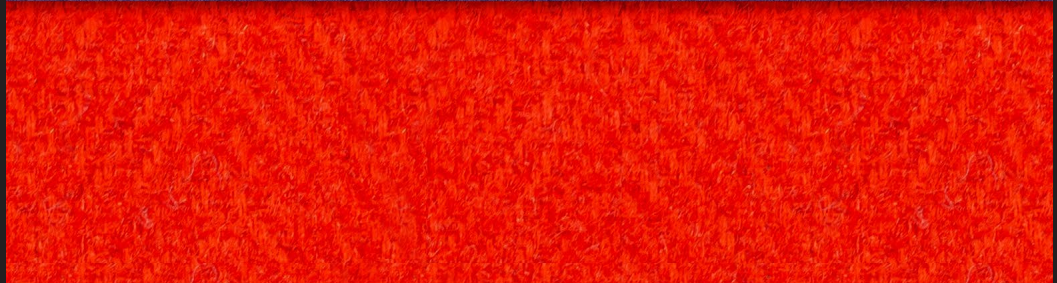
## Z6-3754952 (32)

Blue Herringbone Solid  
550 gm / 19.5 oz  
81% Wool / 13% Mohair / 6% Nylon



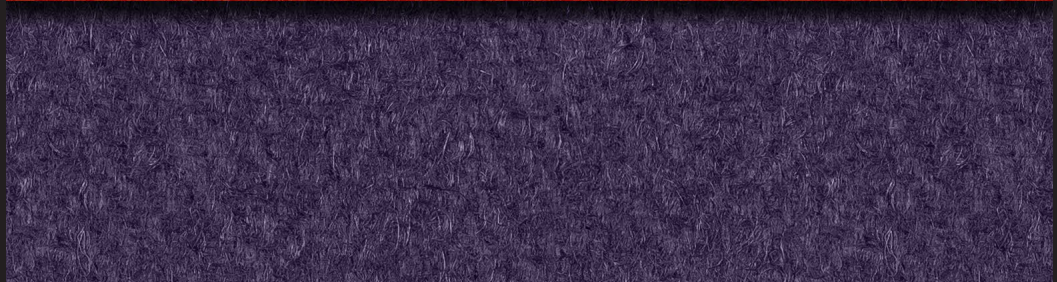
## Z6-3754953 (33)

Red Herringbone Solid  
550 gm / 19.5 oz  
81% Wool / 13% Mohair / 6% Nylon



## Z6-3754954 (34)

Purple Herringbone Solid  
550 gm / 19.5 oz  
81% Wool / 13% Mohair / 6% Nylon





# OUTERWEAR

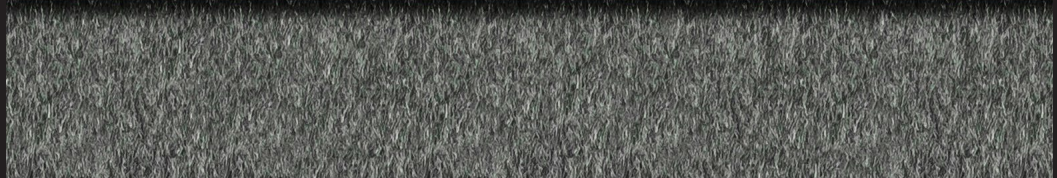
**K1-3754955 (35)**

Camel Solid  
400 gm / 14 oz  
100% Wool



**K1-3754956 (36)**

Grey Solid  
400 gm / 14 oz  
100% Wool



**K1-3754957 (37)**

Charcoal Solid  
400 gm / 14 oz  
100% Wool



**K1-3754958 (38)**

Blue Solid  
400 gm / 14 oz  
100% Wool



**K1-3754959 (39)**

Navy Solid  
400 gm / 14 oz  
100% Wool



**K1-3754960 (40)**

Black Solid  
400 gm / 14 oz  
100% Wool



**K3-3754961 (41)**

Camel Solid  
400 gm / 14 oz  
50% Wool / 50% Angora



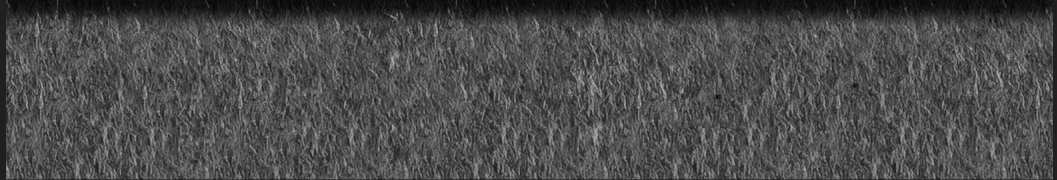
**K3-3754962 (42)**

Vicuna Solid  
400 gm / 14 oz  
50% Wool / 50% Angora



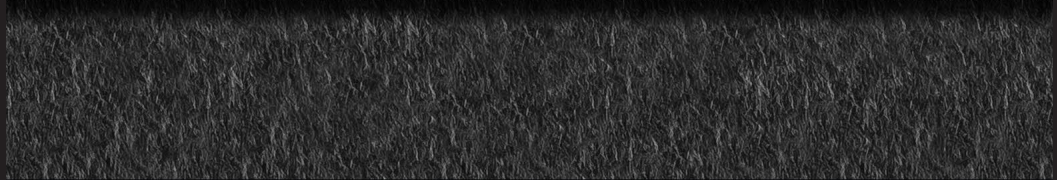
**K3-3754963 (43)**

Grey Solid  
400 gm / 14 oz  
50% Wool / 50% Angora



**K3-3754964 (44)**

Charcoal Solid  
400 gm / 14 oz  
50% Wool / 50% Angora



**K3-3754965 (45)**

Navy Solid  
400 gm / 14 oz  
50% Wool / 50% Angora



**K3-3754966 (46)**

Black Solid  
400 gm / 14 oz  
50% Wool / 50% Angora

