

NOOR  
BANK نور  
بنك



نور بنك  
Noor Bank



# REPORT OF NOOR BANK METRO STAION NANO MATERIAL SAMPLES

UNDER SUPERVISION OF :

RTA - METRO AUTHORITY

SERCO SERVICE COMPANY



## REPORT CONTENTS:

- INTRODUCTION
- DOCUMENTS & APPROVALS
- SURFACES
  - I. Alluminum Cladding Restoration & Protection
  - II. Rubber Joints Restoration & Protection
  - III. External Glass Nano-Protection
  - IV. Internal Composite marble Cleaning & Nano Protection.
- DAB FLOW NANO MATERIALS BAR CODES & REFERENCES.
- PHOTOS & VIDEOS.



Through this report we would like to present our results for the Noor Bank Metro station Nano sampling. You will find in this report all determined area & surfaces which were made by our company nano-materials, with all materials consumption we were used during making the samples. All upcoming photos had been take from real site and real surfaces, It will be from our pleasure to provide any additional technical information of any material we used on this sample if needed.

INFO@DABFLOW.CO

# WORKING AT HEIGHT RISK ASSESSMENT

Permit to Work No.

N1811-0626

PART 1: GENERAL DETAILS

Company/Office

DAS FLOW For Handicrafts

Date

Schedule of Work

From

To

Type of Work

☐ Maintenance

Date (dd/mm/yyyy)

13 Nov 2010

13 Dec 2010

Working Time

8:00 AM - 4:00 PM

4:00 PM - 8:00 PM

☐ Inspection

☐ Testing

☐ Installation

☐ Training

☐ Others (Specify)

☐ Samples using materials

Supply different type of materials in different type of surfaces.

Work Location

☒ Inside

☐ Line

☐ Elevated Bound

☐ Non-In

☐ Unside

☐ Check Bound

From (Start) To (Finish)

NOOR BANK

☐ Reinforced Bound

To (Start) To (Finish)

NOOR BANK

☐ Steel All Bound

Building No.

NOOR BANK

Room No.

Other Area (Specify)

100 CM of stainless steel handrail metro line - Outdoor handrail

## PART 2: RISK ASSESSMENT SUMMARY

Please Tick as applicable

	YES	NO	NA	Comments
The need for Working at Height	<input checked="" type="checkbox"/>	<input type="checkbox"/>	<input type="checkbox"/>	
Can any hazardous task or other equipment be used ground level?	<input type="checkbox"/>	<input checked="" type="checkbox"/>	<input type="checkbox"/>	
Full Protection	<input type="checkbox"/>	<input checked="" type="checkbox"/>	<input type="checkbox"/>	
Does the work location have permanent guard rail	<input checked="" type="checkbox"/>	<input type="checkbox"/>	<input type="checkbox"/>	
Can work equipment be used (over platform and access etc)	<input type="checkbox"/>	<input checked="" type="checkbox"/>	<input type="checkbox"/>	
Maintaining the consequences of falls	<input type="checkbox"/>	<input checked="" type="checkbox"/>	<input type="checkbox"/>	
Are safety nets / falls arrested to be used? (if so, details)	<input type="checkbox"/>	<input checked="" type="checkbox"/>	<input type="checkbox"/>	
Are the people responsible for setting up safety nets to do so and understand the limitations?	<input type="checkbox"/>	<input checked="" type="checkbox"/>	<input type="checkbox"/>	
Other Additional Measures	<input type="checkbox"/>	<input checked="" type="checkbox"/>	<input type="checkbox"/>	
Are all people connected to the working at height	<input checked="" type="checkbox"/>	<input type="checkbox"/>	<input type="checkbox"/>	
Is the equipment to be used regularly inspected and well maintained?	<input checked="" type="checkbox"/>	<input type="checkbox"/>	<input type="checkbox"/>	
Will the work be supervised to ensure that it is done as planned (if so, details)	<input checked="" type="checkbox"/>	<input type="checkbox"/>	<input type="checkbox"/>	
Flagged surfaces	<input checked="" type="checkbox"/>	<input type="checkbox"/>	<input type="checkbox"/>	Station platform aluminium cladding of metro station
Other Considerations	<input type="checkbox"/>	<input checked="" type="checkbox"/>	<input type="checkbox"/>	
Is the activity dependent on weather condition? (if so, details)	<input type="checkbox"/>	<input checked="" type="checkbox"/>	<input type="checkbox"/>	No direct sun light, no clear storm
Are there any duties or out to on the roof? (if so, describe any hazard from falling, etc)	<input type="checkbox"/>	<input checked="" type="checkbox"/>	<input type="checkbox"/>	
Are there any existing over and services going and or into the ground (length, width)	<input checked="" type="checkbox"/>	<input type="checkbox"/>	<input type="checkbox"/>	
Is personal protective gear required? (if so, details)	<input checked="" type="checkbox"/>	<input type="checkbox"/>	<input type="checkbox"/>	
Is there a means of control in emergency? (if so, details)	<input checked="" type="checkbox"/>	<input type="checkbox"/>	<input type="checkbox"/>	
Other precautions required	<input type="checkbox"/>	<input checked="" type="checkbox"/>	<input type="checkbox"/>	See Lanyard, and other equipment to be used
All operations should be not taught for at least 1 hr after installation	<input type="checkbox"/>	<input checked="" type="checkbox"/>	<input type="checkbox"/>	
Other Safety equipment required	<input type="checkbox"/>	<input checked="" type="checkbox"/>	<input type="checkbox"/>	
1 Fire extinguisher is emergency because there are no fire	<input type="checkbox"/>	<input checked="" type="checkbox"/>	<input type="checkbox"/>	

## PART 3: Competency for Work Planner

Is the person undertaking the assessment 1. Is it to verify that the person is competent to perform the task? 2. Is it to verify that the person is competent to perform the task? 3. Is it to verify that the person is competent to perform the task?

Work Planner: Eng. Mostafa Abdul Ansin

Position: Technical Operation Manager

Contact No: +97155776625

Email Address: m.ansin@dasflow.co

Signature: \_\_\_\_\_

Senco Dubai Metro  
Working At Height Risk Assessment

1 / 2

Green Incentive

30/07/2012  
DM001-ENM-ALL-XX-000564 A2

DAB FLOW NANOTECHNOLOGY - UG  
Friedrichstraße 191 Berlin, 10117, Germany  
+49 30 20659- 408



## CERTIFICATES



# SURFACES & RESULTS

## ALLUMINUM CLADDING

- Nano Surface Cleaning
- Nano Surface Color Restoration
- Nano Surface Liquid & Dust Protection

### Nano Surface Cleaning

This was the first step of aluminium surface nano restoration & protection.

- As a first step we were applying our Dab Flow - Universal 10 cleaning material to the aluminium panels by spraying.
- We used a roll after spraying step to spread the materials and get sure it comes into all pours of panels.
- We left it for 5 min. to react with the surface.
- We polished the surface by using a sponge in a circle movement.
- We rains a clean water to the surface to clean it from materials & any other contaminations.
- We Dry the surface by using the squeeze and clean soft cloth and leave it to complete dry for 5 min.

DAB FLOW PRODUCT	QTY. / PANEL		SURFACE	REPEATED TIME	RESULT
DAB FLOW - UNIVERSAL 10	172	ML.	ALLUMINUM CLADDING	N	E

- *ML. ....Millilitre*
- *Y / N .....Yes / No*
- *B / G / E .....Bad / Good / Excellent*

## Nano Surface Color Restoration

## Nano Surface Liquid & Dust Protection

This was the second step of aluminium surface nano restoration & protection.

- After cleaning & preparation step we start mixing our DAB FLOW - ALU HÜTT with specific ratio [ 5.5 Alu Base to 1 Alu Hardener ] in clean canister.
- We closed the mixed products canister & shake it well and left it for 10 min to react together.
- We Put the mixture into plastic container & start using the roll to mix it with product and apply it to the aluminium surface in vertical way.
- We left the surface dry naturally after application.
- We reached the colour restoration of gold aluminium cladding panels immediately after applying our Dab Flow - Alu Hutt.
- We reached the full surface nano protection after 7 days of our application.

*# Full edge bonding and cross linking reach after 7 days of application.*

DAB FLOW PRODUCT	QTY. / PANEL		SURFACE	REPEATED TIME	RESULT
DAB FLOW - ALU HÜTT	75	ML.	ALLUMINUM CLADDING	N	E

- *ML. ....Millilitre*
- *Y / N .....Yes / No*
- *B / G / E .....Bad / Good / Excellent*

## RUBBER JOINTS RESTORATION & PROTECTION

- Nano Surface Cleaning
- Nano Surface Color Restoration
- Nano Surface Liquid & Dust Protection

### Nano Surface Cleaning

This was the second scope of work on our sampling mission, It was cleaning, restoration & nano protection of rubber joints.

- As a first step we were applying our Dab Flow - GBX nano cleaning material to the rubber joints and this by spraying processing.
- We used a brush after spraying step to spread the materials and get sure it comes into all pours of rubber surface.
- We left it for 2 min. to react with the surface.
- We rubbed the surface by using a hard sponge in a horizontal movement.
- We rains a clean water to the surface to clean it from materials & any other contaminations by using the water pressure spray gun.
- We Dry the surface by using the clean soft cloth and leave it to complete dry for 15 min.

DAB FLOW PRODUCT	QTY. / LM		SURFACE	REPEATED TIME	RESULT
DAB FLOW - GBX	15	MI.	RUBBER JOINTS	N	E

- LM. ....Linier Meter
- Y / N .....Yes / No
- B / G / E .....Bad / Good / Excellent

# Some of rubber joints we repeated more than once to reach the excellent result by removing all types of contamination which were found stacked on the surface.

## Nano Surface Color Restoration

## Nano Surface Liquid & Dust Protection

This was the second step of rubber surface nano restoration & protection.

- After cleaning & preparation step we start mixing our DAB FLOW - ALU KÜN with specific ratio [ 5.5 Alu Base to 1 Alu Hardener ] in clean canister.
- We closed the mixed products canister & shake it well and left it for 10 min to react together.
- We Put the mixture into glass container & start using the brush to mix it with product and apply it to the rubber joints surface in horizontal way.
- We left the surface dry naturally after application.
- We reached the colour restoration of black rubber joints surfaces immediately after applying our Dab Flow - Alu Kun.
- We reached the full surface nano protection after 7 days of our application.

DAB FLOW PRODUCT	QTY. / LM		SURFACE	REPEATED TIME	RESULT
DAB FLOW - ALU KÜN	8	ML.	RUBBER JOINTS	Y	E

- *ML. ....Millilitre*
- *Y / N .....Yes / No*
- *B / G / E .....Bad / Good / Excellent*



## EXTERNAL GLASS NANO CLEANING & PROTECTION

- Nano Surface Cleaning
- Nano Surface Liquid & Dust Protection

### Nano Surface Cleaning

This was the third scope of work on our sampling mission, It was cleaning & nano protection for external glass panels.

- As a first step we were applying our Dab Flow - KK nano cleaning material to external glass panels, by using a soft sponge to spread and cover the nano product in all glass area.
- We left it for 15 min. to react with the surface.
- We rubbed the surface by using a soft sponge in a circle movement during we remove the product by clean water pressure.
- We rains a clean water to the surface to clean it from any small particles & any other contaminations by using the water pressure spray gun.
- We Dry the surface by using the squeeze and left it to complete dry for 10 min.

DAB FLOW PRODUCT	QTY. / ML		SURFACE	REPEATED TIME	RESULT
DAB FLOW - KK	60	ML.	GLASS PANELS	N	E

- *ML. ....Millilitre*
- *Y / N .....Yes / No*
- *B / G / E .....Bad / Good / Excellent*

## Nano Surface Liquid & Dust Protection

This was the second step of glass nano protection.

- After cleaning & preparation step we start using our DAB FLOW - QK
- We sprayed the nano product by using normal spray pump & start rubbed on circle movement by using clean dry cotton till it comes into glass purse and dry by it self.
- We left the surface for full dry after application.
- We reached the Hydrophobic self cleaning concept for glass surface after 30 min. of our nano product application.
- We reached the full surface hydrophobic and Oleo phobic nano protection after 7 days of our application.

*# Full edge bonding and cross linking reach after 30 days of application.*

*# Our nano materials start raise the efficiency gradually by it self till it reach the maximum efficiency after 30 days of application.*

DAB FLOW PRODUCT	QTY. / LM		SURFACE	REPEATED TIME	RESULT
DAB FLOW - QK	40	ML.	RUBBER JOINTS	N	E

- *ML. ....Millilitre*
- *N / Y .....Yes / No*
- *B / G / E .....Bad / Good / Excellent*

## INTERNAL COMPOSITE MARBLE FLOORING CLEANING & PROTECTION

- Nano Surface Cleaning
- Nano Surface Liquid & Dust Protection

### Nano Surface Cleaning

This was the fourth scope of work on our sampling mission, It was cleaning & nano protection for internal composite marble flooring.

- As a first step we were applying our Dab Flow - RE HO2 nano cleaning material to internal composite marble flooring tiles , and this by using a normal spray pump and hard sponge to spread and cover the nano product in all flooring area.
- We left it for 2 min. to react with the surface.
- We rubbed the surface by using a hard sponge & brush with drill.
- Circle movement it was the best way to remove the contamination and dirt also we used a clean water to remove the product during the cleaning process.
- We rains a clean water to the surface to clean it from any small particles & any other contaminations.
- We Dry the surface by using the clean cotton cloth and left it to complete dry for 15 min.

DAB FLOW PRODUCT	QTY. / ML		SURFACE	REPEATED TIME	RESULT
DAB FLOW - RE HO2	180	ML.	COMPOSITE MARBLE	Y	G

- *ML. ....Millilitre*
- *Y / N .....Yes / No*
- *B / G / E .....Bad / Good / Excellent*

*# Some of stains we repeated more than twice to reach the good result not the excellent result.*

*#This to remove the yellow stain which were found stacked on the surface.*

## Nano Surface Color Restoration

## Nano Surface Liquid & Dust Protection

This was the second step of composite marble flooring surface nano restoration & protection.

- After cleaning & preparation step we start mixing our DAB FLOW - ALU glanz with specific ratio [ 5.5 Alu Base to 1 Alu Hardener ] in clean canister.
- We closed the mixed products canister & shake it well and left it for 10 min to react together.
- We Put the mixture into glass container & start using the clean sponge to mix it with product and apply it to the marble surface in horizontal & vertical way.
- We left the surface dry naturally after application.
- We reached the colour restoration of blue marble surface immediately after applying our Dab Flow -glanz.
- We reached the full surface nano protection after 7 days of our application.

DAB FLOW PRODUCT	QTY. / LM		SURFACE	REPEATED TIME	RESULT
DAB FLOW - ALU glanz	35	ML.	COMPOSITE MARBLE	N	E

- *ML. ....Millilitre*
- *Y / N .....Yes / No*
- *B / G / E .....Bad / Good / Excellent*

*# We can use the spray gun with minimum air pressure to apply the nano product into the marble surface. This way of application will give a fast & better result for marble flooring.*

# BAR CODES & REFERANCES

DAB FLOW - UNIVERSAL 10

Cleaning & preparation Nano-material

**NON-FLAMMABLE**



DAB FLOW - ALU HÜTT

Colour restoration & Protection Nano-material



DAB FLOW - GBX

Cleaning & preparation Nano-material

**NON-FLAMMABLE**



DAB FLOW - ALU KÜN

Colour restoration & Protection Nano-material





DAB FLOW - KK

Cleaning &amp; preparation Nano-material

**NON-FLAMMABLE**

DAB FLOW - QK

Colour restoration &amp; Protection Nano-material



DAB FLOW - RE HO2

Cleaning &amp; preparation Nano-material

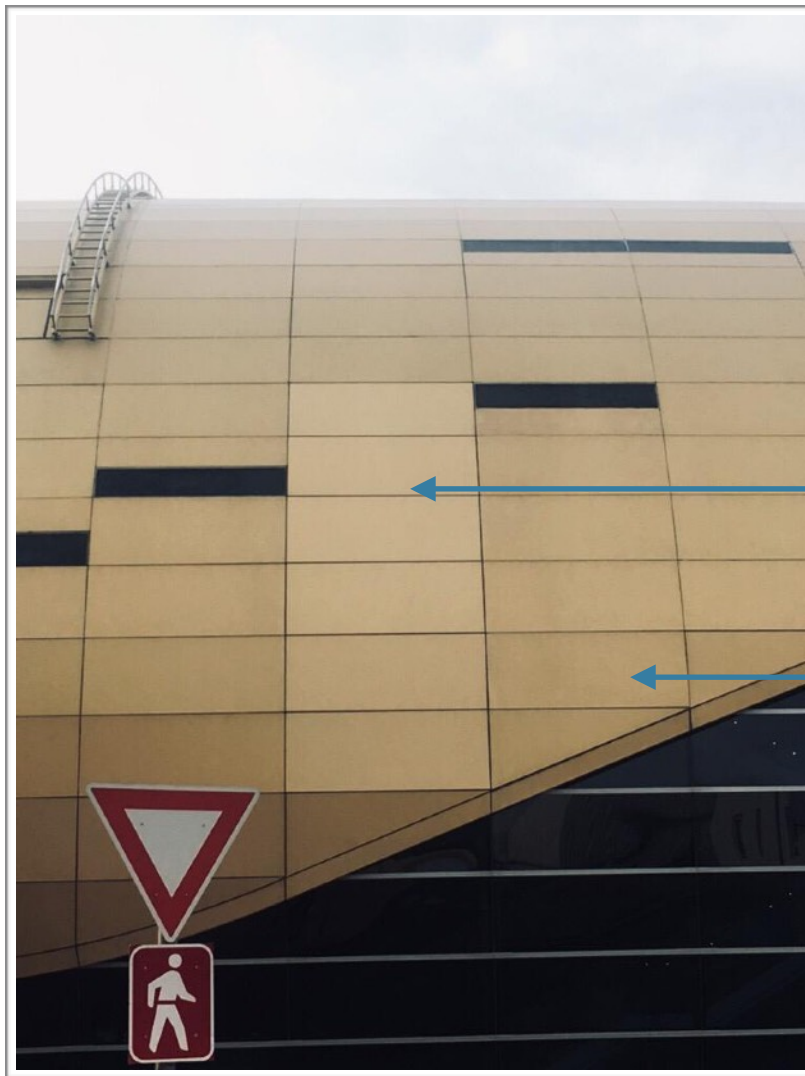


DAB FLOW - ALU GLANZ

Colour restoration &amp; Protection Nano-material

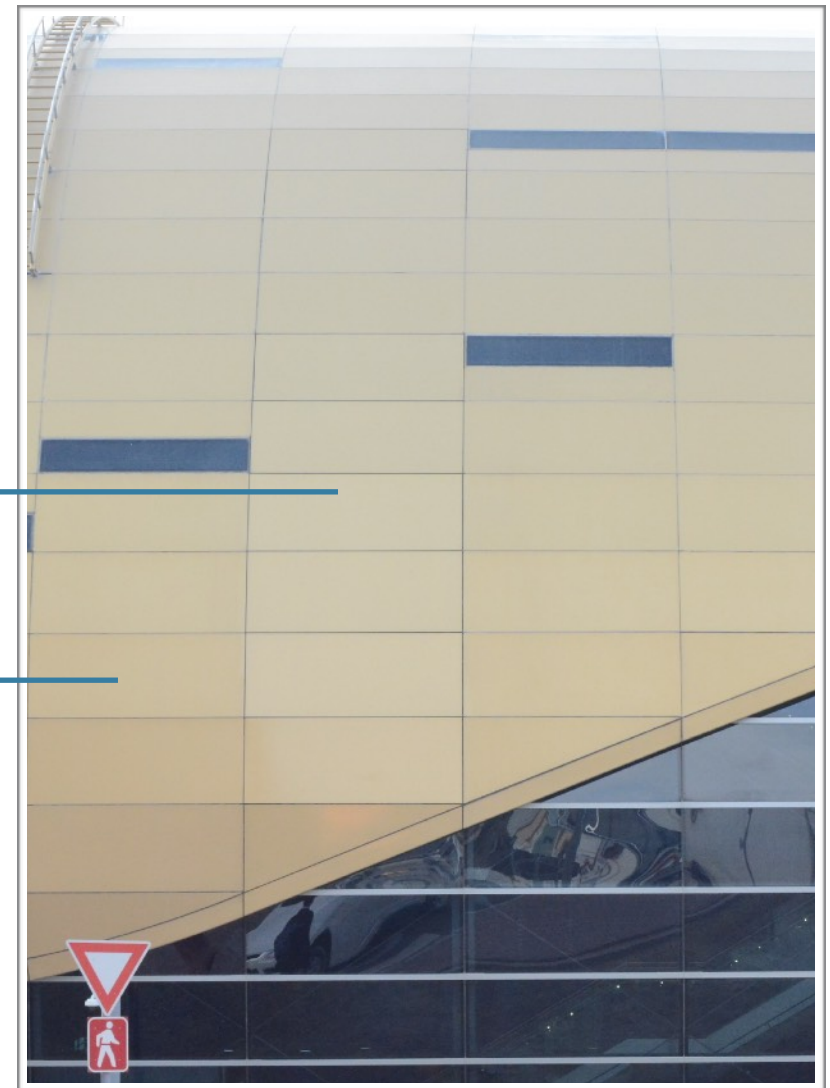


# PHOTOS



*Aluminium Panels  
after [ nano cleaning,  
Colour restoration &  
Protection ].*

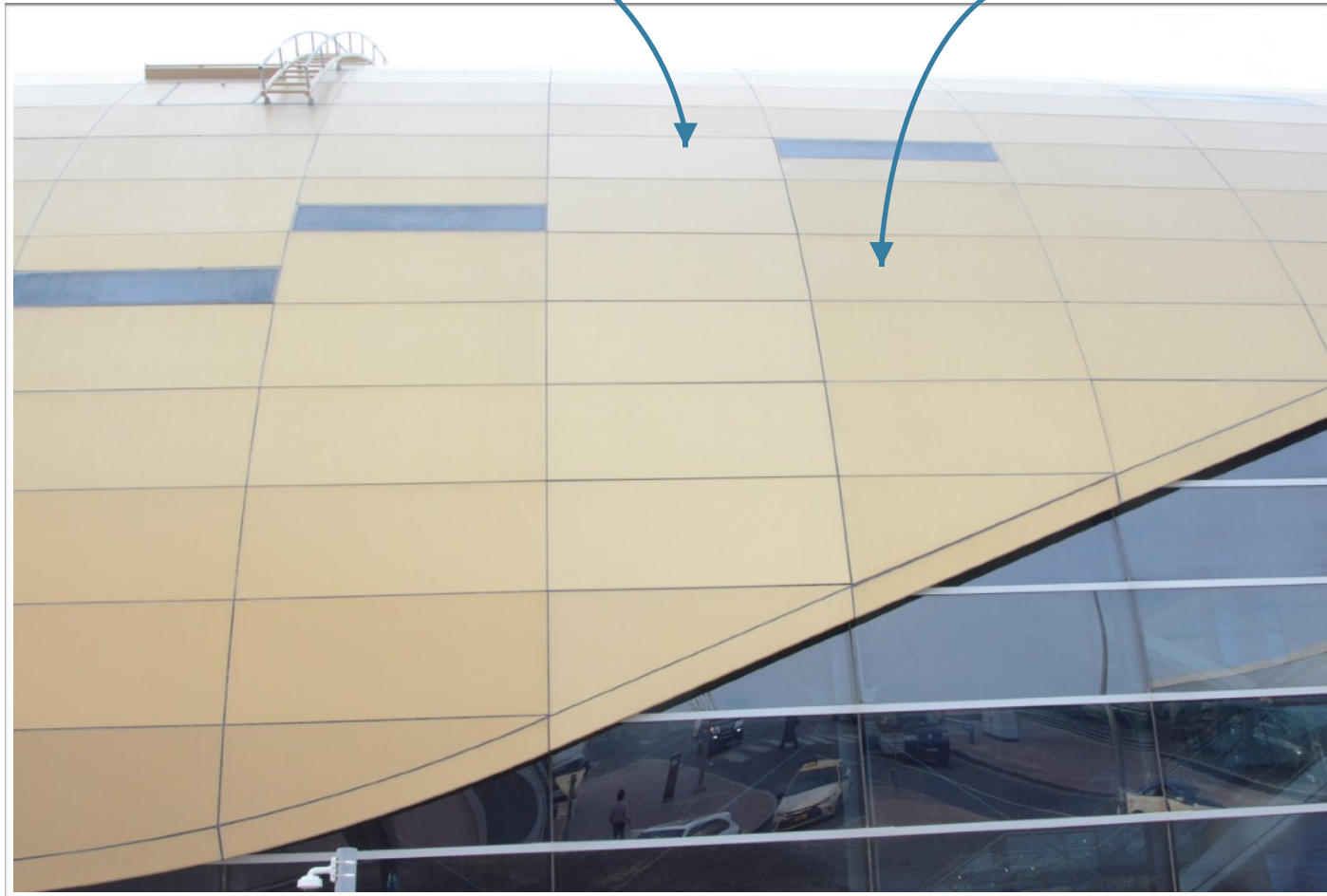
*Aluminium Panels  
Before using Nano-  
materials.*



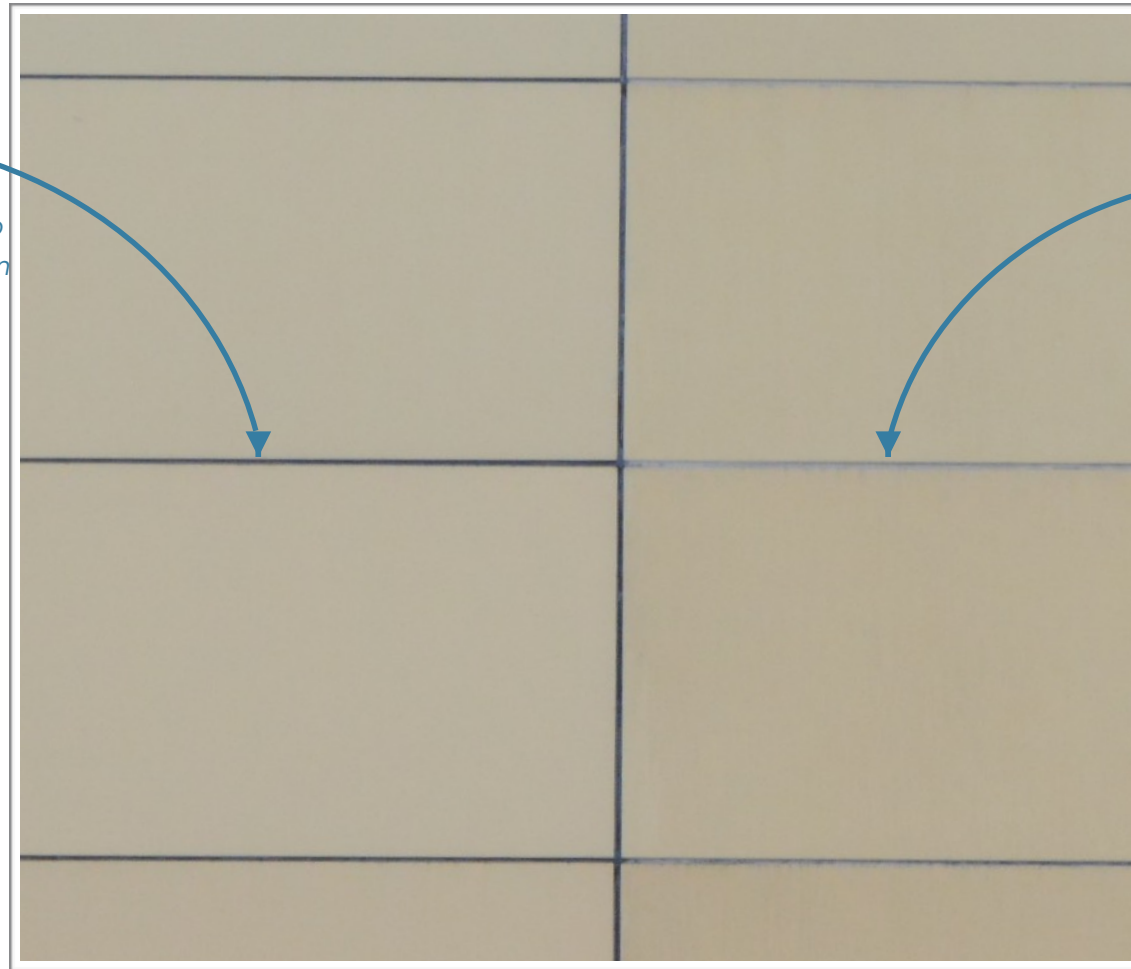
DAB FLOW NANOTECHNOLOGY - UG  
Friedrichstraße 191 Berlin, 10117, Germany  
+49 30 20659- 408

*Aluminium Panels after  
[ nano cleaning, Colour  
restoration & Protection ].*

*Aluminium Panels Before  
using Nano-materials.*

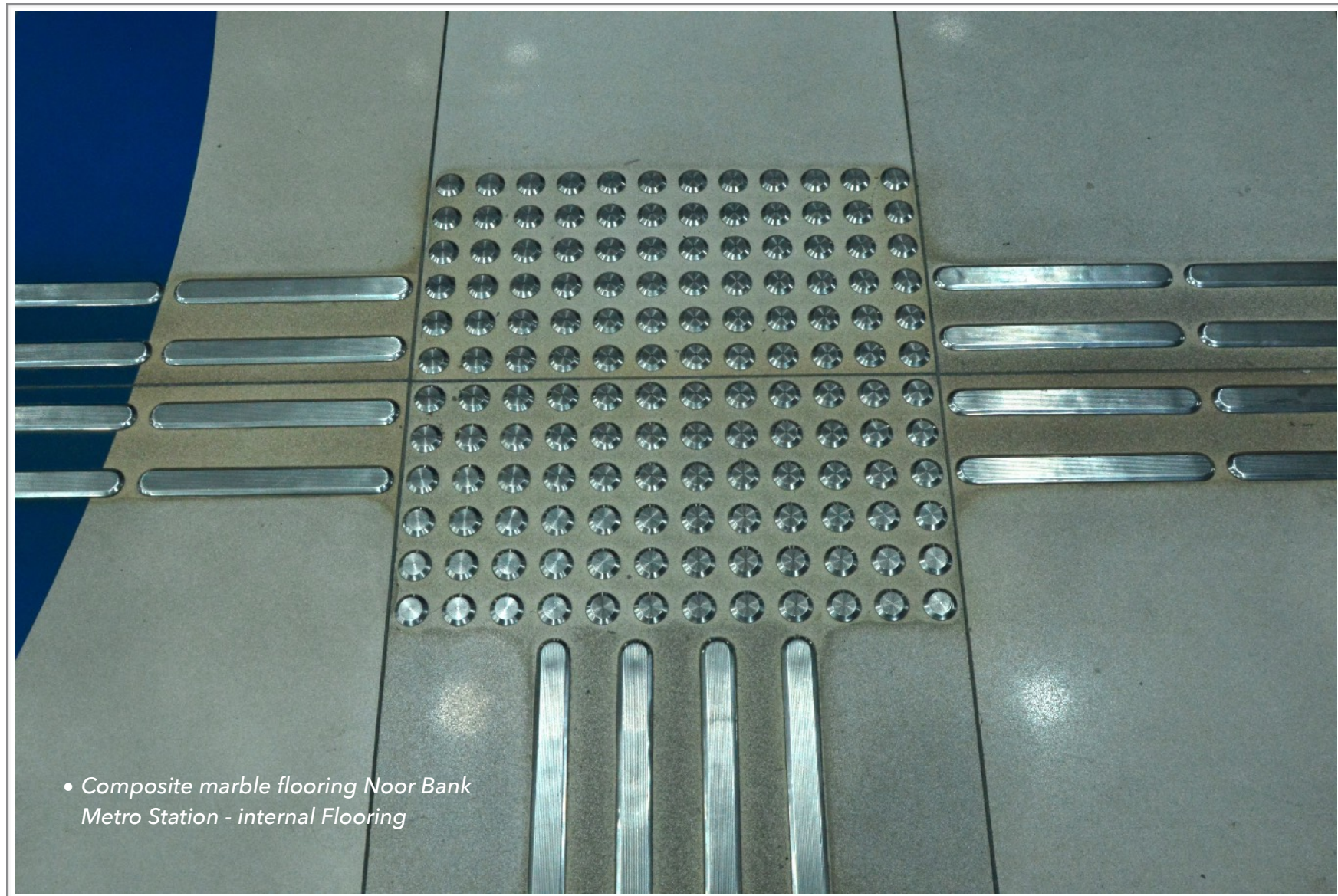


*Rubber groves after [ nano  
cleaning, Colour restoration  
& Protection ].*

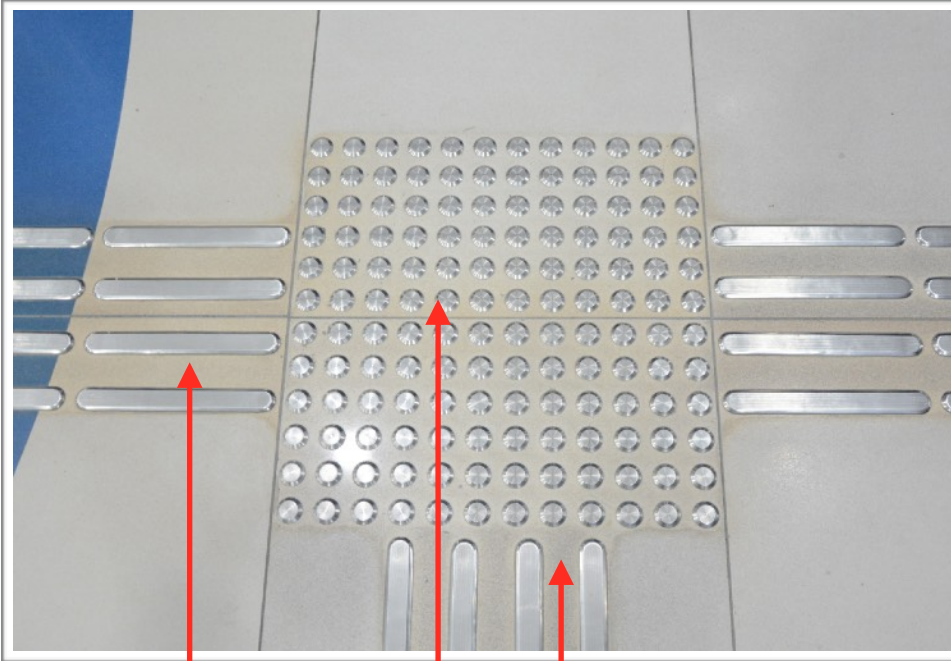


*Rubber groves Before  
using Nano-materials.*

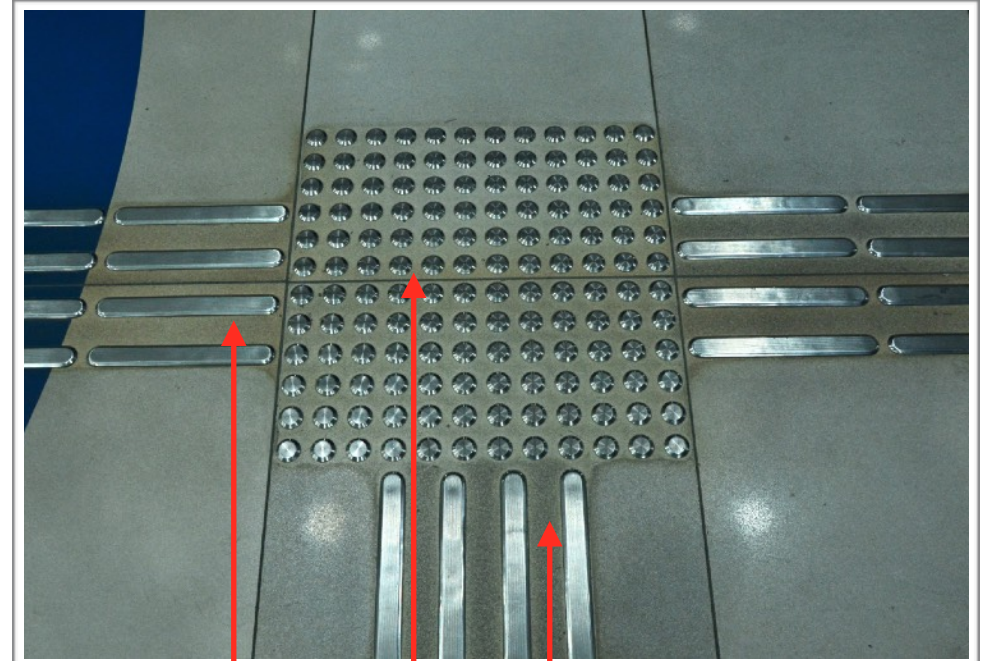








*Composite marble flooring after using  
Cleaning & Protection Nano-materials.*



*Composite marble flooring  
Before using Nano-materials.*



*Glass Panel after using Cleaning & Protection Nano-materials.*



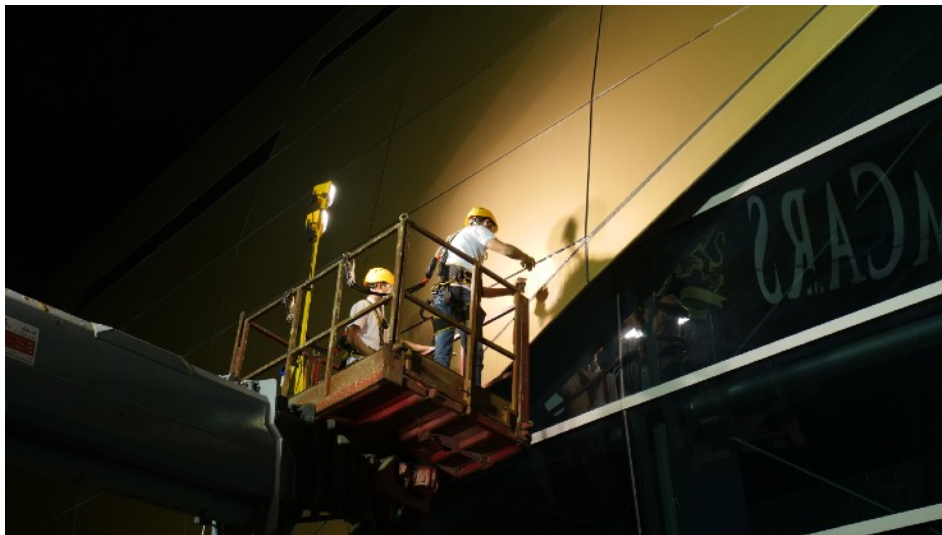
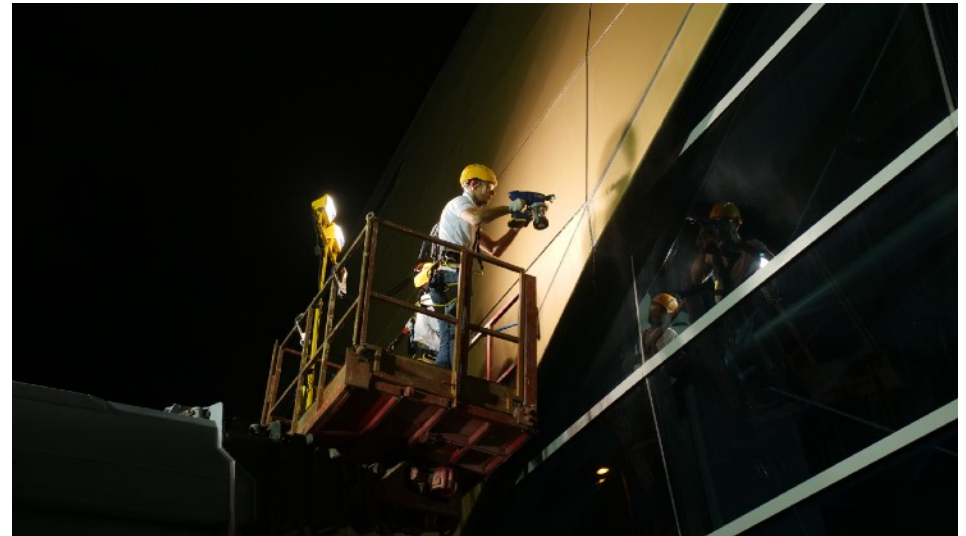
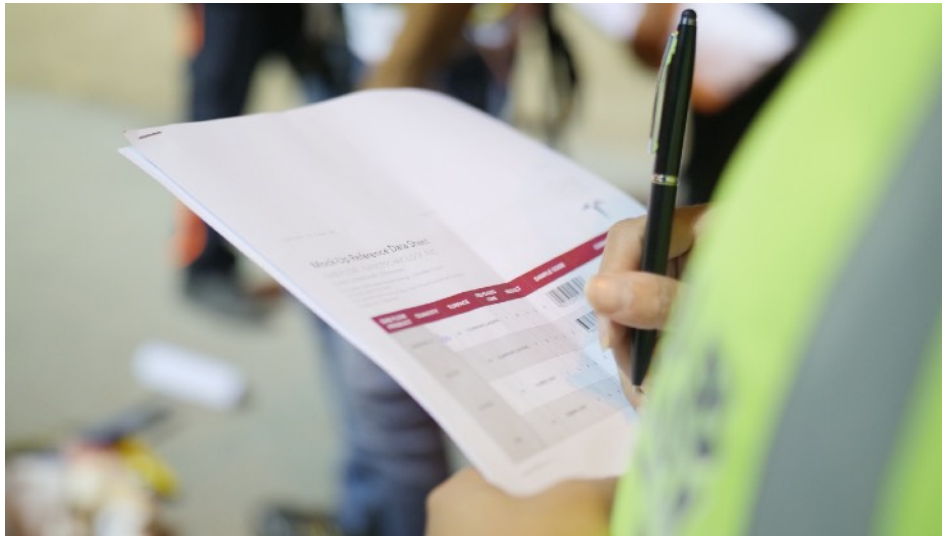
*Glass Panel Nano-sample tracking bar code.*













## VIDEOS

ALLUMINIUM CLADDING & RUBBER GROVES NANO SAMPLE VIDEO:

<https://www.dropbox.com/s/q3vzx57fn6aocak/%2Bdablfow%2By.mp4?dl=0>

COMPOSITE MARBLE INTERNAL FLOORING VIDEO :

[https://www.dropbox.com/s/hnbg hx7nkc3dygg/DSC\\_8642.MOV?dl=0](https://www.dropbox.com/s/hnbg hx7nkc3dygg/DSC_8642.MOV?dl=0)

Thank You And Hope We Fit Your Standard Requirements.

