



Wickenburg Gem & Mineral Society, Inc.

P.O. Box 20375, Wickenburg, Arizona, 85358

E-Mail – wgmcommunity@gmail.com

www.wickenburggms.org

The purpose of this organization shall be to educate and to provide fellowship for people interested in rocks and minerals; to foster love and appreciation of minerals, rocks, gems, and the Earth. Membership shall be open to all interested people.

It's getting hot as we head into Summer, but the weather in Utah will remain comfortable for a while yet. If you are looking for a collecting site and camping trip, Topaz Mountain is a destination to give serious consideration this time of year.

TOPAZ MOUNTAIN

Topaz Mountain is in the southern end of the Thomas Range. The Topaz Mountain Amphitheater (aka Topaz Valley or 'the cove') is an area that has been set aside by the BLM, as a rockhounding area. It is a readily accessible and rewarding area, and you may camp here, although there are NO facilities. [Map to right.](#)

The Thomas Range is composed of at least 5 rhyolite lava flows (topaz rhyolite), that erupted 6-7 million years ago. The rock is light gray, and has been hydrothermally altered so that there are cavities and "weak" areas, wherein minerals have formed — including sherry-colored topaz crystals. These crystals are *pneumatolitic*, meaning that they formed out of volcanic gases, that permeated the rock.

Minerals that occur there include: topaz, bixbyite, red beryl, pseudobrookite, hematite, garnet, opal.

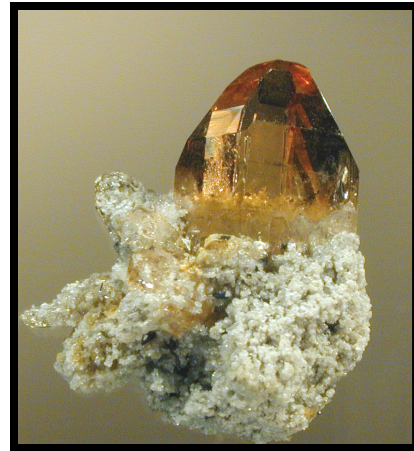
The topaz is usually sherry-colored when they come out of the rock, but they quickly fade to clear, when exposed to sunlight. Many crystals can be found on the surface and by screening the sand and dirt of the washes. These will mostly be clear.

You may also do hard-rock collecting on the hillsides around "the cove". You will need a heavy hammer (sledge probably best), chisels, screw driver (for more gently working rock around crystals), and toilet paper (for wrapping). Look for areas that look altered, honeycombed, or with cavities.

It is a fairly steep hike up the slope to collecting areas. See the map on page 3 for productive collecting areas. *...continued on page 3*

WELCOME NEW MEMBERS !!

Bill Maida
Raymond Nott
Steve Thompson
Brian Cole



Sherry-colored topaz crystal from Topaz Mountain, Utah
Photo by Stan Celestian

INSIDE THIS ISSUE

Topaz Mountain, New Members,	1
Minutes; Egg Cartons	2
Topaz Mountain continued	3
Club info, Upcoming Gem & Mineral Shows	4
Topaz (Orthorhombic) cut and fold	5
Minerals in Our Lives: What is in an Alkaline Battery	6

BE SURE TO CHECK OUT THE CLUB WEBSITE!!

Meeting Minutes — April 11, 2014

The meeting was called to order by President, Craig Jones. There were 25 in attendance. New member is Bill Maipa.

Minutes of the March 14 meeting were read and approved with a correction saying "all interested persons will be able to use the polisher/grinder".

The treasurer's report was approved as read.

Craig thanked Dale for leading the field trips during the year and will ask the Anthem rock and gem President if they would like to join us on field trips once in a while.

Unfinished Business: Steve Hill reported that the web site is up and running and is turning it over to Dale to maintain.

New Business: Karen Coulter talked about Congress Days October 5th & 6th. They would like us to have a booth explaining the purpose of our club, etc. Bill Coulter will take anyone interested to see petroglyphs and crested cactus on Wednesday April 16 at 10am.

Debbie reported that the meeting place and day will remain the same for 2014/15. She might be able to change it for 2015/16.

Dale needs approximately \$200 for additional signs for the rock walk at the Congress elementary school. A motion was made and approved.

Thirty-one people went on the field trip to the Williams Ranch in March. The night black light field trip was discussed and suggested that it be an annual trip.

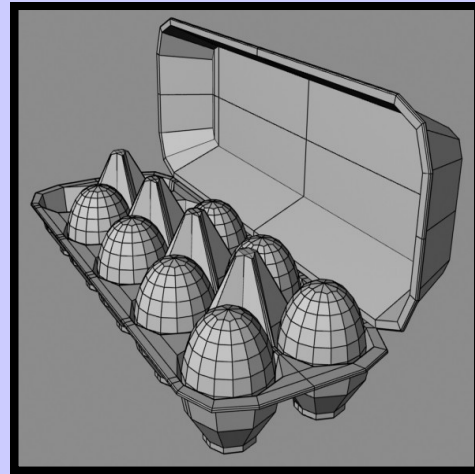
Marty Hagen presented a DVD on "Beginning Cabochon Making".

Show and Tell: Craig Jones won the prize.

Door Prizes: Efrosine Richards, Roger Schlaeppl, Delores Cochran, Steve Hill, and Debbie Keiser.

Sue Jones, Secretary

Opuntia basilaris
are lighting up the
desert with their
neon pink
blossoms!
Photo by Susan
Celestian



***In marble walls as white as milk,
Lined with a skin as soft as silk,
Within a fountain crystal clear,
A golden apple doth appear,
No doors there are to this stronghold,
Yet things break in and steal the gold.***

Traditional nursery rhyme

The Wickenburg Gem and Mineral Society supports the Earth Science Museum (ESM), a grass-roots effort to re-establish an Earth Science Museum in the Phoenix area. A major part of the current ESM activities is the Outreach Program to schools, spearheaded by Mardy Zimmerman. And, part of their outreach is the Egg Carton Program, supported by the Leaverites. For \$1, children may choose 12 rocks, minerals, or fossils (labeled) — and Mardy maintains a stash of many different choices. Perhaps, you have seen the booth at the annual Flagg Gem and Mineral Show, as Mesa Community College.

According to Mardy, they sell about 2000 egg cartons a year, so are in continual need of empty egg cartons.

Eat your eggs, start the day off right, consume those healthy orbs — and save the empty carton. If you bring them to a meeting, Stan & Sue Celestian will see that Mardy gets them.

THANKS!



The New Mexico Bureau of Geology and Mineral Resources has a great publication, called *Lite Geology*. It is free, and available only in .pdf format. If you'd like to subscribe (email notices when a new issue is available), or see back issues, go to

<http://geoinfo.nmt.edu/publications/periodicals/litegeology/current.html>

All photos by Stan Celestian

From Nephi, Utah, travel 33 miles southwest on State Highway 132 to Lynndyl. Turn south on U.S. Highway 6 and drive for approximately 5 miles. Turn west on the Brush Wellman road and travel 38 miles until you reach the Topaz Mountain sign. Turn north on the dirt road and drive about 2 miles, then turn west toward Topaz Mountain.

GPS coordinates: N 39° 42; 34", W 113° 6'12" or Search for Topaz Valley in Google Earth

Topaz crystallizes in the Orthorhombic System:

- ◆ Crystals will be short or long (all three axes are different lengths)
 - ◆ Axes meet at right angles to each other
 - ◆ Diamond-shaped cross-sections common

SEE PAGE 5 for a CRYSTAL MODEL cut & fold



Photo by Stan Celestian



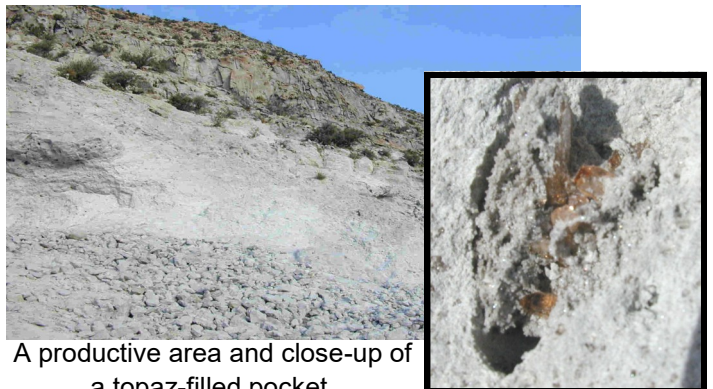
Highway from Delta to Topaz Mountain



Dirt road into Topaz Valley



Topaz Mountain Amphitheater
aka Topaz Valley or "the cove"



A productive area and close-up of a topaz-filled pocket.

Officers and Chairpersons

President: Craig Jones208-523-9355
Vice President: Martin Hagan 602-469-7770
Secretary: Sue Jones 208-523-9355
Treasurer: Debra Keiser 928-684-1013
Program Director: Dale Keiser 928-684-1013
Publicity: currently open position
Membership: Roma Hagan 602-469-7662
Editor: Susan Celestian 602-361-0739
Field Trip: Dale Keiser & Stan Celestian
Show Chair: Beth Myerson 480-540-2318
Scholarship Chair: Steve Hill 928-533-3825
Historian: Jeanine Brown 928-684-0489

Meetings are held the **2nd Friday** most months at **Coffinger Park banquet room**. Potluck dessert at 6:30 pm. Business meeting at 7:00 pm. **Exceptions: February and December** meetings are held on the **first Friday of the month**. We don't meet in the summer — **no meetings in June, July or August**.

**Membership Dues: \$15.00 Adults per Person
 \$ 5.00 Juniors and Students**

Meeting Dates for 2013/14

Wickenburg: Dec 6, Jan 10, Feb 7, Mar 14, Apr 11, May 9, Sept 12, Oct 10, Nov 7, Dec 12.

Wickenburg field trips are usually the Sunday after the meeting.

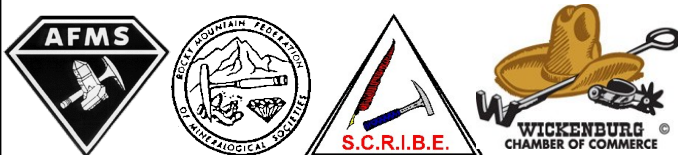
Stanton meets 1st and 3rd Tuesday, Field Trips are 2nd & 4th Tuesday of the month.

NOTES FROM THE EDITOR

Have a geological interest? Been somewhere interesting? Collected some great material? Write a short story (pictures would be great). I take topic suggestions too.
Deadline for the newsletter is the 20th of the month

Mail or Email submissions to:
 Susan Celestian, editor
 6415 N 183rd Av
 Waddell, AZ 85355
 azrocklady@gmail.com

Wickenburg Gem and Mineral Society is a member of the following:



UPCOMING AZ MINERAL SHOWS

May 24-25 - Pinetop, AZ

White Mountain Gem & Mineral Club; Hon-Dah Resort-Casino Convention Center; 777 Hwy 260 (Jct of state routes 73 & 260); Sat 9-6, Sun 10-4

June 6-8 - Flagstaff, AZ

Coconino Lapidary Club; Silver Saddle Outdoor Market; Corner of Route 89N and Silver Saddle Road; Daily 9-4; Free admission

If you are travelling, a good source for out-of-state (or in-state) gem and mineral shows AND clubs is

<http://www.the-vug.com/vug/vugshows.html>

For out-of-the-country shows:

<http://www.mindat.org/eventlist.php>

A good source for a list of Arizona Mineral Clubs and contact information is

http://whitemountain-azrockclub.org/Public_AZ_Clubs_Links.html



Watch out for Rattlesnakes, like this cutie encountered in the Bradshaws this month.

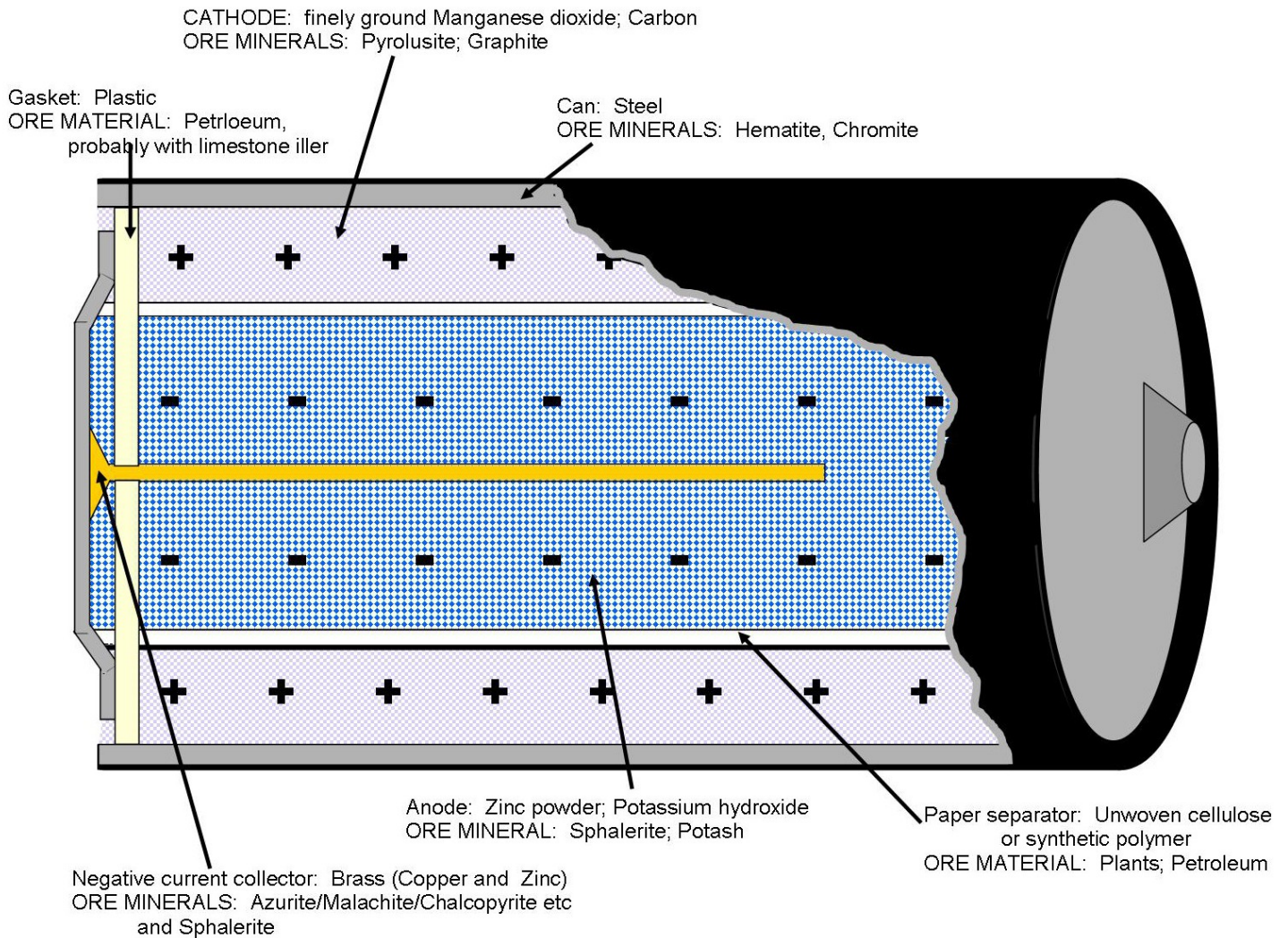
Photo by Susan Celestian

UPCOMING WGMS FIELD TRIPS

If there is somewhere you would like to go or something you would like to collect, tell your officers — or volunteer to lead a trip!

MINERALS IN OUR EVERYDAY LIVES

What is in an Alkaline Battery



Wickenburg Gem and Mineral Society, Inc
6415 N 183rd Av
Waddell, AZ 85355
Editor: Susan Celestian

<https://www.facebook.com/pages/Wickenburg-Gem-and-Mineral-Society/11216602326438>

Like Us on Facebook

