

KLICA News & Information

Kansas Land Improvement Contractors Association
Golf Tournament Edition



Meet KLICA

KLICA Officers

Kent Henderson
President
620-341-2686
kent@zhkent.com

Joe Schletzbaum
President Elect
913-370-0256
jconst@rainbowtel.net

Steve Peter
Vice President
620-562-7389
speter57906@abglobal.net

Jeff Schell
Treasurer
785-562-6816
jefro@bluevalley.net

Clem Karlin
Immediate Past President
785-623-1188
clemkarlin@rocketmail.com

Directors

Brad Raifsnider
James Fenwick
Randy Myers
Scott Lowe
David Orear

Jon L Ungerer
Executive Director
850 U.S. Hwy 77
Marysville, KS 66508
785 221-8697
jungerer@kansaslica.com

www.kansaslica.com
Facebook: Kansas Land
Improvement Contractors
Association KLICA

KLICA Newsletter Editor:
Jon L. Ungerer



President's
Message:
Kent Henderson,
KLICA President

Greetings,

It's early on a Monday. Hoping to stay moving for a while. Last fall it was really dry in Ellis and Trego Counties, where I mostly work. Terrace construction was shut down. We could build waterways in most places and kept working. This spring we got caught up building waterways and moved to Graham County, where there was more moisture and we were able to build terraces. It was fun to get Fuzz's Malsam in some dirt that didn't need ripped. We really like that rig.

We have received over 4" of rain in that field since moving in. I thought about moving out, but with most of the area getting some rain, didn't. I also got sick at the same time and wasn't much help. I had the Hepatitis. Had some liver numbers that were 10 to 20 times what they were supposed to be. I was checked Friday and those numbers are back to normal, so I'm very happy about that.

We are good to go on terraces in Ellis and Trego Counties now, so looking forward to being closer to the house. Feeling better and dirt to move!

Kent



KLICA News & Information July 2023

Contents

• Presidents Column - Kent Henderson	Page 1 (Cover)
• New Members	Page 2
• 3rd Annual Swing Away & Pray Golf Tournament	Page 3 - 6
• Prins/UFG Executive Directors Conference	Page 9
• Endowment Scholarship NCK Technical College	Page 9
• On the Other Side of the Dozer Blade	Page 13
• New Work Codes	Page 15
• Skin Cancer Safety	Page 17
• Preventing Dehydration	Page 19
• Rambling Thoughts of Executive Director	Page 21
• Upcoming Events	Page 24 (Back Cover)

Advertisers

Advanced Drainage Systems Inc. (ADS)	Page 16	Laser Specialists Inc.	Page 7-8
AgriDrain Corporation	Page 18	Modern Ag Inc.	Page 17
Berry Tractor	Page 20	Northern Natural Gas	Page 14
Feyh Farm Seed	Page 18	Precision Intakes, LTD	Page 14
Foley Equipment Co.	Page 12	UFG/Prins	Page 11
Landoll Company, LLC	Page 22		

KLICA Welcomes New Members!

The Kansas Land Improvement Contractors Association welcomes the following new members. Please introduce yourself and welcome them if you have the opportunity and please consider them for your future construction or equipment needs. Thank You for joining KLICA and we hope you find your membership rewarding and worthwhile professionally and personally.

Contractor Members

- | | |
|---|---|
| <ul style="list-style-type: none">• Huber Feed Lot Service
Charles Huber
34060 EE Road
Brownell, KS 67521
785-798-5849
EXG/ODW• Keller Tank Service
Darrell Keller
620 EE Road
Plainville, KS 67663
785-737-8900
kelltank@ruraltel.net
EXG | <ul style="list-style-type: none">• Kyle Niehues Construction, Inc.
Kyle Niehues
1060 M Road
Corning, KS 66417
785-547-6144
kpniehues@gmail.com
DI/EC/EXG/LL/LS/PD/R/SEP/SP/SWU/TW/WM• Rush Services, LLC
Rusty & Amie Rush
525 2nd Road
Ellinwood, KS 67526
620-257-8658
rrush5@gmail.com
DI/EC/EXG/LL/LS/PD/SEP/SP/SWU/TH/TW |
|---|---|

Associate Member

The ACCEL Group
Mike & Jill Lamm/Chandler Lamm
3450 N Rock road #207
Wichita, KS 67226
785-243-0605
mlamm@acceladvantage.com

3rd Annual Swing Away & Pray Golf Tournament Coverage

Thank You to Our Golf Tournament Sponsors

<p><u>Course Sponsor</u> Landoll Company, LLC</p> <p><u>Bar Sponsors</u> ADS Advanced Drainage Systems, Inc. Foley Equipment Co./SiTech-Central Murphy Tractor & Equipment Co.</p> <p><u>Lunch</u> Kramer Oil Co. Inc. Landoll Company, LLC Prinsco Prins/UFG</p>	<p><u>Tee/Green Hole Sponsors</u> ADS Advanced Drainage Systems, Inc. Berry Tractor & Equipment Co. HeavyQuip of Kansas J&J Drainage Products Co. (2 holes) Landmark Implement, Inc. Landoll Company, LLC Marketing Angle Modern Ag Inc. Precision Intakes, LTD Prins/UFG RoadBuilders Machinery & Supply</p>
---	--

Golfer goody bags were provided by Precision Intakes, LTD.

A special Thank You also goes to Idntiteez, Marysville, Kansas for providing the sponsor signs. Idntiteez is our go to for KLICA clothing. We also appreciate Leslie and Holly Holthaus who drove our refreshment cart, ensuring all our golfers stayed hydrated and refreshed throughout the day.

The support of all those listed above helped make the tournament possible and enjoyable for all.

Please be sure to express your appreciation to them and consider them for your future business or personal needs.



Teams Participating in our Golf Tournament

- Berry Tractor & Equipment Co.
- Foley Equipment/ Co/SiTech Central Team 1
- Foley Equipment Co./SiTech Central Team 2
- Foley Equipment Co./SiTech Central Team 3
- Landmark Implement
- Landoll Company, LLC Team 1
- Landoll Company, LLC Team 2
- Marketing Angle
- Modern Ag. Inc.
- Prins Insurance/UFG
- Roadbuilders Machinery & Supply, Inc.
- Schell Farm & Construction, Inc.
- Team Horse Soldier
- The Leftovers



Three of our Landmark Implement winning team members. L to R Chris Allen, Eric Wright, and DJ Mangnall. Not pictured Bryan Pekarek.



Idntiteez, Marysville, Kansas made us a new KLICA banner and sponsored us by providing all the hole/tee sponsor, and other sponsorship signs. Idntiteez is our “Go To” for KLICA clothing so if you’re needing to add to your KLICA wardrobe contact them for your shirt, jacket, or other clothing needs to let others know who we are!



Golfers, post tournament, enjoying a cold drink and relating stories of “if I’d only gotten the roll” or “I just missed it” or how close they came to that eagle putt!



Tracy Streeter accepts his winnings for coming "closest to the bottle" on hole 6.



John Piskac accepts his winnings for "shortest drive in the fairway used by your team" on hole 7. Not a team high point but a prize I'm sure he'll enjoy!



Jimmy Shum took home a Home Depot gift card for coming "closest to the pin on first shot off the tee" on hole 8.



Tyler Hiltbrand took home a Texas Roadhouse gift card for muscling up and hitting the "longest drive in the fairway used by the team" on hole 9.



Phil Bruna went home feeling like royalty with his prize for the longest putt on hole three.



With rolling terrain and mature trees the Marysville Country Club provides for a scenic and enjoyable round of golf.

Golf Tournament hole prizes were provided by the following:

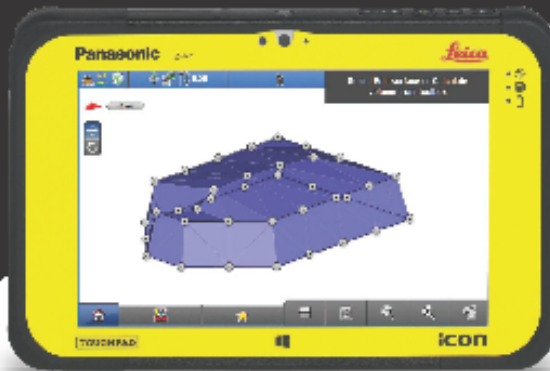
- **Modern Ag. Inc.**
- **Thole Land Improvement**
- **Schell Farm & Construction, Inc.**
- **Citizens State Bank**

The 2023 3rd Annual Swing Away & Pray Golf Tournament took place Friday, June 2. We were again lucky to have beautiful weather for the day. We had 56 golfers representing 14 teams. Although some less than others, they all had dreams of a championship in their mind. But then they teed off! Although my team had two veteran golfers who had led other teams to victory they soon recognized I was a liability they could not escape. Thankfully, we were more concerned with spending the day conversing and enjoying the company of friends. The other teams though competed through 18 holes of golf with the Landmark Implement Team coming out a winner, taking home \$200 of gift cards and a championship polo they will be able to wear with pride.

The Marysville Country Club again provided a scenic course and a good host. I can't say enough about our sponsors and their generosity supporting KLICA and our contractor members. Our sponsors are all listed on page three of this newsletter. Please be sure to express your appreciation the next time you see one of them. Idntiteez, our local custom apparel and embroidery shop provided our sponsorship signs this year. We thank them for their support of KLICA. And again, I'd like to say Thank You to all the local golfers who allow us the use of their golf carts and Gary and Janet Duever for coordinating the use of the carts.

The Marshall County Conservation District Manager recruited her daughter to assist her with the beverage cart ensuring our golfers were well supplied with cold drinks while out on the course.

Although the day is fast paced with little time for getting the whole group together I hope the golf tournament has proven as fun for our golfers as it is for me to put together and 'compete' in. Next year I'm going to actually start looking for my clubs before the morning of the tournament!



THE ULTIMATE 70T ROVER

- Robust aluminum housing
- Tilt compensation
- Latest Novatel GNSS Technology
- Integrated UHF or 900Mghz Radios
- BT & Wifi
- Fully integrated in iCON Machine Control

The **iCON GPS 70** series is seamlessly integrated into the Leica iCON field software. By keeping the core central interface, following the unequalled Leica iCON concept, you will benefit from the simple-to-use workflows and avoid costly downtime.



Laser Specialists Inc

Specializing in the latest laser, survey, GPS and software products

For more information call at
913-780-9990 or visit our website at

LaserGPS.com

icon
intelligent construction

Leica
Geosystems



Presenting the Next Generation
Leica iCON GPS 70 Series Smart Antenna

THE ULTIMATE 70T ROVER

- Permanent tilt compensation – no need to hold the pole vertical - resistance to magnetic interferences!
- Measure and stakeout points quicker than ever before!
- Measure anytime, anywhere – calibration-free – the antenna is ready when you are!



Prins/UFG hosts Executive Directors

On March 28 and 29 Prins/UFG again hosted the LICA Executive Directors to the Hotel at Kirkwood Center for an informative meeting. The meeting started with an evening of fun and socializing while assisting to prepare an excellent meal for attendees.

The next morning Executive Directors had the opportunity to hear from a number of knowledgeable United Fire Group staff. These individuals shared their knowledge and experience on insurance to update the Executive Directors on current insurance issues and the possible future direction of insurance, as related to contractors businesses and needs. At the conclusion of the day Prins/UFG presented Kansas LICA with a check in the amount of \$10,169.26 for educational support and assistance in 2023.

Hosting these educational opportunities and the financial support is not the only way UFG and Prins have shown their commitment to the industry. Risk control information and educational opportunities for state LICA chapters and policyholders is a part of this commitment, not only at this meeting but throughout the year. UFG/Prins provide in person, print, and online educational assistance that is invaluable to the industry and our members.

The LICA Portal, available to LICA Contractor Members, houses this information and resources for their use. For additional information about the LICA Portal contact your UFG insurance agent or LICA representative.



Endowment Scholarship

At their April, 2023 board meeting the KLICA Board met at the North Central Kansas Technical College Beloit campus. Before and after our meeting they visited with Mark Jones, Department Chair of the Heavy Equipment Operation Program. Department needs, student numbers, and other information relative to the school and industry were discussed. Shortly after this meeting in follow up with the financial aid office it was learned the Dane G. Hansen Foundation had matching funds available for endowment scholarship opportunities.

We are excited and proud to announce that beginning with the 2024/2025 school year there will be a \$1,000 KLICA Endowment Scholarship offered to a student attending the Heavy Equipment Operation School!

With not only Kansas members but members across the nation struggling to find qualified workers this is a tremendous opportunity to assist individuals wishing to pursue a career in heavy equipment operation. The endowment scholarship will provide an annual opportunity to assist with strengthening our workforce and the industry as a whole.

KLICA can't express enough appreciation for those who have supported our association and scholarship opportunities. Many individuals have made generous donations through memorials and other opportunities to support KLICA scholarship efforts.



SCHOLARSHIPS



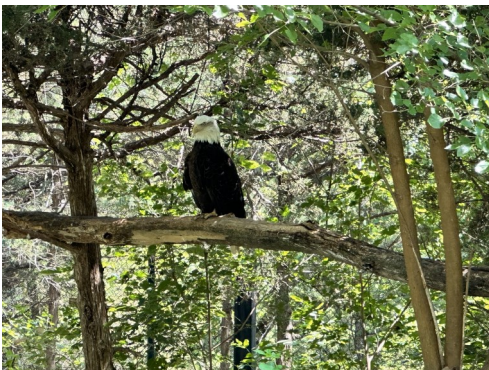
Nebraska Hosts National LICA Summer Meeting



The Graduate Hotel provided very comfortable modern rooms with a touch of nostalgia. Photo Marsha Schell



The tours were informative and very interesting. They were enjoyed by all who went on them. (Photos by Marsha Schell)



The Nebraska Land Improvement Contractors Association hosted the National Summer Meeting in Lincoln, Nebraska July 11—15. The meeting started out with tours of local points of interest on Tuesday, July 11 and continuing Wednesday, July 12. Tour attendees indicated these were excellent. Sights, points of interest, information, and food were enjoyed by those attending.

Educational seminars started Thursday morning where attendees were updated on a number of topics and tools of interest to their business operations and the industry. Thursday Night was highlighted by Associates Night with a Homecoming theme. A good time was had by those attending and a live auction of chapter donations brought in over \$6,000 for scholarships.

Friday morning started with committee meetings where the members discussed topics important to the future of the association. Friday afternoon ended with Regional meetings allowing states to address and discuss issues relevant to them in their respective regions.

Saturday morning brought the Board Meeting before the week was closed out with lunch. As always our national staff did an excellent job of putting together a meeting that was informative and valuable to those attending. The hotel was very nice and Nebraska LICA was a gracious and hospitable host ensuring a comfortable stay and good time for those attending.



The Kansas LICA contingent. LtoR—Jeff Schell, Marsha Schell, Jon Ungerer, Kala Bose, Dave Bose.

INSURANCE ELEVATED.
BEYOND DEDICATED.
➤ WE'RE ALL IN.



You've worked hard to construct a reliable business.

You've worked hard to construct a reliable business that takes pride in excellent workmanship. You'll need trusted partners who are as equally committed to protecting your business and vision for the future.

UFG Insurance has spent more than 75 years providing simple insurance solutions, aspiring to reach an unparalleled level of service and building a foundation of trust with every promise fulfilled.

Visit ufginsurance.com to find an agent today.



© 2022 United Fire & Casualty Company. All rights reserved.



EMPOWERING PROGRESS

- Sales, rental, service and support of the full line of Cat® building construction, paving and compact construction machines and engines
- Parts and service for any engine or machine
- Total truck maintenance
- Electric power generation
- Cat and non-Cat rental machines and equipment
- Trimble® machine automation and productivity tools
- Remote machine monitoring
- Engine and component rebuilds
- Machine and radiator shop services
- Technical and safety training

Chanute (620) 431-3600	Concordia (785) 243-1960	Great Bend (620) 792-5246	Liberal (620) 626-6555	Olathe (913) 393-0303	Topeka (785) 266-5770
Colby (785) 462-3913	Dodge City (620) 225-4121	Kansas City (816) 753-5300	Manhattan (785) 537-2101	Salina (785) 825-4661	Wichita (316) 943-4211

© 2022 Caterpillar. All Rights Reserved. CAT, CATERPILLAR, LET'S DO THE WORK, their respective logos, "Caterpillar Yellow", the "Power Edge" and Cat "Modem Hex" trade dress as well as corporate and product identity used herein, are trademarks of Caterpillar and may not be used without permission. www.cat.com / www.caterpillar.com



FoleyEq.com

On the Other Side of the Dozer Blade

by Margaret Smelser



“Kitchen Table” time again. I’m sitting here looking west at the green world. It’s a beautiful morning, not many birds out for now. I’ve seen several kinds this Spring that were new to me. A pair of

Oriole were a first. Beautiful!

We’ve had adequate rain for now, some help for the ponds. The off and on showers interfered with work but every drop a blessing.

David and Lee are finishing a small pond today, much to the delight of the land owner. Small acreage, small pond, but picture perfect.

Our family has had too many happenings in the last few weeks. Fred and Catherine’s seven year old Zane, fell from a ladder and spent two days in Childrens Mercy with a serious head injury. An adventuresome boy as country boys usually are. Catherine is recovering from a cracked leg bone and I had a misstep and wound up sprawled on the concrete floor at the community building in McLouth. A first birthday party for Cora, Lee & Rachels bundle of sunshine.

Jeannie & I made that well worn trip down the Wellman Road again, a broken collar bone. Just something else to add to old age problems! Emergency room, x-rays, and a brace.

The hardest is yet to come. Jeannies' Jerry is in Hospice Care at home. The lung cancer spread like wildfire in spite of all the treatment. My heart aches for them all, so soon after Jeannie losing her dad makes it even harder. They are blessed with their family of five and nine grandchildren. They are surrounded with love and caring. I look across the hills to the northwest and see them with my heart. God sets the timetable.

Now, to the book – it’s in the final process, soon will be ready to go. I have a copy here on the table I have checked and rechecked. Last week I received a letter from the Library of Congress, the copyright. It’s kind of exciting—in the grocery store, in Dollar General yesterday again, “when is the book coming out?” Who would have guessed how this is turning out? The title, “On the Other Side of the Dozer Blade”! Arbor Ink has been terrific. Darcy has been so patient and helpful, through this journey.

Time to end this, I’ve spent enough time on me. David didn’t slow down enough to give me some notes about work. His phone rings continually.

For all of you who long for rain, my heart aches. Not much about work this time but much about life.

In this terribly turbulent time we’re living in, we wonder about tomorrow.

Take Care out there moving dirt, hauling rock or fill dirt, terracing, etc. dealing with the “daily” of life and the often unthinking public. Surprise someone with a smile, you’re all important. Blessings hope and strength for the hardest day.

Margaret



Newsletter editors note: We were honored to receive a copy of Margarets book in the mail with a nice little note in it. After getting to know her over the last six years it has been exciting to read the chapters of her life and memories. Getting to know and share in Margarets life has been one of the joys of my time with KLICA.

Communicate Before You Excavate

Buried natural gas pipelines may not be where you expect them. In fact, their direction and depth can change rapidly in a short distance. To avoid potentially serious accidents when ditching, drilling, driving posts or any earth-moving activity, take these precautions before work begins.

- In Kansas, call 1-800-344-7233 or 811
- Kansas One-Call 1-800-DIG-SAFE or 811
- Remember, don't guess the location or depth of our pipelines.



Northern Natural Gas Co.

**To report a natural gas emergency:
CALL 911 & 1-888-367-6671**

PRECISION INTAKES

Full Line of Surface Water Intakes

- 8" & 10" riser with 8" & 10" combination Tees. Also 6" round riser with reducing Tee.
- Constructed of heavy-weight, high-density polyethylene.
- Parts highly adjustable & interchangeable with others on the market.
- Orifice plate placed at tee level or at ground level.
- Exclusive locking device on each part.
- User friendly, priced effectively.

"Dealer Inquiries Welcome"

Tim Rozendaal - Coretha Rozendaal
2084 Republic Ave. West, Monroe, IA 50170
www.precisionintakes.com
800-932-7611 • 641-259-2851 • Fax 641-259-3218

2024 National LICA Winter Convention



Make your plans now to attend:

Date: February 13-17, 2024

Location: Virginia Beach, Virginia

Hilton Virginia Beach Oceanfront

Room Rate: \$149/Night (plus taxes & fees)

Virginia Beach isn't just an idyllic summer destination – our coastal charm remains just as magical when the winter weather rolls in. U.S. adventurers, jet setters, and vacationers are heading to our seaside sanctuary this season – and according to Tripadvisor, Virginia Beach has become one of the fastest growing domestic destinations users are searching for.



Kansas LICA 2024 Winter Convention Location Set

Mark your calendar for January 28, 29, & 30, 2024! Plan to attend the KLICA Winter Convention.

Don't Miss Out!



The location has been set for the KLICA 2024 Winter Convention. We will be meeting at the Drury Inn, Wichita, Kansas.

Located in the heart of downtown Wichita, just 6 miles from the Dwight D Eisenhower National Airport. The hotel features complimentary breakfast, evening hot food reception including alcoholic beverages and Wi-Fi. Enjoy the indoor pool and indoor/outdoor spa overlooking the Arkansas River. A flat-screen cable TV is included in every room at Drury Plaza Hotel Broadview Wichita. For added convenience, a microwave and fridge are also provided. Onsite restaurant is AVI Seabar and Chophouse is located on site and serves steak and seafood for lunch and dinner. The lofted bar offers cocktails and beers for guests to enjoy. A hot breakfast is served daily at this hotel. A hot tub and fitness center are available at Broadview Wichita Drury Plaza Hotel. Guests can make use of the launderette facilities during their stay. INTRUST Bank Arena is less than 1 mile away. The Sedgwick County Zoo can be reached in 12 minutes drive.

Member Alert! - New Work Codes

With membership renewals coming up in a few months there will be a significant change all members should take note of - there will be changes to our work codes to create uniform codes on a national level. This effort has been discussed for a number of years with state executive directors and national providing input through committee discussions and involvement.

When membership renewals are sent out this Fall ALL members will need to review and select new work codes from the list below. Failure to indicate which work codes apply to your business will result in no work codes being listed for your business in the 2024 KLICA Directory.

As indicated this changes is met to simplify and standardize work codes across all membership chapters. Listed below are the new work codes which will be effective for 2024. Change is good!

- CH - Concrete/Hardscaping
- CR - Crane Service
- DB - Directional Boring
- DW - Drainage/Water Mgmt./Irrigation
- EM - Earthmoving/Grading/Leveling
- EX - Excavating/Land Clearing
- GR - Gravel/Rock Production
- LS - Landscaping/Seeding/Sod
- OD - Open Ditch Work/Dredging
- PD - Ponds/Dams
- RP - Roads/Paving
- SP - Site Prep/Demolition
- SS - Septic Systems/Onsite Wastewater Treatment
- TH - Trucking/Hauling
- TW - Terraces/Waterways
- UU - Underground Utilities



Scan to see our commitment to supporting Kansas contractors.

We keep business flowing.

With historically high prices for corn and soybeans, there has never been a better time to reinvest in land. Together with drainage contractors across Kansas, ADS products and solutions help farmers improve yields, increase farmable acres and create sustainable water management solutions to ensure the long-term success of their operation.

ADS®, the ADS logo and the Green Stripe are registered trademarks of Advanced Drainage Systems, Inc.
© 2021 Advanced Drainage Systems, Inc. 03/21



Skin Cancer and You

At least 1 in 5 Americans will develop skin cancer by the age of 70, making skin cancer the most common cancer in the United States. Fortunately, skin cancer is highly preventable by avoiding excessive sun exposure. Here are a few tips to protect your skin from the sun:

Stay in the shade under an umbrella, tree or other shelter. Avoid the sun between 10 a.m. and 4 p.m., when the rays are the strongest.

Wear dark-colored clothes made of tightly woven fabrics and a hat that shields your face, neck and ears.


Wear sunglasses to protect your eyes and the skin around them.

Apply sunscreen all over your body and lips and reapply at least every two hours—and after swimming or sweating. Learn more about picking the right sunscreen in the infographic below.


Most skin cancer cases are curable if diagnosed and treated early enough. Inspecting your skin for any spots or changes in color or appearance is important, as new spots or changes may indicate cancer. If you have any concerns, see your doctor.

Choosing the Right Sunscreen


With so many sunscreen options on the shelves, it can be difficult to know which offers the best sun protection. Opt for a sunscreen labeled with these factors:




Mineral formula
(e.g., titanium dioxide and zinc oxide)



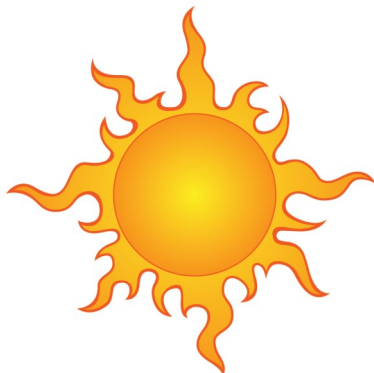
Broad spectrum



SPF 30 or higher



Water-resistant for up to 40 or 80 minutes





Bringing all of Kansas contractors and farmers to the forefront of efficient water management operations utilizing a strong GPS powered product portfolio from Trimble Agriculture.



- Trimble WM-Drain
- Trimble FieldLevel II
- Trimble WM-Form & Sub-Surface Software
- Topo & Design Services

Contact Us:
www.modernaginc.com
785-380-7993



Refreshing Summer Drinks

Non-Alcoholic



Strawberry Fields Forever

Get a blender and dump 2 cups of fresh strawberries, three-quarter cups of water, generous amounts of ice (2 cups), a teaspoon of lime juice, and four tablespoons of sugar.

Ingredients

After Work - Alcoholic

- 2 cups sliced strawberries
- 2 ounces white rum
- 1 1/2 ounces freshly squeezed lime juice
- 1/2 ounce simple syrup
- 1 cup ice
- Mint sprig & strawberry for garnish
- In blender, add ice strawberries, white rum, lime juice, and simple syrup
- Blend until desired consistency
- Pour into glass - Garnish with mint sprig & strawberry



Agri Drain
CORPORATION

America's Most Complete Manufacturer
and Supplier of Water Management Products

Flap Gates

Catch Basins

Rat Guards

Bar Guards

Water Quality Inlets

Smart Drainage System®

Grates

Call for a FREE catalog or visit our website to view our full line of products.
800-232-4742 ■ 641-742-5211 ■ www.agridrain.com

ALMA, KANSAS

Producer & Processor of Native Prairie Grass Seed

We provide seed and erosion supplies for reclamation projects, temporary and permanent road mixes, and wildflower seeds. Whether you need native grass seed or erosion products allow us to give you a quote.

"For All Your Seed & Erosion Product Needs"

26401 Fairfield Road, Alma, KS 66401

(785)-765-3415 feyhfarm@kansas.net
Fax: 785-765-4681 www.feyhfarmseed.com

June 2023

Safety Focused

Presented by: Kansas LICA

According to medical experts, adults lose an average of almost 10 cups of water each day simply by sweating, breathing and going to the bathroom.



Preventing Dehydration at Work

If you work outdoors or in warm environments, you could be particularly susceptible to dehydration—a condition that occurs when your body loses more water than it takes in. Upon becoming dehydrated, your body won't be able to function properly, possibly resulting in heatstroke or even death. As summer temperatures rise, it's vital to understand the symptoms of dehydration and ways to prevent this condition on the job.

The warning signs of dehydration include excessive thirst, tiredness, dry mouth, muscle weakness, headache and dizziness. If you begin to experience any of these signs at work, don't ignore them; take a break and inform your supervisor immediately.

Prevention is the strongest defense against dehydration. In particular, it's important to consume plenty of healthy fluids (e.g., water, sports drinks, decaffeinated tea and low-sugar fruit juice) and foods high in water (e.g., fruits and vegetables).

Unfortunately, determining the appropriate water intake isn't an exact science; it depends on your age, physical condition and body chemistry. The best overall approach is to make a conscious effort to stay hydrated and periodically consume fluids throughout the workday. Adjust your fluid intake to match your activity level and working conditions during tasks requiring heavy exertion.

For more information on avoiding dehydration, consult your supervisor.

© 2023 Zywave, Inc. All rights reserved.



**Reliable Equipment.
Responsive Service.**

berrytractor.com

Wichita, KS
316.943.4246

Garden City, KS
620.277.2290

Topeka, KS
785.266.9509

Springfield, MO
417.831.2651

Rambling Thoughts of an Executive Director

The Summer National meeting was a good meeting in Lincoln. Just an hours drive up the road it proved to be an excellent location. Hotel accommodations were very nice and with the Haymarket district there was an abundance of choices for eating, enjoying a cold drink, and shopping. The Kansas group and Benita Adams, Nebraska member even got me to step out of my box and eat at The Oven, Northern Indian Cuisine. While my meal and the Naan wasn't actually too bad I'm not converted from my meat and potatoes diet!

After the closing luncheon as I was saying my goodbyes I asked Brad McArdle to send some of their rain down our way. Sunday morning brought us 2.75 inches of much needed rain! I've always liked Brad and knew he was a person with connections - now I know how much! Thank You Brad - I might have a few more asks!

Earlier in this Newsletter you read about KLICA establishing an endowment scholarship with the North Central Kansas Technical College. This scholarship to assist a student in the Heavy Equipment Operation school is one of the most exciting things I've had the opportunity to be associated with. This scholarship provides the ability to contribute additional resources

to our members and the industry for years to come. That is something I'm happy and proud to have been a part of.

KLICA will hold their summer board meeting at the SAVE Farm to continue the partnership we have built with them to assist in the improvement of their farm to the benefit of our nations veterans. This partnership will provide the opportunity to introduce veterans coming out of active service to a possible career in heavy equipment operation.

On the national level the LICA Educational Foundation for Veterans continues to build momentum and support to offer the means to train these veterans for a career in heavy equipment operation.

I've been with KLICA for a little over six years now and the people I've met and the opportunities like the NCK Technical School Scholarship have made it fun and rewarding. The commitment both Kansas LICA and National LICA have shown to the heroes who have served this great country is an incredible added bonus. While I am the tiniest of roles in this effort I can't think of anything else I'd rather be a part of - improving the land for the future and benefitting veterans!



*My meal at The Oven Northern Indian Cuisine
- Lamb Madras.*



The Haymarket District proved a great place for evenings or noon meals. We found a really neat place called The Other Room - set up like an old time Speakeasy.





Get the "LOAD DOWN"

**35-55-60 Ton Capacity
DETACHABLE
GOOSENECK**



**Up to 27'6" of Usable Lower Deck Length
19½" Loaded Deck Height**

Dropped Wheel Bolsters and Front Bolsters with Traction Bars
Bucket Trough - Open Rear Trunnion - Grote Ultra Blue Wiring
Single Hydraulic Control - Powder Paint - Arched Gooseneck
7 Ride Height Positions - Flat Front Approach



Measurements are approximate



Landoll Trailers
www.landoll.com/trailers
800.428.5655 trailersales@landoll.com





Kansas Land Improvement
Contractors Association
Membership Application

Date: _____

Company Name: _____

First Name: _____ Last Name: _____ Spouse: _____

Street Address: _____

Mailing Address if different: _____

City: _____ State: _____ Zip Code: _____

Business phone: _____ Cell phone: _____

Fax: _____ Home phone: _____ Email: _____

Sponsor: _____

Annual Dues:	Contractor	Associate	Special
Circle Applicable Member Type	\$325	\$250	\$40

Contractor Services Provided:

- | | |
|--|--|
| <input type="checkbox"/> CH – Concrete/Hardscaping | <input type="checkbox"/> OD – Open Ditch Work/Dredging |
| <input type="checkbox"/> CR – Crane Service | <input type="checkbox"/> PD – Ponds/Dams |
| <input type="checkbox"/> DB – Directional Boring | <input type="checkbox"/> RP – Roads/Paving |
| <input type="checkbox"/> DE – Drainage/Water Mgmt./Irrigation | <input type="checkbox"/> SP – Site Preparation/Demolition |
| <input type="checkbox"/> EM – Earth moving/Grading/Leveling | <input type="checkbox"/> SS – Septic Systems/Onsite Wastewater Treatment |
| <input type="checkbox"/> EX – Excavating/Land Clearing | <input type="checkbox"/> TH – Trucking/Hauling |
| <input type="checkbox"/> GR – Gravel/Rock Production | <input type="checkbox"/> TW – Terraces/Waterways |
| <input type="checkbox"/> LS – Landscaping/Seeding/Sod | <input type="checkbox"/> UU – Underground Utilities |
| <input type="checkbox"/> Dealer/Service Company/Consultant/Insurance/Other | |

Annual dues are due and payable on a calendar year basis, prior to January 1 of each year.
KLICA dues for new contractor members joining after March 1 are paid up for the next full calendar year.

Return Application to: Jon L. Ungerer, Executive Director
Kansas Land Improvement Contractors Association
850 U.S. Hwy 77
Marysville, KS 66508

Contact Phone: 785-221-8697
Email: jungerer@kansaslica.com



Kansas Land Improvement
Contractors Association
850 U.S. Hwy 77
Marysville, KS 66508

Important Dates for your Calendar.....

- January 28, 29, & 30, 2024
KLICA Winter Convention
Drury Inn
Wichita, KS
- February 13 - 17, 2024
National LICA Winter Convention
Hilton Virginia Beach Oceanfront
Virginia Beach, VA

