



ESSENTIAL GEAR FOR THE BACKCOUNTRY



00
FLASHLIGHTS



00
TOOL KITS



00
HEATED



00
COMMUNICATION



00
STRAPS



00
BAGS



00
ELECTRONICS



00
EMERGENCY



00
WEARABLES



00
SAWS & AXES



00
PROTECTION

CONTENTS

X2000 LUMEN FLASHLIGHT KIT

ML-FLK-X2000

The X2000 Flashlight Kit replaces and improves upon the wildly popular X1800. Designed for those who operate at high speeds after dark, the flashlight generates a wide and bright 2000 lumen beam that penetrates far into the night. Ideal for snowmobiling, mountain biking, enduro rides, hunting and all other outdoor pursuits.

Handlebar and helmet quick-release mounts make it easy to light your path without holding the flashlight in your hands. The kit includes a wired handlebar remote button, so you can adjust the intensity setting or power it on or off on the fly.

The X2000 can be used as a power bank to charge your electronic devices, and it features a lockout mode that prevents the light from being turned on accidentally when carried inside a backpack or pocket.

MODES	LUMENS	RUNTIME
Turbo	2000	2hrs
High	1000	4hrs 20 mins
Medium	500	6hrs 10 mins
Low	250	12hrs 10 mins
Eco	50-100	37hrs
Strobe	1000	5hr 30m

SPECIFICATIONS

- Max brightness 2000 lumen
- 6700 mAh battery capacity
- Power bank function
- Wired handlebar remote control
- Lockout mode
- >200 m beam distance
- 125° floodlight angle
- IPX6 waterproof
- USB-C charging
- 201 g
- 118 x 53 x 33 mm



FLASHLIGHT KIT PARTS & REPLACEMENT PARTS

ALL KITS INCLUDE:

- Charging cable
- Handlebar mounting bracket
- GoPro accessory mount
- GoPro helmet mount



S1500 LUMEN FLASHLIGHT KIT

ML-FLK-S1500

S1500 is the next generation of lighter, brighter flashlight from Mountain Lab. In addition to regular flashlight modes, S1500 also features ‘Smart Mode’—an extra safety feature for riders in daylight. In Smart Mode, the S1500 emits a bright strobe light to increase rider visibility and safety. When daylight fades, the flashlight automatically switches to a steady headlight. In Smart Mode, after two minutes without motion the light will turn off to preserve battery life, until motion is detected again.

S1500 also features a lockout mode that can be used to prevent the flashlight from accidentally turning on when carried inside a backpack or pocket. It is IPX6 waterproof and uses USB-C fast charging. The S1500 Flashlight kit includes both handlebar and helmet quick-connect mounting options.

MODES	LUMENS	RUNTIME
Ultra High	1500	1hr 48 mins
High	750	4hrs
Medium	300	12hrs
Low	100	24hrs
Breathe	100-50	24hrs
Daytime Flash	500	30hrs

SPECIFICATIONS

- Max brightness 1500 lumens
- 4800 mAh battery capacity
- Smart Mode
- >200 m beam distance
- 118° floodlight angle
- IPX6 waterproof
- USB-C fast charging
- 159 g
- 108 x 28 x 38 mm dimensions



REPLACEMENT HANDLEBAR QUICK RELEASE MOUNT

MTN-LAB-XHB2

Allows the flashlight to be mounted to handlebars.



REPLACEMENT HELMET QUICK RELEASE MOUNT

MTN-LAB-XHE2

Allows the flashlight to be affixed to GoPro style helmet mount (not included).



FLASHLIGHTS



X850 LUMEN FLASHLIGHT KIT

ML-FLK-X850

The X850 is a new and improved version of our popular, lightweight X800 flashlight. Now packing an additional 50 lumens of output into the same rugged and lightweight housing.

X850 is the most suitable of all Mountain Lab flashlights for use mounted on a helmet, due to its light weight.

Included in the flashlight kit are mounting options for both helmet and handlebar mounting.

Charging is updated with USB-C charging.

MODES	LUMENS	RUNTIME
High	850	2hrs
Medium	400	3hrs
Low	200	6hrs
Eco	100-50	23hrs 30min
Strobe	850	6hrs

SPECIFICATIONS

- Maximum brightness 850 lumens
- 3350 mAh battery capacity
- >200 m beam distance
- 85° floodlight angle
- IPX6 waterproof
- USB-C charging
- Dimensions 101 x 34 x 28 mm
- Weight 130 g weight



KINETIC HEADLAMPS

The Kinetic line of headlamps feature both a spot and floodlight, and an optional motion sensor mode that can be used to turn the light on and off with the wave of a hand—useful when you’re wearing gloves or your hands are busy holding tools or parts.

Built to withstand the toughest environments, these use rugged, waterproof and impact-resistant housings. They can handle the bumps, drops, rain and splashes that come with outdoor activities, ensuring they remain durable and reliable throughout your journeys.

Kinetic headlamps use a USB rechargeable battery that is convenient and long-lasting.



KINETIC 800 PRO HEADLAMP

ML-HL-K800P

The Kinetic 800 Pro provides up to 800 lumen of dark-piercing light. A smooth dimming feature allows the output to be customized for the perfect amount of light for any situation, whether a soft glow or a powerful beam is required. It also features a red light that can be used for nighttime activities without disrupting the user’s night vision.

The strap uses silicone banding to help keep the headlamp securely in place. It is adjustable for all head sizes, and can be expanded enough for use on a full face helmet.

FEATURES

- Spotlight 500 lumen
- Floodlight 500 lumen
- Spot + floodlight 800 lumen
- Red light
- Smooth dimming
- Motion sensor
- Last used mode memory
- Impact resistant case
- IPX6 waterproof
- 2000 mAh USB-C rechargeable battery
- 127 g (including headband)



KINETIC 500 PRO HEADLAMP

ML-HL-K500P

The Kinetic 500 Pro Headlamp is a lighter, more compact sibling to the ultra-bright Kinetic 800 Pro model, and it shares many of the same great features.

In addition to normal on/off functionality with max brightness of 500 lumens, an additional motion sensor mode allows the user to the flip the light on and off with the wave of a hand.

Two lights—spot and flood—combine to offer four different light settings, with smooth dimming to dial in the exact amount of brightness desired.

The Kinetic 500 Pro Headlamp is IP54 waterproof, with an impact resistant case.

A 1000 mAh USB-C rechargeable battery provides between 1.2 to 10+ hours use, depending on output.

FEATURES

- Spotlight 400 lumen
- Floodlight 200 lumen
- Spot + floodlight 500 lumen
- Motion sensor
- Smooth dimming
- Quick strap removal clip
- Magnetic back
- Impact-resistant case
- IP54 waterproof
- 1000 mAh USB-C rechargeable battery
 - 3x AAA backup power source
- 112 g (including headband)

FLASHLIGHTS

**RIDESYNC2
TWO RIDER HELMET COMMUNICATIONS SYSTEM**

ML-COM-BT-RSYNC2

RideSYNC2 is an easy-to-use helmet communications system for a rider and passenger or two riders to stay in touch while on the move. Riders can carry on a conversation, listen to the radio or integrate with their smartphone via Bluetooth with the push of a button. Smartphone integration allows the user to listen to music, make/receive calls, follow GPS navigation instructions and access their phone's voice command.

RideSYNC2 is sold as a pair of devices—one for each user. They can also be used on their own as a standalone device.

FEATURES

- 2 riders or rider-to-passenger intercom
- Smartphone integration
- Voice command
- GPS navigation
- Make and receive calls
- Listen to music
- FM radio

SPECIFICATIONS

- Bluetooth v5.2 QCC Chipset
- 2.4 GHz frequency
- Up to 800 m range
- 40 mm high-definition speakers
- CVC digital noise reduction
- Waterproof IP65
- USB-C charging
- 650 mAh lithium battery
- Working time: 8.5 hours
- Standby time: 15 days
- Charging time: 2 hours
- Working temperature: -10 °C to 50 °C

INCLUDED

Two complete communication systems, each including:

- Communications device
- 2 quick-release helmet mount options:
 - Clip to helmet
 - 3M adhesive patch
- 40 mm helmet speakers
- 2 microphones options:
 - Boom (works with open face helmets)
 - Button
- USB-C charging cable
- Adhesive hook-and-loop patches
- Speaker adjustment shims



**RIDESYNC SOLO
SINGLE RIDER HELMET AUDIO SYSTEM**

ML-COM-BT-RSYNCSOLO

RideSYNC SOLO is the improved Mountain Lab Bluetooth helmet speaker system for solo riders who want to enjoy music, make and receive calls or get directions on the go.

The system is compatible with both fully-shielded and open-faced helmets, and provides a rich sound experience thanks to 40 mm HD speakers.

- Advanced CVC (Clear Voice Capture) noise echo cancelling and noise suppression technology allows the user to transmit crystal clear voice quality when talking
- ANC (Active Noise Cancelling) blocks out background noise while you listen to music or take a call, for clear audio

RideSYNC SOLO is designed for on- and off-road users of snowmobiles, motorcycles, dirt bikes, ATV, SxS—anyone who wants to enjoy an in-helmet audio experience while riding.

SPECIFICATIONS

- Bluetooth v5.2
- Operating frequency 2.4 Ghz
- Digital noise cancelling
- Voice command
- Battery capacity 280 mAh
- Working battery life 6.5 hr
- USB-C Charging
- Charging Time 2 hr

INCLUDED

- RideSYNC SOLO Device
- 40 mm HD Speakers
- CVC Boom Microphone
- USB-C Charging Cable
- Adhesive Mounting Patches
- Speaker Shims
- User Manual



COMMUNICATION

SCOUT 2W 2-WAY RADIO

The Scout 2W Radio has been specifically designed to handle your most extreme adventures. The radio is built strong, with IP67 dust- and waterproof rating, and featuring a tough and durable exterior.

The Scout transmits at an industry-leading 2 watts—the most allowed in a two-way radio that doesn't require a license to operate.

It is fully compatible with all FRS/GMRS radios on the market (including the ROAM 2W Radio), and can be used with or without the included speaker microphone.

INCLUDED

- IP56 waterproof speaker microphone
- Speaker microphone cover
- Charging tray, cable and adapter
- Belt clip

FEATURES

- 2 watts transmission power
- Fully waterproof
- 22 channels, 121 privacy codes
- Built-in flashlight and red SOS light
- Light flashes when radio is dropped in water
- Rechargeable NiMH battery power
- 75+ hours run time (in standby)
- Standard AA battery backup capability
- Automatic power-saving
- Keypad lock
- Scan function
- Dual channel watch
- Squelch level
- Monitor channel
- Adjustable call tone
- Voice-activated transmission
- NOAA weather
- FCC and IC certified



SINGLE RADIO
MTN-LAB-RDS1



SET OF 2 RADIOS
MTN-LAB-RDS2



SPEAKER MICROPHONE COVER

MTN-LAB-RCV2

Protects the Mountain Lab radio speaker microphone from exposure to the elements.



SPEAKER MICROPHONE

ROAM RADIO MIC REPLACEMENT:

MTN-LAB-RD3

SCOUT RADIO MIC REPLACEMENT:

MTN-LAB-RDSMS

A replacement IP56 speaker microphone for your Mountain Lab 2W radio.

SQUAD RADIO

SINGLE // ML-RD-SQD-ONE

PAIR // ML-RD-SQD-PAIR

Mountain Lab's newest FRS radio is the compact and lightweight SQUAD Radio.

The SQUAD radio is designed to be worn on the shoulder strap of a rider's backpack for easy accessibility while riding, using the included shoulder strap mounting harness.

For the best possible range, the SQUAD uses the maximum allowed 2 watt transmission power for a license-free FRS radio in North America.

The SQUAD radio can communicate with any Mountain Lab or FRS radio from other brands such as BCA or Motorola, and the channel setting and CTCSS privacy code are easy to adjust in the field if needed.

HIGHLIGHTS

- Compact and lightweight
- Powerful transmission
- Waterproof
- Long-lasting battery

FEATURES

- Easy adjust channel and CTCSS privacy code settings
- Auto squelch
- Channel scan
- Key lockout
- Timeout timer
- Roger tone on/off
- Battery life indicator
- Power saving display

INCLUDED

- SQUAD Radio x1
- Shoulder strap mounting harness x1
- USB-C charging cable x1
- User Manuals

SPARE SQUAD RADIO BATTERY:

ML-RD-SQD-BAT



COMMUNICATION

SUMMIT 16W WATERPROOF BLUETOOTH SPEAKER **NEW**

ML-SPK-S16W

The Summit 16W Waterproof Bluetooth Speaker brings your soundtrack to the backcountry. Rugged and fully waterproof, Summit 16W can accompany all your outdoors adventures without fear of the elements.

This softball-sized mini speaker delivers an impressive 16 watts of crystal clear audio, with twin passive radiators that create deep pitches for incredibly full, robust sound from such a small and portable sound system.

No matter how lost you get out there, 15 hours of playback will keep spirits high! True wireless Stereo (TWS) capability allows two Summit 16W speakers to be linked for a surround stereo listening experience with dedicated left and right channels. And if you're still in cell service, the built-in microphone allows hands-free phone conversations.

FEATURES

- 16 watts total output power
- Waterproof submersible IPX7
- 15 hours playback time
- True Wireless Stereo capability
- 3 LED light modes (or off)

SPECIFICATIONS

- Speakers: $\Phi 52\text{mm}$ 4 Ω 8W x2
- Passive radiators x2
- Bluetooth V5.3+EDR
- Audio inputs: Bluetooth, Aux, microSD card, Built-in mic
- Battery: 5000 mAh
- Charging time: 3 hours
- Power input: DC5.0V/1.0A
- Charging type: USB-C
- Dimensions: 95 x 94 x 113 mm
- Weight: 435 g



MINI BOOST 12V 1000A BATTERY BOOSTER **NEW**

ML-BB-MB1000

Don't be stranded in the backcountry with a dead battery! The MINI BOOST 12V 1000A Battery Booster is the most portable solution for dealing with dead or weak vehicle batteries away from civilization.

One of the lightest and most compact battery boosters on the market, MINI BOOST is designed specifically to provide a powerful jump start for powersports vehicle engines, including all UTV, ATV, on- and off-road motorcycle and snowmobile engines.

MINI BOOST 12V 1000A provides up to 10 boosts on a single charge.

FEATURES

- Jump start gasoline engines up to 3.0 L displacement
- Peak current 1000 A
- Manual override allows jumping of fully drained batteries
- Power bank capability for charging small devices such as phone, gps, radio, etc.
- LED flashlight with 3 modes
- Compact and lightweight
- EVA storage case

SAFETY PROTECTIONS

- Reverse polarity
- Short circuit
- Over current
- Over temperature
- Over discharge
- Over charge
- Over voltage
- Reverse charge

SPECIFICATIONS

- Battery capacity: 6000 mAh
- Charging: 5.0V/2.0A USB-C
- Charging time: 2.6 hours
- USB output: 5.0V/2.1A
- Operating temperature: -20 °C to 60 °C
- Dimensions: 148 x 76 x 24 mm
- Weight: 260 g device only, 446 g w/ intelligent cables



TIREBANK MAX
PORTABLE TIRE INFLATOR

ML-TI-TB-MAX

TireBANK Max is the ultimate portable solution for fully inflating and accurately pressurizing motorcycle, ATV, SxS, trailer and automobile tires on the go.

It is battery-powered and lightweight and can be used anywhere without the need for a compressor, bulky hose or power supply. Simply attach the valve fitting, set the desired pressure and press the start button. TireBANK will automatically stop when it reaches the set pressure.

For off-road users, tire pressure can be lowered for traction when needed, then quickly and easily aired back up for normal driving.

TireBANK Max features a powerful compressor that provides an industry-leading 30 L/min flow rate and can pressurize up to 160 psi.

Its high-capacity 7500 mAh battery allows for multiple fills and can be used as a power bank to charge your other electronic devices in an emergency.

It features a built-in LED flashlight for use in the dark.



FEATURES

- Battery-powered, portable design
- 5 quick settings—automobile, motorcycle, bicycle, ball and custom
- Dual display—tire pressure gauge and user set pressure
- Power bank capability
- Built-in LED flashlight
- Auto-stop at set pressure
- Auto-off

SPECIFICATIONS

- Up to 160 PSI air pressure.
- Adjustable in 0.5 psi increments
- Quick 30 L/min fill rate
- 7500 mAh Li-ion battery 11.1 V
 - Working time: 20-25 min
 - Charging time: 2-3 hr
 - USB-C charging port 5V-2A
 - USB-A power bank port
- Units of measure: psi, kPa, bar, kg/cm2
- Dimensions: 161 x 60 x 62 mm
- Weight: 612 g

INCLUDES

- TireBANK Max inflator
- EVA protective carry case
- 45 cm nylon braided inflation hose with standard (Schrader) valve
- Additional valve adapters:
 - Presta (mountain bikes and bicycles)
 - Ball needle (sporting equipment)
 - Swim inflatable nozzle
 - USB-C charging cable
- User manual



TOWER BOOT DRYER

ML-BD-TW

The Tower Boot Dryer features four drying towers that can be extended to accommodate larger items such as snowmobile boots and large gloves with gauntlets. It delivers a steady, warm airflow that provides 80% faster drying efficiency without the risk of overheating or damaging your expensive riding gear.

The dryer can be set to run from 30 minutes to 3 hours and will turn off automatically when done. It can be operated with or without heat.

Folding feet with anti-slip pads are designed to collect wet runoff and well as provide stability. The feet fold away for compact storage.

The Tower Boot Dryer plugs into a standard 110 v household electrical outlet and features both fuse and overheat protection for safety.



SAWS + AXES

JOURNEY AXES

Each Journey Axe is made tough to withstand the rigours of outdoor adventure.

FEATURES:

- Forged carbon steel head for superior edge retention, with PTFE coating to help slice through wood and reduce sticking
- Cutting head shaped for all-purpose chopping
- Shock-absorbing nylon/fibreglass composite handle is both strong and light
- TPE material under the hand for a tacky grip
- Well-balanced design
- Includes durable sheath with carry handle to protect the blade in transit.



JOURNEY AXE 14"
ML-AX-JN-14

- Length: 36 cm (14 in.)
- Head Weight: 450 g (16 oz.)
- Total Weight: 630 g (22 oz.)
- Kindling, branches and small logs don't stand a chance



JOURNEY AXE 24"
ML-AX-JN-24

- Length: 60 cm (24 in.)
- Head Weight: 780 g (28 oz.)
- Total Weight: 1230 g (43 oz.)
- More chopping power for small to medium sized logs

ULTIMATE BACKCOUNTRY CHAINSAW
MTN-LAB-SAW1

The Mountain Lab Ultimate Backcountry Chainsaw is extremely compact, lightweight, and cuts through wood amazingly well. The perfect tool for all your outdoor adventures!



SAWS + AXES



BACKWOODS FOLDING SAW
ML-SAW-FLD-10

This oversized version of our popular folding saw features a 10 in. (25 cm) long by 1.2 mm thick blade for quicker cutting of larger diameter wood.

The long, easy grip handle is more comfortable for two-handed use, allowing for much faster cutting with less effort.

FOLDING HANDSAW
MTN-LAB-SAW2

This is a sturdy, compact hand saw which uses a 1.2mm steel blade compared to the standard .9mm blade. Great for cutting wood.



HARVESTER SAW
MTN-LAB-SAW3

This oversized hand saw will make quick work of trail clearing, firewood collection or shelter building. The cushioned, ergonomic handle features improved material for better grip. For winter users, 5 cm markings on the blade allow users to measure columns for snow stability tests. A 3 mm grid pattern printed on the blade allows for snow crystal size estimation.



WIDE OPEN THROTTLE SNOWMOBILE TOOL KIT

ML-TK-WOT

For the WIDE OPEN THROTTLE Snowmobile Tool Kit, we wanted to create a lighter, more packable tool kit, using only the tools specifically required for backcountry or trailside repairs of snowmobiles.

The tools chosen were selected to universally allow the removal or adjustment of almost all fasteners on modern snowmobiles from Arctic Cat, Lynx, Polaris, Ski-Doo and Yamaha.

If it needs fixing out there, it can be done with the WOT Tool Kit.

WIDE OPEN THROTTLE TOOL KIT CONTENTS:

- Compact EVA case, with organizer roll
- Lightweight wrenches
 - 8 – 10 mm
 - 10 – 13 mm
 - 12 – 14 mm
 - 15 – 17 mm
 - 16 – 19 mm
- Mini ¼" drive ratchet
- ¼" drive T-handle
- 4" ¼" drive extension
- Sockets
 - 8 mm
 - 10 mm
 - 13 mm deep
 - 15 mm
 - Bit driver adapter
- Bits
 - Torx
 - T10, T15, T20, T25, T39, T40
 - Hex
 - H4, H5, H6, H8, H10
 - Standard
 - PH2, SL6
- 6.5" long-nose locking pliers
- Mechanic's wire
- Electrical tape
- Zip ties



ENDURO TOOL KIT - METRIC

ML-TK-END-MET

The Enduro Tool Kit Metric is designed to be a lightweight, trailside emergency repair tool kit for dirt bike riders on the go.

It features a carefully curated selection of quality tools to handle common trailside repairs of dirt bikes that use metric fasteners.

A tool roll helps secure and organize the tools. There is a zipper pouch for small parts and pieces.

The tool roll is contained inside a lightweight pouch that adds protection and water-resistance.

TOOLS INCLUDED:

- T-handle with ¼" drive
- ¼" drive 10 cm (4") extension
- ¼" drive 15 cm (6") flex extension
- 6 mm, 8 mm, 10 mm, 12 mm, 13 mm ¼" drive sockets
- ¼" bit driver adapter
- Mini bit driver handle
- SL4, SL6, PH1, PH2, T25, T30, T40, T45 bits
- 3 mm, 4 mm, 5 mm, 6 mm hex keys
- 8-10 mm, 12-14 mm, 13-17 mm open-ended wrenches
- 6" mini crescent wrench
- Mini needle-nose pliers with cutters
- 3 m electrical tape roll
- 1 m mechanic's wire
- 5 zip ties
- Tool organizer roll
- Water-resistant zippered case



TOOLS

TREELINE MULTI-TOOL
ML-MT-TL

When your adventures take you into the backcountry, you'll want to both travel light AND be prepared.

The Treeline Multi-tool is designed to give you only the most commonly used tools for an adventure in the woods or as an everyday carry, and nothing more. It offers 8 tools in one easy-to-carry package, with minimal weight and bulk.

FEATURES

- Lightweight and compact body
- 7CR17 steel blade offers corrosion resistance, toughness and superior edge retention
- Bit driver is center-mounted for precise control and easy turning
- Bit driver can accept any standard ¼" drive bit
- Safety lock for all sharp tools
- Fine blanking technology for high quality and precise action
- Belt Clip

TOOLS INCLUDED:

- 70 mm Flat Blade
- 70 mm Saw Blade
- Can Opener
- Bottle Opener
- Mini Scissors w/ Return Spring
- Mini Slotted Screwdriver
- ¼" Bit Driver
- Bits included: PH1 & Slot 3/16

Length: 102 mm closed / 176 mm open
Weight: 125 g



TRAILHEAD MULTI-TOOL
ML-MT-TH

The Mountain Lab Trailhead Multi-tool provides 15 invaluable tools for those times when you're stuck in a pinch.

The blades are manufactured from high-quality 420 Stainless Steel, which maintains a keen edge but is easy to sharpen. Each tool is manufactured with ultra-precise fine-blanking technology for the highest quality.

All tools can be accessed with the pliers in both the open or closed positions, and the tools automatically lock in place for safe usage.

A return spring allows easy use of the pliers with less hand fatigue.

The Trailhead Multi-tool comes with a nylon carry case included, which can be mounted on your belt or pack strap for easy access.

SPECIFICATIONS

Length: 105 mm closed / 160 mm open
Weight: 381 g

TOOLS INCLUDED:

- Flat Nose and Regular Pliers
- Serrated Knife
- Flat Knife
- Saw
- Awl
- Metal and Wood File w/ Ruler
- Can Opener w/ Mini-Slotted Screwdriver
- Bottle Opener w/ Slotted Screwdriver
- Wire Cutter
- Wire Stripper
- Magnetic 1/4" Bit Driver
- Driver Bits Included:
 - Phillips #1, #2, #3
 - Slot 2, 5, 4, 6
 - Torx T10, T15



BACKCOUNTRY TOOL KIT
ML-TK-BC

The Mountain Lab Backcountry Tool Kit has been specifically designed for backcountry repairs of your snowmobile or off-road vehicle. This compact and lightweight tool kit contains the tools required for the most common backcountry repair jobs. Tools are organized and contained in a water-resistant EVA protective case.

BACKCOUNTRY TOOL KIT CONTENTS:

- **Water-Resistant Soft Case**
- **Lightweight Wrenches**
 - Metric
 - 8-10 mm
 - 10-13 mm
 - 2-14 mm
 - 15-17 mm
 - 16-18 mm
 - SAE
 - 3/8"
 - 7/16"
 - 1/2"
 - 9/16"
- **Mini 1/4" Ratchet**
- **4" 1/4" Drive Extension**
- **1/4" to 3/8" Drive Adapter**
- **Sockets**
 - Metric
 - 1/4" 8 mm socket
 - 1/4" 10 mm deep socket
 - 1/4" 13 mm socket
 - 3/8" 15 mm deep socket
 - 3/8" 16 mm socket
 - 3/8" 17 mm socket
 - SAE
 - 1/4" 7/16" socket
- **1/4" 1/2" socket**
- **Bit Sockets**
 - Torx
 - 1/4" T20 socket
 - 1/4" T25 socket
 - 1/4" T30 socket
 - 1/4" T40 socket
 - Allen
 - 1/4" H4 socket
 - 1/4" H5 socket
 - 1/4" H6 socket
 - 1/4" H8 socket
- **Bit Driver**
- **Screwdriver Bits**
 - Phillips #1, #2, #3
 - Slot #3, #6
- **6" Crescent Wrench**
- **6.5" Long Nose Locking Pliers**
- **Spring Puller Tool**
- **Mechanic's Wire**
- **Electrical Tape**
- **Zip Ties**



STRAPS

TOW / RECOVERY STRAP

This heavy-duty recovery and tow strap is 50 mm (2") wide with a breaking strength of 4,540 kg (10,000 lb). It features oversized reinforced loops at both ends for ease of use and durability. A steel quick-release carabiner with a working load of 4.75 tonnes (10,000 lb+) allows quick and easy installation. The Mountain Lab Recovery Strap comes in two lengths: 6.1 m (20') and 12.2 m (40').

MTN-LAB-TOW2	MTN-LAB-TOW3
20' (6.1 m) length	40' (12.2 m) length



WISE STRAP

Once you've tried one of these 'do anything' straps, you'll find a million uses for them. They are fast to install, and won't come loose, ever. Slightly stretchy and super strong, you can rely on these PU straps to lock down just about anything.

Mountain Lab Vise Straps feature a nylon clasp that won't scratch or damage paint or powder coating on your powersports vehicle surfaces. Vise Straps can be wrapped around twice to secure smaller items, or daisy-chained in series to secure larger objects.

- COMMON USES INCLUDE:
- Securing luggage to ADV and dual-sport bikes
 - Strapping gear to a snowmobile rack
 - Lashing an axe or fire extinguisher to the frame of a UTV
 - Organizing coils of cables and rope



WISE STRAP 20

ML-STR-VS-20-BK // BLACK
ML-STR-VS-20-TL // TEAL
ML-STR-VS-20-OR // ORANGE

SPECIFICATIONS:

- Length: 510 mm (20 in.)
- Width: 25 mm (1 in.)
- Thickness: 2.5 mm (<1/8 in.)
- Working Load: 35 kg (77 lb.)

WISE STRAP 30

ML-STR-VS-30-BK // BLACK
ML-STR-VS-30-RD // RED

SPECIFICATIONS:

- Length: 760 mm (30 in.)
- Width: 25 mm (1 in.)
- Thickness: 2.5 mm (<1/8 in.)
- Working Load: 35 kg (77 lb.)



UTV SOFT LOOP TIE DOWN STRAPS

ML-STR-SLU

This pair of burly tie down straps are designed to safely secure your UTV, ATV or heavy motorcycle in transit. The straps are 1.5" wide by 96" long for versatile use, and feature reinforced stitching for extra strength.

The tie downs use a soft loop that allows the strap to be secured to the vehicle without the risk of scratching or damage. The soft loop is longer than on our Motorcycle Soft Loop Tie Downs, to allow better securement options for larger vehicles.

Rubberized hooks further reduce the risk of accidental damage to your vehicle, and a locking gate prevents the hooks from coming loose in transit.

A ratcheting system is used to securely snug down heavier vehicles.

The straps are colour coded to make it easier for the user to quickly find the right end.

Mountain Lab UTV Soft Loop Tie Down Straps are sold in pairs. The package includes a drawstring storage pouch

RATCHET TIE DOWN STRAP

MTN-LAB-STRP

The Mountain Lab Gear Ratchet Tie Down Strap is a versatile tie down strap that can be used to secure a variety of powersports equipment or other cargo in transit. The heavy-duty strap uses a ratcheting buckle to safely and securely snug down heavy objects. The strap is 12' long—enough to cross a trailer or pickup truck bed in any direction.

Both ends of the strap feature a securement hook with a spring-loaded locking gate that makes the strap easier to install. The hooks are coated to prevent scratching of your vehicle or cargo.

The Ratchet Tie Down Strap has a breaking strength of 1500 kg (3300 lb).

This package contains a single strap and drawstring storage pouch.



MOTORCYCLE SOFT LOOP TIE DOWN STRAPS

ML-STR-SLM

Our Motorcycle Soft Loop Tie Down Straps are best suited for lighter vehicles such as dirt bikes and motorcycles. The straps are 1.5" wide by 84" long, and feature reinforced stitching for strength.

These straps use a soft loop that allows the user to attach the straps to the motorcycle without risk of scratching the bike.

Rubberized hooks further eliminate the risk of damage. These feature a locking gate that prevents the hooks from coming loose in transit.

The Motorcycle straps use a cam buckle for quick and easy securement that will not slip or come loose.

The straps are colour coded to make it easy for the user to find the right end quickly.

Mountain Lab Motorcycle Soft Loop Tie Down Straps are sold in pairs. The package includes a drawstring storage pouch



STRAPS

STRAPS

SKI PULL STRAP

MTN-LAB-SPS

The perfect tool to help get your snowmobile unstuck! This 700 kg sling is tough, compact, and easy to use. Simply pass an end through a ski loop and pull on both ends or girth hitch it to a ski and have two people pull. Safer, more effective, and less impact on your back than simply pulling. Easily fits inside your pocket.



SNOWMOBILE TOW KIT

MTN-LAB-TOW

Extremely lightweight and easy to use. Sets up in seconds and provides an effective way to tow a broken snowmobile home. Simply remove the belt of the broken snowmobile, girth hitch the strap to the tow snowmobile, and then loop the two straps around the broken snowmobile's spindles. The system works well in tricky terrain and allows the rider of the broken snowmobile to continue to maintain control.



GEAR TRUNK 80 L
WATERPROOF DUFFEL BAG

NEW

ML-DB-GTNK-80

The GEAR TRUNK 80 L Waterproof Duffel Bag is a downsized version of the original 120 L duffel, for smaller loads. Otherwise, it offers all the same great features as its 120 L sibling, just with two large compartments instead of three.

A large compartment with removable waterproof lining can be used for bigger equipment pieces such as helmet or boots.

The main compartment features two goggle pockets, two elasticized device pockets, one zippered pocket and capacity for an assortment of other gear.

SPECS

- 60 cm (24 in.) long
- 30 cm (12 in.) tall
- 44 cm (17 in.) wide
- 80 litre volume

GEAR TRUNK 120 L
WATERPROOF DUFFEL BAG

ML-DB-GTNK-120

The Gear Trunk duffel uses a durable, fully-waterproof 1680D TPU material to keep snow, rain and mud on the outside. Wet gear thrown inside won't soak through either.

The Gear Trunk has been carefully designed to organize and carry exactly what you need for riding. It features three specialized compartments:

HELMET COMPARTMENT

- Big enough for full face and modular helmets

BOOTS COMPARTMENT

- TPU lining makes it easy to wipe up dirt, mud and water
- Sized to accommodate large snowmobile boots

MAIN COMPARTMENT

- Two soft-lined goggle pockets
- Elasticized pouches for organization of devices such as radio, GPS, satellite communicator, transceiver, etc.
- Zippered mesh pocket for small valuables like key, phone, wallet, etc.
- Large, zippered mesh pocket on lid
- Capacity for other gear such as outerwear, gloves, neck brace, etc.

SPECS

- 90 cm (36 in.) long
- 30 cm (12 in.) tall
- 44 cm (17 in.) wide
- 120 litre volume

BAGS



BAGS

BULL TROUT 25 L BACKPACK

ML-BP-BT-25L

When your adventure gets really nasty, you'll want to be prepared with the Bull Trout Backpack. This pack is 100% waterproof submersible and comfortable to carry all day long. It's perfect for travel or outdoor adventures in any conditions.

The main waterproof zipper is a faster and more convenient way to access the inside than a traditional dry bag roll top. It also creates a better seal.

The Bull Trout backpack is made from tough and durable 840D single-coated TPU for 100% submersible waterproofness and is PVC-free.

FEATURES

- 100% waterproof submersible
- Sturdy grab handles top and side
- Padded back and shoulder straps for all day comfort
- Easy access exterior pocket with waterproof zipper
- Water bottle carry pouch
- Gear attachment rack
- Padded bottom to protect contents
- Removable padded laptop sleeve doubles as a sit pad
- Adjustable shoulder, waist and sternum straps
- 25 litre capacity
- Emergency whistle buckle

WATERPROOF ZIPPER LUBRICANT

ML-DB-ZIP-L-10

A 10 ml tube of waterproof zipper lubricant for the protection and maintenance of the waterproof zippers on your Mountain Lab Gear dry bags and other outdoors equipment.



PEAMOUTH DRY BAGS

These compact, waterproof dry bags are so versatile, there's no reason to ever leave them behind when you head out on adventure.

Our 2 litre and 5 litre Peamouth Dry Bags are small and lightweight—perfect for organizing and waterproofing important items like electronic devices, keys, wallets and more. They feature an oval profile for more efficient packing.

The 10 L Peamouth Dry Bag is sized to fit Mountain Lab kits (including first aid kits) for an additional layer of protection from the elements.

These dry bags can go inside a pack, duffel or tunnel bag, or they can also be used on their own for light duty use.

Peamouth Dry Bags are made from lightweight yet durable PU-coated nylon.



2 L PEAMOUTH DRY BAG
ML-DB-PM-2L



5 L PEAMOUTH DRY BAG
ML-DB-PM-5L



10 L PEAMOUTH DRY BAG
ML-DB-PM-10L



BAGS

KOKANEE DRY BAGS

Mountain Lab Kokanee Dry Bags are bigger and tougher than our lightweight Peamouth bags. These stand-alone waterproof dry bags can carry more gear and withstand the abuse of rattling around in the bed of your SxS or truck, or loose in the bottom of your fishing boat.

Kokanee Dry Bags use a tough, 400D single-coated TPU that maintains flexibility even in the cold and won't become brittle and break down over time like PVC.

FEATURES

- Quick access exterior pocket with waterproof zipper
- Shoulder strap(s) for easier carrying
- Roll top closure doubles as an easy grab handle



KOKANEE 15 L DRY BAG
ML-DB-KK-15L

The Kokanee 15 L features a single removable sling strap and a 15 litre volume.



KOKANEE 30 L DRY BAG
ML-DB-KK-30L

The Kokanee 30 L features two backpack-style shoulder straps and a larger, 30 litre volume. The roll top closure may be secured at the sides or at the top to create a quick grab handle.



EMERGENCY



BACKCOUNTRY FIRST AID KIT
MTN-LAB-FA1

Designed specifically for snowmobilers, this premium first aid kit is incredibly well-stocked and highly durable to withstand the rigors of snowmobiling. An absolute necessity in the backcountry, this kit includes 67 essential supplies to help ensure the safety of your group. Featuring a durable, water-resistant neoprene cover, this is what you need in your tunnel bag or pack. Outside dimensions: 20 cm x 15 cm x 5 cm (8" x 6" x 2").

CONTENTS:

- X 4 latex gloves
- X 1 cotton triangular bandage
- X 10 alcohol wipes
- X 6 dressing pads (10cm x 10cm)
- X 4 adhesive dressing pads (6cm x 7cm)
- X 10 adhesive bandages (5.6cm x 1.9cm)
- X 10 adhesive bandages (7.2cm x 1.9cm)
- X 10 adhesive bandages (7.6cm x 2.5cm)
- X 5 butterfly closures
- X 1 medical tape roll (4.5m)
- X 1 elastic bandage roll (4.5m)
- X 1 dressing bandage (18cm x 18cm)
- X 4 sterile gauze pads (7.5cm x 7.5 cm)



EMERGENCY BIVY
MTN-LAB-BVY

If things go sideways and you are forced to spend a night out in the woods the Mountain Lab emergency bivy could be a crucial element for your survival. This extremely lightweight and ultra-compact bivy is made from aluminum coated polyethylene which is designed to reflect up to 90% of your body heat back to you. Take it with you wherever your next adventure leads.

FEATURES:

- Length: 213 cm (84")
- Width: 91 cm (36")
- Weight: 120 g (4.2 oz)
- Packed Size: 10 cm (4") long x 6 cm (2.5") diameter
- Waterproof
- Windproof
- Ultra-compact
- Mountain Lab bright orange emergency colour
- Polyethylene aluminum coated tear resistant material



EXHALE BIVY EMERGENCY BREATHABLE SLEEPING BAG
ML-BVY-BR

Our premium Exhale Bivy is waterproof, windproof and—unlike most other emergency blankets and bivies—is also breathable.

The Exhale Bivy uses a four-ply material developed by NASA to breathe effectively yet still reflect 70-90% of a person's body heat. The advanced material is much stronger than a typical lightweight emergency bivy or blanket.

SPECIFICATIONS:

- Length: 240 cm (94")
- Width: 75 cm (30") at the shoulders
55 cm (22") at the feet
- Weight: 190 g (6.7 oz)
- Packed Size: 16.5 cm (6.5") long
x 10 cm (4") diameter

FEATURES:

- Waterproof, windproof and breathable material
- Sealed seams
- ¼ side zip for easy entry
- Hood with drawstring closure to seal out drafts

BACKUP EMERGENCY STOVE KIT
ML-STO-BKP-KIT

Be prepared for a backcountry emergency with the BACKUP Emergency Stove Kit.

It is an ultra-compact and featherweight stove and pot kit that won't slow down your adventures.

The ability to melt snow, purify water and prepare dehydrated food can be the difference between a good outcome and a tragic one. Throw it in your tunnel bag or emergency kit and forget it's there until you need it.

INCLUDES:

- Lightweight 650 ml titanium pot (113 g) and carry pouch
 - Ergonomic folding handle
 - Stamped volume markings
 - Lid with folding handle and pressure release vent
- Folding iso-butane stove (47 g) and pouch
 - Fast boil times
- Folding titanium spork (19 g) and pouch

The titanium pot is sized to contain the folding stove, folding spork, a standard 100-110 g iso-butane fuel cylinder and small lighter or matches inside, for an ultra-compact, lightweight all-in-one solution.

*Note: iso-butane cylinder and ignition source not included

SPECIFICATIONS

- 98 mm x 101 mm diameter
- Minimum kit weight 179 g
- Including carry pouches 203 g

* ISO-BUTANE FUEL CYLINDER NOT INCLUDED



EMERGENCY

PROTECTION

CHARGER PROTECTION SHIRTS



SHORT SLEEVE
ML-PRO-SSS-S, ML-PRO-SSS-M, ML-PRO-SSS-L, ML-PRO-SSS-XL, ML-PRO-SSS-2XL

The Mountain Lab Protection Short Sleeve Shirt is designed specifically for riders looking for upper body protection that is primarily low-profile, comfortable and lightweight.

Thermoformed EVA is used over the chest and abdomen to provide effective protection that won't limit mobility or trap excessive heat. Thermoformed EVA is also placed on each side, to protect the torso from lateral impacts. The shoulders are protected by CE certified Type A EN1621-1 Level 1 protection shoulder pads.

The shirt material uses Lycra, which is form-fitting, comfortable and will stay in place.

A full-length offset zipper makes putting on and taking off the shirt easier without reducing any protection coverage. A soft zipper garage prevents the zipper car and pull tab from making contact with the skin.



LONG SLEEVE
ML-PRO-LSS-S, ML-PRO-LSS-M, ML-PRO-LSS-L, ML-PRO-LSS-XL, ML-PRO-LSS-2XL

The Protection Long Sleeve Shirt is similar to the short sleeve version, with the addition of elbow protection and form-fitting sleeves that extend to the wrist.

The elbows feature CE certified Type A EN1621-1 Level 1 elbow pad protection.



PRO KNEE GUARD
MTN-LAB-KN2

Mountain Lab PRO Knee Guards use a removable CE Level 1 certified PU piece to protect the knee from direct hits, covered with Kevlar reinforced material for abrasion resistance.

Additional padding is located above and to the sides of the knee.

The knee is fully encircled by comfortable, stretchy synthetic material that resists sweat absorption and odour buildup. Ventilated mesh at the back of the knee guard allows for heat dissipation.

Silicone straps at the upper and lower leg openings help hold the PRO Knee Guard in place, and an adjustable strap at the top of the calf secures the knee guard in position.

- PRO Knee Guards come in two sizes:
- Small to Medium
 - Large to 2XL



HARD KNEE GUARDS
MTN-LAB-KNE

The original Mountain Lab Knee Guard offers the most complete coverage in the lineup, with hard shell protection.

Two separate hard pieces protect the kneecap and full shin (to boot top), with a soft hinge between for good mobility. Additional, ventilated soft padding adds comfort and protection around the edges.

Three wide elasticized straps help the knee guard stay in place and allow a comfortable, customized fit. Hook and loop securement is easily adjustable and makes the Knee Guard quick to put on and take off.

Mountain Lab Knee Guards are universally adjustable, one-size-fits-all.



PRO LITE KNEE GUARD
ML-KN-PL

PRO LITE Knee Guards are suitable for a wide variety of activities, including snowmobiling, dirt bike trails riding, hard enduro, mountain biking and more.

- PROTECTION**
- Low profile CE Level 1 protective PU knee and upper shin piece
 - Ventilated protective foam surrounds CE 1 piece
 - Additional padding above the knee and on medial and lateral sides
- PERFORMANCE**
- Vented mesh back and sides for superior heat dissipation
 - Pre-curved shape for best fit in riding position
 - Low profile minimizes bulk
 - Silicone straps keep knee guard in position

- | | |
|--|---------------------|
| COMFORT | SIZING |
| • Stretchy, synthetic materials enhance comfort and prevent bacteria growth and odor | • Small/Medium |
| • Three wide, comfortable straps for customized fit | • Medium/Large |
| • Material cut out behind knee prevents bunching when knees are bent | • Large/Extra Large |

PROTECTION

HEATED



HEATED GLOVE LINERS

MTN-LAB-HGL
XS - 2XL

Say goodbye to cold fingers with these battery-powered, heated glove liners. Flexible heating elements wrap around all five fingers for warmth, and a built-in controller provides three heat settings to dial in the right amount of heat. The fabric is a soft, stretchy polyester/spandex blend for a comfortable fit with unimpaired dexterity.

Each glove liner is powered by a lightweight, rechargeable 1800 mAh battery inserted into the cuff.

For use without gloves, the thumb and forefinger are compatible with touch screens.

HEAT SETTING	TEMPERATURE	DURATION
Low	38°C (100°F)	5 hours
Medium	45°C (113°F)	3 hours
High	55°C (131°F)	1.5 hours

HEATED GLOVE LINERS SPARE BATTERY

MTN-LAB-HGL-BA

One spare 1800 mAh battery for the Heated Glove Liners. Comes as a single unit. NOTE: Two batteries are required to power a pair of Heated Glove Liners.



HEATED GLOVE LINERS REPLACEMENT CHARGER

MTN-LAB-HGL-CH

A replacement charge adapter and cables for one pair of Mountain Lab Heated Glove Liners.



HEATED SOCKS

Mountain Lab heated socks provide warmth on demand, right where you need it. A low-profile heating element completely encircles the toes and forefoot area. The element is powered by a lightweight battery housed at the top of the cuff, where it won't interfere with tall boot cuffs.

The socks use a 50% wool, 50% polyester blend for continuous warmth and comfort, even in damp conditions or when the socks are not powered on. Left and right markings on the socks help with easy identification.

REMOTE CONTROL HEATED SOCKS

ML-HS-RC-SIZE

The Remote Control Heated Socks can be operated individually by using a button on the sock battery itself (located at the cuff of the sock) or together with use of the included remote control.

The remote control allows the sock heat to be turned on or off, and the heat level to be adjusted between three intensity settings: Low, Medium and High.



Remote control heated socks spare batteries (2) and remote

ML-HS-RC-BA

Two spare batteries and one remote for the Remote Control Heated Socks. Comes as a pair to power both socks.

Remote control heated socks replacement charging cable

ML-HS-RC-CH

A replacement USB to dual micro-USB splitter charging cable (can be used with any standard household 5V USB charging adapter) for one pair of Remote Control Heated Socks.



HEATED

SIZE	CANADA/US WOMEN SHOE SIZE	CANADA/US MEN SHOE SIZE
SMALL	4-6	-
MEDIUM	7-9	6-8
LARGE	10-12	9-11
X-LARGE	-	12-14

BLUETOOTH HEATED SOCKS

ML-HS-BT-SIZE

The Bluetooth Heated Socks use the Mountain Lab smartphone app to control the heated socks through Bluetooth connectivity. Each sock can be controlled individually for heat intensity and turned on and off.

The Bluetooth Heated Socks can alternatively be controlled by a button located on the cuff of the sock, for use without the app.



Bluetooth heated socks spare battery

ML-HS-BT-BA

One spare battery for the Bluetooth Heated Socks. Comes as a single unit. Note: Two batteries are required to power a pair of Bluetooth Heated Socks.

Bluetooth heated socks replacement charging adapter

ML-HS-BT-CH

A replacement charging adapter and splitter charging cable for one pair of Bluetooth Heated Socks.

WEARABLES



BACKCOUNTRY TOQUE
MTN-LAB-TBC

100% Acrylic
Black/Grey



TOWNIE TOQUE
MTN-LAB-TTW

100% Acrylic
Navy Blue



HEAVY-DUTY TOQUE
MTN-LAB-THD

30% Wool/35% Nylon/35% Acrylic
Heather Grey



GOGGLE COVER

Mountain Lab Goggle Covers are designed to quickly throw on and protect your goggle lenses during transport. Made of super stretchy, quick drying microfiber. One size fits most.



STEALTH
MTN-LAB-GSK1



BRAAAP
MTN-LAB-GSK2



MOUNTAIN
MTN-LAB-GSK3



MOUNTAIN SLEDDER1
MTN-LAB-GSK5



CLASSIC BALACLAVA
MTN-LAB-BLC

Our newest balaclava is also the most simple. It features a classic, oval-shaped opening for those who don't care for an overlapping hinged hood.



LIGHTWEIGHT BALACLAVA
MTN-LAB-BL1

The Lightweight Balaclava adds an overlapping hinged hood to help the user to customize the perfect amount of facial coverage without any material bunching.

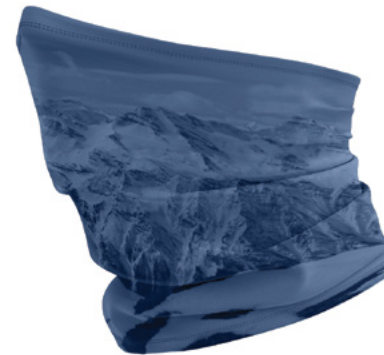


MIDWEIGHT BALACLAVA
MTN-LAB-BL2

Also featuring a hinged hood, the Midweight Balaclava uses a wind-stopper fabric in the nose, cheeks, chin and neck areas to provide additional protection for the skin on very cold days. A mesh breathing port allows for good air exchange while protecting the lips from the cold.



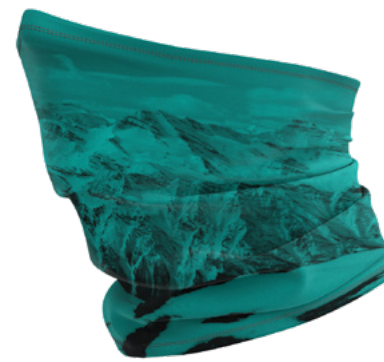
SUNSET
MTN-LAB-NTS



DAYBREAK
MTN-LAB-NTD



BLACK
MTN-LAB-NTB



MOUNTAINS
MTN-LAB-NTM

MULTIFUNCTIONAL NECK TUBE

The Multifunctional Neck Tube will be your new best friend. This versatile piece can be worn as a face covering for ripping trails or around the neck to seal out snow and cold drafts in the mountains.

The soft, midweight polyester/spandex blend is super-stretchy with a brushed inside, providing a very comfortable fit for long days of riding.

WEARABLES



SLATWALL FLOOR DISPLAY RACK
ML-DISP-SLW-FLR

The Mountain Lab Slatwall Floor Display Rack is a tall, H-shaped floor display rack on caster wheels for easy placement.

- RACK DIMENSIONS:**
- 200 cm (78 in.) tall useable slatwall
 - 60 cm (24 in.) wide centre sections
 - 60 cm (24 in.) wide sides

The centre slatwall sections are reinforced with metal inserts for increased durability when loaded with shelves and heavy items.

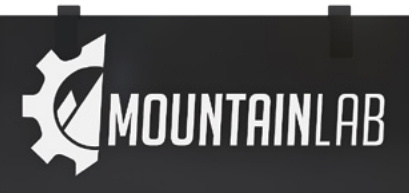
Each Display Rack comes with 4 Mountain Lab branded black, powder-coated metal shelves, 20 Mountain Lab branded black metal hooks and a logo sign.



SLATWALL DISPLAY HOOKS 10" (5 PCS)
ML-DISP-SLW-HK10

Mountain Lab branded Slatwall Display Hooks can be used with the Mountain Lab Slatwall Floor Display Rack or with any standard slatwall display to add more hanging capability.

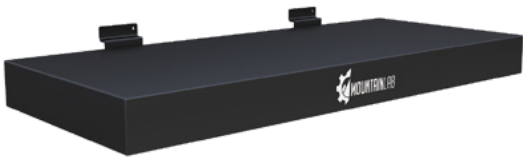
These black, powder-coated metal hooks are printed with the Mountain Lab logo, and are sold in packages of 5 pieces.



SLATWALL LOGO SIGN
ML-DISP-SLW-LGSN

The Mountain Lab branded Slatwall Logo Sign can be mounted on any standard slatwall to help customers easily identify and locate Mountain Lab products in the retail showroom.

The logo sign is 46 cm (18 in.) wide by 20 cm (7.75 in.) tall.



SLATWALL DISPLAY SHELVES 24" (2 PCS)
ML-DISP-SLW-SH24

Mountain Lab branded Slatwall Display Shelves can be used to add additional versatility to the Slatwall Floor Display Rack, or used separately with existing slatwall display panels.

These are 60 cm wide (24 in.) black, powder-coated metal printed with Mountain Lab logo, and are packaged in pairs.



GOGGLE COVER DISPLAY
MTN-LAB-DIS3



COUNTERTOP DISPLAY
MTN-LAB-DIS1



FLOOR DISPLAY 2.0
MTN-LAB-DIS5

WE MAKE IT
RIGHT.

We built our brand around the idea of getting you geared up for good times gone sideways. That's why we offer a **2-year warranty on all our product**, so that you can continue to let the good times roll.