

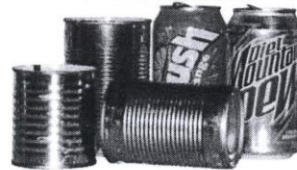
How Do I Recycle?



Aluminum and Tin

Examples of what is accepted:

- Fruit & vegetable cans
- Beverage cans
- Metal lids from glass jars and bottles
- Foil and foil pans/trays
- Pet food tins
- Coffee cans



To avoid injury to your collector, please place lids from cans inside the can, and pinch the top of the can to trap the lid inside. All food items must be empty and rinsed. Labels left on is OK

Plastic

Examples of what is accepted:

- Pop bottles
- Juice bottles
- Milk jugs
- Shampoo bottles
- Detergent bottles
- Ziploc bags



Milk and food products must be rinsed.

How do I know if my plastic bottle is recyclable?

There is a number stamped on the bottle usually on the bottom. The number is surrounded by the recycling symbol .

Paper and Newspaper

Examples of what is accepted:

- Brown paper sacks
- Newspaper
- Magazines
- Wrapping paper
- White office paper
- Computer paper
- Junk mail
- Mixed paper



Cardboard

Examples of what is accepted:

- Corrugated cardboard
- Toy boxes
- Waxed food cartons
- Shoe boxes
- Toilet paper & Paper towel rolls
- Pop and beer boxes
- Detergent boxes
- Tissue boxes
- Cereal boxes



Cardboard boxes must be flattened. All Styrofoam and plastic liners, inserts, wrappings and staples must be removed from cardboard boxes.

No food stains on boxes (example-pizza boxes-grease).

Items That We Do Not Accept

Glass:

Glass will not be accepted.

Metal:

- Aluminum foil
- License plates
- Pie plates
- Paint cans
- Batteries
- Aerosol cans
- Coat hangers
- Cooking pots and pans.

Miscellaneous:

- Styrofoam
- Wicker wood
- Containers used for chewing tobacco.
- Bubble wrap
- Food items
- Kleenex
- Oil jugs
- Diapers
- Any unmarked plastics
- Feminine products

Hazardous Materials:

No hazardous materials of any kind.

Gill Hauling, Inc. offers this service and reserves the right to refuse any recyclables we see fit. Refused recyclables will be disposed of in the garbage truck.

- All recyclables need to be in 65 gallon recycling cart. If you have an 8 gallon recyclable bin please put plastic and tin recyclables in a clear plastic bag then in container.
- Do not use black bags.
- Wash out all food and beverage containers, even one dirty item contaminates the whole load.
- Boxes need to be flattened in order to save room in the truck.