

**SWITCHBOARD GENERAL NOTES -  
PRODUCT DESCRIPTION & RATINGS**

**Power System Data**

480Y/277V 3Ph 4W 60Hz / 3 Phase Wye  
Solidly Grounded  
System Short Circuit Current Rating: 65kA RMS  
Incoming Section 1 Cable Through the Bottom Left of Lineup

**Bus System Data**

3000A Silver/Copper Main Bus

**Enclosure Data**

Type 3R Free Standing  
Exterior Paint Color: ANSI 49  
Front Accessibility Only  
Required Handling: Rollers  
Strip Heater w. Thermostat & Humidistat  
Rodent Barriers  
1.5H Corrosion Resist Base Channels  
Steel Bottom Closure Plate

**Estimated Shipping Weight**

Shipping Split 1	1256.00	lbs
Shipping Split 2	1180.00	lbs
Complete Lineup	2364.00	lbs

**Code Standards**

U.L. Deadfront and suitable for use as a Service Entrance when not more than six (6) disconnecting means are provided

**Rating Nameplates**

ST1- Service Entrance - Section Bus 3000A  
ST2 - Deadfront - Section Bus 3000A

**PRODUCT INFORMATION**

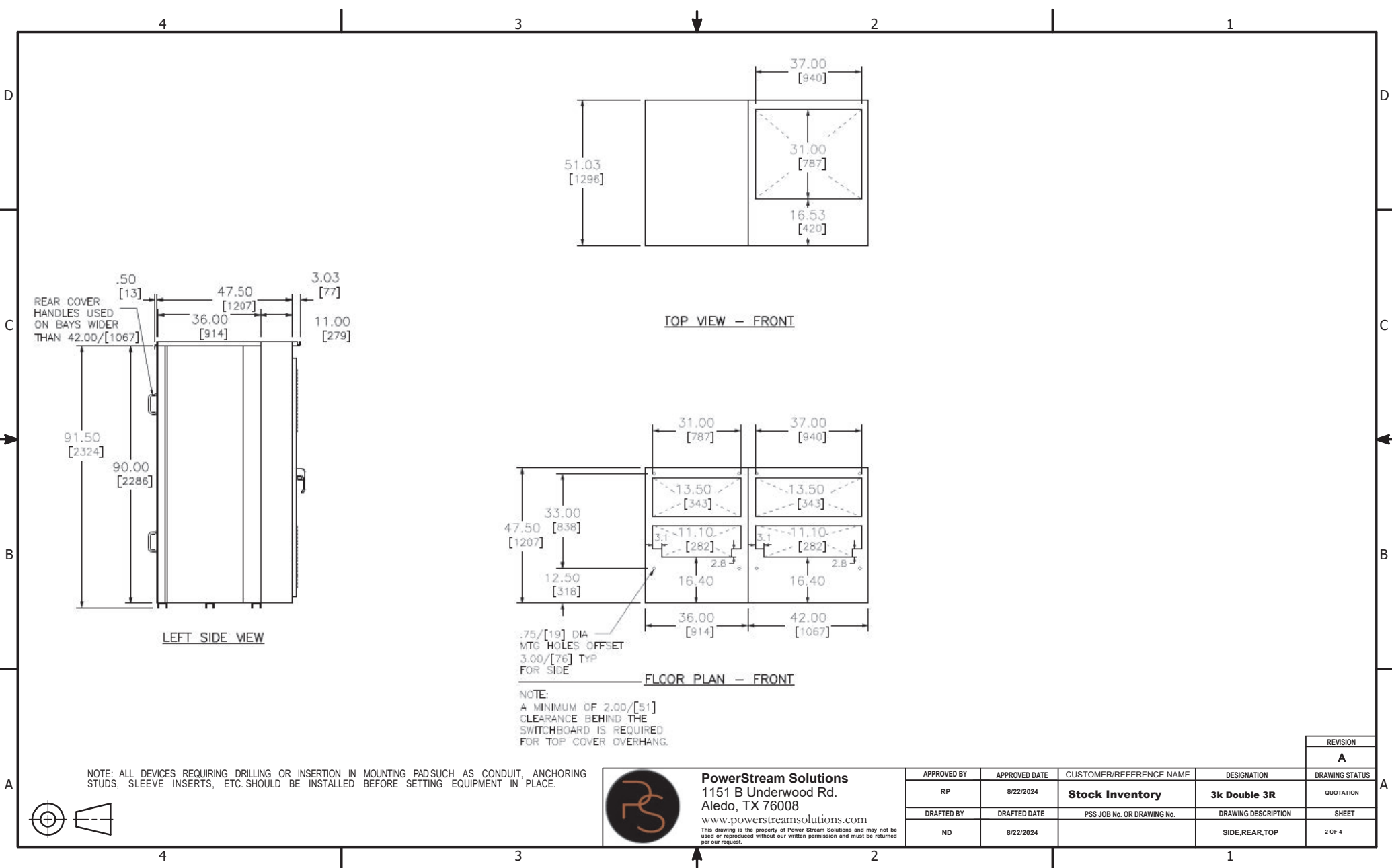
**Product Accessories/Options**

24V Trip Unit Display Power  
Locally Mounted ERMS Switch

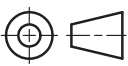
**PowerStream Solutions**  
1151 B Underwood Rd.  
Aledo, TX 76008  
www.powerstreamolutions.com

This drawing is the property of Power Stream Solutions and may not be used or reproduced without our written permission and must be returned per our request.

APPROVED BY	APPROVED DATE	CUSTOMER/REFERENCE NAME	DESIGNATION	DRAWING STATUS
RP	8/22/2024	<b>Stock Inventory</b>	<b>3k Double 3R</b>	QUOTATION
DRAFTED BY	DRAFTED DATE	PSS JOB No. OR DRAWING No.	DRAWING DESCRIPTION	SHEET
ND	8/22/2024		FRONT ELEVATION	1 OF 4



NOTE: ALL DEVICES REQUIRING DRILLING OR INSERTION IN MOUNTING PADSUCH AS CONDUIT, ANCHORING STUDS, SLEEVE INSERTS, ETC. SHOULD BE INSTALLED BEFORE SETTING EQUIPMENT IN PLACE.

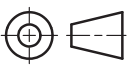
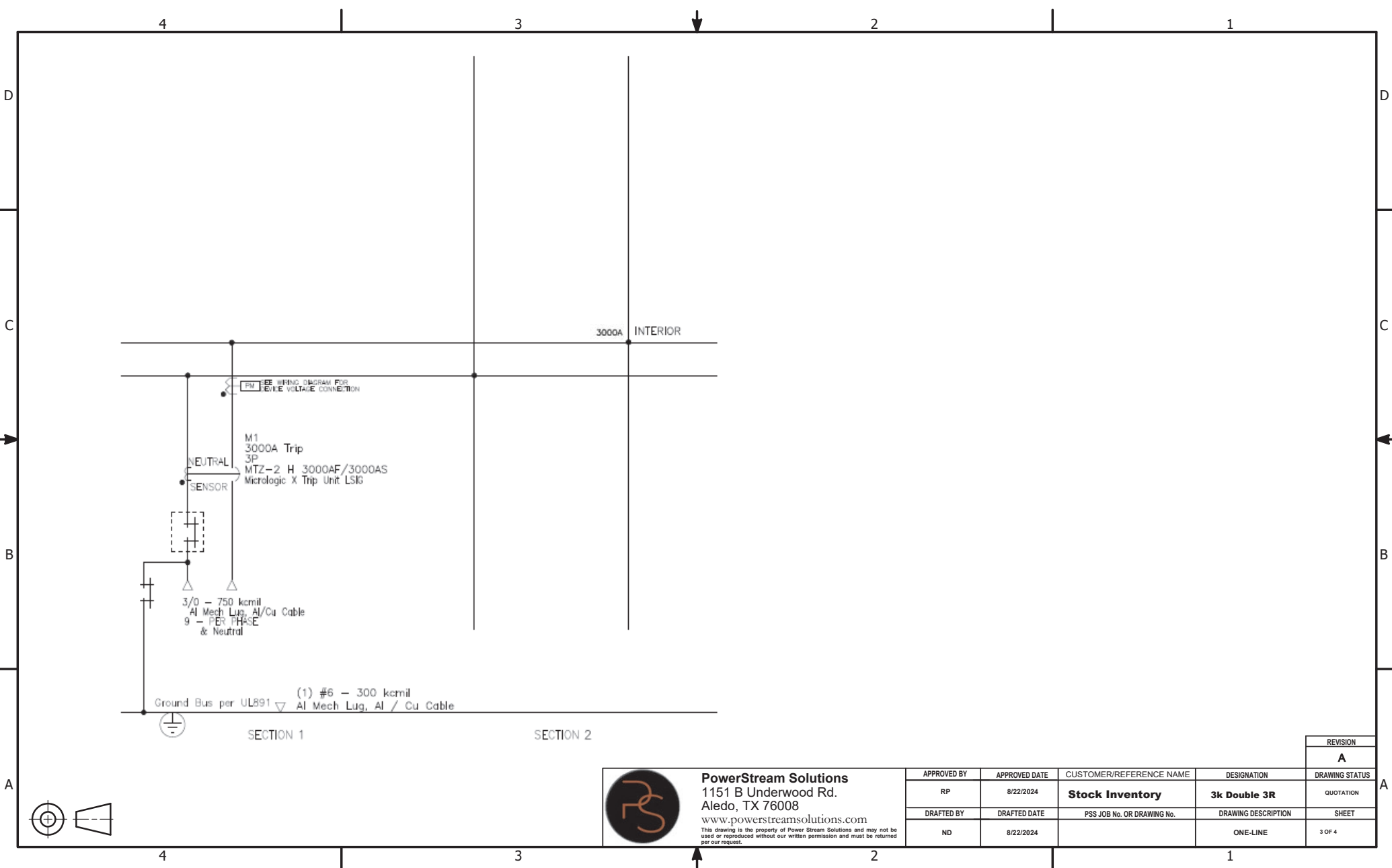



**PowerStream Solutions**  
1151 B Underwood Rd.  
Aledo, TX 76008  
www.powerstreamolutions.com

This drawing is the property of Power Stream Solutions and may not be used or reproduced without our written permission and must be returned per our request.

APPROVED BY	APPROVED DATE	CUSTOMER/REFERENCE NAME	DESIGNATION	DRAWING STATUS
RP	8/22/2024	<b>Stock Inventory</b>	<b>3k Double 3R</b>	QUOTATION
DRAFTED BY	DRAFTED DATE	PSS JOB No. OR DRAWING No.	DRAWING DESCRIPTION	SHEET
ND	8/22/2024		SIDE,REAR, TOP	2 OF 4

REVISION
<b>A</b>



**PowerStream Solutions**  
 1151 B Underwood Rd.  
 Aledo, TX 76008  
[www.powerstreamolutions.com](http://www.powerstreamolutions.com)

This drawing is the property of Power Stream Solutions and may not be used or reproduced without our written permission and must be returned per our request.

APPROVED BY	APPROVED DATE	CUSTOMER/REFERENCE NAME	DESIGNATION	REVISION
RP	8/22/2024	<b>Stock Inventory</b>	<b>3k Double 3R</b>	<b>A</b>
ND	8/22/2024	PSS JOB No. OR DRAWING No.	DRAWING DESCRIPTION	DRAWING STATUS
			ONE-LINE	3 OF 4

4

3

2

1

D

D

C

C

B

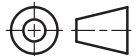
B

A

A

SECT NO	CKT NO	IMD /GMD CONFIG	DEVICE /FRAME RATING	TRIP AMP	FUSE /TRIP	#P	DESIGNATION	N/P	LUG/WIRE INFORMATION				ACCESSORIES / NOTES
									QTY	PHASE WIRE RANGE	QTY	NEUT WIRE RANGE	
1	-	-	Ship Heater	-	-	-	-	-	-	-	-	-	SHR
1	M1	FIX	MTZ-2 H 3000AF/3000AS	3000A	X-LSIG	3P		No	9	3/0 - 750 kcmil	9	3/0 - 750 kcmil	CF,SDE1,OF4,EN1 PLA,PM5K,ERMS,D9
2	-	-	Ship Heater	-	-	-	-	-	-	-	-	-	SHR

LEGEND	
D9	Energy Reduction Maintenance Settings
EN1	MTZ Breaker Power Supply
ERMS	Energy Reduction Maintenance SW
GF	Ground Fault
OF4	4 Form C Breaker Aux Contacts
PLA	Padlock Attachment-Fixed
PM5K	Power Meter PM55XX
SDE1	Over Current Trip Switch
SHR	Strip Heater



**PowerStream Solutions**  
 1151 B Underwood Rd.  
 Aledo, TX 76008  
[www.powerstreamolutions.com](http://www.powerstreamolutions.com)  
This drawing is the property of Power Stream Solutions and may not be used or reproduced without our written permission and must be returned per our request.

REVISION				
<b>A</b>				
APPROVED BY	APPROVED DATE	CUSTOMER/REFERENCE NAME	DESIGNATION	DRAWING STATUS
RP	8/22/2024	<b>Stock Inventory</b>	<b>3k Double 3R</b>	QUOTATION
DRAFTED BY	DRAFTED DATE	PSS JOB No. OR DRAWING No.	DRAWING DESCRIPTION	SHEET
ND	8/22/2024		ELECTRICAL COMP. SCHEDULE	4 OF 4

4

3

2

1