



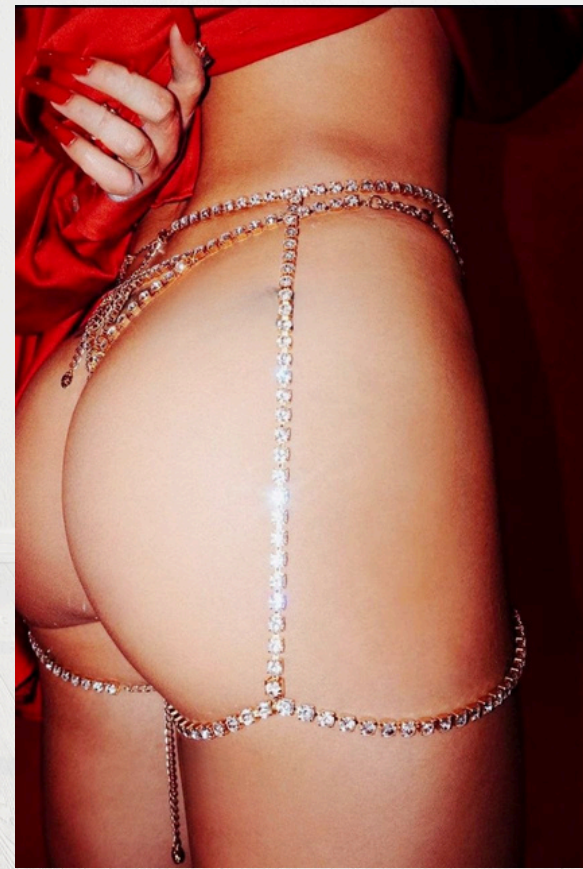
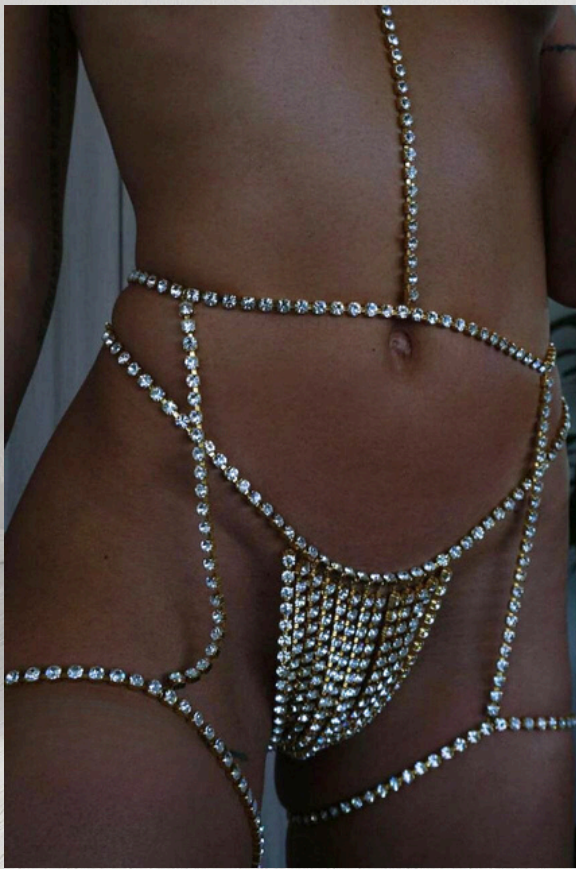
SwansWear Catalog

LUXURY WEARABLE JEWELRY LINGERIE



HANDCRAFTED IN
TURKEY
WHOLESALE COLLECTION

2026 COLLECTION



@swanswearco

Luxury Wearable Jewelry Designed to **Sell Itself**

SwansWear produces premium wearable jewelry designed to complement luxury lingerie collections, catering to all boutiques, chain stores, and wholesale channels involved in women's apparel.

Our products offer a **niche, high-margin** category that **sells itself** without the need for extra **marketing**, thanks to their high display appeal.

■ **SwansWear Production**

Our entire collection is produced entirely **by hand**, focusing on comfort, aesthetics, and ease of sale.

Who We Are

At **SwansWear**, we oversee every stage of the production process — from transforming raw stones into finished elements to final product assembly.

Based in Turkey, we manage global production and worldwide shipping with short lead times and flexible manufacturing capacity..

We currently serve as the manufacturer and supplier for more than **10** established brands, offering a level of quality, reliability, and after-sales support that sets us apart from low-cost Asian manufacturers.

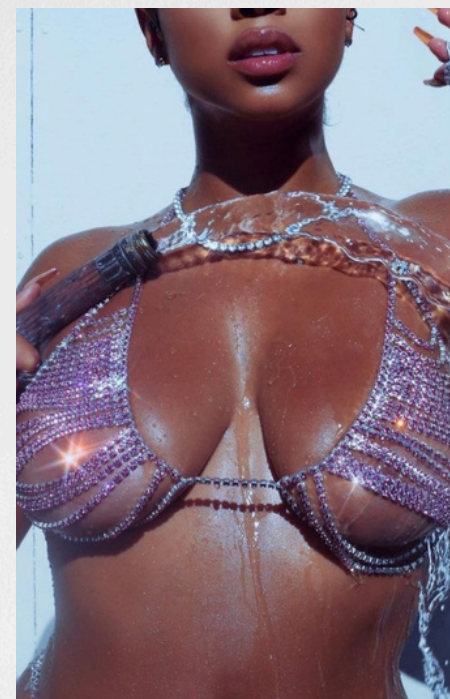
Our production team is composed of over 90% women, and we proudly support female craftsmanship and employment throughout our operations.



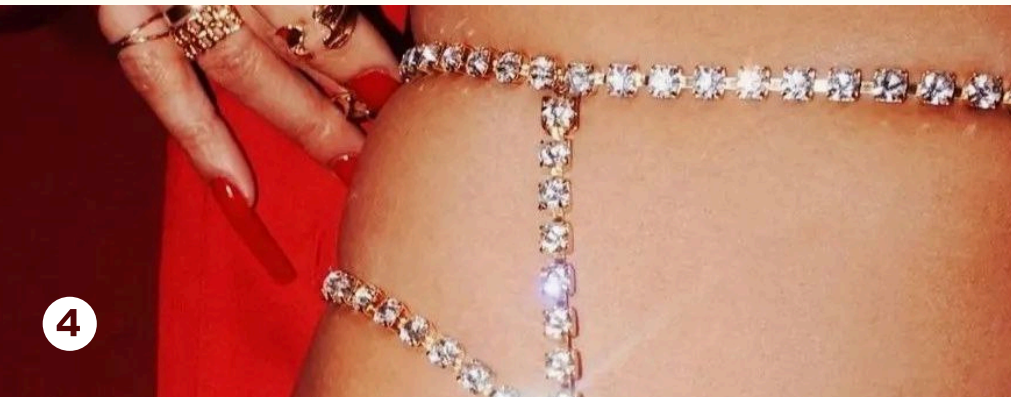
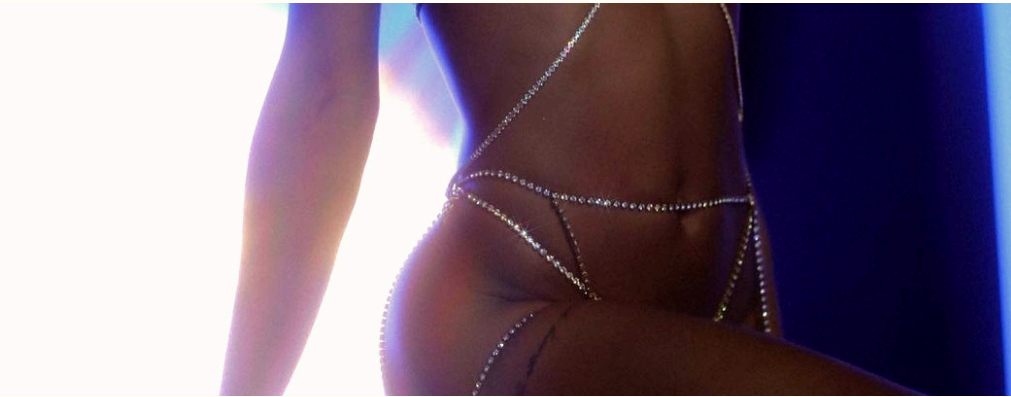
IMPRESS YOUR CUSTOMERS
WITH OUR DESIGNS

SWANSWEAR

3



DIANA BRALET



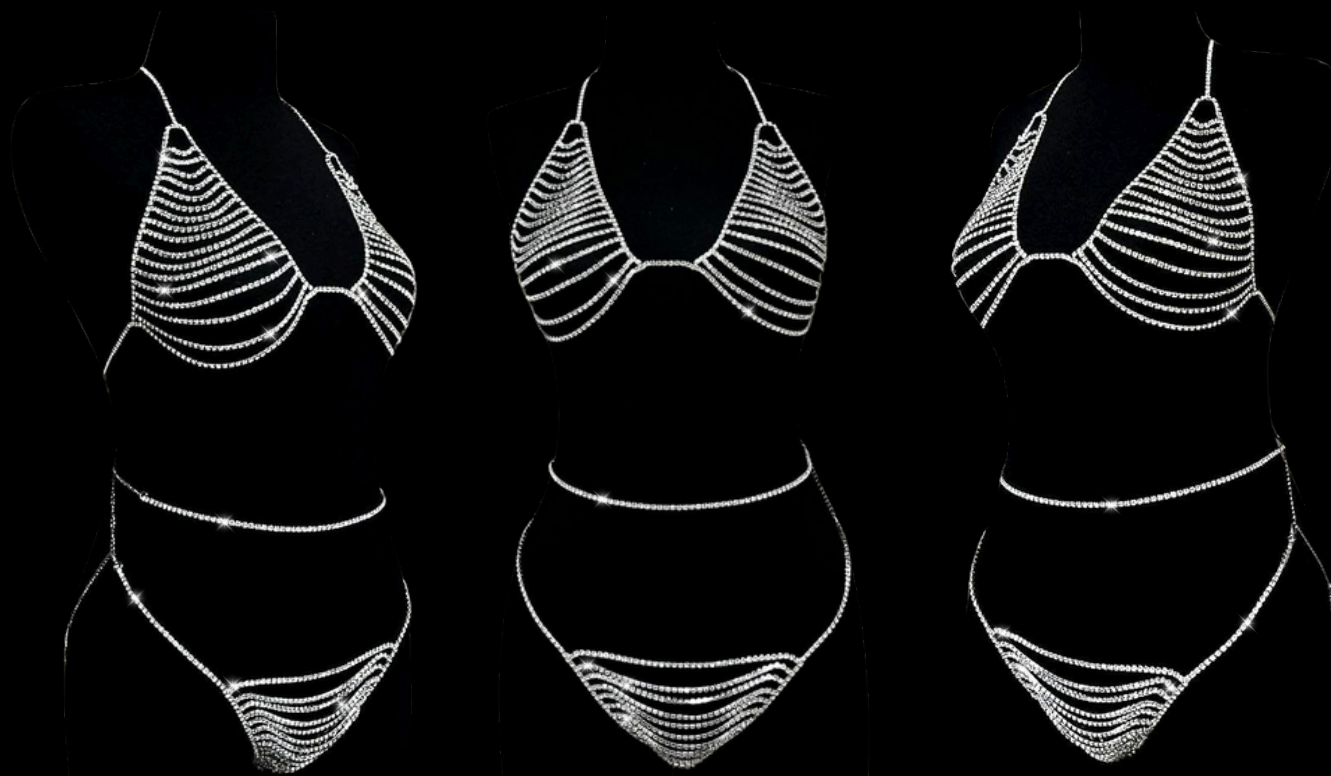
WHY

SWANSWEAR IS PROFITABLE

- ✓ A niche, high-demand product category with premium positioning
- ✓ Strong shelf and window appeal that accelerates sell-through
- ✓ Adjustable sizing eliminates leftover **stock** risk
- ✓ No mandatory set (*XXS to XXL*) purchasing
- ✓ **High** margins enabled by direct manufacturing
- ✓ Flexible **low-MOQ** options for custom and exclusive designs

SwansWear products simplify inventory management while maximizing profitability

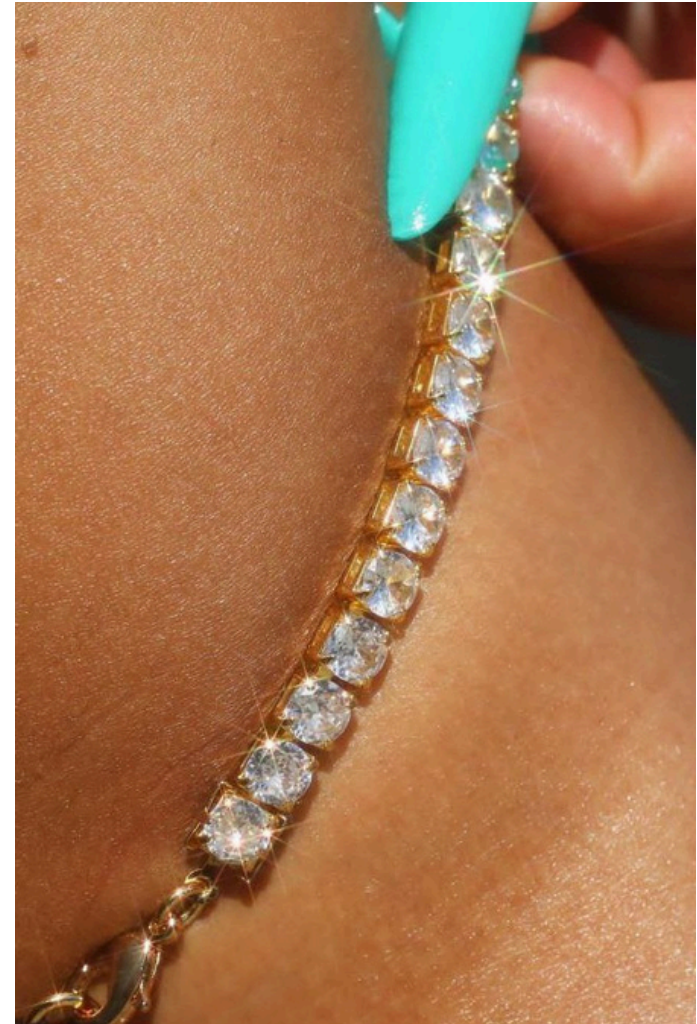
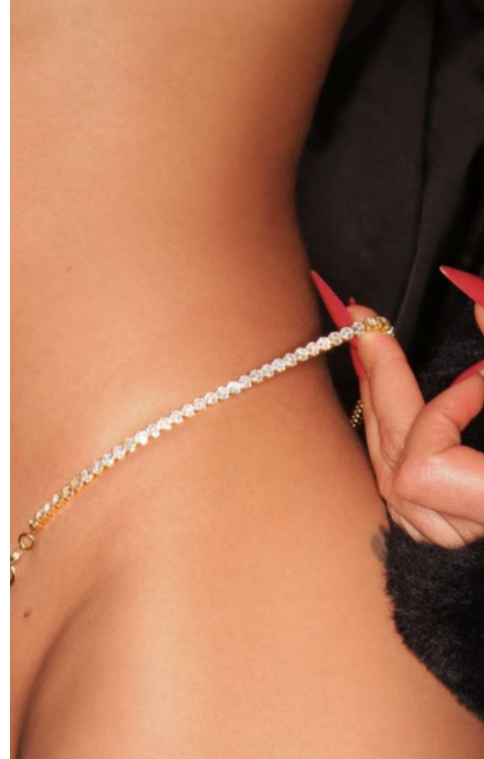




DIANA SET

Thanks to its adjustable design, we can supply our business partners with products without the need for bulk purchasing.

You can cut the extension chains we send you according to S-M-L sizes and meet your current stock needs, or you can offer the product for sale as a single size or adjustable size.



DIANA THONG

Diana Tanga is made from tightly set stones rather than loose ones for a more sparkling look.



JESS SET

It is designed to perfectly fit every body type thanks to the adjustable extension chains located in the waist and leg areas.

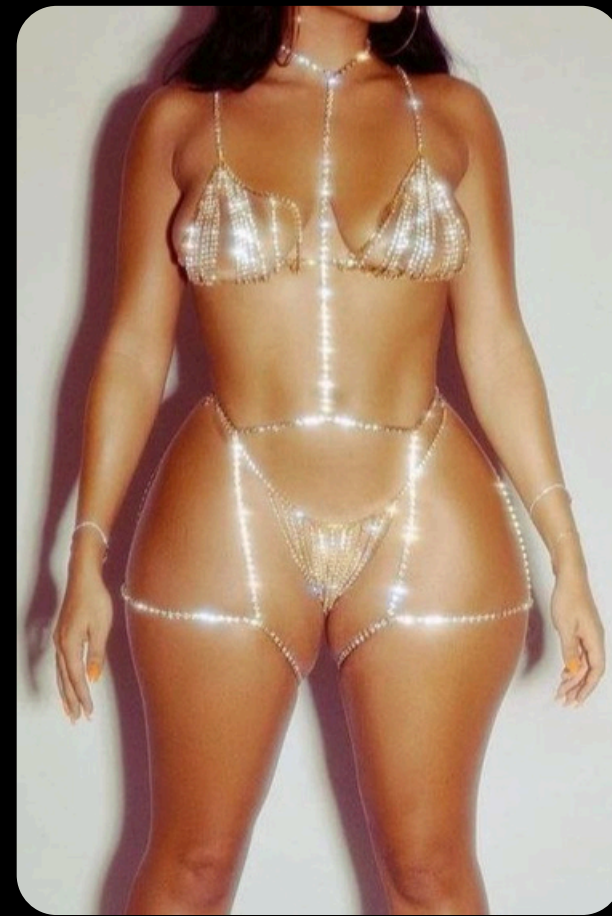


SWANSWEAR

JESS SET

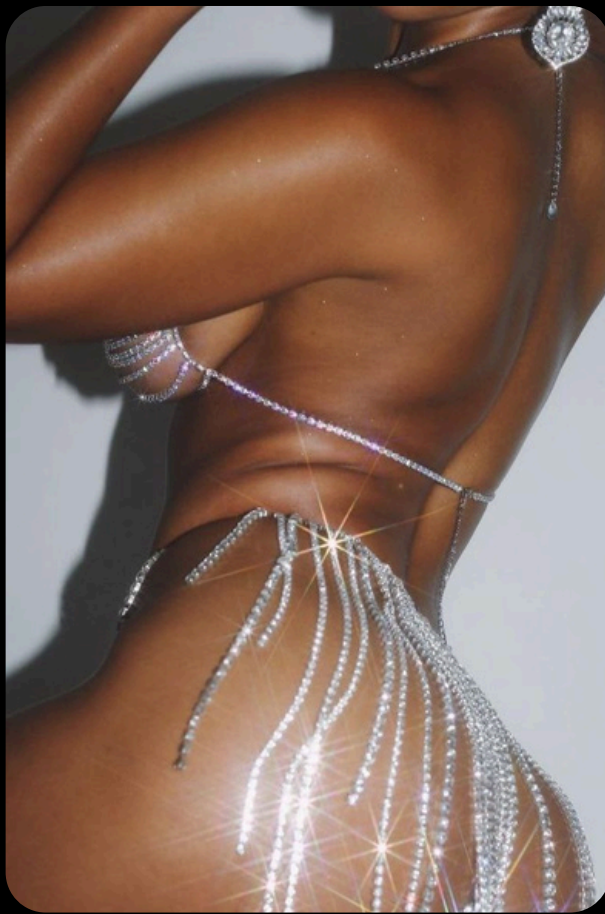
Our products are designed to captivate your customers at first glance and spark their curiosity to see how elegantly they accentuate the silhouette.

They are an excellent choice for those seeking a touch of luxury in their lingerie collection.



Key Advantages

- Adjustable fit from **XXS** to **XXL**
- No skin irritation, tarnishing, or discomfort
- **Handmade** craftsmanship
- Suitable for set or single-item sales
- High visual impact with minimal **stock** risk



Private Label & Custom Production

Private label production is available for orders of 300 sets or more, including **logo branding** and **customized packaging**.

We also offer flexible **low-MOQ** custom production options based on demand.



SILVER GARTER

It is designed to perfectly fit every body type thanks to the adjustable extension chains located in the waist and leg areas.





Logistics & Worldwide Delivery

We ship worldwide via **road**, **air**, or **sea** freight.

Available delivery terms include EX-W, CIF, DAP, and DDP.

Through multiple logistics partnerships, we offer highly **competitive** shipping rates and reliable delivery timelines.



VIVIAN BRALETTE

Our cup-free diamond bralette, suitable for use as underwear or lingerie accessories, adds a touch of luxury to high-end lingerie collections with its elegant design and sophisticated sparkle.



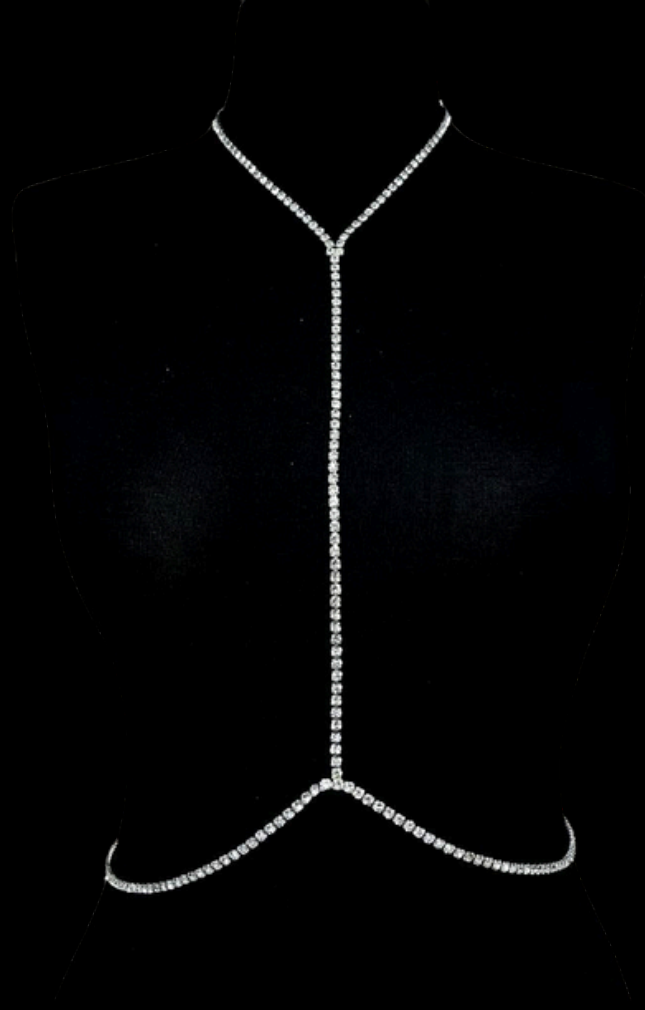
Premium Packaging & Damage Guarantee

Each product is packaged in a **black**, glossy, acetate-lid presentation box.

For international shipments, products are securely packed with **protective** materials and shipped in reinforced wholesale **cartons**.

A **damage-free** delivery guarantee covers all shipments.

Any transit-related damage is fully **covered** by our company.



ELOISE

It is our body accessory that customers prefer as a complement to their set orders.

All products are made from washable stone and materials, produced with raw materials suitable for skin contact.



Wholesale Information

Minimum order quantities vary by product model and are specified in the **price list**. Orders may be placed as sets or individual items — no additional declaration is required as long as **MOQ** conditions are met.



SKYLA BRALETTE



Our cup-free diamond bralette, suitable for use as underwear or lingerie accessories, adds a touch of luxury to high-end lingerie collections with its elegant design and sophisticated sparkle.

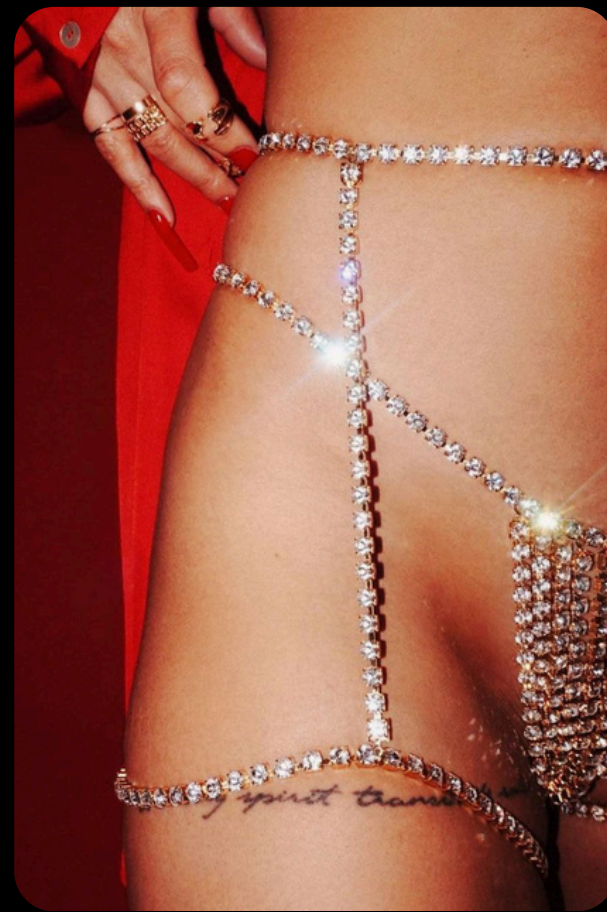


Production Capacity

Regular production rate: 500 sets per week

Example:

2000 sets ≈ 4 weeks | 5000 sets ≈ 10 weeks



Payment Terms

50% advance required to **initiate** production

50% balance payable **before** shipment.

After approval of finished and packaged product photos



Contact Us



@swanswearco



www.swanswear.com



+90 543 262 74 17



Sahabiye, Dalaman St. 38015
Kayseri/**Turkey**

A woman with long blonde hair is shown from the back, wearing a two-piece bikini. The bikini is heavily embellished with numerous long, thin chains of small, light-colored beads or crystals that hang down from the top and bottom pieces, creating a shimmering, fringe-like effect. The background is plain white.

Product Catalog 2026

www.swanswear.com