



Certificate of Analysis
Compliance Test

Client Information:

Virgin Hemp Farms
PO Box 129
Milton, Louisiana 70558

Batch # 0001
Batch Date: 2024-11-13
Extracted From: Ethanol

Test Reg State: Louisiana

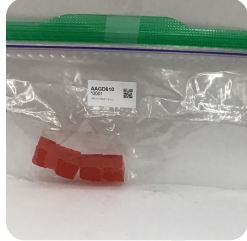
Production Facility: Virgin Hemp Farms
Production Date: 2024-11-13

Order # VIR241115-010002
Order Date: 2024-11-15
Sample # AAGD610
Serving Number: 8.00000

Sampling Date: 2024-11-18
Lab Batch Date: 2024-11-18
Completion Date: 2024-11-22

Initial Gross Weight: 27.000 g
Net Weight: 25.189 g

Number of Units: 1
Net Weight per Package: 24578.000 mg
Net Weight per Serving: 3072.25 mg



Product Image

**Potency
Tested**

Delta 8/Delta 10 Potency 13 - (LCUV)

Specimen Weight: 1525.800 mg

Tested
SOP13.001 (LCUV)

Pieces For Panel: 8

Analyte	LOD (%)	LOQ (%)	Result (mg/g)	(%)
Delta-9 THC	1.30E-5	0.0015	1.440	0.144
Delta-8 THC	2.60E-5	0.0015	0.030	0.003
CBC	1.80E-5	0.0015	<LOQ	<LOQ
CBD	5.40E-5	0.0015	<LOQ	<LOQ
CBDA	1.00E-5	0.0015	<LOQ	<LOQ
CBDV	6.50E-5	0.0015	<LOQ	<LOQ
CBG	2.48E-4	0.0015	<LOQ	<LOQ
CBGA	8.00E-5	0.0015	<LOQ	<LOQ
CBN	1.40E-5	0.0015	<LOQ	<LOQ
Delta-10 THC	3.00E-6	0.0015	<LOQ	<LOQ
Delta6a10a-THC	8.47E-5	0.0015	<LOQ	<LOQ
THCA-A	3.20E-5	0.0015	<LOQ	<LOQ
THCV	7.00E-6	0.0015	<LOQ	<LOQ
Total Active CBD			<LOQ	<LOQ
Total Active THC			1.470	0.147

Potency Summary

Total Delta 8 per Serving 0.003% 0.0922 mg	Total Delta 10 per Serving None Detected
Delta 9 THC per Serving 0.144% 4.424 mg	Total Active CBD per Serving None Detected
Total CBG per Serving None Detected	Total CBN per Serving None Detected
Total Cannabinoids per Serving 0.147% 4.516 mg	Total Active CBD Per Package None Detected
Total Active THC per Serving 0.147% 4.516 mg	Total Active THC Per Package 0.147% 36.13 mg
Delta 9 THC per Package 0.144% 35.392 mg	

Aixa Sun Lab Director/Principal Scientist
D.H.Sc., M.Sc., B.Sc., MT (AAB)



Definitions and Abbreviations used in this report: Total Active CBD = CBD + (CBD-A * 0.877) * Total CBDV = CBDV + (CBDVA * 0.867), Total Delta-9 THC = Delta-9 THC + THCA, Total Active THC = Total Delta-9 THC + Delta6a10a-THC + Delta-8 THC + Delta-10 THC + Delta-8 THC-O-Acetate + THC-O-Acetate + Delta-10 THC-O-Acetate, Total THCV = THCV + (THCVA * 0.877), CBG Total = (CBGA * 0.878) + CBG, CBN Total = (CBNA * 0.876) + CBN, Total CBC = CBC + (CBCA * 0.877), Total THC-O-Acetate = Delta 8 THC-O-Acetate + Delta 9 THC-O-Acetate, Total THCP = Delta8-THCP + Delta9-THCP, Total Cannabinoids = Total percentage of cannabinoids within the sample. (mg/ml) = Milligrams per Milliliter, LOQ = Limit of Quantitation, LOD = Limit of Detection, Dilution = Dilution Factor, (ppb) = Parts per Billion, (%) = Percent, (cfu/g) = Colony Forming Unit per Gram, (µg/g) = Microgram per Gram, (ppm) = Parts per Million, (µg/g), (aw) = Water Activity, (mg/Kg) = Milligram per Kilogram. ACS uses simple acceptance criteria. Passed - Analyte/microbe is not detected or is at the level below the action limit per LA rule R.S., 40:4(A)(13), R.S. 3:1483, R.S. 40:604. Failed - Analyte/microbe is at the level that equal or above the action limit per LA rule R.S., 40:4(A)(13), R.S. 3:1483, R.S. 40:604 Sample not received via laboratory sampling.

This report shall not be reproduced, without written approval, from ACS Laboratory. The results of this report relate only to the material or product analyzed. Test results are confidential unless explicitly waived otherwise. ACS Laboratory is accredited to the ISO/IEC 17025:2017 Standard.



Certificate of Analysis
Compliance Test

Client Information:

Virgin Hemp Farms
PO Box 129
Milton, Louisiana 70558

Batch # 0001
Batch Date: 2024-10-01
Extracted From: Ethanol

Test Reg State: Louisiana

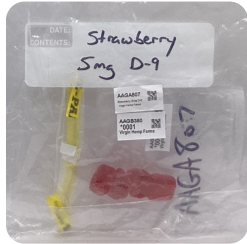
Production Facility: Virgin Hemp Farms
Production Date: 2024-10-01

Order # VIR241022-010001
Order Date: 2024-10-22
Sample # AAGB380

Sampling Date: 2024-10-25
Lab Batch Date: 2024-10-25
Completion Date: 2024-10-29

Initial Gross Weight: 40.794 g

Serving Number: 1.00000



Product Image

Heavy Metals Passed	Pesticides Passed	Residual Solvents Passed	Pathogenic Microbiology Passed	Microbiology Petrifilm Passed
-------------------------------	-----------------------------	------------------------------------	--	---

Microbiology TYM (Petrifilm/Plating) - LA
Specimen Weight: 999.200 mg

Dilution Factor: 8.000

Analyte	LOQ (cfu/g)	Action Level (cfu/g)	Result (cfu/g)
Yeast/Mold	10000	10000	<1000

Passed
SOP13.003 (Petrifilm)

Pathogenic Microbiology - SE (MicroArray)

Specimen Weight: 1048.700 mg

Dilution Factor: 47.678

Analyte	Result (cfu/g)	Analyte	Result (cfu/g)
Salmonella	Absence in 1g	STEC E. Coli	Absence in 1g

Passed
SOP13.019 (Micro Array)

Aixa Sun Lab Director/Principal Scientist
D.H.Sc., M.Sc., B.Sc., MT (AAB)



Definitions and Abbreviations used in this report: Total Active CBD = CBD + (CBD-A * 0.877), *Total CBDV = CBDV + (CBDVA * 0.867), Total Delta-9 THC = Delta-9 THC + THCA, Total Active THC = Total Delta-9 THC + Delta-8-THC + Delta-10-THC + Delta-8-THC + Delta-10-THC + Delta-8-THC-O-Acetate + THC-O-Acetate + Delta-10-THC-O-Acetate, Total THCV = THCV + (THCVA * 0.877), CBG Total = (CBGA * 0.878) + CBG, CBN Total = (CBNA * 0.876) + CBN, Total CBC = CBC + (CBCA * 0.877), Total THC-O-Acetate = Delta-8-THC-O-Acetate + Delta-9-THC-O-Acetate, Total THCP = Delta-8-THCP + Delta-9-THCP, Total Cannabinoids = Total percentage of cannabinoids within the sample, (mg/ml) = Milligrams per Milliliter, LOQ = Limit of Quantitation, LOD = Limit of Detection, Dilution = Dilution Factor, (ppb) = Parts per Billion, (%) = Percent, (cfu/g) = Colony Forming Unit per Gram, (µg/g) = Microgram per Gram, (ppm) = Parts per Million, (µg/g), (aw) = Water Activity, (mg/Kg) = Milligram per Kilogram. ACS uses simple acceptance criteria. Passed - Analyte/microbe is not detected or is at the level below the action limit per LA rule R.S., 40:4(A)(13), R.S. 3:1483, R.S. 40:604. Failed - Analyte/microbe is at the level that equal or above the action limit per LA rule R.S., 40:4(A)(13), R.S. 3:1483, R.S. 40:604 Sample not received via laboratory sampling.

This report shall not be reproduced, without written approval, from ACS Laboratory. The results of this report relate only to the material or product analyzed. Test results are confidential unless explicitly waived otherwise. ACS Laboratory is accredited to the ISO/IEC 17025:2017 Standard.



Certificate of Analysis
Compliance Test

Client Information:

Virgin Hemp Farms
PO Box 129
Milton, Louisiana 70558

Batch # 0001
Batch Date: 2024-10-01
Extracted From: Ethanol

Test Reg State: Louisiana

Production Facility: Virgin Hemp Farms
Production Date: 2024-10-01

Order # VIR241022-010001
Order Date: 2024-10-22
Sample # AAGB380

Sampling Date: 2024-10-25
Lab Batch Date: 2024-10-25
Completion Date: 2024-10-29

Initial Gross Weight: 40.794 g
Serving Number: 1.00000

H Heavy Metals - LA
Specimen Weight: 246.000 mg

Passed
SOP13.048 (ICP-MS)

Dilution Factor: 203.252

Analyte	LOD (ppm)	LOQ (ppm)	Action Level (ppm)	Result (ppm)	Analyte	LOD (ppm)	LOQ (ppm)	Action Level (ppm)	Result (ppm)
Arsenic (As)	.00483	0.1	10	<LOQ	Lead (Pb)	0.0058	0.1	10	<LOQ
Cadmium (Cd)	.00064	0.1	4.1	<LOQ	Mercury (Hg)	.01176	0.1	2	<LOQ

I Residual Solvents - LA (CBD)
Specimen Weight: 8.300 mg

Passed
SOP13.039 (GCMS)

Dilution Factor: 1.000

Analyte	LOD (ppm)	LOQ (ppm)	Action Level (ppm)	Result (ppm)	Analyte	LOD (ppm)	LOQ (ppm)	Action Level (ppm)	Result (ppm)
1,1-Dichloroethane	0.0094	0.16	8	<LOQ	Heptane	0.0013	1.39	500	<LOQ
1,2-Dichloroethane	0.0003	0.04	5	<LOQ	Hexane	0.068	1.17	10	<LOQ
Acetone	0.015	2.08	5000	<LOQ	Isopropyl alcohol	0.0048	1.39	500	<LOQ
Acetonitrile	0.06	1.17	410	<LOQ	Methanol	0.0005	0.69	3000	9.913
Benzene	0.0002	0.02	1	<LOQ	Methylene chloride	0.0029	2.43	600	<LOQ
Butanes	0.4167	2.5	800	<LOQ	Pentane	0.037	2.08	5000	<LOQ
Chloroform	0.0001	0.04	60	<LOQ	Propane	0.031	5.83	2100	<LOQ
Ethanol	0.0021	2.78	5000	92.062	Toluene	0.0009	2.92	1	<LOQ
Ethyl Acetate	0.0012	1.11	5000	<LOQ	Total Xylenes	0.0001	2.92	1	<LOQ
Ethyl Ether	0.0049	1.39	5000	<LOQ	Trichloroethylene	0.0014	0.49	80	<LOQ
Ethylene Oxide	0.0038	0.1	5	<LOQ					

Aixia Sun
Aixia Sun Lab Director/Principal Scientist
D.H.Sc., M.Sc., B.Sc., MT (AAB)

Definitions are found on page 1

This report shall not be reproduced, without written approval, from ACS Laboratory. The results of this report relate only to the material or product analyzed. Test results are confidential unless explicitly waived otherwise. ACS Laboratory is accredited to the ISO/IEC 17025:2017 Standard.





Certificate of Analysis
Compliance Test

Client Information:

Virgin Hemp Farms
PO Box 129
Milton, Louisiana 70558

Batch # 0001
Batch Date: 2024-10-01
Extracted From: Ethanol

Test Reg State: Louisiana

Production Facility: Virgin Hemp Farms
Production Date: 2024-10-01

Order # VIR241022-010001
Order Date: 2024-10-22
Sample # AAGB380

Sampling Date: 2024-10-25
Lab Batch Date: 2024-10-25
Completion Date: 2024-10-29

Initial Gross Weight: 40.794 g
Serving Number: 1.00000

Pesticides - LA
Specimen Weight: 586.100 mg

Passed
SOP13.007 (LCMS/GCMS)

Dilution Factor: 2.560

Analyte	LOD (ppm)	LOQ (ppm)	Action Level (ppm)	Result (ppm)	Analyte	LOD (ppm)	LOQ (ppm)	Action Level (ppm)	Result (ppm)
Abamectin	4.3500E-4	0.009	0.3	<LOQ	Hexythiazox	4.5000E-5	0.0096	2	<LOQ
Acephate	4.6700E-4	0.0096	5	<LOQ	Imazalil	6.3900E-4	0.0096	0	<LOQ
Acequinocyl	8.0100E-4	0.0096	4	<LOQ	Imidacloprid	1.5900E-4	0.0096	3	<LOQ
Acetamiprid	8.0000E-5	0.0096	5	<LOQ	Kresoxim Methyl	2.6800E-4	0.0096	1	<LOQ
Aldicarb	1.2400E-4	0.0096	0	<LOQ	Malathion	4.1000E-4	0.0096	5	<LOQ
Azoxystrobin	6.8300E-4	0.0096	40	<LOQ	Metalaxyl	7.4900E-4	0.0096	15	<LOQ
Bifenazate	8.2000E-5	0.0096	5	<LOQ	Methiocarb	9.9000E-5	0.0096	0	<LOQ
Bifenthrin	1.2100E-4	0.0096	0.5	<LOQ	Methomyl	1.2100E-4	0.0096	0.1	<LOQ
Boscalid	1.5300E-4	0.0096	10	<LOQ	methyl-Parathion	3.0650E-3	0.0096	0	<LOQ
Captan	8.9660E-3	0.048	5	<LOQ	Mevinphos	1.3700E-3	0.0096	0	<LOQ
Carbaryl	1.1800E-4	0.0096	0.5	<LOQ	Myclobutanil	5.7100E-4	0.0096	9	<LOQ
Carbofuran	1.7800E-4	0.0096	0	<LOQ	Naled	8.3000E-5	0.0096	0.5	<LOQ
Chlorantraniliprole	5.2000E-5	0.0096	40	<LOQ	Oxamyl	1.2300E-4	0.0096	0.2	<LOQ
Chlorfenapyr	3.1210E-3	0.0096	0.1	<LOQ	Pacllobutrazol	1.2300E-4	0.0096	0	<LOQ
Chlorpyrifos	2.7100E-4	0.0096	0	<LOQ	Pentachloronitrobenzen (Quintozene)	5.1400E-3	0.0096	0.2	<LOQ
Clofentezine	1.1900E-4	0.0096	0.5	<LOQ	Permethrin	7.1800E-4	0.0096	20	<LOQ
Coumaphos	1.2900E-4	0.0096	0	<LOQ	Phosmet	3.0100E-4	0.0096	0.2	<LOQ
Cyfluthrin	7.7300E-3	0.048	1	<LOQ	Piperonylbutoxide	2.1700E-4	0.0096	8	<LOQ
Cypermethrin	8.8700E-4	0.0096	1	<LOQ	Prallethrin	1.3650E-3	0.0096	0.4	<LOQ
Daminozide	1.7970E-3	0.0096	0	<LOQ	Propiconazole	2.5900E-4	0.0096	20	<LOQ
Diazinon	1.3280E-3	0.0096	0.2	<LOQ	Propoxur	1.4700E-4	0.0096	0	<LOQ
Dichlorvos	4.6500E-4	0.0096	0	<LOQ	Pyrethrins	2.5600E-4	0.0014	1	<LOQ
Dimethoate	3.6600E-4	0.0096	0	<LOQ	Pyridaben	5.9000E-5	0.0096	3	<LOQ
Dimethomorph	2.7200E-4	0.0096	20	<LOQ	Spinetoram	3.4600E-4	0.0096	3	<LOQ
Ethoprophos	1.9200E-4	0.0096	0	<LOQ	Spinosad	2.8000E-5	0.00239	3	<LOQ
Etofenprox	1.1600E-4	0.0096	0	<LOQ	Spiromesifen	2.9100E-4	0.0096	12	<LOQ
Etoxazole	5.7000E-4	0.0096	1.5	<LOQ	Spirotetramat	1.4100E-4	0.0096	13	<LOQ
Fenhexamid	1.0110E-3	0.0096	10	<LOQ	Spiroxamine	1.1900E-4	0.0096	0	<LOQ
Fenoxycarb	1.6900E-4	0.0096	0	<LOQ	Tebuconazole	1.3400E-4	0.0096	2	<LOQ
Fenpyroximate	1.3900E-4	0.0096	2	<LOQ	Thiacloprid	3.9700E-4	0.0096	0	<LOQ
Fipronil	6.0500E-4	0.0096	0.1	<LOQ	Thiamethoxam	1.0400E-4	0.0096	4.5	<LOQ
Fonicamid	1.2800E-4	0.0096	2	<LOQ	Trifloxystrobin	8.8000E-5	0.0096	30	<LOQ
Fludioxonil	5.2100E-4	0.0096	30	<LOQ					

Aixia Sun
Aixia Sun Lab Director/Principal Scientist
D.H.Sc., M.Sc., B.Sc., MT (AAB)

Definitions are found on page 1

This report shall not be reproduced, without written approval, from ACS Laboratory. The results of this report relate only to the material or product analyzed. Test results are confidential unless explicitly waived otherwise. ACS Laboratory is accredited to the ISO/IEC 17025:2017 Standard.

