



Tag us in your pictures on Instagram

@6_sided_lights

www.6sidedlights.co.uk

Email: info@6sidedlights.co.uk

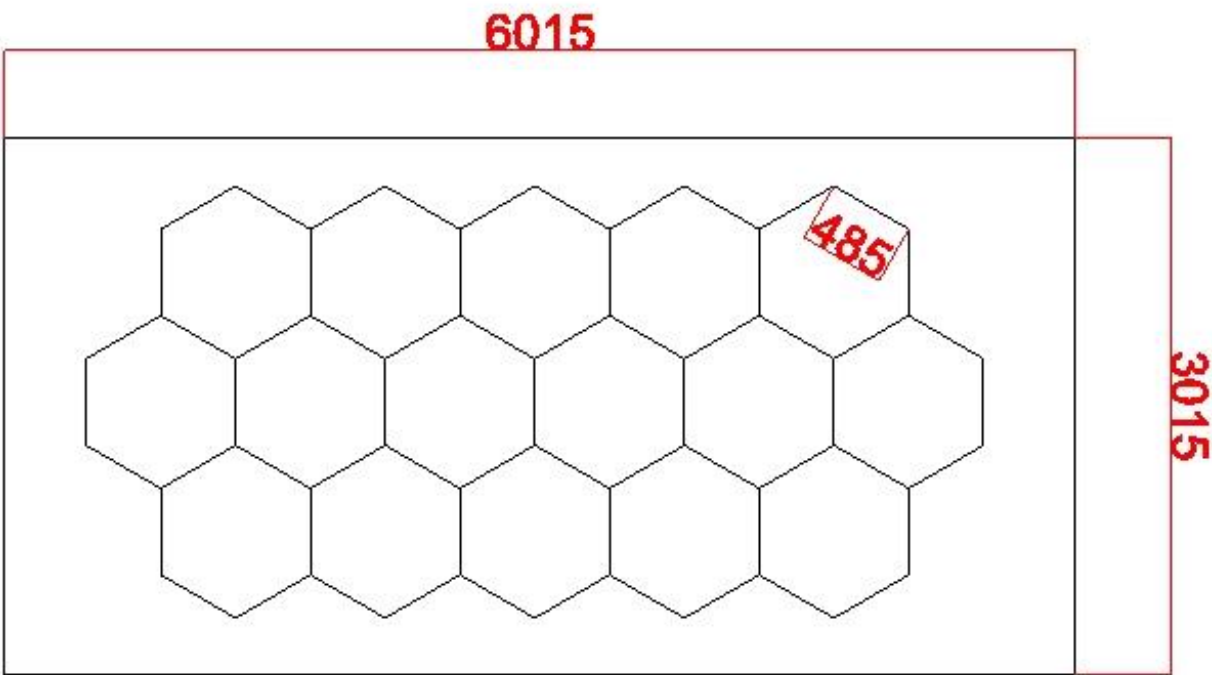
Install Instructions



Please read these instructions before assembling this product, & keep for subsequent reference

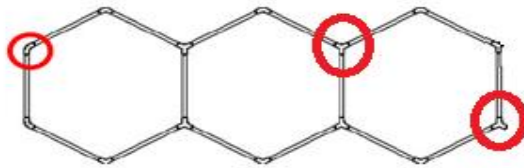
Design Sketch:

*Approximate measurements shown

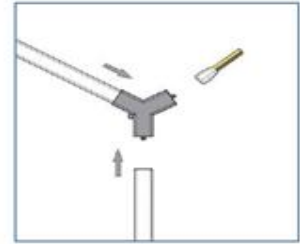


Series	Name	Specification	QTY	Unit
1	Tubes	L:440*20mm Power 6W	64	Pieces
2	Tubes	L:1185*20mm Power 14W	14	Pieces
3	Connectors	120° 2-Way	16	Pieces
4	Connectors	120° 3-Way	32	Pieces
5	Connectors	90° 3 Way T	1	Pieces
6	Connectors	90° 2 Way	3	Pieces
7	Connectors	180° 2 Way	12	Pieces
8	Cable	1-End	3	Pieces
9	Manual	-	1	Pieces

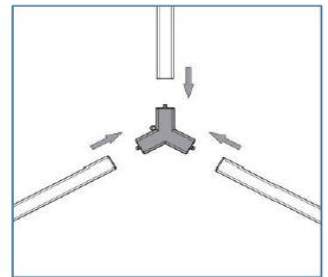
Connect the tubes in series as follows (example):



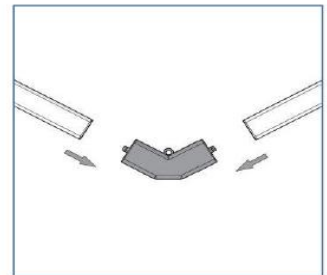
1. The 3  connect as follow picture



2. Other 3-end connection connect as follow picture



3. Other 2-end connection connect as follow picture



Caution!!

Please be careful while connecting tubes. Connectors are copper and could be damaged if careless. Do not force them together. If they will not connect, try a different tube/connector.

The outer Y connectors are for the power lead! These can be placed where convenient for your requirements on the outer edge of the design. For your design you should have 2 outer Y Connectors on the hexagons to aid load.

For the outside boarder please use the T Connector at a convenient place to connect the power lead. This can be on a corner or straight.

Connection should be made via provided cable wired into lighting circuit. A professional electrician is recommended.

RED = L

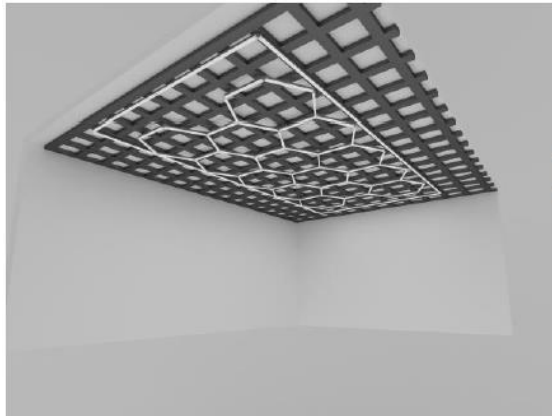
BLUE = N

YELLOW = E

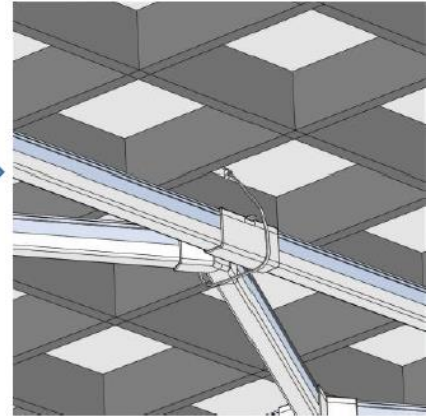
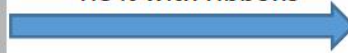
Depending on your circuit breaker you may experience the power being cut. This is due to the inrush of current to the LED's. A different circuit breaker might be required to deal with the initial surge of current. Please refer to a professional electrician.

How to install to ceiling:

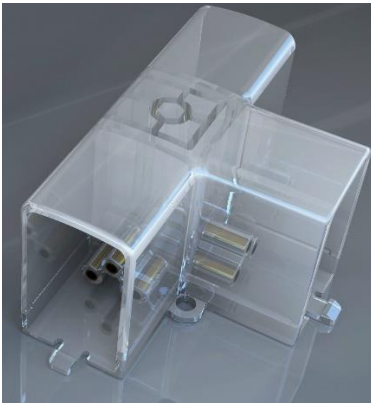
Grid roof:



Tie it with ribbons



Flat Roof:



Use hole on connectors to suspend or screw into flat ceiling/wall to secure.

Technical Data:

Power: AC230V/580Watts

Current:5A

Width:20mm

Luminous Flux 110-120lm/w

CRI: >90

CCT: 6500K (White)

Material: Aluminium & PVC Diffuser