



Tag us in your pictures on Instagram

@6\_sided\_lights

[www.6sidedlights.co.uk](http://www.6sidedlights.co.uk)

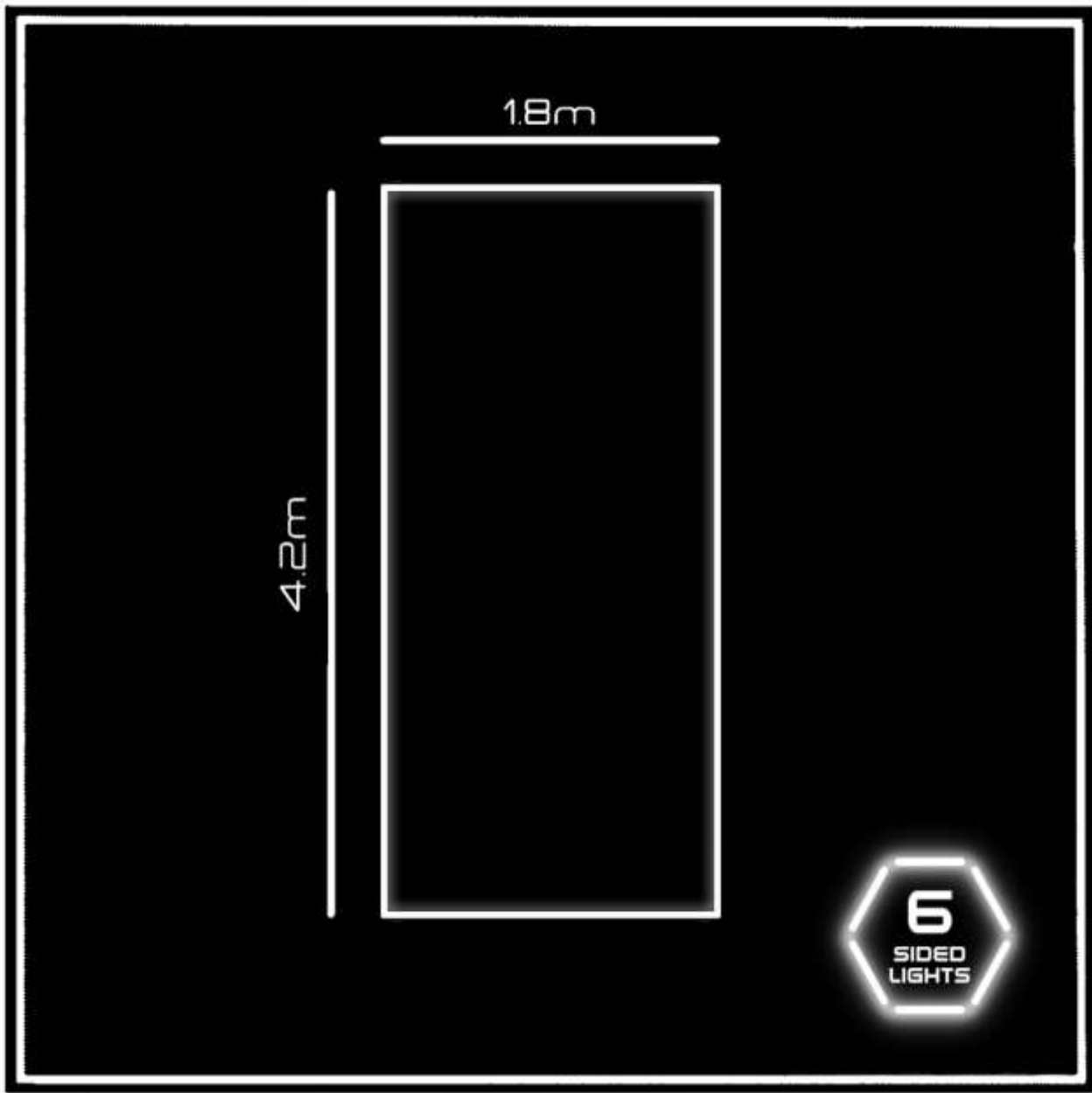
Email: [info@6sidedlights.co.uk](mailto:info@6sidedlights.co.uk)

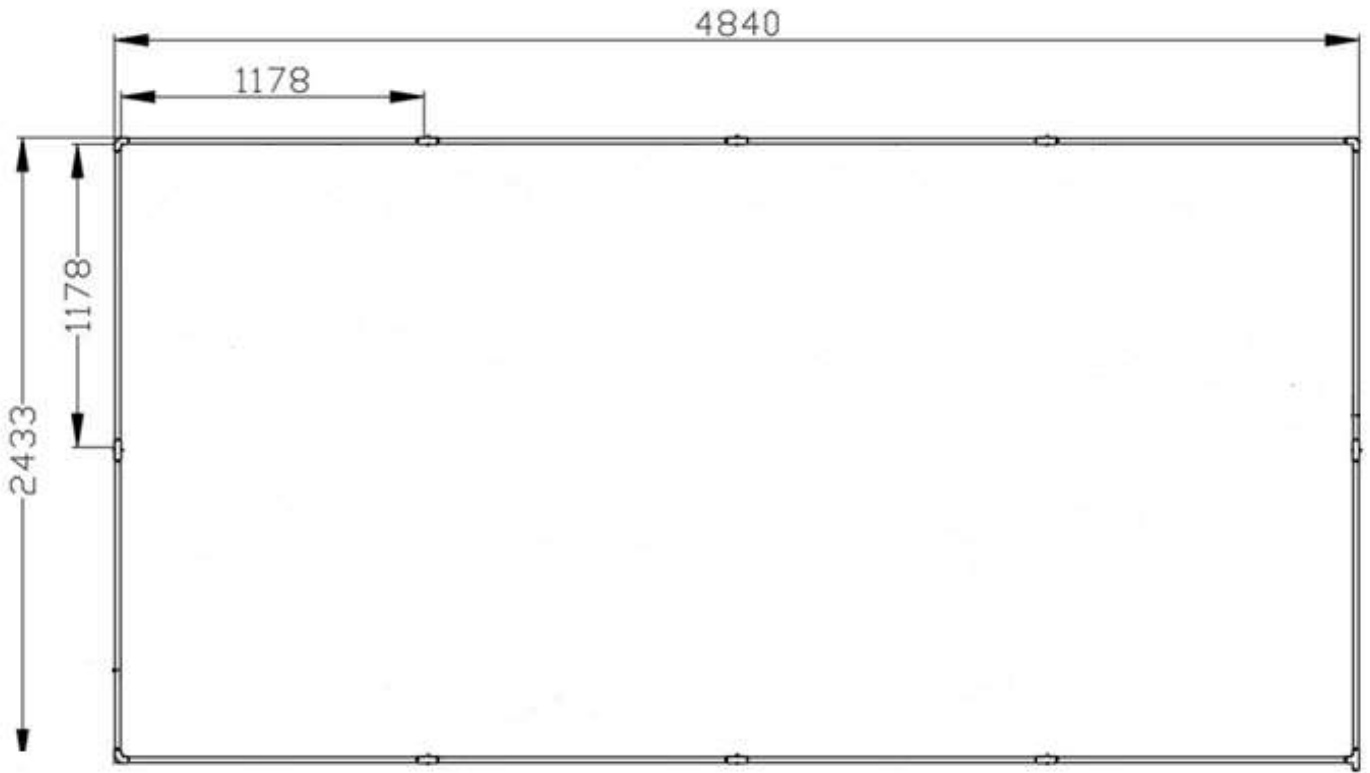
# Install Instructions



**Please read these instructions before assembling this product, & keep for subsequent reference**

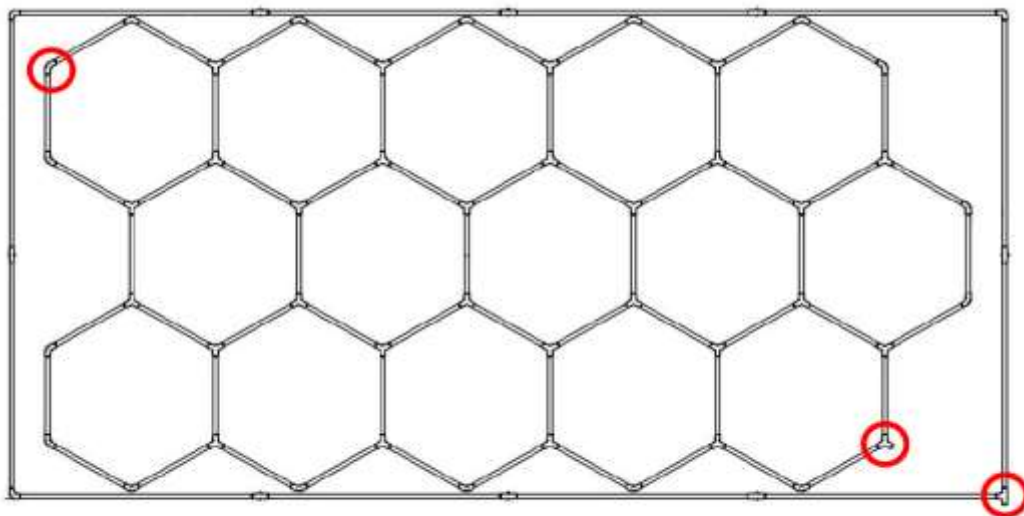
# Design Sketch:



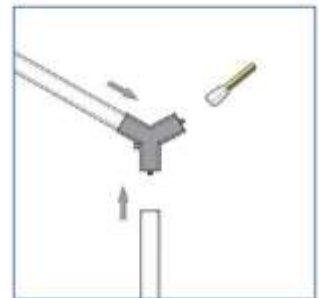


Series	Name	Specification	QTY	Unit
1	Tubes	L:1185*20mm Power 16W	10	Pieces
2	Tubes	L:585*20mm Power 6W	2	Pieces
3	Connectors	180° 2-Way	6	Pieces
3	Connectors	T 3-Way	1	Pieces
4	Connectors	90° 2-Way	4	Pieces
5	Cable	1-End	1	Pieces
6	Manual	-	1	Pieces

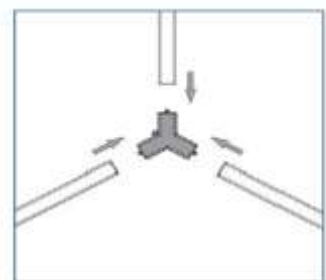
# Connect the tubes in series as follows (example):



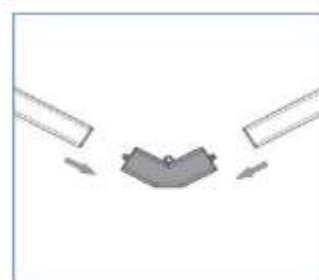
1. The 3  connect as follow picture



2. Other 3-end connection connect as follow picture



3. Other 2-end connection connect as follow picture



## Caution!!

Please be careful while connecting tubes. Connectors are copper and could be damaged if careless. Do not force them together. If they wont connect, try a different tube/connector.

Connection should be made via provided cable wired into lighting circuit. A professional electrician is recommended.

RED = L

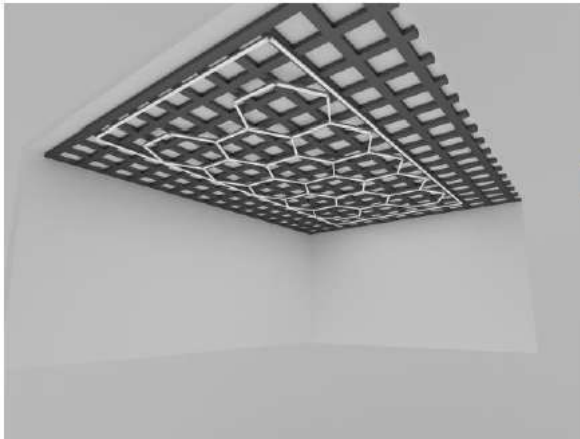
BLUE = N

YELLOW = E

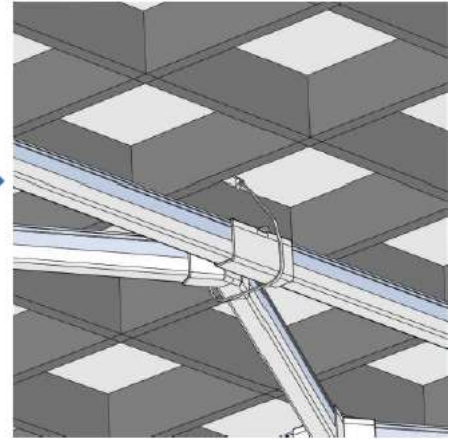
Depending on your circuit breaker you may experience the power being cut. This is due to the inrush of current to the LED's. A different circuit breaker might be required to deal with the initial surge of current. Please refer to a professional electrician.

## How to install to ceiling:

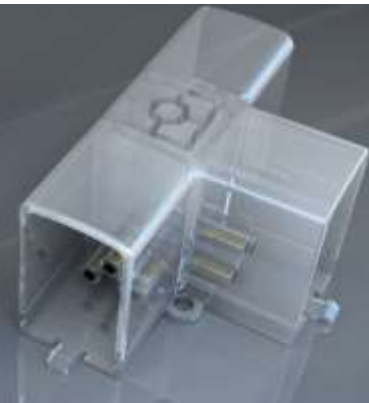
### Grid roof:



Tie it with ribbons



### Flat Roof:



Use hole on connectors to screw into flat ceiling/wall to secure.

## Technical Data:

**Power:** AC230V/192w

**Current:**5A

**Width:**20mm

**Luminous Flux** 110-120lm/w

**CRI:** >90

**CCT:** 6500K (White)

**Material:** Aluminium & PVC Diffuser