



A Mindful Approach to Stress

2026 Primary Care Hawaii Conference

Gyll Turteltaub, PsyD

Disclosures

Gyll Turteltaub, PsyD

Has no financial relationships to disclose.

Views expressed are my own and do not represent Kaiser Permanente or any affiliated organization.

Today We'll Explore

- What chronic stress is doing to your brain and body
-

- How stress influences thinking, emotions, and behavior
-

- A few practical ways to interrupt the cycle
-

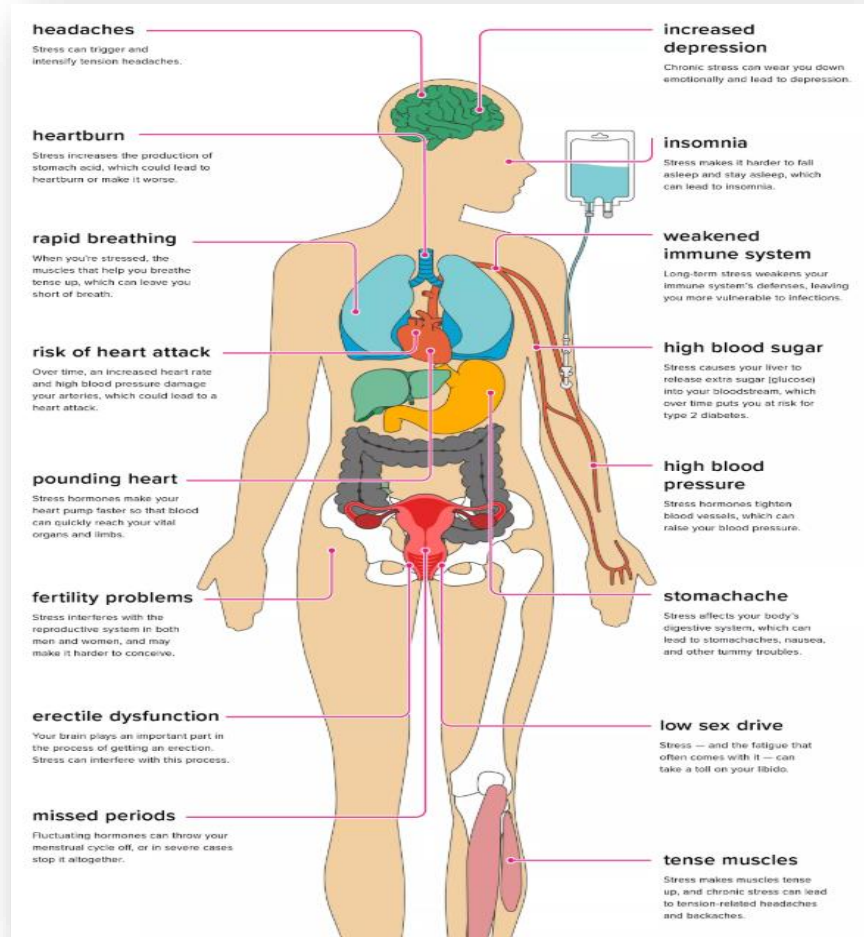
MIND / BODY CONNECTION

Stress is not a psychological inconvenience.

It is a full-system physiological event.

Ask yourself: how many patients last week had physical symptoms primarily driven or worsened by stress?

Psychosocial distress shapes symptom burden, recovery time, and immune response. This is physiology.



What is Stress?

“...your body’s response to any perceived demand from outside or from within.”

Sometimes real. Sometimes anticipated. Sometimes self-created.

Take a moment:

What’s one stressor you carried into this room today?

ACUTE STRESS RESPONSE

Stress Was Designed to Protect Us

- Heart rate, BP & cortisol surge
 - Blood flows to muscles — away from digestion
 - Focus narrows to the immediate threat
 - Life-saving — in short bursts
-

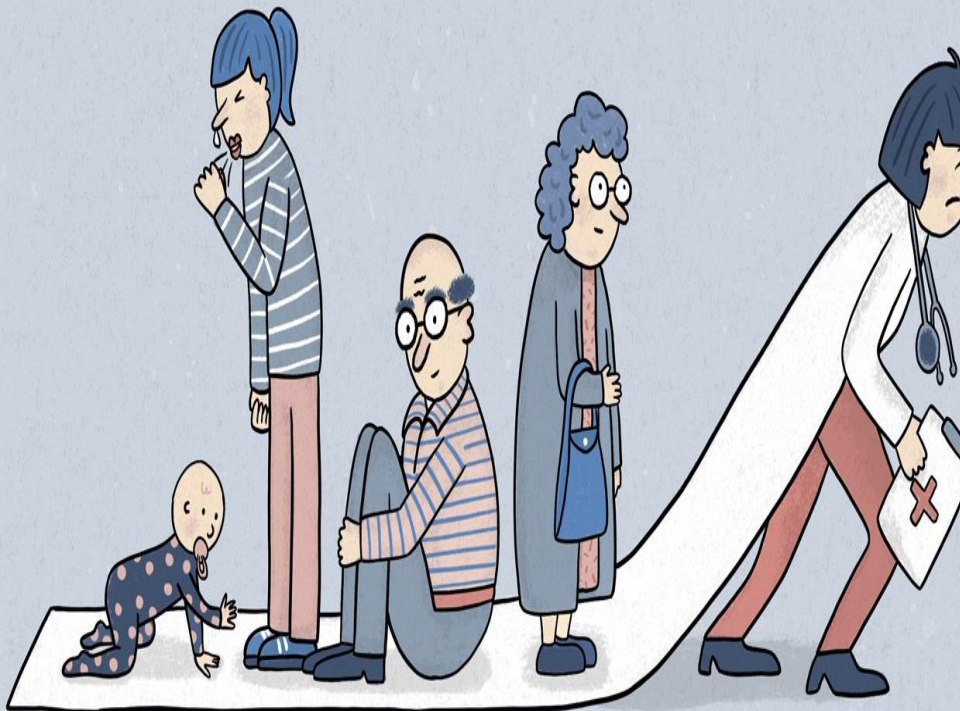


THE PROBLEM ISN'T STRESS — IT'S CHRONIC ACTIVATION

Unlike escaping a predator, our modern stressors never fully resolve.

-
- **Immune function** decreases
 - **Sleep & emotional regulation** suffer
 - **Digestion & recovery** slow
 - **The body remains** on high alert — indefinitely

Many high-performing physicians adapt externally while becoming increasingly depleted internally.



How Does Stress Show Up For You?

Physical	Behavioral	Emotional	Spiritual
<ul style="list-style-type: none">• Fatigue• Sleep disruption• Muscle tension• Appetite changes	<ul style="list-style-type: none">• Difficulty concentrating• Forgetfulness• Catastrophizing• Racing thoughts	<ul style="list-style-type: none">• Irritability• Feeling overwhelmed• Anxiety• Numbness	<ul style="list-style-type: none">• Feeling disconnected• Loss of meaning• Lack of balance• Unfulfilled

The Stress Cycle

Under stress, thinking narrows, hardens, and loses flexibility.



Example:

“I’ll never catch up” → Anxiety & frustration → Withdrawal, poor sleep → More overwhelm

You can interrupt this cycle at any point – any entry will do.

Cognitive Distortions: Stress-Driven Thinking Traps

● All-or-Nothing Thinking

"If it's not perfect, it's a failure."

● Over-Generalization

One setback = a never-ending pattern of defeat

● Mind Reading

"They're reacting negatively to me"

● Emotional Reasoning

"I feel overwhelmed — therefore I am failing."

12 UNHELPFUL NEGATIVE THOUGHTS



'I can't do anything right'



'I am such a failure'



'I am so incredibly worthless'



'Everyone is better than me'



'Life is so pointless'



'Nobody ever likes me'



'This always happens to me'



'I will never be enough'



'I am a waste of space'



'I am a stupid person'



'I am really nothing'



'Trying will not help at all'

Which one is your personal favorite under stress?

What we do with automatic thoughts

- 1 Notice**
automatic thoughts without judgment

- 2 Pause**
before reacting — create a gap between stimulus and response

- 3 Challenge**
harsh self-talk: Is this true? Is this helpful?

- 4 Refocus**
attention on what is accurate and useful



The goal is not to eliminate negative thoughts. It's to reduce their authority.

Where We Place Our Energy Matters

One of the most powerful shifts under stress is becoming intentional about where we direct our attention.

Within Your Control

Your attitude & mindset · Effort & focus · How you respond · Boundaries & self-care

Within Your Influence

Relationships · Team culture · How you communicate with colleagues and patients

Outside Your Control

Other people's behavior · Organizational decisions · The past

Energy directed toward what we cannot control is energy we won't get back.



BREATHE

The fastest reset available

Deep abdominal breathing activates the parasympathetic nervous system and interrupts the fight-or-flight response.

Even 60 seconds helps.

Try it now: breathe in for 4 counts · hold for 4 · out for 6

Three Lenses for Reframing

● *Reverse Lens*

What would the other person say? How might they be right?

● *Long Lens*

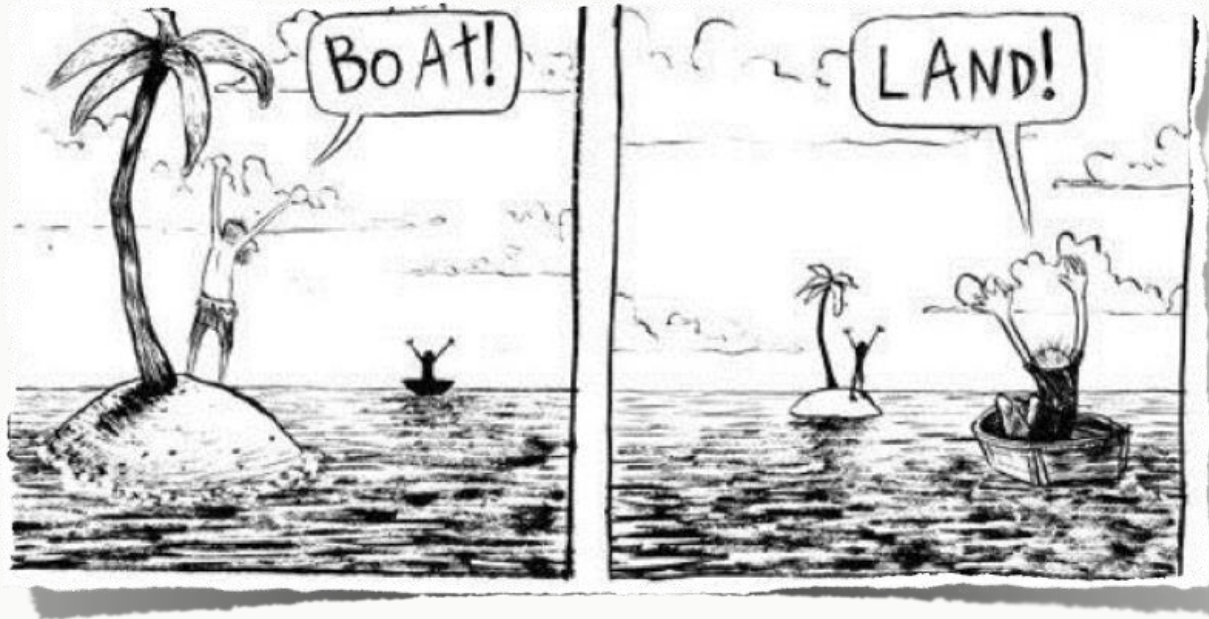
How will I view this situation in six months?

● *Wide Lens*

What can I learn or grow from in this?

Under stress, we default to the narrowest lens

How Does Your Perspective Influence Your Emotions?



Same ocean. Same island. One sees "stranded." One sees "saved."

RENEWING PHYSICAL ENERGY

Our nervous systems were designed to complete the stress cycle — not to live in it.

- **Notice early depletion signals:** restlessness, yawning, difficulty concentrating
- **Protect sleep** — it's the foundation of cognitive performance
- **Move your body:** cardio and strength training are evidence-based stress reducers
- **Fuel well** — blood sugar dysregulation amplifies stress reactivity
- **Take brief recovery breaks** at specific intervals — not when you crash



Protecting What Sustains You

● Mental Energy

- Guard against interruptions
- Reduce multitasking
- Limit constant stimulation
- Prioritize ruthlessly

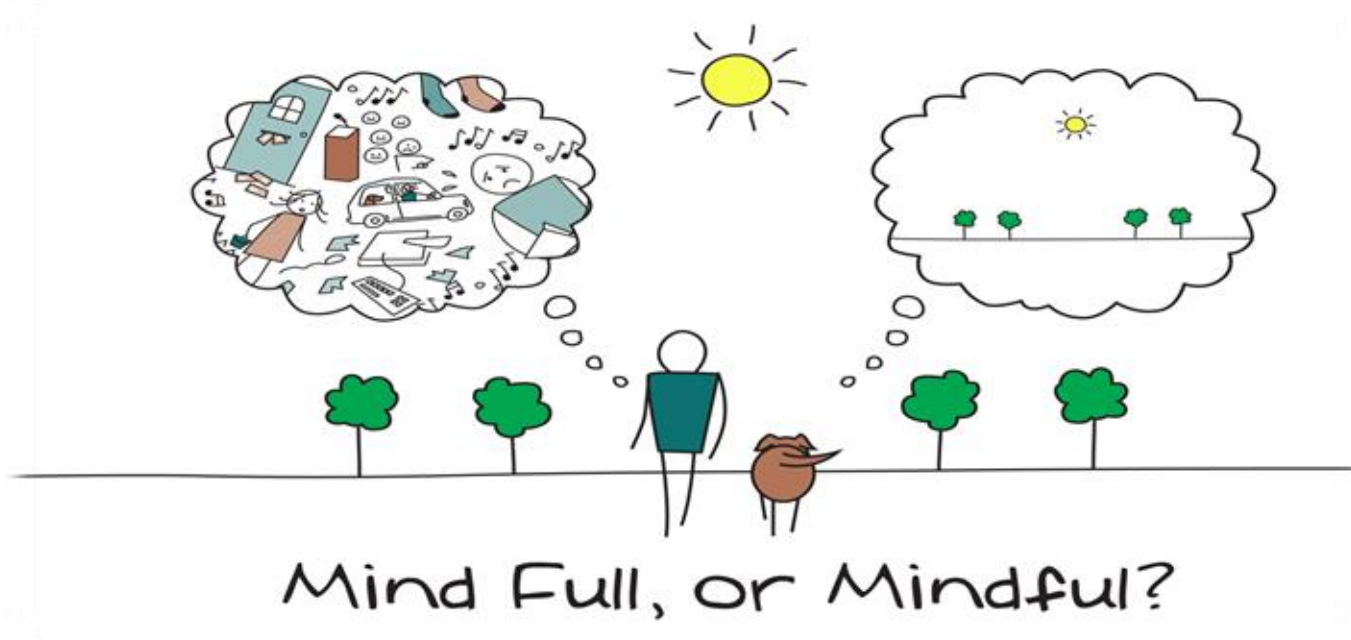
● Human Spirit

- Reconnect with meaning
- Clarify your values
- Nurture connection
- Build in reflection



MINDFULNESS is not meditation.

It is paying attention, on purpose, without judgment.



NEUROPLASTICITY

What we practice grows stronger

Consistent mindfulness practice:

20 min / day · 8 weeks · measurable brain changes



Amygdala

smaller = less threat reactivity, less emotional flooding



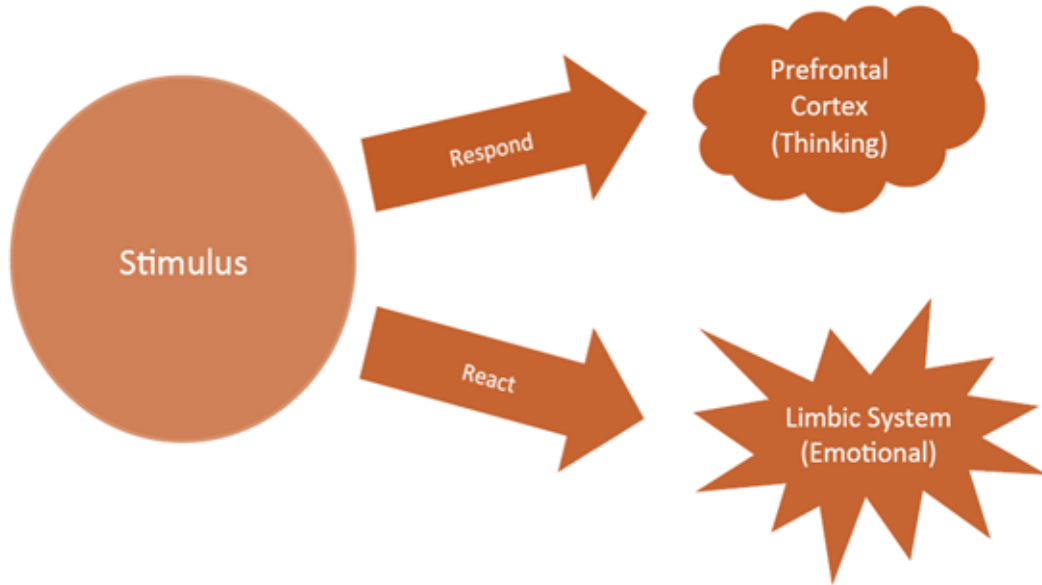
Prefrontal Cortex

larger = better focus, judgment & regulation



Mental Regulation: Respond vs. React

Every moment contains a choice.



RESPOND

Prefrontal cortex · Thoughtful
Intentional · Values-driven

REACT

Limbic system · Fast · Automatic
Stress-driven · Emotion-led

The pause

Even 3 breaths shifts your brain
from reactive to responsive mode.

***“Between stimulus and response
there is a space.***

***In that space is our power to
choose our response.***

***In our response lies our growth
and our freedom.”***

— Viktor Frankl



Just Breathe

A Practice for Right Now



Your Mindful Stress Toolkit

1 Name It

Notice and name what you're feeling. Labeling reduces limbic activation.

2 Breathe

3–5 deep breaths activate the parasympathetic system in under 60 seconds.

3 Reframe

Use the Reverse, Long, or Wide Lens to shift perspective.

4 Move

Even 10 minutes reduces cortisol and clears cognitive load.

5 Focus

Direct energy toward what you can actually influence.

6 Practice

One moment of intentional attention, once a day.

Questions & Reflection

